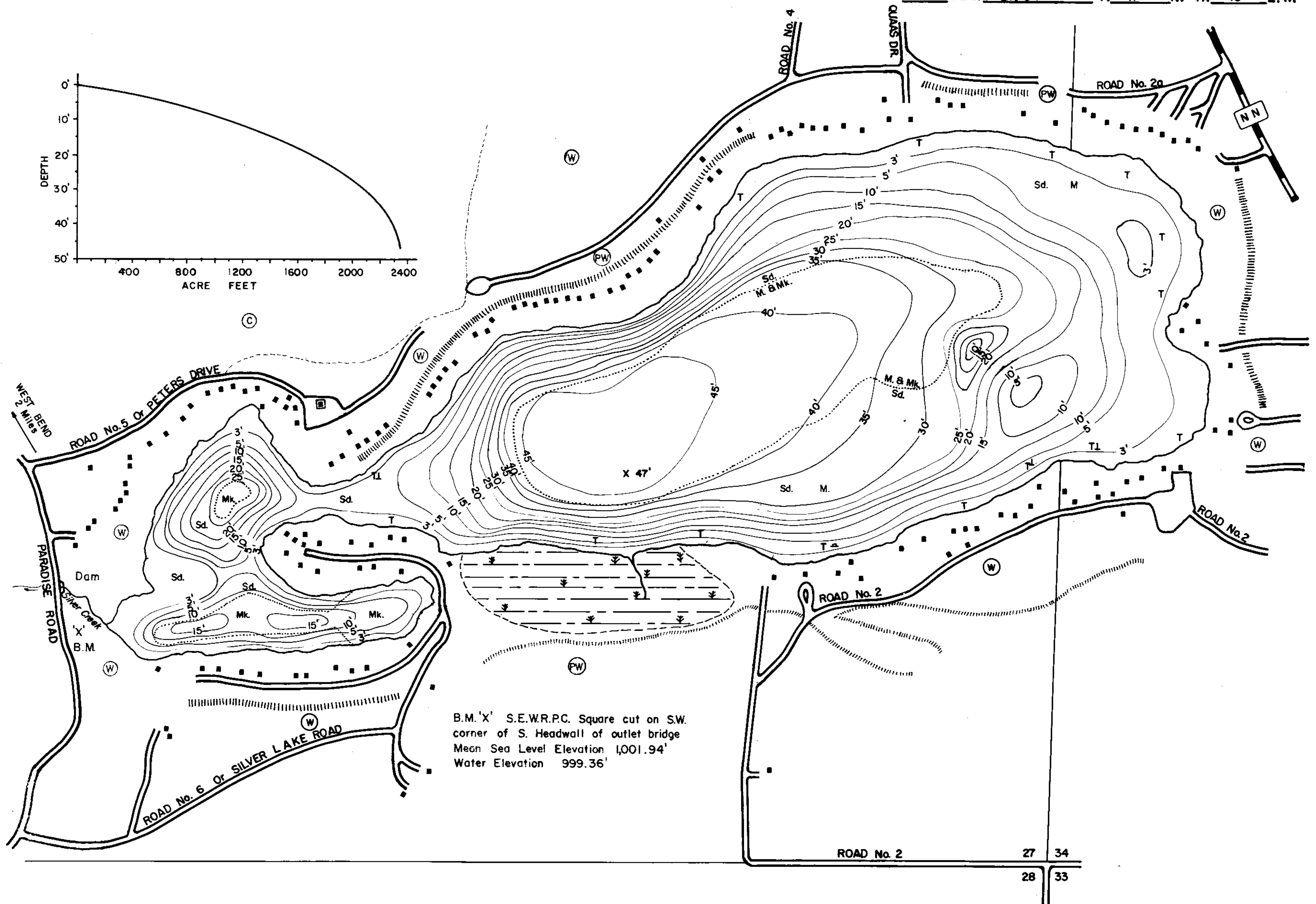
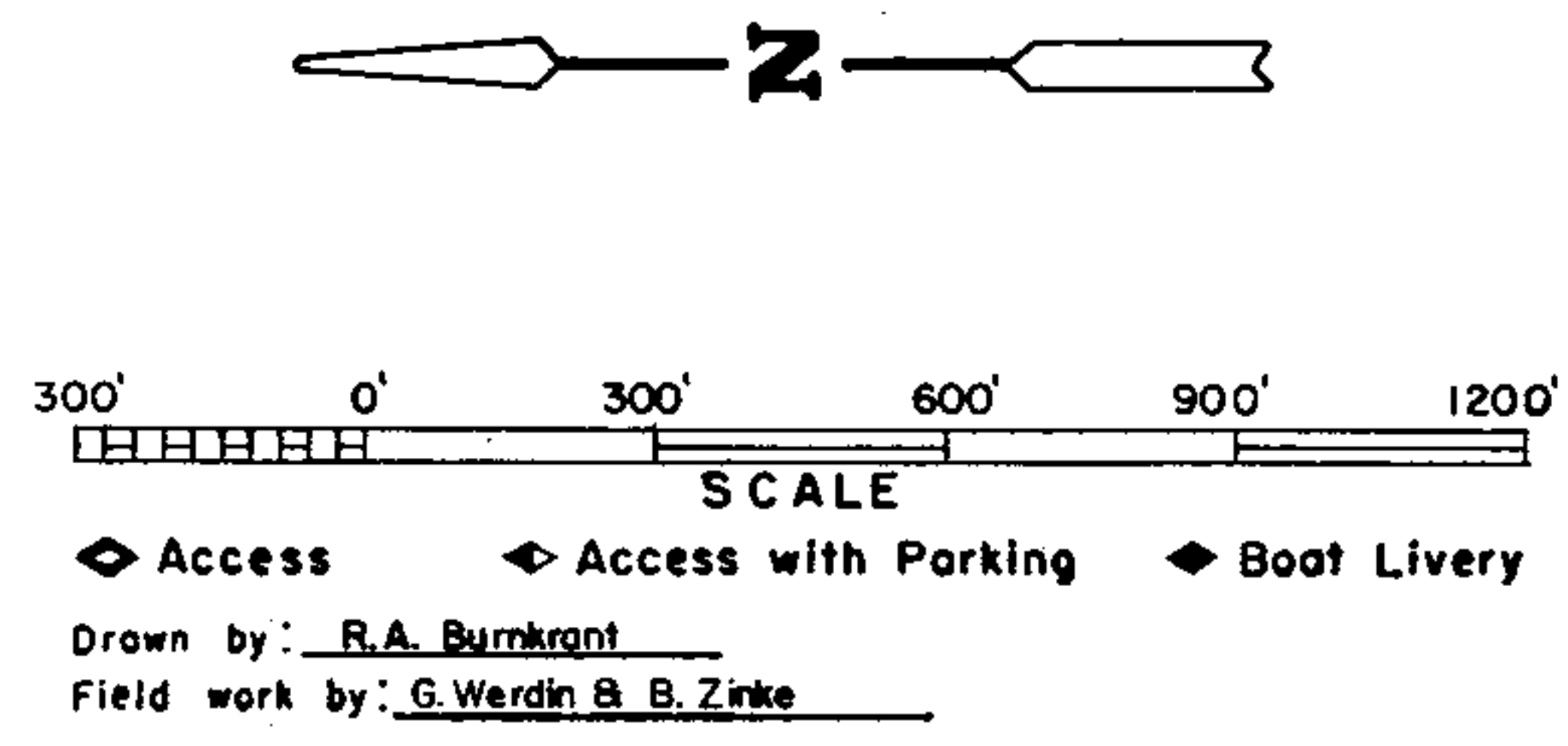


LAKE SURVEY MAP



B.M. 'X' S.E.W.R.P.C. Square cut on S.W. corner of S. Headwall of outlet bridge
Mean Sea Level Elevation 1,001.94'
Water Elevation 999.36'

- | | | | | |
|----------------------------|-------------------------------|---------------|-----------------------------|----------------------------|
| EQUIPMENT RECORDING | SONAR | MAPPED | JUNE | 1969 |
| TOPOGRAPHIC SYMBOLS | | MONTH | YEAR | LAKE BOTTOM SYMBOLS |
| (B) Brush | Steep slope | P. Peat | B Boulders | Mk. Muck |
| (W) Partially wooded | ----- Indefinite shoreline | C. Clay | ⊕ Stumps & Snags | T. Submergent vegetation |
| (W) Wooded | ----- Marsh | M. Marl | ⚡ Rock danger to navigation | ⊥ Emergent vegetation |
| (C) Cleared | ----- Spring | Sd. Sand | ⊥ Floating vegetation | ⊕ Brush shelters |
| (P) Pastured | ----- Intermittent stream | Sl. Silt | | |
| (A) Agricultural | ----- Permanent inlet | Gr. Gravel | | |
| B.M. Bench Mark | ----- Permanent outlet | R. Rubble | | |
| ■ Dwelling | ----- Dam | Bc. Bedrock | | |
| ■ Resort | ----- D.N.R. State owned land | | | |
| ■ Camp | | | | |



SPECIES OF FISH	Abundance		
	Abundant	Common	Present
Muskie			X
N. Pike			X
Walleye		X	
L.M. Bass		X	
S.M. Bass		X	
Panfish	X		
Trout			

WATER AREA 117.6 ACRES
 UNDER 3 FT. 12 %
 OVER 20 FT. 56 %
 MAX. DEPTH 47 FEET.
 TOTAL ALK. 209 P.P.M.
 VOLUME 2305.9 ACRE FT.
 SHORELINE 2.74 MILES

Source: Wisconsin Department of Natural Resources 608-266-2621
Silver Lake – Washington County, Wisconsin DNR Lake Map
Date – Jun 1969 - Historical Lake Map - Not for Navigation
A Public Document - Please Identify the Source when using it.