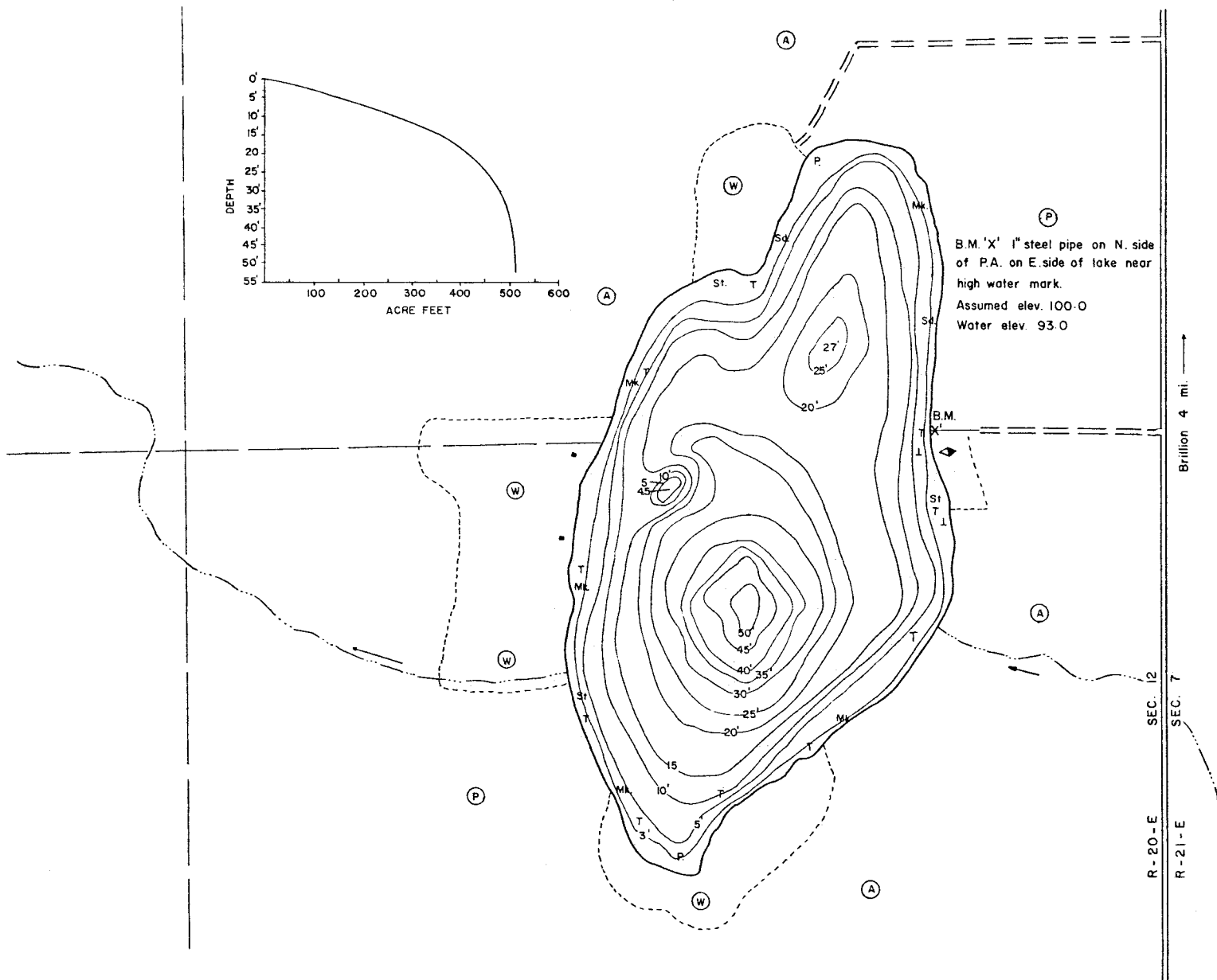
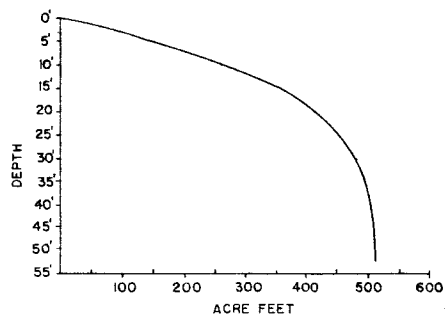
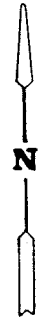


LAKE SURVEY MAP



B.M. 'X' 1" steel pipe on N. side of P.A. on E. side of lake near high water mark.
Assumed elev. 100.0
Water elev. 93.0

Brillion 4 mi. →

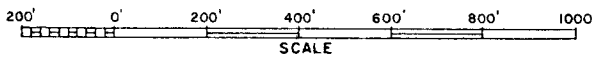


SPECIES OF FISH	Abundance	
	Abundant	Present
Muskie		
N Pike		X
Walleye		
L M Bass		X
S M Bass		
Panfish	X	
Trout		

EQUIPMENT RECORDING SONAR MAPPED JUNE 1966
MO. YR.

- TOPOGRAPHIC SYMBOLS
- (B) Brush
 - (W) Partially wooded
 - (C) Cleared
 - (P) Pastured
 - (A) Agricultural
 - B.M. Bench Mark
 - Dwelling
 - Resort
- LAKE BOTTOM SYMBOLS
- P. Peat
 - Gr. Gravel
 - R. Rubble
 - Br. Bedrock
 - T Submergent vegetation
 - I Emergent vegetation
 - △ Floating vegetation
 - Mk. Muck
 - C. Clay
 - M. Marl
 - Sd. Sand
 - St. Silt
- Other symbols: Steep slope, Indefinite shoreline, Marsh, Spring, Intermittent stream, Permanent inlet, Permanent outlet, Dam

WATER ELEV. 93.00'



◇ Access ◀ Access with Parking ◆ Boat Livery
Field work by H. Schumde, T. Corbett Drawn by: C. Holt

AREA 31.96 ACRES
UNDER 3 FT. 11.32 %
OVER 20 FT. 29.00 %
VOLUME 510.7 ACRE FT.
TOTAL ALK. 62 P.P.M.
SHORELINE .95 MILES
MAX. DEPTH 52.5 FEET

Source: Wisconsin Department of Natural Resources 608-266-2621
Becker Lake – Calumet County, Wisconsin DNR Lake Map
Date –Jun 1966 - Historical Lake Map - Not for Navigation
A Public Document - Please Identify the Source when using it.