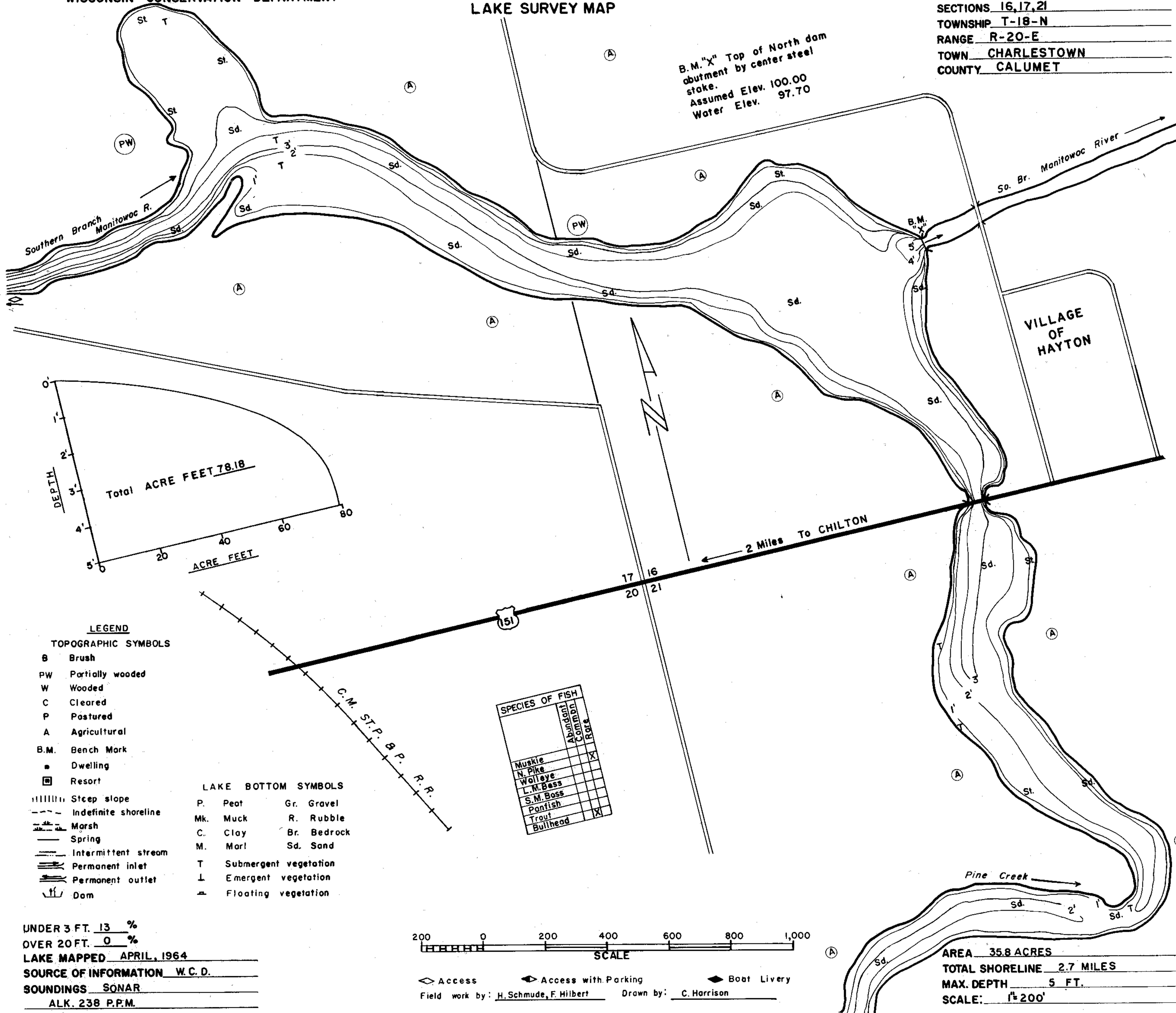
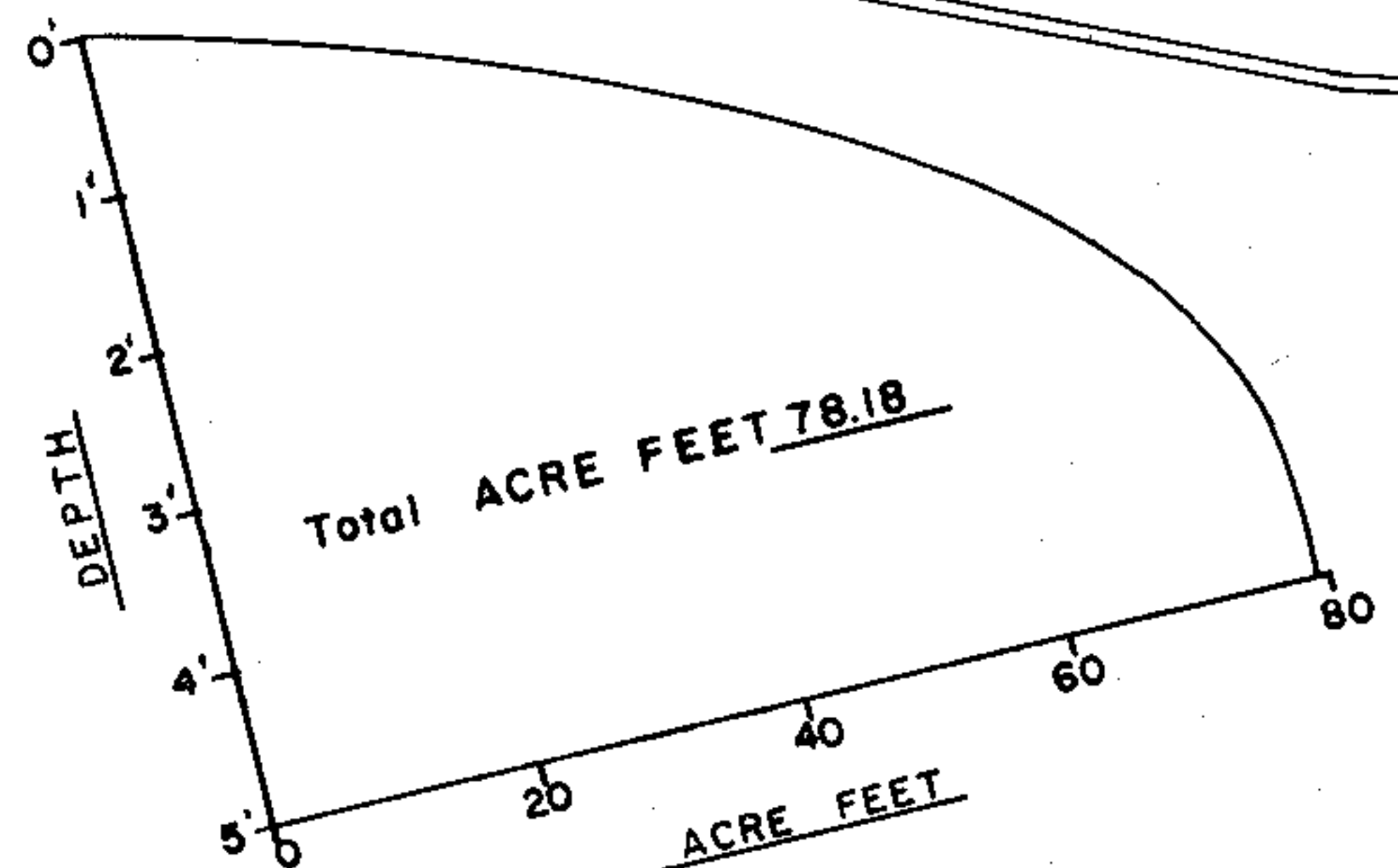


LAKE HAYTON POND
 SECTIONS 16, 17, 21
 TOWNSHIP T-18-N
 RANGE R-20-E
 TOWN CHARLESTOWN
 COUNTY CALUMET



B.M. "X" Top of North dam
 abutment by center steel
 stake.
 Assumed Elev. 100.00
 Water Elev. 97.70

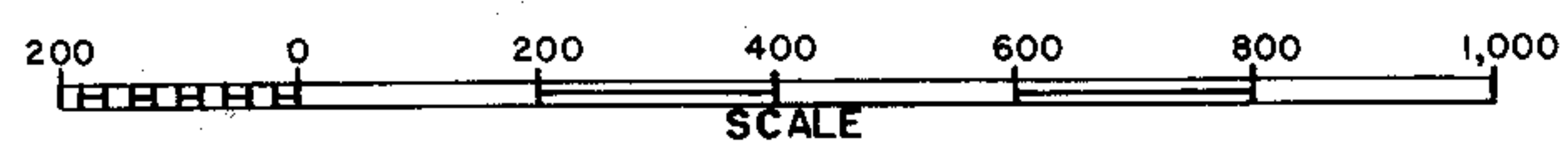


- LEGEND**
- TOPOGRAPHIC SYMBOLS**
- B Brush
 - PW Partially wooded
 - W Wooded
 - C Cleared
 - P Pastured
 - A Agricultural
 - B.M. Bench Mark
 - Dwelling
 - ▣ Resort
- LAKE BOTTOM SYMBOLS**
- ||||| Steep slope
 - - - Indefinite shoreline
 - ▨ Marsh
 - Spring
 - Intermittent stream
 - Permanent inlet
 - Permanent outlet
 - ▭ Dam
 - P. Peat
 - Mk. Muck
 - C. Clay
 - M. Marl
 - Gr. Gravel
 - R. Rubble
 - Br. Bedrock
 - Sd. Sand
 - T Submergent vegetation
 - ⊥ Emergent vegetation
 - Floating vegetation

SPECIES OF FISH

	Abundant	Common	Rare
Muskie			X
N. Pike			
Walleye			
L.M. Bass			
S.M. Bass			
Panfish			
Trout			
Bullhead			X

UNDER 3 FT. 13 %
 OVER 20 FT. 0 %
 LAKE MAPPED APRIL, 1964
 SOURCE OF INFORMATION W.C.D.
 SOUNDINGS SONAR
 ALK. 238 P.P.M.



◇ Access ◇ Access with Parking ◇ Boat Livery
 Field work by: H. Schude, F. Hilbert Drawn by: C. Harrison

AREA 35.8 ACRES
 TOTAL SHORELINE 2.7 MILES
 MAX. DEPTH 5 FT.
 SCALE: 1" = 200'

Source: Wisconsin Department of Natural Resources 608-266-2621
Hayton Pond – Calumet County, Wisconsin DNR Lake Map
Date – Apr 1964 - Historical Lake Map - Not for Navigation
A Public Document - Please Identify the Source when using it.