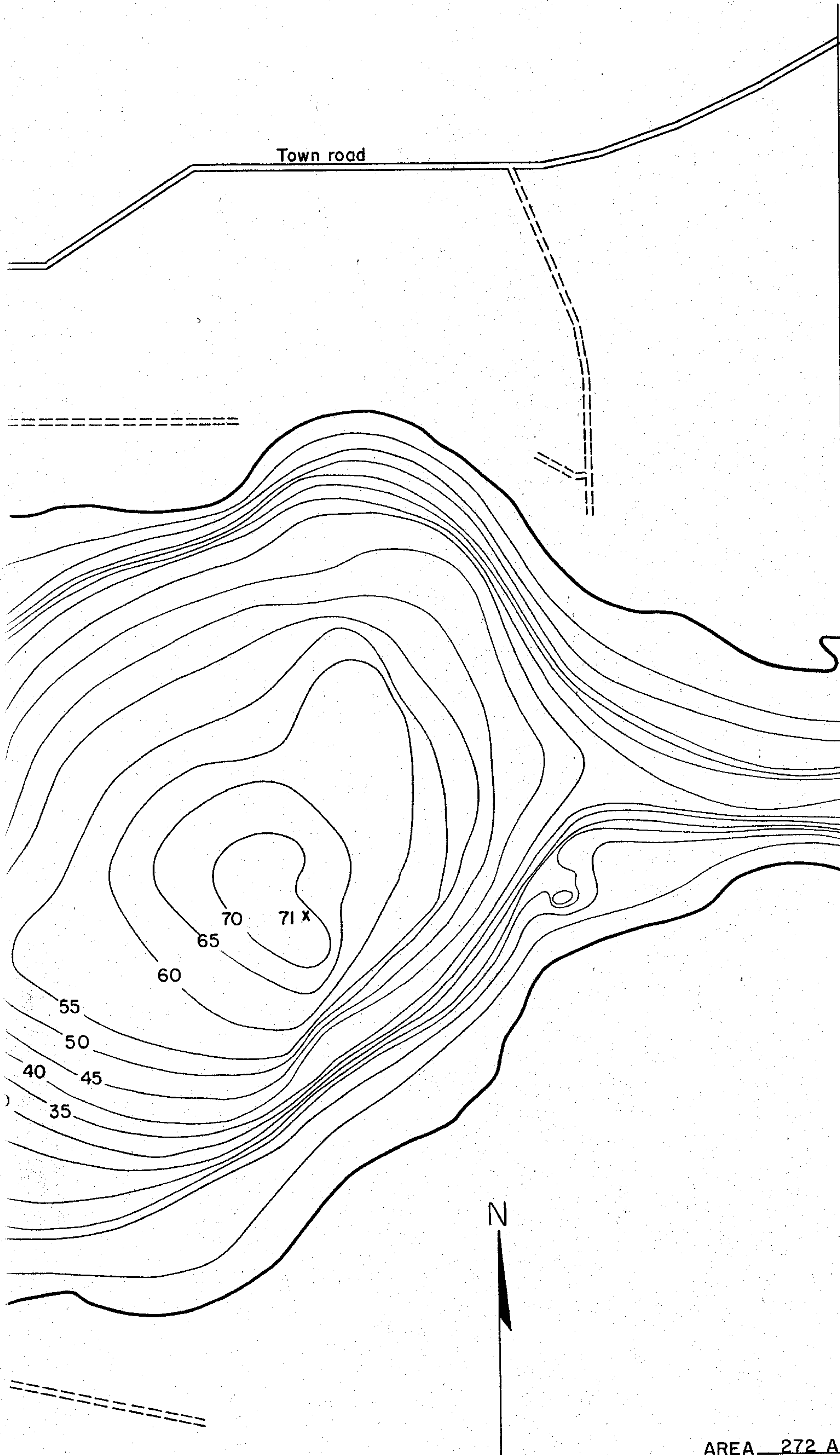


DEPARTMENT

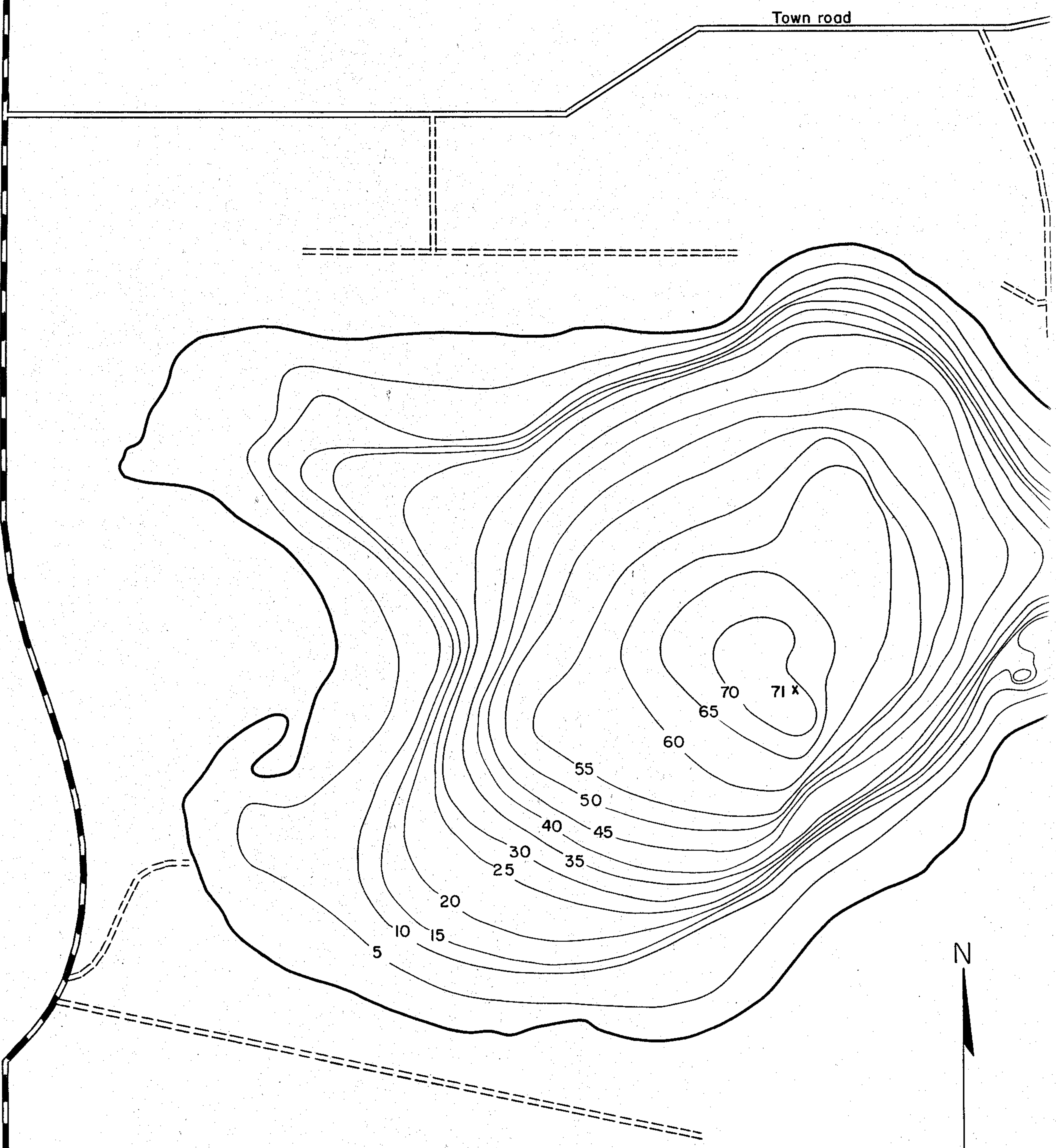
# LAKE SURVEY MAP

LAKE LONG (1 of 2 sheets)  
SECTION 7-8-12-13-18  
TOWNSHIP T. 20. N  
RANGE R. 11 & 12. E  
TOWN SPRINGWATER & SAXEVILLE  
COUNTY WAUSHARA



AREA 272 Acres  
TOTAL SHORELINE 4.43 Miles  
MAX. DEPTH 71 Feet  
SCALE: No Scale

C.T.H. "W"



Date of mapping 8/17/55  
Water down 4' from high water mark.

DEPARTMENT

LAKE SURVEY MAP

LAKE LONG (2 of 2 sheets)

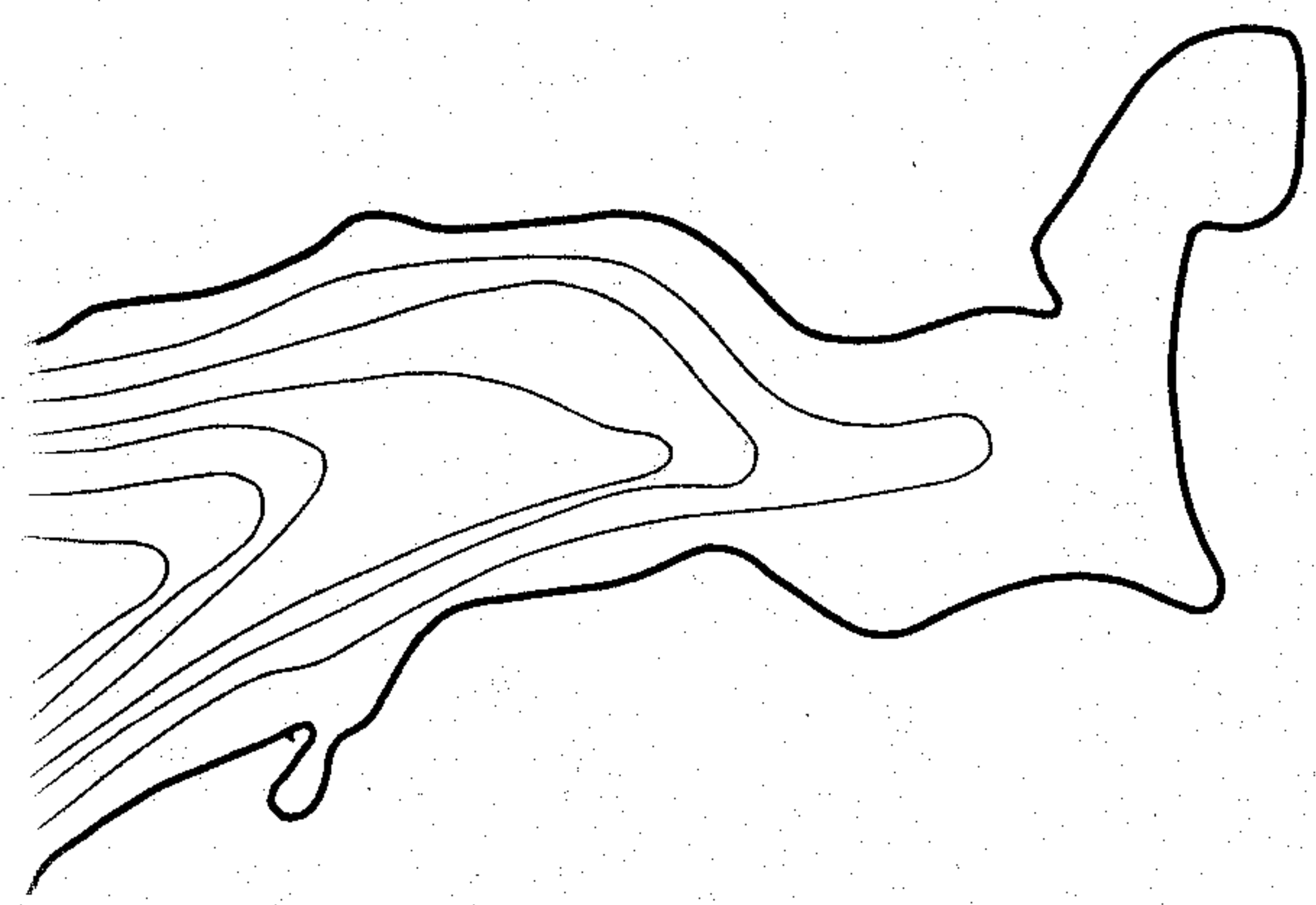
SECTION 7-8-12-13-18

TOWNSHIP T. 20. N

RANGE R. 11 & 12. E

TOWN SPRINGWATER & SAXEVILLE

COUNTY WAUSHARA



Town road

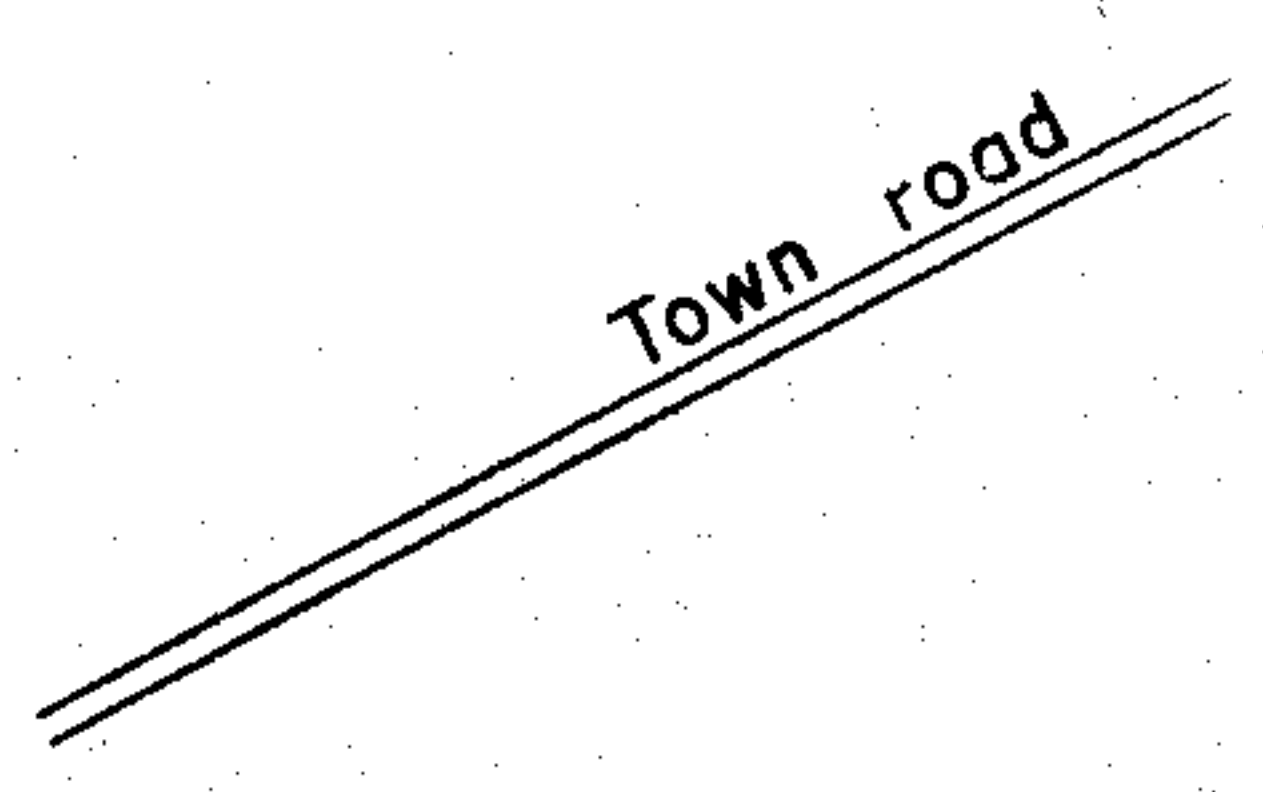
AREA 272 Acres

TOTAL SHORELINE 4.43 Miles

MAX. DEPTH 71 Feet

SCALE: No Scale





Source: Wisconsin Department of Natural Resources 608-266-2621  
Long Lake – Waushara County, Wisconsin DNR Lake Map  
Date – Aug 1955 - Historical Lake Map - Not for Navigation  
A Public Document - Please Identify the Source when using it.