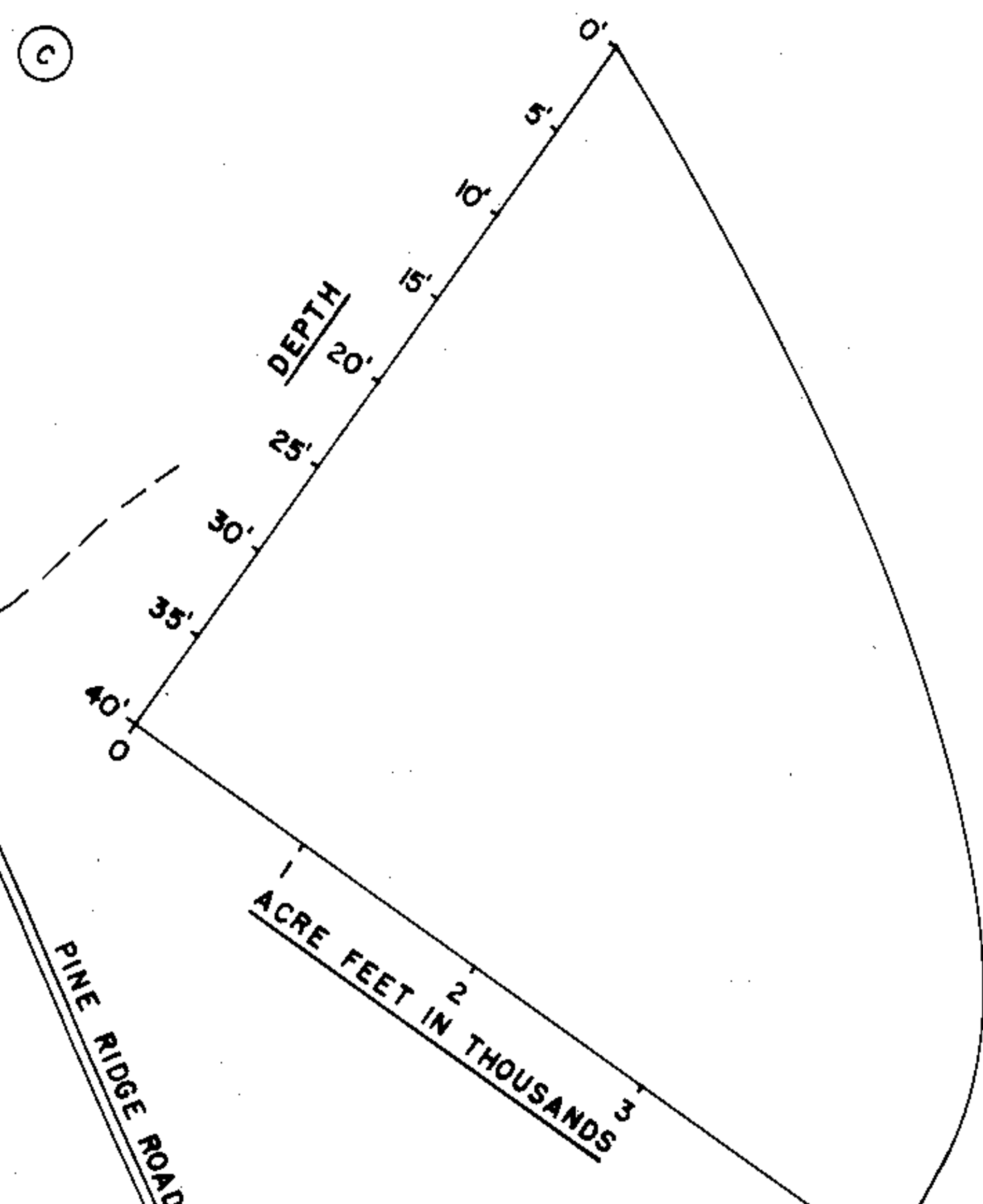
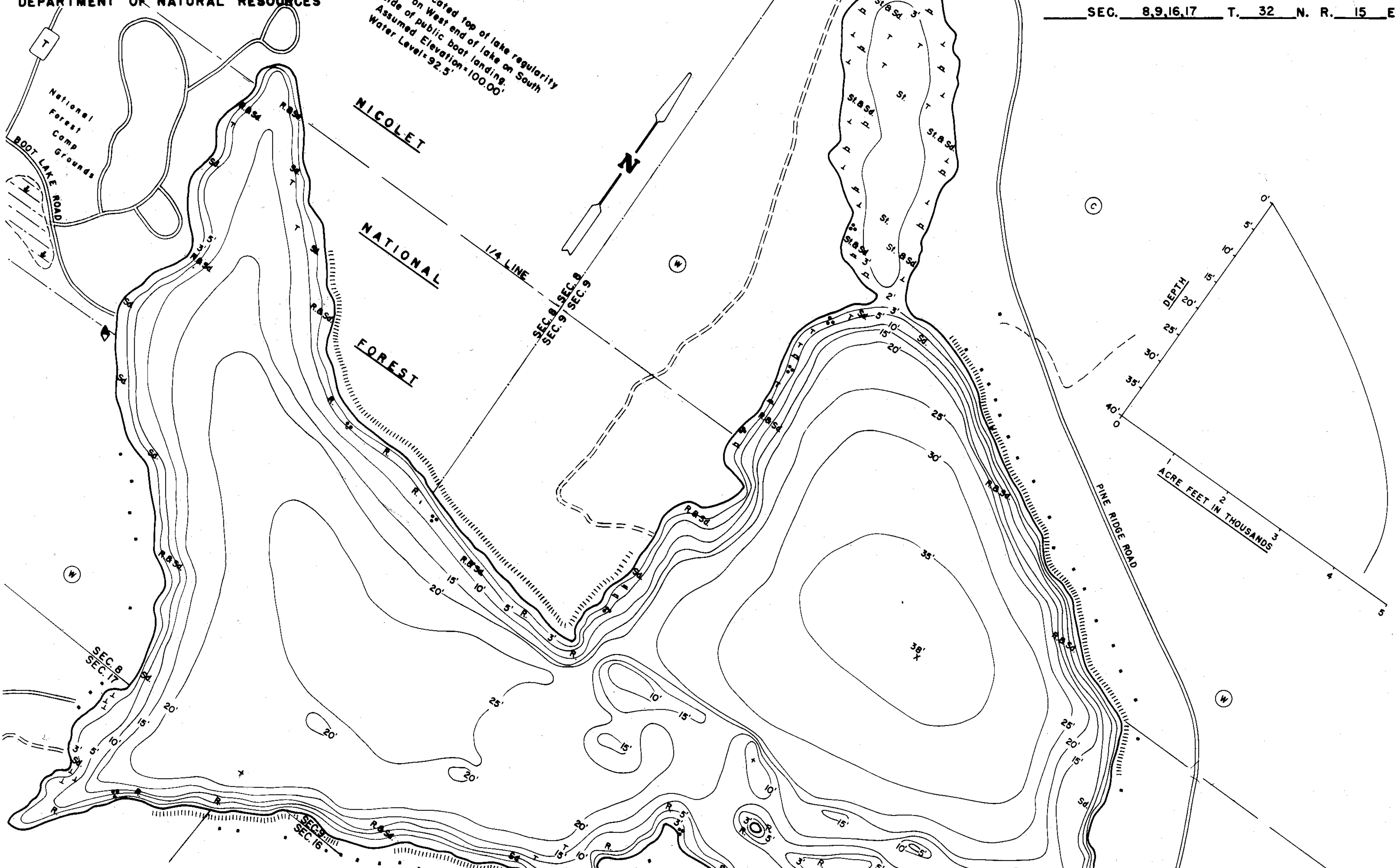
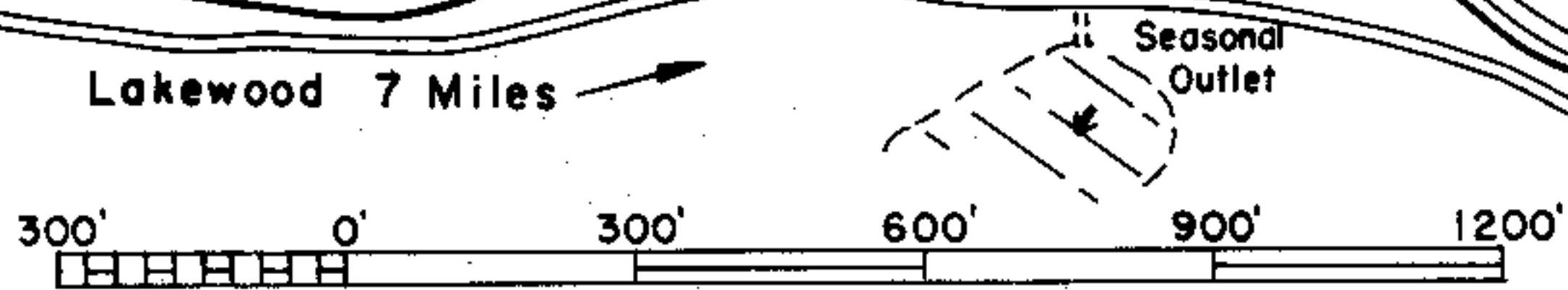


B.M. Located top of lake regularly  
sign on West end of lake on South  
side of public boat landing.  
Assumed Elevation = 100.00'  
Water Level = 92.5'



EQUIPMENT RECORDING SONAR MAPPED JULY 1975

- | TOPOGRAPHIC SYMBOLS   |                           | LAKE BOTTOM SYMBOLS |                             |
|-----------------------|---------------------------|---------------------|-----------------------------|
| (B) Brush             | Steep slope               | P. Peat             | B Boulders                  |
| (PW) Partially wooded | ~ Indefinite shoreline    | Mk. Muck            | ☼ Stumps & Snags            |
| (W) Wooded            | ☼ Marsh                   | C. Clay             | ☼ Rock danger to navigation |
| (C) Cleared           | ☼ Spring                  | M. Marl             | T Submergent vegetation     |
| (P) Pastured          | ~ Intermittent stream     | Sd. Sand            | ⊥ Emergent vegetation       |
| (A) Agricultural      | ~ Permanent inlet         | St. Silt            | ☼ Floating vegetation       |
| B.M. Bench Mark       | ~ Permanent outlet        | Gr. Gravel          | ☼ Brush shelters            |
| ■ Dwelling            | ~ Dam                     | R. Rubble           |                             |
| □ Resort              | ~ D.N.R. State owned land | Br. Bedrock         |                             |
| □ Camp                |                           |                     |                             |



Access Access with Parking Boat Livery  
 Drawn by: G.Thuesen  
 Field work by: D.Boese, R.Thrun

SPECIES OF FISH	Abundant Common Present		
	Abundant	Common	Present
Muskie		X	
N.Pike		X	X
Walleye		X	
L.M.Bass		X	
S.M.Bass		X	
Panfish		X	
Trout			

WATER AREA 235.07 ACRES  
 UNDER 3 FT. 9.14 %  
 OVER 20 FT. 52.25 %  
 MAX. DEPTH 38 FEET.  
 TOTAL ALK. 51.3 P.P.M.  
 VOLUME 4403.46 ACRE FT.  
 MAIN SHORELINE 3.76 MI.  
 ISLAND SHORELINE 0 MI.