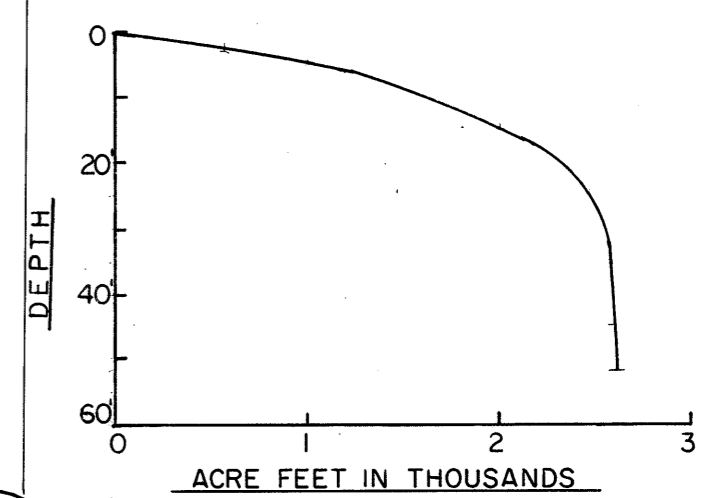
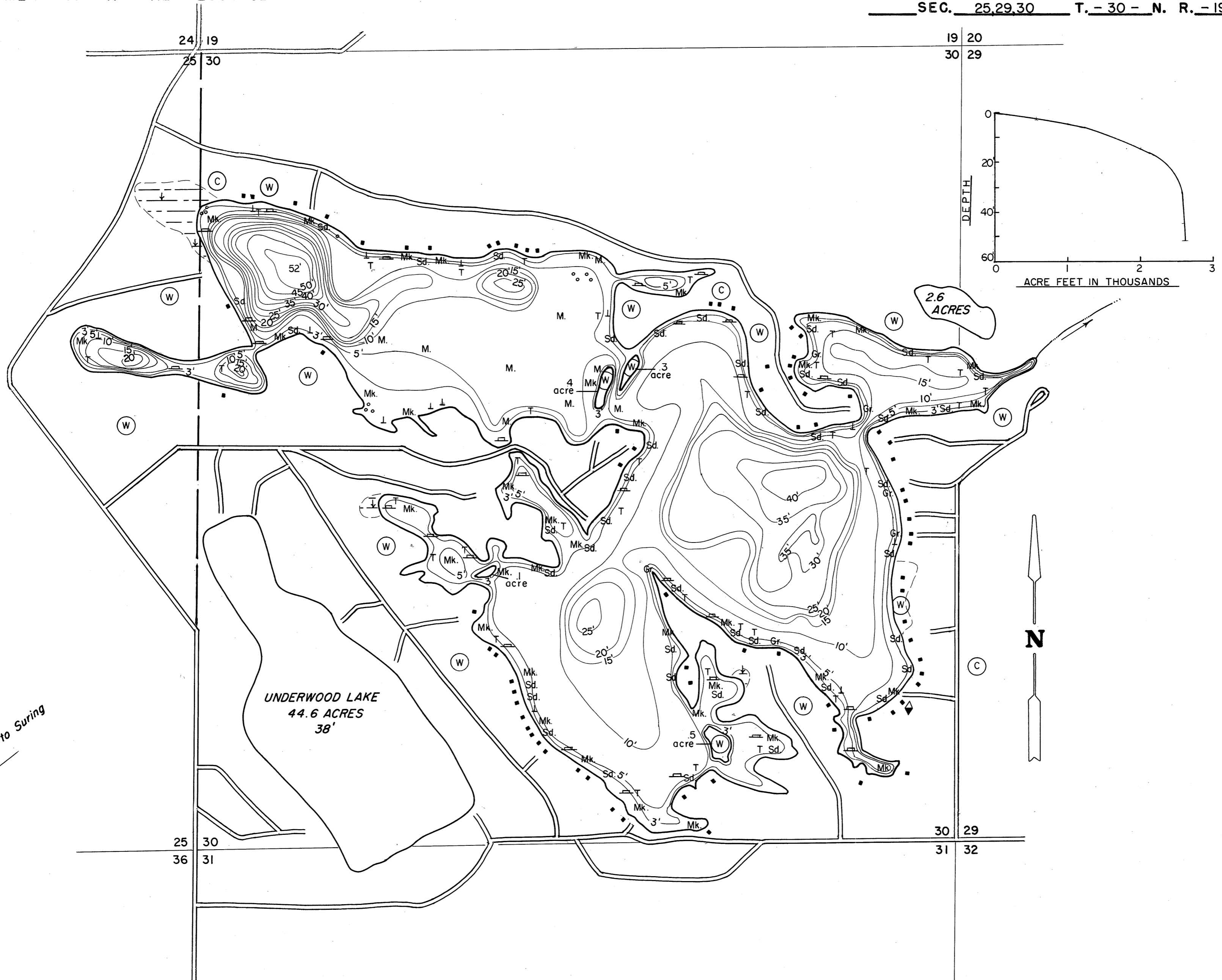


LAKE SURVEY MAP

24 19
25 30

19 20
30 29

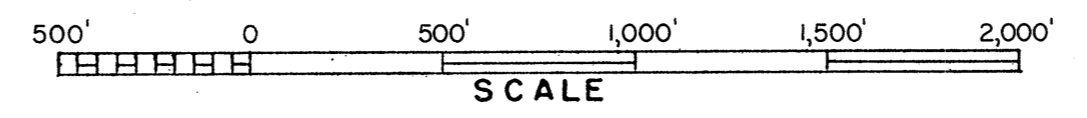


10 Miles to Suring

EQUIPMENT RECORDING SONAR MAPPED JULY 1969

- TOPOGRAPHIC SYMBOLS**
- (B) Brush
 - (PW) Partially wooded
 - (W) Wooded
 - (C) Cleared
 - (P) Pastured
 - (A) Agricultural
 - B.M. Bench Mark
 - Dwelling
 - Resort
 - ⊠ Camp
 - ||||| Steep slope
 - - - Indefinite shoreline
 - Marsh
 - Spring
 - Intermittent stream
 - Permanent inlet
 - Permanent outlet
 - Dam
 - D.N.R. State owned land

- LAKE BOTTOM SYMBOLS**
- P. Peat
 - Mk. Muck
 - C. Clay
 - M. Marl
 - Sd. Sand
 - St. Silt
 - Gr. Gravel
 - R. Rubble
 - Br. Bedrock
 - B Boulders
 - Stumps & Snags
 - Rock danger to navigation
 - T Submergent vegetation
 - Emergent vegetation
 - Floating vegetation
 - Brush shelters



- ◆ Access
- ◀ Access with Parking
- ◆ Boat Livery

Drawn by: J. Roth
Field work by: J. Smith, P. Michelson

SPECIES OF FISH	Abundance		
	Abundant	Common	Present
Muskie			
N. Pike		X	
Walleye			X
L.M. Bass		X	
S.M. Bass			
Panfish	X		
Trout			

WATER AREA 231.4 ACRES
 UNDER 3 FT. 13 %
 OVER 20 FT. 18 %
 MAX. DEPTH 52 FEET.
 TOTAL ALK. 130 P.P.M.
 VOLUME 2,719.6 ACRE FT.
 SHORELINE 7.7 MILES
 7.0 MILES OF SHORELINE EXCLUDING ISLANDS

Source: Wisconsin Department of Natural Resources 608-266-2621
Leigh Lake – Oconto County, Wisconsin DNR Lake Map
Date - Jul 1969 - Historical Lake Map - Not for Navigation
A Public Document - Please Identify the Source when using it.