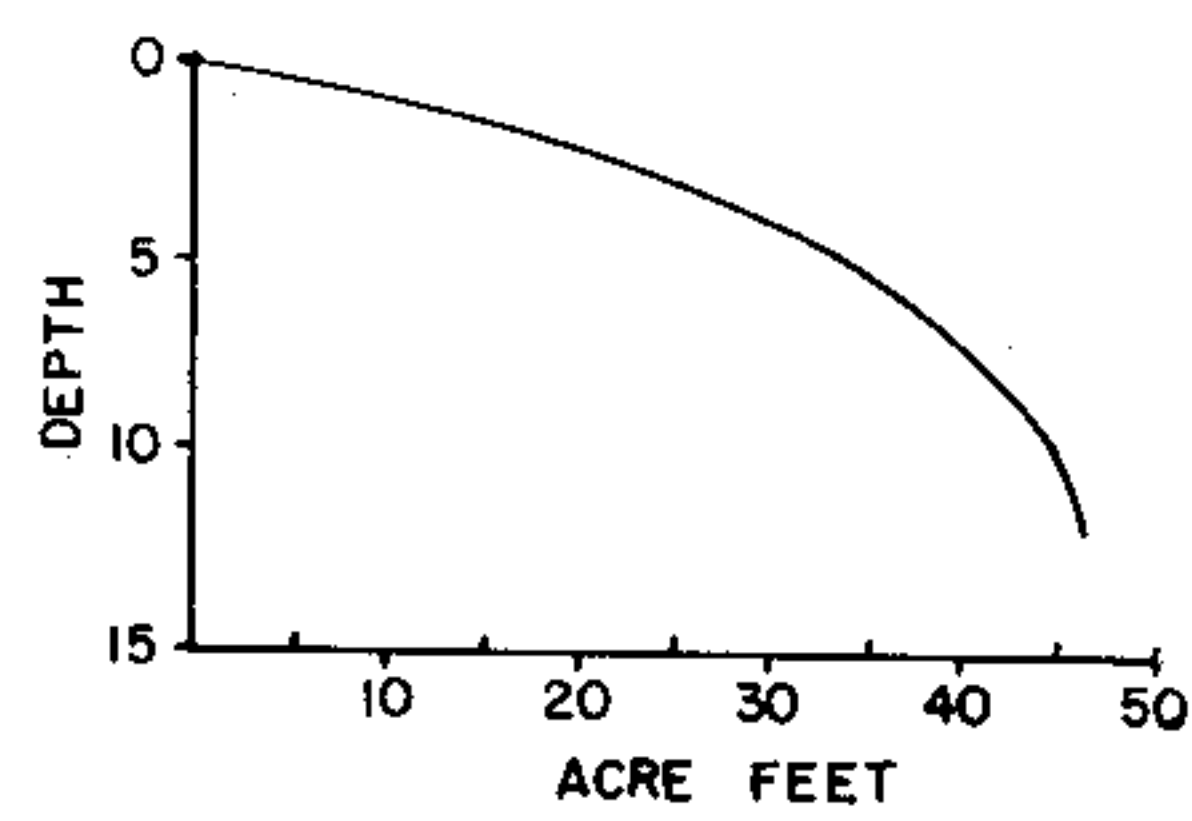
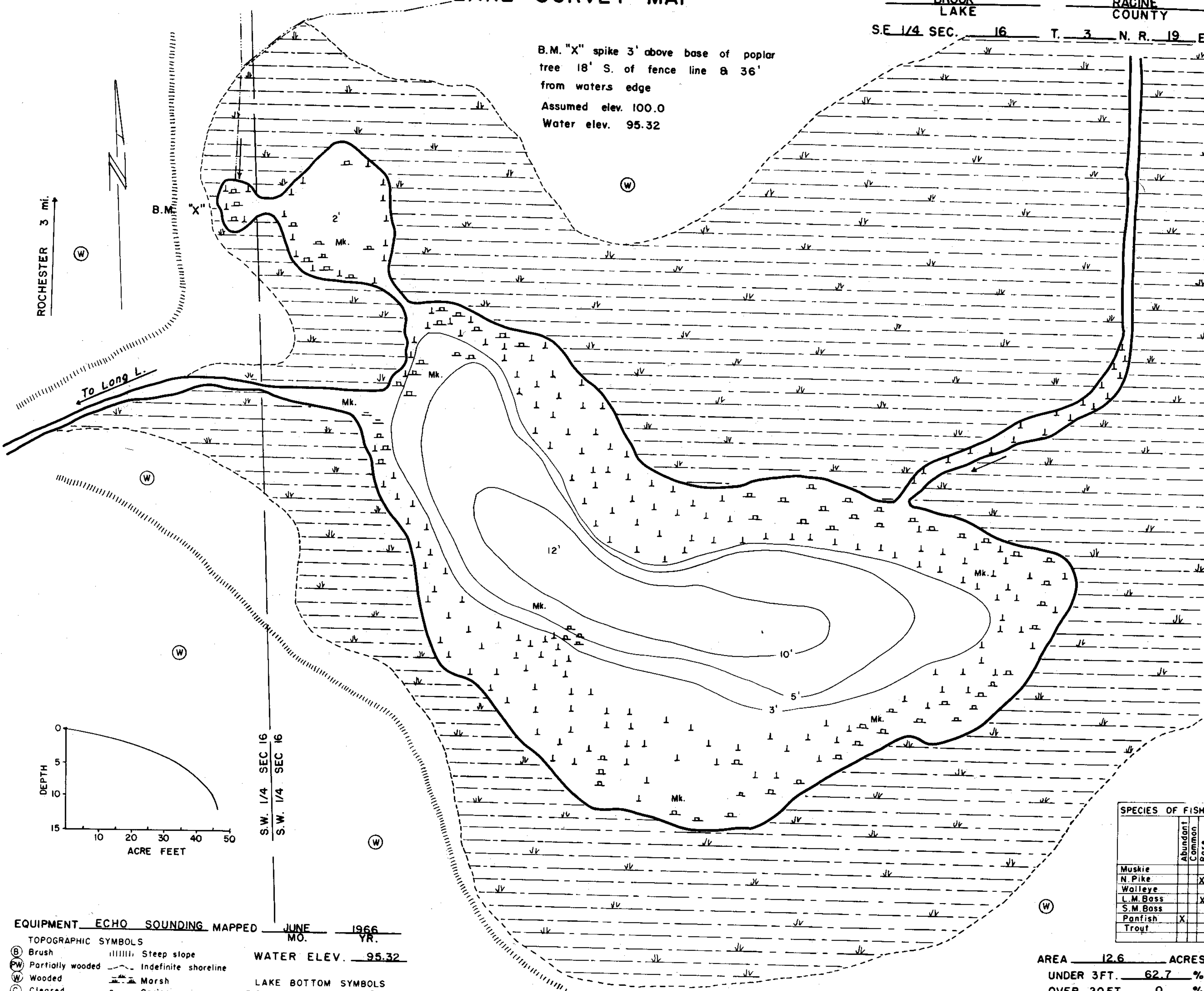


B.M. "X" spike 3' above base of poplar tree 18' S. of fence line & 36' from waters edge
 Assumed elev. 100.0
 Water elev. 95.32

ROCHESTER 3 mi.



S.W. 1/4 SEC 16
 S.W. 1/4 SEC 16

EQUIPMENT ECHO SOUNDING MAPPED JUNE 1966
 MO. YR.
 WATER ELEV. 95.32

- TOPOGRAPHIC SYMBOLS
- (B) Brush
 - (PW) Partially wooded
 - (W) Wooded
 - (C) Cleared
 - (P) Pastured
 - (A) Agricultural
 - B.M. Bench Mark
 - Dwelling
 - ▣ Resort
 - ||||| Steep slope
 - Indefinite shoreline
 - ▬ Marsh
 - o Spring
 - ~ Intermittent stream
 - Permanent inlet
 - ← Permanent outlet
 - ▬ Dam

- LAKE BOTTOM SYMBOLS
- P. Peat
 - Mk. Muck
 - C. Clay
 - M. Marl
 - Sd. Sand
 - St. Silt
 - Gr. Gravel
 - R. Rubble
 - Br. Bedrock
 - T Submergent vegetation
 - ↓ Emergent vegetation
 - ▬ Floating vegetation
 - ⊙ Stumps & Snags



◇ Access ◇ Access with Parking ◇ Boat Livery
 Field work by: H. Schwenn Drawn by: C. Helt

SPECIES OF FISH	Abundance		
	Abundant	Common	Rare
Muskie			
N. Pike			X
Walleye			
L.M. Bass			X
S.M. Bass			
Panfish	X		
Trout			

AREA 12.6 ACRES
 UNDER 3FT. 62.7 %
 OVER 20FT. 0 %
 VOLUME 46 ACRE FT.
 TOTAL ALK. 291 P.P.M.
 SHORELINE 1.2 MILES
 MAX. DEPTH 12 FEET

Source: Wisconsin Department of Natural Resources 608-266-2621
Brock Lake – Racine County, Wisconsin DNR Lake Map
Date – Jun 1966 - Historical Lake Map - Not for Navigation
A Public Document - Please Identify the Source when using it.