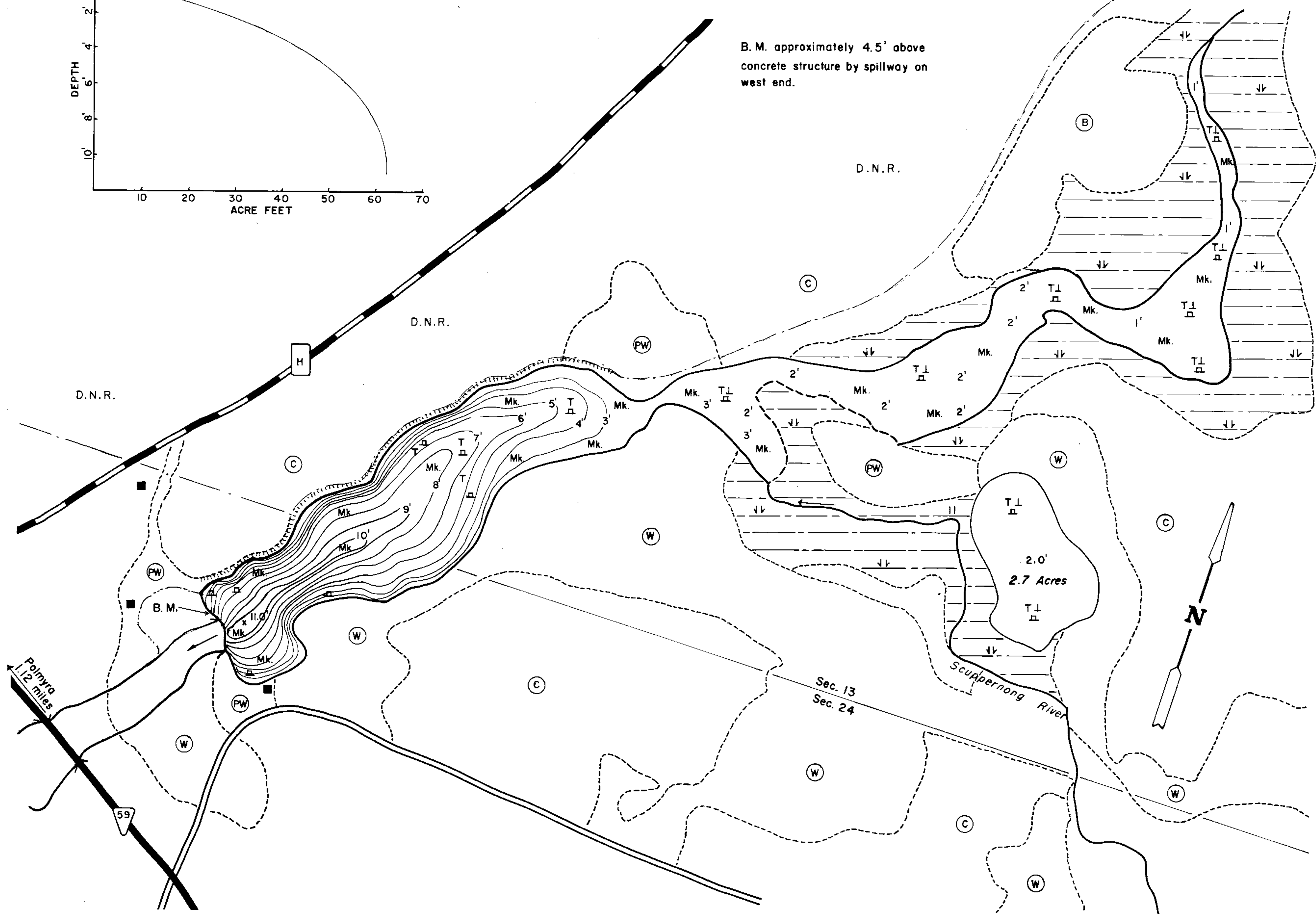


B. M. approximately 4.5' above  
concrete structure by spillway on  
west end.



EQUIPMENT SOUNDING POLE MAPPED JUNE 1970  
TOPOGRAPHIC SYMBOLS MONTH YEAR  
LAKE BOTTOM SYMBOLS

- |                       |                            |             |                             |
|-----------------------|----------------------------|-------------|-----------------------------|
| (B) Brush             | Steep slope                | P. Peat     | B Boulders                  |
| (PW) Partially wooded | - - - Indefinite shoreline | Mk. Muck    | * Stumps & Snags            |
| (W) Wooded            | Marsh                      | C. Clay     | ⊗ Rock danger to navigation |
| (C) Cleared           | ~ ~ ~ Spring               | M. Marl     | T Submergent vegetation     |
| (P) Pastured          | ~ ~ ~ Intermittent stream  | Sd. Sand    | ⊥ Emergent vegetation       |
| (A) Agricultural      | ==== Permanent inlet       | St. Silt    | ⊥ Floating vegetation       |
| B.M. Bench Mark       | ==== Permanent outlet      | Gr. Gravel  | ⊥ Brush shelters            |
| ■ Dwelling            | ⊥ Dam                      | R. Rubble   |                             |
| □ Resort              | D.N.R. State owned land    | Bc. Bedrock |                             |



Access Access with Parking Boat Livery

Drawn by: W. Snyders  
Field work by: M. J. Gappa, J. Bakken

SPECIES OF FISH	Abundant Common Present		
	Abundant	Common	Present
Muskie			
N. Pike			X
Walleye			X
L. M. Bass			X
S. M. Bass			X
Panfish			X
Trout			

WATER AREA 17.2 ACRES  
UNDER 3 FT. 56 %  
OVER 20 FT. 0 %  
MAX. DEPTH 11 FEET.  
TOTAL ALK. 222 P.P.M.  
VOLUME 62.8 ACRE FT.  
SHORELINE 1.67 MILES

Source: Wisconsin Department of Natural Resources 608-266-2621  
Upper Spring Lake – Jefferson County, Wisconsin DNR Lake Map  
Date – Jun 1970 - Historical Lake Map - Not for Navigation  
A Public Document - Please Identify the Source when using it.