

B.M. X' 457-C Bronze tablet, Railroad Commission of Wisconsin, set in top of upstream end of right concrete flume wall of flume gate section
Assumed elevation 101.08'
Water level 98.78' Taken 7/6/71

EQUIPMENT RANGE POLE MAPPED JULY 1971

TOPOGRAPHIC SYMBOLS		LAKE BOTTOM SYMBOLS	
(B) Brush	Steep slope	P. Peat	B Boulders
(PW) Partially wooded	~ Indefinite shoreline	Mk. Muck	o Stumps & Snags
(W) Wooded	~ Marsh	C. Clay	⊛ Rock danger to navigation
(C) Cleared	o Spring	M. Marl	T Submergent vegetation
(P) Pastured	~ Intermittent stream	Sd. Sand	⊥ Emergent vegetation
(A) Agricultural	~ Permanent inlet	St. Silt	⊠ Floating vegetation
B.M. Bench Mark	~ Permanent outlet	Gr. Gravel	⊕ Brush shelters
■ Dwelling	~ Dam	R. Rubble	
□ Resort	D.N.R. State owned land	Br. Bedrock	
⊠ Camp			

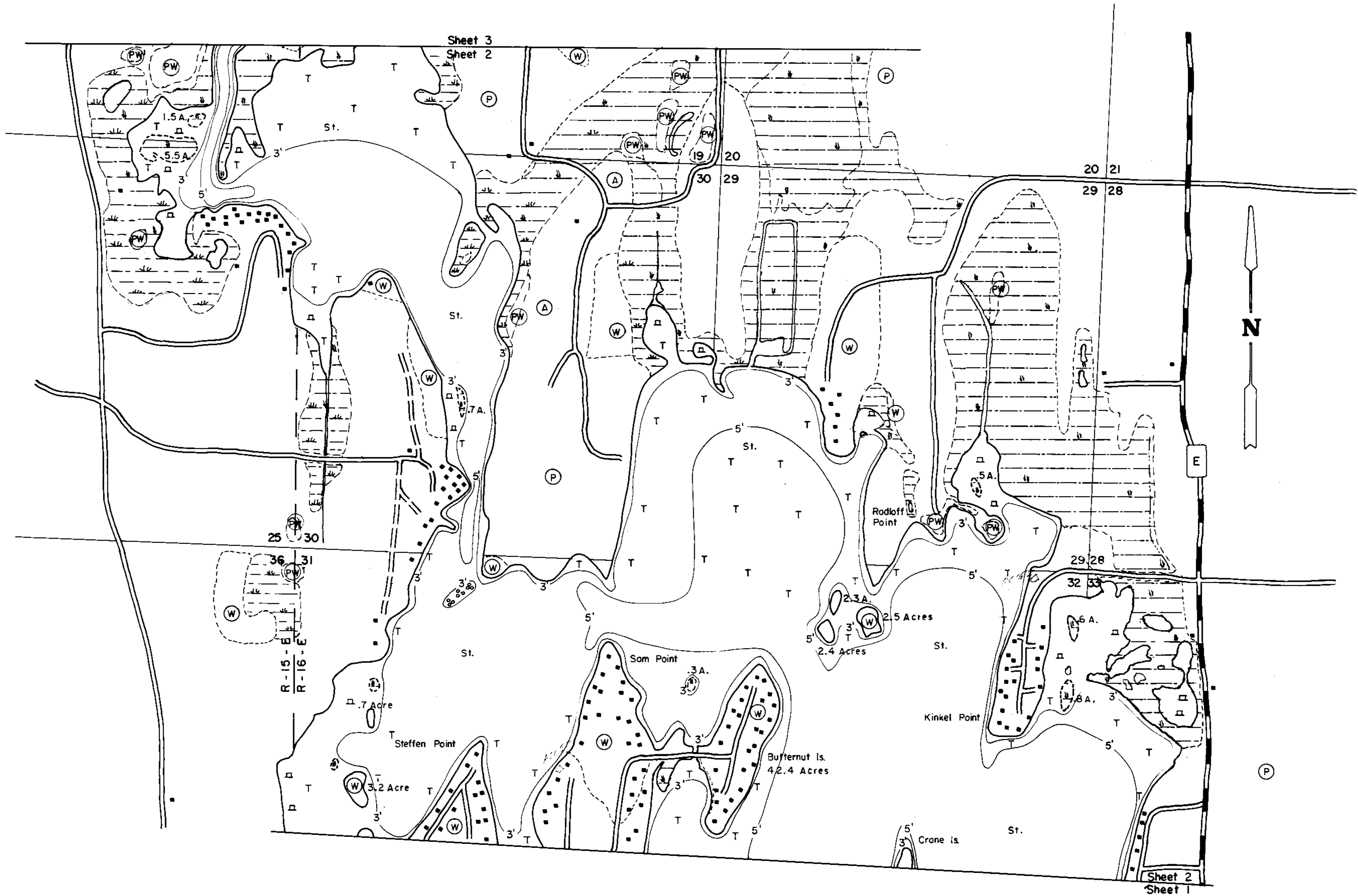


◆ Access ◆ Access with Parking ◆ Boat Livery

Drawn by: C. Holt
Field work by: T. Smith, D. Gendler, T. Janzsch

SPECIES OF FISH	Abundance		
	Abundant	Common	Present
Muskie			
N. Pike			X
Walleye			X
L.M. Bass			
S.M. Bass			
Bullhead	X		
Trout			
Corp	X		

WATER AREA 2854.8 ACRES
 UNDER 3 FT. 20%
 OVER 20 FT. 0%
 MAX. DEPTH 8 FEET.
 TOTAL ALK. 232 P.P.M.
 VOLUME 13,002.8 ACRE FT.
 SHORELINE 41.95 MILES
 WITHOUT ISL 35.53 MILES



EQUIPMENT RANGE POLE MAPPED JULY 1971

- | TOPOGRAPHIC SYMBOLS | | LAKE BOTTOM SYMBOLS | |
|-----------------------|-------------------------------|---------------------|-------------------------------|
| (B) Brush | () Steep slope | P. Peat | B Boulders |
| (PW) Partially wooded | (---) Indefinite shoreline | Mk. Muck | o Stumps & Snags |
| (W) Wooded | () Marsh | C. Clay | (*) Rock danger to navigation |
| (C) Cleared | (o) Spring | M. Marl | T Submergent vegetation |
| (P) Pastured | (---) Intermittent stream | Sd. Sand | (I) Emergent vegetation |
| (A) Agricultural | (---) Permanent inlet | St. Silt | (F) Floating vegetation |
| B.M. Bench Mark | (---) Permanent outlet | Gr. Gravel | (B) Brush shelters |
| (■) Dwelling | (---) Dam | R. Rubble | |
| (■) Resort | (---) D.N.R. State owned land | Br. Bedrock | |
| (■) Camp | | | |

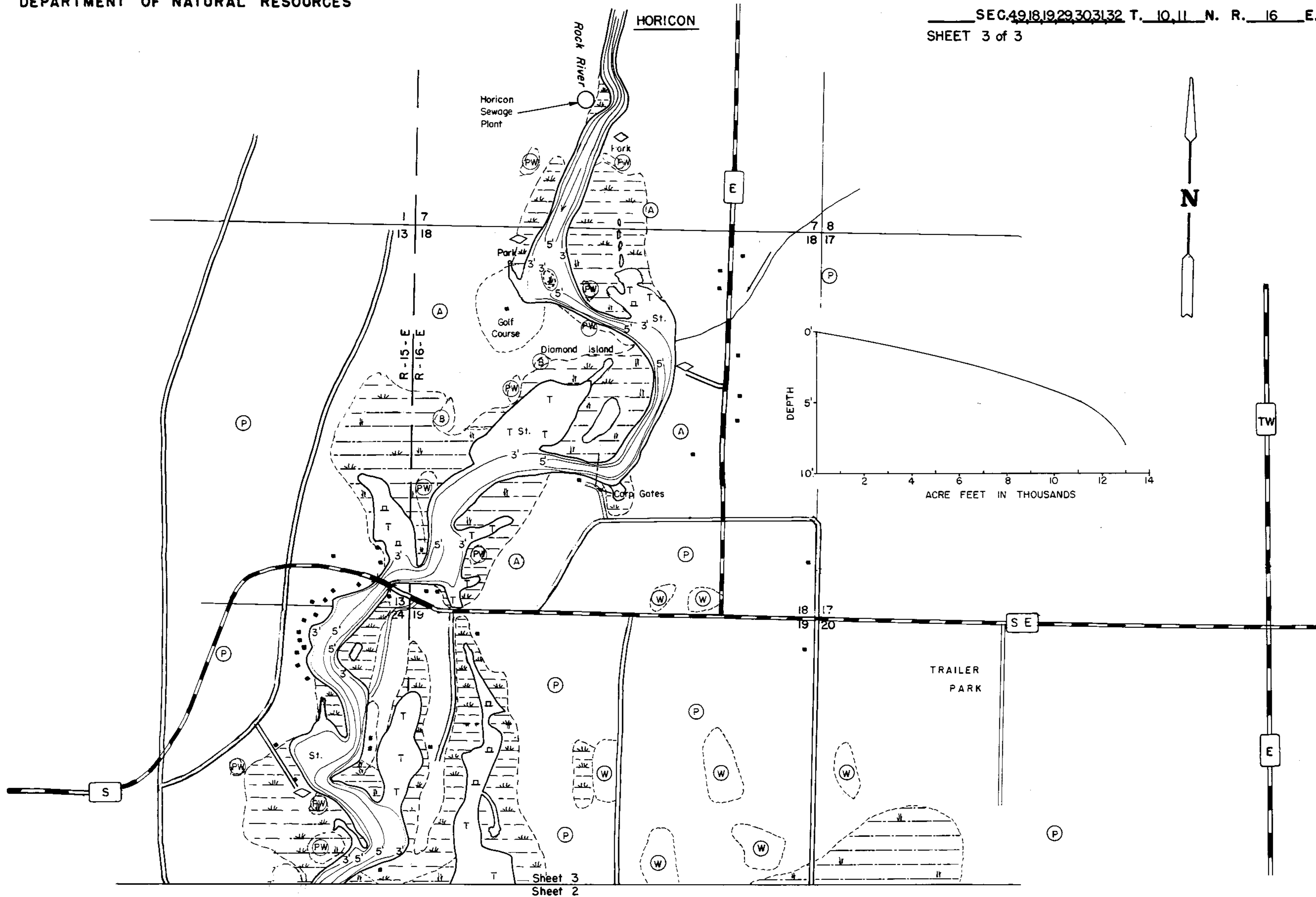


Drawn by: C. Holt
Field work by: T. Smith, D. Gengler, T. Janisch

SPECIES OF FISH	Abundance		
	Abundant	Common	Present
Muskie			
N. Pike			
Walleye			X
L. M. Boss			
S. M. Boss			
Bullhead	X		
Trout			
Carp	X		

WATER AREA 2854.8 ACRES
 UNDER 3 FT. 20 %
 OVER 20 FT. 0 %
 MAX. DEPTH 8 FEET.
 TOTAL ALK. 232 P.P.M.
 VOLUME 13,002.8 ACRE FT.
 SHORELINE 41.95 MILES
 WITHOUT ISL. 35.53 MILES

LAKE SURVEY MAP



EQUIPMENT	RANGE	POLE	MAPPED	JULY	1971
TOPOGRAPHIC SYMBOLS			LAKE BOTTOM SYMBOLS		
(B) Brush		Steep slope	P. Peat	B Boulders	
(PW) Partially wooded		Indefinite shoreline	Mk. Muck	o Stumps & Snags	
(W) Wooded		Marsh	C. Clay	⊗ Rock danger to navigation	
(C) Cleared		Spring	M. Marl	T Submergent vegetation	
(P) Pastured		Intermittent stream	Sd. Sand	⊥ Emergent vegetation	
(A) Agricultural		Permanent inlet	St. Silt	⊥ Floating vegetation	
B.M. Bench Mark		Permanent outlet	Gr. Gravel	⊥ Brush shelters	
■ Dwelling		Dam	R. Rubble		
■ Resort		D.N.R. State owned land	Bc. Bedrock		
■ Camp					



◆ Access ◆ Access with Parking ◆ Boat Livery

Drawn by: C. Holt
Field work by: T. Smith, D. Gengler, T. Janisch

SPECIES OF FISH	MAPPED		
	Abundant	Common	Present
Muskie			
N. Pike			X
Walleye			
L. M. Bass			
S. M. Bass			
Bullhead	X		
Trout			
Corp	X		

WATER AREA 2854.8 ACRES
 UNDER 3 FT. 20 %
 OVER 20 FT. 0 %
 MAX. DEPTH 8 FEET.
 TOTAL ALK. 232 P.P.M.
 VOLUME 13,002.8 ACRE FT.
 SHORELINE 41.95 MILES
 WITHOUT ISL. 35.53 MILES

Source: Wisconsin Department of Natural Resources 608-266-2621
Sinissippi Lake - Dodge County, Wisconsin DNR Lake Map
Date – Jul 1971 - Historical Lake Map - Not for Navigation
A Public Document - Please Identify the Source when using it.