

EQUIPMENT RECORDING SONAR MAPPED JULY 1969
MONTH YEAR

- TOPOGRAPHIC SYMBOLS**
- (B) Brush
 - (FW) Partially wooded
 - (W) Wooded
 - (C) Cleared
 - (P) Pastured
 - (A) Agricultural
 - B.M. Bench Mark
 - Dwelling
 - Resort
 - ⊞ Camp
 - ||||| Steep slope
 - ~ Indefinite shoreline
 - Marsh
 - Spring
 - Intermittent stream
 - Permanent inlet
 - Permanent outlet
 - Dam
 - D.N.R. State owned land

- LAKE BOTTOM SYMBOLS**
- P. Peat
 - Mk. Muck
 - C. Clay
 - M. Marl
 - Sd. Sand
 - Sl. Silt
 - Gr. Gravel
 - R. Rubble
 - Br. Bedrock
 - B Boulders
 - Stumps & Snags
 - Rock danger to navigation
 - T Submergent vegetation
 - Emergent vegetation
 - Floating vegetation
 - Brush shelters



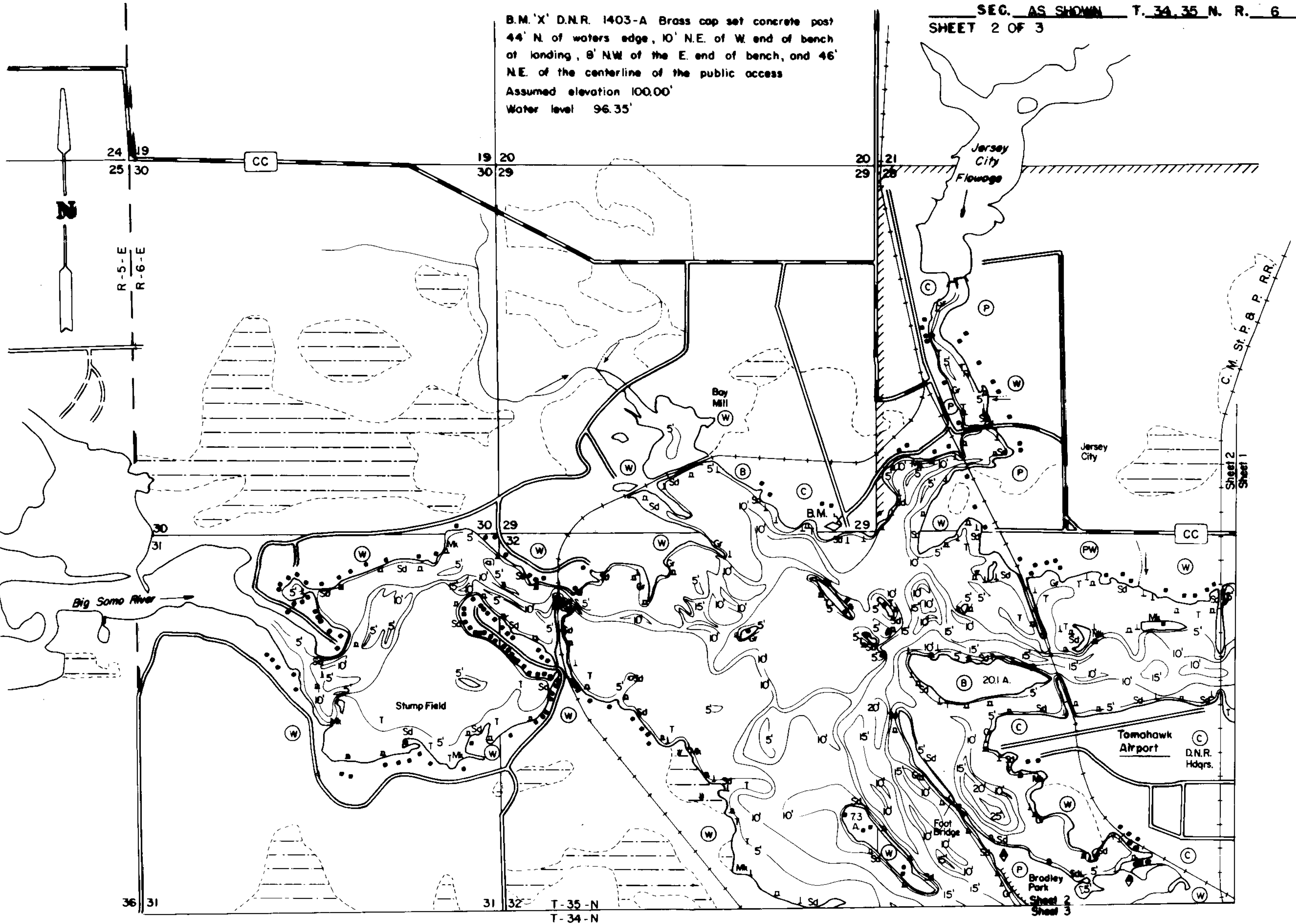
Access Access with Parking Boat Livery

Drawn by: C. Holt
Field work by: P. Michelson, J. Smith

SPECIES OF FISH	Abundance		
	Abundant	Common	Present
Walleye		X	X
L. N. Bass		X	X
S. W. Bass		X	X
Panfish	X		
Trout			

WATER AREA 1909.6 ACRES
UNDER 3 FT. 20 %
OVER 20 FT. 0.3 %
MAX. DEPTH 25 FEET.
TOTAL ALK. 32 P.P.M.
VOLUME 16,540 ACRE FT.
SHORELINE 30.12 MILES
SHORELINE 35.15 MILES WITH IS.

B.M. 'X' D.N.R. 1403-A Brass cap set concrete post
44' N. of waters edge, 10' N.E. of W. end of bench
at landing, 8' NW of the E. end of bench, and 46'
N.E. of the centerline of the public access
Assumed elevation 100.00'
Water level 96.35'



EQUIPMENT RECORDING SONAR MAPPED JULY 1969
MONTH YEAR

- TOPOGRAPHIC SYMBOLS**
- (B) Brush
 - (PW) Partially wooded
 - (W) Wooded
 - (C) Cleared
 - (P) Pastured
 - (A) Agricultural
 - B.M. Bench Mark
 - Dwelling
 - Resort
 - Camp

- LAKE BOTTOM SYMBOLS**
- P. Peat
 - Mk. Muck
 - C. Clay
 - M. Marl
 - Sd. Sand
 - St. Silt
 - Gr. Gravel
 - R. Rubble
 - Br. Bedrock
 - B Boulders
 - ⊙ Stumps & Snags
 - ⊙ Rock danger to navigation
 - T Submergent vegetation
 - ⊥ Emergent vegetation
 - ⊥ Floating vegetation
 - ⊥ Brush shelters

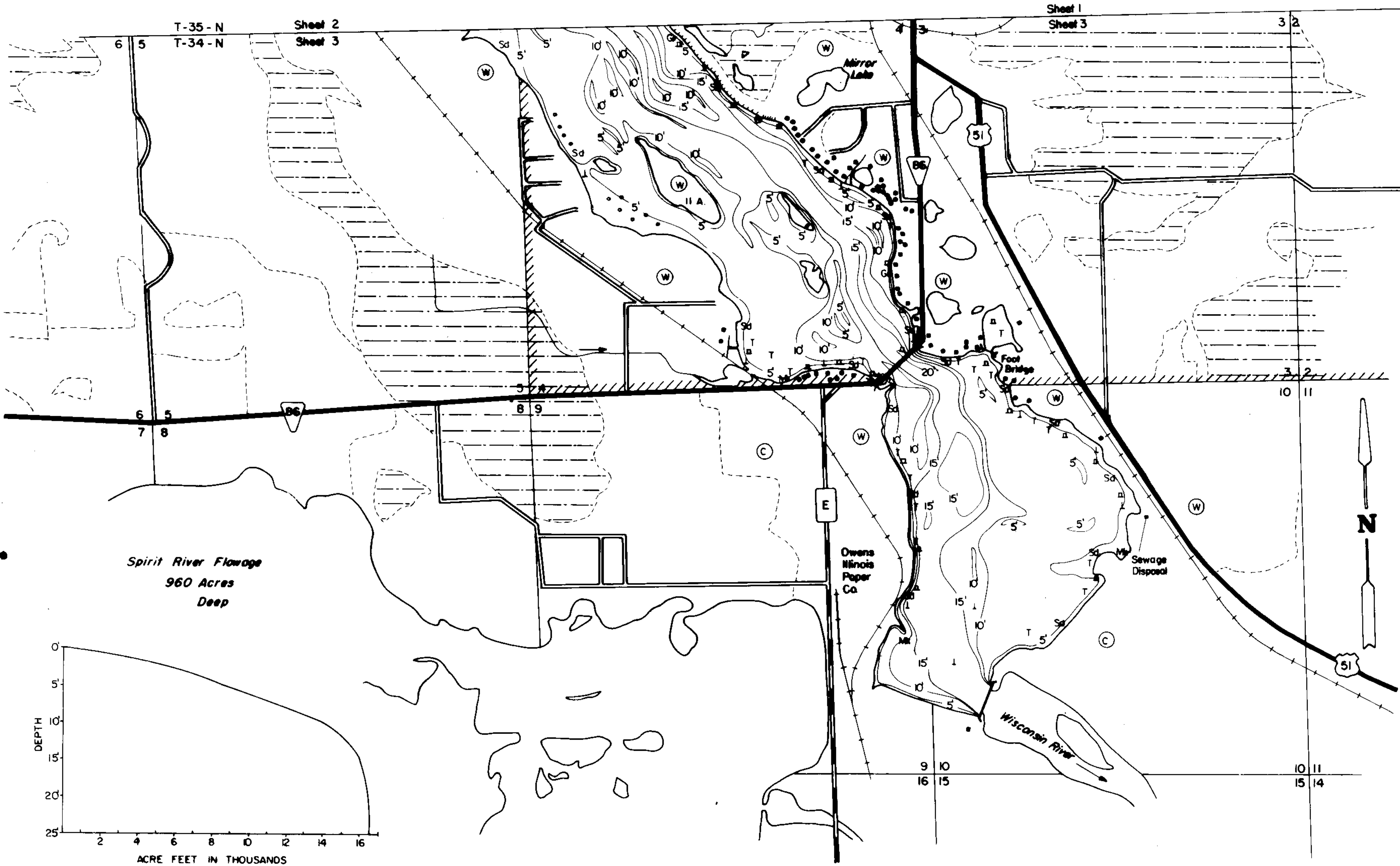


◆ Access ◆ Access with Parking ◆ Boat Livery

Drawn by: C. Holt
Field work by: P. Michelson, J. Smith

SPECIES OF FISH	ABUNDANCE		
	Abundant	Common	Present
Muskie			X
N. Pike		X	
Walleye			X
L. M. Bass			X
S. M. Bass			X
Panfish	X		
Trout			

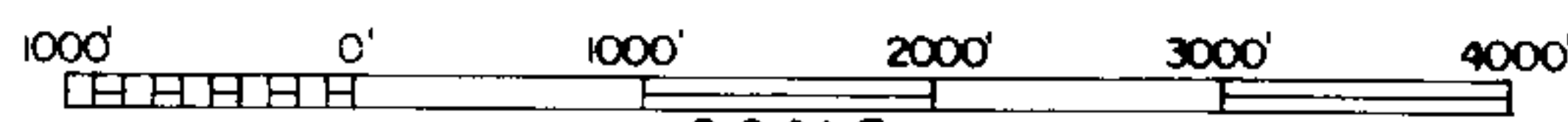
WATER AREA 1909.6 ACRES
UNDER 3 FT. 20 %
OVER 20 FT. 0.3 %
MAX. DEPTH 25 FEET.
TOTAL ALK. 32 P.P.M.
VOLUME 16,540 ACRE FT.
SHORELINE 30.12 MILES
SHORELINE 35.15 MILES WITH IS.



EQUIPMENT RECORDING SONAR MAPPED JULY 1969

- TOPOGRAPHIC SYMBOLS
- (B) Brush
 - (PW) Partially wooded
 - (W) Wooded
 - (C) Cleared
 - (P) Pastured
 - (A) Agricultural
 - B.M. Bench Mark
 - Dwelling
 - Resort
 - ⊠ Camp
 - ||||| Steep slope
 - - - Indefinite shoreline
 - Marsh
 - Spring
 - Intermittent stream
 - Permanent inlet
 - Permanent outlet
 - Dam
 - D.N.R. State owned land

- LAKE BOTTOM SYMBOLS
- P. Peat
 - Mk. Muck
 - C. Clay
 - M. Marl
 - Sd. Sand
 - St. Silt
 - Gr. Gravel
 - R. Rubble
 - Br. Bedrock
 - B Boulders
 - Stumps & Snags
 - Rock danger to navigation
 - T Submergent vegetation
 - ↓ Emergent vegetation
 - △ Floating vegetation
 - Brush shelters



Access Access with Parking Boat Livery
 Drawn by: C. Holt
 Field work by: P. Michelson, J. Smith

SPECIES OF FISH	Abundance		
	Abundant	Common	Present
Muskie			X
N. Pike	X		
Walleye		X	
L. M. Bass			X
S. M. Bass			X
Panfish	X		
Trout			

WATER AREA 1909.6 ACRES
 UNDER 3 FT. 20 %
 OVER 20 FT. 0.3 %
 MAX. DEPTH 25 FEET.
 TOTAL ALK. 32 P.P.M.
 VOLUME 16,540 ACRE FT.
 SHORELINE 30.12 MILES
 SHORELINE 35.15 MILES WITH IS.

Source: Wisconsin Department of Natural Resources 608-266-2621
Mohawksin Lake - Lincoln County, Wisconsin DNR Lake Map
Date – Jul 1969 - Historical Lake Map - Not for Navigation
A Public Document - Please Identify the Source when using it.