

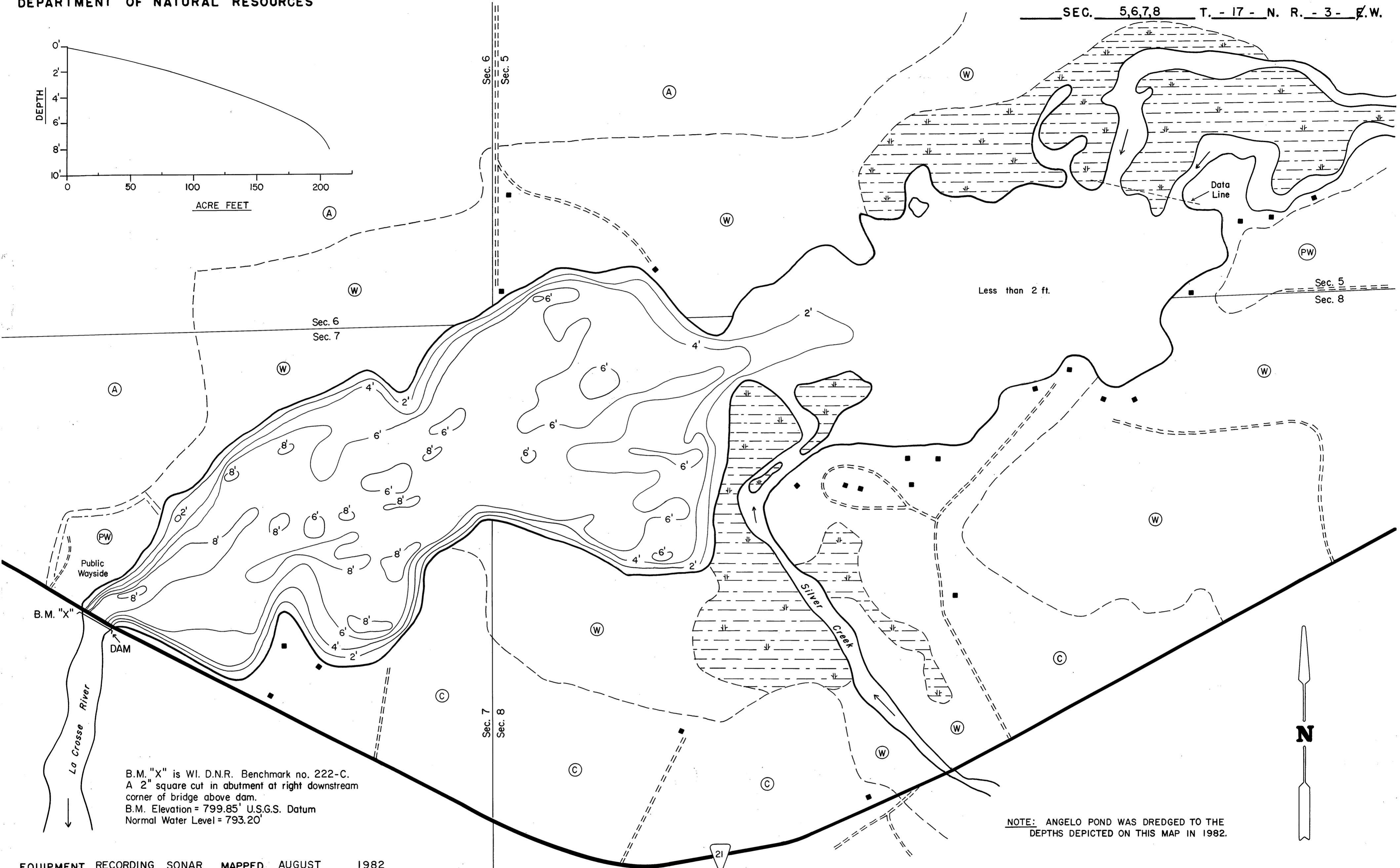
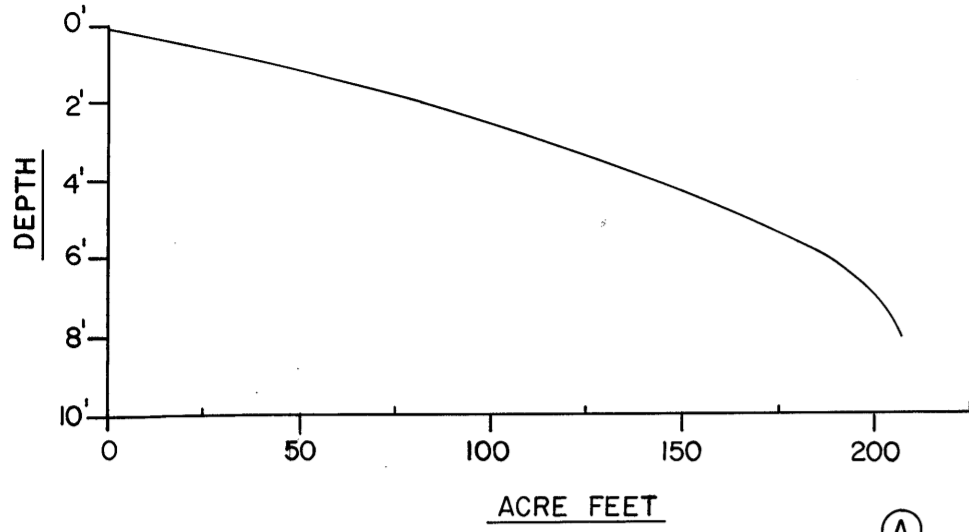
# LAKE SURVEY MAP

ANGELO POND  
LAKE

MONROE  
COUNTY

SEC. 5,6,7,8

T. - 17 - N. R. - 3 - E.W.



B.M. "X" is WI. D.N.R. Benchmark no. 222-C.  
A 2" square cut in abutment at right downstream  
corner of bridge above dam.  
B.M. Elevation = 799.85' U.S.G.S. Datum  
Normal Water Level = 793.20'

NOTE: ANGELO POND WAS DREDGED TO THE  
DEPTHS DEPICTED ON THIS MAP IN 1982.

EQUIPMENT RECORDING SONAR MAPPED AUGUST 1982  
MONTH YEAR  
LAKE BOTTOM SYMBOLS

- |                       |                               |             |                             |
|-----------------------|-------------------------------|-------------|-----------------------------|
| (B) Brush             | Steep slope                   | P. Peat     | B Boulders                  |
| (PW) Partially wooded | ----- Indefinite shoreline    | Mk. Muck    | o Stumps & Snags            |
| (W) Wooded            | Marsh                         | C. Clay     | ⊗ Rock danger to navigation |
| (C) Cleared           | o Spring                      | M. Marl     | T Submergent vegetation     |
| (P) Pastured          | ----- Intermittent stream     | Sd. Sand    | ⊥ Emergent vegetation       |
| (A) Agricultural      | ==== Permanent inlet          | St. Silt    | ⊥ Floating vegetation       |
| B.M. Bench Mark       | ==== Permanent outlet         | Gr. Gravel  | ⊥ Brush shelters            |
| ■ Dwelling            | ⊥ Dam                         | R. Rubble   |                             |
| □ Resort              | ----- D.N.R. State owned land | Br. Bedrock |                             |
| □ Camp                |                               |             |                             |



◆ Access    ◆ Access with Parking    ◆ Boat Livery  
Drawn by: J.A. Koppa 10/83  
Field work by: Fred G. Michaels & Assoc., Black River Falls, WI.

| SPECIES OF FISH | ABUNDANCE |        |         |
|-----------------|-----------|--------|---------|
|                 | Abundant  | Common | Present |
| Muskie          |           |        |         |
| N. Pike         |           |        |         |
| Walleye         |           |        |         |
| L.M. Bass       |           |        |         |
| S.M. Bass       |           |        |         |
| Panfish         |           |        |         |
| Trout           |           |        |         |

WATER AREA 52.9 ACRES  
UNDER 3 FT. 52 %  
OVER 20 FT. 0 %  
MAX. DEPTH 8 FEET.  
TOTAL ALK. 43 P.P.M.  
VOLUME 206 ACRE FT.  
MAIN SHORELINE 2.1 MI.  
ISLAND SHORELINE 0 MI.

Source: Wisconsin Department of Natural Resources 608-266-2621  
Angelo Pond – Monroe County, Wisconsin DNR Lake Map  
Date – Aug 1982 - Historical Lake Map - Not for Navigation  
A Public Document - Please Identify the Source when using it.