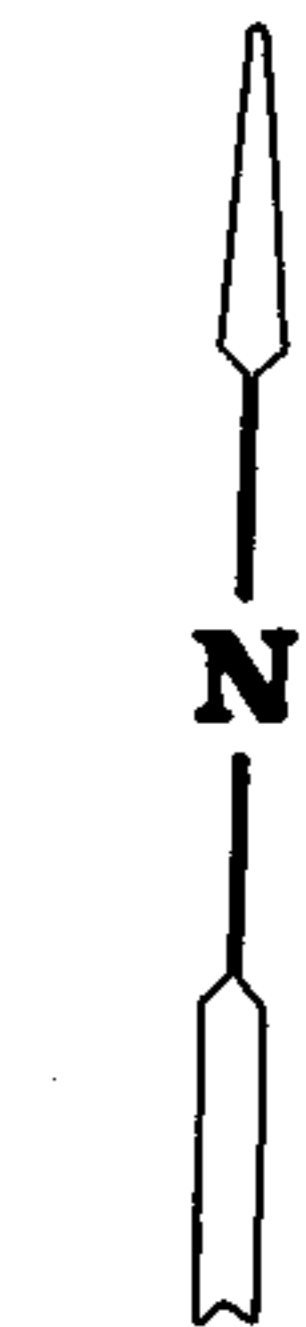
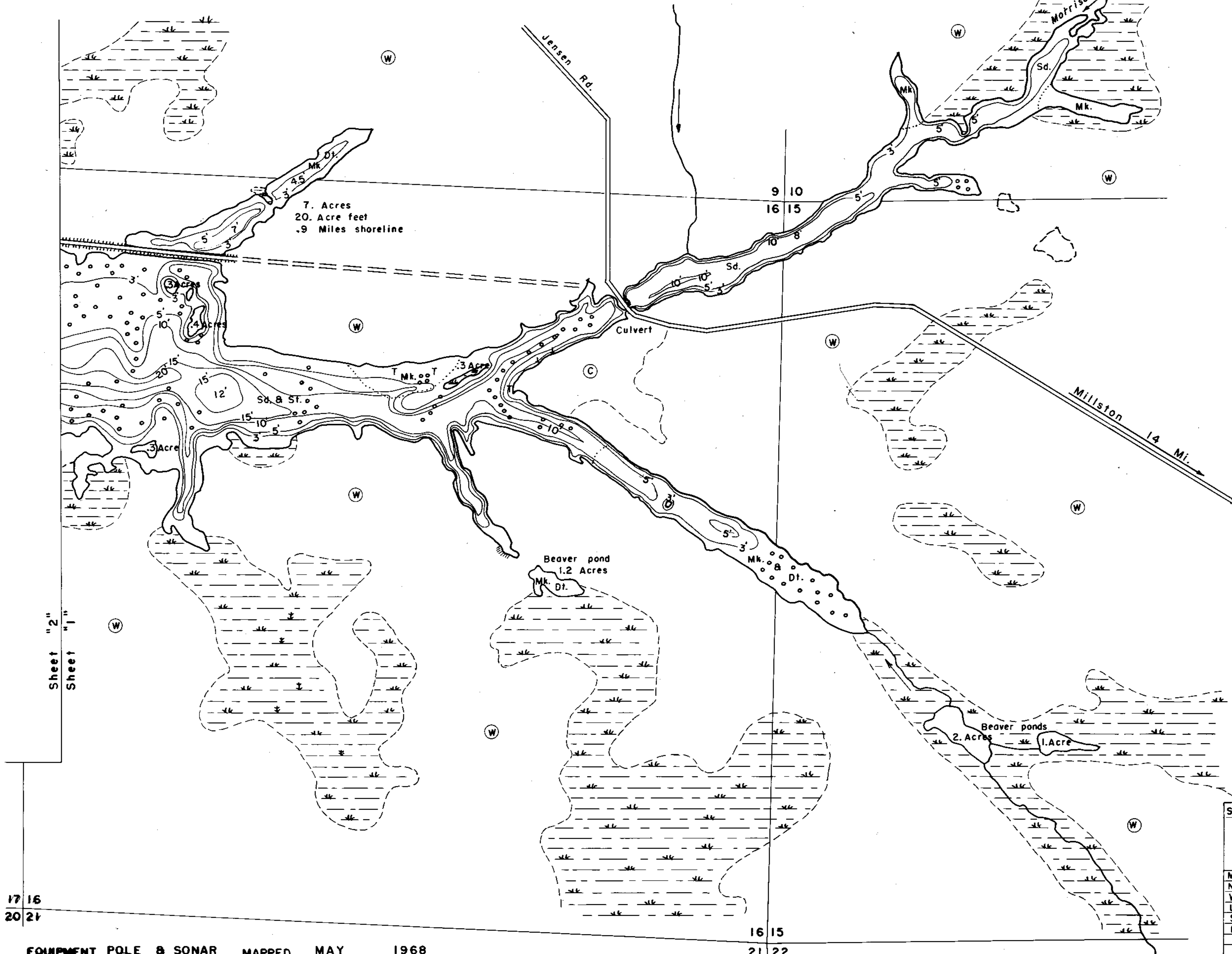


LAKE SURVEY MAP

POTTER FLOWAGE LAKE
JACKSON COUNTY
SEC. 16, 17, 20 T. -21- N. R. -1- P.W.

(Sheet 1 of 3)

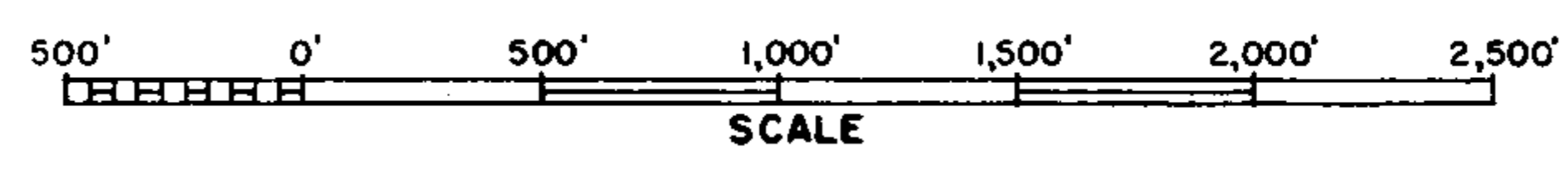


SPECIES OF FISH		
	Abundant	Common
Muskie		X
N. Pike		X
Walleye		
L. M. Bass		X
S. M. Bass	X	
Panfish		
Trout		

EQUIPMENT POLE & SONAR MAPPED MAY 1968
MO. YR.

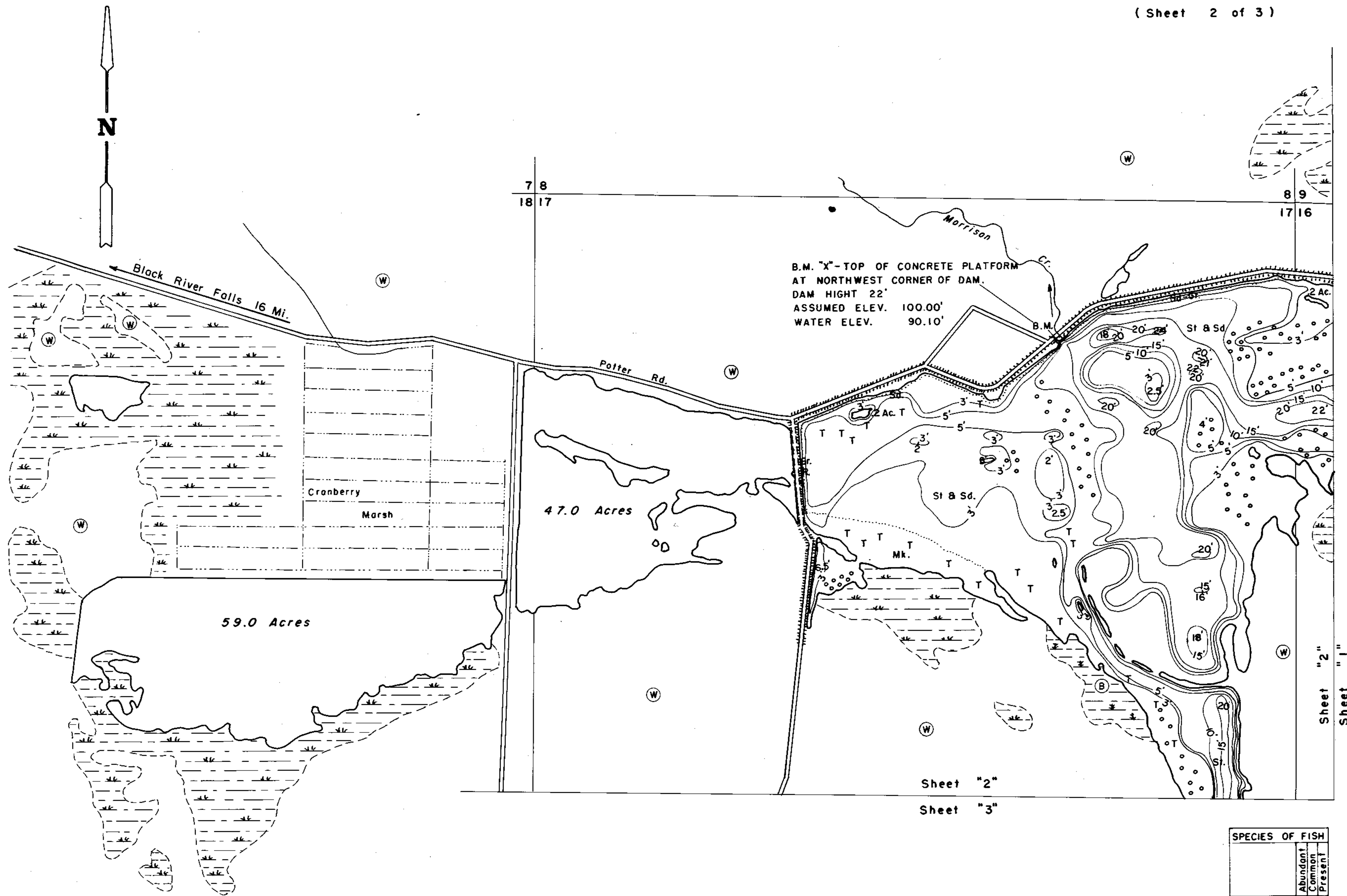
- TOPOGRAPHIC SYMBOLS
- Brush
 - ▨ Partially wooded
 - ⊙ Wooded
 - Cleared
 - ⊖ Pastured
 - ⊕ Agricultural
 - ⊗ Bench Work
 - ⊘ Dwelling
 - ⊙ Resort
 - ▧ Steep slope
 - Indefinite shoreline
 - ▨ Marsh
 - ⊙ Spring
 - Intermittent stream
 - Permanent inlet
 - Permanent outlet
 - ⊕ Dam
- LAKE BOTTOM SYMBOLS
- P. Peat
 - Mk. Muck
 - C. Clay
 - M. Marl
 - Sd. Sand
 - St. Silt
 - Gr. Gravel
 - R. Rubble
 - Br. Bedrock
 - ⊙ Stumps & Snags
 - Dt. Detritus
 - T Submergent vegetation
 - ⊥ Emergent vegetation
 - Floating vegetation

WATER ELEV. 90.10'



◇ Access ◊ Access with Parking ◆ Boat Livery
Field work by: R. Chap Drawn by: E. Eaton

AREA 347.5 ACRES
UNDER 3FT. 31%
OVER 20FT. 1%
VOLUME 2,275 ACRE FT.
TOTAL ALK. 5 P.P.M.
SHORELINE 15 MILES
MAX. DEPTH 24 FEET



B.M. "X" - TOP OF CONCRETE PLATFORM
AT NORTHWEST CORNER OF DAM.
DAM HIGHT 22'
ASSUMED ELEV. 100.00'
WATER ELEV. 90.10'

Sheet "2"
Sheet "1"

Sheet "2"
Sheet "3"

SPECIES OF FISH		
	Abundant	Common
Muskie		X
N. Pike		X
Walleye		
L.M. Bass	X	
S.M. Bass		
Panfish	X	
Trout		

EQUIPMENT POLE & SONAR MAPPED MAY 1968
MO. YR.

- TOPOGRAPHIC SYMBOLS
- ⊙ Brush
 - ⊙ Partially wooded
 - ⊙ Wooded
 - ⊙ Cleared
 - ⊙ Pastured
 - ⊙ Agricultural
 - B.M. Bench Mark
 - Dwelling
 - ⊙ Resort
 - ||||| Steep slope
 - Indefinite shoreline
 - ⊙ Marsh
 - ⊙ Spring
 - ⊙ Intermittent stream
 - ⊙ Permanent inlet
 - ⊙ Permanent outlet
 - ⊙ Dam

- LAKE BOTTOM SYMBOLS
- P. Peat
 - Mk. Muck
 - C. Clay
 - M. Marl
 - Sd. Sand
 - St. Silt
 - Gr. Gravel
 - R. Rubble
 - Br. Bedrock
 - ⊙ Stumps & Snags
 - T Submergent vegetation
 - ⊙ Emergent vegetation
 - ⊙ Floating vegetation

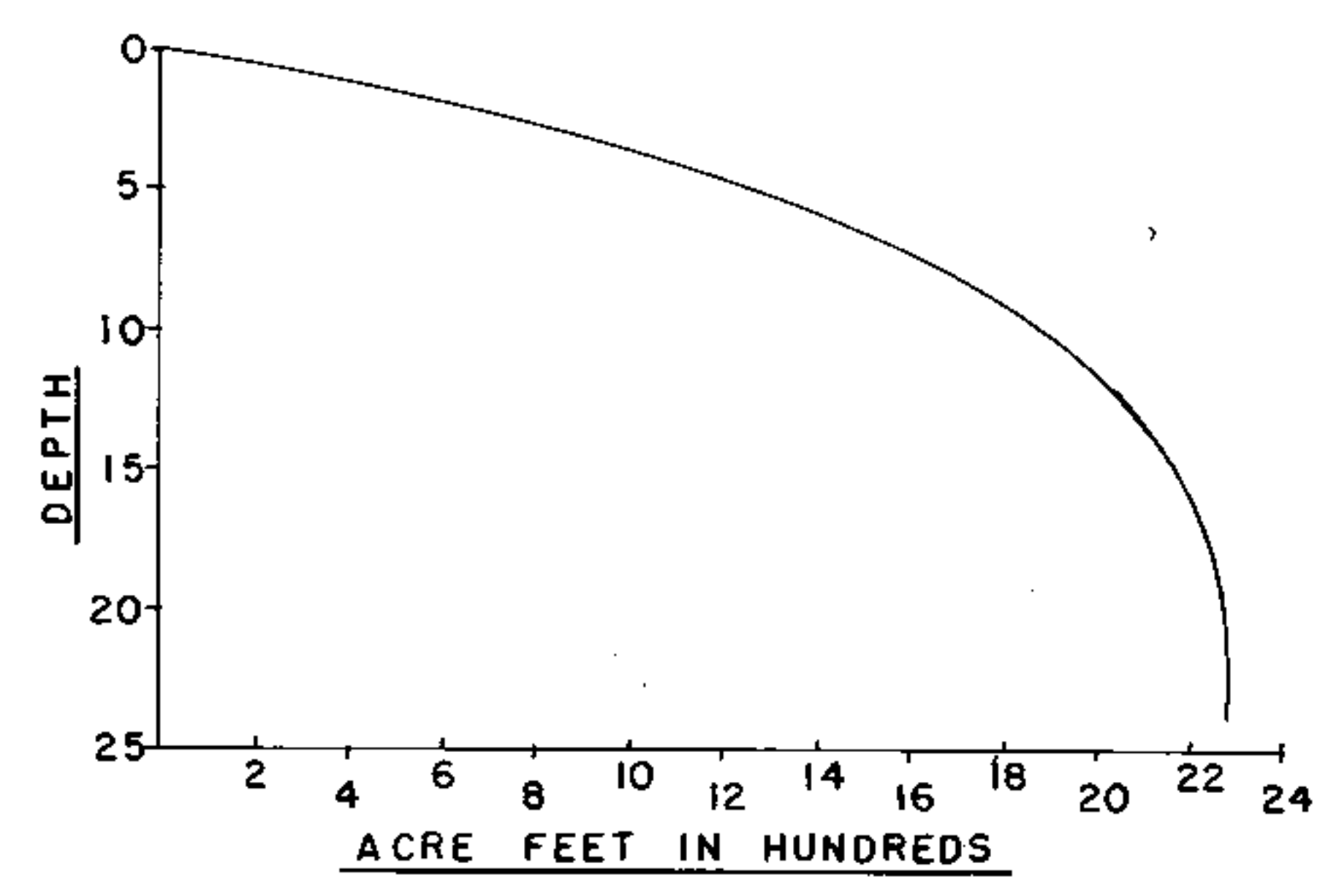
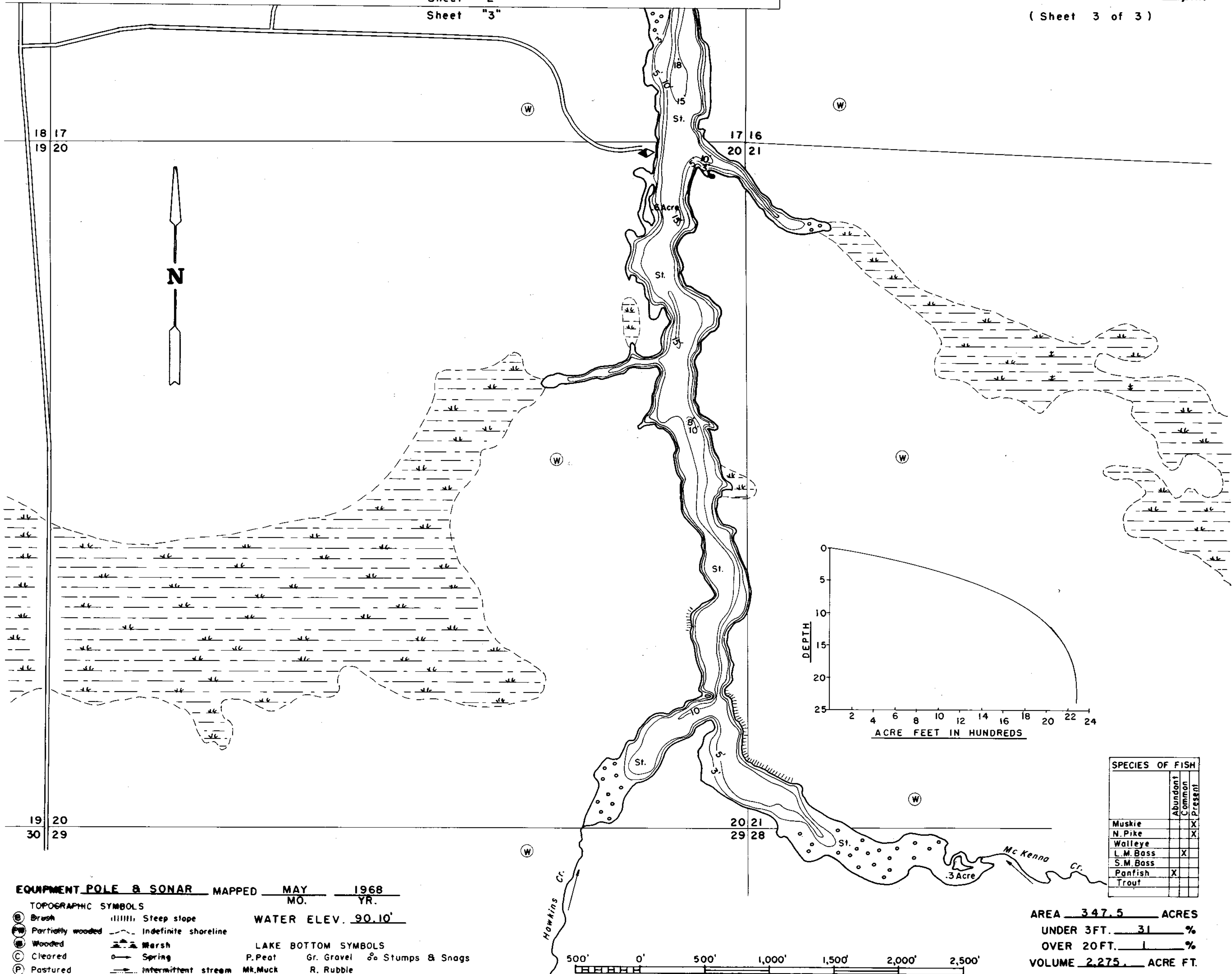
WATER ELEV. 90.10



◇ Access ◈ Access with Parking ◈ Boat Livery
Field work by: R. Chap Drawn by: E. Eaton

AREA 347.5 ACRES
UNDER 3FT. 31%
OVER 20FT. 1%
VOLUME 2,275 ACRE FT.
TOTAL ALK. 5 P.P.M.
SHORELINE 15 MILES
MAX. DEPTH 24 FEET

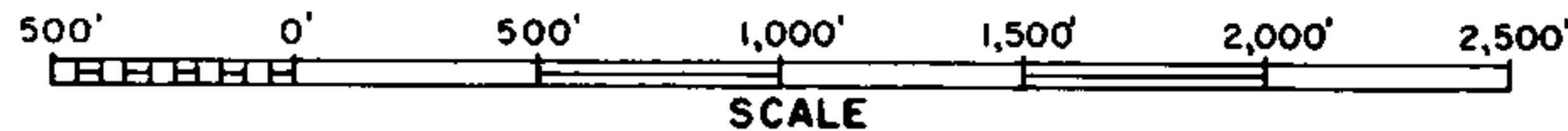
Sheet "2"
Sheet "3"



SPECIES OF FISH		
	Abundant	Common
Muskie		X
N. Pike		X
Walleye		X
L. M. Bass	X	
S. M. Bass		
Panfish	X	
Trout		

EQUIPMENT POLE & SONAR MAPPED MAY 1968
MO. YR.

- TOPOGRAPHIC SYMBOLS
- ⊙ Brush
 - ⊙ Partially wooded
 - ⊙ Wooded
 - ⊙ Cleared
 - ⊙ Pastured
 - ⊙ Agricultural
 - B.M. Bench Mark
 - Dwelling
 - ⊙ Resort
- WATER ELEV. 90.10'
- LAKE BOTTOM SYMBOLS
- ||||| Steep slope
 - ~ Indefinite shoreline
 - Marsh
 - Spring
 - Intermittent stream
 - Permanent inlet
 - Permanent outlet
 - Dam
 - P. Peat
 - MK. Muck
 - C. Clay
 - M. Marl
 - Sd. Sand
 - St. Silt
 - Gr. Gravel
 - R. Rubble
 - Br. Bedrock
 - T Submergent vegetation
 - ↓ Emergent vegetation
 - ⊙ Stumps & Snags
 - ⊙ Floating vegetation



◇ Access ◀ Access with Parking ◆ Boat Livery
Field work by: R. Chap Drawn by: E. Eaton

AREA 347.5 ACRES
UNDER 3FT. 31 %
OVER 20FT. 1 %
VOLUME 2,275 ACRE FT.
TOTAL ALK. 5 P.P.M.
SHORELINE 15 MILES
MAX. DEPTH 24 FEET

Source: Wisconsin Department of Natural Resources 608-266-2621
Potter Flowage – Jackson County, Wisconsin DNR Lake Map
Date – May 1968 - Historical Lake Map - Not for Navigation
A Public Document - Please Identify the Source when using it.