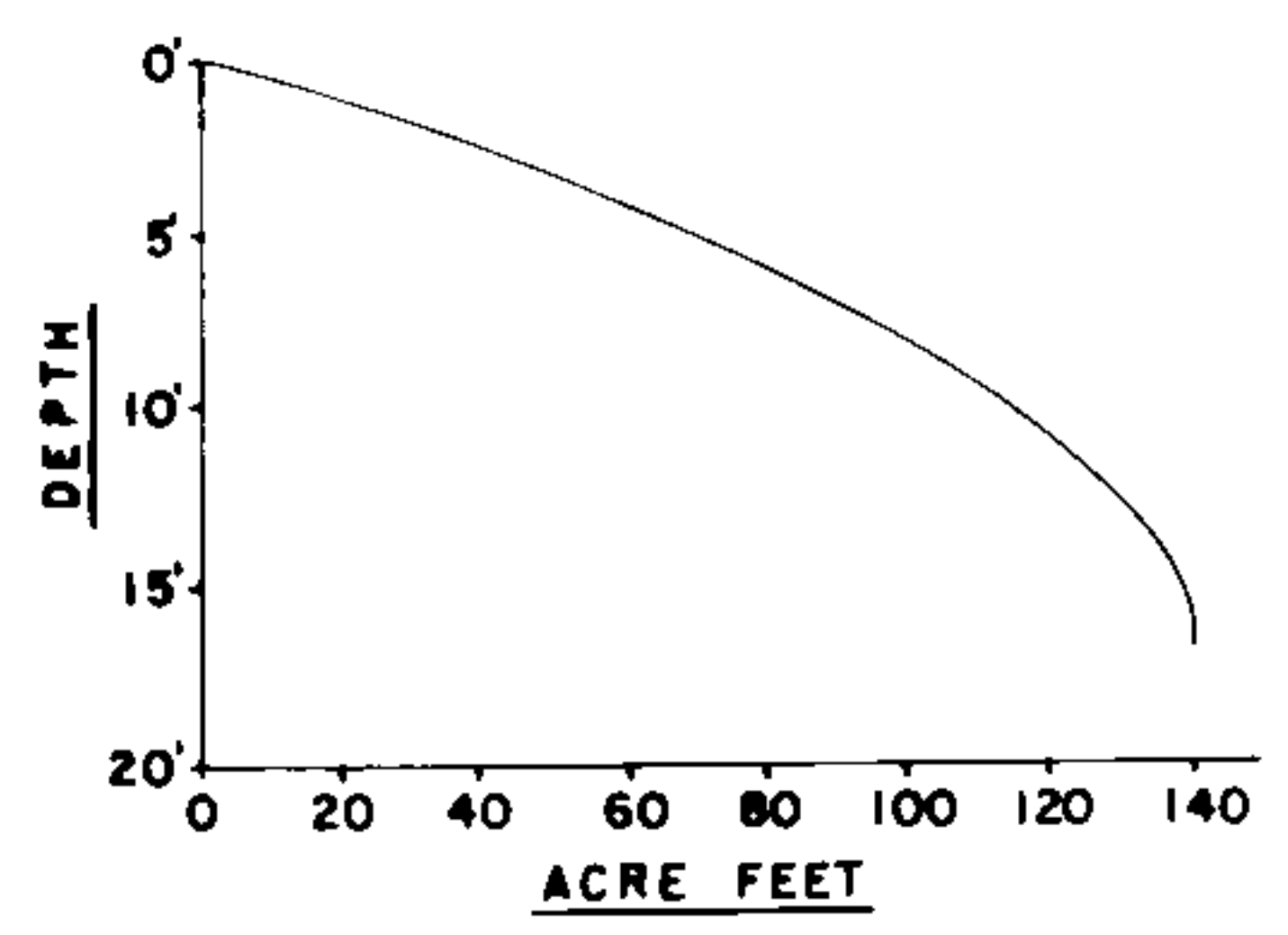
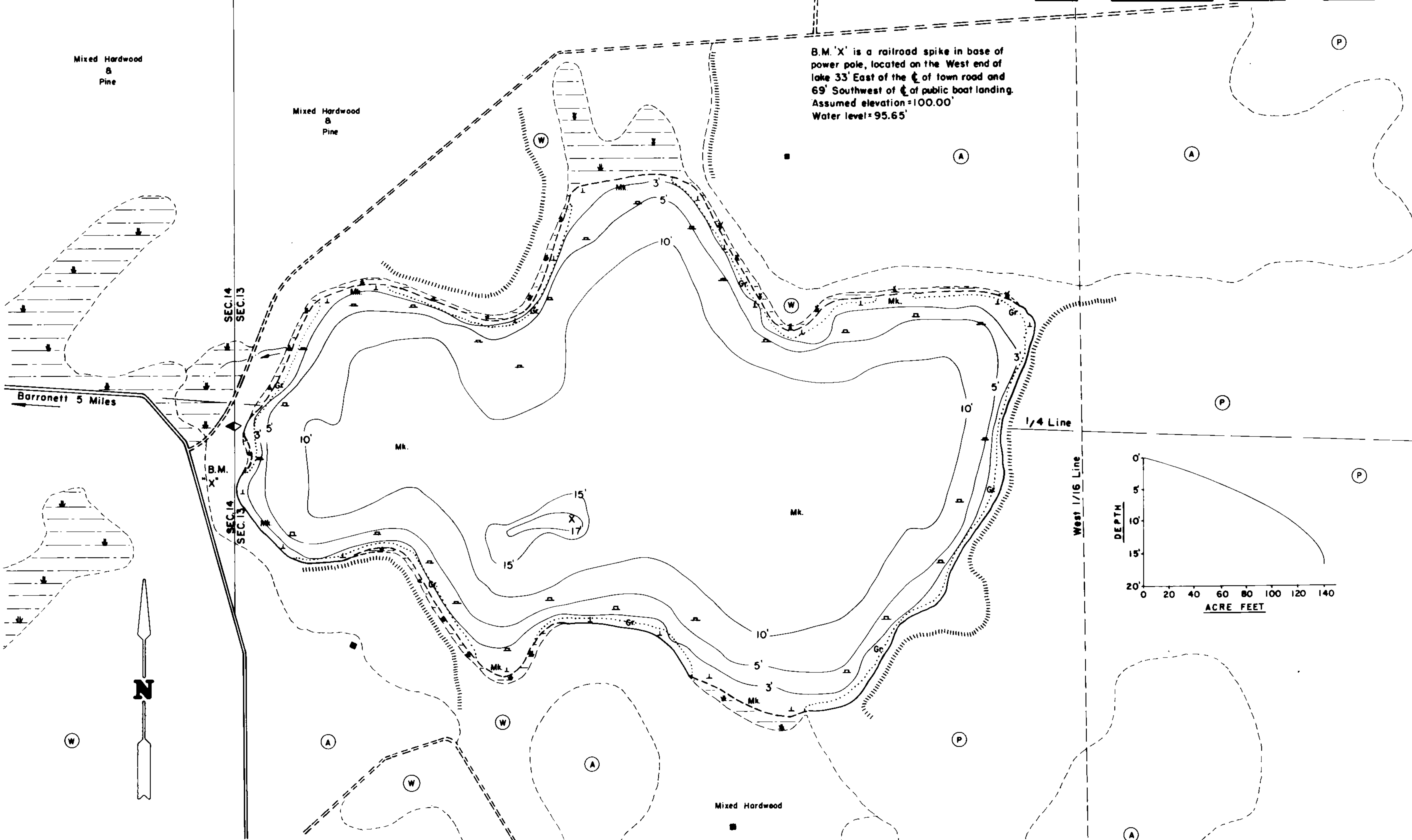


B.M. 'X' is a railroad spike in base of power pole, located on the West end of lake 33' East of the center of town road and 69' Southwest of center of public boat landing. Assumed elevation=100.00' Water level=95.65'



EQUIPMENT RECORDING SONAR MAPPED AUGUST 1976
MONTH YEAR

- TOPOGRAPHIC SYMBOLS**
- (B) Brush
 - (PW) Partially wooded
 - (W) Wooded
 - (C) Cleared
 - (P) Pastured
 - (A) Agricultural
 - B.M. Bench Mark
 - Dwelling
 - Resort
 - Camp

- LAKE BOTTOM SYMBOLS**
- P. Peat
 - Mk. Muck
 - C. Clay
 - M. Marl
 - Sd. Sand
 - St. Silt
 - Gr. Gravel
 - R. Rubble
 - Bc. Bedrock
 - B Boulders
 - ⊙ Stumps & Snags
 - ⊙ Rock danger to navigation
 - T Submergent vegetation
 - ⊥ Emergent vegetation
 - ⊥ Floating vegetation
 - ⊥ Brush shelters



Access Access with Parking Boat Livery
Drawn by: G. Thuesen
Field work by: C.D. Busch, K.D. Cable, L.M. Sather

SPECIES OF FISH	Abundance		
	Abundant	Common	Present
Muskie			
N. Pike			X
Walleye			
L.M. Bass		X	
S.M. Bass			
Panfish	X		
Trout			

WATER AREA 14.2 ACRES
 UNDER 3 FT. 7 %
 OVER 20 FT. 0 %
 MAX. DEPTH 17 FEET.
 TOTAL ALK. 18 P.P.M.
 VOLUME 140.9 ACRE FT.
 MAIN SHORELINE .70 MI.
 ISLAND SHORELINE 0 MI.

Source: Wisconsin Department of Natural Resources 608-266-2621
Anderson Lake – Barron County, Wisconsin DNR Lake Map
Date – Aug 1976 - Historical Lake Map - Not for Navigation
A Public Document - Please Identify the Source when using it.