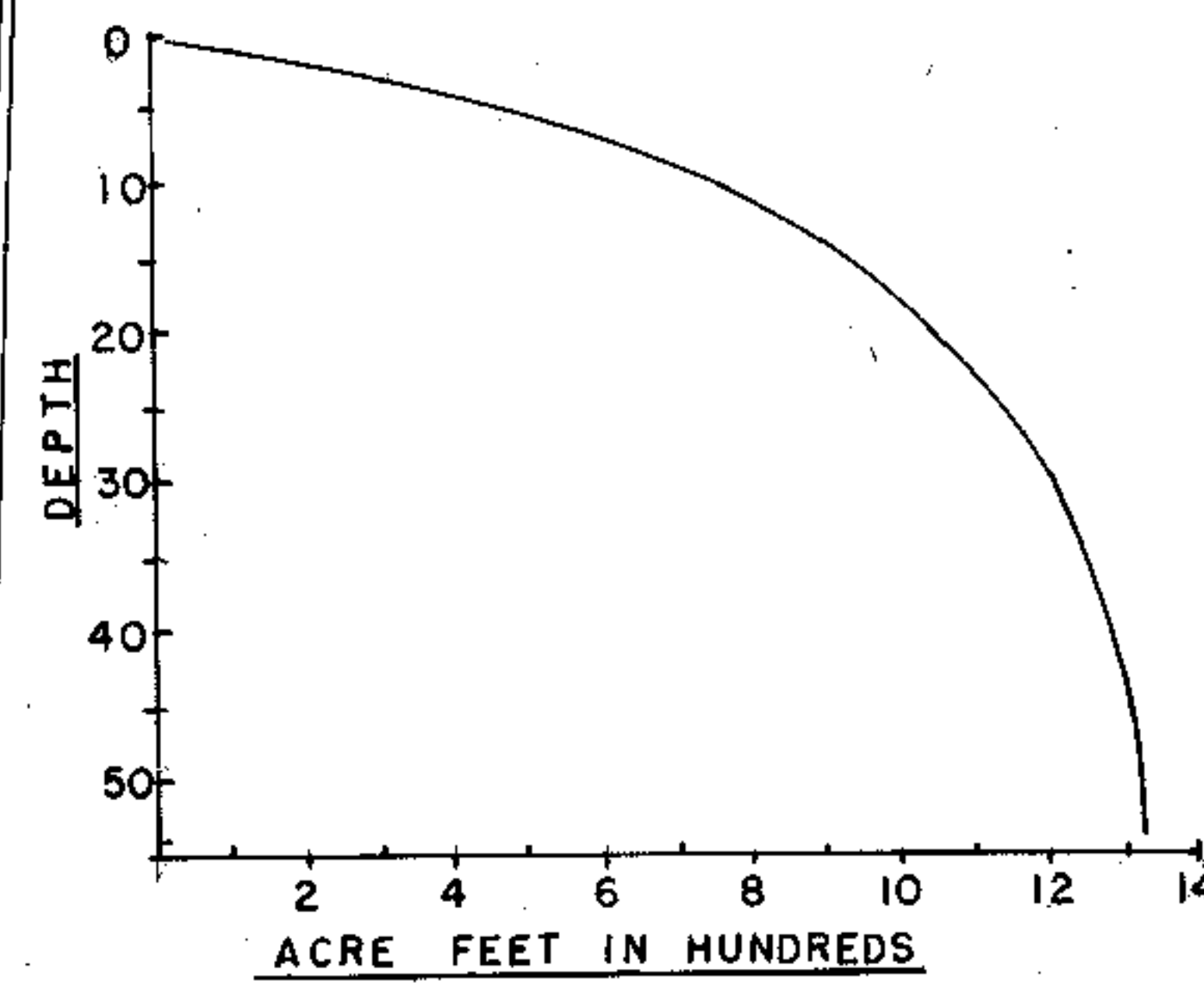
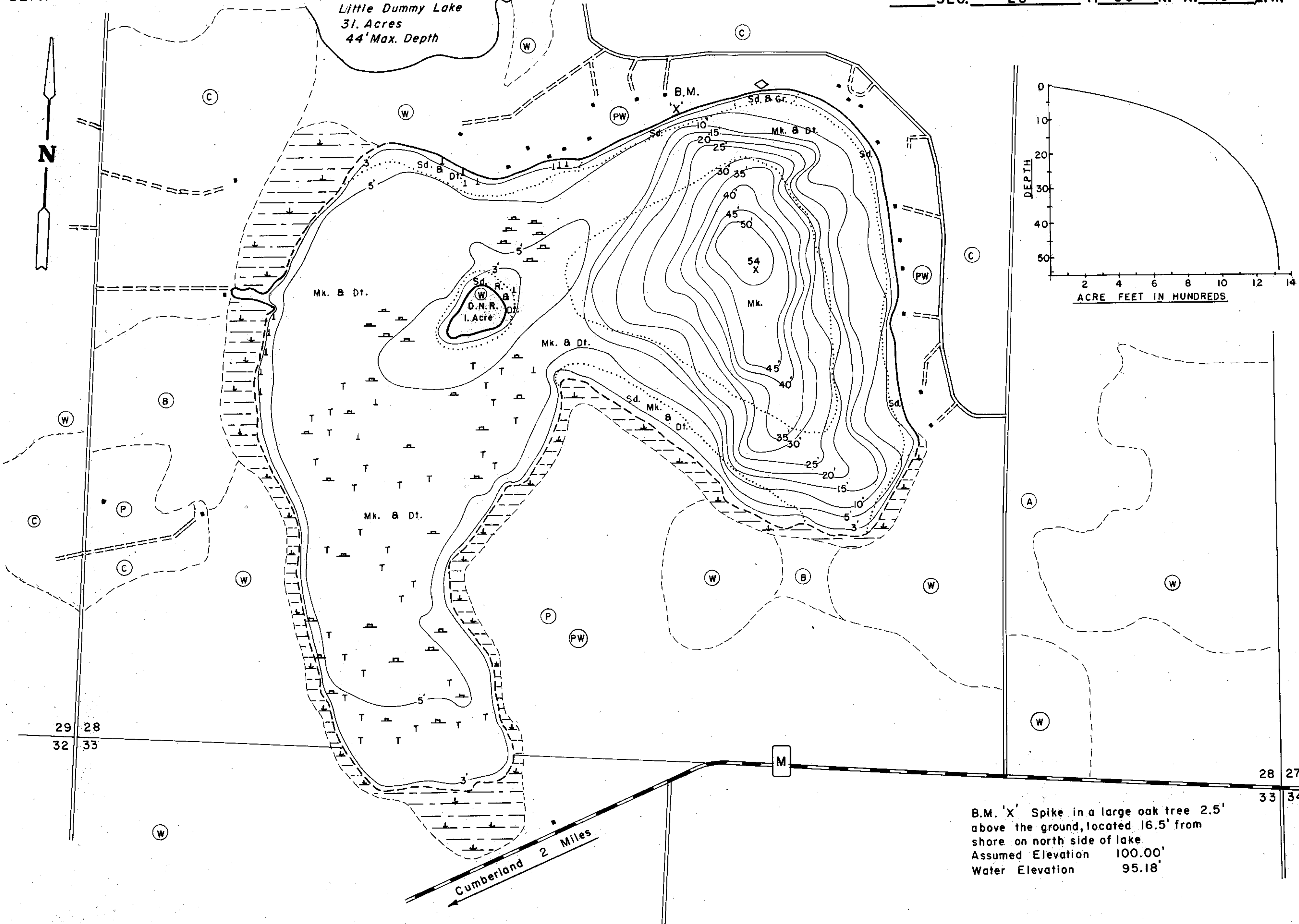


Little Dummy Lake
31. Acres
44' Max. Depth



B.M. 'X' Spike in a large oak tree 2.5'
above the ground, located 16.5' from
shore on north side of lake
Assumed Elevation 100.00'
Water Elevation 95.18'

EQUIPMENT SONAR & POLE MAPPED JULY 1972

- TOPOGRAPHIC SYMBOLS
- (B) Brush
 - (PW) Partially wooded
 - (W) Wooded
 - (C) Cleared
 - (P) Pastured
 - (A) Agricultural
 - B.M. Bench Mark
 - Dwelling
 - Resort
 - ⊠ Camp
 - ||||| Steep slope
 - - - Indefinite shoreline
 - Marsh
 - Spring
 - Intermittent stream
 - Permanent inlet
 - Permanent outlet
 - Dam
 - D.N.R. State owned land

- LAKE BOTTOM SYMBOLS
- P. Peat
 - Mk. Muck
 - C. Clay
 - M. Marl
 - Sd. Sand
 - Sf. Silt
 - Gr. Gravel
 - R. Rubble
 - Bc. Bedrock
 - B Boulders
 - Stumps & Snags
 - Rock danger to navigation
 - T Submergent vegetation
 - Emergent vegetation
 - Floating vegetation
 - Brush shelters
 - Dt Detritus



Access Access with Parking Boat Livery
 Drawn by: E. Eaton
 Field work by: M. Clark

SPECIES OF FISH	ABUNDANCE		
	Abundant	Common	Present
Muskie			
N. Pike		X	
Walleye			X
L.M. Bass			X
S.M. Bass			
Panfish	X		
Trout			

WATER AREA 110.7 ACRES
 UNDER 3 FT. 6 %
 OVER 20 FT. 20 %
 MAX. DEPTH 54 FEET.
 TOTAL ALK. 6 P.P.M.
 VOLUME 1,322 ACRE FT.
 SHORELINE 2.17 MILES
 WITH ISLAND 2.23 MILES

Source: Wisconsin Department of Natural Resources 608-266-2621
Big Dummy Lake – Barron County, Wisconsin DNR Lake Map
Date – Jul 1972 - Historical Lake Map - Not for Navigation
A Public Document - Please Identify the Source when using it.