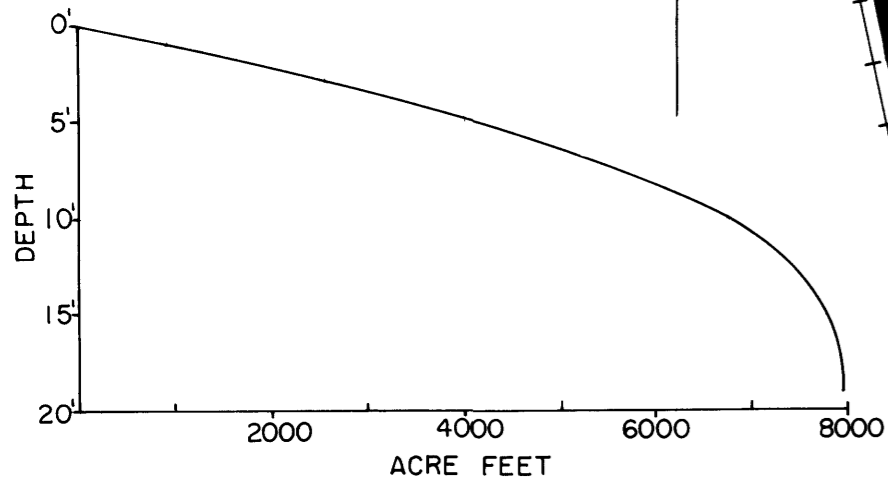


# LAKE SURVEY MAP



EQUIPMENT RECORDING SONAR MAPPED MONTH YEAR SHEET 1 SHEET 2

- TOPOGRAPHIC SYMBOLS**
- (B) Brush
  - (PW) Partially wooded
  - (W) Wooded
  - (C) Cleared
  - (P) Pastured
  - (A) Agricultural
  - B.M. Bench Mark
  - Dwelling
  - Resort
  - ⊠ Camp
  - ||||| Steep slope
  - - - Indefinite shoreline
  - Marsh
  - Spring
  - Intermittent stream
  - Permanent inlet
  - Permanent outlet
  - Dam
  - D.N.R. State owned land

- LAKE BOTTOM SYMBOLS**
- P. Peat
  - Mk. Muck
  - C. Clay
  - M. Marl
  - Sd. Sand
  - St. Silt
  - Gr. Gravel
  - R. Rubble
  - Br. Bedrock
  - B Boulders
  - Stumps & Snags
  - Rock danger to navigation
  - T Submergent vegetation
  - Emergent vegetation
  - Floating vegetation
  - Brush shelters



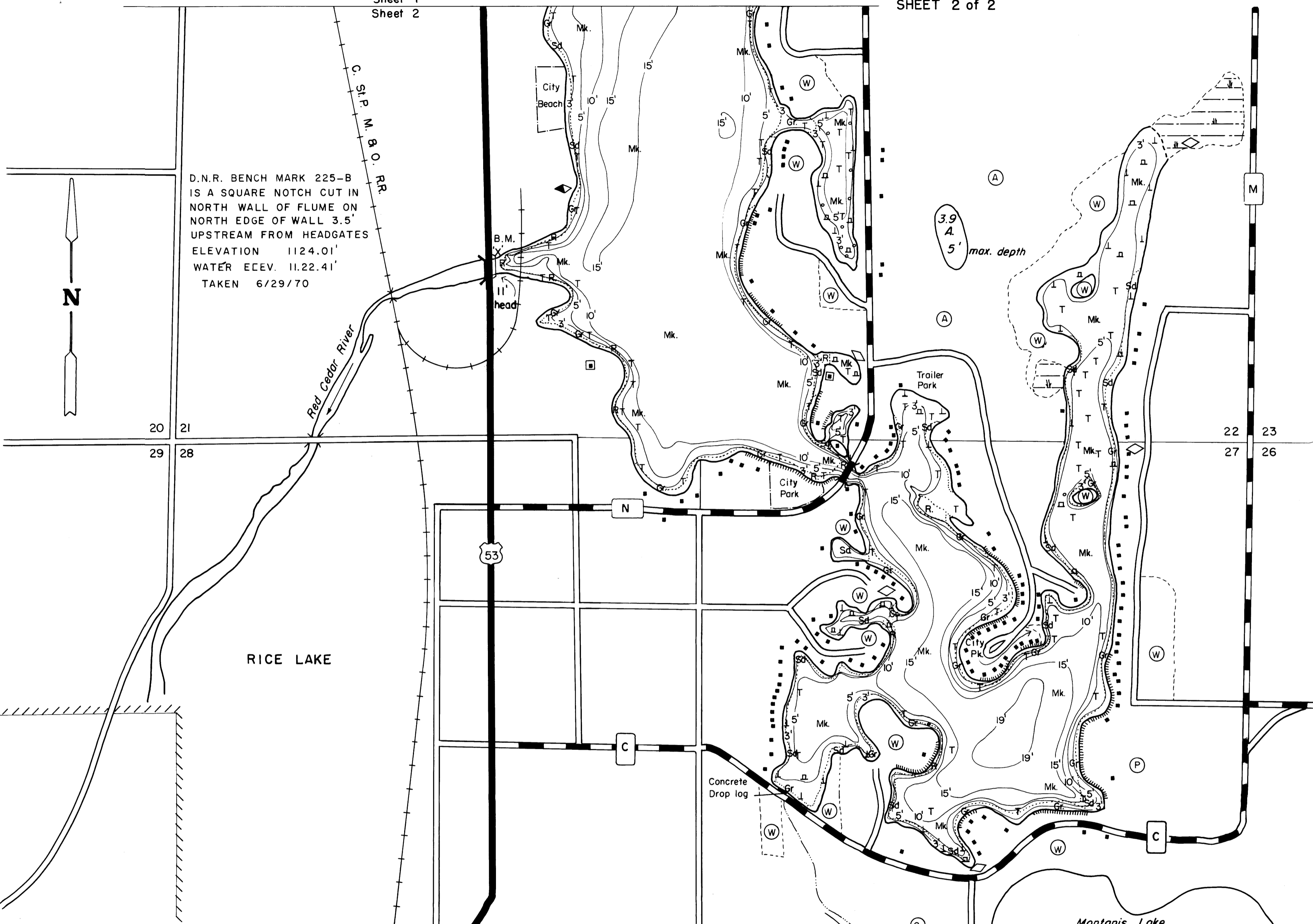
Access Access with Parking Boat Livery  
 Drawn by: C. Holt  
 Field work by: C. Busch, C. Stork, L. Sather

SPECIES OF FISH	Abundance		
	Abundant	Common	Present
Muskie			
N. Pike	X		
Walleye			X
L.M. Bass	X		
S.M. Bass			X
Panfish	X		
Trout			

WATER AREA 938.7 ACRES  
 UNDER 3 FT. 16 %  
 OVER 20 FT. 0 %  
 MAX. DEPTH 19 FEET.  
 TOTAL ALK. 75 P.P.M.  
 VOLUME 7952.6 ACRE FT.  
 SHORELINE 18.53 MILES  
 SHORELINE, 19.56 MILES WITH IS.

Sheet 1  
Sheet 2

D.N.R. BENCH MARK 225-B  
IS A SQUARE NOTCH CUT IN  
NORTH WALL OF FLUME ON  
NORTH EDGE OF WALL 3.5'  
UPSTREAM FROM HEADGATES  
ELEVATION 1124.01'  
WATER ELEV. 1122.41'  
TAKEN 6/29/70



EQUIPMENT RECORDING SONAR MAPPED JULY 1970  
MONTH YEAR

- TOPOGRAPHIC SYMBOLS
- (B) Brush
  - (PW) Partially wooded
  - (W) Wooded
  - (C) Cleared
  - (P) Pastured
  - (A) Agricultural
  - B.M. Bench Mark
  - Dwelling
  - Resort
  - Camp
- LAKE BOTTOM SYMBOLS
- P. Peat
  - Mk. Muck
  - C. Clay
  - M. Marl
  - Sd. Sand
  - St. Silt
  - Gr. Gravel
  - R. Rubble
  - Br. Bedrock
  - B Boulders
  - ⊙ Stumps & Snags
  - ⊙ Rock danger to navigation
  - T Submergent vegetation
  - ⊥ Emergent vegetation
  - ⊥ Floating vegetation
  - ⊥ Brush shelters
- TOPOGRAPHIC SYMBOLS (continued):
- ||||| Steep slope
  - Indefinite shoreline
  - Marsh
  - Spring
  - Intermittent stream
  - Permanent inlet
  - Permanent outlet
  - Dam
  - D.N.R. State owned land



Access Access with Parking Boat Livery

Drawn by: C. Holt  
Field work by: C. Busch, C. Stocks, L. Sother

SPECIES OF FISH	Abundance		
	Abundant	Common	Present
Muskie			
N. Pike	X		
Walleye		X	
L. M. Bass	X		
S. M. Bass			X
Panfish	X		
Trout			

Montanis Lake  
200.2 Acres  
14 Ft. Deep  
WATER AREA 938.7 ACRES  
UNDER 3 FT. 16 %  
OVER 20 FT. 0 %  
MAX. DEPTH 19 FEET.  
TOTAL ALK. 75 P.P.M.  
VOLUME 7952.6 ACRE FT.  
SHORELINE 18.53 MILES  
SHORELINE, 19.56 MILES WITH IS.

Source: Wisconsin Department of Natural Resources 608-266-2621  
Rice Lake – Barron County, Wisconsin DNR Lake Map  
Date – Jul 1970 - Historical Lake Map - Not for Navigation  
A Public Document - Please Identify the Source when using it.