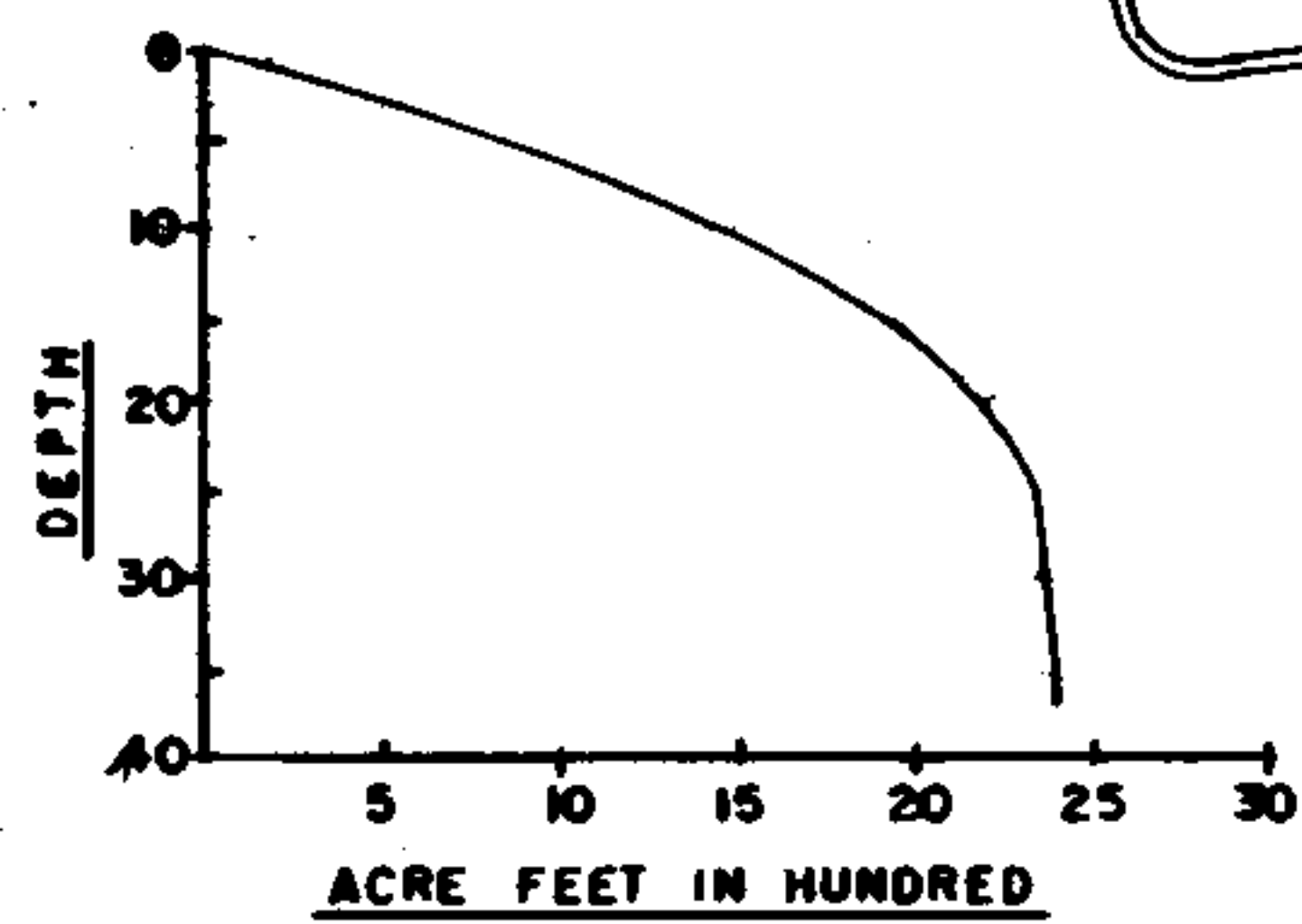
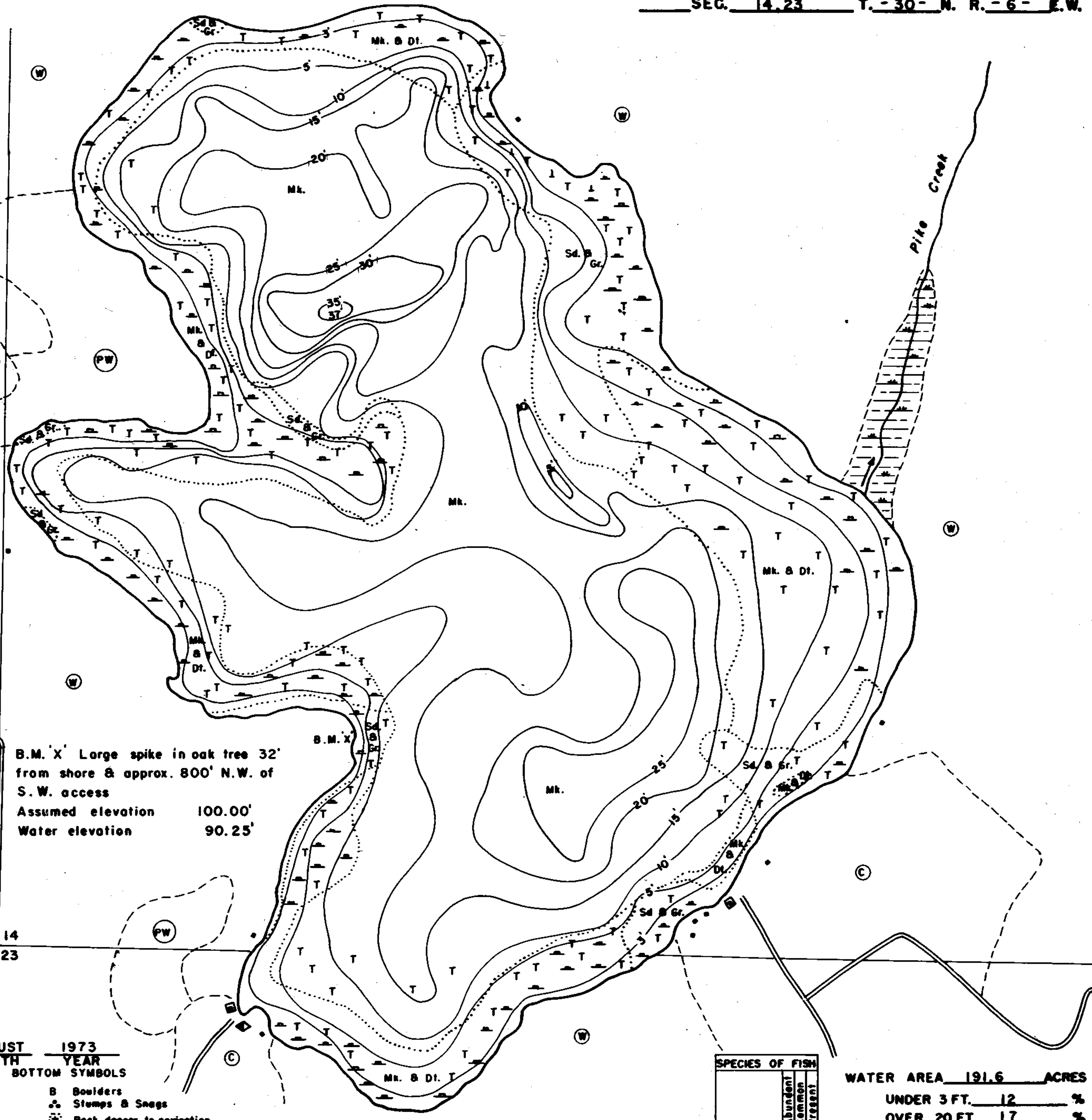
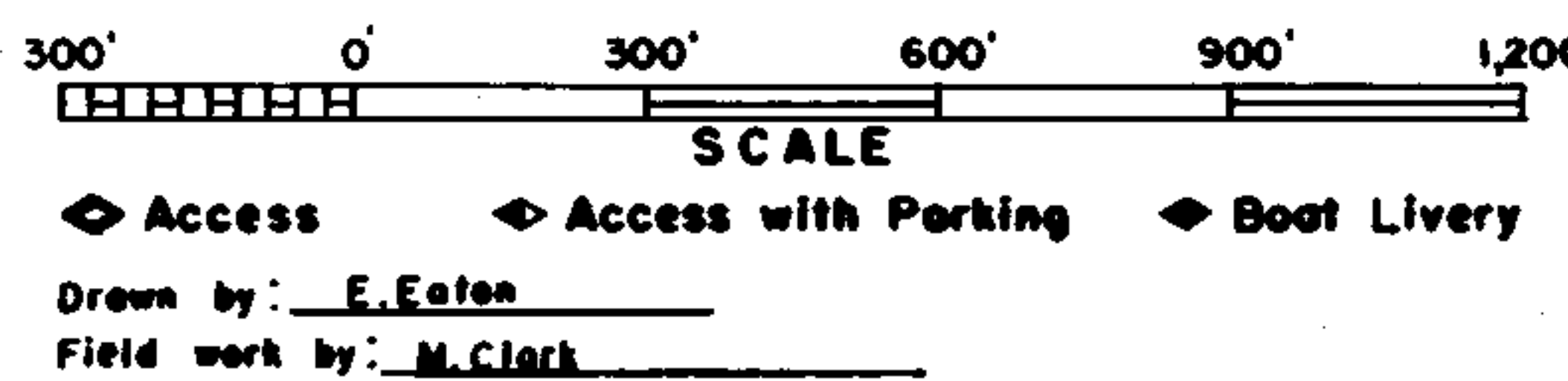


LAKE SURVEY MAP



Cornell 10 Miles

- EQUIPMENT SONAR & POLE MAPPED AUGUST 1973
- | TOPOGRAPHIC SYMBOLS | | LAKE BOTTOM SYMBOLS | |
|---------------------|---------------------------|---------------------|-----------------------------|
| ● Brush | Steep slope | P. Peat | B Boulders |
| ● Partially shaded | ~ Indefinite shoreline | Mk. Muck | ⊙ Stumps & Snags |
| ● Shaded | ⊙ Marsh | C. Clay | ⊙ Rock danger to navigation |
| ● Clear | ⊙ Spring | M. Marl | T Submergent vegetation |
| ● Faded | ~ Intermittent stream | Sd. Sand | I Emergent vegetation |
| ● Rippled | ~ Permanent inlet | Sl. Silt | ⊙ Floating vegetation |
| ● Dotted | ~ Permanent outlet | Gr. Gravel | ⊙ Brush shelters |
| ● Dashed | ~ Dam | R. Rubble | Dt. Detritus |
| ● Dotted | ⊙ U.S.S. State owned land | Bc Bedrock | |
| ● Dotted | | | |



SPECIES OF FISH	ABUNDANCE		
	Abundant	Common	Present
Muskie			
N. Pike		X	
Walleye			
L. M. Bass		X	
S. M. Bass			
Perch	X		
Trout			

WATER AREA 191.6 ACRES
 UNDER 3 FT. 12 %
 OVER 20 FT. 17 %
 MAX. DEPTH 37 FEET.
 TOTAL ALK. 24 P.P.M.
 VOLUME 2,368.9 ACRE FT.
 SHORELINE 2.68 MILES

Source: Wisconsin Department of Natural Resources 608-266-2621
Pike Lake – Chippewa County, Wisconsin DNR Lake Map
Date – Aug 1973 - Historical Lake Map - Not for Navigation
A Public Document - Please Identify the Source when using it.