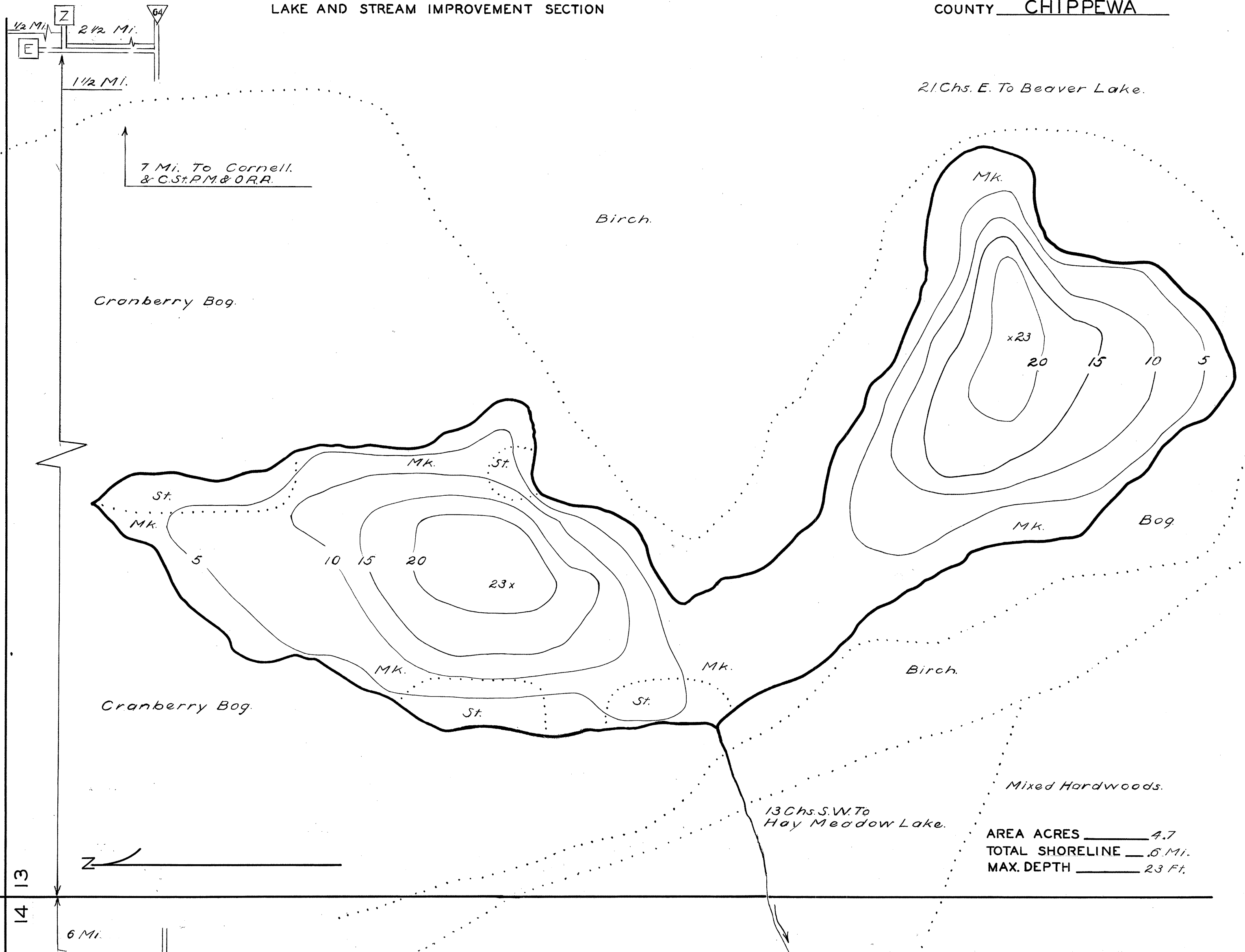


LAKE SURVEY MAP

WISCONSIN CONSERVATION DEPARTMENT
BIOLOGY DIVISION
LAKE AND STREAM IMPROVEMENT SECTION

LAKE BARR
SECTION 13
TOWNSHIP 31 N
RANGE 8 W
TOWN OF CLEVELAND
COUNTY CHIPPEWA

FORM FI-117



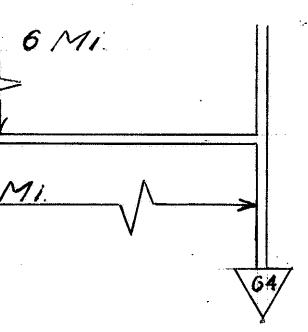
7 Mi. To Cornell.
& C.S.P.M. & O.R.R.

2 1/2 Chs. E. To Beaver Lake.

13 Chs. S.W. To
Hay Meadow Lake.

AREA ACRES 4.7
TOTAL SHORELINE .6 Mi.
MAX. DEPTH 23 Ft.

11 12
14 13



DATE May 1, 1941.
COMPILED BY _____
TRACED BY N.L.M. (W.P.A.)
SOURCE OF INFORMATION _____
W.P.A. Lake Survey Project
SOUNDINGS At 66 Ft. Intervals.
DATES OF MAP REVISION _____
WORK AGENCY W. P. A.

LAKE IMPROVEMENT RECORD			
TYPE	DATE		
BRUSH REFUGES			
SAPLING TANGLES			
SPAWNING BOXES			
MINNOW SPAWNERS			
TOTAL			

SCALE 1 inch Equals 82 1/2 Ft.

- LEGEND**
- WEED BEDS
 - ROCKY SHOALS
 - SAND
 - CLAY
 - GRAVEL
 - MUCK
 - DWELLING
 - ABANDONED DWELLING
 - RESORT
 - SILT

CHECKED BY
W.P.S. - C.E.K.
5-5-41

Source: Wisconsin Department of Natural Resources 608-266-2621
Barr Lake – Chippewa County, Wisconsin DNR Lake Map
Date – May 1941 - Historical Lake Map - Not for Navigation
A Public Document - Please Identify the Source when using it.