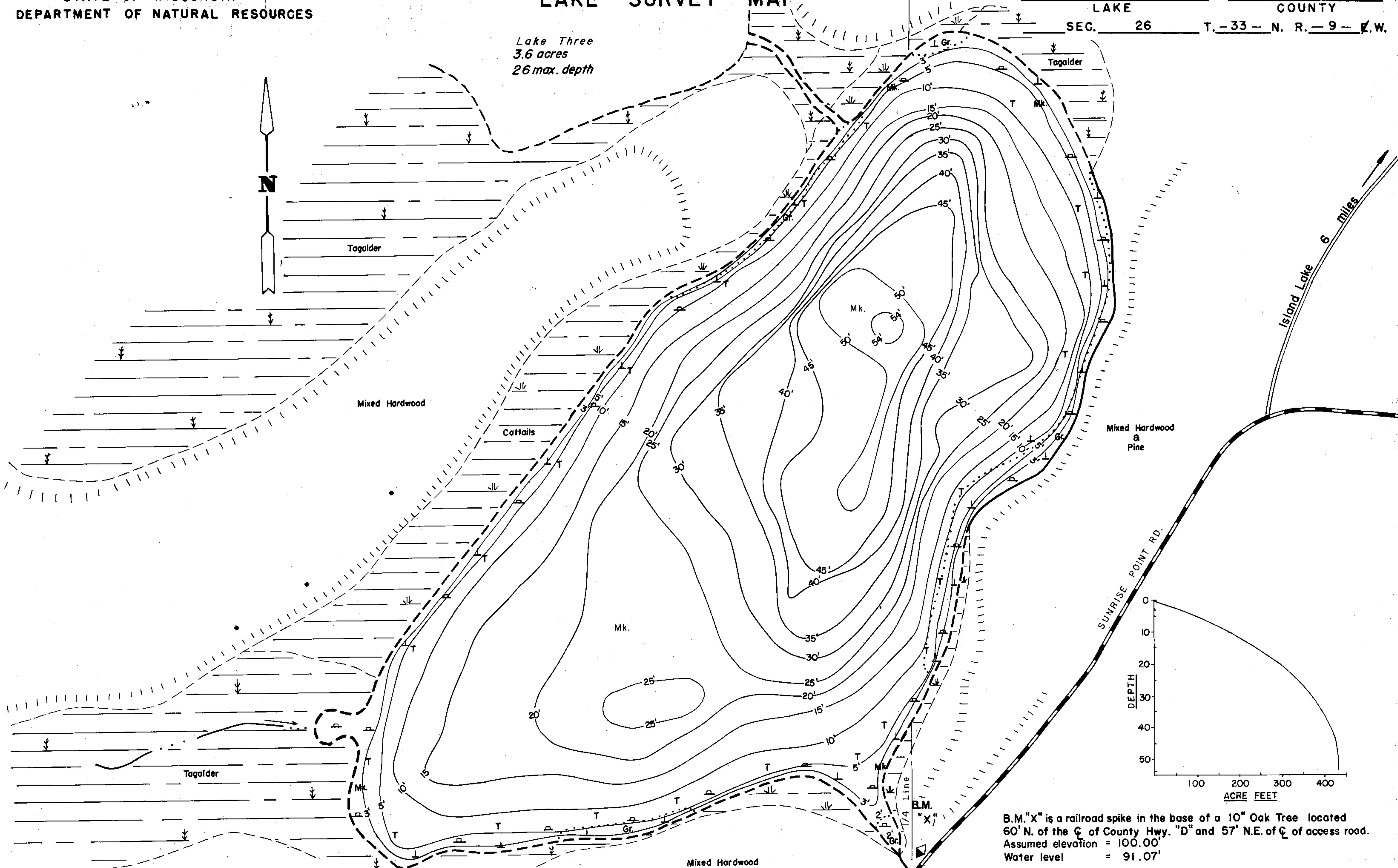


Lake Three
3.6 acres
26 max. depth



EQUIPMENT RECORDING SONAR	MAPPED	MONTH	YEAR
TOPOGRAPHIC SYMBOLS		JUNE	1977
(B) Brush		LAKE	SYMBOLS
(PW) Partially wooded	- - - - -		
(W) Wooded			
(C) Cleared			
(P) Pastured			
(A) Agricultural			
B.M. Bench Mark	▲		
■ Dwelling	■		
□ Resort	□		
⊠ Camp	⊠		
Steep slope			
- - - - - Indefinite shoreline			
Marsh			
Spring			
Intermittent stream			
Permanent inlet			
Permanent outlet			
Dam			
D.N.R. State owned land			
P. Peat			
Mk. Muck			
C. Clay			
M. Marl			
Sd. Sand			
St. Silt			
Gr. Gravel			
R. Rubble			
Br. Bedrock			
B Boulders			
o Stumps & Snags			
⊙ Rock danger to navigation			
T Submergent vegetation			
⊥ Emergent vegetation			
⊔ Floating vegetation			
⊕ Brush shelters			

B.M. "X" is a railroad spike in the base of a 10" Oak Tree located 60' N. of the C of County Hwy. "D" and 57' N.E. of C of access road. Assumed elevation = 100.00' Water level = 91.07'

SPECIES OF FISH	Abundance		
	Abundant	Common	Present
Muskie			
N. Pike			
Walleye			
L.M. Bass			X
S.M. Bass			
Panfish	X		
Trout			

WATER AREA	20.5	ACRES
UNDER 3 FT.	11	%
OVER 20 FT.	47	%
MAX. DEPTH	54	FEET.
TOTAL ALK.	32	P.P.M.
VOLUME	432.1	ACRE FT.
MAIN SHORELINE	.75	MI.
ISLAND SHORELINE	0	MI.

100' 0' 100' 200' 300' 400'
SCALE
◆ Access ◆ Access with Parking ◆ Boat Livery
Drawn by: R. Williams
Field work by: C. Busch, K. Cable, L. Sather

Source: Wisconsin Department of Natural Resources 608-266-2621
Four Lake – Rusk County, Wisconsin DNR Lake Map
Date – Jun 1977 - Historical Lake Map - Not for Navigation
A Public Document - Please Identify the Source when using it.