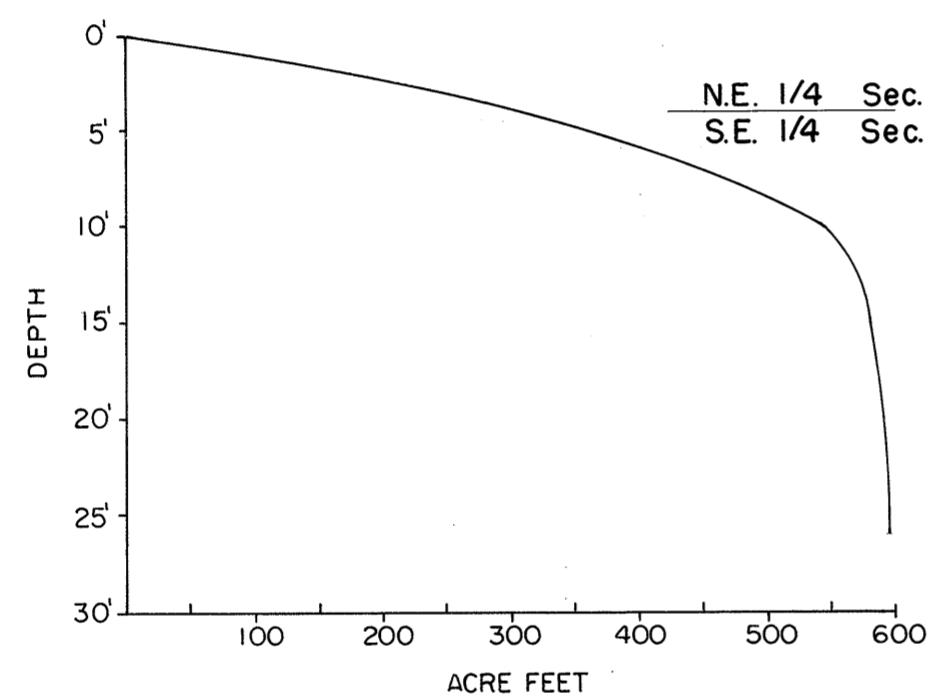
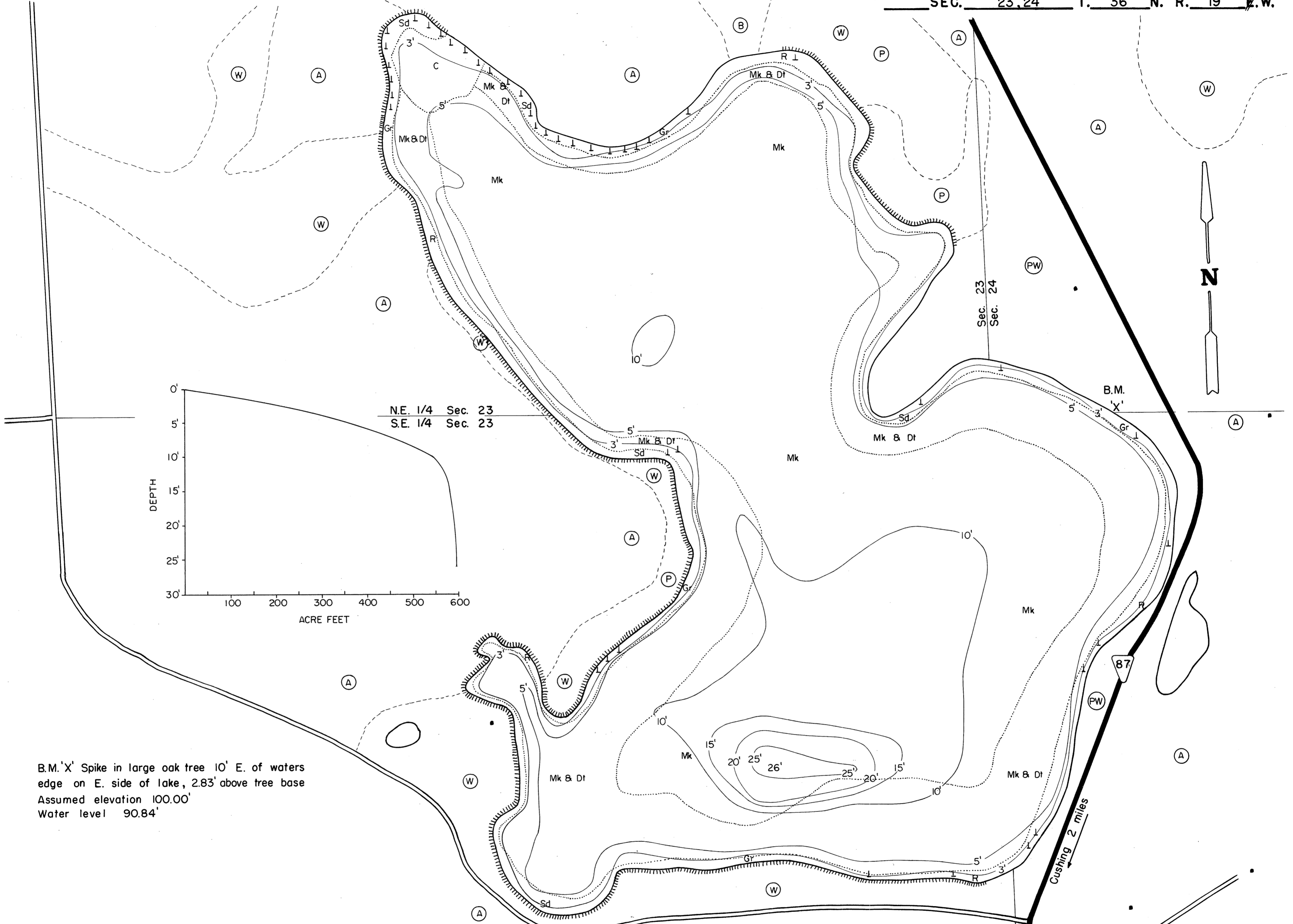


# LAKE SURVEY MAP

STERLING (BASS) LAKE  
POLK COUNTY  
SEC. 23, 24 T. 36 N. R. 19 E.W.



B.M. 'X' Spike in large oak tree 10' E. of waters edge on E. side of lake, 2.83' above tree base  
Assumed elevation 100.00'  
Water level 90.84'

EQUIPMENT RECORDING SONAR MAPPED JULY 1972  
MONTH YEAR

- TOPOGRAPHIC SYMBOLS**
- (B) Brush
  - (PW) Partially wooded
  - (W) Wooded
  - (C) Cleared
  - (P) Pastured
  - (A) Agricultural
  - B.M. Bench Mark
  - Dwelling
  - ▣ Resort
  - Camp
  - ||||| Steep slope
  - - - Indefinite shoreline
  - Marsh
  - Spring
  - Intermittent stream
  - Permanent inlet
  - Permanent outlet
  - Dam
  - D.N.R. State owned land

- LAKE BOTTOM SYMBOLS**
- P. Peat
  - Mk. Muck
  - C. Clay
  - M. Marl
  - Sd. Sand
  - St. Silt
  - Gr. Gravel
  - R. Rubble
  - Br. Bedrock
  - B Boulders
  - Stumps & Snags
  - Rock danger to navigation
  - T Submergent vegetation
  - Emergent vegetation
  - Floating vegetation
  - Brush shelters



◆ Access    ◆ Access with Parking    ◆ Boat Livery

Drawn by: C. Holt  
Field work by: M. Clark

SPECIES OF FISH	Abundant Common Present		
	Abundant	Common	Present
Muskie			
N. Pike			X
Walleye			X
L.M. Bass	X		
S.M. Bass			
Panfish	X		
Trout			

WATER AREA 779 ACRES  
UNDER 3 FT. 9 %  
OVER 20 FT. 2 %  
MAX. DEPTH 26 FEET.  
TOTAL ALK. 57 P.P.M.  
VOLUME 595 ACRE FT.  
SHORELINE 2.03 MILES

Source: Wisconsin Department of Natural Resources 608-266-2621  
Sterling Lake (Bass Lake)– Polk County, Wisconsin DNR Lake Map  
Date – Jul 1972 - Historical Lake Map - Not for Navigation  
A Public Document - Please Identify the Source when using it.