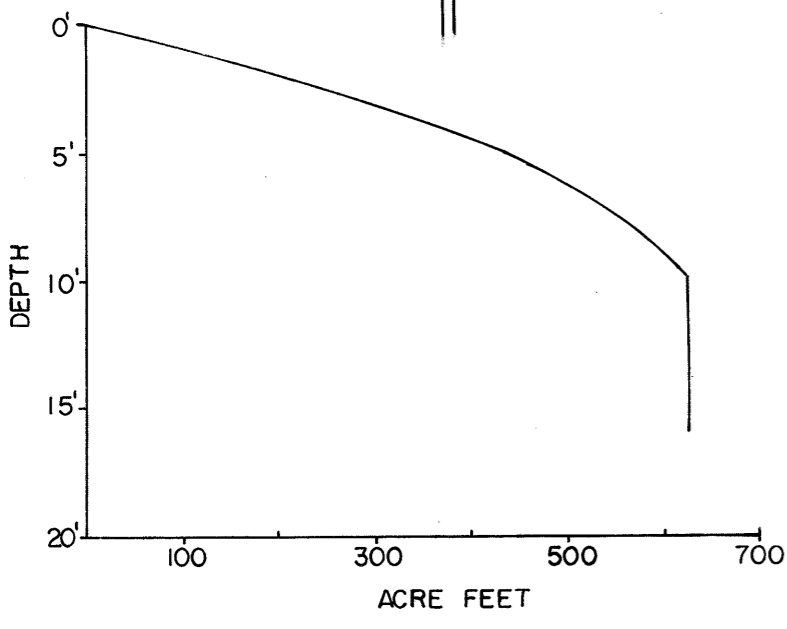


LAKE SURVEY MAP

**Peterson**  
BIG LAKE  
SEC. 31, 36 T. 40 N. R. 15, 16 W.  
BURNETT COUNTY

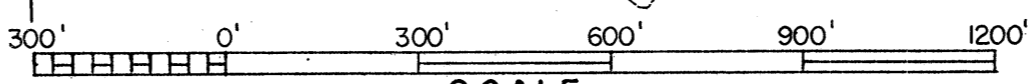


Webster 4 miles

B.M. 'X' Brass cap set in concrete post, 22' W. of lake, 45' E. of C.T.H. 'T', 35' from rough boat landing, No. 1592-A  
Assumed elevation 100.00'  
Water level 94.18'

EQUIPMENT RECORDING SONAR MAPPED MAY 1969

- | TOPOGRAPHIC SYMBOLS   |                            | LAKE BOTTOM SYMBOLS |                             |
|-----------------------|----------------------------|---------------------|-----------------------------|
| (B) Brush             | Steep slope                | P. Peat             | B Boulders                  |
| (PW) Partially wooded | - - - Indefinite shoreline | Mk. Muck            | o Stumps & Snags            |
| (W) Wooded            | Marsh                      | C. Clay             | ⊗ Rock danger to navigation |
| (C) Cleared           | o Spring                   | M. Marl             | T Submergent vegetation     |
| (P) Pastured          | --- Intermittent stream    | Sd. Sand            | ⊥ Emergent vegetation       |
| (A) Agricultural      | == Permanent inlet         | St. Silt            | ⊏ Floating vegetation       |
| B.M. Bench Mark       | == Permanent outlet        | Gr. Gravel          | ⊕ Brush shelters            |
| ■ Dwelling            | ⊏ Dam                      | R. Rubble           |                             |
| ■ Resort              | D.N.R. State owned land    | Br. Bedrock         |                             |
| □ Camp                |                            |                     |                             |

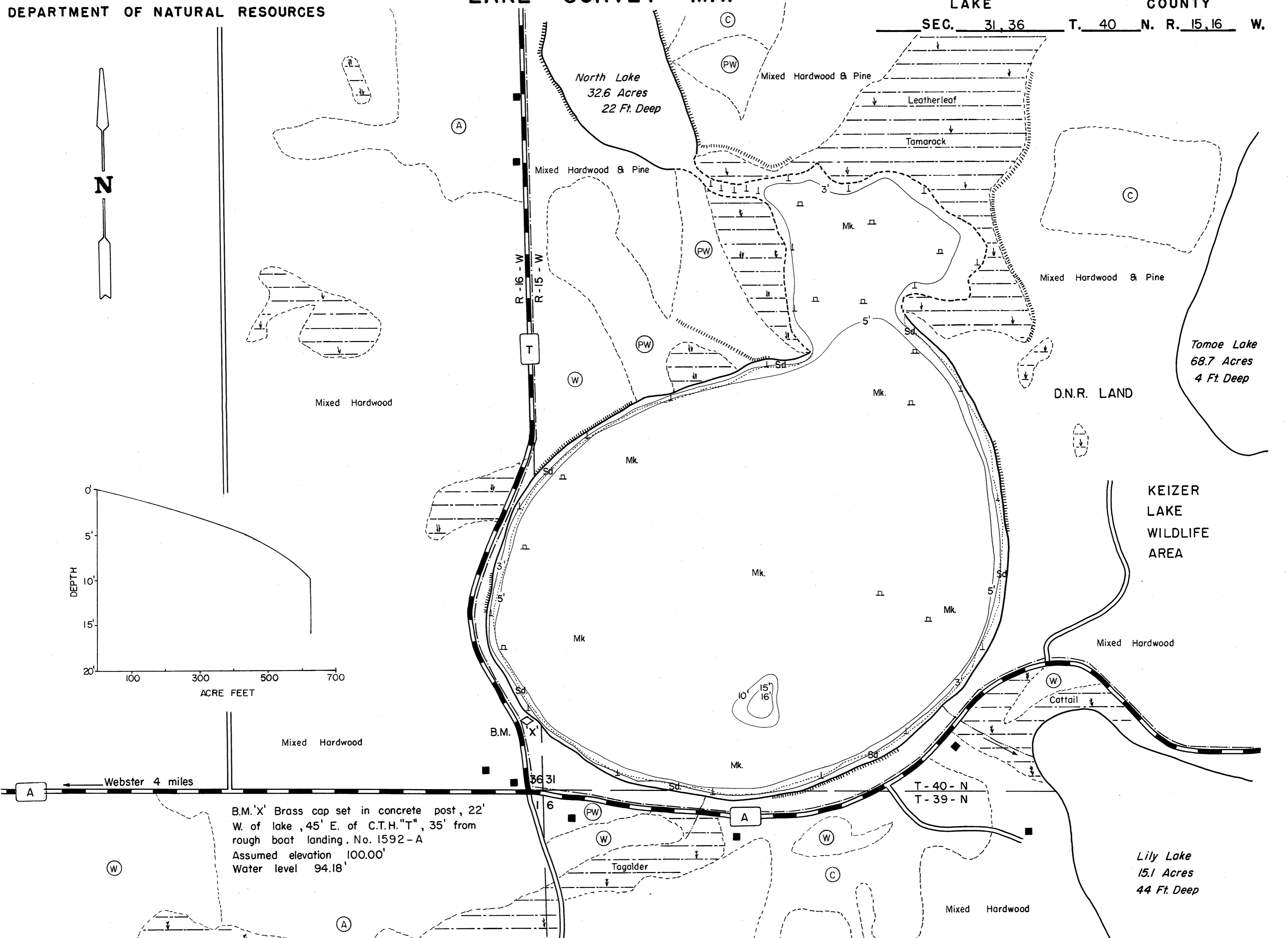


Access Access with Parking Boat Livery

Drawn by: C. Holt  
Field work by: C. Busch, C. Belter, S. Johannes

SPECIES OF FISH	WATER AREA		
	Abundant	Common	Present
Muskie			
N. Pike		X	
Walleye			
L.M. Bass			X
S.M. Bass			
Panfish	X		
Trout			

WATER AREA 94.1 ACRES  
UNDER 3 FT. 6.8 %  
OVER 20 FT. 0 %  
MAX. DEPTH 16 FEET.  
TOTAL ALK. 12 P.P.M.  
VOLUME 625.6 ACRE FT.  
SHORELINE 1.70 MILES



Source: Wisconsin Department of Natural Resources 608-266-2621  
Big Peterson Lake – Burnett County, Wisconsin DNR Lake Map  
Date – May 1969 - Historical Lake Map - Not for Navigation  
A Public Document - Please Identify the Source when using it.