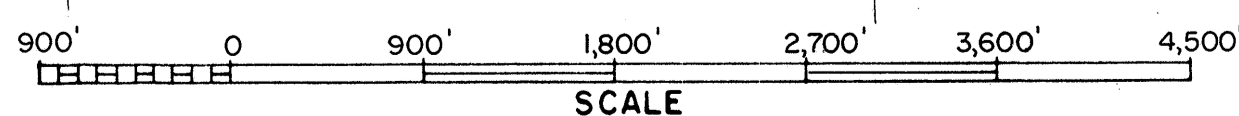


Department of Natural Resources Bench Mark.
Bronze tablet stamped Public Service Commission
set in north wingwall of dam.
Elevation 1019.39'
Water elevation 1014.30'

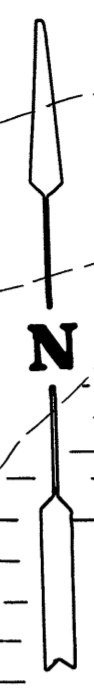
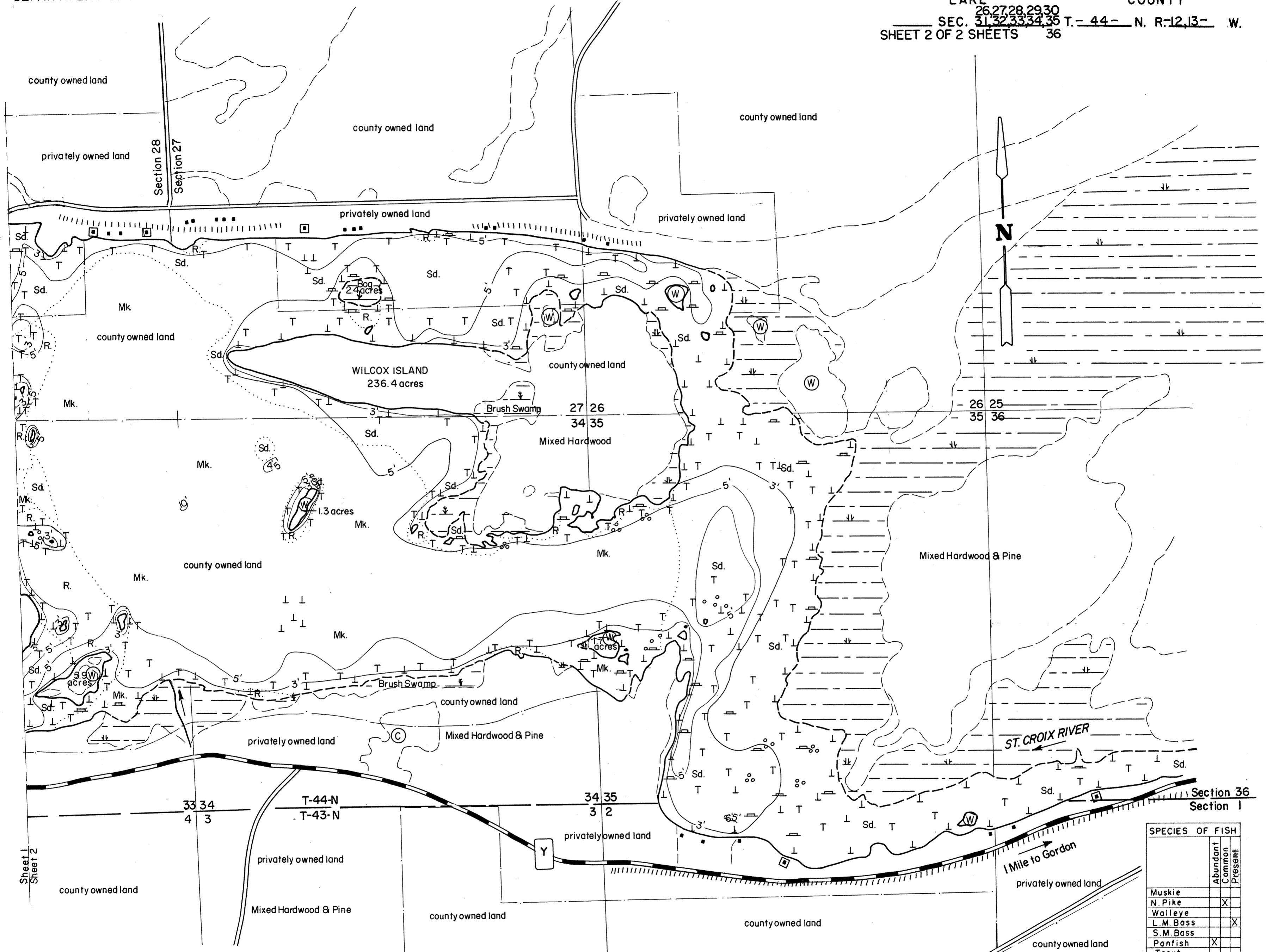
SPECIES OF FISH			
	Abundant	Common	Present
Muskie			
N. Pike		X	
Walleye			
L. M. Bass			X
S. M. Bass			
Panfish	X		
Trout			

2,525.1 ACRES INCLUDING ISLANDS
AREA 1,912.7 ACRES
UNDER 3 FT. 6 %
OVER 20 FT. 0.1 %
VOLUME 12,553.6 ACRE FT.
TOTAL ALK. 50 P.P.M.
SHORELINE 29.1 MILES
MAX. DEPTH 28 FEET
20.8 MILES OF SHORELINE
EXCLUDING ISLANDS

- EQUIPMENT RECORDING SONAR MAPPED APRIL 1967
MO. YR.
- TOPOGRAPHIC SYMBOLS
- (B) Brush
 - (PW) Partially wooded
 - (W) Wooded
 - (C) Cleared
 - (P) Pastured
 - (A) Agricultural
 - B.M. Bench Mark
 - Dwelling
 - Resort
 - ||||| Steep slope
 - - - Indefinite shoreline
 - ||||| Marsh
 - Spring
 - - - Intermittent stream
 - ==== Permanent inlet
 - ==== Permanent outlet
 - ⌋ Dam
- LAKE BOTTOM SYMBOLS
- P. Peat
 - Mk. Muck
 - C. Clay
 - M. Marl
 - Sd. Sand
 - St. Silt
 - Gr. Gravel
 - R. Rubble
 - Br. Bedrock
 - ⊙ Stumps & Snags
 - T Submergent vegetation
 - ⌋ Emergent vegetation
 - ⊢ Floating vegetation
- WATER ELEV. 1014.30'



◇ Access ◈ Access with Parking ◆ Boat Livery
Field work by: L.Sather, C.Busch, R.Husel Drawn by: J.Roth

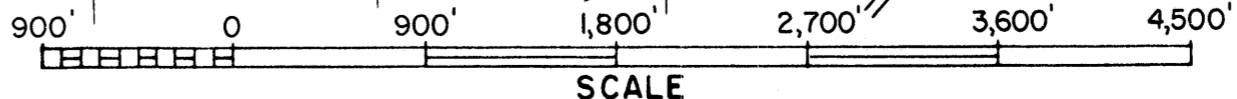


SPECIES OF FISH		
	Abundant	Present
Muskie		
N. Pike	X	
Walleye		
L.M. Bass		X
S.M. Bass		
Panfish	X	
Trout		

EQUIPMENT RECORDING SONAR MAPPED APRIL 1967
MO. YR.

- TOPOGRAPHIC SYMBOLS
- (B) Brush
 - (PW) Partially wooded
 - (W) Wooded
 - (C) Cleared
 - (P) Pastured
 - (A) Agricultural
 - B.M. Bench Mark
 - Dwelling
 - Resort

- LAKE BOTTOM SYMBOLS
- P. Peat
 - Mk. Muck
 - C. Clay
 - M. Marl
 - Sd. Sand
 - St. Silt
 - Gr. Gravel
 - R. Rubble
 - Br. Bedrock
 - T Submergent vegetation
 - ↓ Emergent vegetation
 - ≡ Floating vegetation
 - o Stumps & Snags



Access Access with Parking Boat Livery
Field work by: L.Sather, C.Busch, R.Housel. Drawn by: J.Roth

2,525.1 ACRES INCLUDING ISLANDS
AREA 1,912.7 ACRES
UNDER 3 FT. 6 %
OVER 20 FT. 0.1 %
VOLUME 12,553.6 ACRE FT.
TOTAL ALK. 50 P.P.M.
SHORELINE 29.1 MILES
MAX. DEPTH 28 FEET
20.8 MILES OF SHORELINE
EXCLUDING ISLANDS

Source: Wisconsin Department of Natural Resources 608-266-2621
St. Croix (Gordon) Flowage - Douglas County, Wisconsin DNR Lake Map
April 1967 Historical Lake Map - Not for Navigation
A Public Document - Please Identify the Source when using it.