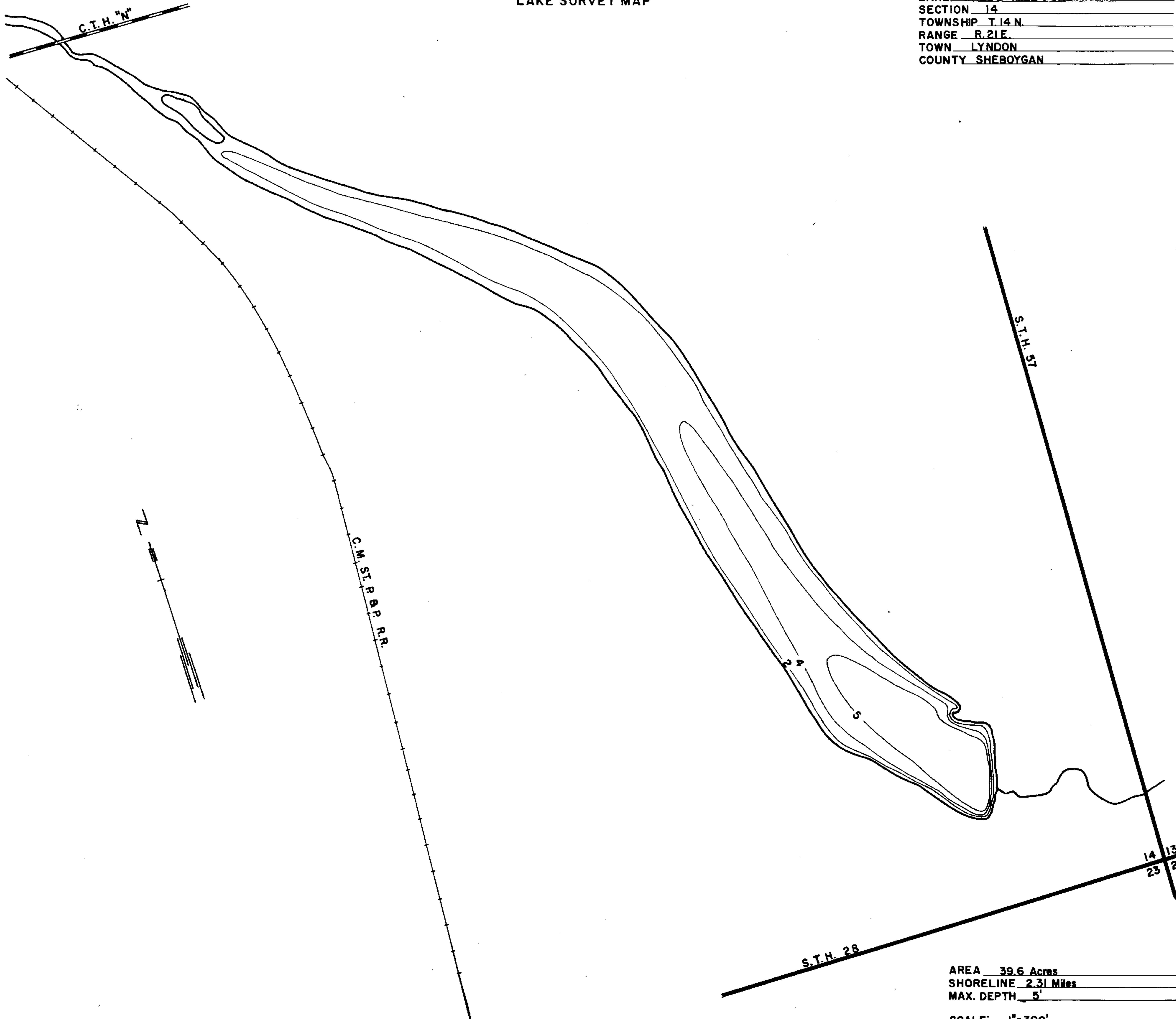


LAKE WALDO MILL POND
 SECTION 14
 TOWNSHIP T. 14 N.
 RANGE R. 21 E.
 TOWN LYNDON
 COUNTY SHEBOYGAN



AREA 39.6 Acres
 SHORELINE 2.31 Miles
 MAX. DEPTH 5'
 SCALE: 1" = 300'

Source: Wisconsin Department of Natural Resources 608-266-2621
Waldo Mill Pond– Sheboygan County, Wisconsin DNR Lake Map
Date – Unknown - Historical Lake Map - Not for Navigation
A Public Document - Please Identify the Source when using it.