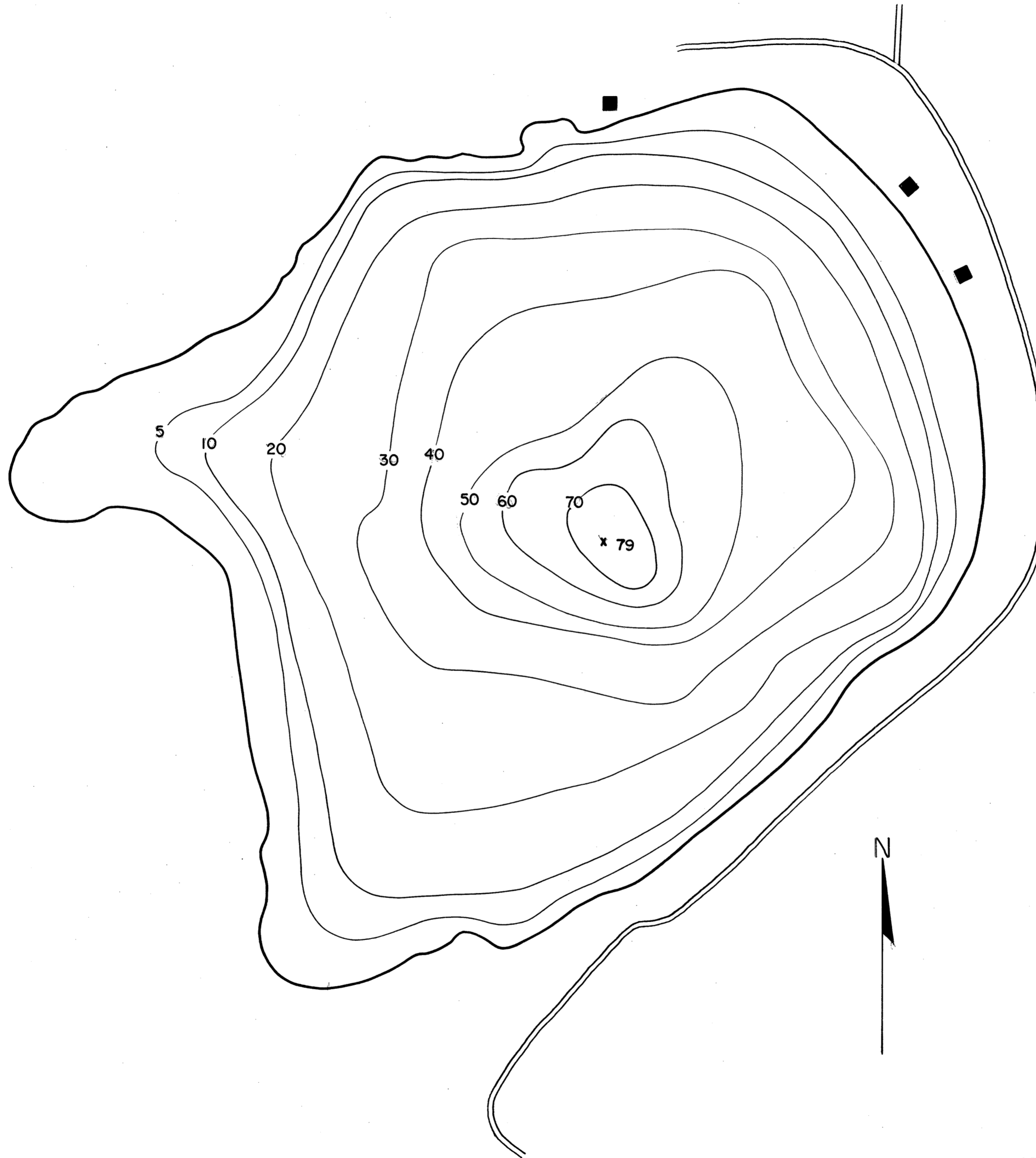


LAKE EMRICK
SECTION 7
TOWNSHIP T. 15. N
RANGE R. 8. E
TOWN OXFORD
COUNTY MARQUETTE



AREA 39 Acres
TOTAL SHORELINE 1 Mile
MAX. DEPTH 79 Feet
SCALE: 32" = 1 Mile

Source: Wisconsin Department of Natural Resources 608-266-2621
Emrick Lake – Marquette County, Wisconsin DNR Lake Map
Date – Unknown - Historical Lake Map - Not for Navigation
A Public Document - Please Identify the Source when using it.