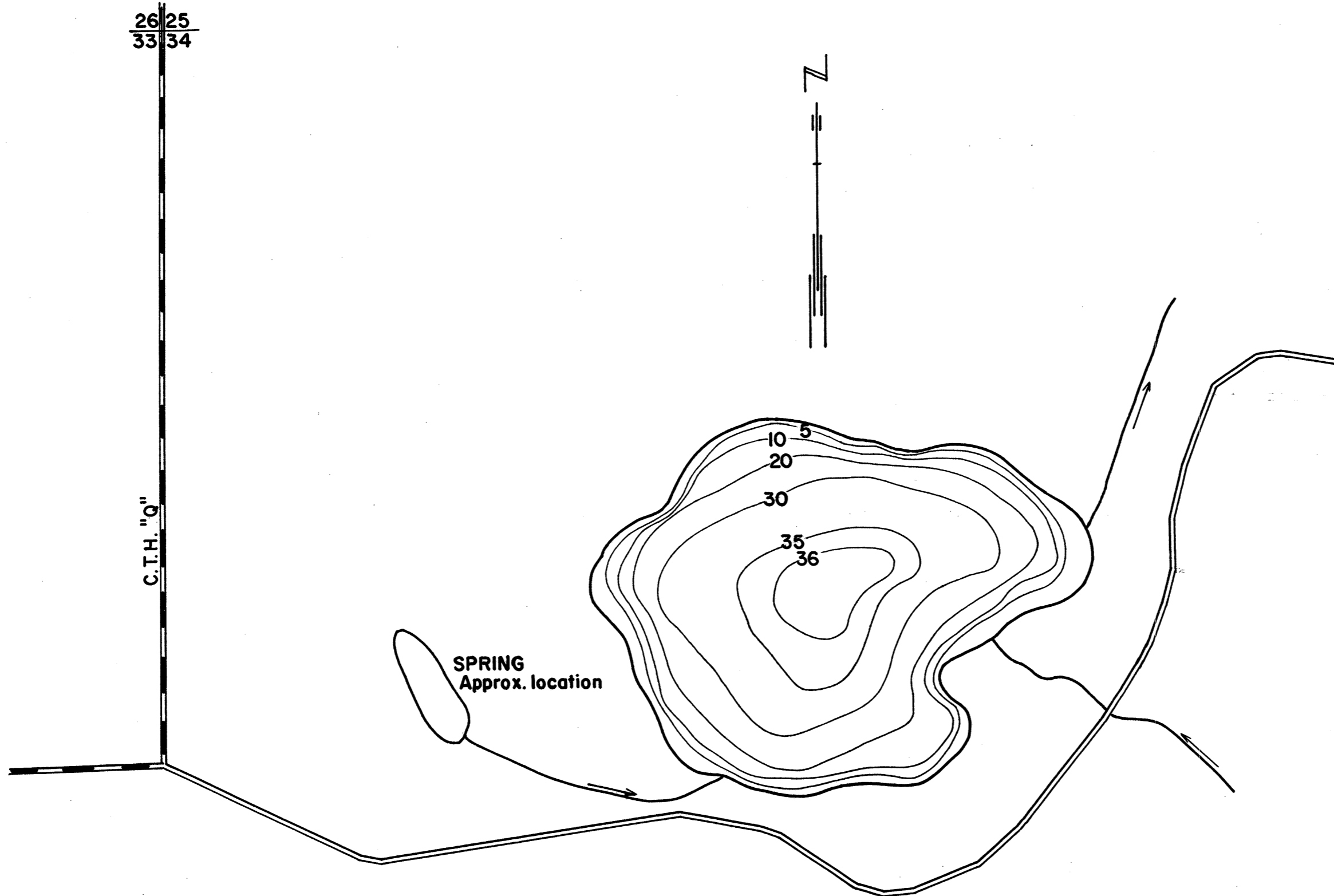


LAKE MEAD
SECTIONS 34
TOWNSHIP T. 23 N.
RANGE R. 11 E.
TOWN SCANDINAVIA
COUNTY WAUPACA



LAKE MAPPED _____
SOURCE OF INFORMATION _____
SOUNDINGS SONAR

AREA 9.74 Acres
TOTAL SHORELINE 0.5 Miles
MAX. DEPTH 36'
SCALE: 1"=200'

Source: Wisconsin Department of Natural Resources 608-266-2621

Mead Lake – Waupaca County, Wisconsin DNR Lake Map

Date – Unknown - Historical Lake Map - Not for Navigation

A Public Document - Please Identify the Source when using it.