

# LAKE SURVEY MAP

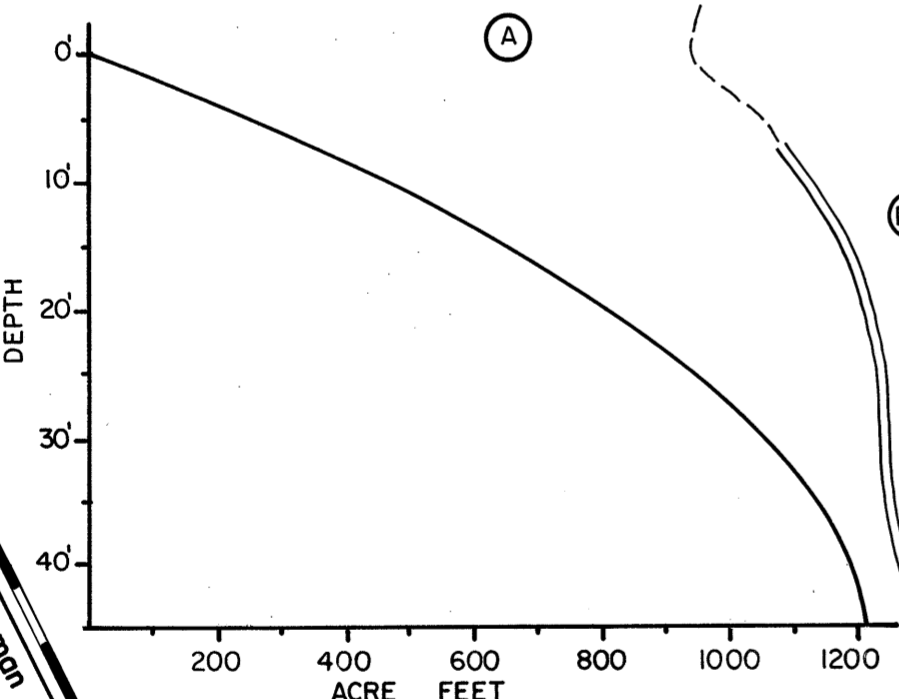
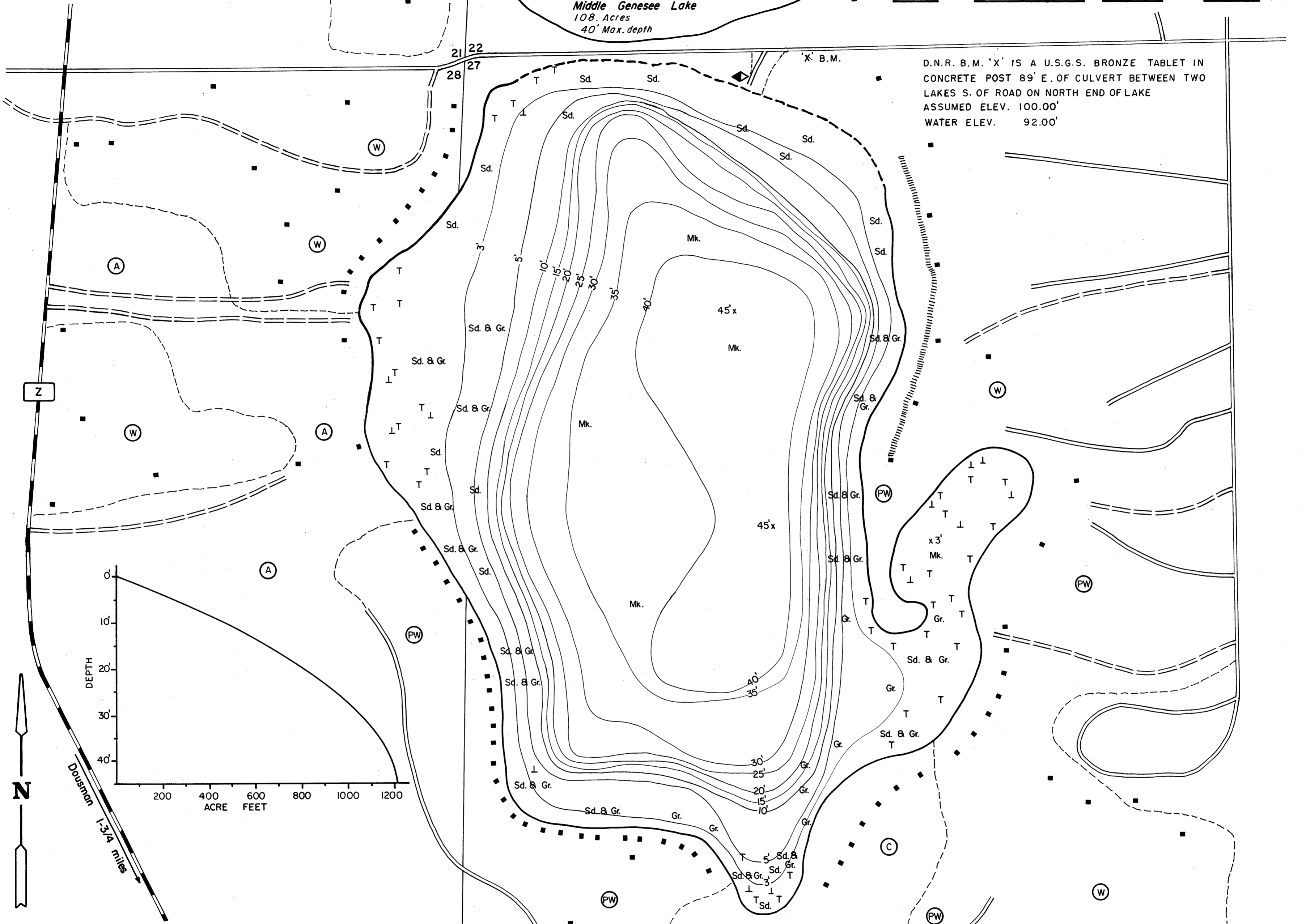
LOWER GENESEE  
LAKE

WAUKESHA  
COUNTY

SEC. 27, 28 T. 7 N. R. 17 E. W.

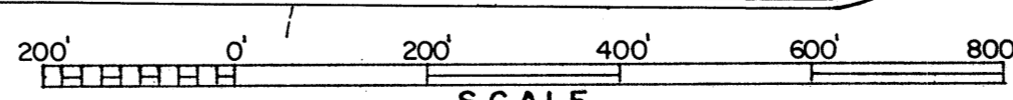
Middle Genesee Lake  
108. Acres  
40' Max. depth

D.N.R. B.M. 'X' IS A U.S.G.S. BRONZE TABLET IN CONCRETE POST 89' E. OF CULVERT BETWEEN TWO LAKES S. OF ROAD ON NORTH END OF LAKE ASSUMED ELEV. 100.00' WATER ELEV. 92.00'



EQUIPMENT RECORDING SONAR MAPPED MAY 1969  
MONTH YEAR  
LAKE BOTTOM SYMBOLS

- |                       |                            |             |                             |
|-----------------------|----------------------------|-------------|-----------------------------|
| TOPOGRAPHIC SYMBOLS   |                            | P. Peat     | B Boulders                  |
| (B) Brush             | Steep slope                | Mk. Muck    | % Stumps & Snags            |
| (PW) Partially wooded | ----- Indefinite shoreline | C. Clay     | ⚡ Rock danger to navigation |
| (W) Wooded            | ⊞ Marsh                    | M. Marl     | T Submergent vegetation     |
| (C) Cleared           | o Spring                   | Sd. Sand    | ⊥ Emergent vegetation       |
| (P) Pastured          | ----- Intermittent stream  | St. Silt    | ⊞ Floating vegetation       |
| (A) Agricultural      | ==== Permanent inlet       | Gr. Gravel  | ⊞ Brush shelters            |
| B.M. Bench Mark       | ==== Permanent outlet      | R. Rubble   |                             |
| ■ Dwelling            | ⊞ Dam                      | Br. Bedrock |                             |
| ■ Resort              | D.N.R. State owned land    |             |                             |
| ⊞ Camp                |                            |             |                             |



◆ Access    ◆ Access with Parking    ◆ Boat Livery  
 Drawn by: R. A. Burnkrant  
 Field work by: J. Ball, C. Hasler

SPECIES OF FISH	Abundance		
	Abundant	Common	Present
Muskie			
N. Pike			X
Walleye			
L. M. Bass	X		
S. M. Bass			
Panfish	X		
Trout	X		

WATER AREA 65.9 ACRES  
 UNDER 3 FT. 25 %  
 OVER 20 FT. 49 %  
 MAX. DEPTH 45 FEET.  
 TOTAL ALK. 162 P.P.M.  
 VOLUME 1210.7 ACRE FT.  
 SHORELINE 1.6 MILES

Source: Wisconsin Department of Natural Resources 608-266-2621  
Lower Genesee Lake – Waukesha County, Wisconsin DNR Lake Map  
Date – May 1969 - Historical Lake Map - Not for Navigation  
A Public Document - Please Identify the Source when using it.