


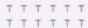

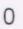


Lake Eau Claire

Eau Claire County, Wisconsin

BATHYMETRIC MAP
with 4-foot depth contours
measured from full pool elevation 828 ft
Lake surveyed Fall, 2007

Legend

-  Boat Launches
-  Beaches
-  Park
-  Submergent Plants
-  Emergent Plants
-  Basin Depths

Public Restrooms at all Boat Launches,
Park, and at the West Beach.

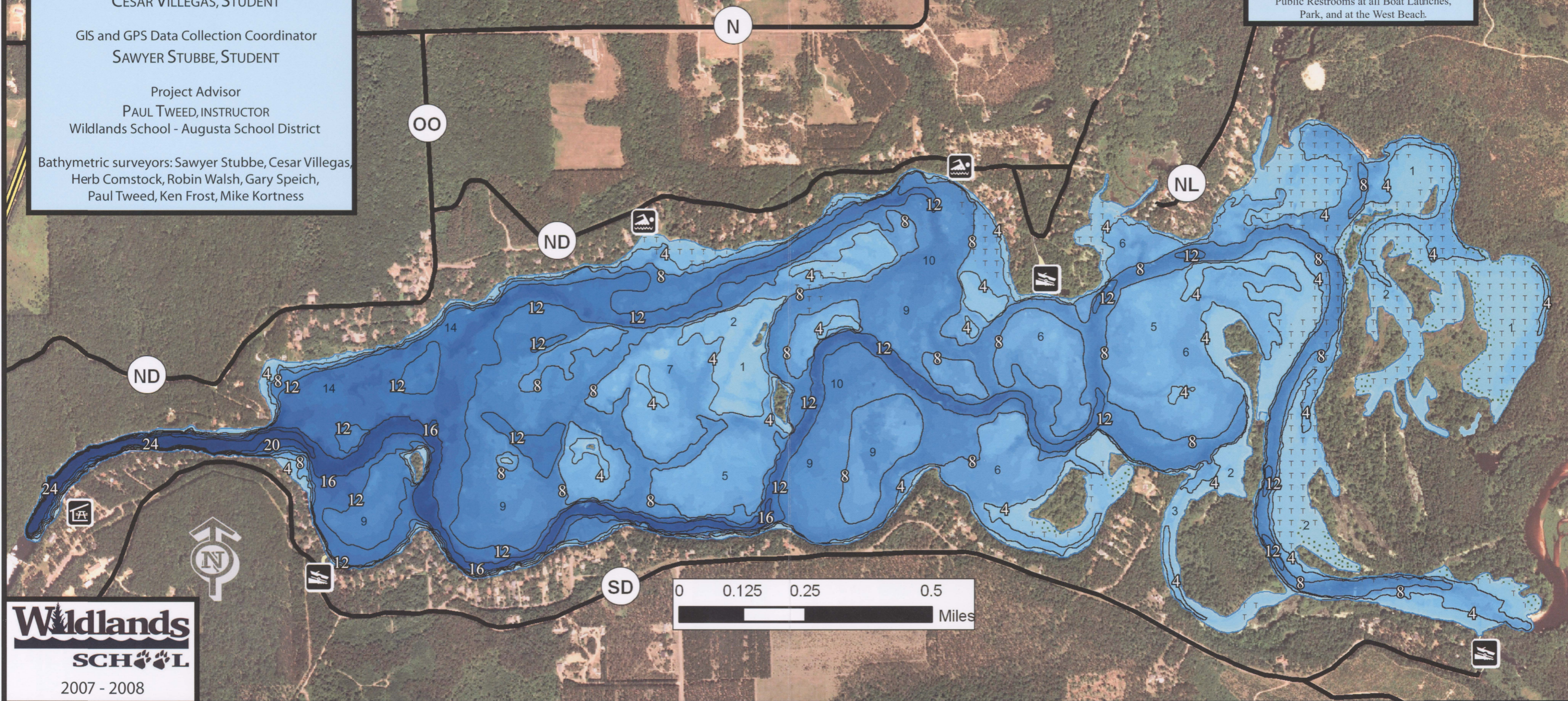
Map funded by a grant from the
Wisconsin Department of Natural Resources

GIS and GPS Bathymetric Map Production by
CESAR VILLEGAS, STUDENT

GIS and GPS Data Collection Coordinator
SAWYER STUBBE, STUDENT

Project Advisor
PAUL TWEED, INSTRUCTOR
Wildlands School - Augusta School District

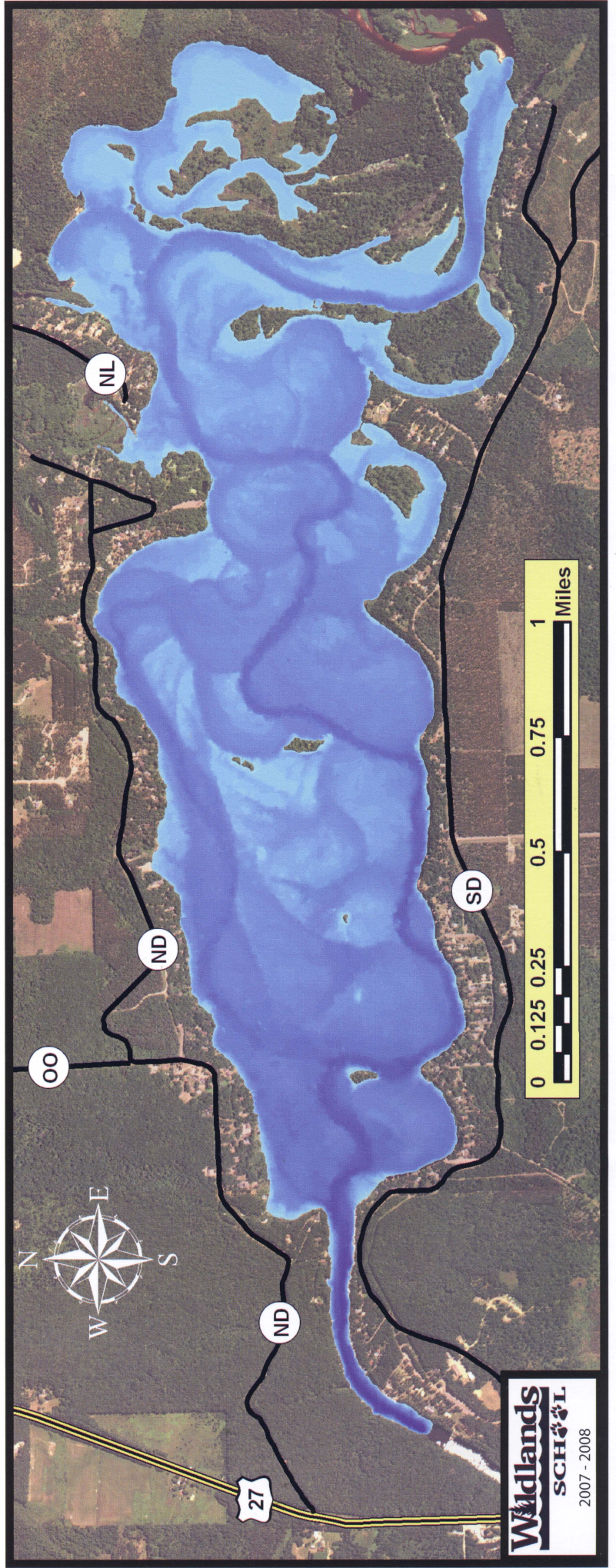
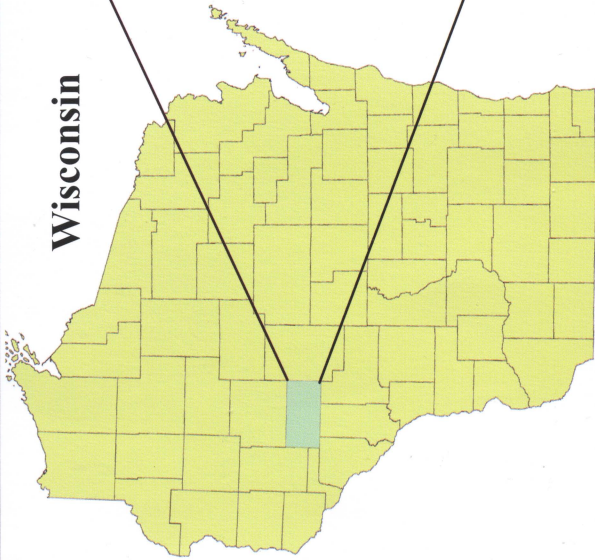
Bathymetric surveyors: Sawyer Stubbe, Cesar Villegas,
Herb Comstock, Robin Walsh, Gary Speich,
Paul Tweed, Ken Frost, Mike Kortness



GPS bathymetric map by
Cesar Villegas and Sawyer Stubbe
Students - Wildlands High School

Lake Eau Claire

This project was funded by grants
from the WISCONSIN DEPARTMENT
of NATURAL RESOURCES.



Lake Eau Claire Mapping Project

Wildlands School Student Project

From October through early December 2007, Wildlands School students collected over 90,000 depth readings on Lake Eau Claire. Each depth reading was recorded by a GPS enabled hand-held computer.

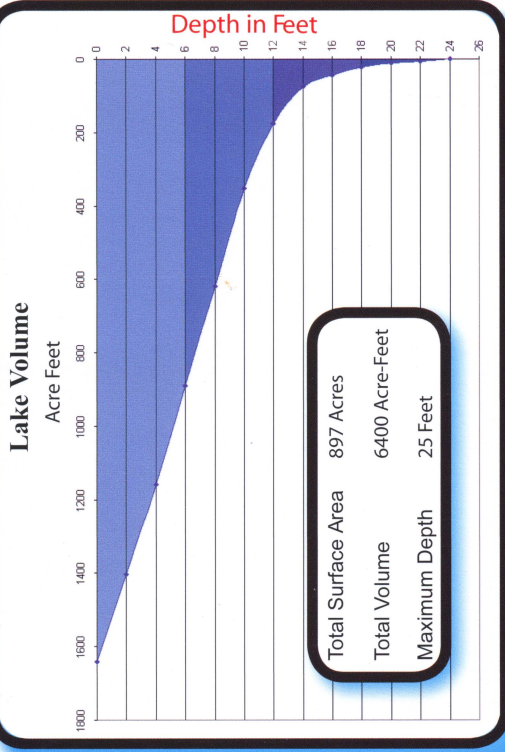
The lake data was processed using geographic information systems software, known as ArcGIS. The image below is a very accurate representation of the lake by 1 foot depths. This image represents the data points as connected triangle planar surfaces in ArcGIS.

This project was made possible through the cooperation of the Wisconsin DNR Lake Grant program, Lake Eau Claire Association members, and Wildlands School.

To learn more about Wildlands School, visit our website: www.wildlandsschool.net

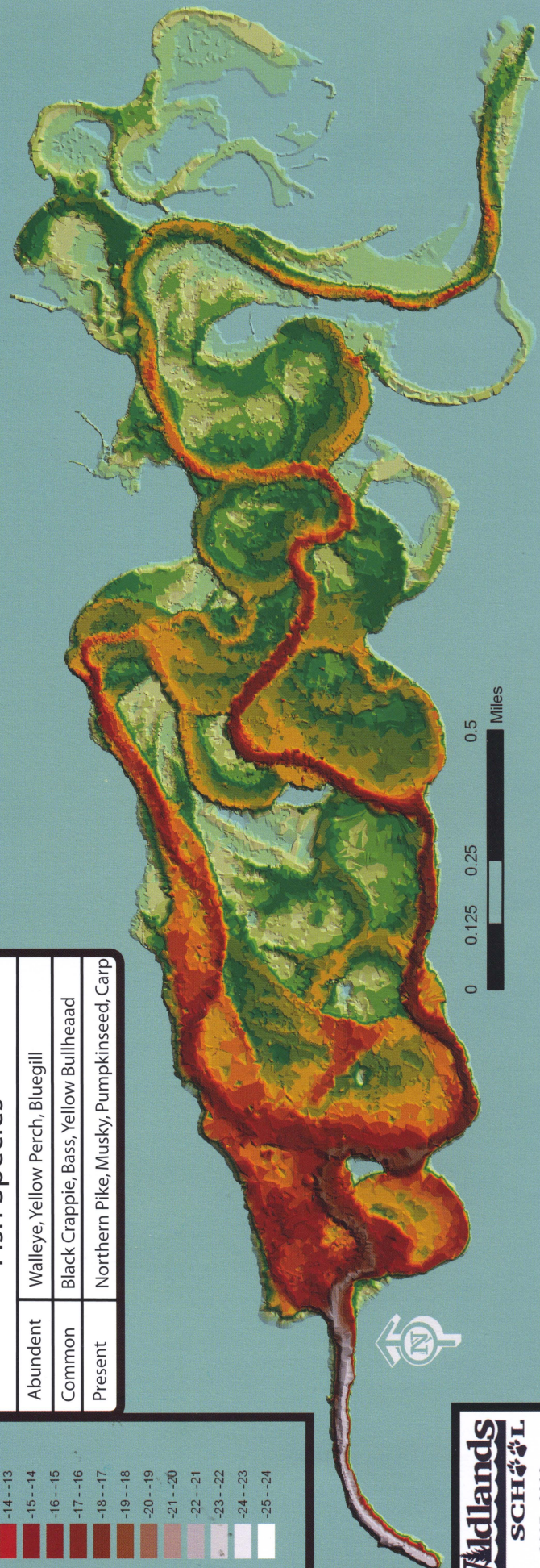
Lake Eau Claire

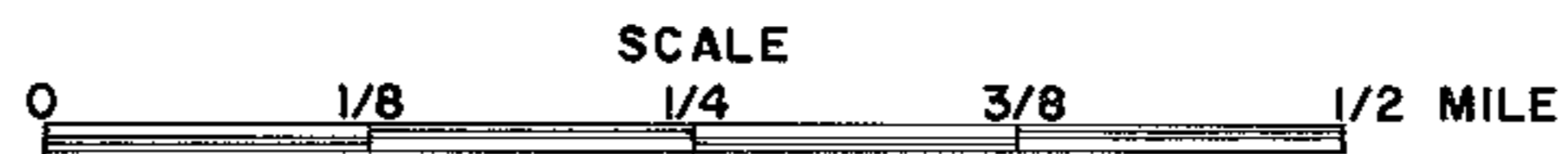
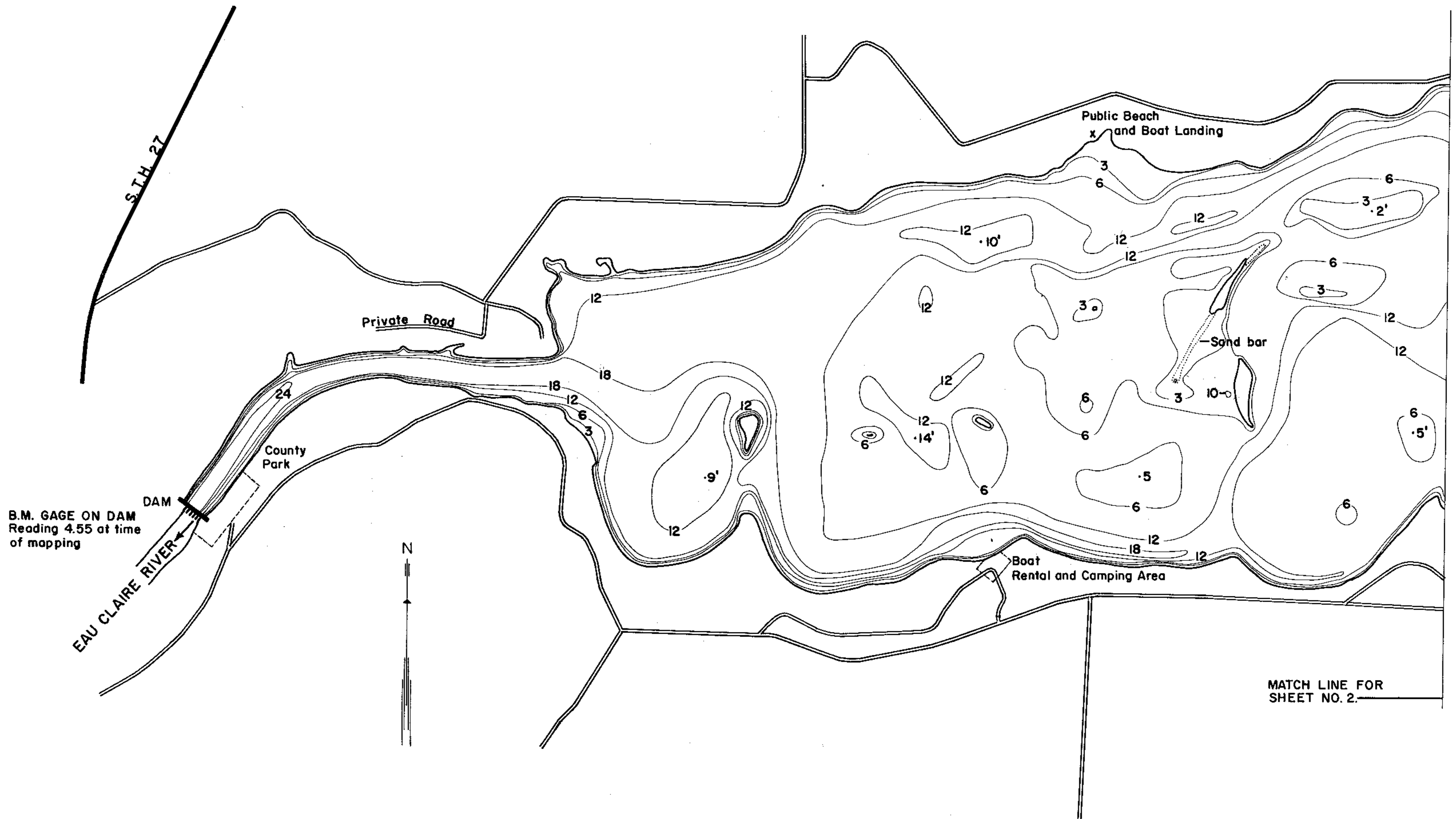
Depth in ft.



Fish Species

Abundant	Walleye, Yellow Perch, Bluegill
Common	Black Crappie, Bass, Yellow Bullhead
Present	Northern Pike, Musky, Pumpkinseed, Carp



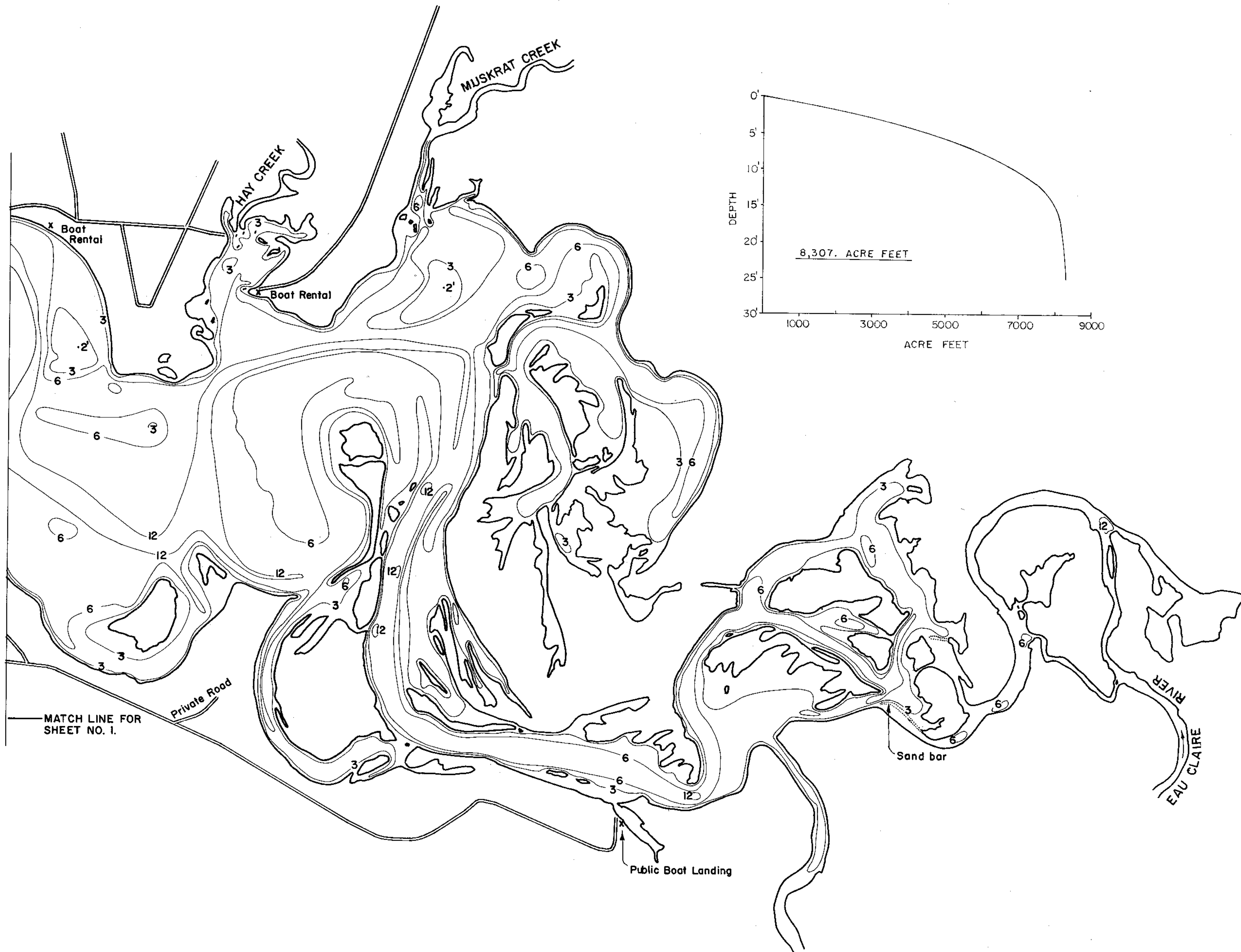


LAKE MAPPED 1960
SOURCE OF INFORMATION
SOUNDINGS

AREA 1118 Acres (Islands not included)
TOTAL SHORELINE
MAX. DEPTH 25'
SCALE: 8"=1-Mile

LAKE SURVEY MAP

LAKE EAU CLAIRE (Sheet 2 of 2)
SECTIONS 2-3-4-5
TOWNSHIP T. 26 N.
RANGE R. 6 W.
TOWN BRIDGE CREEK
COUNTY EAU CLAIRE



LAKE MAPPED 1960
SOURCE OF INFORMATION _____
SOUNDINGS _____

AREA 1118 Acres (Islands not included)
TOTAL SHORELINE _____
MAX. DEPTH 25'
SCALE 8"=1 Mile

Source:Color Images

Cesar Villegas, Sawyer Stubbe and Paul Tweed

Wildlands School 2007-2008

Black and White 2 page map

Wisconsin Department of Natural Resources 608-266-2621

Eau Claire Lake – Eau Claire County, Wisconsin DNR Lake Map

Date – 1960 - Historical Lake Map - Not for Navigation

A Public Document - Please Identify the Source when using it.