

MAP 1 LAKE WISSOTA

LAKE WISSOTA

BATHYMETRIC MAP

Eagle Point, Anson and Lafayette Townships
CHIPPewa COUNTY

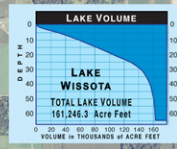
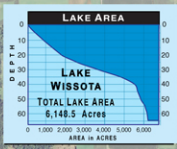
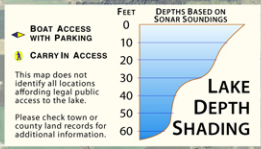
GPS and Sonar Survey by Sean and Karen Hartnett and Daniel Steltz

Map Construction by Sean Hartnett

Map funded by grants from the Wisconsin DNR and Xcel Energy to the Lake Wissota Improvement and Protection Association in cooperation with the Beaver Creek Reserve Citizen Science Center and the Chippewa Falls Rod and Gun Club

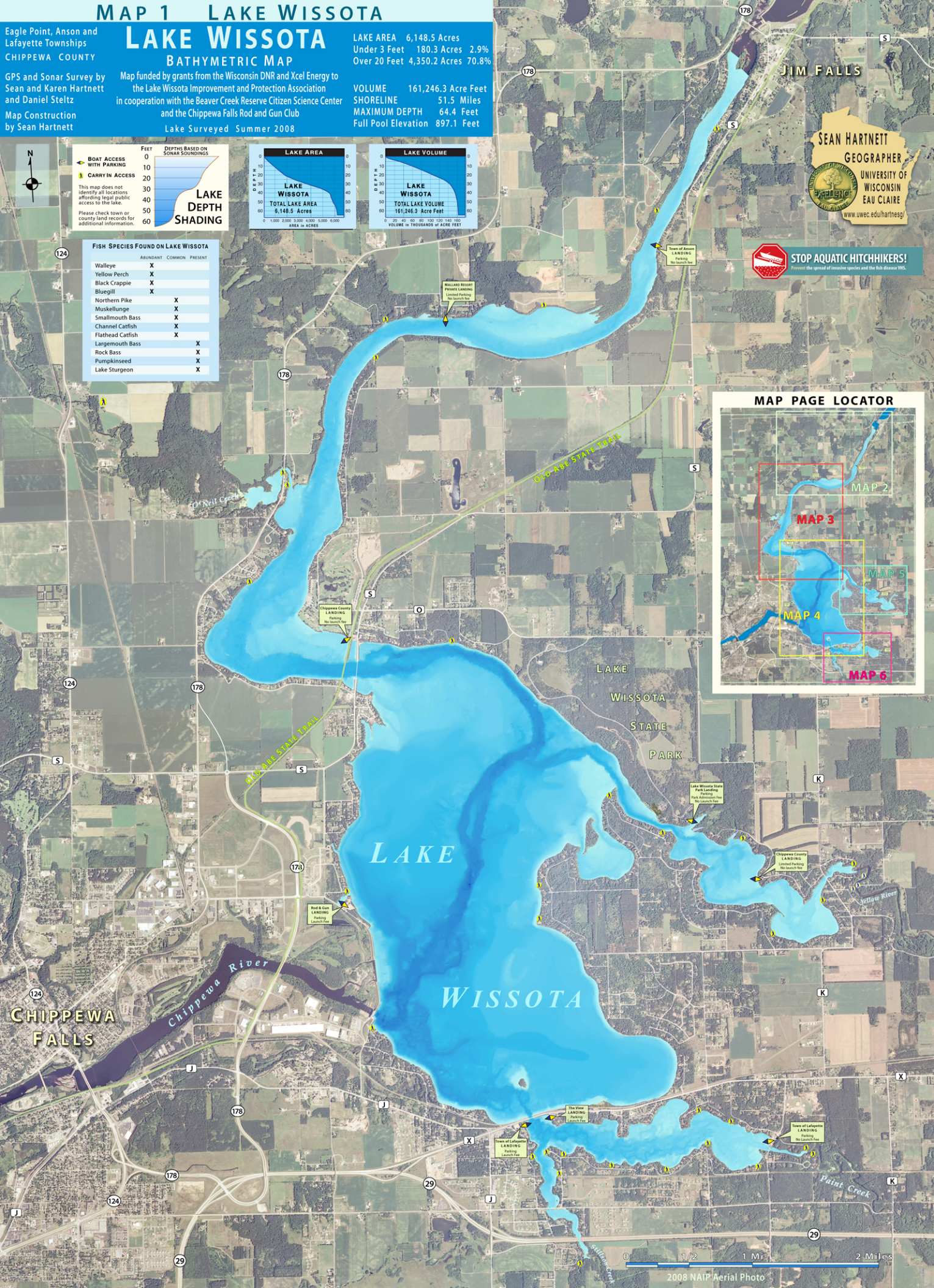
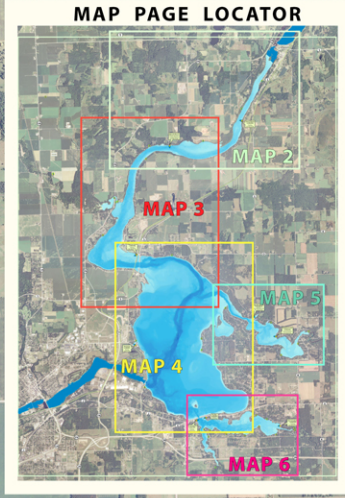
Lake Surveyed Summer 2008

LAKE AREA 6,148.5 Acres
Under 3 Feet 180.3 Acres 2.9%
Over 20 Feet 4,350.2 Acres 70.8%
VOLUME 161,246.3 Acre Feet
SHORELINE 51.5 Miles
MAXIMUM DEPTH 64.4 Feet
Full Pool Elevation 897.1 Feet



FISH SPECIES FOUND ON LAKE WISSOTA

FISH SPECIES	ABUNDANT	COMMON	PRESENT
Walleye	X		
Yellow Perch	X		
Black Crappie	X		
Bluegill	X		
Northern Pike		X	
Muskellunge		X	
Smallmouth Bass		X	
Channel Catfish		X	
Flathead Catfish		X	
Largemouth Bass			X
Rock Bass			X
Pumpkinseed			X
Lake Sturgeon			X



MAP 2 UPPER LAKE WISSOTA

LAKE WISSOTA

BATHYMETRIC MAP

LAKE AREA 6,148.5 Acres
 Under 3 Feet 180.3 Acres 2.9%
 Over 20 Feet 4,350.2 Acres 70.8%

VOLUME 161,246.3 Acre Feet
 SHORELINE 51.5 Miles
 MAXIMUM DEPTH 64.4 Feet
 Full Pool Elevation 897.1 Feet

Map funded by grants from the Wisconsin DNR and Xcel Energy to the Lake Wissota Improvement and Protection Association in cooperation with the Beaver Creek Reserve Citizen Science Center and the Chippewa Falls Rod and Gun Club

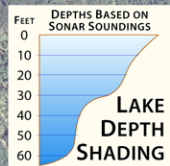
Lake Surveyed Summer 2008

Eagle Point, Anson and Lafayette Townships
 CHIPPEWA COUNTY

GPS and Sonar Survey by Sean and Karen Hartnett and Daniel Steltz

Map Construction by Sean Hartnett

- EMERGENT VEGETATION
 - SUBMERGENT VEGETATION
 - FLOATING VEGETATION
 - VEGETATION DATA FROM 2008 SURVEY
 - NAVIGATION HAZARD
 - FISH CRIBS
 - BOAT ACCESS WITH PARKING
 - ROCK REEFS
 - CARRY IN ACCESS
 - LAKE BOTTOM
 - Sd Sand
 - Mk Muck
 - Gr Gravel
 - St Silt
 - R Rubble
- This map does not identify all locations affording legal public access to the lake. Please check town or county land records for additional information.



178

178

JIM FALLS

OLD ABE STATE TRAIL

SEAN HARTNETT
 GEOGRAPHER

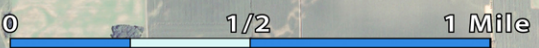
 UNIVERSITY OF WISCONSIN
 EAU CLAIRE
www.uwec.edu/hartnett/



MALLARD RESORT
 PRIVATE LANDING
 Limited Parking
 No launch fee

Town of Anson
 LANDING
 Parking
 No launch fee

178



2008 NAIP Aerial Photo



STOP AQUATIC HITCHHIKERS!
 Prevent the spread of invasive species and the fish disease WHS.



Eagle Point, Anson and Lafayette Townships
CHIPPEWA COUNTY

LAKE WISSOTA

BATHYMETRIC MAP

LAKE AREA 6,148.5 Acres
Under 3 Feet 180.3 Acres 2.9%
Over 20 Feet 4,350.2 Acres 70.8%

GPS and Sonar Survey by Sean and Karen Hartnett and Daniel Steltz
Map Construction by Sean Hartnett

Map funded by grants from the Wisconsin DNR and Xcel Energy to the Lake Wissota Improvement and Protection Association in cooperation with the Beaver Creek Reserve Citizen Science Center and the Chippewa Falls Rod and Gun Club
Lake Surveyed Summer 2008

VOLUME 161,246.3 Acre Feet
SHORELINE 51.5 Miles
MAXIMUM DEPTH 64.4 Feet
Full Pool Elevation 897.1 Feet

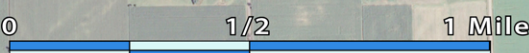
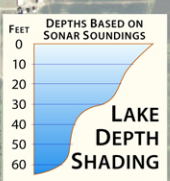
EMERGENT VEGETATION
SUBMERGENT VEGETATION
FLOATING VEGETATION

VEGETATION DATA FROM 2008 SURVEY

NAVIGATION HAZARD **FISH CRIBS**
BOAT ACCESS WITH PARKING **ROCK REEFS**
CARRY IN ACCESS

LAKE BOTTOM
Sd Sand
Mk Muck
Gr Gravel
St Silt
R Rubble

This map does not identify all locations affording legal public access to the lake. Please check town or county land records for additional information.



STOP AQUATIC HITCHHIKERS!
Prevent the spread of invasive species and the fish disease VHS.

LOCATOR MAP

MAP 3

SEAN HARTNETT
GEOGRAPHER
UNIVERSITY OF WISCONSIN
EAU CLAIRE
www.uwec.edu/hartnetsg/

OLD ABE STATE TRAIL

LAKE WISSOTA STATE PARK

MALLARD RESORT PRIVATE LANDING
Limited Parking
No launch fee

Chippewa County LANDING
Parking
No launch fee

O'Neil Creek

LAKE WISSOTA
BATHYMETRIC MAP

Eagle Point, Anson and Lafayette Townships

CHIPPEWA COUNTY

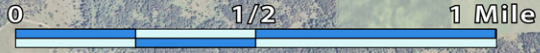
GPS and Sonar Survey by Sean and Karen Hartnett and Daniel Steltz

Map Construction by Sean Hartnett

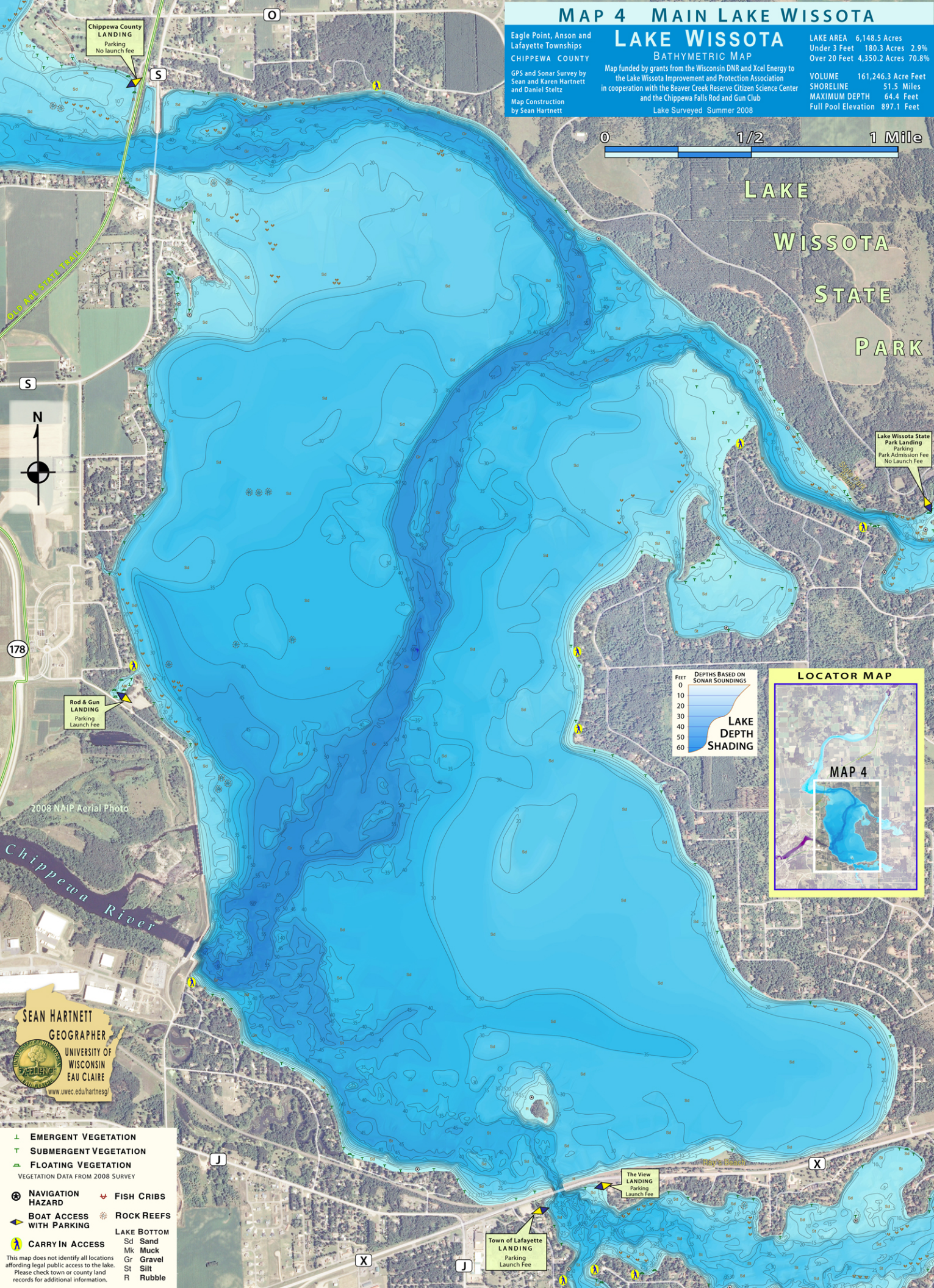
Map funded by grants from the Wisconsin DNR and Xcel Energy to the Lake Wissota Improvement and Protection Association in cooperation with the Beaver Creek Reserve Citizen Science Center and the Chippewa Falls Rod and Gun Club
Lake Surveyed Summer 2008

LAKE AREA 6,148.5 Acres
Under 3 Feet 180.3 Acres 2.9%
Over 20 Feet 4,350.2 Acres 70.8%

VOLUME 161,246.3 Acre Feet
SHORELINE 51.5 Miles
MAXIMUM DEPTH 64.4 Feet
Full Pool Elevation 897.1 Feet



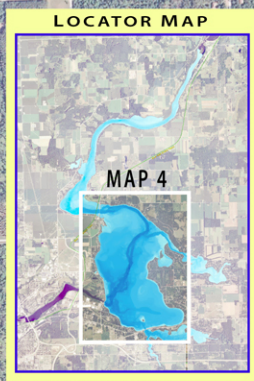
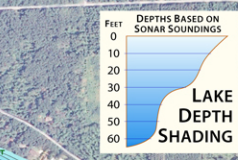
LAKE
WISSOTA
STATE
PARK



Chippewa County LANDING
Parking
No launch fee

Lake Wissota State Park Landing
Parking
Park Admission Fee
No Launch Fee

Rod & Gun LANDING
Parking
Launch Fee



2008 NAIP Aerial Photo

Chippewa River

SEAN HARTNETT
GEOGRAPHER
UNIVERSITY OF WISCONSIN
EAU CLAIRE
www.uwec.edu/hartnesj

- ┆ EMERGENT VEGETATION
 - ┆ SUBMERGENT VEGETATION
 - ┆ FLOATING VEGETATION
- VEGETATION DATA FROM 2008 SURVEY

- ⊗ NAVIGATION HAZARD
- ⚓ FISH CRIBS
- ⚓ BOAT ACCESS WITH PARKING
- ⚓ ROCK REEFS
- ⚓ CARRY IN ACCESS

- LAKE BOTTOM
- Sd Sand
 - Mk Muck
 - Gr Gravel
 - Sl Silt
 - R Rubble

This map does not identify all locations affording legal public access to the lake. Please check town or county land records for additional information.

Town of Lafayette LANDING
Parking
Launch Fee

The View LANDING
Parking
Launch Fee

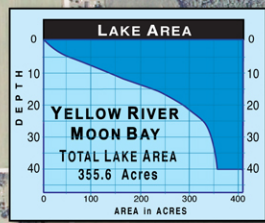
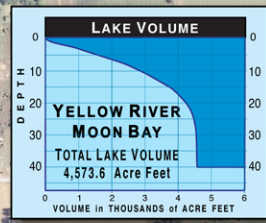
MAP 5 YELLOW RIVER- MOON BAY

Anson and Lafayette Townships
 CHIPPEWA COUNTY
 GPS and Sonar Survey by Sean and Karen Hartnett and Daniel Steltz
 Map Construction by Sean Hartnett

YELLOW RIVER - MOON BAY LAKE WISSOTA BATHYMETRIC MAP

Map funded by grants from the Wisconsin DNR and Xcel Energy to the Lake Wissota Improvement and Protection Association in cooperation with the Beaver Creek Reserve Citizen Science Center and the Chippewa Falls Rod and Gun Club
 Lake Surveyed Summer 2008

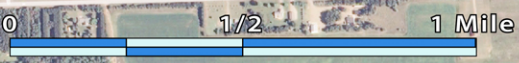
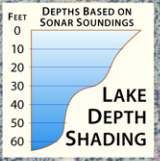
LAKE AREA 355.6 Acres
 Under 3 Feet 27.9 Acres 7.8%
 Over 20 Feet 65.0 Acres 18.3%
 VOLUME 4,573.5 Acre Feet
 SHORELINE 51.5 Miles
 MAXIMUM DEPTH 64.4 Feet
 Full Pool Elevation 897.1 Feet



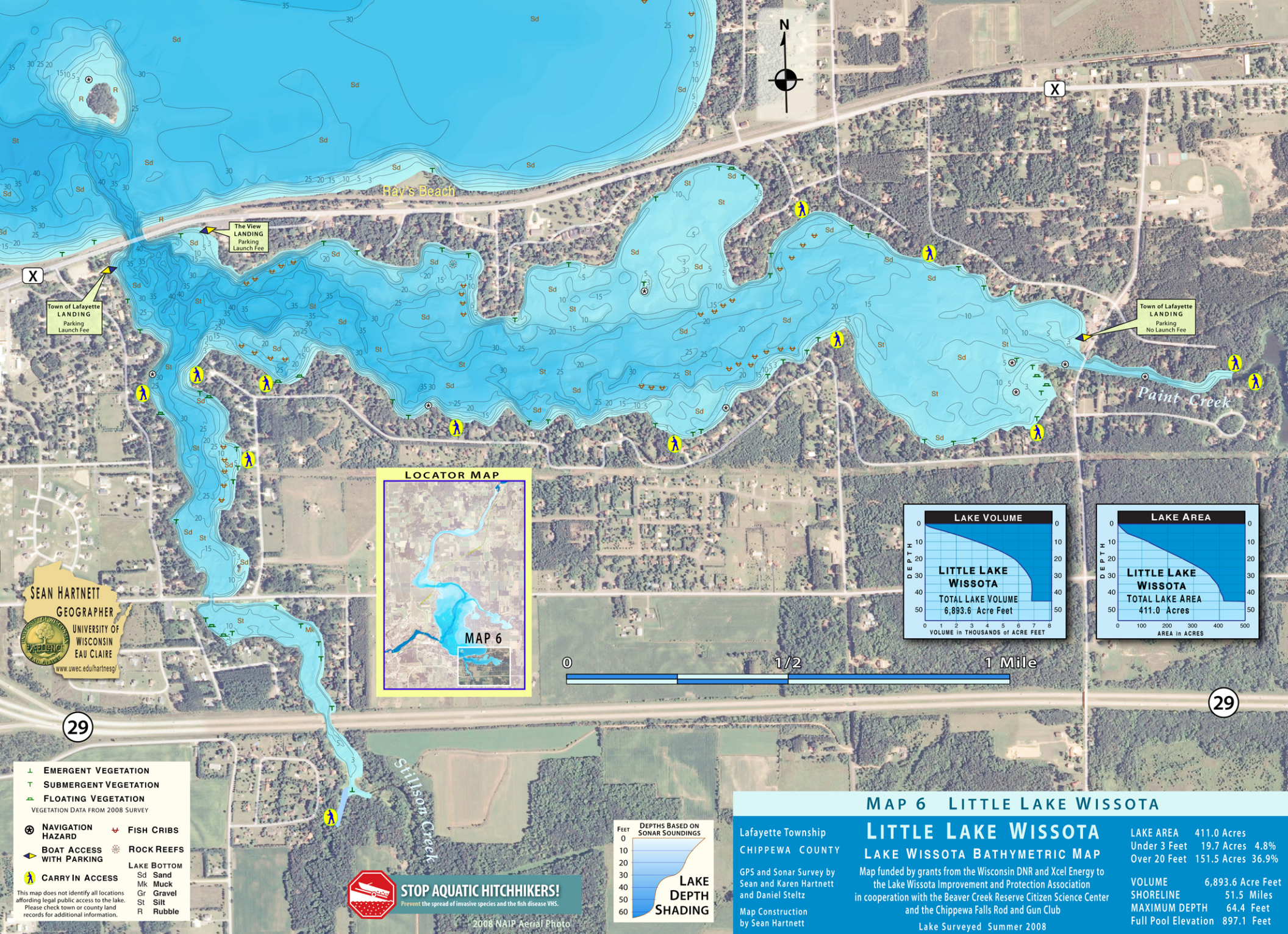
EMERGENT VEGETATION
SUBMERGENT VEGETATION
FLOATING VEGETATION
 VEGETATION DATA FROM 2008 SURVEY

NAVIGATION HAZARD **FISH CRIBS**
BOAT ACCESS WITH PARKING **ROCK REEFS**
CARRY IN ACCESS **LAKE BOTTOM**
 Sd Sand
 Mk Muck
 Gr Gravel
 St Silt
 R Rubble

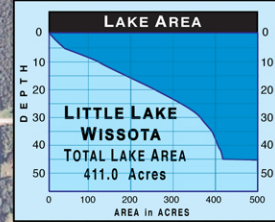
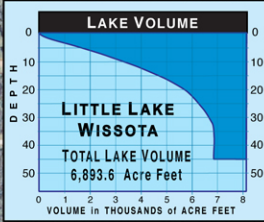
This map does not identify all locations affording legal public access to the lake. Please check town or county land records for additional information.



SEAN HARTNETT
 GEOGRAPHER
 UNIVERSITY OF WISCONSIN
 EAU CLAIRE
 www.uwec.edu/hartnesg/

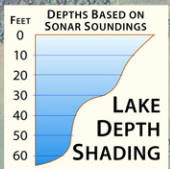


SEAN HARTNETT
GEOGRAPHER
 UNIVERSITY OF WISCONSIN
 EAU CLAIRE
 www.uwec.edu/hartnesg/



- EMERGENT VEGETATION
 - SUBMERGENT VEGETATION
 - FLOATING VEGETATION
 - VEGETATION DATA FROM 2008 SURVEY
 - NAVIGATION HAZARD
 - FISH CRIBS
 - BOAT ACCESS WITH PARKING
 - ROCK REEFS
 - CARRY IN ACCESS
 - LAKE BOTTOM
 - Sd Sand
 - Mk Muck
 - Gr Gravel
 - St Silt
 - R Rubble
- This map does not identify all locations affording legal public access to the lake. Please check town or county land records for additional information.

STOP AQUATIC HITCHHIKERS!
 Prevent the spread of invasive species and the fish disease VHS.



MAP 6 LITTLE LAKE WISSOTA
LITTLE LAKE WISSOTA LAKE WISSOTA BATHYMETRIC MAP

Lafayette Township
 CHIPPEWA COUNTY

GPS and Sonar Survey by Sean and Karen Hartnett and Daniel Steltz
 Map Construction by Sean Hartnett

Map funded by grants from the Wisconsin DNR and Xcel Energy to the Lake Wissota Improvement and Protection Association in cooperation with the Beaver Creek Reserve Citizen Science Center and the Chippewa Falls Rod and Gun Club

Lake Surveyed Summer 2008

LAKE AREA	411.0 Acres
Under 3 Feet	19.7 Acres 4.8%
Over 20 Feet	151.5 Acres 36.9%
VOLUME	6,893.6 Acre Feet
SHORELINE	51.5 Miles
MAXIMUM DEPTH	64.4 Feet
Full Pool Elevation	897.1 Feet

2008 NAIP Aerial Photo