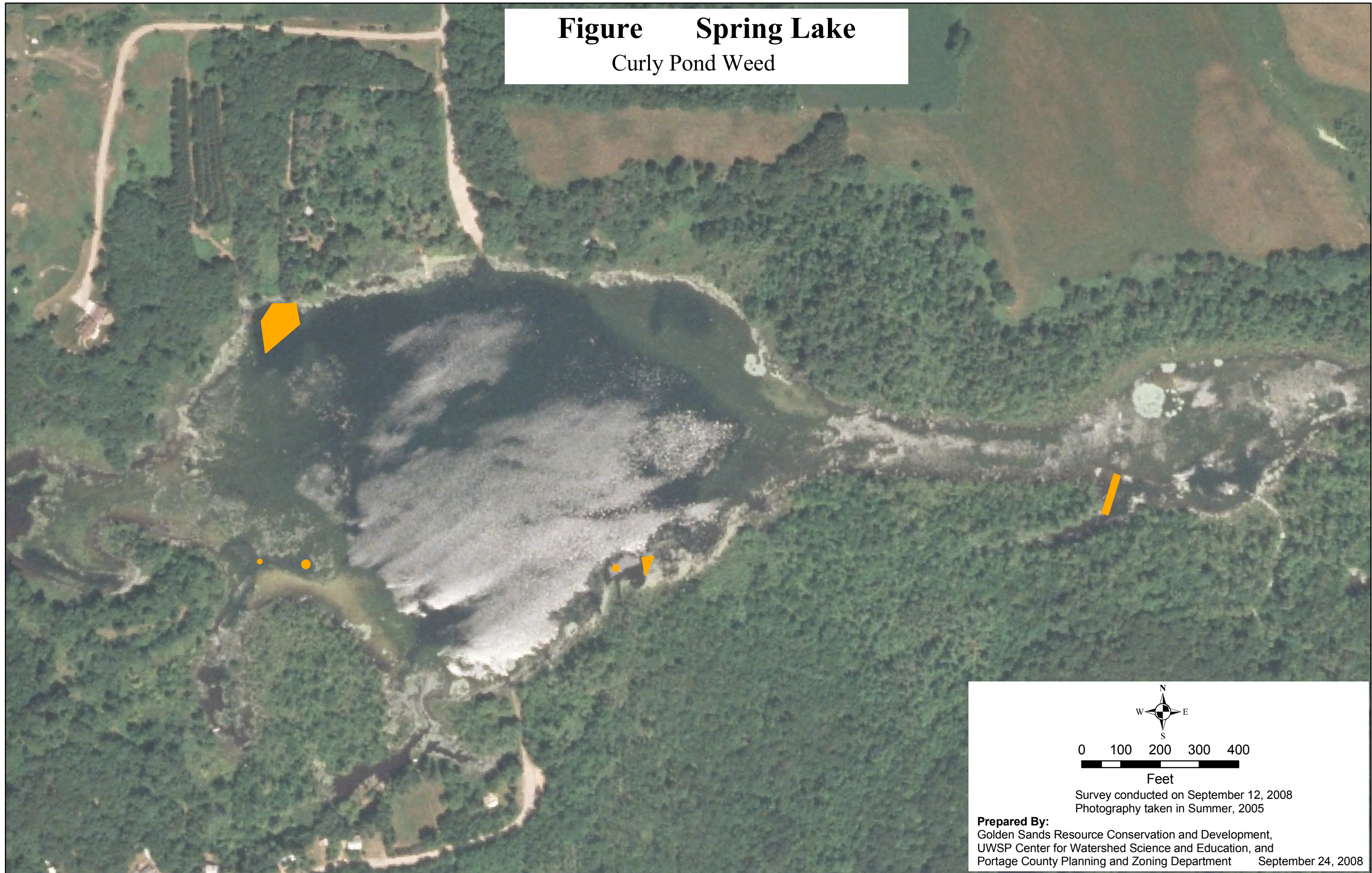


**Figure Spring Lake**  
Curly Pond Weed



0 100 200 300 400



Feet

Survey conducted on September 12, 2008  
Photography taken in Summer, 2005

**Prepared By:**  
Golden Sands Resource Conservation and Development,  
UWSP Center for Watershed Science and Education, and  
Portage County Planning and Zoning Department September 24, 2008