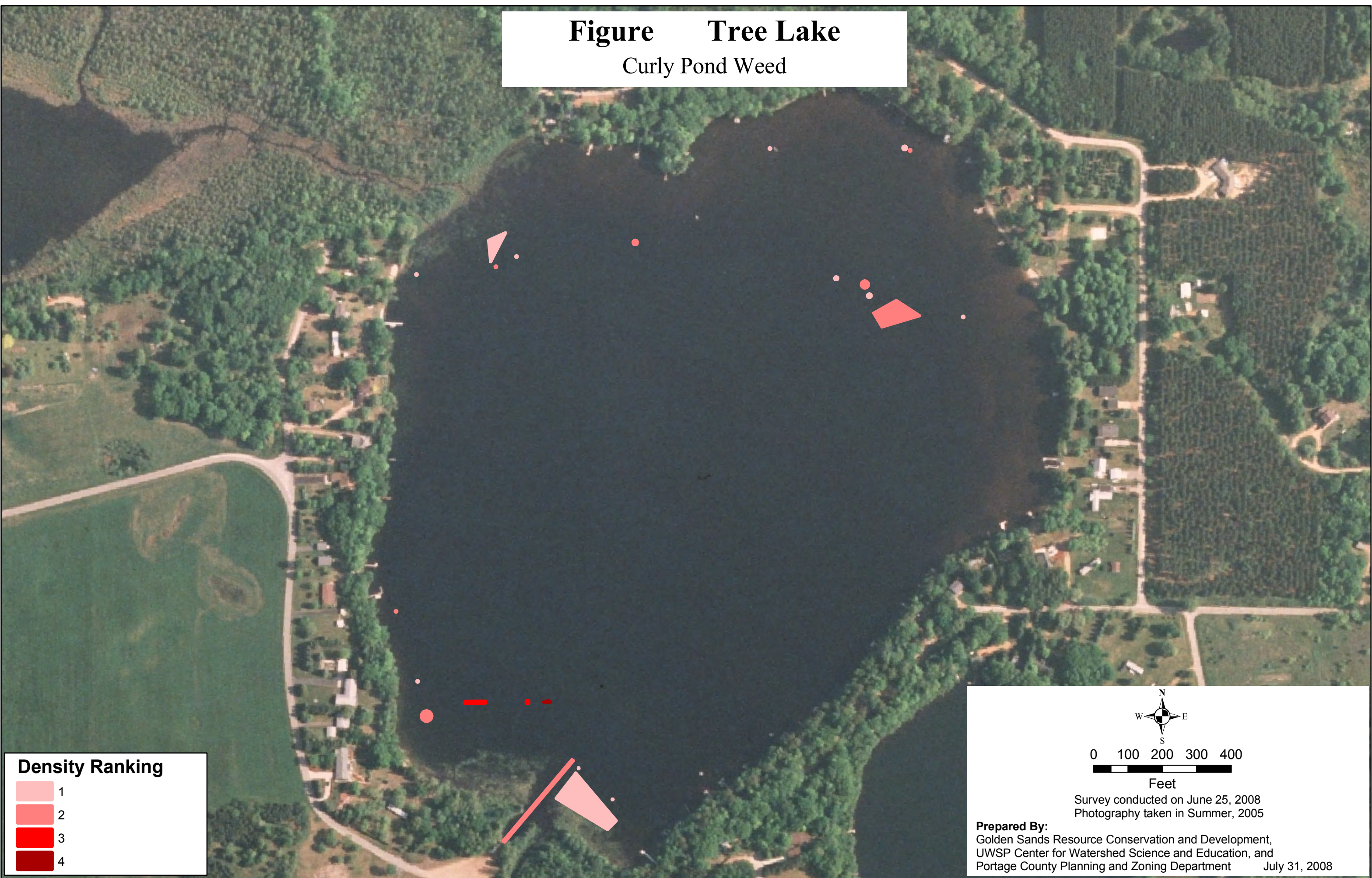


Figure Tree Lake
Curly Pond Weed



Density Ranking

- 1
- 2
- 3
- 4



0 100 200 300 400

Feet

Survey conducted on June 25, 2008
Photography taken in Summer, 2005

Prepared By:
Golden Sands Resource Conservation and Development,
UWSP Center for Watershed Science and Education, and
Portage County Planning and Zoning Department July 31, 2008