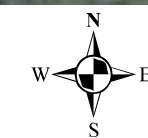
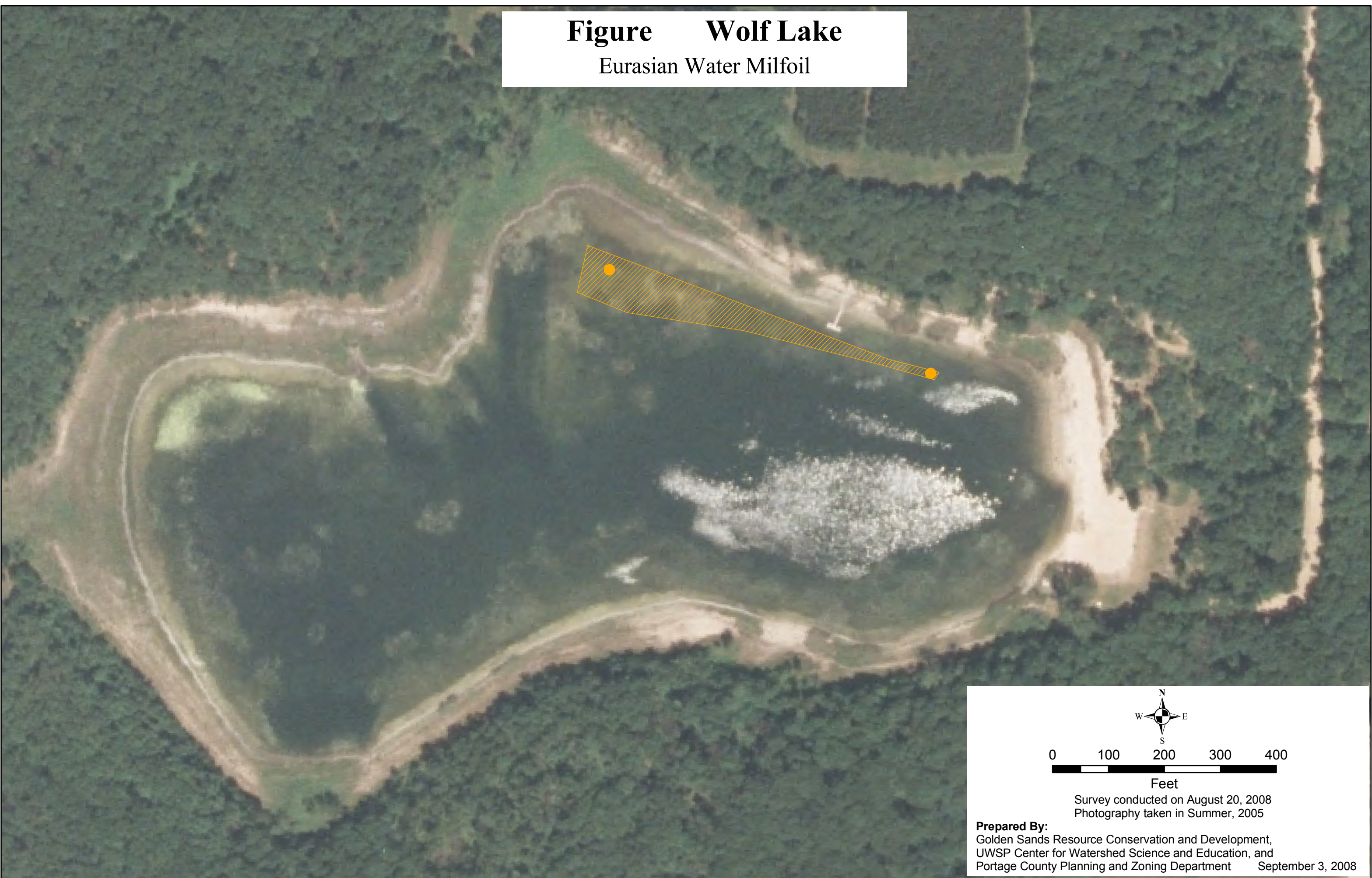


Figure Wolf Lake

Eurasian Water Milfoil



0 100 200 300 400

Feet

Survey conducted on August 20, 2008
Photography taken in Summer, 2005

Prepared By:
Golden Sands Resource Conservation and Development,
UWSP Center for Watershed Science and Education, and
Portage County Planning and Zoning Department September 3, 2008