





Stockman Property, Deer Lake II

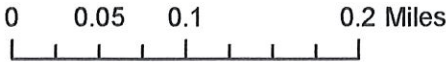


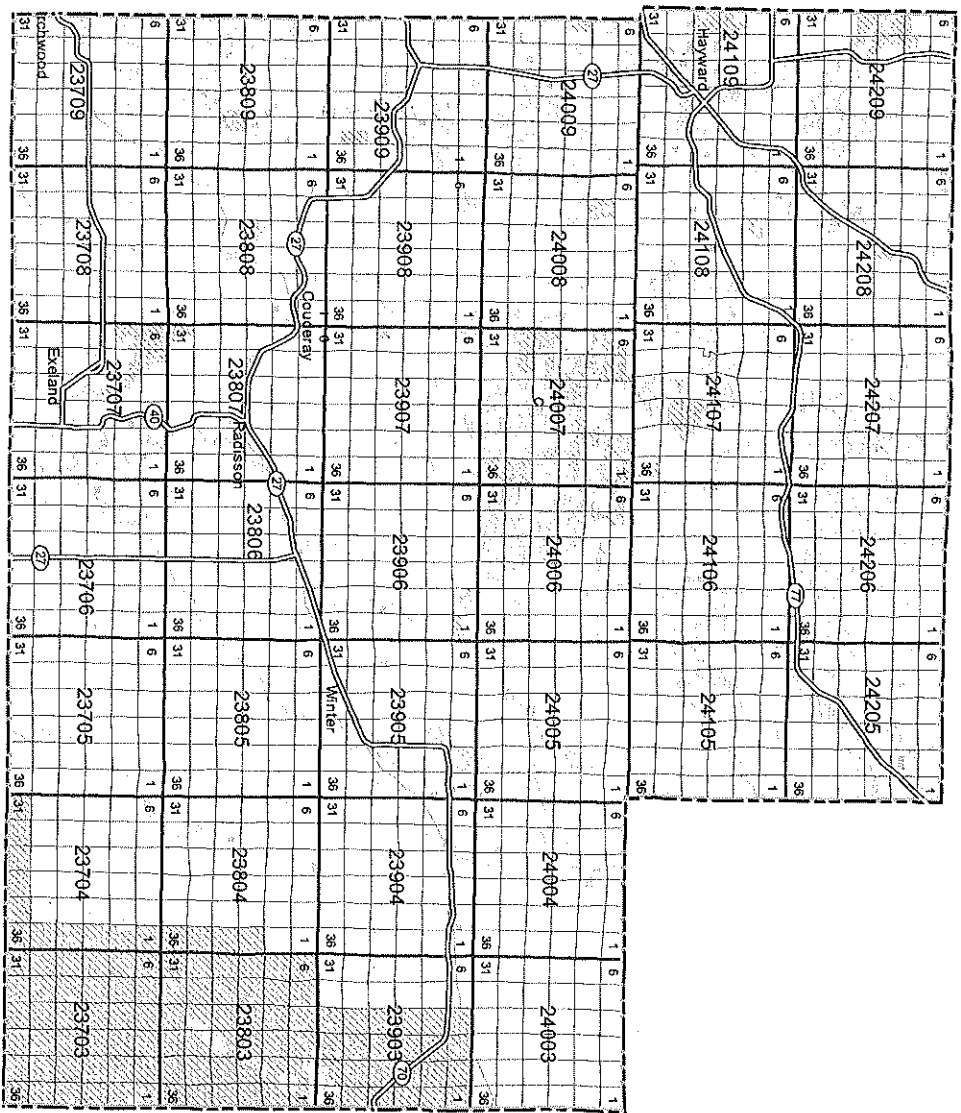
Parcel Name: Stockman
Sawyer County
T.37N. - R.8W. Sect. 32,33
Aerial Date 1992

WWLT 4/26/06 B.Lee

Legend

-  Stockman Property
-  All Roads
-  County Forests
-  Streams



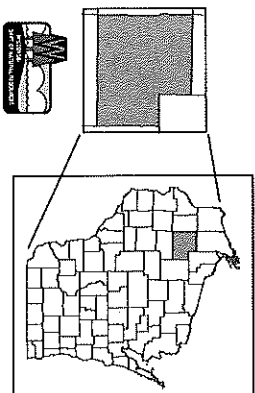


Sawyer County
Historic Structures by PLSS Section

- Legend**
- County Boundary
 - Historical Sites*
 - DNR Managed Lands
 - Municipalities



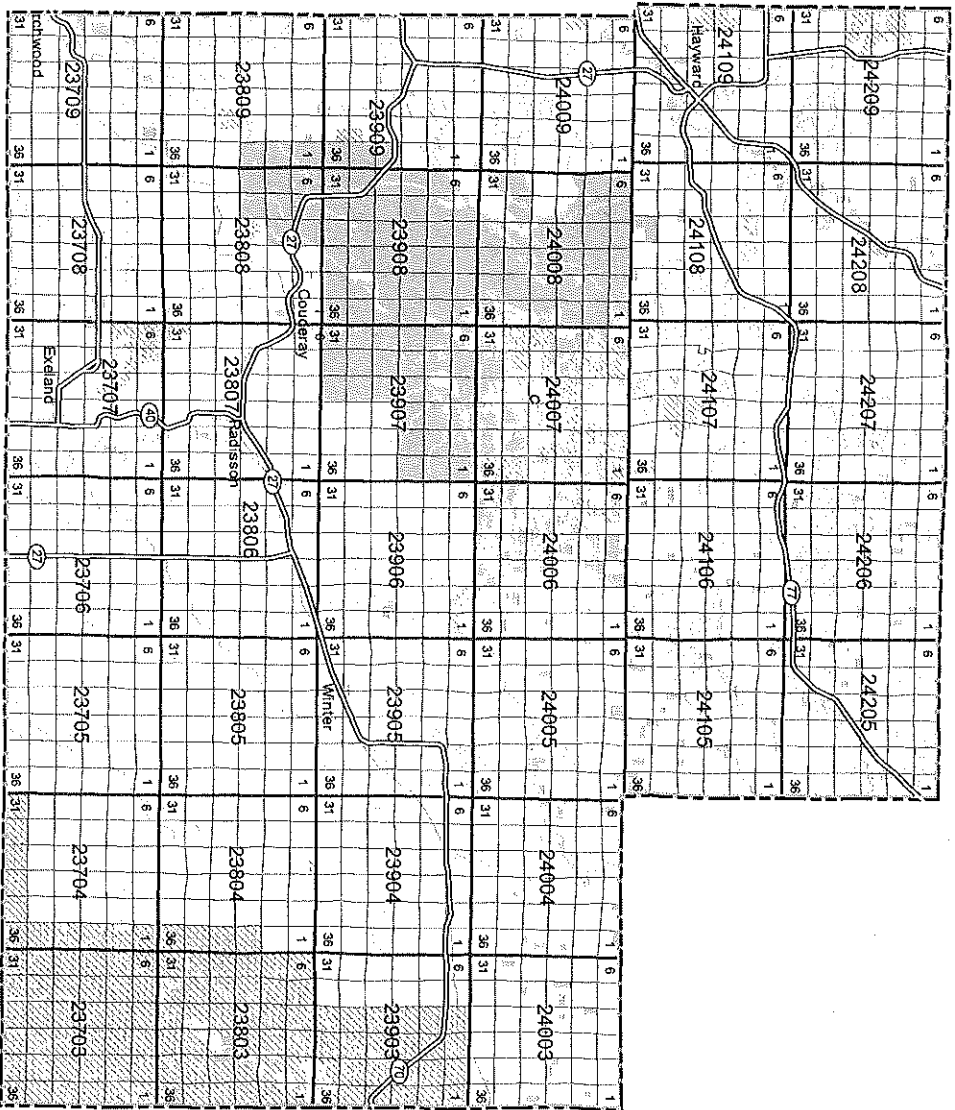
1:446,248



Expiration Date: 2005
Data Source: Division of Historic Preservation, Copyright 2004

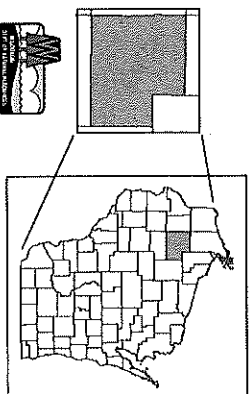
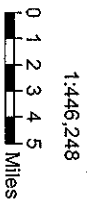
Do Not Duplicate

Printing Date: Apr 07, 2005



- Legend**
- County Boundary
 - Archaeological Sites*
 - DNR Managed Lands
 - Municipalities

Sawyer County
Archaeological Structures by PLSS Section



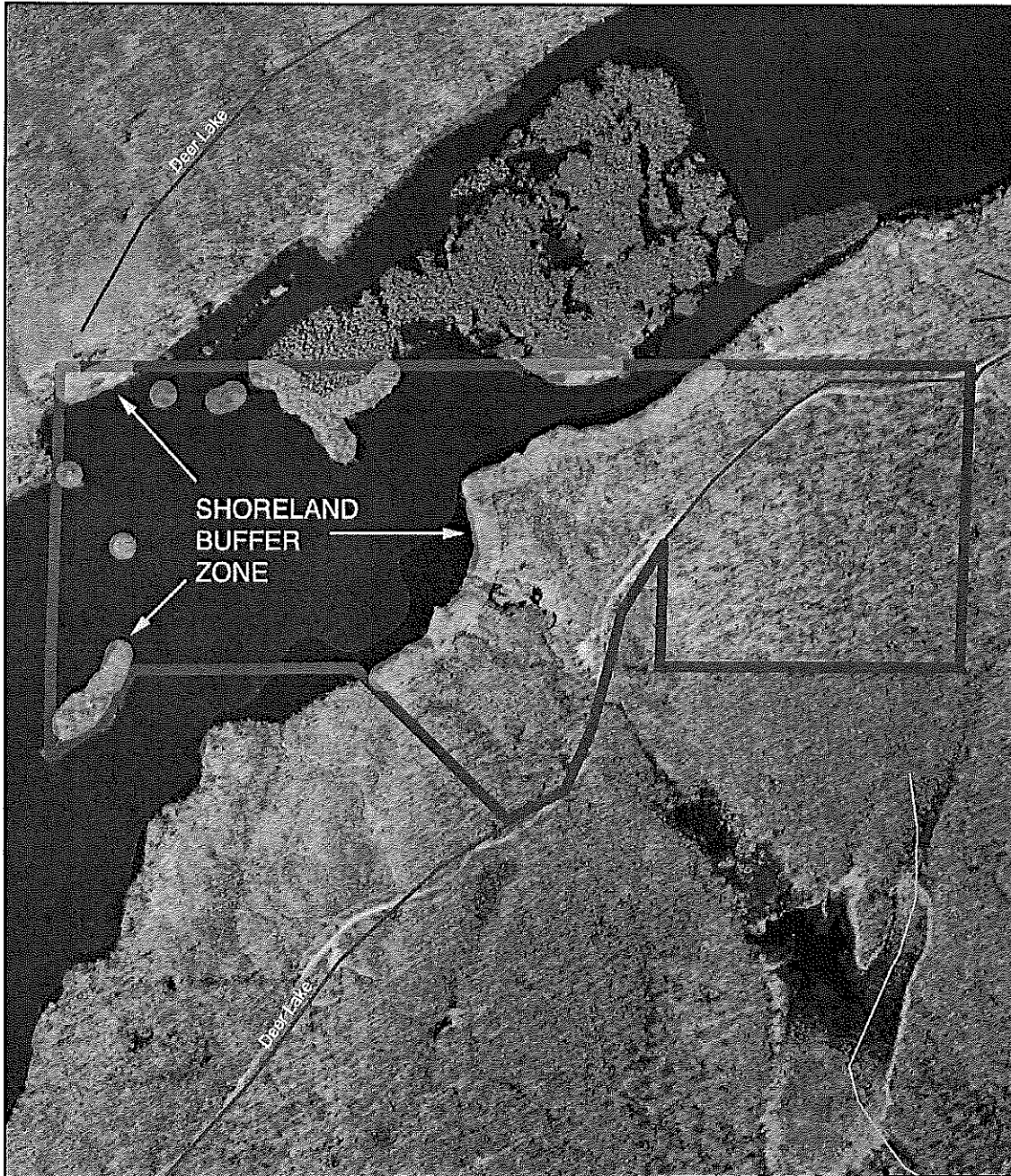
Expiration Date: 2005
 *Data Source: Division of Historic Preservation, Copyright 2004

Do Not Duplicate

Printing Date: Apr 07, 2005

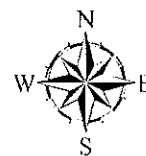
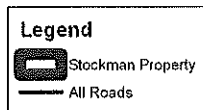
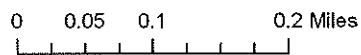
EXHIBIT B
PROPERTY MAP

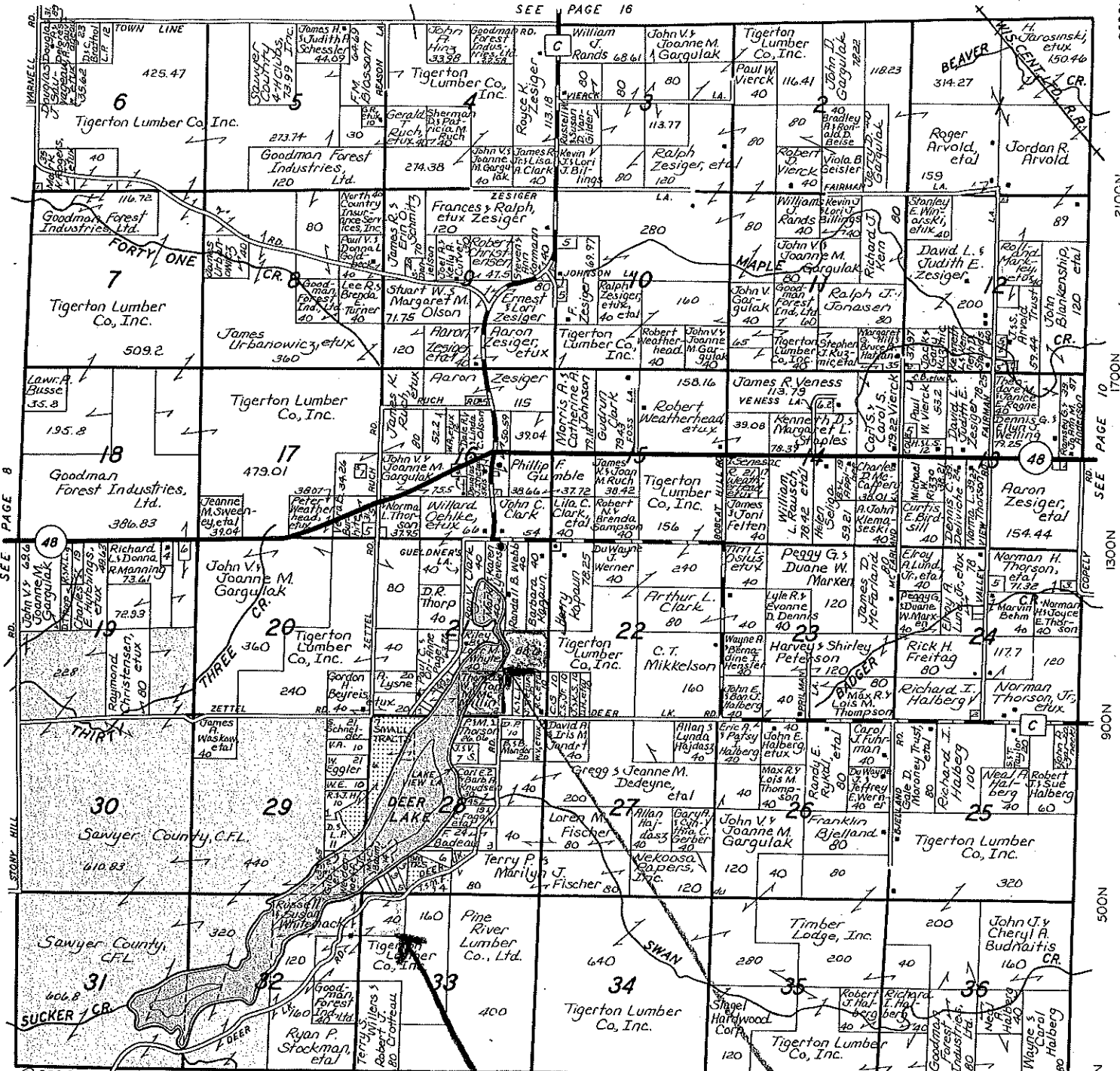
Stockman Property, Deer Lake II



Parcel Name: Stockman
Sawyer County
T.37N. - R.8W. Sect. 23,33
Aerial Date 1992

WWLT 4/25/06 B.Lee





© 2000 Rockford Map Publy, Inc.

14500W 14100W 13700W 13300W 12900W 12500W 12100W

Subject Previously Protected



www.rockfordmap.com

Now Order Your Books Online!



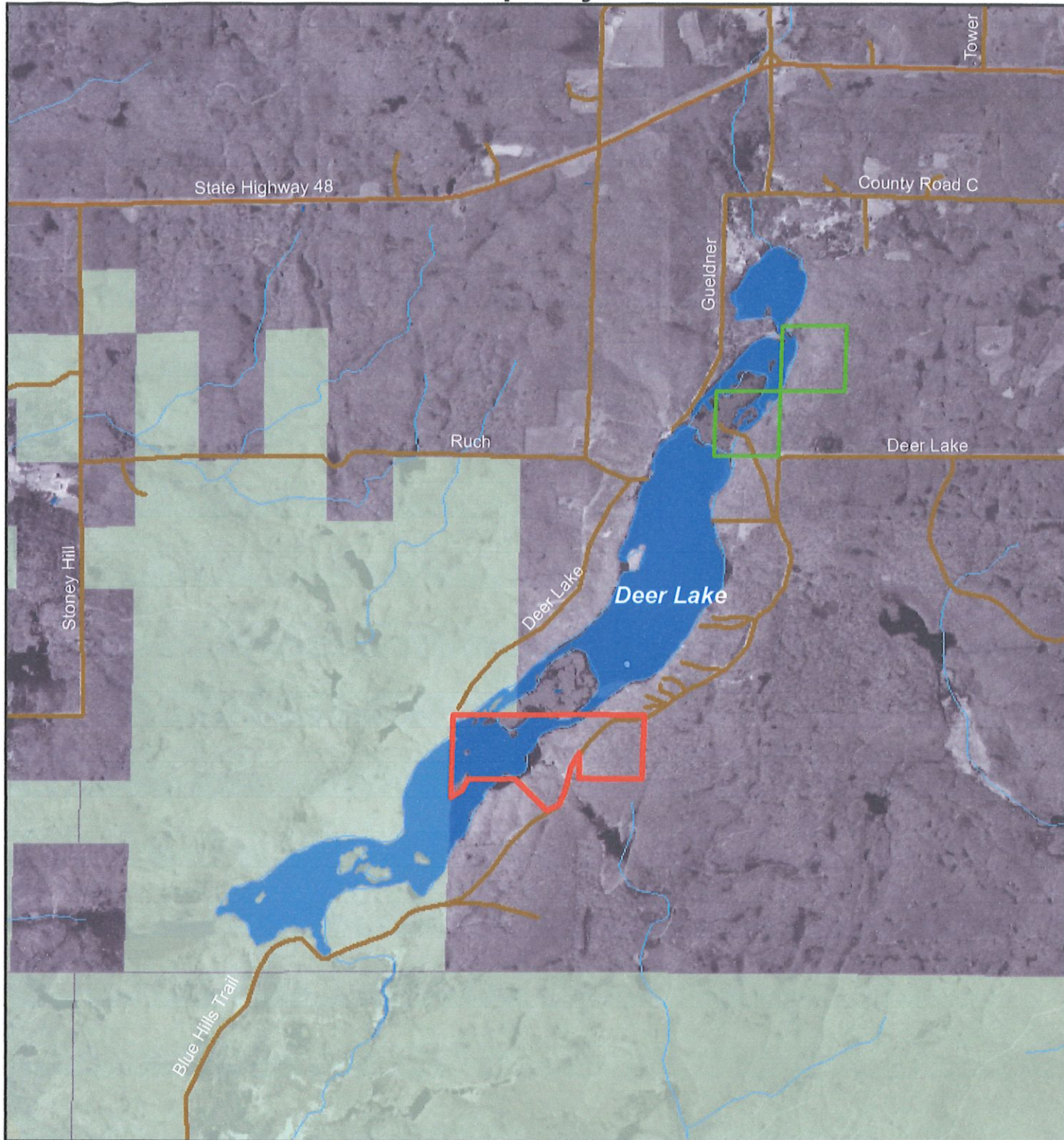
GREENER'S BUDGET LUMBER, INC.

Saturday Hours Summer 8-3 Winter 8-12

354-7842

MAIN STREET — BIRCHWOOD, WISCONSIN 54817

Stockman Property, Deer Lake II



Parcel Name: Stockman
Sawyer County
T.37N. - R.8W. Sect. 32,33
Aerial Date 1992

WWLT 4/26/06 B.Lee

Legend

-  Stockman Property
-  McMillin Property #85
-  All Roads
-  County Forests
-  Streams

0 0.4 0.8 1.6 Miles

