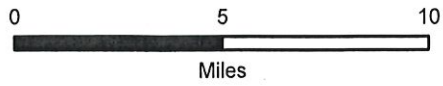


Polk County

Archaeological and Historical Sites

-  Archaeological Site*
-  Historical Site†
-  DNR Managed Land

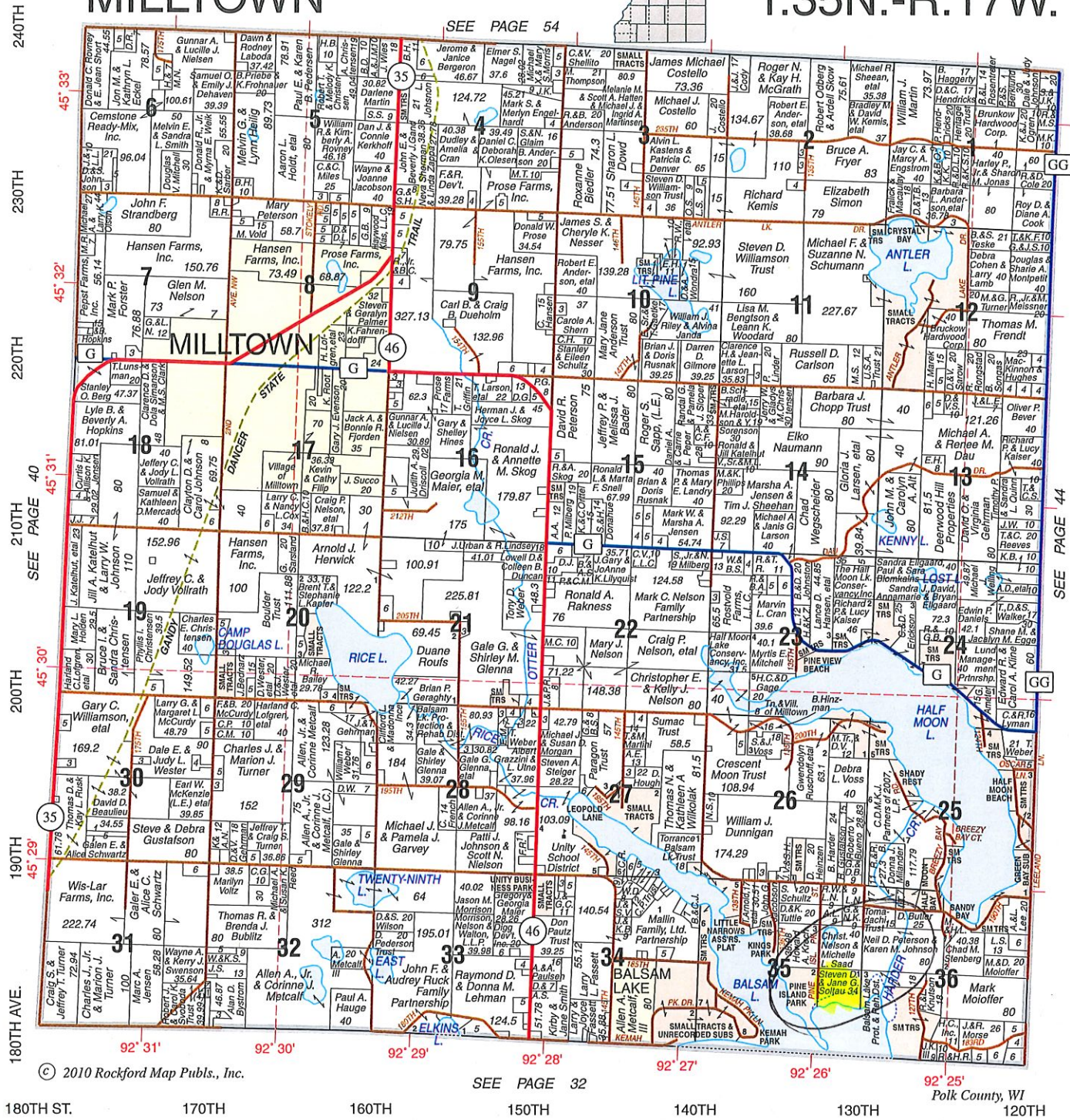


*This dataset represents the locations of archaeological sites as listed in the Archaeological Sites Inventory (ASI) of the Division of Historic Preservation, Wisconsin Historical Society. This specific data set is a customized selection of QQ Sections that contain known archaeological sites and burial sites.
 †This dataset represents the locations of historical sites as listed in the Architecture and History Inventory (AHI) of the Division of Historic Preservation, Wisconsin Historical Society. This specific data set is a customized selection of QQ Sections that contain known historic properties.
 This data was obtained and used with permission from the Division of Historic Preservation, Wisconsin Historical Society. Data recent as of March 2011.

MILLTOWN

T.35N.-R.17W.

SEE PAGE 54



*Telephone - Cable TV & LCTV - Internet - DSL/Cable Modems
Long Distance - Business Systems - Local Hometown Service

**All from one Local company,
now that's doing things right!**

LAKELAND COMMUNICATIONS

www.lakeland.wis

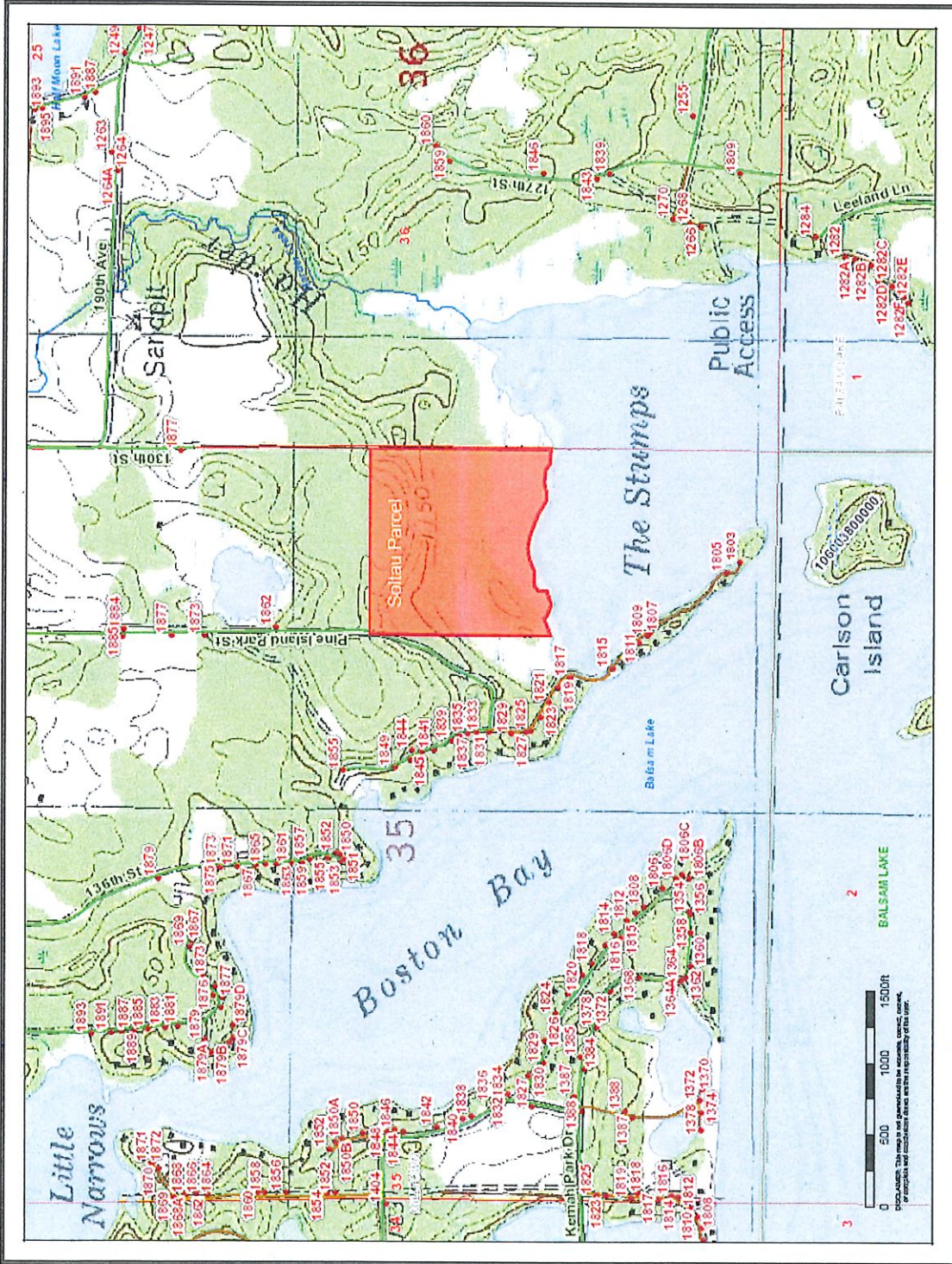
Balsam Lake - Centuria - Cushing - Frederic - Fox Creek
Luck - Milltown - St. Croix Falls

715-825-2171 or 715-472-2101 • Luck & Milltown Wisconsin
* Some services not available in all areas.

snap FITNESS • 24-7
fast • convenient • affordable

- No contracts
- Open 24 hours - 365 Days a Year
- 30 Day Risk Free Guarantee
- Ask Us About Our Referral Program

Debbie Lewis - Owner
Phone: 715-825-2277
104 2nd Avenue • P.O. Box 57 • Milltown, WI 54858
Email: milltown@snapfitness.com
www.snapfitness.com **Be well.**



Topography and drainage

The property slopes generally to Balsam Lake through wetlands adjacent to the lake. Erosion problems are not evident on the site, and because no construction activities are planned, none are anticipated.