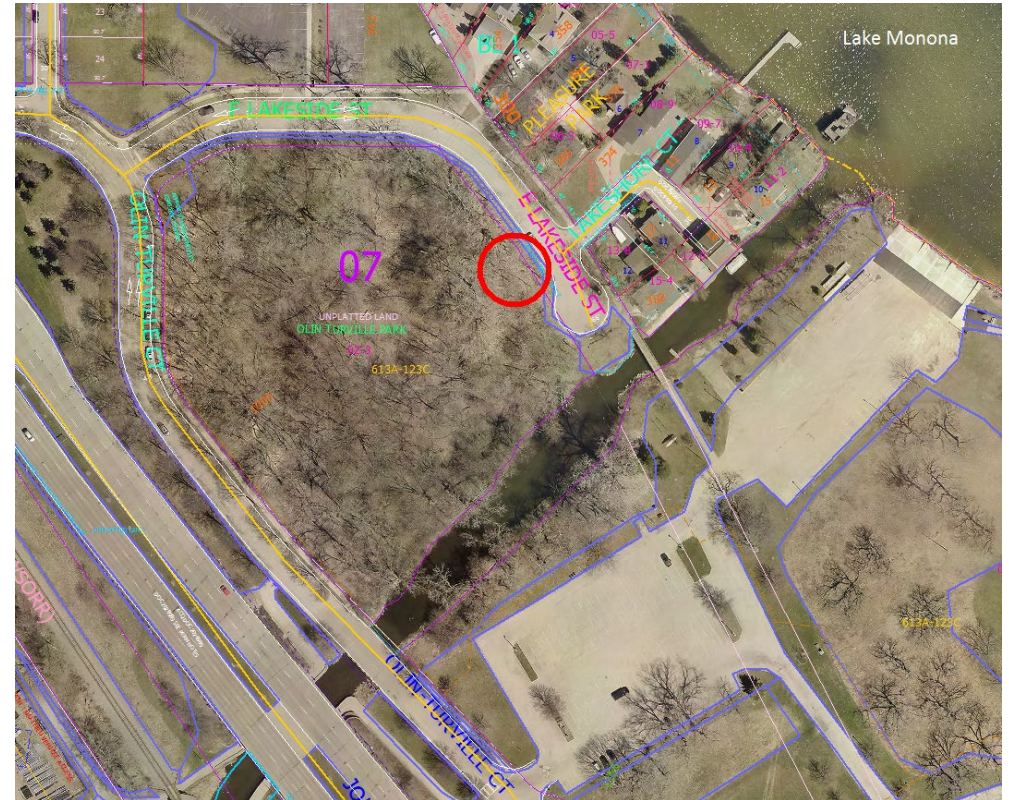
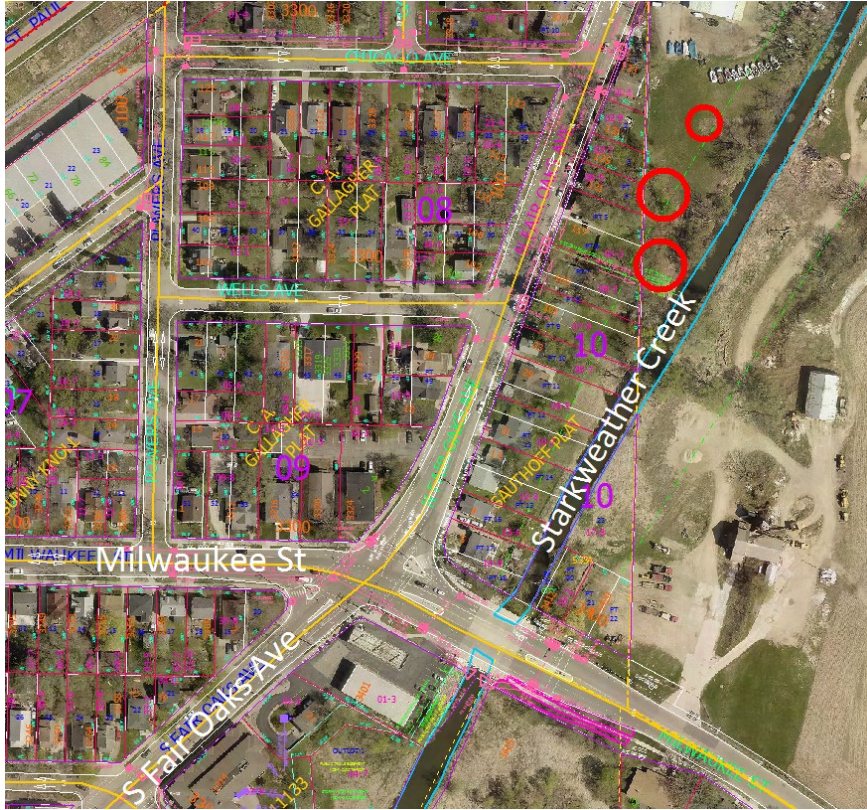


**AIS Early Detection & Response Grant Application**  
**City of Madison Japanese Knotweed Locations**

	Address	Year Reported	Distance to Water	Landowning Agency	Approx. Area of Infestation	Access	Notes
<b>East Side</b>	219 N Fair Oaks Ave; Marine Tops Unlimited	2018	Streambank – 100'	Privately owned	2,867 sf	From parking lot of Marine Tops Unlimited	Along Starkweather Creek; part of Blooming Grove
	Olin Park Woods	2018	Wooded wetland	Parks	770 sf	Directly S of E Lakeside St	
	Commercial Ave @ Mayfair Bike path	2018	<250' to Starkweather Creek	Engineering	4,473 sf	Directly off bike path	Just N of Hwy 30 near to RR and Starkweather Creek
	S dead end of Ingersoll St	2019	On shores of Lake Monona	Parks	~1,000 sf	Directly off S dead end of Ingersoll St	Directly on shoreline; may require aquatic pesticide
	RR—E of Dixon St, S of Milwaukee St, W of Starkweather Creek	2019	N of MG&E owned sedge meadow, <250' to Starkweather Creek	Railroad	~2,000 sf	Across walking bridge S of bike path to RR tracks (see map below)	MG&E sedge meadow is high quality, possible remnant
	4151 Nakoosa Tr	2019	NA	City of Madison	~3,750 sf	Off Nakoosa Tr	Site currently under construction; infestation not in const. area
<b>West Side</b>	Lake Wingra bike path; Edgewood Dr	2018	<200' to lake, <100' to wetland	Engineering/Private	7,517 sf	Directly S of bike path	NW shore of Lake Wingra
	Odana Hills Golf Course @ Beltline Hwy	2017	<200' to lake, <100' to wetland	Parks, DOT	~6,670 sf	Past putting green of last hole on Odana Hills Golf Course	SE shore of Odana Hills Pond
	Cannonball Bike Path	2018	<450' to retention ponds connected to Arboretum	Engineering + Private RR	12,000 sf	Directly off bike path	Treated in Aug. 2018
	331 S Broom St RR tracks along John Nolen Dr	2013	<250' to Lake Monona	Railroad	~3,125	S end of S Henry St	
	John Nolen Dr Retention Pond	2019	On stormwater channel	City of Madison Engineering	~2,000 sf	Parking lot of Home 2 Suites/ WI Dept. of Revenue	Nearby infestation on private land has been treated once in 2019—resprouts are responsibility of private landowner (see map below)
	Eau Claire Ave @ Old Middleton Rd	2018	NA	City of Madison Streets, Railroad	~6,000 sf	Intersection of Eau Claire @ Old Middleton	Access from sidewalk on Old Middleton + down slope N of this area to RR tracks

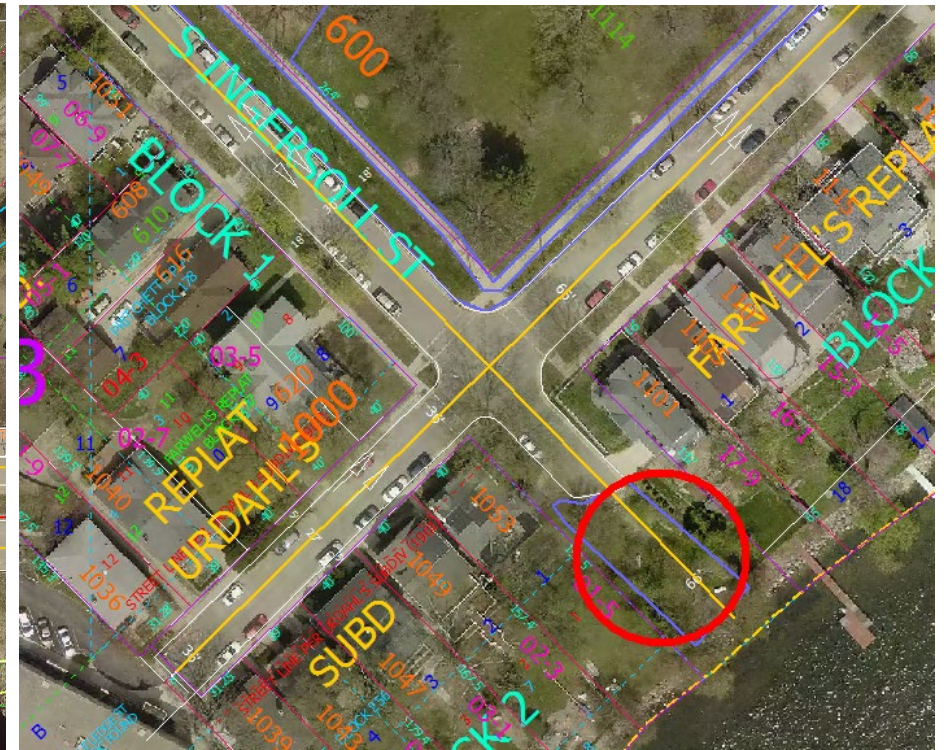
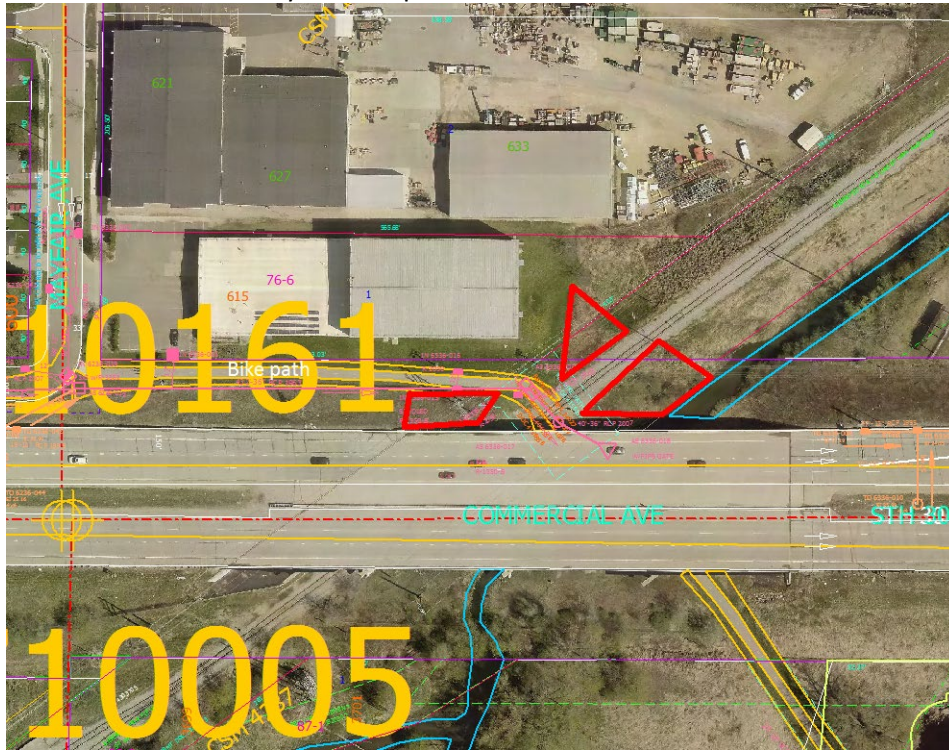
219 N Fair Oaks, Marine Tops Unlimited



Olin Park Woods



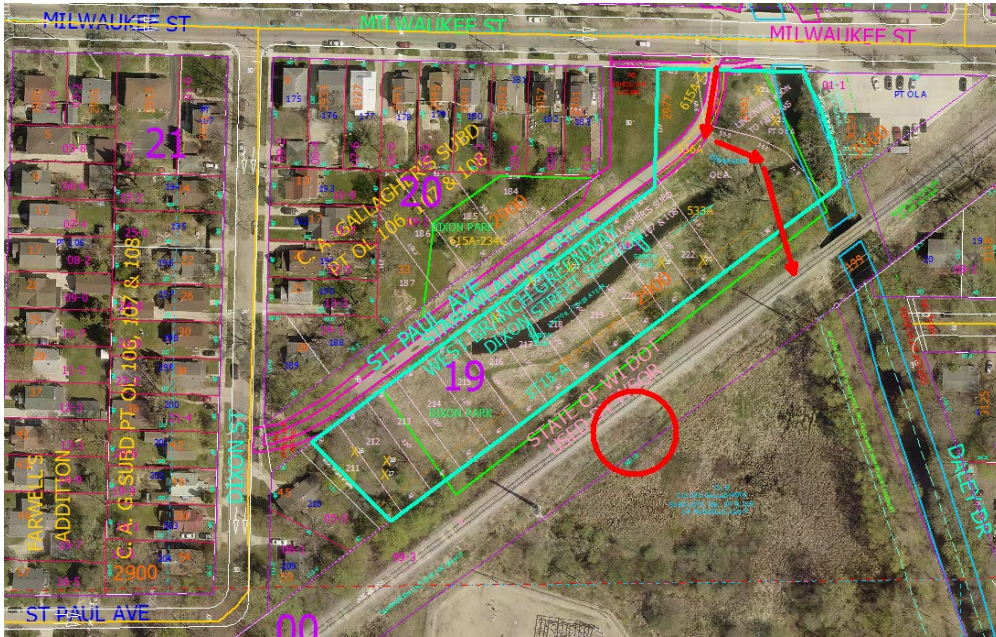
Commercial Ave @ Mayfair Bike path



S dead end of Ingersoll St



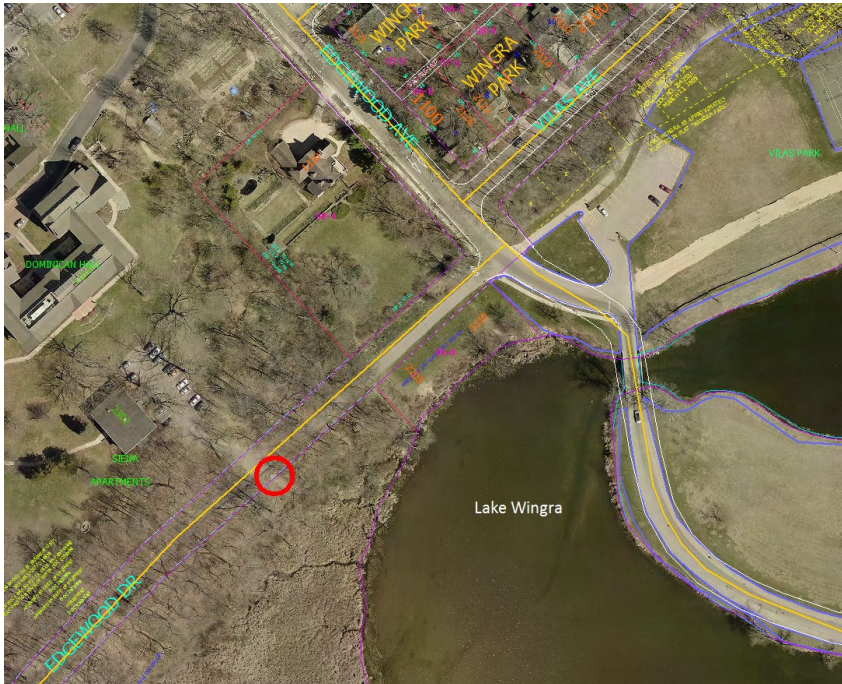
RR—E of Dixon St, S of Milwaukee St, W of Starkweather Creek



4151 Nakoosa Tr

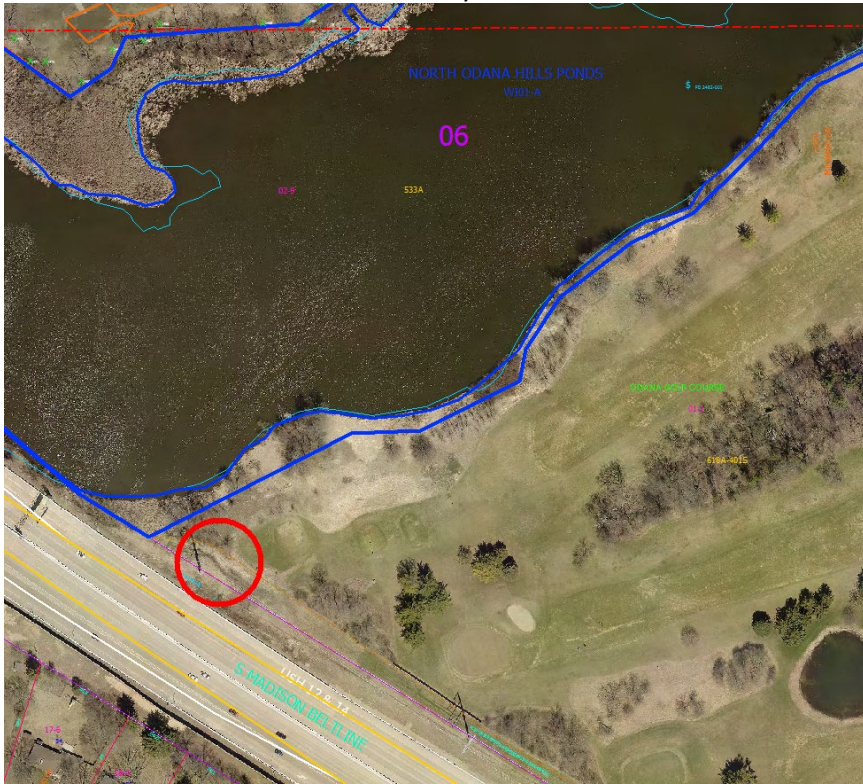


Lake Wingra bike path;  
Edgewood Dr





Odana Hills Golf Course @ Beltline Hwy



Cannonball Bike Path  
(Heavy infestation in red outline, scattered patches in yellow)



