

PLANNING AND ZONING DEPARTMENT

1462 STRONGS AVENUE, STEVENS POINT, WI 54481 • PHONE: 715-346-1334 • FAX: 715-346-1677

December 5, 2024

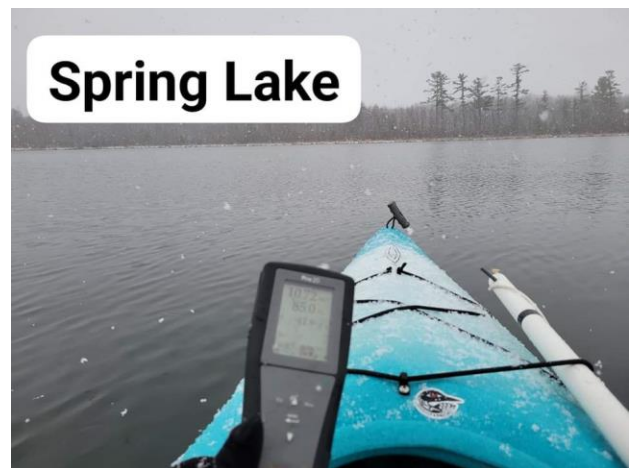
To WI DNR Surface Water Grant Committee:

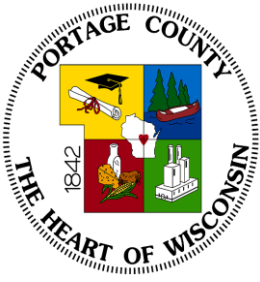
Deliverables from the 2021 Grant LPL177621, Portage County LCD-Connecting People to Their Lakes Thru Data Collection.

Project overview

Scott Provost stated, "Citizen involvement brings citizen ownership to their lakes." Portage County Land and Water Conservation purchased three YSI meters and paired each meter up with a Secchi disk that can be checked out by residents to collect data on their waterbodies. The eleven chosen lakes have a history of fish kills, or potential fish kills due to lake similarities. It is critical that these lakes be monitored by the citizens that live on or near them. With the data being collected and entered into the Surface Water Integrated Monitoring System (SWIMS), not only will Portage County benefit from the data but also the WI Department of Natural Resources and other natural resource professionals. The citizen collected data will assist resource professionals in painting an accurate, real-time picture of the chosen lakes and their behaviors.

"Connecting People to Their Lakes Through Data Collection" project has supplemented historical lake data collected for Lake Management Plans with a current baseline of beneficial lake data. This data will help in progressive updates to Lake Management Plans, allow County staff to spatially display water quality data at the count level, improved citizen understanding of Best Management Practices (BMPs) and develop an accepting environment of scientific data collection. The quality of Portage County Lakes and their ecosystems will greatly benefit from informed decisions being made from the citizen data collected through the "Connecting People to Their Lakes Through Data Collection" project.





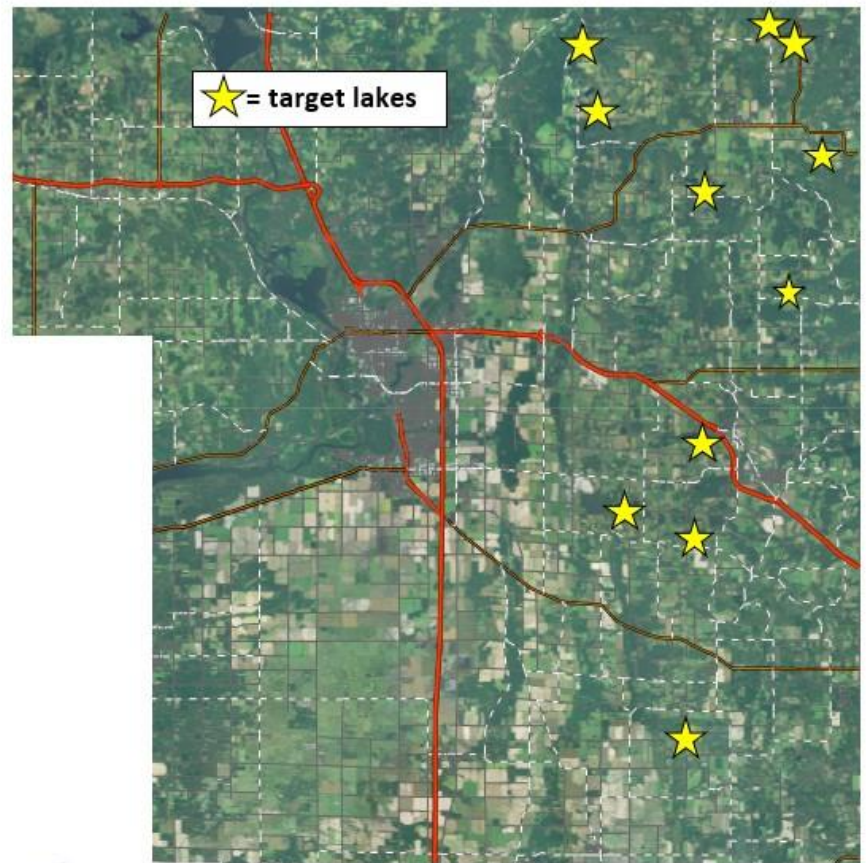
PLANNING AND ZONING DEPARTMENT

1462 STRONGS AVENUE, STEVENS POINT, WI 54481 • PHONE: 715-346-1334 • FAX: 715-346-1677

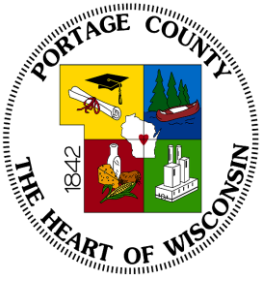
Lakes being monitored

Eleven lakes were included in the grant. Those lakes included: Lake Jacqueline, Tree Lake, Wolf Lake, Sunset Lake, Lime Lake, Lake Collins, Lake Emily, Penny Lake, South Twin Lake and Bear Lake. Citizen volunteers have been monitoring Lake Jacqueline, Lake Helen, Sunset Lake, Lake Emily and Tree Lake regularly. Land Conservation Staff covers Spring Lake, Springville Pond, Wolf Lake, Lime Lake, Lake Collins, and Bear Lake. County staff continues to reach out to citizens to monitor some of these lakes and we do have some citizen volunteers that cover some, but not on a regular basis. We have also continued to add Lakes being monitored by citizens since the grant started because of interest of the program. We have added Onland Lake and Adams Lake, both of which had very limited data available before the grant.

Portage County Surface Water Planning Grant Application
“Connecting People to Their Lakes Through Data Collection”



Lake Jacqueline (WBIC 987100)	Lake Collins (WBIC 270200)
Lake Helen (WBIC 287200)	Lake Emily (WBIC 189800)
Tree Lake (WBIC 289400)	Penny Lake (WBIC 195500)
Wolf Lake (WBIC 241100)	South Twin Lake (WBIC 1015300)
Sunset Lake (WBIC 199700)	Bear Lake (WBIC 181900)
Lime Lake (WBIC 190100)	



PLANNING AND ZONING DEPARTMENT

1462 STRONGS AVENUE, STEVENS POINT, WI 54481 • PHONE: 715-346-1334 • FAX: 715-346-1677

Calibration Records 2022-2024

Meter 1	Membrane/Solution changed	Calibrated	Meter 2	Membrane/Solution changed	Calibrated	Meter 3	Membrane/Solution changed	Calibrated
	1/6/2022	1/6/2022		1/6/2022	1/6/2022		1/6/2022	1/6/2022
	7/11/2022	7/11/2022		7/13/2022	7/13/2022		7/18/2022	7/18/2022
	1/4/2023	1/4/2023		1/4/2023	1/4/2023		1/4/2023	1/4/2023
	6/7/2023	6/7/2023		6/12/2023	6/12/2023		6/12/2023	6/12/2023
	1/4/2024	1/4/2024		1/4/2024	1/4/2024		1/4/2024	1/4/2024
	6/24/2024	6/24/2024		6/25/2024	6/25/2024		6/27/2024	6/27/2024

Current Use of Materials or Equipment

The program created with the grant continues to grow as word spreads. All three YSI meters are still currently in use by both citizen volunteers and County staff. During the peak ice off season, there is rarely a meter in the office because they are checked out by residents monitoring their waterbodies. Some citizen volunteers continue to monitor once ice is safe enough to walk on, which provides a glimpse of what the lake is doing during the quick months. It's so much fun watching the citizens pay attention to numbers and when they see something different ask about it and learn what the lake is telling us. All the data is entered in the SWIMS database either by County staff or citizens themselves. We have updated seven lake management plans in the last two years, all seven lakes are included in this grant. The lake data collected was used multiple times through out the update and citizen engagement during the process of these lake management plan updates. We are extremely pleased with how the program has increased understanding of Portage County waterbodies and continues to grow.

Tracy Arnold
tarnold@co.portage.wi.gov
 715-346-1334

