

HOSTED BY: NW WI FARMER WATERSHED COUNCILS



NW WI Farmer-led Regional Event

*Local Research Panel & How to
Improve Field Profit &
Management*

**Free
Lunch**

JAN 31, 2024 | 10 A.M. - 2 P.M.

PHOENIX BAR & GRILL | 2095 10TH AVE., BALDWIN



FEATURED SPEAKER

Lance Gunderson founding member
and President of Regen Ag Lab

RSVP BY JAN 26

Lunch will be provided



OR CONTACT TARA DAUN

tdaun@wisconsinfarmersunion.com

715-492-0329



LOCAL RESEARCH PANEL

Presentations on agronomic research
done in Northwest Wisconsin

SPONSORED BY:



COMPEER
FINANCIAL



Next Steps in Soil Health

Celebrating **10 years** of the Horse Creek Farmer-Led Council, the Carlsons will be hosting an educational event once again for farmers. Focused on local research, farmer experience, and networking.

MARCH 23RD, 2023

10:00 am - 1:00 pm

Lunch Included!

Carlson Family Farm

134 220th St

New Richmond, WI 54017

Please register with Tara

715-492-0329

tdaun@wisconsinfarmersunion.com

For more information

www.farmerledwatershed.org



Myron Sylling

MN Farmer talks N placement, testing and increasing yield while reducing inputs.



Local Research Results

With 8 years of trial data, presenters will review yield, infiltration, and soil health outcomes of the Horse Creek demo plots.

REGENERATIVE BEEF MANAGEMENT

Pastures Walk & BBQ

August 19th, 2024

FARM #1

**64 5th Street
Prairie Farm, WI**

Tour 4:30 - 6:00



FARM #2

**E977 State Road 64
Downing, WI**

**BBQ Starts at 6:30
Tour until 8:30**

Come to one or both farms to meet with other farmers to improve your farm's bottom line and shape the future of incentives available for graziers.

Questions call Tara: 715-492-0329



STOP 1:

**Vance Creek Angus
Prairie Farm, WI**

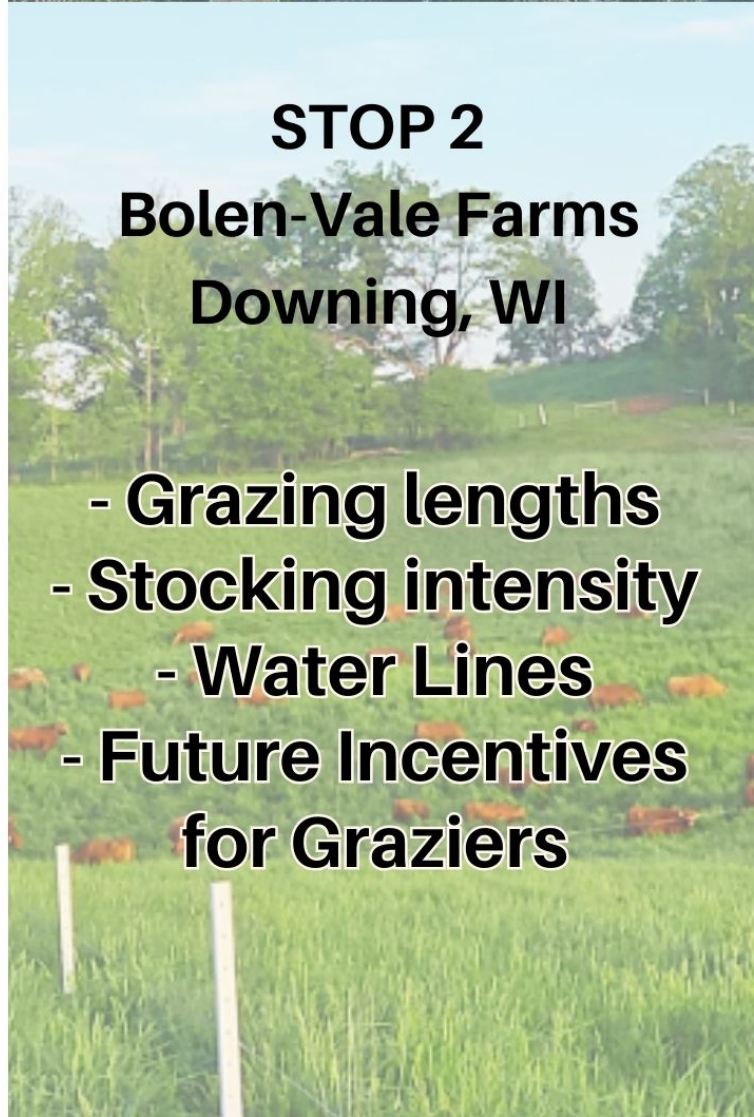
- Keeping customers connected
- Stream crossing control



STOP 2

**Bolen-Vale Farms
Downing, WI**

- Grazing lengths
- Stocking intensity
- Water Lines
- Future Incentives for Graziers



Aerially Seeded Rye

Spring Followup Field Event

April 13th 9:30 - 10:30 am New Richmond
County Road T & 160th



Planted mid-September 2021



2 weeks after planting



2 weeks after corn harvest

Come see what the rye
is doing now.

Above & **below** the soil.

Questions/RSVP,
call/text Tara @
715-492-0329



2023 Dry Run Farmer-Led Buffer Incentive:

- ✓ Pays \$650/acre
- ✓ Increase Field Profit
- ✓ Reduce Erosion

BBQ & BUFFERS

See Buffers & Eat Burgers

Tuesday 6/20 @ 6:00 pm

Erickson Farm
2237 County Road S
New Richmond, WI

A free BBQ to talk
field profits &
streambank buffer
options.

More details available
www.farmerledwatershed.org
facebook @ farmerlewatershed
RSVP contact Tara 715-492-0329

Dear Farmer and/or Landowner,

The Dry Run Farmer-Led Watershed Council is pleased to announce our incentive program for 2024 practices. Due to its effectiveness and popularity, we are continuing our buffer program and increasing the payment for the first acre.

In 2023 our farmers and cooperating landowners made quite an impact. Our council hosted 8 farmer events and our coordinator presented to thousands of non-farmers at the St. Croix Farm-City day and the Clean Water Forum about how farmers in our watershed are stewarding the land and water for the community. **Farmers in the watershed received just over \$19,000 of payments in 2023** for planting over 1600 acres of cover crops and converting less profitable stream-adjacent cropland to perennial roots. These practices kept over 530,000 pounds of soil on local fields and out of local ditches and the Dry Run stream.

This year, farmers in the area have agreed to expand the incentive options:

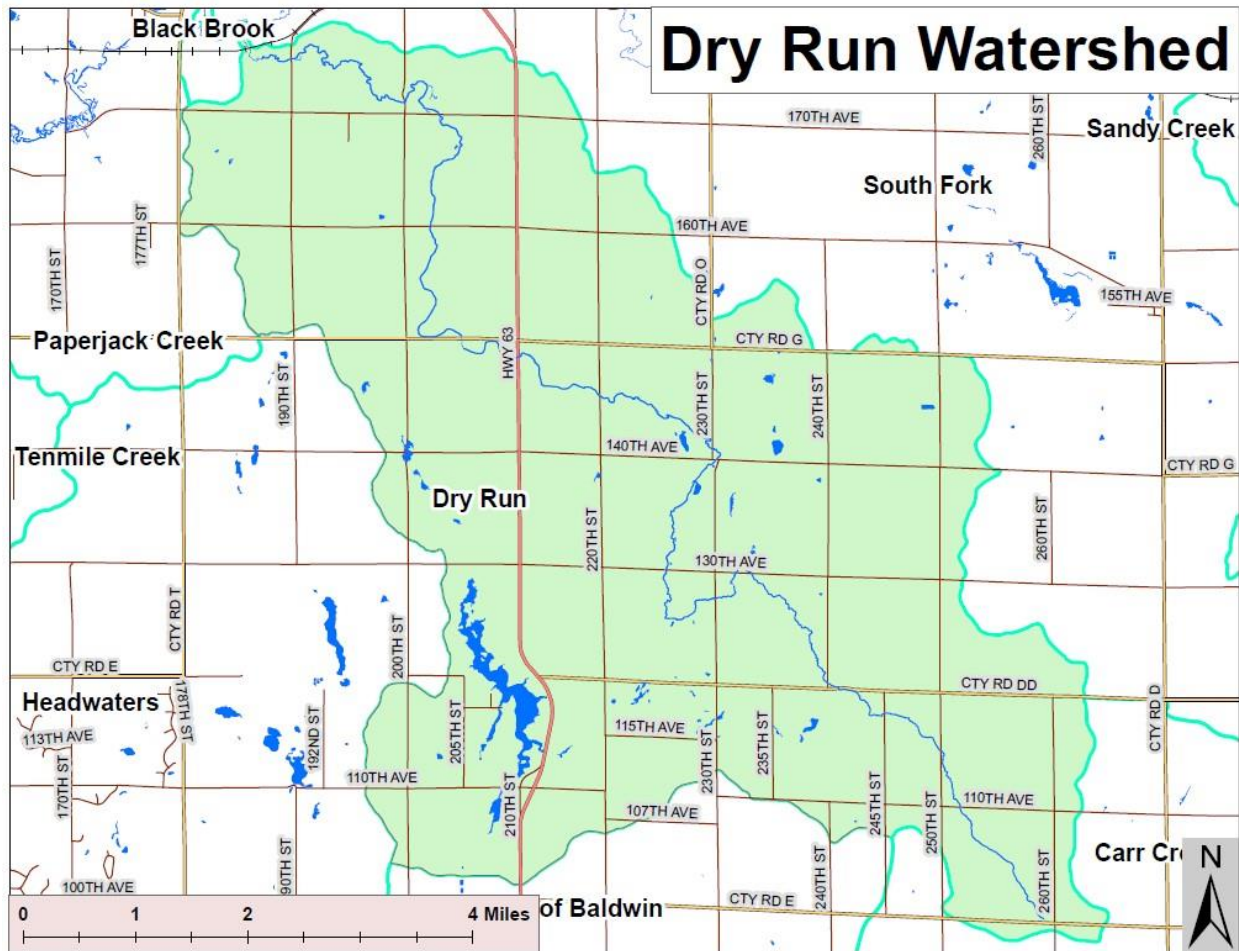
- The buffer incentive is still there for any cropland adjacent to the Dry Run with payment for the 1st acre increased to **\$1,000 per acre for the first acre** and \$650 for every acre after that. If there is another sensitive area you'd like to buffer (e.g., adjacent to a sinkhole), apply and we will review the site.
- There is also a higher payment rate for any farmer in the watershed who wants to try cover crops for the first time on 20 acres to see how well they perform.
 - If you are interested in providing more information including your USDA ID numbers, Farmers for Soil Health are able to provide \$25/acre for cover crops, upping your payment to \$55/acre for first-time 20 acres or \$35/acre for acres beyond the 1st 20 or for farmers with cover crop experience.
- A waterway payment for waterways installed without funding assistance from other sources of \$2/linear foot. Design & technical assistance available through St. Croix County.
- A flexible option for upgrading your equipment or management to cover costs up to \$1,000 per applicant. This could be to help with planter upgrades that will allow for reduced tillage or other potential practices you might be interested in that would improve your farm and soil health.

If you want to get signed up or have logistical questions, contact our coordinator, Tara Daun
715-492-0329 tdaun@wisconsinfarmersunion.com

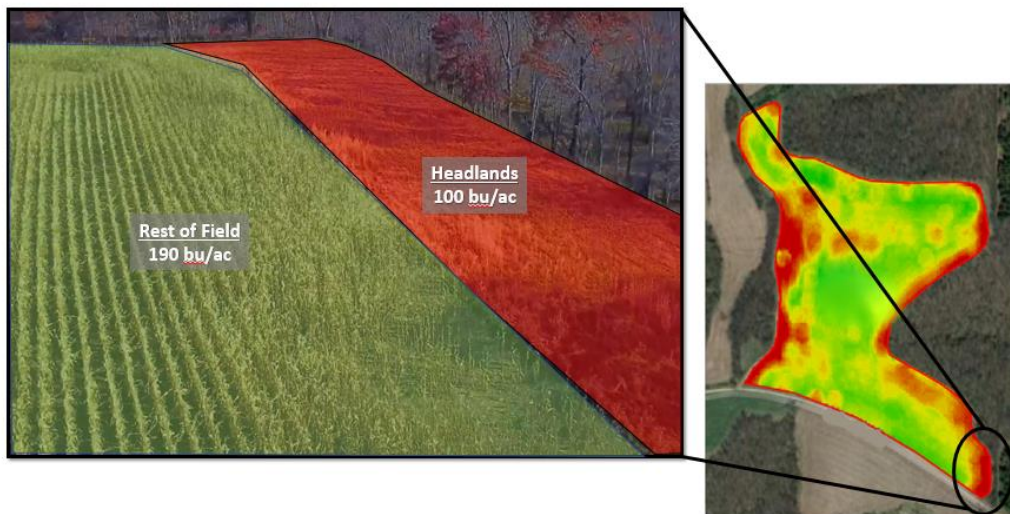
If you'd like to participate in the decision-making process of the Dry Run Farmer-Led Council, any farmers in or adjacent to the Dry Run watershed are welcome to come to meetings and have an equal say at the table as all farmers present. To learn about our next meeting, contact our coordinator, Tara Daun, or come to the Rooster Roadhouse at 11:00 on Wednesday February 21st.

Thank you for your time.





“Corn is not a good plan for brush control” – Farmer, Joe Bragger



Assuming \$550/acre in production costs before rent and \$4.60/bu of corn, these headlands lost the farmer \$90/acre last year. Putting them into a grass strip instead of corn reduces those losses and increases total farm profitability.

Name: _____

_____: **Stream-adjacent Cropland Buffer (\$1,000 for the first acre per applicant, \$650 for every acre after that)**

Location of proposed buffer: _____ (please provide address or Township, Range, Section location)

Estimated area: _____ feet along the waterway x _____ feet wide = _____ square feet

By receiving funds from this program, you are agreeing to maintain the area for which you are receiving payment in perennial cover after establishment in 2024 through the harvest season of 2026. If you till the site or plant a non-perennial crop before January 1st of 2027 you will be asked reimburse the Farmer-Led Watershed Council, all of the funds received for this buffer. No payments are guaranteed until site approved by the council or approved representative.

_____: **First-Time 20 acres Cover Cropper (\$30/acre)**

This incentive is for farmers who have not planted cover crops before. \$30 covers the cost of seed and termination so you can minimize risk of trying cover crops and have the opportunity to see the benefit to your farm.

Number of acres for fall-seeded cover crops: _____

Cover crop(s) species planted _____ rate _____ method of planting _____

____ Mark here if you're interested in providing additional information about your cover-cropped acres for Farmers for Soil Health, which is offering a total payment of \$50 per acre over three years (Year 1: \$25, Year 2: \$15, and Year 3: \$10).

_____: **Cover Crops (\$10/acre)**

Number of acres for fall-seeded cover crops: _____

Cover crop(s) species planted _____ rate _____ method of planting _____

_____: **Conservation Upgrade (up to \$1,000 per farm)**

Is there a practice you know you'd like to do but could use some funding to help get it done? This is a flexible option, but an example might be upgrading your planter to start no-tilling.

Activity you would use funding for: _____

_____: **Grassed Waterway Establishment (\$2/linear foot)**

Location of proposed waterway: _____ (please provide address or Township, Range, Section location)

Estimated length: _____ feet

Applicant Signature: _____ **DATE:** _____

By applying for incentive payment for these activities you are agreeing that you are not receiving incentive payments for the same activity on the same acres from another program (e.g., NRCS). This program is developed to assist in adoption of new conservation practices and reduce risk to farmers for the first three years of implementing the practice on each field. It is not meant to subsidize responsible management indefinitely. By signing below, you agree that you will not apply for incentive funds to pay for the same practice on the same acres for a fourth year.

A picture of this form filled out can be emailed to tdaun@wisconsinfarmersunion.com or mailed back to

St. Croix County Land & Water Conservation Department
1960 8th Avenue, Suite 140
Baldwin, WI 54002



This program is completely voluntary and funded by the Dry Run Farmer-Led Watershed Council. Funding is provided by a Wisconsin Farmers Union water quality grant and our incentive program is supported through a grant with the Department of Agriculture, Trade & Consumer Protection. We are partnering with the St. Croix County Land and Water Department for technical expertise and resources.



www.farmerledwatershed.org

facebook.com/farmerledwatershed

Focus on Buffers

What's a buffer?

An area of perennial roots that catches nutrients and sediment. Ideal places are where crop growth is poor due to frequent flooding, poor edge rows shaded by trees.

Increase Profits

It's estimated that about 10% of corn acres earn less than they cost to grow in our region. Buffers turn losing acres into increased overall profit.

Soil Health & Erosion Control

Perennial roots control erosion. A 35 foot buffer reduces erosion by 70% (keeping 2,000 pounds of soil per acre above the buffer over 3 years).

Farmers on the Dry Run council find buffers to be the BEST first step into soil health protection. Because of this, we provide big payments for buffer zones. See enclosed application.

Not sure what a buffer would look like? Take a look at some local buffers within the area (see map on reverse for tour sites).

Focus on Buffers

What's a buffer?

An area of perennial roots that catches nutrients and sediment. Ideal places are where crop growth is poor due to frequent flooding, poor edge rows shaded by trees.

Increase Profits

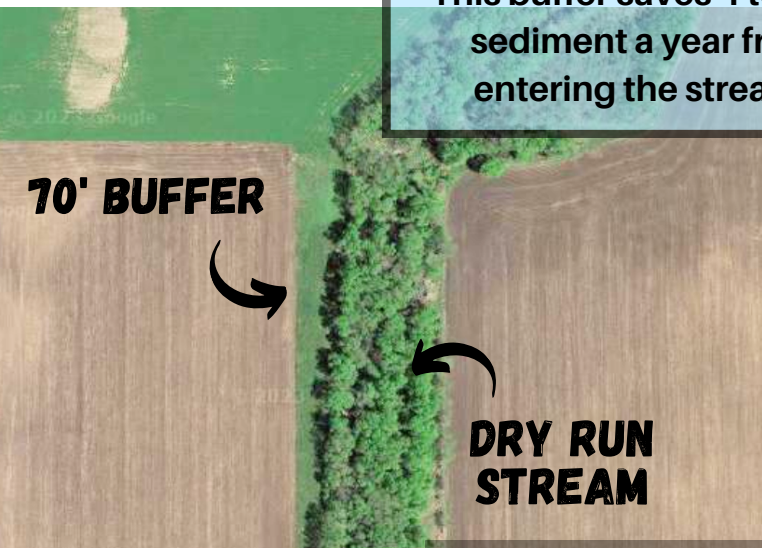
It's estimated that about 10% of corn acres earn less than they cost to grow in our region. Buffers turn losing acres into increased overall profit.

Soil Health & Erosion Control

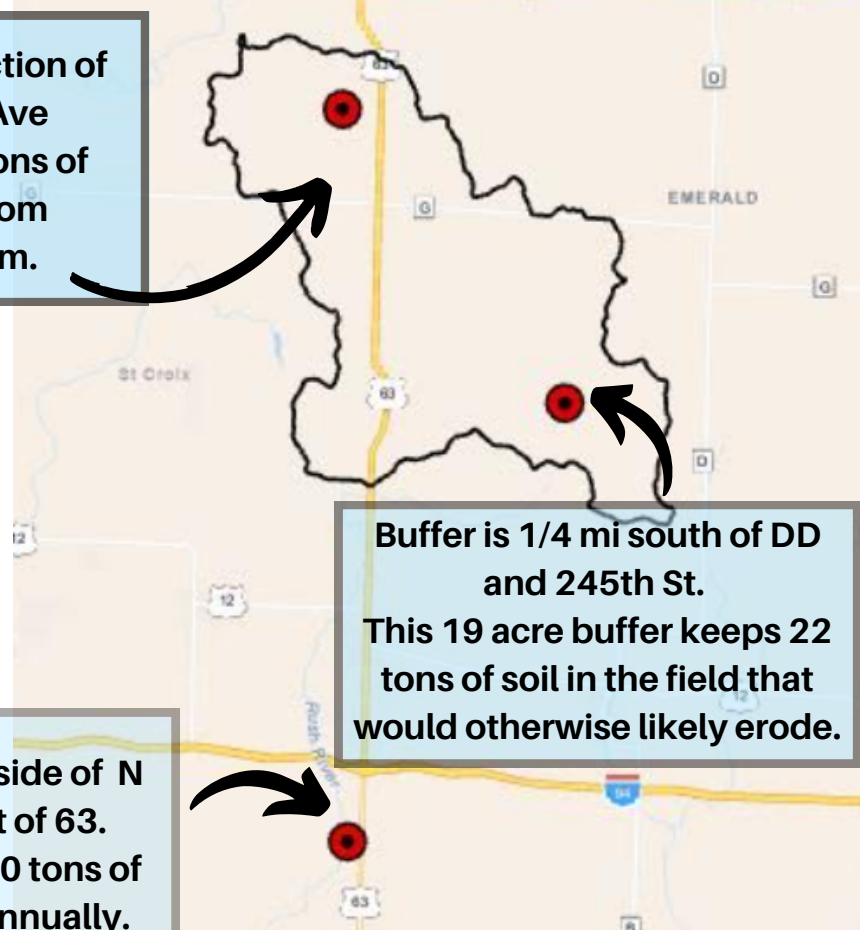
Perennial roots control erosion. A 35 foot buffer reduces erosion by 70% (keeping 2,000 pounds of soil per acre above the buffer over 3 years).

Farmers on the Dry Run council find buffers to be the BEST first step into soil health protection. Because of this, we provide big payments for buffer zones. See enclosed application.

Not sure what a buffer would look like? Take a look at some local buffers within the area (see map on reverse for tour sites).

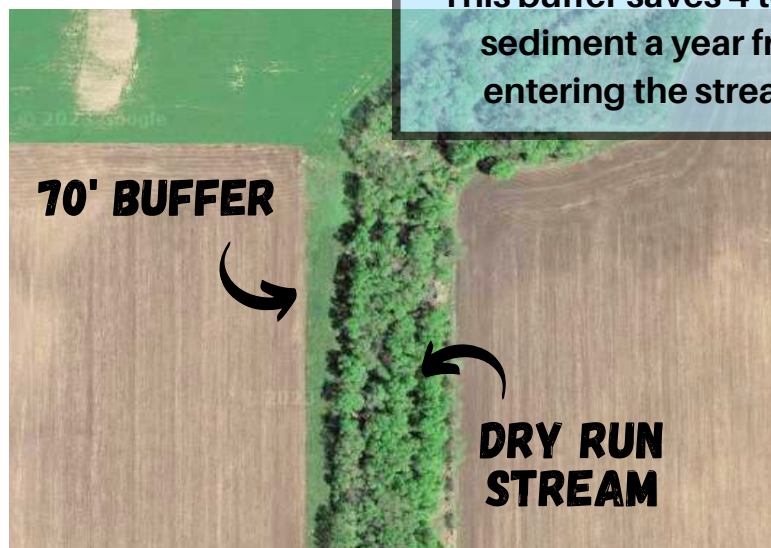


Look north @ intersection of
200th St & 160th Ave
This buffer saves 4 tons of
sediment a year from
entering the stream.

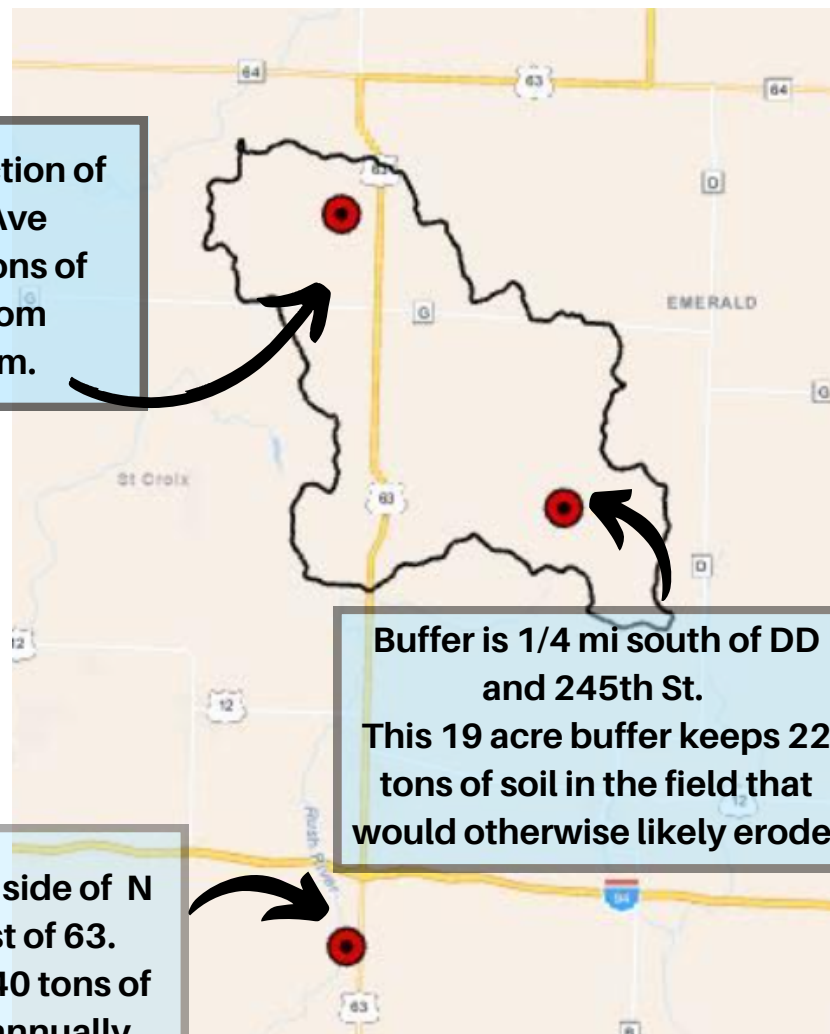


Buffer is 1/4 mi south of DD
and 245th St.
This 19 acre buffer keeps 22
tons of soil in the field that
would otherwise likely erode.

Look on the south side of N
just 1/4 mile west of 63.
This buffer saves 40 tons of
soil from erosion annually.



Look north @ intersection of
200th St & 160th Ave
This buffer saves 4 tons of
sediment a year from
entering the stream.



Buffer is 1/4 mi south of DD
and 245th St.
This 19 acre buffer keeps 22
tons of soil in the field that
would otherwise likely erode

Look on the south side of N
just 1/4 mile west of 63.
This buffer saves 40 tons of
soil from erosion annually.

FARMER LEARNING LUNCH



FEATURING RICK CLARK

PHOENIX BAR & GRILL
2095 10TH AVE BALDWIN

MARCH 10TH

11:00 - 1:00

Meet corn and soybean farmer, Rick Clark, who farms 7,000 acres in Indiana. Rick clearly lays out his system of increasing farm profit while controlling his input costs by improving soil resilience & health.

"We had zero yield change, but **we saved \$35 to \$45 an acre on chemicals.**"

- Control input costs
- Simple spreadsheet views on revenue analysis
- How to improve soil health for profitability

Lunch Included



To help us plan for lunch, **please register** online or contact Tara by phone or email.

715-492-0329

tdaun@wisconsinfarmersunion.com



HAY RIVER AREA WATERSHEDS

