

**WDNR Grant #LPT79423**

Elkhart Lake Improvement Association

Elkhart Lake Water Quality & Habitat Improvement Project – Prairie Restoration

Final Report: December 31, 2024

**Grant Cycle: March 15, 2023 to December 31, 2024**

The scope of work defined in this grant is a joint effort coordinated by the Elkhart Lake Improvement Association (ELIA), in partnership with Wisconsin Department of Natural Resources (WDNR), and Glacial Lakes Conservancy (GLC). Landmark Landscapes and Stantec were selected as contractors to support the restoration efforts. Landowners selected contractors based on ongoing relationships/projects, and contracted directly with the contractors. The following represents grant activities completed as of December 31, 2024.

**Goal 1a. Site Preparation for Seeding on the Schaff Property**

Alice and Peter Schaff contracted Stantec to prepare 25 acres previously farmed property for prairie seeding. Broadcast herbicide treatments were performed in June 2023, early August 2023, September 2023 and October 2023. The October mobilization was intended to kill off farmer's failed soybean crop and associated weed growth and was not initially planned as part of the original scope.

**Goal 1b. Native Seed Installation on the Schaff Property**

Stantec completed native seed installation within the previously treated areas (Phase 2). Prairie seed was installed using a tractor mounted seed drill in May of the 2024 growing season. Seed was procured with support from Pheasants Forever and NRCS, both funding partners on the project. Seeding areas are shown on the attached *Figure 1. Seed Mixes* are also attached for reference.

**Goal 1c. Native Tree Planting on the Schaff Property**

Native oak trees were planted in designated areas in Phase 1 and Phase 2 in late Fall 2024. Oak planting locations are shown on the attached *Figure 2*.

**Goal 1d. Schaff Property & Grasshopper Hill Management Mowing and Herbicide Spot Treatments**

- Mowing and invasive species spot treatments (focused on garlic mustard and dame's rocket) in Phase 1 at the Schaff Property were completed in June 2023, by Stantec.
- Spot treatments in Phase 1 and mowing in Phase 2 at the Schaff Property were completed in June 2024.
- Mowing of Phase 2 at the Schaff Property occurred in July 2024.
- During each mowing event, vegetation was mowed to 8 inches in areas that were accessible via tractor. Brush cutters were used to mow steeper areas.
- Spot treatments targeting wild parsnip and spotted knapweed were also completed during the July site visit.
- Additional selective mowing and spot treatments were completed in September 2024.

- Mowing was completed at Grasshopper Hill in June and September 2023, and again in June 2024 by Landmark Landscapes. GLC completed spot treatments in 2024.
- A *Photo Log* depicting 2023-2024 prairie conditions is attached for reference.
- Maintenance at both sites will continue in 2025 and beyond.

### **Goal 1e. Monitoring and Management**

In 2022, ELIA funded a Comprehensive Lake Management Planning (CLMP) effort to evaluate historic data combined with recent public survey feedback to make recommendations for implementation of projects within the watershed that would elevate and maintain water quality in Elkhart Lake. This project was identified in the CLMP to significantly improve watershed resiliency and lake water quality. Modeling results indicate that conversion of this 25-acre parcel of cropland to prairie will reduce phosphorus loadings by 781 lbs/yr (40% of all phosphorus runoff from cropland in the Elkhart Lake watershed). Permanent conversion also provides increased wildlife habitat for birds, bats, and pollinators, including state and federally listed species which are known to occur in the area. This project, in combination with the adjacent Grasshopper Hill will protect a large complex of conservation land.

Monitoring of both the Schaff and Grasshopper Hill prairies are ongoing and will continue into the future to help maintain nutrient reductions and habitat in the watershed. An adaptive management approach will guide the establishment of diverse native plant communities at each property. Additionally, water quality monitoring in downstream Elkhart is ongoing and will continue to help monitor phosphorus and suspended solids loading in Elkhart Lake. 2023 and 2024 samples will provide a baseline for future monitoring, as this project establishes, and others are initiated in the watershed (see attached *Simple Lab Reports*).

### **Goal 2a. Education and Outreach**

ELIA hosted annual meetings in June 2023 and June 2024 and the Ecology Committee presented the project to members (see attached *Minutes*). The project was also highlighted at an October 2024 watershed partner event (see attached *Powerpoint Presentation*).

ELIA, in partnership with GLC, will continue education and outreach within the local community and host an educational field day in late 2024 to inform community members on the benefits of ecological restoration and their direct correlation with water quality improvement and climate resiliency.

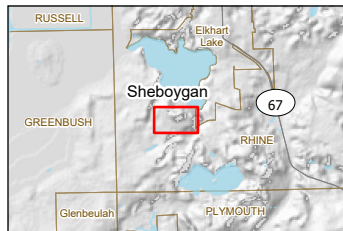
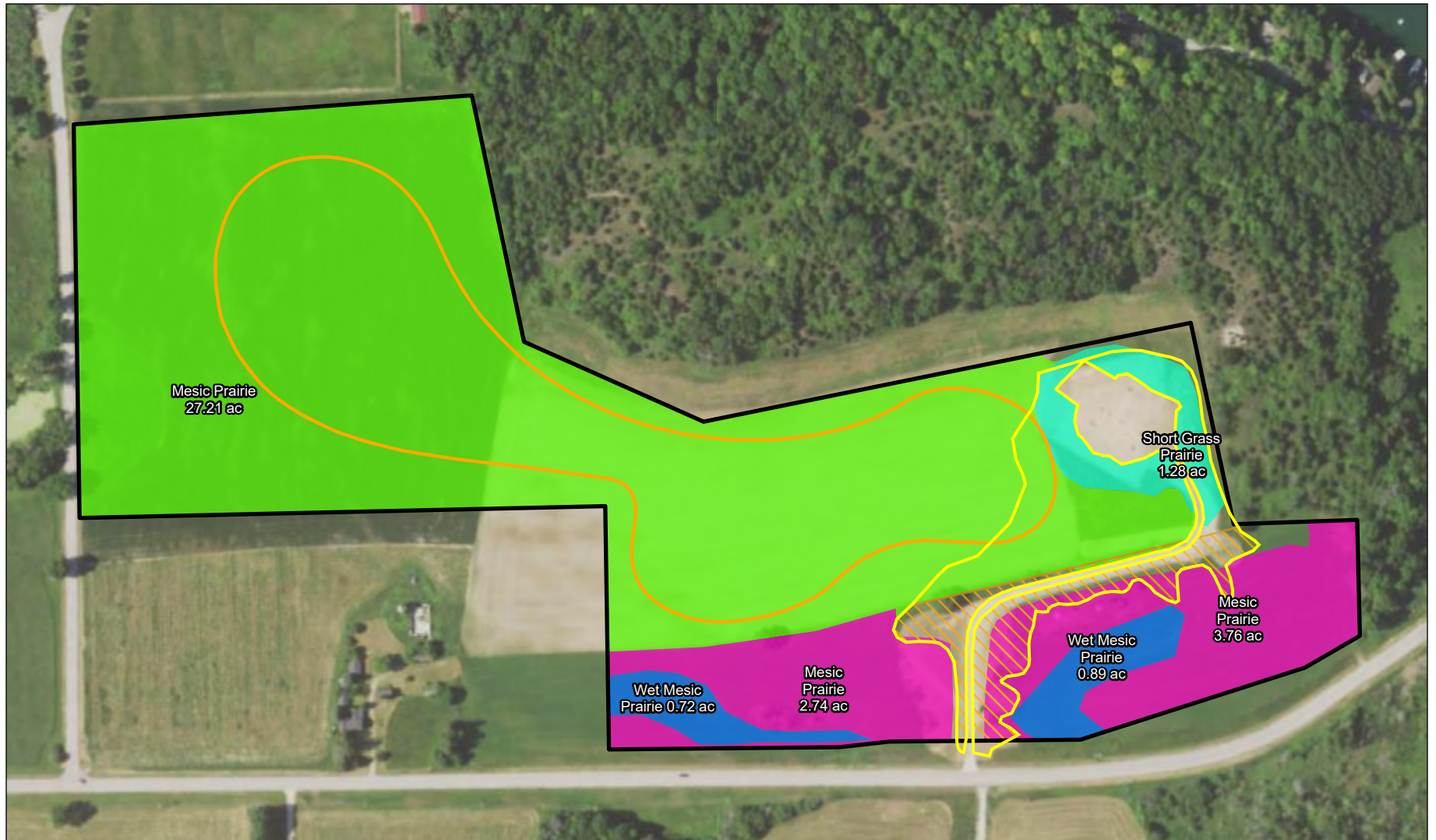
### **Supplemental Funding**

The Schaff portion of the project is partially funded by the NRCS EQIP program, which supported site prep and seeding for the 25-acre prairie installation. Further funding support was offered by Pheasants Forever and the Sheboygan County Conservation Association.

### **Attachments**

*Figure 1, Seed Mixes, Figure 2, Photo Log, Simple Lab Reports, Annual Meeting Minutes, Watershed Stakeholder Event PPT*

V:\1937\Active\193708457\03\_data\gis\mxds\Seeding\Schaff\_Property.aprx Revised: 2024-05-20 By: aswalm



#### Legend

- Project Boundary
- Trail
- Newly Graded Areas

#### Seeding

- Mesic Prairie (Phase I)
- Wet Mesic Prairie (Phase I)
- Mesic Prairie (Phase II)
- Short Grass Prairie
- Phase I Re-Seeding Area



#### Notes

1. Coordinate System: NAD 1983 StatePlane Wisconsin South FIPS 4803 Feet
2. Data Sources: Stantec, NADS, USGS, WisDOT
3. Orthophotography: NAIP 2022



0 150 300 Feet  
(At original document size of 8.5x11)  
1:3,600

Project Location  
T. of Rhine,  
Sheboygan Co., WI

Prepared by AIS on 2024-05-20  
TR by JS on 2024-05-20  
IR by SM on 2024-05-20

Client/Project  
Schaff Property  
Seeding Plan

193708457

Figure No.

1

Title

**Schaff Seeding Areas**



## WI Schaff Mesic Prairie - Phase 1

2023

Questions??? Visit: [www.PFHabitatStore.com](http://www.PFHabitatStore.com) or call: 866-914-7373

Common Name	Scientific Name	Seeds/#	#/ac	oz/ac	Seeds/ft2	#N/A	Bloom	Monarch	Moisture
Big Bluestem	Andropogon gerardii	165,000	0.5	8	1.89	3.67%	M	0	WM-D
Common Milkweed	Asclepias syriaca	64,000	0.6	9.6	0.88	1.71%	M-L	1	M-DM
Butterfly Milkweed	Asclepias tuberosa	55,680	0.0875	1.4	0.11	0.22%	M	1	M-D
Canada Milkvech	Astragalus canadensis	255,360	0.1625	2.6	0.95	1.85%	M	0	WM-M
Wild White Indigo	Baptisia alba	25,360	0.0625	1	0.04	0.07%	M	0	WM-DM
Sideoats Grama	Bouteloua curtipendula	127,000	1	16	2.92	5.65%	M	0	M-D
Partridge Pea	Chamaecrista fasciculata	60,800	0.5	8	0.70	1.35%	M-L	0	M-D
White Prairie Clover	Dalea candida	253,600	0.0875	1.4	0.51	0.99%	M	1	M-D
Purple Prairie Clover	Dalea purpurea	319,200	0.0875	1.4	0.64	1.24%	E-L	0	M-D
Purple Coneflower	Echinacea purpurea	105,600	0.0875	1.4	0.21	0.41%	M	0	M-D
Canada Wildrye	Elymus canadensis	83,200	2	32	3.82	7.41%	E	0	WM-DM
Virginia Wildrye	Elymus virginicus	67,200	0.5	8	0.77	1.50%	E	0	W-M
False Sunflower	Heliopsis helianthoides	103,680	0.3	4.8	0.71	1.38%	M-L	0	M
Rough Blazingstar	Liatris aspera	215,520	0.0875	1.4	0.43	0.84%	L	1	M-D
Wild Bergamot	Monarda fistulosa	1,244,800	0.13125	2.1	3.75	7.27%	M-L	1	WM-DM
Stiff Goldenrod	Oligoneuron rigidum	733,600	0.125	2	2.11	4.08%	L	1	M-D
Switchgrass (VNS)	Panicum virgatum	389,000	0.5	8	4.47	8.66%	M	0	W-D
Large Beardtongue	Penstemon grandifloris	224,000	0.0875	1.4	0.45	0.87%	M	0	DM
Prairie Cinquefoil	Potentilla arguta	3,200,000	0.01875	0.3	1.38	2.67%	M-L	0	M-D
Grayheaded Coneflower	Ratibida pinnata	431,040	0.25	4	2.47	4.80%	M-L	0	WM-D
Black-eyed Susan	Rudbeckia hirta	1,593,600	0.1625	2.6	5.94	11.53%	M-L	1	WM-D
Little Bluestem	Schizachyrium scoparium	240,000	1	16	5.51	10.68%	M	0	M-D
Rosinweed	Silphium integrifolium	63,840	0.15625	2.5	0.23	0.44%	M-L	1	WM-DM
Indiangrass	Sorghastrum nutans	192,000	0.5	8	2.20	4.27%	M	0	W-D
Smooth Blue Aster	Symphyotrichum laeve	765,280	0.0625	1	1.10	2.13%	L	0	WM-DM
New England Aster	Symphyotrichum novae-angliae	1,118,400	0.0875	1.4	2.25	4.36%	L	0	WM-M
Sky Blue Aster	Symphyotrichum oolentangiense	1,312,000	0.07225	1.156	2.18	4.22%	L	0	M-D
Hoary Vervain	Verbena stricta	512,000	0.1625	2.6	1.91	3.70%	M-L	0	DM-D
Golden Alexander	Zizia aurea	176,000	0.1625	2.6	0.66	1.27%	E	0	W-M
0	Pedicularis canadensis	528,000	0.03125	0.5	0.38	0.73%	E	0	M-D

	N	#	Oz	seeds/ft2	%plsforb	%plstot
Milkweed	2	0.6875	11	0.99	3.3%	1.9%
Monarch	8	1.4375	23	13.97	46.6%	27.1%

Bloom	Early+	Mid	Mid-Late	Late	Unspec
n	14	11	9	5	0
seeds/ft2	6.268	19.260	17.979	8.059	0.000
%forbseeds	12.2%	37.4%	34.9%	15.6%	0.0%

	n	#	oz	%#	seeds/ft2	%pls
Grass	7	6	96	62.7%	21.579	41.8%
Flower	23	3.57225	57.156	37.3%	29.987	58.2%
Total	30	9.57225	153.156	100.0%	51.566	100.0%
Forb	18	2.67225	42.756	0.0%	27.149	0.0%
Legume	5	0.9	14.4	0.0%	2.837	0.0%
Shrub	0	0	0	0.0%	0.000	0.0%





## WI Schaff Wet Mesic Prairie - Phase 1

2023

Questions??? Visit: [www.PFHabitatStore.com](http://www.PFHabitatStore.com) or call: 866-914-7373

Common Name	Scientific Name	Seeds/#	#/ac	oz/ac	Seeds/ft2	#N/A	Bloom	Monarch	Moisture
Nodding Wild Onion	Allium cernuum	122,880	0.0625	1	0.18	0.37%	M	0	M-DM
Big Bluestem	Andropogon gerardii	165,000	0.38	6.08	1.44	3.03%	M	0	WM-D
Common Milkweed	Asclepias syriaca	64,000	0.3125	5	0.46	0.97%	M-L	1	M-DM
Canada Milkvech	Astragalus canadensis	255,360	0.0625	1	0.37	0.77%	M	0	WM-M
Wild White Indigo	Baptisia alba	25,360	0.03125	0.5	0.02	0.04%	M	0	WM-DM
Fox Sedge	Carex vulpinoidea	1,599,520	0.09	1.44	3.30	6.96%	E	0	W-WM
Lanceleaf Coreopsis	Coreopsis lanceolata	384,000	0.03125	0.5	0.28	0.58%	E-M	1	DM-D
Canada Wildrye	Elymus canadensis	83,200	0.5	8	0.96	2.01%	E	0	WM-DM
Virginia Wildrye	Elymus virginicus	67,200	1.5	24	2.31	4.87%	E	0	W-M
Rattlesnake Master	Eryngium yuccifolium	127,680	0.125	2	0.37	0.77%	M-L	1	WM-DM
Common Boneset	Eupatorium perfoliatum	2,560,000	0.03125	0.5	1.84	3.87%	M-L	1	W-WM
Spotted Joe-Pye Weed	Eutrochium maculatum	1,520,000	0.02	0.32	0.70	1.47%	M-L	1	W
Sneezeweed	Helenium autumnale	2,080,000	0.03125	0.5	1.49	3.14%	M-L	0	W-WM
Sawtooth Sunflower	Helianthus grosseserratus	240,000	0.090625	1.45	0.50	1.05%	M-L	1	W-D
False Sunflower	Heliopsis helianthoides	103,680	0.1875	3	0.45	0.94%	M-L	0	M
Great St Johns Wort	Hypericum ascyron	3,200,000	0.03125	0.5	2.30	4.83%	M	0	WM-M
Prairie Blazingstar	Liatris pycnostachya	191,520	0.1875	3	0.82	1.74%	M-L	1	WM-D
Great Blue Lobelia	Lobelia siphilitica	8,000,000	0.01875	0.3	3.44	7.25%	M-L	1	W
Wild Bergamot	Monarda fistulosa	1,244,800	0.125	2	3.57	7.52%	M-L	1	WM-DM
Stiff Goldenrod	Oligoneuron rigidum	733,600	0.0625	1	1.05	2.22%	L	1	M-D
Switchgrass (VNS)	Panicum virgatum	389,000	0.5	8	4.47	9.40%	M	0	W-D
Foxglove Beardtongue	Penstemon digitalis	1,840,000	0.03125	0.5	1.32	2.78%	E-M	0	WM-M
Mountain Mint	Pycnanthemum virginianum	3,520,000	0.0125	0.2	1.01	2.13%	M-L	0	W-DM
Black-eyed Susan	Rudbeckia hirta	1,593,600	0.125	2	4.57	9.63%	M-L	1	WM-D
Sweet Black-eyed Susan	Rudbeckia subtomentosa	733,600	0.0625	1	1.05	2.22%	M-L	0	WM-DM
Cup Plant	Silphium perfoliatum	22,400	0.125	2	0.06	0.14%	M-L	1	W-M
Prairie Dock	Silphium terebinthinaceum	17,760	0.125	2	0.05	0.11%	M-L	0	WM-DM
New England Aster	Symphyotrichum novae-angliae	1,118,400	0.03125	0.5	0.80	1.69%	L	0	WM-M
Blue Vervain	Verbena hastata	1,488,000	0.0625	1	2.13	4.50%	M-L	0	W-WM
Culver's Root	Veronicastrum virginicum	12,000,000	0.01875	0.3	5.17	10.88%	M	0	W-M
Golden Alexander	Zizia aurea	176,000	0.25	4	1.01	2.13%	E	0	W-M

	N	#	Oz	seeds/ft2	%plsforb	%plstot
Milkweed	1	0.3125	5	0.46	1.3%	1.0%
Monarch	12	1.254375	20.07	17.66	50.5%	37.2%

	Bloom	Early+	Mid	Mid-Late	Late	Unspec
n	22	7	16	2	0	
seeds/ft2	9.179	13.926	22.524	1.855	0.000	
%forbseeds	19.3%	29.3%	47.4%	3.9%	0.0%	

	n	#	oz	%#	seeds/ft2	%pls
Grass	5	2.97	47.52	56.8%	12.478	26.3%
Flower	26	2.254375	36.07	43.2%	35.006	73.7%
Total	31	5.224375	83.59	100.0%	47.484	100.0%
Forb	24	2.160625	34.57	0.0%	34.621	0.0%
Legume	2	0.09375	1.5	0.0%	0.385	0.0%
Shrub	0	0	0	0.0%	0.000	0.0%



## WI Schaff Mesic Prairie - Phase 2

2024

Questions??? Visit: [www.PFHabitatStore.com](http://www.PFHabitatStore.com) or Call: 866-914-7373

Common Name	Scientific Name	Seeds/#	#/ac	oz/ac	Seeds/ft2	%plsMix	Moisture	Bloom	Monarch
Bluestem, Big (VNS)	Andropogon gerardii	165,000	0.5000	8.00	1.894	3.72%	0.01111	0.01	0
Sideoats grama (local, vns)	Bouteloua curtipendula	127,000	0.5000	8.00	1.458	2.87%	0.00111	0.01	0
Wildrye, Canada (VNS)	Elymus canadensis	83,200	1.2000	19.20	2.292	4.51%	0.0111	0.1	0
Wildrye, Virginia (cool season)	Elymus virginicus	67,200	0.2000	3.20	0.309	0.61%	0.111	0.1	0
Switchgrass (VNS)	Panicum virgatum	389,000	0.4000	6.40	3.572	7.02%	0.11111	0.01	0
Bluestem, Little (VNS)	Schizachyrium scoparium	240,000	1.4500	23.20	7.989	15.70%	0.00111	0.01	0
Indiangrass (local or vns)	Sorghastrum nutans	192,000	0.5000	8.00	2.204	4.33%	0.11111	0.01	0
Milkvetch, Canada	Astragalus canadensis	255,360	0.1625	2.60	0.953	1.87%	0.011	0.01	0
Indigo, White Wild	Baptisia alba	25,360	0.0625	1.00	0.036	0.07%	0.0111	0.01	0
Partridge Pea	Chamaecrista fasciculata	60,800	0.5000	8.00	0.698	1.37%	0.00111	0.011	0
Prairie Clover, White	Dalea candida	253,600	0.0875	1.40	0.509	1.00%	0.00111	0.01	0
Prairie Clover, Purple	Dalea purpurea	319,200	0.0875	1.40	0.641	1.26%	0.00111	0.111	0
Milkweed, Common	Asclepias syriaca	64,000	0.6000	9.60	0.882	1.73%	0.0011	0.011	0
Milkweed, Butterfly (Butterflyweed)	Asclepias tuberosa	55,680	0.0875	1.40	0.112	0.22%	0.00111	0.01	0
Coneflower, Purple	Echinacea purpurea	105,600	0.0875	1.40	0.212	0.42%	0.00111	0.01	0
Sunflower, False (Oxeye)	Heliopsis helianthoides	103,680	0.3000	4.80	0.714	1.40%	0.001	0.011	0
Blazingstar, Rough (Tall, Button)	Liatris aspera	215,520	0.0875	1.40	0.433	0.85%	0.00111	0.001	0
Bergamot, Wild (Prairie Beebalm)	Monarda fistulosa	1,244,800	0.1313	2.10	3.751	7.37%	0.0111	0.011	0
Goldenrod, Stiff (Rigid)	Oligoneuron rigidum	733,600	0.1250	2.00	2.105	4.14%	0.00111	0.001	0
Wood Betony	Pedicularis canadensis	528,000	0.0313	0.50	0.379	0.74%	0.00111	0.1	0
Beardtongue, Large (shell leaf)	Penstemon grandifloris	224,000	0.0875	1.40	0.450	0.88%	0.0001	0.01	0
Cinquefoil, prairie (potentilla)	Potentilla arguta	3,200,000	0.0188	0.30	1.377	2.71%	0.00111	0.011	0
Coneflower, Grayheaded (Yellow)	Ratibida pinnata	431,040	0.2500	4.00	2.474	4.86%	0.01111	0.011	0
Susan, Black-eyed	Rudbeckia hirta	1,593,600	0.1625	2.60	5.945	11.69%	0.01111	0.011	0
Rosinweed	Silphium integrifolium	63,840	0.1563	2.50	0.229	0.45%	0.0111	0.011	0
Goldenrod, Showy	Solidago speciosa	1,520,000	0.0625	1.00	2.181	4.29%	0.00111	0.001	0
Aster, New England	Symphyotrichum novae-angliae	1,118,400	0.0875	1.40	2.247	4.42%	0.011	0.001	0
Aster, Sky Blue (Azure)	Symphyotrichum oolentangiense	1,312,000	0.0750	1.20	2.259	4.44%	0.00111	0.001	0
Vervain, Hoary	Verbena stricta	512,000	0.1625	2.60	1.910	3.75%	0.00011	0.011	0
Alexander, Golden	Zizia aurea	176,000	0.1625	2.60	0.657	1.29%	0.111	0.1	0

	n	#	oz	%#	seeds/ft2	%pls
Grass	7	4.750	76.00	57.06%	19.717	38.76%
Flower	23	3.575	57.20	42.94%	31.153	61.24%
Total	30	8.325	133.20	100.00%	50.870	100.00%
Forb	18	2.675	42.80		28.315	
Legume	5	0.900	14.40		2.837	
Shrub	0	0.000	0.00		0.000	

	Bloom	Early+	Mid	Mid-Late	Late	Unspec	Total
n		14	11	9	5	0	39
seeds/ft2		4.277	19.389	17.979	9.224	0.000	50.870
%forbseeds		13.73%	62.24%	57.71%	29.61%	0.00%	163.29%

	N	#	oz	seeds/ft2	%plsforb	%plstot
Milkweed	2	0.6875	11	0.993388	0.031888	0.019528
Monarch	0	0	0	0	0	0

Figure 2 - Schaff Tree Planting Locations, Elkhart Lake WI



- Existing Tree
- Proposed Oak Tree



Phase 1 – August 2023 (Year 1)



View of east half of Phase 1, facing east from driveway.



View of west portion of Phase 1, facing west from driveway.  
(Inset: Partridge Pea)



Phase 1 – October 2023 (Year 1)



Representative view of late season growth in Phase 1.

Phase 1 – April 2024 (Year 2)



View of north edge of Phase 1, facing southeast along hillside.





View of early season growth in west portion of Phase 1, facing northeast.



View of early season growth in east portion of Phase 1, facing east.



Phase 1 – June 2024 (Year 2)



View of north edge of Phase 1, facing southwest along hillside.



View of Phase 1 and blooming Large Beardtongue, facing west from driveway.





View of Phase 1, facing north from County Highway A.



View of Phase 1, facing north from County Highway A.

Phase 2 – July 2024 (Year 2)



Representative view of Phase 1 featuring Canada Wild Rye, Black eyed Susan, Hoary Vervain, and Grey-headed Coneflower.



Phase 2 – August 2023 (pre-site prep)



View of west edge of Phase 2, facing east from Shoreland Road.



View of east end of Phase 2, facing north.



Phase 2 – October 2023 (post-site prep)



View of Phase 2, facing east along the north edge of the property.



View of soybean planting at west end of Phase 2. Soybeans were planted, but were not maintained or harvested in 2023.



Phase 2 - April 2024 (pre-seeding)



View of west end of Phase 2, facing northeast from Shoreland Road.



View of east end of Phase 2, facing east.



View of central portion of Phase 2, facing west.



Phase 2 – June 2024 (Year 1)



View of Phase 2 approximately 1 month following drill seeding, facing east from Shoreland Road.



View of Phase 2 approximately 2 month following drill seeding, facing northwest from north edge of Phase 1.



Phase 2 – July 2024 (Year 1)



Representative view of Phase 2 featuring Oat cover crop, Partridge Pea and Black Eyed Susan.



Phase 2 – August 2024 (Year 1)



View of Phase 2, facing south from north edge of east end near Shoreland Road.

## CLIENT INFORMATION

**Client:** Keep Elkhart Blue Elia  
**Requested On:** Jul 13, 2023  
**Phone:** 3106256248  
**Email:** [keepelkhartblue@gmail.com](mailto:keepelkhartblue@gmail.com)

[hello@gosimplelab.com](mailto:hello@gosimplelab.com)

**EPA LAB ID:** PA01700  
Route 315  
Pittston, Pennsylvania

## TESTING PERFORMED

**Testing Requested:** Surface Water Test - 7A  
**Matrix:** Non-Potable Water  
**Testing / Report ID:** 1L5CNP

## SAMPLE INFORMATION

**Collection Date:** Jul 19, 2023  
**Collected By:** Kim Elias  
**Received Date:** Jul 21, 2023  
**Reported On:** Aug 1, 2023  
**Sample Location:** Outlet  
**Sample Address:** Elkhart Lake, WI 53020, United States

## TESTING NOTES

There were no problems with analytical events associated with this report unless noted. Quality control data is within laboratory defined or method specified acceptance limits except where noted. If you have any questions regarding these test results, please contact [hello@gosimplelab.com](mailto:hello@gosimplelab.com)

## TEST RESULTS

ANALYTE	UNIT	RESULT	MDL	METHOD
Nitrite and Nitrate	mg/L	NOT DETECTED	0.0449	EPA 353.2
Nitrite (as N)	mg/L	NOT DETECTED	0.0126	EPA 353.2
Nitrogen	mg/L	NOT DETECTED	0.2329	Total Nitrogen Calculation
Orthophosphate (as P)	mg/L	NOT DETECTED	0.0408	EPA 365.3
Total Kjeldahl Nitrogen	mg/L	2.22	0.249	EPA 351.2
Total Suspended Solids	mg/L	2.8	1	SM 2540 D

## CLIENT INFORMATION

**Client:** Kevin Sofen  
**Requested On:** Aug 17, 2023  
**Phone:**  
**Email:** [contact@keepelkhartblue.org](mailto:contact@keepelkhartblue.org)

[hello@gosimplelab.com](mailto:hello@gosimplelab.com)

**EPA LAB ID:** PA01700  
Route 315  
Pittston, Pennsylvania

## TESTING PERFORMED

**Testing Requested:** Surface Water Test - 7A  
**Matrix:** Non-Potable Water  
**Testing / Report ID:** 1INVLYR

## SAMPLE INFORMATION

**Collection Date:** Aug 22, 2023  
**Collected By:** Kim Elias  
**Received Date:** Aug 25, 2023  
**Reported On:** Sep 5, 2023  
**Sample Location:** Outlet  
**Sample Address:** Elkhart Lake, WI 53020, United States

## TESTING NOTES

There were no problems with analytical events associated with this report unless noted. Quality control data is within laboratory defined or method specified acceptance limits except where noted. If you have any questions regarding these test results, please contact [hello@gosimplelab.com](mailto:hello@gosimplelab.com)

## TEST RESULTS

ANALYTE	UNIT	RESULT	MDL	METHOD
Nitrite and Nitrate	mg/L	NOT DETECTED	0.0449	EPA 353.2
Nitrite (as N)	mg/L	NOT DETECTED	0.0126	EPA 353.2
Nitrogen	mg/L	NOT DETECTED	0.2939	Total Nitrogen Calculation
Orthophosphate (as P)	mg/L	NOT DETECTED	0.0408	EPA 365.3
Total Kjeldahl Nitrogen	mg/L	<b>0.507</b>	0.249	EPA 351.2
Total Suspended Solids	mg/L	NOT DETECTED	1	SM 2540 D

**CLIENT INFORMATION**

**Client:** Keep Elkhart Blue Elia  
**Requested On:** Jul 13, 2023  
**Phone:** 3106256248  
**Email:** [keepelkhartblue@gmail.com](mailto:keepelkhartblue@gmail.com)

[hello@gosimplelab.com](mailto:hello@gosimplelab.com)

**EPA LAB ID:** PA01700  
Route 315  
Pittston, Pennsylvania

**TESTING PERFORMED**

**Testing Requested:** Surface Water Test - 7A  
**Matrix:** Non-Potable Water  
**Testing / Report ID:** 2XGRMQ

**SAMPLE INFORMATION**

**Collection Date:** Jul 19, 2023  
**Collected By:** Kim Elias  
**Received Date:** Jul 21, 2023  
**Reported On:** Aug 1, 2023  
**Sample Location:** Merrybrook  
**Sample Address:** Elkhart Lake, WI 53020, United States

**TESTING NOTES**

There were no problems with analytical events associated with this report unless noted. Quality control data is within laboratory defined or method specified acceptance limits except where noted. If you have any questions regarding these test results, please contact [hello@gosimplelab.com](mailto:hello@gosimplelab.com)

**TEST RESULTS**

ANALYTE	UNIT	RESULT	MDL	METHOD
Nitrite and Nitrate	mg/L	NOT DETECTED	0.0449	EPA 353.2
Nitrite (as N)	mg/L	NOT DETECTED	0.0126	EPA 353.2
Nitrogen	mg/L	NOT DETECTED	0.2923	Total Nitrogen Calculation
Orthophosphate (as P)	mg/L	NOT DETECTED	0.0408	EPA 365.3
Total Kjeldahl Nitrogen	mg/L	NOT DETECTED	0.249	EPA 351.2
Total Suspended Solids	mg/L	<b>4.9</b>	1	SM 2540 D

**CLIENT INFORMATION**

**Client:** Keep Elkhart Blue Elia  
**Requested On:** Jun 12, 2023  
**Phone:** 3106256248  
**Email:** [keepelkhartblue@gmail.com](mailto:keepelkhartblue@gmail.com)

[hello@gosimplelab.com](mailto:hello@gosimplelab.com)

**EPA LAB ID:** PA01700  
Route 315  
Pittston, Pennsylvania

**TESTING PERFORMED**

**Testing Requested:** Surface Water Test - 7A  
**Matrix:** Non-Potable Water  
**Testing / Report ID:** 5T55BB

**SAMPLE INFORMATION**

**Collection Date:** Jun 19, 2023  
**Collected By:** Kim Elias  
**Received Date:** Jun 21, 2023  
**Reported On:** Jun 29, 2023  
**Sample Location:** Outlet  
**Sample Address:** Elkhart Lake, WI 53020, United States

**TESTING NOTES**

There were no problems with analytical events associated with this report unless noted. Quality control data is within laboratory defined or method specified acceptance limits except where noted. If you have any questions regarding these test results, please contact [hello@gosimplelab.com](mailto:hello@gosimplelab.com)

**TEST RESULTS**

ANALYTE	UNIT	RESULT	MDL	METHOD
Nitrite and Nitrate	mg/L	<b>0.0551</b>	0.0449	EPA 353.2
Nitrite (as N)	mg/L	NOT DETECTED	0.0126	EPA 353.2
Nitrogen	mg/L	<b>0.786</b>	0.249	Total Nitrogen Calculation
Orthophosphate	mg/L	NOT DETECTED	0.0408	EPA 365.3
Total Kjeldahl nitrogen	mg/L	<b>0.731</b>	0.249	EPA 351.2
Total Suspended Solids	mg/L	<b>2.5</b>	2.5	SM 2540 D



**CLIENT INFORMATION**

**Client:** Keep Elkhart Blue Elia  
**Requested On:** Jun 12, 2023  
**Phone:** 3106256248  
**Email:** [keepelkhartblue@gmail.com](mailto:keepelkhartblue@gmail.com)

[hello@gosimplelab.com](mailto:hello@gosimplelab.com)

**EPA LAB ID:** PA01700  
Route 315  
Pittston, Pennsylvania

**TESTING PERFORMED**

**Testing Requested:** Surface Water Test - 7A  
**Matrix:** Non-Potable Water  
**Testing / Report ID:** D3ST6I

**SAMPLE INFORMATION**

**Collection Date:** Jun 19, 2023  
**Collected By:** Kim Elias  
**Received Date:** Jun 21, 2023  
**Reported On:** Jun 29, 2023  
**Sample Location:** Gully Bay  
**Sample Address:** Elkhart Lake, WI 53020, United States

**TESTING NOTES**

There were no problems with analytical events associated with this report unless noted. Quality control data is within laboratory defined or method specified acceptance limits except where noted. If you have any questions regarding these test results, please contact [hello@gosimplelab.com](mailto:hello@gosimplelab.com)

**TEST RESULTS**

ANALYTE	UNIT	RESULT	MDL	METHOD
Nitrite and Nitrate	mg/L	<b>0.114</b>	0.0449	EPA 353.2
Nitrite (as N)	mg/L	NOT DETECTED	0.0126	EPA 353.2
Nitrogen	mg/L	<b>0.684</b>	0.249	Total Nitrogen Calculation
Orthophosphate (as P)	mg/L	NOT DETECTED	0.0408	EPA 365.3
Total Kjeldahl Nitrogen	mg/L	<b>0.57</b>	0.249	EPA 351.2
Total Suspended Solids	mg/L	NOT DETECTED	2.58	SM 2540 D

**CLIENT INFORMATION**

**Client:** Keep Elkhart Blue Elia  
**Requested On:** Jun 12, 2023  
**Phone:** 3106256248  
**Email:** [keepelkhartblue@gmail.com](mailto:keepelkhartblue@gmail.com)

[hello@gosimplelab.com](mailto:hello@gosimplelab.com)

**EPA LAB ID:** PA01700  
Route 315  
Pittston, Pennsylvania

**TESTING PERFORMED**

**Testing Requested:** Surface Water Test - 7A  
**Matrix:** Non-Potable Water  
**Testing / Report ID:** D3ST6I

**SAMPLE INFORMATION**

**Collection Date:** Jun 19, 2023  
**Collected By:** Kim Elias  
**Received Date:** Jun 21, 2023  
**Reported On:** Jun 29, 2023  
**Sample Location:** Gully Bay  
**Sample Address:** Elkhart Lake, WI 53020, United States

**TESTING NOTES**

There were no problems with analytical events associated with this report unless noted. Quality control data is within laboratory defined or method specified acceptance limits except where noted. If you have any questions regarding these test results, please contact [hello@gosimplelab.com](mailto:hello@gosimplelab.com)

**TEST RESULTS**

ANALYTE	UNIT	RESULT	MDL	METHOD
Nitrite and Nitrate	mg/L	<b>0.114</b>	0.0449	EPA 353.2
Nitrite (as N)	mg/L	NOT DETECTED	0.0126	EPA 353.2
Nitrogen	mg/L	<b>0.684</b>	0.249	Total Nitrogen Calculation
Orthophosphate	mg/L	NOT DETECTED	0.0408	EPA 365.3
Total Kjeldahl nitrogen	mg/L	<b>0.57</b>	0.249	EPA 351.2
Total Suspended Solids	mg/L	NOT DETECTED	2.58	SM 2540 D

**CLIENT INFORMATION**

**Client:** Kevin Sofen  
**Requested On:** Aug 17, 2023  
**Phone:**  
**Email:** [contact@keepelkhartblue.org](mailto:contact@keepelkhartblue.org)

[hello@gosimplelab.com](mailto:hello@gosimplelab.com)

**EPA LAB ID:** PA01700  
Route 315  
Pittston, Pennsylvania

**TESTING PERFORMED**

**Testing Requested:** Surface Water Test - 7A  
**Matrix:** Non-Potable Water  
**Testing / Report ID:** GAI2ZA

**SAMPLE INFORMATION**

**Collection Date:** Aug 22, 2023  
**Collected By:** Kim Elias  
**Received Date:** Aug 25, 2023  
**Reported On:** Sep 5, 2023  
**Sample Location:** The Gully  
**Sample Address:** Elkhart Lake, WI 53020, United States

**TESTING NOTES**

There were no problems with analytical events associated with this report unless noted. Quality control data is within laboratory defined or method specified acceptance limits except where noted. If you have any questions regarding these test results, please contact [hello@gosimplelab.com](mailto:hello@gosimplelab.com)

**TEST RESULTS**

ANALYTE	UNIT	RESULT	MDL	METHOD
Nitrite and Nitrate	mg/L	NOT DETECTED	0.0449	EPA 353.2
Nitrite (as N)	mg/L	NOT DETECTED	0.0126	EPA 353.2
Nitrogen	mg/L	NOT DETECTED	0.2939	Total Nitrogen Calculation
Orthophosphate (as P)	mg/L	NOT DETECTED	0.0408	EPA 365.3
Total Kjeldahl Nitrogen	mg/L	NOT DETECTED	0.249	EPA 351.2
Total Suspended Solids	mg/L	NOT DETECTED	1	SM 2540 D

**CLIENT INFORMATION**

**Client:** Kevin Sofen  
**Requested On:** Aug 17, 2023  
**Phone:**  
**Email:** [contact@keepelkhartblue.org](mailto:contact@keepelkhartblue.org)

[hello@gosimplelab.com](mailto:hello@gosimplelab.com)

**EPA LAB ID:** PA01700  
Route 315  
Pittston, Pennsylvania

**TESTING PERFORMED**

**Testing Requested:** Surface Water Test - 7A  
**Matrix:** Non-Potable Water  
**Testing / Report ID:** MKU4XI

**SAMPLE INFORMATION**

**Collection Date:** Aug 22, 2023  
**Collected By:** Kim Elias  
**Received Date:** Aug 25, 2023  
**Reported On:** Sep 5, 2023  
**Sample Location:** Village Beach  
**Sample Address:** Elkhart Lake, WI 53020, United States

**TESTING NOTES**

There were no problems with analytical events associated with this report unless noted. Quality control data is within laboratory defined or method specified acceptance limits except where noted. If you have any questions regarding these test results, please contact [hello@gosimplelab.com](mailto:hello@gosimplelab.com)

**TEST RESULTS**

ANALYTE	UNIT	RESULT	MDL	METHOD
Nitrite and Nitrate	mg/L	NOT DETECTED	0.0449	EPA 353.2
Nitrite (as N)	mg/L	NOT DETECTED	0.0126	EPA 353.2
Nitrogen	mg/L	<b>0.567</b>	0.2939	Total Nitrogen Calculation
Orthophosphate (as P)	mg/L	NOT DETECTED	0.0408	EPA 365.3
Total Kjeldahl Nitrogen	mg/L	<b>0.567</b>	0.248	EPA 351.2
Total Suspended Solids	mg/L	<b>9.6</b>	1	SM 2540 D

## CLIENT INFORMATION

**Client:** Keep Elkhart Blue Elia  
**Requested On:** Jul 13, 2023  
**Phone:** 3106256248  
**Email:** [keepelkhartblue@gmail.com](mailto:keepelkhartblue@gmail.com)

[hello@gosimplelab.com](mailto:hello@gosimplelab.com)

**EPA LAB ID:** PA01700  
Route 315  
Pittston, Pennsylvania

## TESTING PERFORMED

**Testing Requested:** Surface Water Test - 7A  
**Matrix:** Non-Potable Water  
**Testing / Report ID:** RUIT1V

## SAMPLE INFORMATION

**Collection Date:** Jul 19, 2023  
**Collected By:** Kim Elias  
**Received Date:** Jul 21, 2023  
**Reported On:** Aug 1, 2023  
**Sample Location:** Village  
**Sample Address:** Elkhart Lake, WI 53020, United States

## TESTING NOTES

There were no problems with analytical events associated with this report unless noted. Quality control data is within laboratory defined or method specified acceptance limits except where noted. If you have any questions regarding these test results, please contact [hello@gosimplelab.com](mailto:hello@gosimplelab.com)

## TEST RESULTS

ANALYTE	UNIT	RESULT	MDL	METHOD
Nitrite and Nitrate	mg/L	NOT DETECTED	0.0449	EPA 353.2
Nitrite (as N)	mg/L	NOT DETECTED	0.0126	EPA 353.2
Nitrogen	mg/L	NOT DETECTED	0.2939	Total Nitrogen Calculation
Orthophosphate (as P)	mg/L	NOT DETECTED	0.0408	EPA 365.3
Total Kjeldahl Nitrogen	mg/L	NOT DETECTED	0.249	EPA 351.2
Total Suspended Solids	mg/L	5.3	1	SM 2540 D

**CLIENT INFORMATION**

**Client:** Kevin Sofen  
**Requested On:** Aug 17, 2023  
**Phone:**  
**Email:** [contact@keepelkhartblue.org](mailto:contact@keepelkhartblue.org)

[hello@gosimplelab.com](mailto:hello@gosimplelab.com)

**EPA LAB ID:** PA01700  
Route 315  
Pittston, Pennsylvania

**TESTING PERFORMED**

**Testing Requested:** Surface Water Test - 7A  
**Matrix:** Non-Potable Water  
**Testing / Report ID:** SIZQV2

**SAMPLE INFORMATION**

**Collection Date:** Aug 22, 2023  
**Collected By:** Kim Elias  
**Received Date:** Aug 25, 2023  
**Reported On:** Sep 5, 2023  
**Sample Location:** Merrybrook  
**Sample Address:** Elkhart Lake, WI 53020, United States

**TESTING NOTES**

There were no problems with analytical events associated with this report unless noted. Quality control data is within laboratory defined or method specified acceptance limits except where noted. If you have any questions regarding these test results, please contact [hello@gosimplelab.com](mailto:hello@gosimplelab.com)

**TEST RESULTS**

ANALYTE	UNIT	RESULT	MDL	METHOD
Nitrite and Nitrate	mg/L	NOT DETECTED	0.0449	EPA 353.2
Nitrite (as N)	mg/L	NOT DETECTED	0.0126	EPA 353.2
Nitrogen	mg/L	NOT DETECTED	0.2939	Total Nitrogen Calculation
Orthophosphate (as P)	mg/L	NOT DETECTED	0.0408	EPA 365.3
Total Kjeldahl Nitrogen	mg/L	NOT DETECTED	0.249	EPA 351.2
Total Suspended Solids	mg/L	<b>2.5</b>	1	SM 2540 D

**CLIENT INFORMATION**

**Client:** Keep Elkhart Blue Elia  
**Requested On:** Jul 13, 2023  
**Phone:** 3106256248  
**Email:** [keepelkhartblue@gmail.com](mailto:keepelkhartblue@gmail.com)

[hello@gosimplelab.com](mailto:hello@gosimplelab.com)

**EPA LAB ID:** PA01700  
Route 315  
Pittston, Pennsylvania

**TESTING PERFORMED**

**Testing Requested:** Surface Water Test - 7A  
**Matrix:** Non-Potable Water  
**Testing / Report ID:** X18TD6

**SAMPLE INFORMATION**

**Collection Date:** Jul 19, 2023  
**Collected By:** Kim Elias  
**Received Date:** Jul 21, 2023  
**Reported On:** Aug 1, 2023  
**Sample Location:** Gully Bay  
**Sample Address:** Elkhart Lake, WI 53020, United States

**TESTING NOTES**

There were no problems with analytical events associated with this report unless noted. Quality control data is within laboratory defined or method specified acceptance limits except where noted. If you have any questions regarding these test results, please contact [hello@gosimplelab.com](mailto:hello@gosimplelab.com)

**TEST RESULTS**

ANALYTE	UNIT	RESULT	MDL	METHOD
Nitrite and Nitrate	mg/L	NOT DETECTED	0.0449	EPA 353.2
Nitrite (as N)	mg/L	NOT DETECTED	0.0126	EPA 353.2
Nitrogen	mg/L	NOT DETECTED	0.2939	Total Nitrogen Calculation
Orthophosphate (as P)	mg/L	NOT DETECTED	0.0408	EPA 365.3
Total Kjeldahl Nitrogen	mg/L	NOT DETECTED	0.249	EPA 351.2
Total Suspended Solids	mg/L	<b>4.7</b>	1	SM 2540 D



**CLIENT INFORMATION**

**Client:** Keep Elkhart Blue Elia  
**Requested On:** Jun 12, 2023  
**Phone:** 3106256248  
**Email:** [keepelkhartblue@gmail.com](mailto:keepelkhartblue@gmail.com)

[hello@gosimplelab.com](mailto:hello@gosimplelab.com)

**EPA LAB ID:** PA01700  
Route 315  
Pittston, Pennsylvania

**TESTING PERFORMED**

**Testing Requested:** Surface Water Test - 7A  
**Matrix:** Non-Potable Water  
**Testing / Report ID:** XARL4D

**SAMPLE INFORMATION**

**Collection Date:** Jun 19, 2023  
**Collected By:** Kim Elias  
**Received Date:** Jun 21, 2023  
**Reported On:** Jun 29, 2023  
**Sample Location:** Merrybrook  
**Sample Address:** Elkhart Lake, WI 53020, United States

**TESTING NOTES**

There were no problems with analytical events associated with this report unless noted. Quality control data is within laboratory defined or method specified acceptance limits except where noted. If you have any questions regarding these test results, please contact [hello@gosimplelab.com](mailto:hello@gosimplelab.com)

**TEST RESULTS**

ANALYTE	UNIT	RESULT	MDL	METHOD
Nitrite and Nitrate	mg/L	<b>0.0541</b>	0.0449	EPA 353.2
Nitrite (as N)	mg/L	NOT DETECTED	0.0126	EPA 353.2
Nitrogen	mg/L	<b>0.566</b>	0.249	Total Nitrogen Calculation
Orthophosphate (as P)	mg/L	NOT DETECTED	0.0408	EPA 365.3
Total Kjeldahl Nitrogen	mg/L	<b>0.512</b>	0.249	EPA 351.2
Total Suspended Solids	mg/L	<b>6.7</b>	2.5	SM 2540 D

**CLIENT INFORMATION**

**Client:** Keep Elkhart Blue Elia  
**Requested On:** Jun 12, 2023  
**Phone:** 3106256248  
**Email:** [keepelkhartblue@gmail.com](mailto:keepelkhartblue@gmail.com)

[hello@gosimplelab.com](mailto:hello@gosimplelab.com)

**EPA LAB ID:** PA01700  
Route 315  
Pittston, Pennsylvania

**TESTING PERFORMED**

**Testing Requested:** Surface Water Test - 7A  
**Matrix:** Non-Potable Water  
**Testing / Report ID:** XARL4D

**SAMPLE INFORMATION**

**Collection Date:** Jun 19, 2023  
**Collected By:** Kim Elias  
**Received Date:** Jun 21, 2023  
**Reported On:** Jun 29, 2023  
**Sample Location:** Merrybrook  
**Sample Address:** Elkhart Lake, WI 53020, United States

**TESTING NOTES**

There were no problems with analytical events associated with this report unless noted. Quality control data is within laboratory defined or method specified acceptance limits except where noted. If you have any questions regarding these test results, please contact [hello@gosimplelab.com](mailto:hello@gosimplelab.com)

**TEST RESULTS**

ANALYTE	UNIT	RESULT	MDL	METHOD
Nitrite and Nitrate	mg/L	<b>0.0541</b>	0.0449	EPA 353.2
Nitrite (as N)	mg/L	NOT DETECTED	0.0126	EPA 353.2
Nitrogen	mg/L	<b>0.566</b>	0.249	Total Nitrogen Calculation
Orthophosphate	mg/L	NOT DETECTED	0.0408	EPA 365.3
Total Kjeldahl nitrogen	mg/L	<b>0.512</b>	0.249	EPA 351.2
Total Suspended Solids	mg/L	<b>6.7</b>	2.5	SM 2540 D

**CLIENT INFORMATION**

**Client:** Keep Elkhart Blue Elia  
**Requested On:** Jun 12, 2023  
**Phone:** 3106256248  
**Email:** [keepelkhartblue@gmail.com](mailto:keepelkhartblue@gmail.com)

[hello@gosimplelab.com](mailto:hello@gosimplelab.com)

**EPA LAB ID:** PA01700  
Route 315  
Pittston, Pennsylvania

**TESTING PERFORMED**

**Testing Requested:** Surface Water Test - 7A  
**Matrix:** Non-Potable Water  
**Testing / Report ID:** XRPWQL

**SAMPLE INFORMATION**

**Collection Date:** Jun 19, 2023  
**Collected By:** Kim Elias  
**Received Date:** Jun 21, 2023  
**Reported On:** Jun 29, 2023  
**Sample Location:** Village  
**Sample Address:** Elkhart Lake, WI 53020, United States

**TESTING NOTES**

There were no problems with analytical events associated with this report unless noted. Quality control data is within laboratory defined or method specified acceptance limits except where noted. If you have any questions regarding these test results, please contact [hello@gosimplelab.com](mailto:hello@gosimplelab.com)

**TEST RESULTS**

ANALYTE	UNIT	RESULT	MDL	METHOD
Nitrite and Nitrate	mg/L	<b>0.0752</b>	0.0449	EPA 353.2
Nitrite (as N)	mg/L	NOT DETECTED	0.0126	EPA 353.2
Nitrogen	mg/L	<b>0.782</b>	0.249	Total Nitrogen Calculation
Orthophosphate (as P)	mg/L	NOT DETECTED	0.0408	EPA 365.3
Total Kjeldahl Nitrogen	mg/L	<b>0.707</b>	0.249	EPA 351.2
Total Suspended Solids	mg/L	<b>6.8</b>	2.5	SM 2540 D



**CLIENT INFORMATION**

**Client:** Keep Elkhart Blue Elia  
**Requested On:** Jun 12, 2023  
**Phone:** 3106256248  
**Email:** [keepelkhartblue@gmail.com](mailto:keepelkhartblue@gmail.com)

[hello@gosimplelab.com](mailto:hello@gosimplelab.com)

**EPA LAB ID:** PA01700  
Route 315  
Pittston, Pennsylvania

**TESTING PERFORMED**

**Testing Requested:** Surface Water Test - 7A  
**Matrix:** Non-Potable Water  
**Testing / Report ID:** XRPWQL

**SAMPLE INFORMATION**

**Collection Date:** Jun 19, 2023  
**Collected By:** Kim Elias  
**Received Date:** Jun 21, 2023  
**Reported On:** Jun 29, 2023  
**Sample Location:** Village  
**Sample Address:** Elkhart Lake, WI 53020, United States

**TESTING NOTES**

There were no problems with analytical events associated with this report unless noted. Quality control data is within laboratory defined or method specified acceptance limits except where noted. If you have any questions regarding these test results, please contact [hello@gosimplelab.com](mailto:hello@gosimplelab.com)

**TEST RESULTS**

ANALYTE	UNIT	RESULT	MDL	METHOD
Nitrite and Nitrate	mg/L	<b>0.0752</b>	0.0449	EPA 353.2
Nitrite (as N)	mg/L	NOT DETECTED	0.0126	EPA 353.2
Nitrogen	mg/L	<b>0.782</b>	0.249	Total Nitrogen Calculation
Orthophosphate	mg/L	NOT DETECTED	0.0408	EPA 365.3
Total Kjeldahl nitrogen	mg/L	<b>0.707</b>	0.249	EPA 351.2
Total Suspended Solids	mg/L	<b>6.8</b>	2.5	SM 2540 D

## CLIENT INFORMATION

**Client:** Keep Elkhart Blue Elia  
**Requested On:** Jul 9, 2024  
**Phone:** 3106256248  
**Email:** [keepelkhartblue@gmail.com](mailto:keepelkhartblue@gmail.com)

Kitting, Logistics, and Support provided by: SimpleLab, Inc.

Questions? For fastest assistance:  
[hello@gosimplelab.com](mailto:hello@gosimplelab.com)  
Do not contact facility technicians directly.

## TESTING PERFORMED

**Testing Requested:** Surface Water Test - 6A  
**Matrix:** Non-Potable Water  
**Testing / Report ID:** 3ASHES  
**Testing Facility:** Microbac Laboratories  
**Facility Location:** 428 Route 315 Hwy  
Pittston, Pennsylvania 18640

## SAMPLE INFORMATION

**Collection Date:** Jun 27, 2024  
**Collected By:** Kim Elias  
**Received Date:** Jul 1, 2024  
**Reported On:** Jul 11, 2024  
**Sample Location:** Gully Bay  
**Sample Address:** Elkhart Lake, Gully Bay, Elkhart Lake,  
WI 53020, United States

## TESTING NOTES

There were no problems with analytical events associated with this report unless noted. Quality control data is within laboratory defined or method specified acceptance limits except where noted. If you have any questions regarding these test results, please contact [hello@gosimplelab.com](mailto:hello@gosimplelab.com)

## TEST RESULTS

ANALYTE	UNIT	RESULT	MDL	RL	METHOD
Nitrite and Nitrate	mg/L	0.315	0.0449	0.05	EPA 353.2
Nitrite (as N)	mg/L	NOT DETECTED	0.0126	0.025	EPA 353.2
Nitrogen	mg/L	0.943	0.5	0.5	Total Nitrogen Calculation
Orthophosphate (as P)	mg/L	NOT DETECTED	0.023	0.05	EPA 300.0
Total Kjeldahl Nitrogen	mg/L	0.628	0.249	0.5	EPA 351.2
Total Suspended Solids	mg/L	14.5	1	2.5	SM 2540 D

## CLIENT INFORMATION

**Client:** Keep Elkhart Blue Elia  
**Requested On:** May 28, 2024  
**Phone:** 3106256248  
**Email:** [keepelkhartblue@gmail.com](mailto:keepelkhartblue@gmail.com)

Kitting, Logistics, and Support provided by: SimpleLab, Inc.

Questions? For fastest assistance:  
[hello@gosimplelab.com](mailto:hello@gosimplelab.com)  
Do not contact facility technicians directly.

## TESTING PERFORMED

**Testing Requested:** Surface Water Test - 6A  
**Matrix:** Non-Potable Water  
**Testing / Report ID:** 3M7TAW  
**Testing Facility:** Microbac Laboratories  
**Facility Location:** 428 Route 315 Hwy  
Pittston, Pennsylvania 18640

## SAMPLE INFORMATION

**Collection Date:** May 24, 2024  
**Collected By:** Kim Elias  
**Received Date:** May 29, 2024  
**Reported On:** Jun 5, 2024  
**Sample Location:** Firemans beach  
**Sample Address:** Elkhart Lake, Firemans Beach, Elkhart  
Lake, WI 53020, United States

## TESTING NOTES

There were no problems with analytical events associated with this report unless noted. Quality control data is within laboratory defined or method specified acceptance limits except where noted. If you have any questions regarding these test results, please contact [hello@gosimplelab.com](mailto:hello@gosimplelab.com)

## TEST RESULTS

ANALYTE	UNIT	RESULT	MDL	RL	METHOD
Nitrite and Nitrate	mg/L	NOT DETECTED	0.0449	0.05	EPA 353.2
Nitrite (as N)	mg/L	NOT DETECTED	0.0126	0.025	EPA 353.2
Nitrogen	mg/L	NOT DETECTED	0.5	0.5	Total Nitrogen Calculation
Orthophosphate (as P)	mg/L	NOT DETECTED	0.023	0.05	EPA 300.0
Total Kjeldahl Nitrogen	mg/L	NOT DETECTED	0.249	0.5	EPA 351.2
Total Suspended Solids	mg/L	NOT DETECTED	1	2.5	SM 2540 D



## CLIENT INFORMATION

**Client:** Keep Elkhart Blue Elia  
**Requested On:** May 28, 2024  
**Phone:** 3106256248  
**Email:** [keepelkhartblue@gmail.com](mailto:keepelkhartblue@gmail.com)

Kitting, Logistics, and Support provided by: SimpleLab, Inc.

Questions? For fastest assistance:  
[hello@gosimplelab.com](mailto:hello@gosimplelab.com)  
Do not contact facility technicians directly.

## TESTING PERFORMED

**Testing Requested:** Surface Water Test - 6A  
**Matrix:** Non-Potable Water  
**Testing / Report ID:** 5EFKPZ  
**Testing Facility:** Microbac Laboratories  
**Facility Location:** 428 Route 315 Hwy  
Pittston, Pennsylvania 18640

## SAMPLE INFORMATION

**Collection Date:** May 24, 2024  
**Collected By:** Kim Elias  
**Received Date:** May 29, 2024  
**Reported On:** Jun 5, 2024  
**Sample Location:** Gully Bay  
**Sample Address:** Elkhart Lake, Gully Bay, Elkhart Lake,  
WI 53020, United States

## TESTING NOTES

There were no problems with analytical events associated with this report unless noted. Quality control data is within laboratory defined or method specified acceptance limits except where noted. If you have any questions regarding these test results, please contact [hello@gosimplelab.com](mailto:hello@gosimplelab.com)

## TEST RESULTS

ANALYTE	UNIT	RESULT	MDL	RL	METHOD
Nitrite and Nitrate	mg/L	0.0762	0.0449	0.05	EPA 353.2
Nitrite (as N)	mg/L	NOT DETECTED	0.0126	0.025	EPA 353.2
Nitrogen	mg/L	0.631	0.5	0.5	Total Nitrogen Calculation
Orthophosphate (as P)	mg/L	NOT DETECTED	0.023	0.05	EPA 300.0
Total Kjeldahl Nitrogen	mg/L	0.555	0.249	0.5	EPA 351.2
Total Suspended Solids	mg/L	NOT DETECTED	1	2.5	SM 2540 D



## CLIENT INFORMATION

**Client:** Keep Elkhart Blue Elia  
**Requested On:** Aug 26, 2024  
**Phone:** 3106256248  
**Email:** [keepelkhartblue@gmail.com](mailto:keepelkhartblue@gmail.com)

Kitting, Logistics, and Support provided by: SimpleLab, Inc.

Questions? For fastest assistance:  
[hello@gosimplelab.com](mailto:hello@gosimplelab.com)  
Do not contact facility technicians directly.

## TESTING PERFORMED

**Testing Requested:** Total and Reactive Phosphorus  
Sediment Test

**Matrix:** Sediment

**Testing / Report ID:** CRPWG4

**Testing Facility:** EMSL Analytical Inc

**Facility Location:** 200 Route 130 North  
Cinnaminson, New Jersey 08077

## SAMPLE INFORMATION

**Collection Date:** Aug 22, 2024

**Collected By:** Sarah Majerus

**Received Date:** Aug 27, 2024

**Reported On:** Sep 20, 2024

**Sample Location:** Gully Bay

**Sample Address:** Gully Bay, Elkhart Lake, WI 53020,  
United States

## TESTING NOTES

There were no problems with analytical events associated with this report unless noted. Quality control data is within laboratory defined or method specified acceptance limits except where noted. If you have any questions regarding these test results, please contact [hello@gosimplelab.com](mailto:hello@gosimplelab.com)

## TEST RESULTS

ANALYTE	UNIT	RESULT	MDL	RL	METHOD
Orthophosphate (as P)	mg/Kg	NOT DETECTED	1	2.94	EPA 365.1
Phosphorus	mg/Kg	530	1	42	EPA 6010D

## CLIENT INFORMATION

**Client:** Keep Elkhart Blue Elia  
**Requested On:** Aug 26, 2024  
**Phone:** 3106256248  
**Email:** [keepelkhartblue@gmail.com](mailto:keepelkhartblue@gmail.com)

Kitting, Logistics, and Support provided by: SimpleLab, Inc.

Questions? For fastest assistance:  
[hello@gosimplelab.com](mailto:hello@gosimplelab.com)  
Do not contact facility technicians directly.

## TESTING PERFORMED

**Testing Requested:** Surface Water Test - 6A  
**Matrix:** Non-Potable Water  
**Testing / Report ID:** KDFEXA  
**Testing Facility:** Microbac Laboratories  
**Facility Location:** 428 Route 315 Hwy  
Pittston, Pennsylvania 18640

## SAMPLE INFORMATION

**Collection Date:** Aug 22, 2024  
**Collected By:** Kim Elias  
**Received Date:** Aug 26, 2024  
**Reported On:** Sep 3, 2024  
**Sample Location:** The Outlet  
**Sample Address:** Elkhart Lake, The Outlet, Elkhart Lake,  
WI 53020, United States

## TESTING NOTES

There were no problems with analytical events associated with this report unless noted. Quality control data is within laboratory defined or method specified acceptance limits except where noted. If you have any questions regarding these test results, please contact [hello@gosimplelab.com](mailto:hello@gosimplelab.com)

## TEST RESULTS

ANALYTE	UNIT	RESULT	MDL	RL	METHOD
Nitrite and Nitrate	mg/L	NOT DETECTED	0.0449	0.05	EPA 353.2
Nitrite (as N)	mg/L	NOT DETECTED	0.0126	0.025	EPA 353.2
Nitrogen	mg/L	NOT DETECTED	0.5	0.5	Total Nitrogen Calculation
Orthophosphate (as P)	mg/L	NOT DETECTED	0.023	0.05	EPA 300.0
Total Kjeldahl Nitrogen	mg/L	NOT DETECTED	0.249	0.5	EPA 351.2
Total Suspended Solids	mg/L	NOT DETECTED	1	2.5	SM 2540 D



## CLIENT INFORMATION

**Client:** Keep Elkhart Blue Elia  
**Requested On:** May 28, 2024  
**Phone:** 3106256248  
**Email:** [keepelkhartblue@gmail.com](mailto:keepelkhartblue@gmail.com)

Kitting, Logistics, and Support provided by: SimpleLab, Inc.

Questions? For fastest assistance:  
[hello@gosimplelab.com](mailto:hello@gosimplelab.com)  
Do not contact facility technicians directly.

## TESTING PERFORMED

**Testing Requested:** Surface Water Test - 6A  
**Matrix:** Non-Potable Water  
**Testing / Report ID:** KESFXE  
**Testing Facility:** Microbac Laboratories  
**Facility Location:** 428 Route 315 Hwy  
Pittston, Pennsylvania 18640

## SAMPLE INFORMATION

**Collection Date:** May 24, 2024  
**Collected By:** Kim Elias  
**Received Date:** May 29, 2024  
**Reported On:** Jun 5, 2024  
**Sample Location:** The Outlet  
**Sample Address:** Elkhart Lake, The Outlet, Elkhart Lake,  
WI 53020, United States

## TESTING NOTES

There were no problems with analytical events associated with this report unless noted. Quality control data is within laboratory defined or method specified acceptance limits except where noted. If you have any questions regarding these test results, please contact [hello@gosimplelab.com](mailto:hello@gosimplelab.com)

## TEST RESULTS

ANALYTE	UNIT	RESULT	MDL	RL	METHOD
Nitrite and Nitrate	mg/L	NOT DETECTED	0.0449	0.05	EPA 353.2
Nitrite (as N)	mg/L	NOT DETECTED	0.0126	0.025	EPA 353.2
Nitrogen	mg/L	<b>0.998</b>	0.5	0.5	Total Nitrogen Calculation
Orthophosphate (as P)	mg/L	NOT DETECTED	0.023	0.05	EPA 300.0
Total Kjeldahl Nitrogen	mg/L	<b>0.998</b>	0.249	0.5	EPA 351.2
Total Suspended Solids	mg/L	NOT DETECTED	1	2.5	SM 2540 D

## CLIENT INFORMATION

**Client:** Keep Elkhart Blue Elia  
**Requested On:** Jul 9, 2024  
**Phone:** 3106256248  
**Email:** [keepelkhartblue@gmail.com](mailto:keepelkhartblue@gmail.com)

Kitting, Logistics, and Support provided by: SimpleLab, Inc.

Questions? For fastest assistance:  
[hello@gosimplelab.com](mailto:hello@gosimplelab.com)  
Do not contact facility technicians directly.

## TESTING PERFORMED

**Testing Requested:** Surface Water Test - 6A  
**Matrix:** Non-Potable Water  
**Testing / Report ID:** MCLGDQ  
**Testing Facility:** Microbac Laboratories  
**Facility Location:** 428 Route 315 Hwy  
Pittston, Pennsylvania 18640

## SAMPLE INFORMATION

**Collection Date:** Jun 27, 2024  
**Collected By:** Kim Elias  
**Received Date:** Jul 1, 2024  
**Reported On:** Jul 11, 2024  
**Sample Location:** Merrybook  
**Sample Address:** Elkhart Lake, Merrybrook, Elkhart Lake,  
WI 53020, United States

## TESTING NOTES

There were no problems with analytical events associated with this report unless noted. Quality control data is within laboratory defined or method specified acceptance limits except where noted. If you have any questions regarding these test results, please contact [hello@gosimplelab.com](mailto:hello@gosimplelab.com)

## TEST RESULTS

ANALYTE	UNIT	RESULT	MDL	RL	METHOD
Nitrite and Nitrate	mg/L	NOT DETECTED	0.0449	0.05	EPA 353.2
Nitrite (as N)	mg/L	NOT DETECTED	0.0126	0.025	EPA 353.2
Nitrogen	mg/L	<b>0.506</b>	0.5	0.5	Total Nitrogen Calculation
Orthophosphate (as P)	mg/L	NOT DETECTED	0.023	0.05	EPA 300.0
Total Kjeldahl Nitrogen	mg/L	<b>0.506</b>	0.249	0.5	EPA 351.2
Total Suspended Solids	mg/L	NOT DETECTED	1	2.5	SM 2540 D



## CLIENT INFORMATION

**Client:** Keep Elkhart Blue Elia  
**Requested On:** Aug 26, 2024  
**Phone:** 3106256248  
**Email:** [keepelkhartblue@gmail.com](mailto:keepelkhartblue@gmail.com)

Kitting, Logistics, and Support provided by: SimpleLab, Inc.

Questions? For fastest assistance:  
[hello@gosimplelab.com](mailto:hello@gosimplelab.com)  
Do not contact facility technicians directly.

## TESTING PERFORMED

**Testing Requested:** Surface Water Test - 6A  
**Matrix:** Non-Potable Water  
**Testing / Report ID:** O54MQT  
**Testing Facility:** Microbac Laboratories  
**Facility Location:** 428 Route 315 Hwy  
Pittston, Pennsylvania 18640

## SAMPLE INFORMATION

**Collection Date:** Aug 22, 2024  
**Collected By:** Kim Elias  
**Received Date:** Aug 26, 2024  
**Reported On:** Sep 3, 2024  
**Sample Location:** Merrybrook  
**Sample Address:** Merrybrook, Elkhart Lake, WI 53020,  
United States

## TESTING NOTES

There were no problems with analytical events associated with this report unless noted. Quality control data is within laboratory defined or method specified acceptance limits except where noted. If you have any questions regarding these test results, please contact [hello@gosimplelab.com](mailto:hello@gosimplelab.com)

## TEST RESULTS

ANALYTE	UNIT	RESULT	MDL	RL	METHOD
Nitrite and Nitrate	mg/L	NOT DETECTED	0.0449	0.05	EPA 353.2
Nitrite (as N)	mg/L	NOT DETECTED	0.0126	0.025	EPA 353.2
Nitrogen	mg/L	NOT DETECTED	0.5	0.5	Total Nitrogen Calculation
Orthophosphate (as P)	mg/L	NOT DETECTED	0.023	0.05	EPA 300.0
Total Kjeldahl Nitrogen	mg/L	NOT DETECTED	0.249	0.5	EPA 351.2
Total Suspended Solids	mg/L	3.22	1.11	2.78	SM 2540 D





## CLIENT INFORMATION

**Client:** Keep Elkhart Blue Elia  
**Requested On:** Aug 26, 2024  
**Phone:** 3106256248  
**Email:** [keepelkhartblue@gmail.com](mailto:keepelkhartblue@gmail.com)

Kitting, Logistics, and Support provided by: SimpleLab, Inc.

Questions? For fastest assistance:  
[hello@gosimplelab.com](mailto:hello@gosimplelab.com)  
Do not contact facility technicians directly.

## TESTING PERFORMED

**Testing Requested:** Total and Reactive Phosphorus  
Sediment Test

**Matrix:** Sediment

**Testing / Report ID:** Q28CGX

**Testing Facility:** EMSL Analytical Inc

**Facility Location:** 200 Route 130 North  
Cinnaminson, New Jersey 08077

## SAMPLE INFORMATION

**Collection Date:** Aug 22, 2024

**Collected By:** Kim Elias

**Received Date:** Aug 27, 2024

**Reported On:** Sep 20, 2024

**Sample Location:** Merrybrook

**Sample Address:** Merrybrook, Elkhart Lake, WI 53020,  
United States

## TESTING NOTES

There were no problems with analytical events associated with this report unless noted. Quality control data is within laboratory defined or method specified acceptance limits except where noted. If you have any questions regarding these test results, please contact [hello@gosimplelab.com](mailto:hello@gosimplelab.com)

## TEST RESULTS

ANALYTE	UNIT	RESULT	MDL	RL	METHOD
Orthophosphate (as P)	mg/Kg	NOT DETECTED	1	2.98	EPA 365.1
Phosphorus	mg/Kg	330	1	16	EPA 6010D



## CLIENT INFORMATION

**Client:** Keep Elkhart Blue Elia  
**Requested On:** Jul 9, 2024  
**Phone:** 3106256248  
**Email:** [keepelkhartblue@gmail.com](mailto:keepelkhartblue@gmail.com)

Kitting, Logistics, and Support provided by: SimpleLab, Inc.

Questions? For fastest assistance:  
[hello@gosimplelab.com](mailto:hello@gosimplelab.com)  
Do not contact facility technicians directly.

## TESTING PERFORMED

**Testing Requested:** Surface Water Test - 6A  
**Matrix:** Non-Potable Water  
**Testing / Report ID:** V3Y14Q  
**Testing Facility:** Microbac Laboratories  
**Facility Location:** 428 Route 315 Hwy  
Pittston, Pennsylvania 18640

## SAMPLE INFORMATION

**Collection Date:** Jun 27, 2024  
**Collected By:** Kim Elias  
**Received Date:** Jul 1, 2024  
**Reported On:** Jul 11, 2024  
**Sample Location:** Firemans beach  
**Sample Address:** Elkhart Lake, Firemans Beach, Elkhart  
Lake, WI 53020, United States

## TESTING NOTES

There were no problems with analytical events associated with this report unless noted. Quality control data is within laboratory defined or method specified acceptance limits except where noted. If you have any questions regarding these test results, please contact [hello@gosimplelab.com](mailto:hello@gosimplelab.com)

## TEST RESULTS

ANALYTE	UNIT	RESULT	MDL	RL	METHOD
Nitrite and Nitrate	mg/L	NOT DETECTED	0.0449	0.05	EPA 353.2
Nitrite (as N)	mg/L	NOT DETECTED	0.0126	0.025	EPA 353.2
Nitrogen	mg/L	NOT DETECTED	0.5	0.5	Total Nitrogen Calculation
Orthophosphate (as P)	mg/L	NOT DETECTED	0.023	0.05	EPA 300.0
Total Kjeldahl Nitrogen	mg/L	NOT DETECTED	0.249	0.5	EPA 351.2
Total Suspended Solids	mg/L	NOT DETECTED	1	2.5	SM 2540 D



## CLIENT INFORMATION

**Client:** Keep Elkhart Blue Elia  
**Requested On:** May 28, 2024  
**Phone:** 3106256248  
**Email:** [keepelkhartblue@gmail.com](mailto:keepelkhartblue@gmail.com)

Kitting, Logistics, and Support provided by: SimpleLab, Inc.

Questions? For fastest assistance:  
[hello@gosimplelab.com](mailto:hello@gosimplelab.com)  
Do not contact facility technicians directly.

## TESTING PERFORMED

**Testing Requested:** Surface Water Test - 6A  
**Matrix:** Non-Potable Water  
**Testing / Report ID:** Y3MD8B  
**Testing Facility:** Microbac Laboratories  
**Facility Location:** 428 Route 315 Hwy  
Pittston, Pennsylvania 18640

## SAMPLE INFORMATION

**Collection Date:** May 24, 2024  
**Collected By:** Kevin Elias  
**Received Date:** May 29, 2024  
**Reported On:** Jun 5, 2024  
**Sample Location:** Merrybrook  
**Sample Address:** Elkhart Lake, Merrybrook, Elkhart Lake,  
WI 53020, United States

## TESTING NOTES

There were no problems with analytical events associated with this report unless noted. Quality control data is within laboratory defined or method specified acceptance limits except where noted. If you have any questions regarding these test results, please contact [hello@gosimplelab.com](mailto:hello@gosimplelab.com)

## TEST RESULTS

ANALYTE	UNIT	RESULT	MDL	RL	METHOD
Nitrite and Nitrate	mg/L	0.0517	0.0449	0.05	EPA 353.2
Nitrite (as N)	mg/L	NOT DETECTED	0.0126	0.025	EPA 353.2
Nitrogen	mg/L	0.568	0.5	0.5	Total Nitrogen Calculation
Orthophosphate (as P)	mg/L	NOT DETECTED	0.023	0.05	EPA 300.0
Total Kjeldahl Nitrogen	mg/L	0.516	0.249	0.5	EPA 351.2
Total Suspended Solids	mg/L	NOT DETECTED	1	2.5	SM 2540 D



## CLIENT INFORMATION

**Client:** Keep Elkhart Blue Elia  
**Requested On:** Jul 9, 2024  
**Phone:** 3106256248  
**Email:** [keepelkhartblue@gmail.com](mailto:keepelkhartblue@gmail.com)

Kitting, Logistics, and Support provided by: SimpleLab, Inc.

Questions? For fastest assistance:  
[hello@gosimplelab.com](mailto:hello@gosimplelab.com)  
Do not contact facility technicians directly.

## TESTING PERFORMED

**Testing Requested:** Surface Water Test - 6A  
**Matrix:** Non-Potable Water  
**Testing / Report ID:** YKOKDD  
**Testing Facility:** Microbac Laboratories  
**Facility Location:** 428 Route 315 Hwy  
Pittston, Pennsylvania 18640

## SAMPLE INFORMATION

**Collection Date:** Jun 27, 2024  
**Collected By:** Kevin Sofen  
**Received Date:** Jul 1, 2024  
**Reported On:** Jul 11, 2024  
**Sample Location:** Outlet  
**Sample Address:** Elkhart Lake, The Outlet, Elkhart Lake,  
WI 53020, United States

## TESTING NOTES

There were no problems with analytical events associated with this report unless noted. Quality control data is within laboratory defined or method specified acceptance limits except where noted. If you have any questions regarding these test results, please contact [hello@gosimplelab.com](mailto:hello@gosimplelab.com)

## TEST RESULTS

ANALYTE	UNIT	RESULT	MDL	RL	METHOD
Nitrite and Nitrate	mg/L	NOT DETECTED	0.0449	0.05	EPA 353.2
Nitrite (as N)	mg/L	NOT DETECTED	0.0126	0.025	EPA 353.2
Nitrogen	mg/L	<b>0.563</b>	0.5	0.5	Total Nitrogen Calculation
Orthophosphate (as P)	mg/L	NOT DETECTED	0.023	0.05	EPA 300.0
Total Kjeldahl Nitrogen	mg/L	<b>0.563</b>	0.249	0.5	EPA 351.2
Total Suspended Solids	mg/L	NOT DETECTED	1	2.5	SM 2540 D



**E.L.I.A. Annual Members Meeting Minutes  
June 9, 2023  
Osthoff Resort, Elkhart Lake, WI**

*Please review to the PowerPoint Presentation for Meeting outline and details.*

### **Call to Order** – (Schott)

John Schott – Welcoming comments were made to the group of approximately 120 attendees. Special thanks too to Sue Staum our retiring board member, for putting this annual meeting together and all her years of service on this board. She will be missed!

- **Roll Call** - (Elias) Establishment of a quorum.
- **Approval of Agenda** – dated 06/9/2023
- **Review and Approval of Minutes** – 06/23/2022
  - a. It was moved and seconded to approve the minutes as presented from the 2022 Annual Meeting. Motion passed unanimously.
  - b. Minutes are posted on ELIA website and approved as presented.
- **Treasurers Report** – (Boeldt)

An updated report was reviewed for the membership including the receipt of \$83,153.98 in government grants. Overall comment that we are in a strong financial position. Approved. (refer to PowerPoint Presentation for details).

### **Committee Reports:**

1. **Nominee of Board of Directors:** (Froh) Presented the recommendations for the slate of Board of Directors for the 2024 – 2026 term:
  - a. Renewals for Schott, Hanlon, Sofen and Gunther. Staum has chosen to retire for the board and in her place the nominating committee recommended Lauren Hall.
  - b. Motion was made and unanimous approval of the Board of Directors as presented was passed. We thank Sue sincerely for her service to ELIA!
2. **Ecology:**
  - a. **Invasive Species Committee / Clean Boats/Clean Waters** (Hanlon)

Provided an update regarding Aquatic Invasive Species (AIS); they are the same three; Eurasian Watermilfoil, Curly-Leaf Pondweed and zebra mussels. Continued efforts to control the spread of AIS.

    - The CBCW program is continuing to prevent the spread of AIS. Discussed the employees to support CBCL at the boat launch.
    - Our contract for weed control has been signed and the permits are now in process. Notifications have been made concerning the treatment process. This will again include the Sheboygan Bay algae island.
  - b. **Lake Water Quality** - (Elias / Majerus)
    - **2022 Elkhart Lake Public Survey** – Majerus presented the findings of the survey including 140 respondents. Top concerns are Water Quality and Runoff, Boat Traffic and Wake Boats, Fishery.

- **Grants:** Majerus reviewed the 2022 Comprehensive Lake Management Plan Recommendations including recommended new and continued activities to help manage the lake (refer to PowerPoint Presentation).
  - Native Shoreline Gardens, including 350 sq. ft. native plantings, and/or rain gardens, will be designed and installed in two locations along the lake.
  - Grasshopper Hill Prairie & 25-acre Prairie Restoration & Tree Planting Installation & Tree Planting - install a 25-acre prairie restoration on the Schaff property, a direct drainage area on the south side of Elkhart Lake to reduce runoff into the lake, decreasing nutrient and sediment loading. Will also support GLC prairie maintenance.
  - Runoff Management Study & Design - Completed as part of the CLMP Modelling for the agricultural portion of the watershed analysis. Additional general data collection is in progress.
- **Lake Sampling** – Elias explained the continued use of the Citizen Lake Monitoring Network (CLMN) program to sample and monitor the lake water quality since 1990, including WDNR protocols, schedule, and sampling locations.
- **Lake Water Quality**– Elias summarized the lake's health including:
  - Historic Secchi disk graphed results explaining water clarity over long periods monitors the health of a lake, noting a slight downward trend but remaining good water quality.
  - Trophic State Index, including Total Phosphorus, 1990-2022 graph. Mesotrophic state (moderate nutrients and productivity); fertile with higher phosphorous levels, and moderately clear water. Biological productivity is elevated including fish production.
  - Phosphorus levels slight increase last few years. Phosphorus can be problematic because excess nutrients can cause algal blooms and excessive plant growth in the lake, impacting the ecological and recreational potential of the lake. This is why ELIA completed the 2022 Comprehensive Lake Management Plan and subsequent Grant Projects.
  - Discussed the lake turnover process being the seasonal mixing of the entire water column.
- 3. **Public Outreach / Keep Elkhart Blue** (Strigenz / Sofen)
  - a. Merchandise Support -Strigenz shared KEB local merchandise and special-order items and explained the support and awareness provided through merchandise. Upcoming activities include ELIA 4th of July Float, Downtown Night will be Aug 14 and we will have our booth as usual, and noted KEB Facebook Postings.
  - b. Sofen showed the newest KEB keychain, explained the QR Code, and importance of KEB and best management practices.
- 4. **Website Update** (Boeldt)
  - a. Shared the website, how to renew your membership and DONATE! Check out website and provide suggestions and content!
- 5. **President's Comments** (Schott)
  - a. Caring for the lake discussion.
  - b. Partnerships have made us successful.
  - c. Questions and Answers.

**Adjourn** Motion was made to adjourn. Motion carried – meeting adjourned at 7:20pm.

# 2023 ELIA ANNUAL MEETING

Osthoff Resort  
Grand Libelle Ballroom

Friday, June 9th, 2023  
5:30 p.m.

KEEP  
ELKHART  
BLUE



## AGENDA – WELCOME!

5:30 PM Registration - Social Time

6:00 PM Opening Comments and Buffet

6:30 PM Meeting Call to Order (Schott)

- Roll call (Elias)
- Approval of agenda
- Review and approval of minutes from 2022 Annual Meeting
- Public Comments from the Floor
- Treasurer's Report (Boeldt)
- Budget review and approval
- Committee Reports
  - Nominating Committee (Froh)
  - Ecology Committee
    - Aquatic Invasives/Clean Boats Clean Water (Hanlon)
    - Water Quality (Majerus, Elias)
- Public Outreach (Strigenz, Sofen)
- Website Update (Boeldt)
- President's Comments

7:00 PM Adjournment



KEEP  
ELKHART  
BLUE







## - Annual Members Meeting Minutes -

### Elkhart Lake Improvement Association (ELIA)

June 23, 2022

Laack's Ballroom, Johnsonville, WI

#### Opening Comments

John Schott – Welcoming comments were made to the group of approximately 100 attendees.

- Special mention to two Board members we have lost this past year:
  - Tom Nelson – Life Time Director
  - John Fetherston
- Board Changes –
  - Thanks were made to Joe Majerus and Awaiss Siddique for their service on the Board. - Joe Majerus retirement from board mid-term. Sarah Majerus appointed to fill this open position. Awaiss Siddique retirement from board end of term. John Steffes – proposed new board member

**Presentation** – Matt Brauer – Sheboygan County Planning & Conservation -discussed the AIS County Program

**Call to Order** – (Schott)

**Roll Call** – (Elias)

#### Membership Meeting -

1. Approval of minutes from 2021 annual meeting –
  - a. It was moved and seconded to approve the minutes as presented from the 2021 Annual Meeting.
  - b. Motion passed unanimously.
2. Treasurers Report – Randy Boeldt – An updated report was reviewed for the membership with the overall comment that we are in a strong financial position. Approved.

#### Committee Reports –

1. **Nomination of Board Members** - for 2025 term (Froh)
  - a. Randy Boeldt
  - b. Chris Strigenz
  - c. Bill Easom
  - d. John Steffes
  - e. Dee Sheehan

A motion for unanimous consent approval was made and passed unanimously.

#### Ecology Committee –

3. **Aquatic / Clean Boat Clean Water Program** (Hanlon) – The report is that we have a capable group of young people who are staffing the boat landings and helping boaters better understand their role in Keeping Elkhart Blue through the Clean Boat program. The State continues to be very supportive in subsidizing our time which makes it possible to get as many hours put into the staffing as we can manage.

4. **Lake Water Quality** - (Majerus) -Information concerning weed abatement and algae treatment was presented. Additional information concerning the recent award of a \$10,000 County Stewardship grant was discussed as was its use to help us develop our updated Lake Management Plan. In conjunction with reserve funds donated for the purpose of lake management activities, we are looking at gathering additional data concerning our watershed area, inputs to the lake, and coordinating what the county and Lakeshore Natural Resource Partnership, to develop an assessment for the entire Sheboygan River basin, of which we are a part. The level of boating activity was brought forward and the current record of citations and warnings was presented. There was a question as to the concerns being addressed by Crystal and Little Elkhart to address heavy wave activity. Spring 2022 Fish Survey results were shared.

Shared a summary of the Point Intercept Survey figure with 954 sampling points, a 35 meters sampling interval, and the rake used to collect samples. Results include the number of vegetated sites in 2012 compared to 2021.

5. **Public Outreach - Keep Elkhart Blue** (Strigenz, Sofen) – The role of merchandizing products to help promote our ELIA message to the public was reviewed by Chris. While we make money from the sales, the key point for us to build awareness of who we are and what we do. We also have an active social media presence with a FaceBook page that is frequently updated. We will be staffing a booth on Monday, Aug 9<sup>th</sup>, for Down Town night. Merchandise samples were shared and purchasing locations.

QR Code brand awareness was introduced and placed in local businesses.

6. **Website update** - (Elias/Boeldt) -Randy reviewed the current status of our website and outlined the general content available to those who get to our page, and it is an extensive listing!President's comments - (Schott)

**Adjourn** – Motion was made to adjourn. Motion carried – meeting adjourned at 6:50pm.

12:21 PM  
06/04/23  
Cash Basis

### Elkhart Lake Improvement Association Incorporated Financial Report/Balance Sheet

As of June 4, 2023

	Jun 4, 23
<b>ASSETS</b>	
Current Assets	
Checking/Savings	
Marketable Securities	
Vanguard Federal Money Market	
Restricted Funds	
Andy Jung Memorial	12,135.00
Catharine Stayer Fam.Foundation	38,302.89
Mike Sheehan Memorial	1,487.53
Total Restricted Funds	51,925.42
Vanguard Federal Money Market - ...	82,073.47
Total Vanguard Federal Money Market	133,998.89
Western Union	
Western Union Cost	14,684.72
W.U. Unrealized Gain (Loss)	(926.53)
Total Western Union	13,758.19
Total Marketable Securities	147,757.08
National Exchange Bank & Trust	16,660.23
Total Checking/Savings	164,417.31
Total Current Assets	164,417.31
<b>TOTAL ASSETS</b>	<b>164,417.31</b>
<b>LIABILITIES &amp; EQUITY</b>	<b>0.00</b>

KEEP  
ELKHART  
BLUE





06/04/23  
Cash Basis

Elkhart Lake Improvement Association Incorporated  
**Budget vs. Actual Income/Expenses**  
January 1 through June 4, 2023

	Jan 1 - Jun 4, 23	Proposed Budget
<b>Income</b>		
Direct Public Support		
Individual Contributions	7,309.36	16,000.00
Membership Dues Paid	5,200.00	8,000.00
Prepaid PayPal Fees	88.33	100.00
<b>Total Direct Public Support</b>	<b>12,597.69</b>	<b>24,100.00</b>
Government Grants		
Sheboygan County Stewardship	0.00	10,900.00
Lakeshore Natural Resource Part	4,613.98	4,613.98
E.L. Tourism Commission	0.00	1,500.00
Town of Rhine	0.00	1,000.00
Village of Elkhart Lake	0.00	3,550.00
WI DNR		
Clean Boats / Clean Water	1,737.50	3,200.00
LPL185723 - Shoreland RD	0.00	10,000.00
LPT76923 - Osthoff & PE	0.00	2,190.00
LPT79423-Schaff Prairie Restore	11,550.00	46,200.00
<b>Total WI DNR</b>	<b>13,287.50</b>	<b>61,590.00</b>
<b>Total Government Grants</b>	<b>17,901.48</b>	<b>83,153.98</b>
Investments		
Interest & Dividends	2,880.42	3,000.00
Unrealized Gain (Loss)	27.46	0.00
<b>Total Investments</b>	<b>2,907.88</b>	<b>3,000.00</b>
Other Types of Income		
Amazon Smile/Miscellaneous Rev	77.08	0.00
Bring in Stayer Foundation Money from Reserves		20,658.77
<b>Total Other Types of Income</b>	<b>77.08</b>	<b>20,658.77</b>
Program Income		
Keep Elkhart Blue Sales	311.00	2,000.00
<b>Total Program Income</b>	<b>311.00</b>	<b>2,000.00</b>
<b>Total Income</b>	<b>33,795.13</b>	<b>132,912.75</b>
<b>Expense</b>		
Boating Safety		
Boat Maintenance & Storage	452.38	500.00
Boat Registration	0.00	32.00
Boating Regulation Brochures	0.00	300.00
Bouys - New and Maintenance	71.20	500.00
<b>Total Boating Safety</b>	<b>523.58</b>	<b>1,332.00</b>
Business Expenses		
501 (c)(3) Registration Fees	0.00	80.00
Insurance - Liability, D and O	558.00	1,200.00
Technology/Website	29.00	500.00
<b>Total Business Expenses</b>	<b>587.00</b>	<b>1,780.00</b>

06/04/23  
Cash Basis

Elkhart Lake Improvement Association Incorporated  
**Budget vs. Actual Income/Expenses**  
January 1 through June 4, 2023

	Jan 1 - Jun 4, 23	Proposed Budget
<b>Contract Services</b>		
Attorney Fees	0.00	250.00
Clean Boats / Clean Water	0.00	2,600.00
Invasive Weed Control	2,060.64	10,000.00
Police Water Patrol	4,423.03	4,424.00
Water Quality Testing	0.00	2,000.00
Watershed Study-Lake Planning		
Management Plan	3,296.75	3,296.75
LPL185723-Shoreland RD	0.00	35,900.00
LPT76923-Plantings Osthoff & PE	0.00	2,920.00
LPT79423-Schaff Prairie Restore	0.00	46,200.00
<b>Total Watershed Study-Lake Planning</b>	<b>3,296.75</b>	<b>88,316.75</b>
<b>Total Contract Services</b>	<b>9,780.42</b>	<b>107,590.75</b>
<b>Operations</b>		
Community Outreach		
Andy Jung Memorial	0.00	12,135.00
Booths/Events	25.00	150.00
ELIA Brochures	0.00	300.00
Keep Elkhart Blue Promotions	795.15	2,250.00
Parade & Fireworks	0.00	1,000.00
<b>Total Community Outreach</b>	<b>820.15</b>	<b>15,835.00</b>
Meetings		
Board of Directors	0.00	100.00
General Membership	3,900.00	4,500.00
<b>Total Meetings</b>	<b>3,900.00</b>	<b>4,600.00</b>
Office Supplies	50.69	150.00
Organizational Memberships		
Chamber of Commerce	0.00	175.00
Glacial Lakes Conservancy	0.00	250.00
Wisconsin Lakes	0.00	500.00
<b>Total Organizational Memberships</b>	<b>0.00</b>	<b>925.00</b>
Postage, Mailing Service	68.00	200.00
<b>Total Operations</b>	<b>4,838.84</b>	<b>21,710.00</b>
PayPal Fees	155.16	200.00
Travel and Conferences		
Conferences	0.00	150.00
Travel Expenses	0.00	150.00
<b>Total Travel and Conferences</b>	<b>0.00</b>	<b>300.00</b>
<b>Total Expense</b>	<b>15,885.00</b>	<b>132,912.75</b>
<b>Net Income</b>	<b>17,910.13</b>	<b>0.00</b>

## 2024-2025 Board Roster (3-year Terms)

Board Members	Term Expires
Mike Froh	2024
Rick Gebhardt	2024
Kim Elias	2024
Sarah Majerus	2024
Mary Jo Vollrath	2024
Randy Boeldt	2025
Chris Strigenz	2025
Bill Easom	2025
John Steffes	2025
Dee Sheehan	2025
Peter Gunther	2026
Kevin Sofen	2026
Nancy Hanlon	2026
Lauren Hall	2026
John Schott	2026

## 2024-2025 Officers (Annual Election)

### Executive Committee

John Schott	President
Chris Strigenz	Vice President
Kim Elias	Secretary
Randy Boeldt	Treasurer

KEEP  
ELKHART  
BLUE





## Ecology Committee Updates:

- Aquatic Invasive Species
- Clean Boats Clean Waters
- Comprehensive Lake Management Plan
- Grant Projects
- Water Quality Report



KEEP  
ELKHART  
BLUE



## 2022 Elkhart Lake Public Survey

- **140+ total respondents – THANK YOU!**
  - 70% live along the lake shoreline
  - 60% are seasonal residents
  - 69% are ELIA members
- Lake is most utilized for swimming and boating, fishing, wildlife viewing, scenic viewing, entertaining, and solitude
- Majority of respondents report that algae, aquatic plants, and shoreline development has either somewhat or greatly increased over time
- Only 11 percent of respondents reported that aquatic plants and algae never impact their use of Elkhart Lake
- Comments/Concerns:
  - Water Quality and Runoff
  - Boat Traffic and Wake Boats
  - Fishery

KEEP  
ELKHART  
BLUE



# 2022 Comprehensive Lake Management Plan Recommendations

- Continue to monitor the lake water quality
- Continue to monitor dissolved oxygen
- Take sediment cores in the lake to evaluate legacy phosphorus in lake sediment
- Continue Clean Boat Clean Waters (CBCW) program to prevent the spread of AIS\*
- Continue efforts to control the spread of AIS
- Perform aquatic plant inventory every 5 years to evaluate the success of AIS control efforts
- Continue WDNR fish survey efforts
- Implement fish habitat improvement projects (fish sticks and tree drops)
- Implement small-scale shoreline projects that capture surface water runoff and promote native habitat\*



KEEP  
ELKHART  
BLUE



# 2022 Comprehensive Lake Management Plan Recommendations

- Continue to support efforts by partners at Sheboygan County and NRCS to implement conservation practices on agricultural lands (no till, cover crops, pollinator habitat)
- Convert marginal farmland to native habitat\*
- Build upon Sheboygan County efforts to reduce peak flows and phosphorus loading via design and construction of stormwater management solutions within major tributary areas in the Elkhart Lake watershed (sedimentation basins, habitat restoration, and/or water control structures)\*
- Work with partners and property owners to restore, preserve and protect natural habitat within the Elkhart Lake watershed



KEEP  
ELKHART  
BLUE

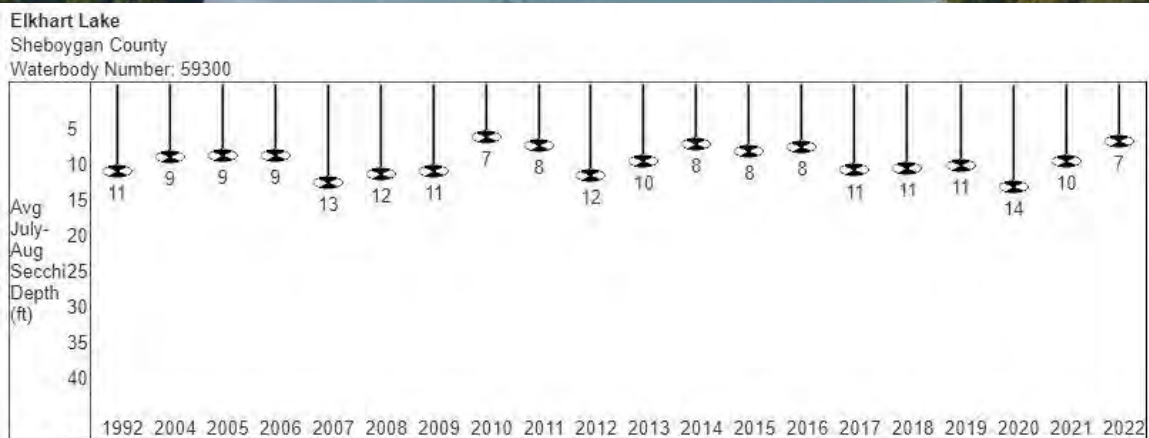




# \*2023-2024 Grant Projects



## Secchi Depth Averages



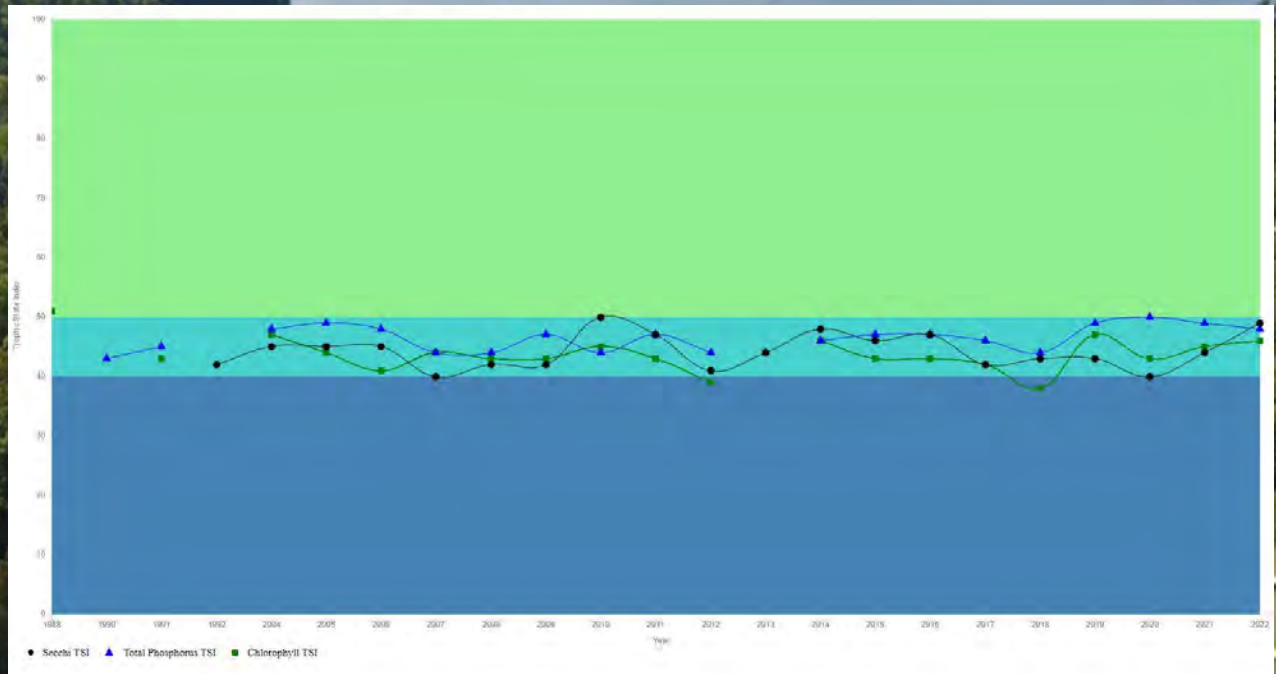
Past secchi averages in feet (July and August only).

KEEP  
ELKHART  
BLUE





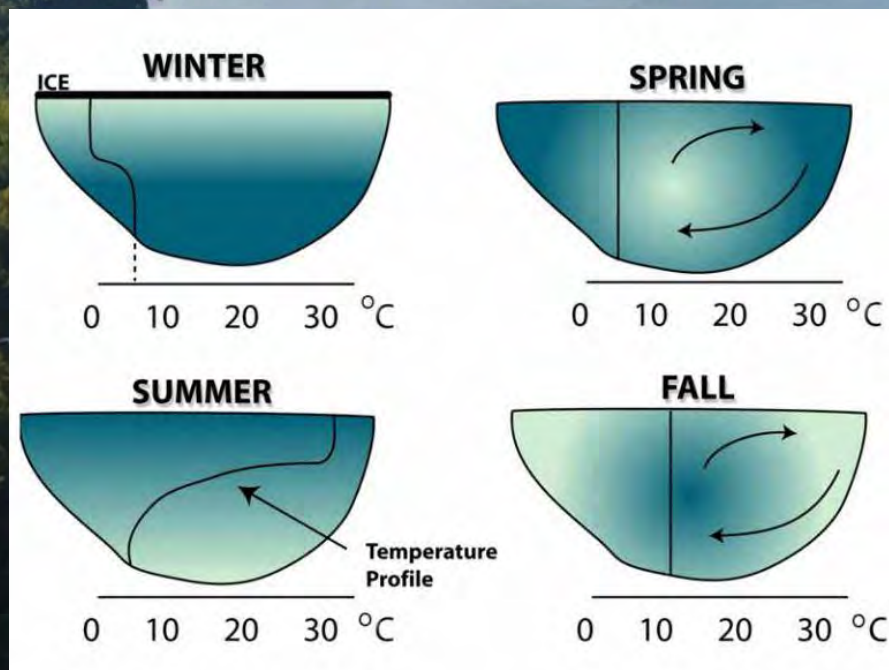
# Trophic State Index Graph



KEEP  
ELKHART  
BLUE



# Annual Lake Mixing



KEEP  
ELKHART  
BLUE







# Keep Elkhart Blue - Public Outreach

- KEB Local Merchandise



Sticker



Hat (Front)



Tote Bag



Mugs



Sling Backpack

- KEB Special Order Options



# Keep Elkhart Blue – Public Outreach

- Facebook Postings



- Webpage

<http://keepelkhartblue.org/>



- QR Code – Brand Awareness Builder



GET INVOLVED



HELP THE CAUSE



JOIN COMMUNITY



# KeepElkhartBlue.org

Preserving the beauty, tranquility, & quality of Elkhart Lake for future generations

[Donate/Pay Dues](#)



[Home](#)

[What We Do](#)

[Support ELIA's Efforts](#)

[Caring for the Lake](#)

[Safe Boating](#)

[Lake History](#)

[News/Archives](#)

[Contact ELIA](#)



## Keep Elkhart Blue

Elkhart Lake Improvement Association (ELIA), Wisconsin

[Become a Member](#)



KEEP  
ELKHART  
BLUE



## President's Message

## CARING FOR THE LAKE

KEEP  
ELKHART  
BLUE





# Original Board of Directors

Terrett J. Arndt	Elkhart Lake
Floyd Dixon	Elkhart Lake
Alfred Linnemann	Elkhart Lake
Howard P. Kraemer	Elkhart Lake
John Linnehan	Elkhart Lake
William Thieman	Elkhart Lake
Harry Bremer	Elkhart Lake
Ernst Groth	Elkhart Lake

- Founded in 1964
- Articles of Incorporation created July 11, 1968
- Filed with the State July 12, 1968
- Signed by Secretary of State July 17, 1968
- First Annual Meeting July 23, 1968

KEEP  
ELKHART  
BLUE





**E.L.I.A. Annual Members Meeting Minutes  
June 14, 2024  
Osthoff Resort, Elkhart Lake, WI**

*Please review to the PowerPoint Presentation for Meeting outline and details.*

**Call to Order** – (Schott)

John Schott – Welcoming comments were made to the group of approximately 93 attendees including a sincere thank you to John Steffes and the entire Osthoff Resort staff that helped provide an outstanding venue for our Annual Meeting. The Osthoff Resort also provided four silent action items with all proceeds going directly to ELIA! Items included: Dining & Beverages, Private 9-Passenger Pontoon Cruise with Driver, Overnight Stay One Bedroom Woodland Suite and any 50-Minute Aspira Spa Service. Additionally, the Osthoff Resort gifted every attendee with coupon package good for a complimentary spa day pass, salt therapy room experience, one-hour free non-motorized watersport rental, \$10 off on an order of \$50 or more, 20% off one regular priced item at the gift shop and buy one get one free any coffee!

- **Roll Call** - (Elias) Establishment of a quorum.
- **Approval of Agenda** – dated 06/14/2024.
- **Review and Approval of Minutes** – 06/09/2023.
  - a. It was moved and seconded to approve the minutes as presented from the 2023 Annual Meeting. Motion passed unanimously.
  - b. Minutes are posted on ELIA website and approved as presented.
- **Treasurers Report** – (Boeldt)
  - a. An updated report was reviewed for the membership including the receipt of government grants. Overall comment that we are in acceptable financial position. Approved. (refer to Presentation for details).
  - b. It was noted that a new Bluetooth compatible oxygen meter was purchased with fund from the Mike Sheehan Memorial.

**Committee Reports:**

1. **Nominee of Board of Directors:** (Froh) Presented the recommendations for the slate of Board of Directors for the 2024 – 2026 term:
  - a. Renewals for Froh, Windsor, Elias, Majerus and Vollrath.
  - b. Dee Sheehan has chosen to retire for the board and in her place the nominating committee recommended Kate Vollrath. Motion was made and unanimous approval of the Board of Directors as presented was passed.
  - c. We thank Dee sincerely for her service to ELIA! She will be missed!
2. **Ecology:**
  - a. **Invasive Species Committee / Clean Boats/Clean Waters** (Hanlon)  
Provided an update regarding Aquatic Invasive Species (AIS); they are the same three; Eurasian Watermilfoil, Curly-Leaf Pondweed and zebra mussels. Continued efforts to control the spread of AIS.

- The CBCW program is continuing to prevent the spread of AIS. Discussed the employees to support CBCL at the boat launch.
- Our contract for weed control has been signed and the permits are now in process. Notifications will be made concerning the treatment process locations.

**b. Lake Water Quality - (Elias)**

- **Lake Monitoring and Sampling** – Elias explained the use of the Citizen Lake Monitoring Network (CLMN) volunteer monitoring program continues (since 1990) to monitor Elkhart Lake water quality, using WDNR protocols, schedule, and sampling locations. We collect Secchi depth, chlorophyll-a and phosphorus samples, and dissolved oxygen and temperature with depth. Samples are collected once during spring turn-over, and three times during the summer (June to September).
- **Monitoring Results** – Elias summarized lake's health including routinely collected data trends over time:
  - Trophic State Index (1990-2023 graph) - relates to the amount of algae in the water. The average summer trophic state for the last 5 years was 43 (Mesotrophic); for a Two-Story lake, this is considered Good. (moderate nutrients and productivity); fertile with higher phosphorous levels, and moderately clear water. Biological productivity is elevated including fish production.
  - Total phosphorus is increasing over time in early summer and no trend over time in late summer. Phosphorus can be problematic because excess nutrients can cause algal blooms and excessive plant growth in the lake, impacting the ecological and recreational potential of the lake. This is why ELIA completed the 2022 Comprehensive Lake Management Plan and subsequent Grant Projects.
  - Chlorophyll-a exhibits - no trend over time in early summer and late summer.
  - Secchi depth, water clarity, exhibits no trend over time in early summer and late summer and is generally more clear.

**3 Public Outreach / Keep Elkhart Blue (Strigenz)**

- a. Public Outreach & Education includes Facebook Postings, Webpage information, Brand Awareness merchandise and education gatherings at the Osthoff's Condo Owners Social, the ELIA Annual Members Meeting, 4th of July Parade Float and Elkhart Lake's Downtown Night.
- b. Merchandise Support - KEB local merchandise and on-line special-order items provides support and awareness. Local KEB merchandise sold at the Elkhart Lake Chamber of Commerce. Pop-up Webstore ran through 6/19/2024. \$10.00 on every item purchased supports ELIA's mission to preserve, promote and enhance the general welfare of Elkhart Lake and the safety of those who use it.
- c. Explained the QR Code and importance of KEB and best management practices.

**4. Website Update (Boeldt)**

- a. Shared the website, how to renew your membership and DONATE! Check out up to date information shared on our website and provide suggestions and content!

## Intermission & Silent Action Reminder

5. **Program – Lake Management Plan (Sofen / Elias)** - Refer to PowerPoint Presentation.
  - a. Kevin presented a summary of the Lake Management Plan presentation presented at the WI Lakes Association Meeting including watershed approach, key elements to holistic vision, Comprehensive Lake Management Plan recommendations, 10-year watershed plan, risks and concerns and timeline of action. Kevin credited Sarah with her efforts in moving ELIA projects forward.
  - b. Kim summarized the four ongoing projects; 1) Prairie Restoration & Tree Planting Installation - prairie restoration on the Schaff property, a direct drainage area on the south side of Elkhart Lake to reduce runoff into the lake, decreasing nutrient and sediment loading and support GLC prairie maintenance, 2) Gully Bay Wetland Restoration to reduce nutrient inputs by improving watershed conditions upstream of Gully Bay, WDNR funded FS completed in 2023 identified extremely high P levels in wetland sediment and recommends removal of P-laden sediment, restoration of native sedge meadow and shallow marsh wetland habitat to improved infiltration and wildlife habitat. WDNR Surface Water Funding (\$10K), just awarded Sheboygan County Stewardship Funding (\$23,500) to support final design, permits, pre-construction and more funding needed for construction in 2025, 3) Lakebed Sediment Sampling and Study goal to limits plant/algae growth through reduce lake phosphorus loading from legacy sediment in the bottom of the lake. WDNR Surface Water (\$10K) awarded to support study. Plan is to collect lake sediment cores, evaluate lake sediment, report potential to reduce internal P loading. Next steps to evaluate P for alum treatment to reduce release of mobile P from the sediment. 4) the Native Shoreline Gardens, including native plantings, and/or rain gardens to be designed and installed in two locations along the lake.
  - c. Kevin continued explaining holistic watershed approach collaborative efforts, and future projects identified through current data and collaboration. Encouraged audience to suggest additional projects or ideas for holistic lake improvement.
6. **President's Comments** (Schott)
  - a. Discus that partnerships have made us successful. The Jenn's family was presented a Certificate of Appreciation for their outstanding, dedicated service and commitment to the Great Lake Watershed.
  - b. Questions from the floor and Answers. Comments included:
    1. Wakeboats – ELIA board has taken no position as we continue to look for science to back proposals. State legislature has failed to provide any direction and will review legislative options in their coming 2024-25 session. The lake is for use by all and users must respect the impact of what they are doing on the ability of others to enjoy their time on and in the water. If people have issues, they should call the Village to get their concerns registered.
    2. Swimmers Itch Complaints – wipe off and shower to avoid the parasite.

**Adjourn** - Motion was made to adjourn. Motion carried – meeting adjourned at 7:50pm



# ELKHART LAKE WATERSHED STAKEHOLDER GATHERING



## WHEN

Thursday, October 24 | 5-7:30 PM

- 5-5:45 Happy Hour
- 5:45-6:15 Lightning Rounds
- 6:15-7:30 Dinner & Networking



## WHAT

- Enjoy free dinner & drinks
- Exchange best practices for improving water quality
- Lightning Rounds from different water stakeholders: kayakers, farmers, & environmental organizations
- Open forum for discussing how we can all contribute to a healthier, more resilient watershed

## WHERE

Farm 1849  
N7189 Co Rd T,  
Glenbeulah, WI 53023

FARM  
1849  
GLENBEULAH, WI

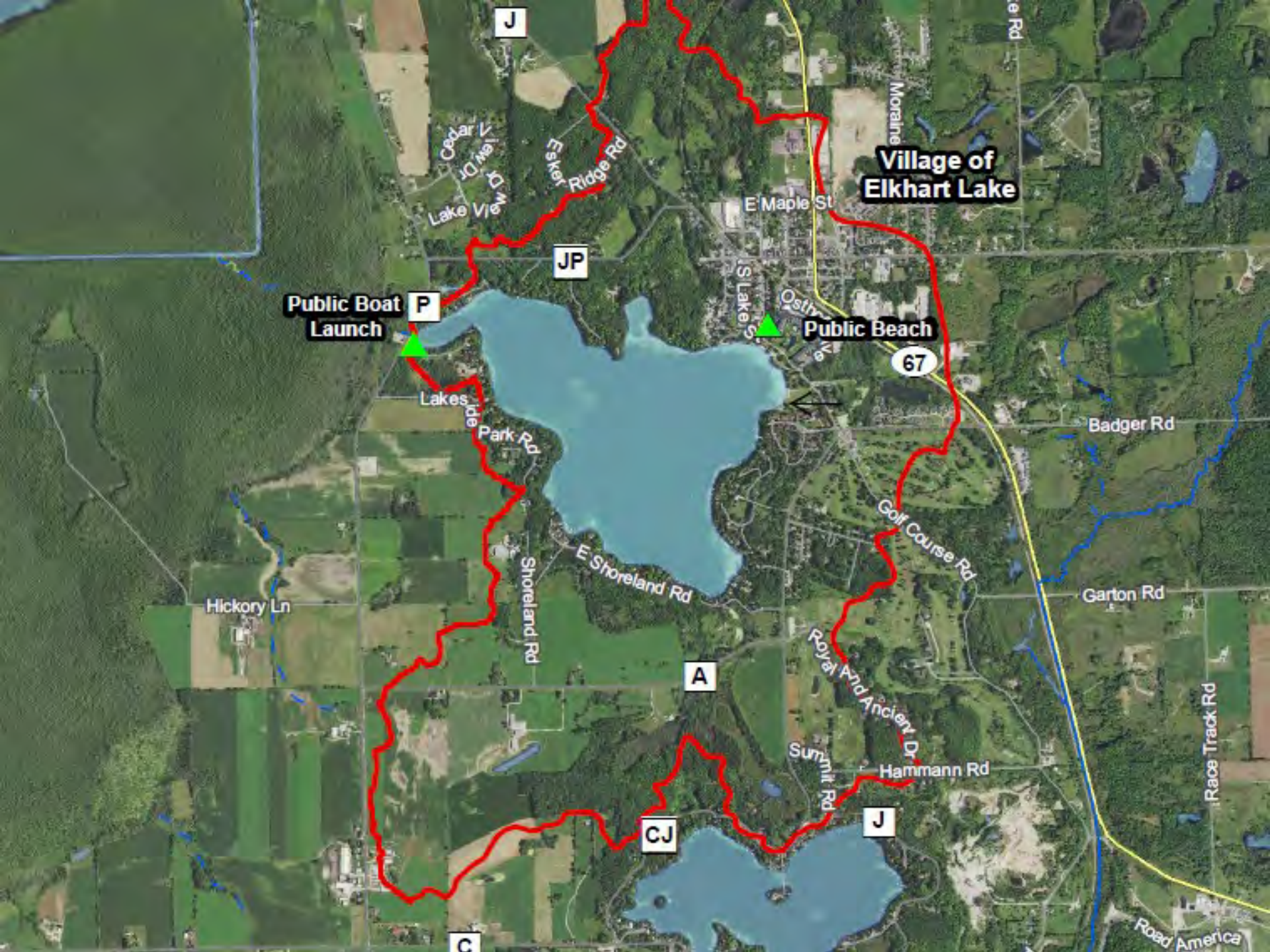
Thank you!



# **LIGHTNING ROUNDS**

- **5:45pm - ELIA Welcome**
- **5:50pm – Tyler Betry, Sheboygan County**
- **5:55pm – Miriam Duero, Glacial Lakes Conservancy**
- **6:00pm – Michael Patin, NRCS**
- **6:05pm – Amy Lentz, Lakeshore Natural Resource Partnership**
- **6:10pm – Derek Sippel, SRPF & Airy Point Farms**
- **6:15pm – Steve Klock, SCCA & Pheasants Forever**
- **6:20pm – Starr Gerk, Sheboygan River Basin Partnership**





**Village of  
Elkhart Lake**

**Public Boat  
Launch**

**Public Beach**

67

J

JP

P

A

CJ

J

C





CALUMET COUNTY  
FOND DU LAC COUNTY

CALUMET COUNTY  
MANITOWOC COUNTY

MANITOWOC COUNTY  
SHEBOYGAN COUNTY

FOND DU LAC COUNTY  
SHEBOYGAN COUNTY



# **SHEBOYGAN COUNTY PLANNING & CONSERVATION**

Tyler Betry  
County  
Conservationist





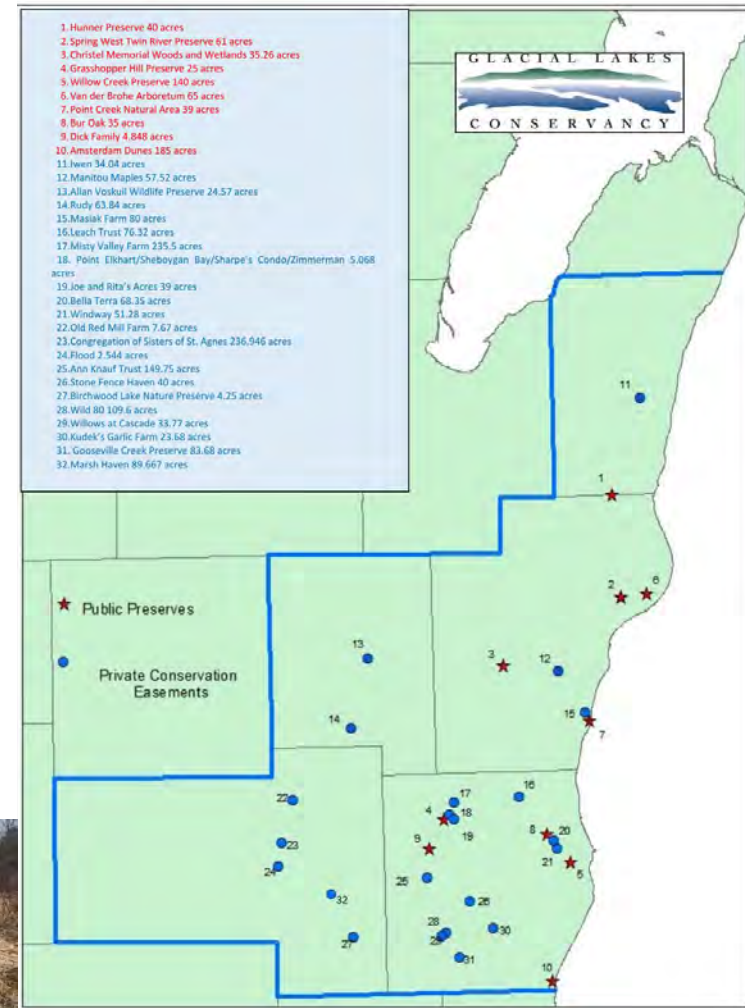
# GRASSHOPPER HILL PRESERVE

MIRIAM DUERO  
LAND PROJECT COORDINATOR

# GLC OVERVIEW

**MISSION: TO PERMANENTLY PRESERVE AND PROTECT LAND AND WATER RESOURCES FOR FUTURE GENERATIONS.**

GLC is one of over 43 types of land trusts in the state of Wisconsin. We were established in 1996, serve 5 counties: Sheboygan, Fond du Lac, Manitowoc, Calumet and Kewaunee and have permanently saved over 2,100 acres of land from development. We own 5 preserves that we manage and hold 29 conservation easements on private lands.







# GRASSHOPPER HILL PRESERVE

This 25-acre property was purchased through fundraising efforts and funds from Sheboygan County Stewardship Program in September 2011.

Glacial kame feature comprised of mainly hardwood forest and dry prairie.



# PAST EFFORTS



- 01** PRAIRIE PLUG PLANTING
- 02** PRAIRIE IMPLEMENTATION
- 03** PRAIRIE MAINTENANCE
- 04** INVASIVE MANAGEMENT
- 05** UPDATES TO ENTRANCE
- 06** BIODIVERSITY MONITORING
- 07** COMMUNITY INVOLVEMENT
- 08** VEGETATION SURVEYS





# ONGOING AND FUTURE EFFORTS

## Continued Efforts

- Invasive species management
- Biodiversity Surveys
- Prairie upkeep and growth
- Grow community partnerships
- Updates to Land Management Plan based on various surveys

## Long Term Goals

- Balanced native habitat achieved with ongoing needed maintenance upheld
- Large base of community partners and volunteers
- Loop trail system with signage





Michael Patin  
District Conservationist

# LAKESHORE NATURAL RESOURCE PARTNERSHIP

Amy Lentz  
Director of Projects



# **SHEBOYGAN RIVER PROGRESSIVE FARMERS**

Derek Sippel  
Owner, Airy Point Farms







# SHEBOYGAN COUNTY CONSERVATION ASSOCIATION

*An organization dedicated to outdoor education, conservation, and protection of the environment*

Steve Klock

VP, SCCA

Sheboygan –  
Manitowoc Pheasants  
Forever

Chapter 590



# **SHEBOYGAN RIVER BASIN PARTNERSHIP**

Starr Gerk  
President

