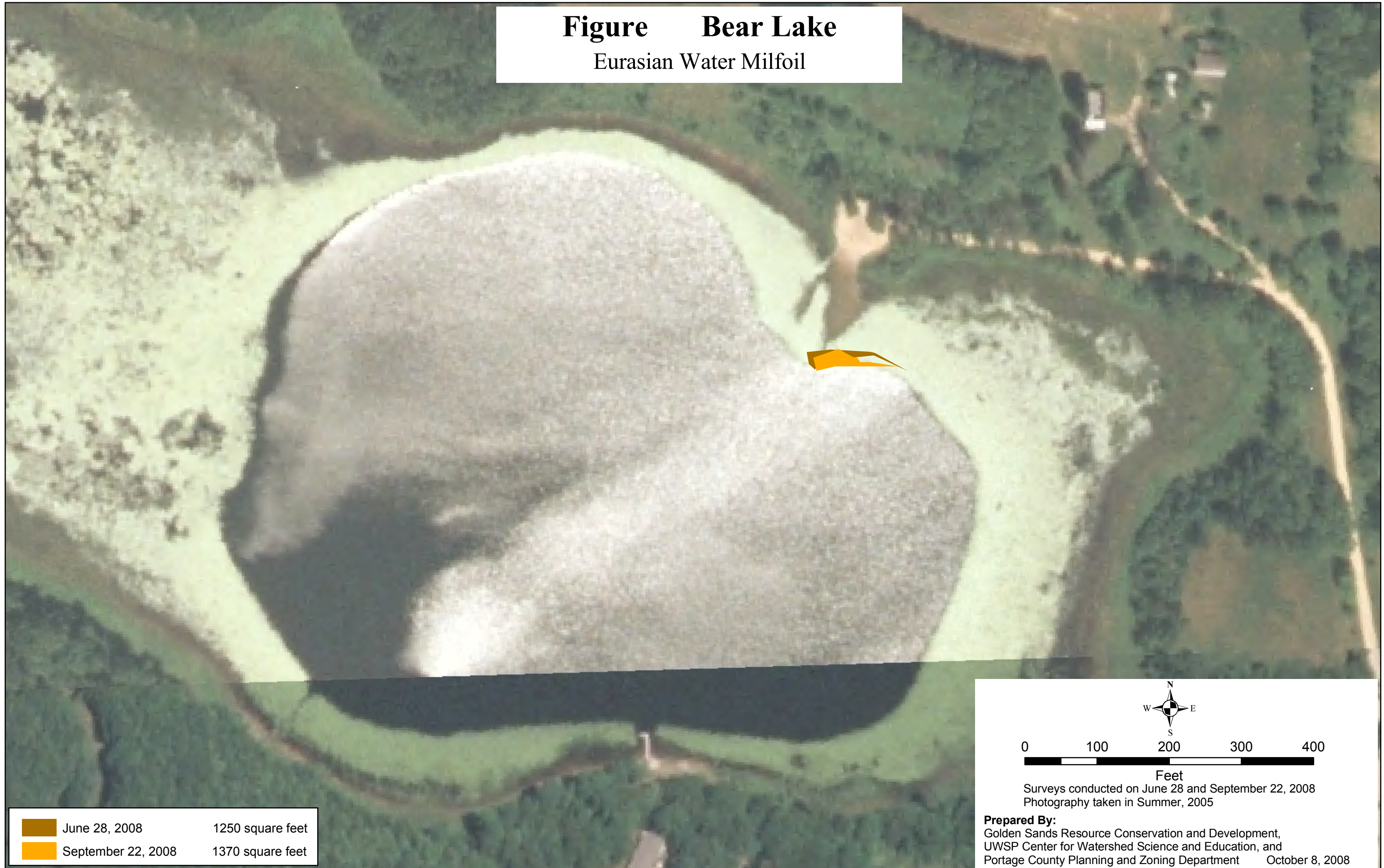




Figure Bear Lake
Eurasian Water Milfoil



	June 28, 2008	1250 square feet
	September 22, 2008	1370 square feet



0 100 200 300 400

Feet

Surveys conducted on June 28 and September 22, 2008
Photography taken in Summer, 2005

Prepared By:
Golden Sands Resource Conservation and Development,
UWSP Center for Watershed Science and Education, and
Portage County Planning and Zoning Department October 8, 2008