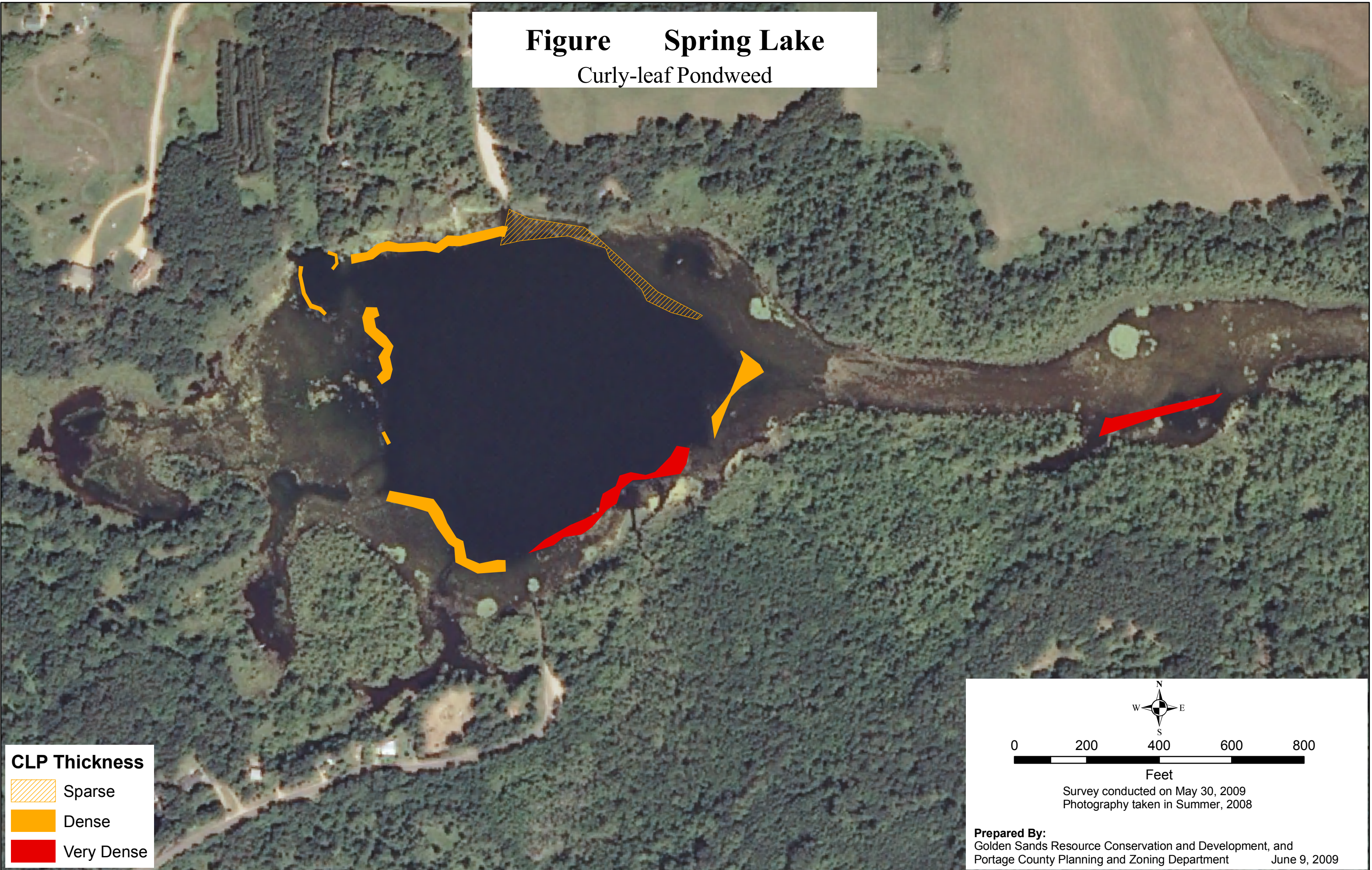


Figure Spring Lake
Curly-leaf Pondweed



CLP Thickness
Sparse
Dense
Very Dense

0 200 400 600 800
Feet

Survey conducted on May 30, 2009
Photography taken in Summer, 2008

Prepared By:
Golden Sands Resource Conservation and Development, and
Portage County Planning and Zoning Department June 9, 2009