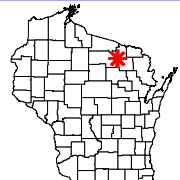






Onterra LLC
 Lake Management Planning
 135 South Broadway Suite C
 De Pere, WI 54115
 920.338.8860
 www.onterra-eco.com

Sources:
 Roads & Hydro: WDNR
 Map date: October 15, 2008

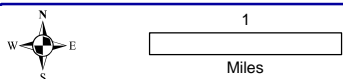
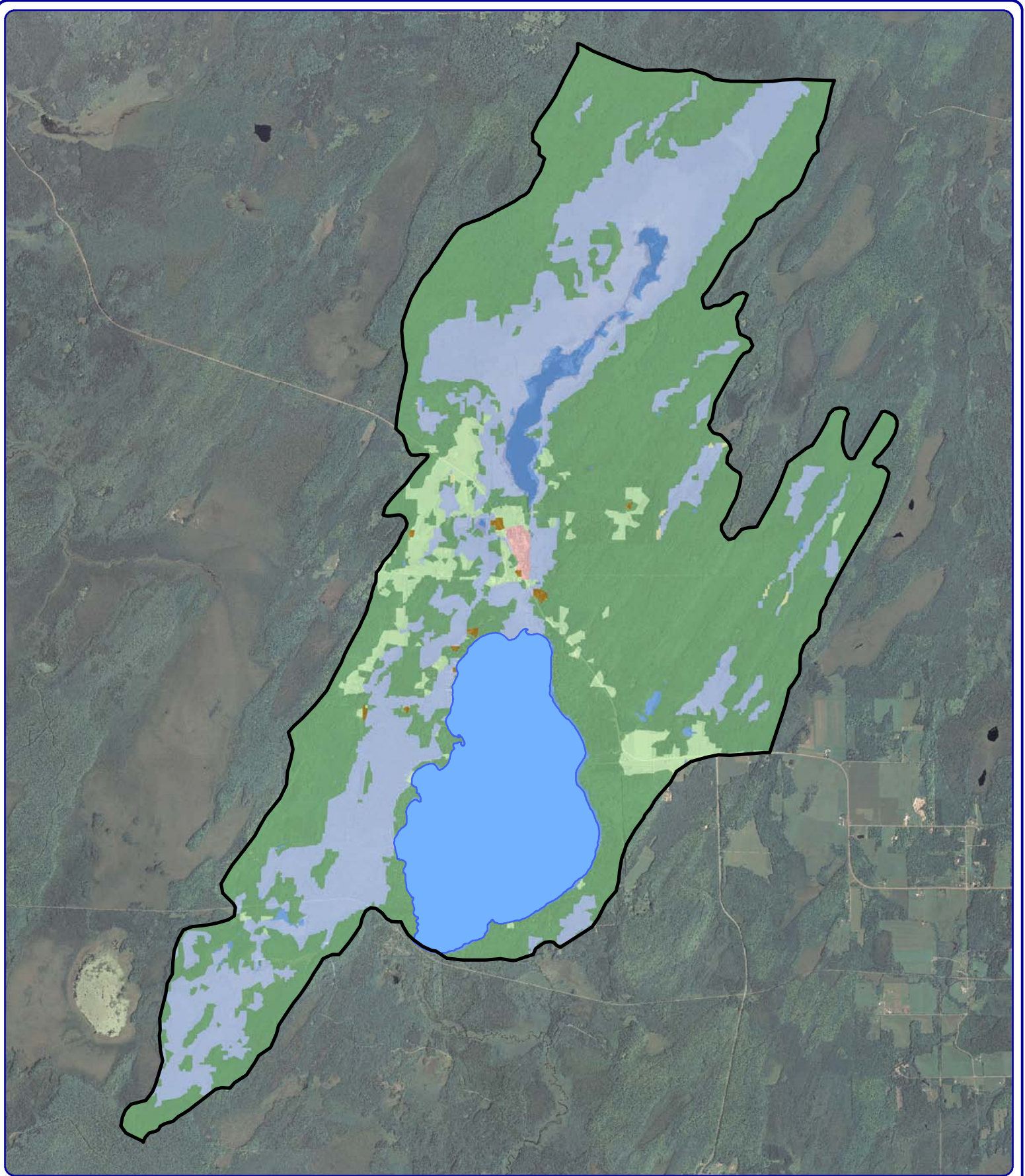


Project location in Wisconsin

Legend

-  Water Quality Sampling Location
-  Dam
-  Public Access
-  Project Lake

Map 1
Pine Lake
 Forest County, Wisconsin
Project Location
& Lake Boundaries



Onterra LLC
 Lake Management Planning
 135 South Broadway Suite C
 De Pere, WI 54115
 920.338.8860
 www.onterra-eco.com

Sources:
 Watershed: WDNR & Onterra
 Landcover: WISCLAND
 Roads & Hydro: WDNR
 Orthophotography: NAIP, 2005
 Map date: September 1, 2010



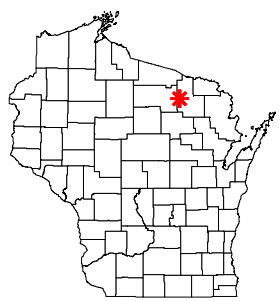
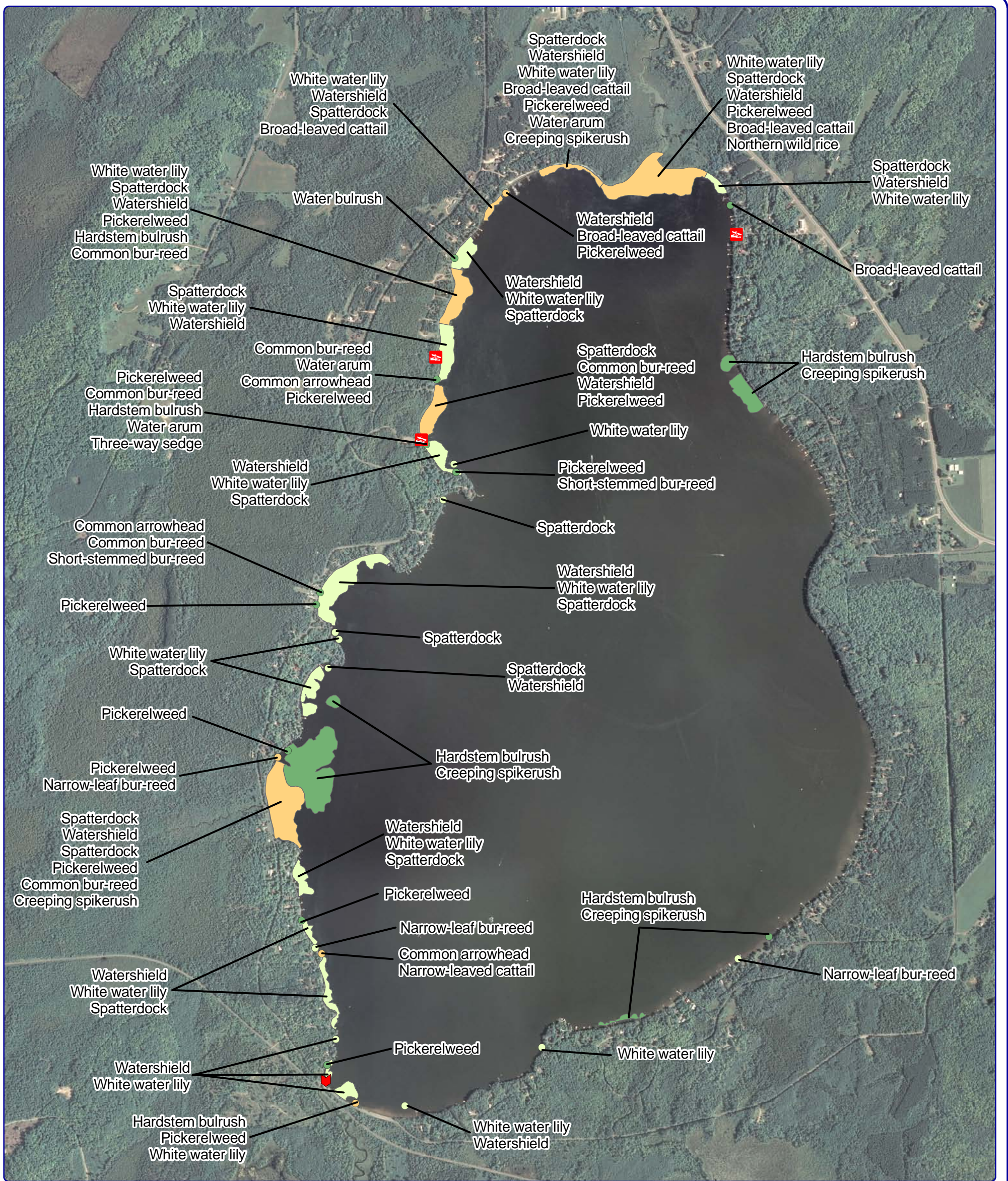
Legend

Watershed Boundary

Land Cover Types

- Forest
- Open Water
- Wetland
- Pasture/Grass
- Row Crop Agriculture
- Medium Density Urban

Map 2
 Pine Lake
 Forest County, Wisconsin
**Watershed and
 Land Cover Types**



Project location in Wisconsin

Legend

Small Plant Communities

- Emergent
- Floating-leaf
- Mixed floating-leaf & emergent

Large Plant Communities

- Emergent
- Floating-leaf
- Mixed floating-leaf & emergent

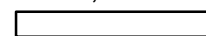
Map 3

Pine Lake

Forest County, Wisconsin

Aquatic Plant Communities

1,350

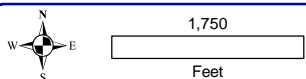
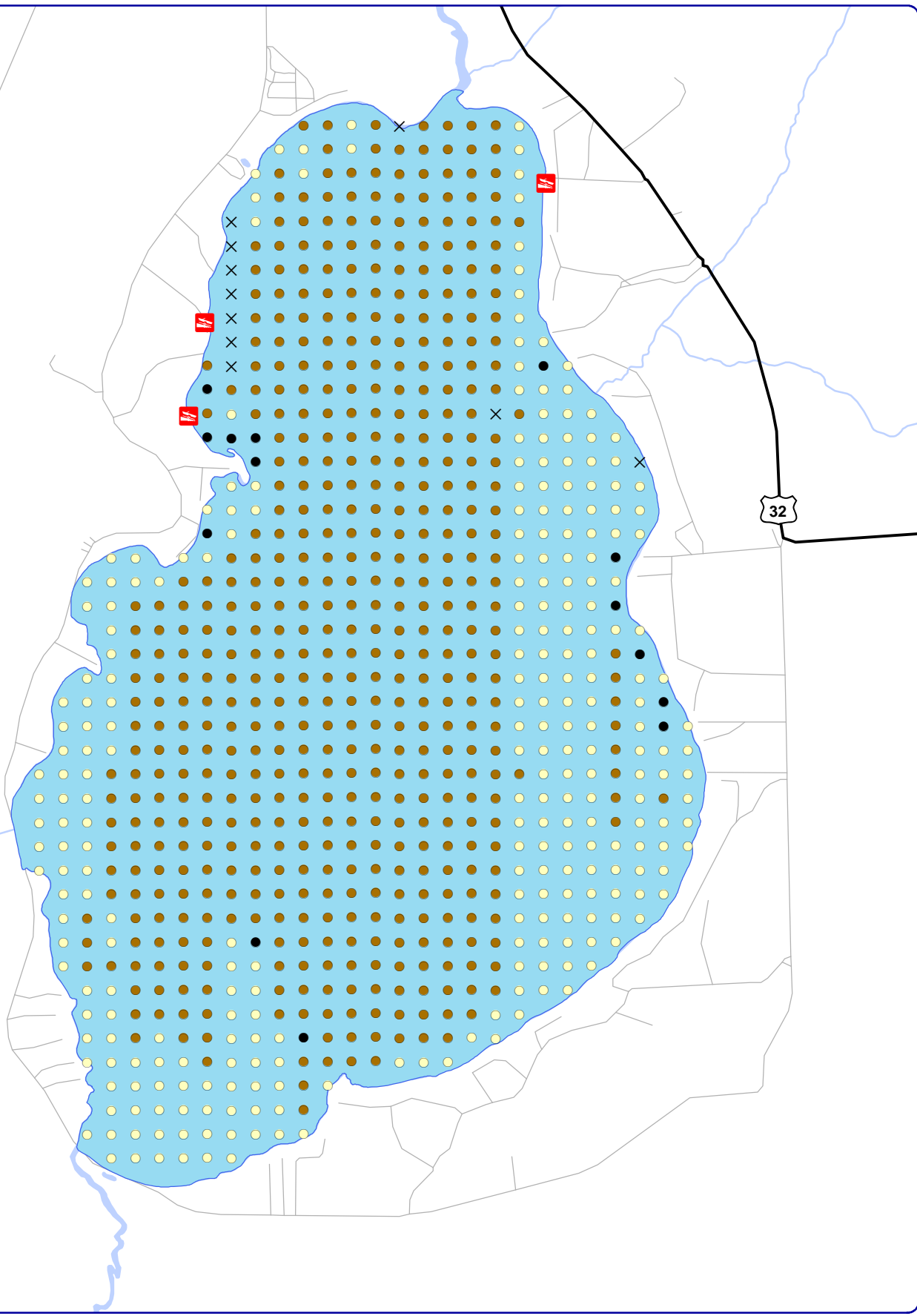


Feet

Sources:
 Roads & Hydro: WDNR
 Orthophotography: NAIP 2005
 Aquatic Plant Survey: Onterra, 2009
Map Date: March 12, 2010



Onterra, LLC 135 South Broadway Suite C
 Lake Management Planning De Pere, WI 54115
 920.338.8860
 www.onterra-eco.com



Onterra LLC
 Lake Management Planning
 135 South Broadway Suite C
 De Pere, WI 54115
 920.338.8860
 www.onterra-eco.com

Sources:
 Roads and Hydro: WDNR
 Aquatic Plant Survey: WDNR, 2009
 Map Date: September 1, 2010

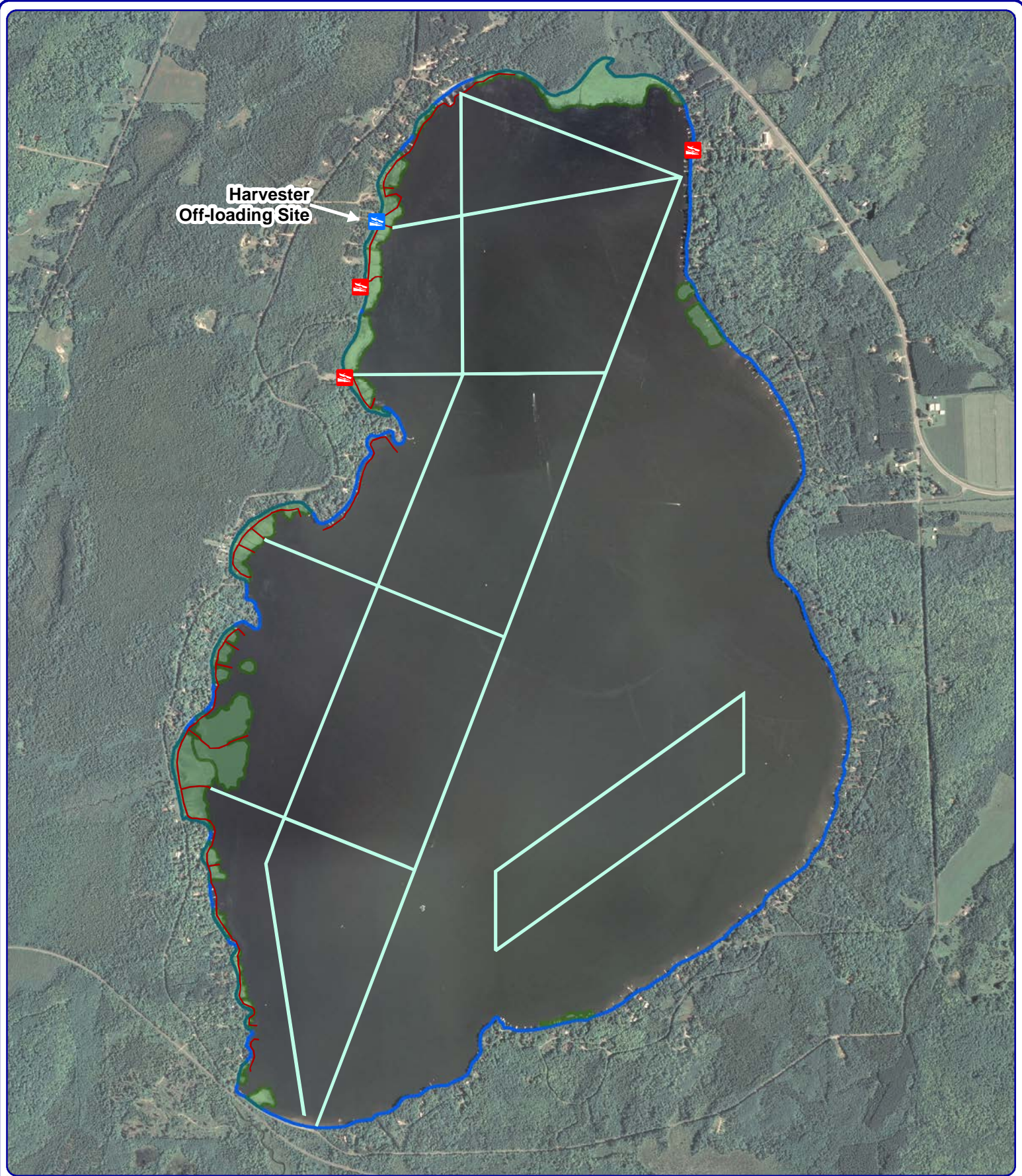


Legend

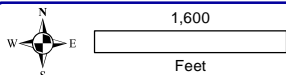
Point-intercept Survey Results

- × Too Deep, Unreachable, or No Data
- Sand
- Muck
- Rock

Map 4
Pine Lake
 Forest County, Wisconsin
Point-intercept Survey
Sediment Types

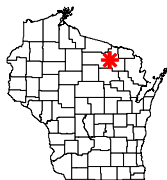


Harvester
Off-loading Site



Onterra LLC
Lake Management Planning
815 Prosper Road
De Pere, WI 54115
920.338.8860
www.onterra-eco.com

Sources:
Hydro: WDNR
Orthophotography: NAIP 2010
Map date: April 1, 2013
Filename: Map5_Pine_HarvestPlan_v3.mxd



Project location in Wisconsin

Legend

- 20ft Shoreland Navigation Lanes ~ 8.0 acres
- 30ft Common Use/Fish Lanes ~ 35.8 acres
- Floating-leaf and/or Emergent Plant Communities

Map 5
Pine Lake
Forest County, Wisconsin
**Mechanical
Harvesting Plan v3**