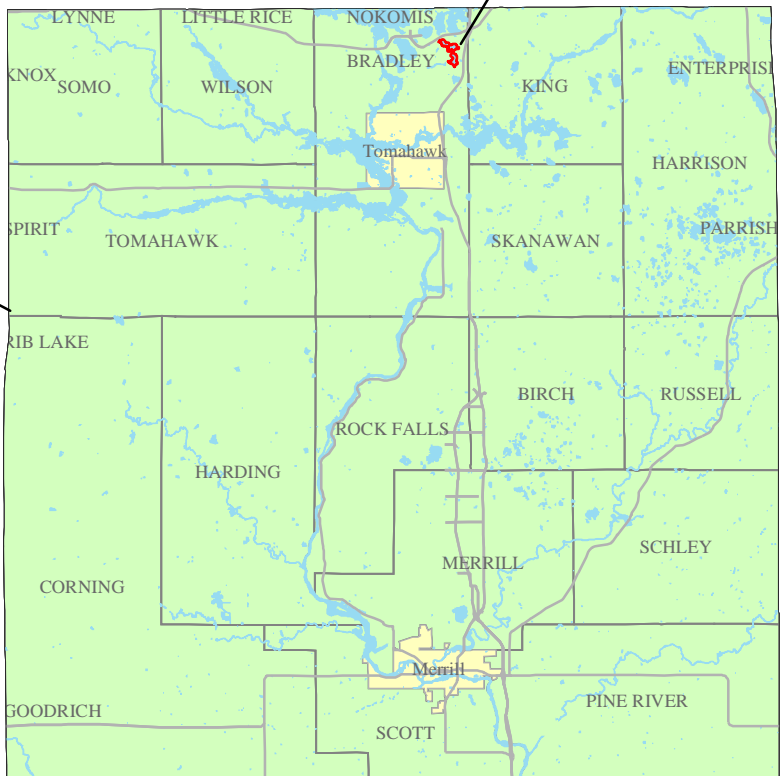




State of Wisconsin

Lincoln County



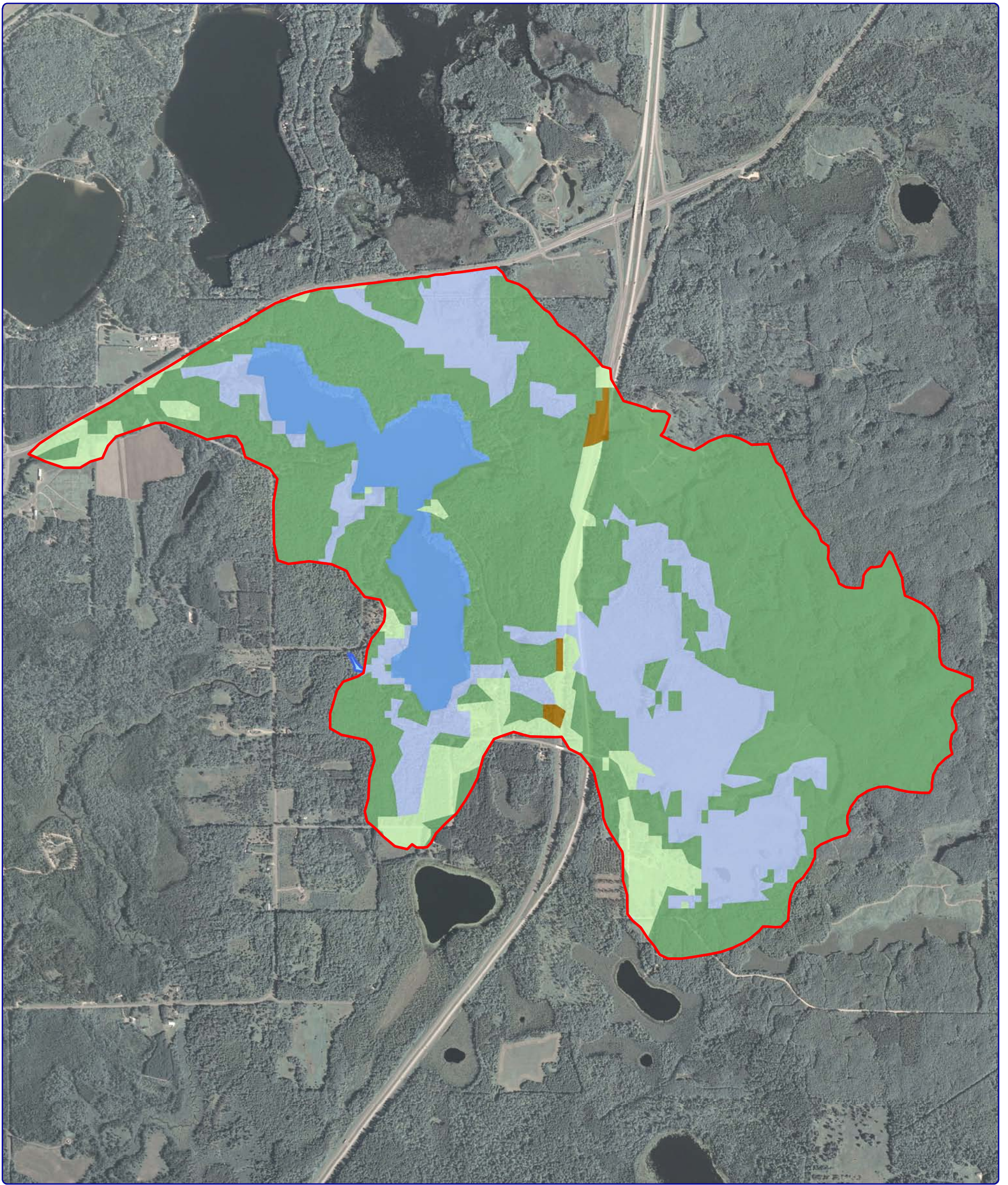
Muskellunge Lake



- Water Quality Sample Location
- Public Access



Map 1  
 Muskellunge Lake  
 Lincoln County, Wisconsin  
**Project Location &  
 Water Quality  
 Sample Locations**



Extent of large map shown in red.

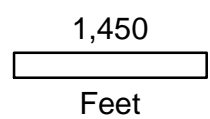
Sources:  
 Watershed: WDNR & Onterra  
 Landcover: WISCLAND  
 Roads & Hydro: WDNR  
 Orthophotography: NAIP, 2005  
 Map Date: November 6, 2008



**Legend**

-  Watershed Boundary
- Land Cover Types**
-  Pasture/Grass
-  Forest
-  Open Water
-  Wetland
-  Row Crop Agriculture

**Map 2**  
**Muskellunge Lake**  
 Lincoln County, Wisconsin  
**Watershed and**  
**Land Cover Types**



**Onterra, LLC**  
 Lake Management Planning  
 815 Prosper Road  
 De Pere, WI 54115  
 920.338.8860  
 www.onterra-eco.com

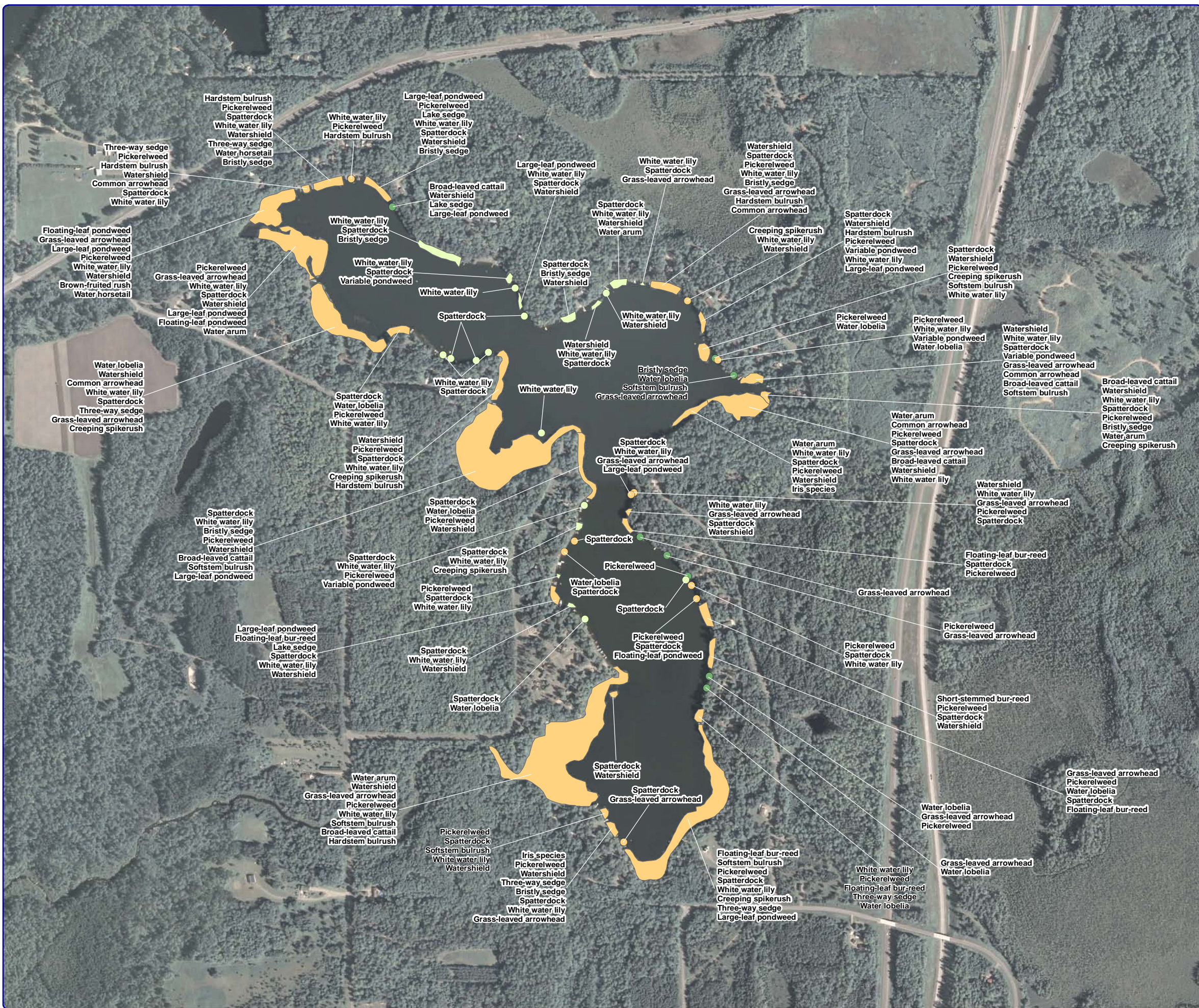
# Map 3 Muskellunge Lake

Lincoln County, Wisconsin

## Aquatic Plant Communities



Extent of large map shown in red.



### Legend

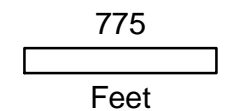
#### Small Plant Communities

- Emergent
- Floating-leaf
- Mixed floating-leaf & emergent

#### Large Plant Communities

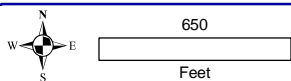
- Emergent
- Floating-leaf
- Mixed floating-leaf & emergent

Source:  
Roads & Hydro: WDNR  
Orthophotography: NAIP 2005  
Aquatic Plant Survey: Onterra, 2008  
Map Date: December 2, 2008



**Onterra, LLC**  
Lake Management Planning

815 Prosper Road  
De Pere, WI 54115  
920.338.8860  
www.onterra-eco.com





**Onterra LLC**  
 Lake Management Planning  
 815 Prosper Road  
 De Pere, WI 54115  
 920.338.8860  
 www.onterra-eco.com

Sources:  
 Orthophotography: NAIP 2005  
 Map Date: March 12, 2009  
 File Name: Musk\_watercraft\_reg\_areas.mxd

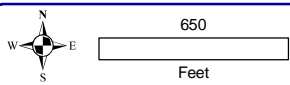
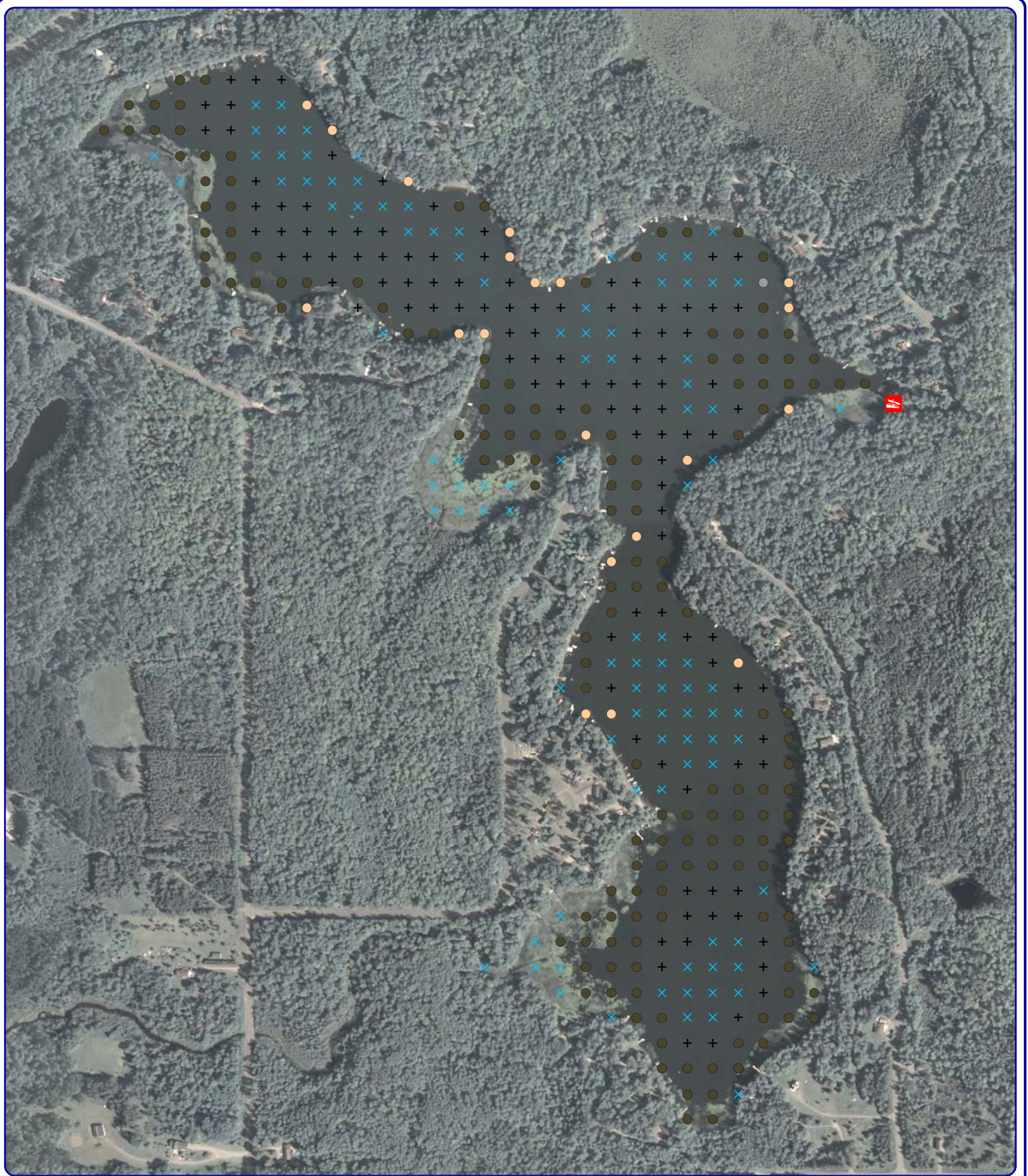


Extent of large map shown in red.

**Legend**

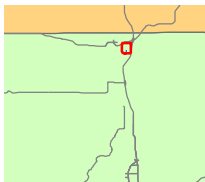
-  Motorized Boat Slow-No-Wake Area (100-ft)
-  Personal Watercraft Slow-No-Wake Area (200-ft)

**Map 6**  
**Muskellunge Lake**  
 Lincoln County, Wisconsin  
**Watercraft**  
**Regulation Areas**



**Onterra LLC**  
 Lake Management Planning  
 815 Prosper Road  
 De Pere, WI 54115  
 920.338.8860  
 www.onterra-eco.com

Sources:  
 Orthophotography: NAIP 2005  
 Map Date: March 17, 2010  
 File Name: MapX\_Musk\_PL\_Sediment.mxd



Extent of large map shown in red.

**Legend**

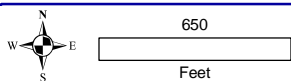
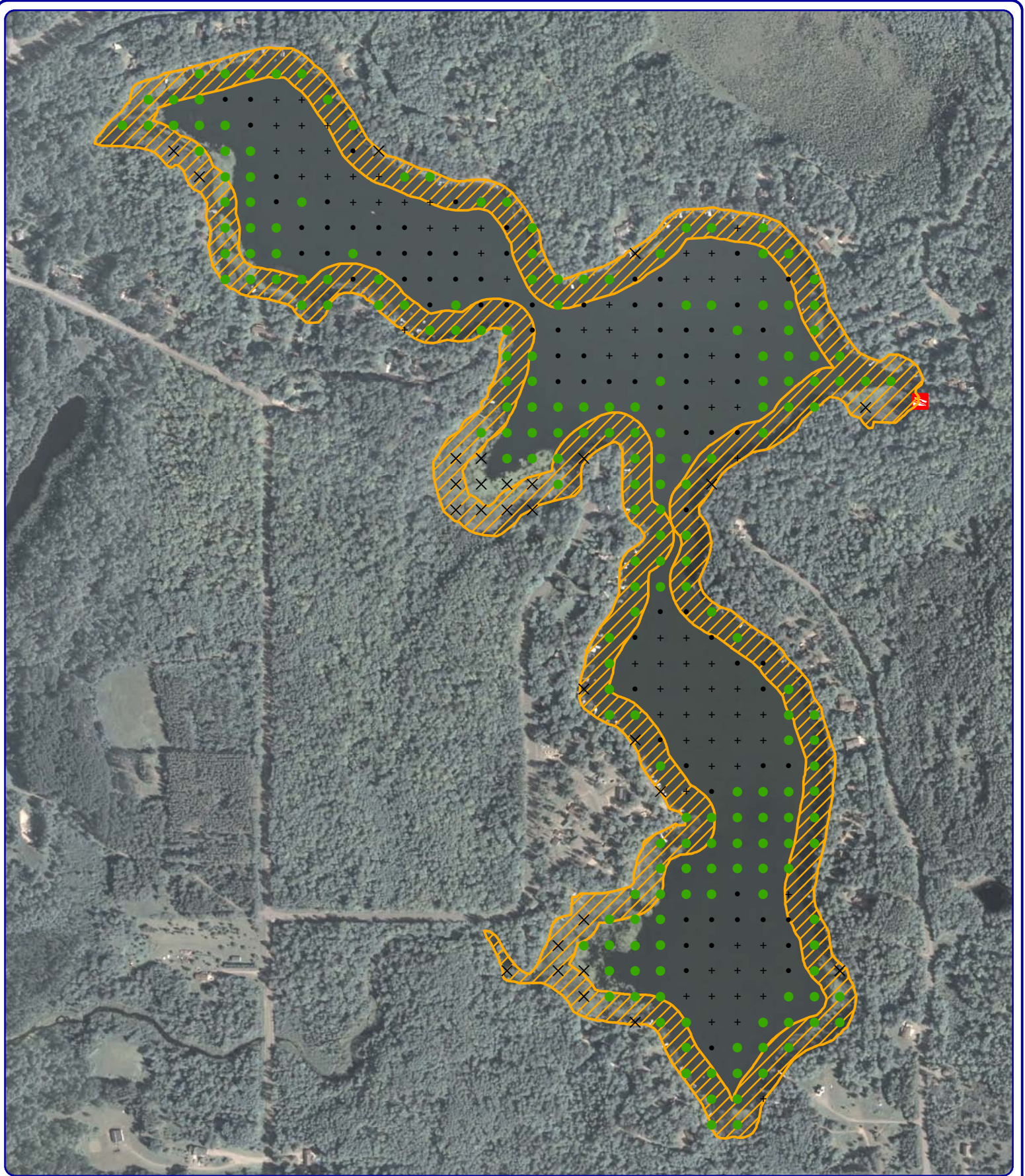
**Point-intercept Sampling Locations**

- Muck
- Sand
- Rock
- + No Vegetation
- × Non-navigable
- × Too Deep (>17 feet)

**Map 4**

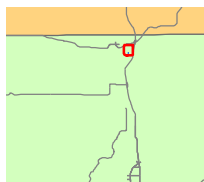
**Muskellunge Lake**  
 Lincoln County, Wisconsin

**Point-Intercept Survey  
 Sediment Types**



**Onterra LLC**  
 Lake Management Planning  
 815 Prosper Road  
 De Pere, WI 54115  
 920.338.8860  
 www.onterra-eco.com

Sources:  
 Orthophotography: NAIP 2005  
 Map Date: March 17, 2010  
 File Name: MapX\_MuskPlantPresence.mxd



Extent of large map shown in red.

**Legend**

- Point-intercept Survey Results**
- × Unreachable Location
  - + Too Deep for Plant Growth
  - No Aquatic Plants
  - Contains Aquatic Plants
  - Manual Removal Zone (150-ft)

**Map 5**  
**Muskellunge Lake**  
 Lincoln County, Wisconsin  
**Aquatic Plant Presence**  
**& Manual Removal Zone**