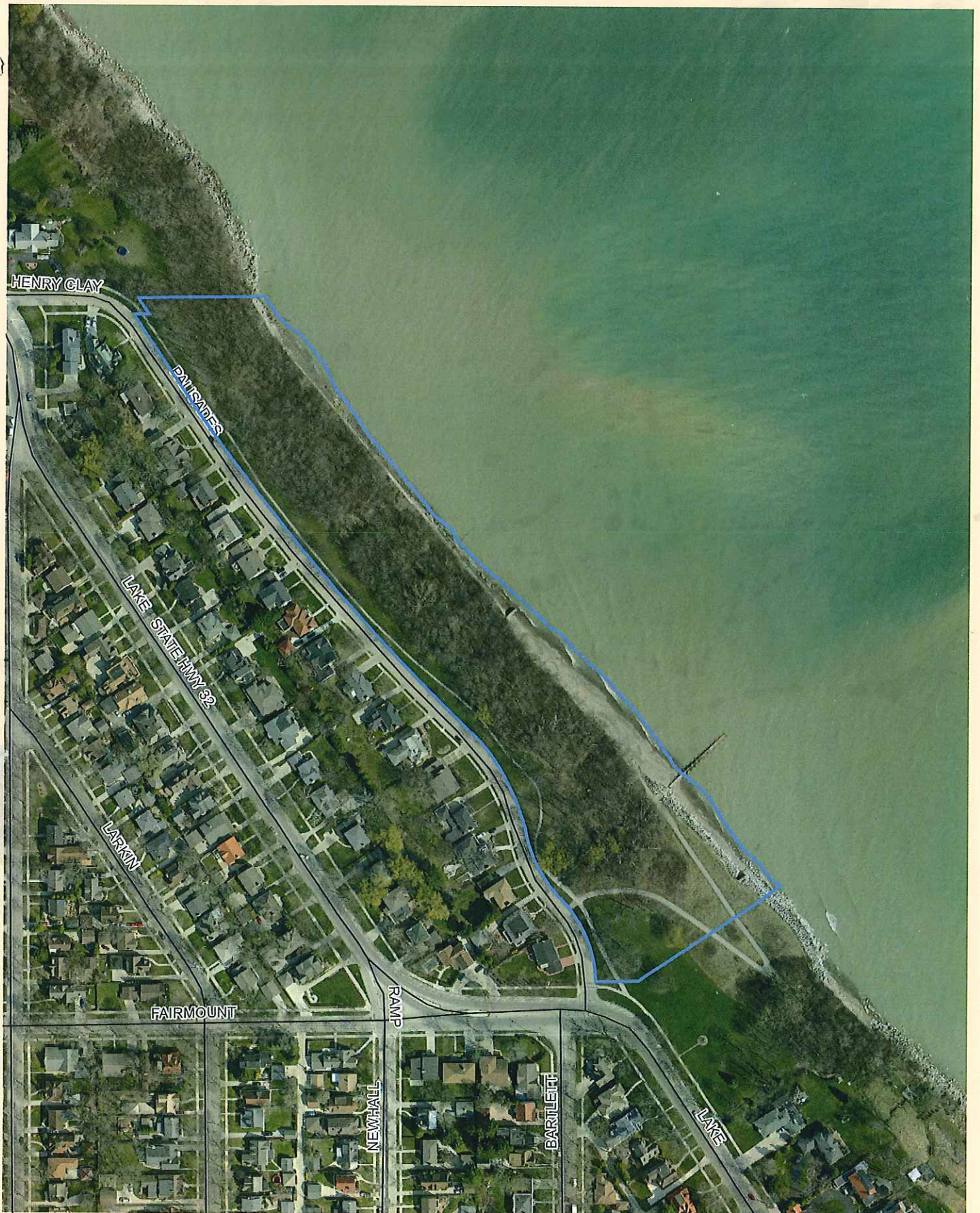


# Big Bay Park Shoreline Survey



0 80 160 320 480 640 Feet

5000 N. Lake Drive  
Whitefish Bay, WI 53217

Name: Greefkes, Cutsforth Phone: 414-257-8091 Email: Lea.Cutsforth@milwaukee.gov  
 Street Address: 9480 W. Watertown Plank Rd City: Milwaukee State: WI Zip: 53227  
 Organization: Walwaukee County Parks Waterbody: Lake Michigan Date: 6/16/13  
 Start Time: 2:00 pm End Time: 3:00 pm Start Latitude: 43 W. 4872 443 Start Longitude: -87 53. 21948073  
 Description of Start Location (ex. CTH K Bridge): Big Bay Park - start of sandy beach (south end of park)  
 End Latitude: 43 W. 6666 204 End Longitude: -87 53. 42348661  
 Description of End Location: Boulders (North end)

Species searched for: Japanese knotweed, purple loosestrife, phragmites, flowering rush, hydrilla, Brazilian waterweed, Asian clam, water lettuce, water hyacinth, water chestnut, Brittle Water nymph, Parrot Feather, New Zealand mudsnail, faucet snail, red swamp crayfish, European frog bit, African water weed, Australian stonewort other \_\_\_\_\_

Record locations of invasive species using a GPS unit (datum WGS84). Circle photo or sample if one was taken.

ID#	Species	Latitude	N Longitude	W Area	M <sup>2</sup>	(Photo)	(Sample)
ID#	Species	Latitude	N Longitude	W Area	M <sup>2</sup>	(Photo)	(Sample)
ID#	Species	Latitude	N Longitude	W Area	M <sup>2</sup>	(Photo)	(Sample)
ID#	Species	Latitude	N Longitude	W Area	M <sup>2</sup>	(Photo)	(Sample)
ID#	Species	Latitude	N Longitude	W Area	M <sup>2</sup>	(Photo)	(Sample)
ID#	Species	Latitude	N Longitude	W Area	M <sup>2</sup>	(Photo)	(Sample)
ID#	Species	Latitude	N Longitude	W Area	M <sup>2</sup>	(Photo)	(Sample)
ID#	Species	Latitude	N Longitude	W Area	M <sup>2</sup>	(Photo)	(Sample)
ID#	Species	Latitude	N Longitude	W Area	M <sup>2</sup>	(Photo)	(Sample)
ID#	Species	Latitude	N Longitude	W Area	M <sup>2</sup>	(Photo)	(Sample)
ID#	Species	Latitude	N Longitude	W Area	M <sup>2</sup>	(Photo)	(Sample)
ID#	Species	Latitude	N Longitude	W Area	M <sup>2</sup>	(Photo)	(Sample)

Data was entered into SWIMS on \_\_\_\_\_ by \_\_\_\_\_ Date \_\_\_\_\_ Name \_\_\_\_\_

Record additional comments on the back of the data sheet

Name	Noble & Cutsforth	Phone	414-257-8091	Email	lea.cutsforth@milwaukee.gov
Street Address	9480 W. Water town Plank Rd	City	Milwaukee	State	WI
Organization	MILWAUKEE COUNTY PARK	Waterbody	LAKE MICHIGAN	Zip	53227
Start Time	1:30 PM	End Time	2:00 PM	Start Latitude	43° 6.48724957
Description of Start Location (ex. CTH K Bridge)	Big Bay Park - beach (south end)	Start Longitude	-87 53.21948073	Date	9/10/13
End Latitude	43° 6.66662004	End Longitude	-87 53.42348661		
Description of End Location	Boulders (North end)				

Species searched for: Japanese knotweed, purple loosestrife, phragmites, Japanese hops, flowering rush, hydrilla, Brazilian waterweed, Asian clam, water lettuce, water hyacinth, water chestnut, Brittle Water nymph, Parrot Feather, New Zealand mudsnail, faucet snail, red swamp crayfish, European frog bit, African water weed, Australian stonewort other \_\_\_\_\_

Record locations of invasive species using a GPS unit (datum WGS84). Circle photo or sample if one was taken.

ID#	Species	Latitude	Longitude	W Area	M <sup>2</sup>	(Photo)	(Sample)
ID#	Species	Latitude	Longitude	W Area	M <sup>2</sup>	(Photo)	(Sample)
ID#	Species	Latitude	Longitude	W Area	M <sup>2</sup>	(Photo)	(Sample)
ID#	Species	Latitude	Longitude	W Area	M <sup>2</sup>	(Photo)	(Sample)
ID#	Species	Latitude	Longitude	W Area	M <sup>2</sup>	(Photo)	(Sample)
ID#	Species	Latitude	Longitude	W Area	M <sup>2</sup>	(Photo)	(Sample)
ID#	Species	Latitude	Longitude	W Area	M <sup>2</sup>	(Photo)	(Sample)
ID#	Species	Latitude	Longitude	W Area	M <sup>2</sup>	(Photo)	(Sample)
ID#	Species	Latitude	Longitude	W Area	M <sup>2</sup>	(Photo)	(Sample)
ID#	Species	Latitude	Longitude	W Area	M <sup>2</sup>	(Photo)	(Sample)

Data was entered into SWIMS on \_\_\_\_\_ by \_\_\_\_\_

Date \_\_\_\_\_ Name \_\_\_\_\_

Record additional comments on the back of the data sheet