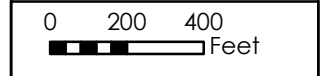
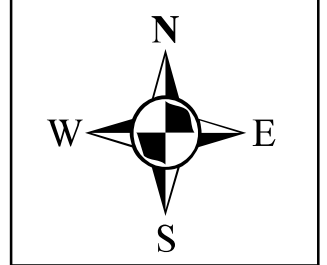


DRAWN BY SJG	CHECKED BY
-----------------	------------



**MONTGOMERY ASSOCIATES:
RESOURCE SOLUTIONS, LLC**
119 South Main Street | Cottage Grove, WI 53527
(608) 839-4422 | www.ma-rs.org

PROJECT LOCATION
Rock Lake Improvement Assoc.
Proposed Ditch Stabilization &
Marsh Restoration



SCALE
1 inch = 500 feet

PROJECT NO. 1511a	DATE Apr. 14, 2014
----------------------	-----------------------

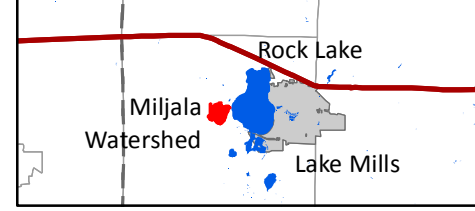
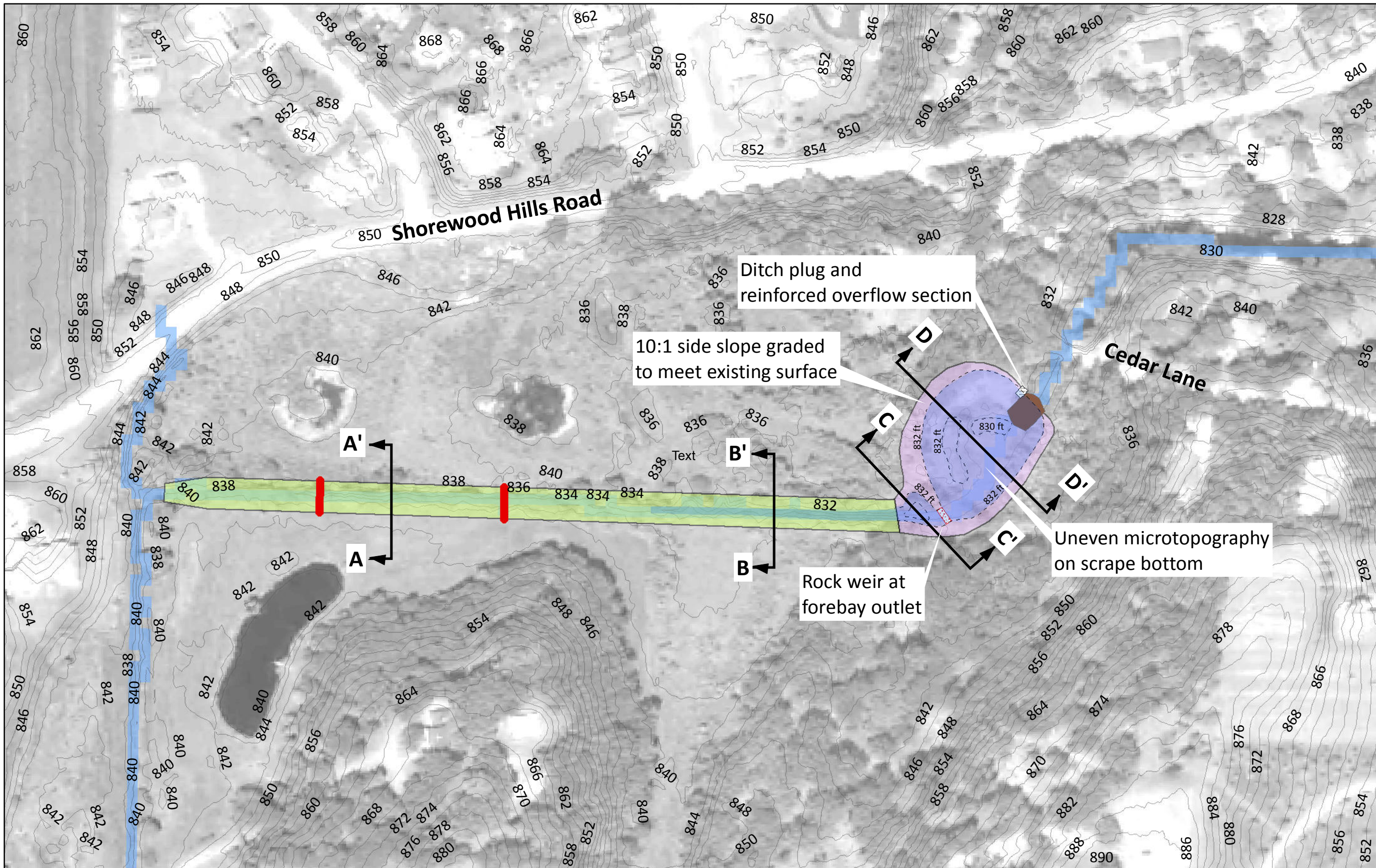


Figure C1

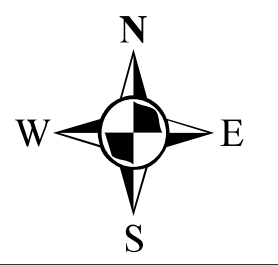
Main Map Projection: UTM Zone 16N | Locator Map Not to Scale



DRAWN BY: SJG
 CHECKED BY:

MONTGOMERY ASSOCIATES:
 RESOURCE SOLUTIONS, LLC
 119 South Main Street | Cottage Grove, WI 53527
 (608) 839-4422 | www.ma-rs.org

PROJECT LAYOUT
Rock Lake Improvement Assoc.
Proposed Ditch Stabilization & Marsh Restoration

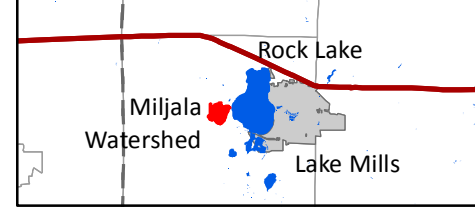


50 0 50 100 Feet

SCALE
 1 inch = 150 feet

PROJECT NO. 1511a
 DATE Apr. 14, 2014

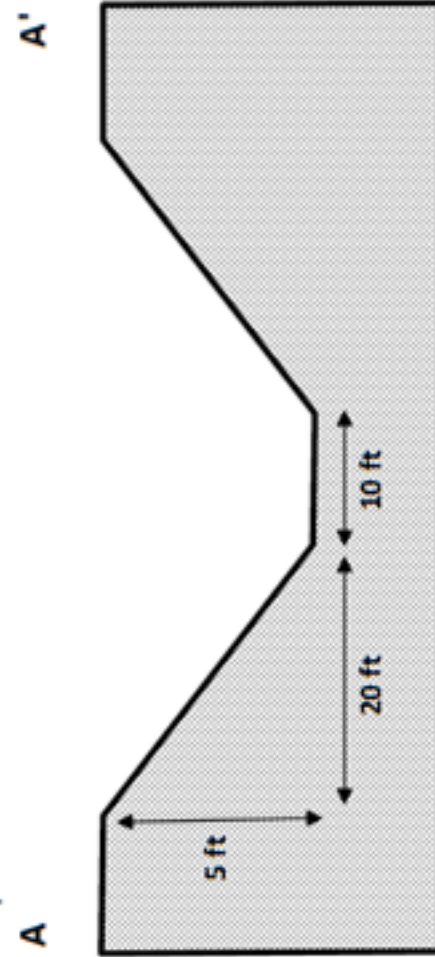
- Ditch Stabilization Grading Extent
- Rock Grade Control Structure
- Marsh Grading Extent
- Wetland Normal Water Level
- Ditch Plug
- Turf Reinforcement Mat
- Rock Weir
- Proposed Elevation Contour (Approx.)
- Existing 2-ft Elevation Contour



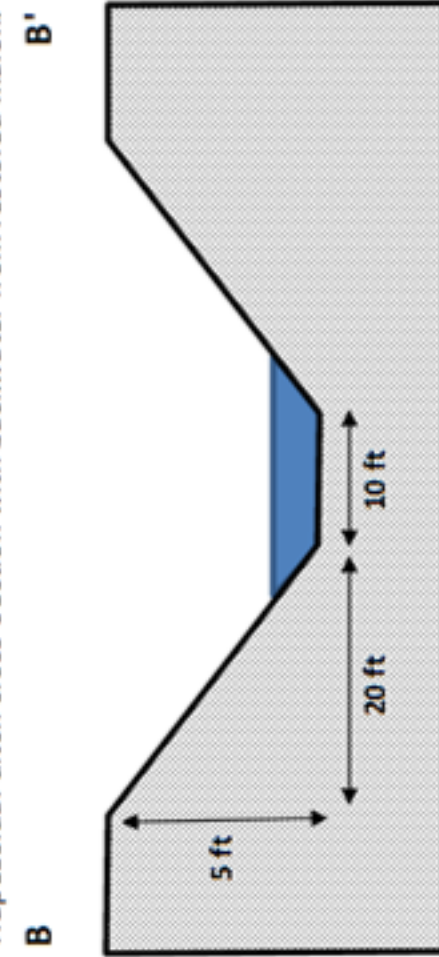
Main Map Projection: UTM Zone 16N | Locator Map Not to Scale

Figure C2

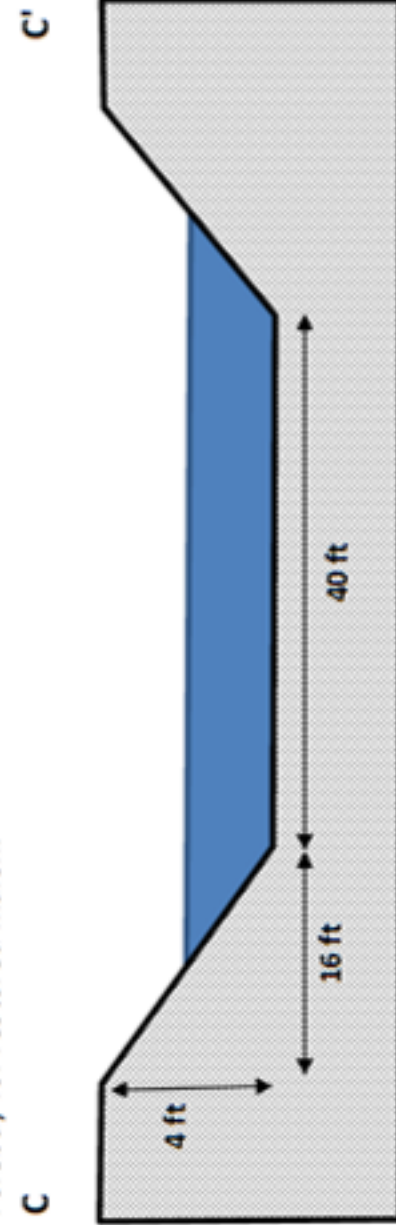
Trapezoidal ditch cross section.



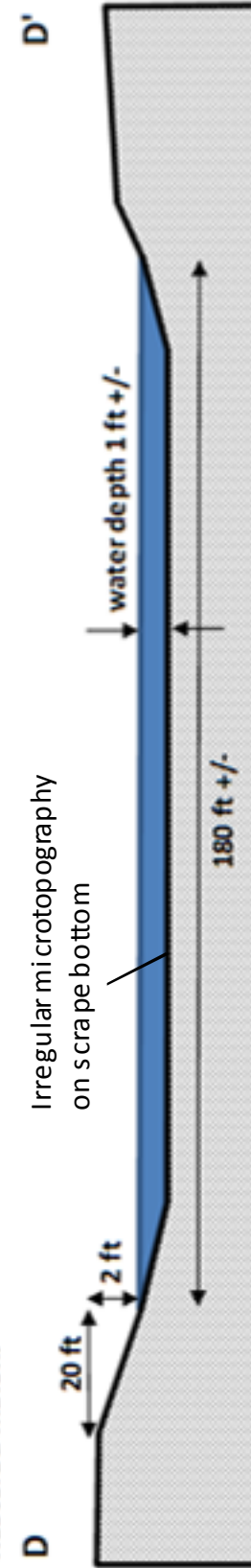
Trapezoidal ditch cross section with backwater from restored marsh.



Forebay for restored marsh.



Restored marsh.



Main Map Projection: UTM Zone 16N | Locator Map Not to Scale

DRAWN BY
SJG

CHECKED BY



MONTGOMERY ASSOCIATES:
RESOURCE SOLUTIONS, LLC
119 South Main Street | Cottage Grove, WI 53527
(608) 839-4422 | www.ma-rs.org

CROSS SECTIONS
Rock Lake Improvement Assoc.
Proposed Ditch Stabilization &
Marsh Restoration

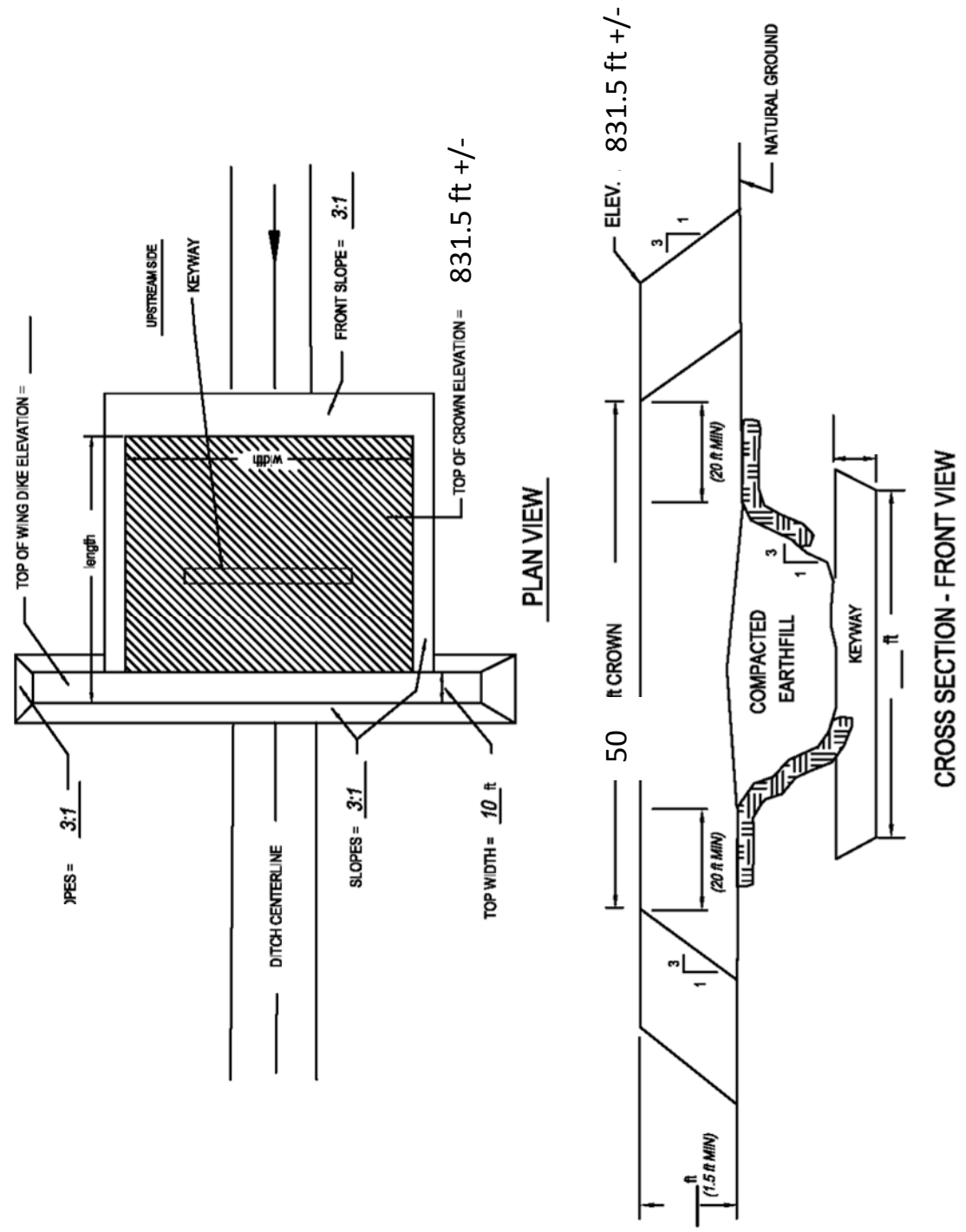
SCALE
Not to scale

PROJECT NO.
1511a

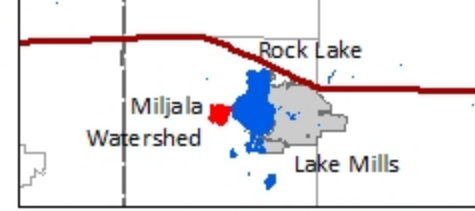
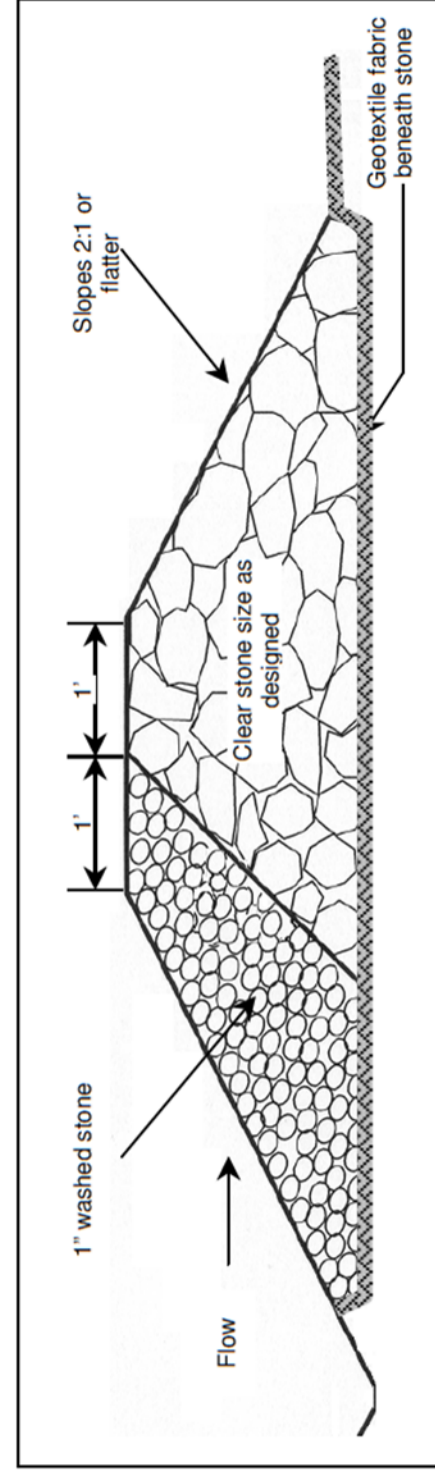
DATE
Apr. 14, 2014

Figure C3

TYPICAL DITCH PLUG DESIGN



TYPICAL ROCK WEIR DESIGN FOR FORBAY OUTLET



Main Map Projection: UTM Zone 16N | Locator Map Not to Scale

DRAWN BY: SJG
CHECKED BY:

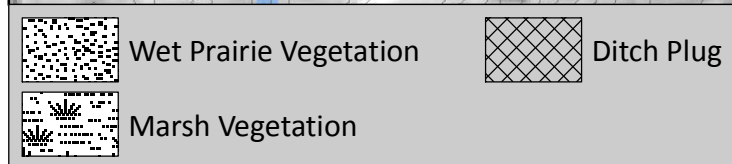
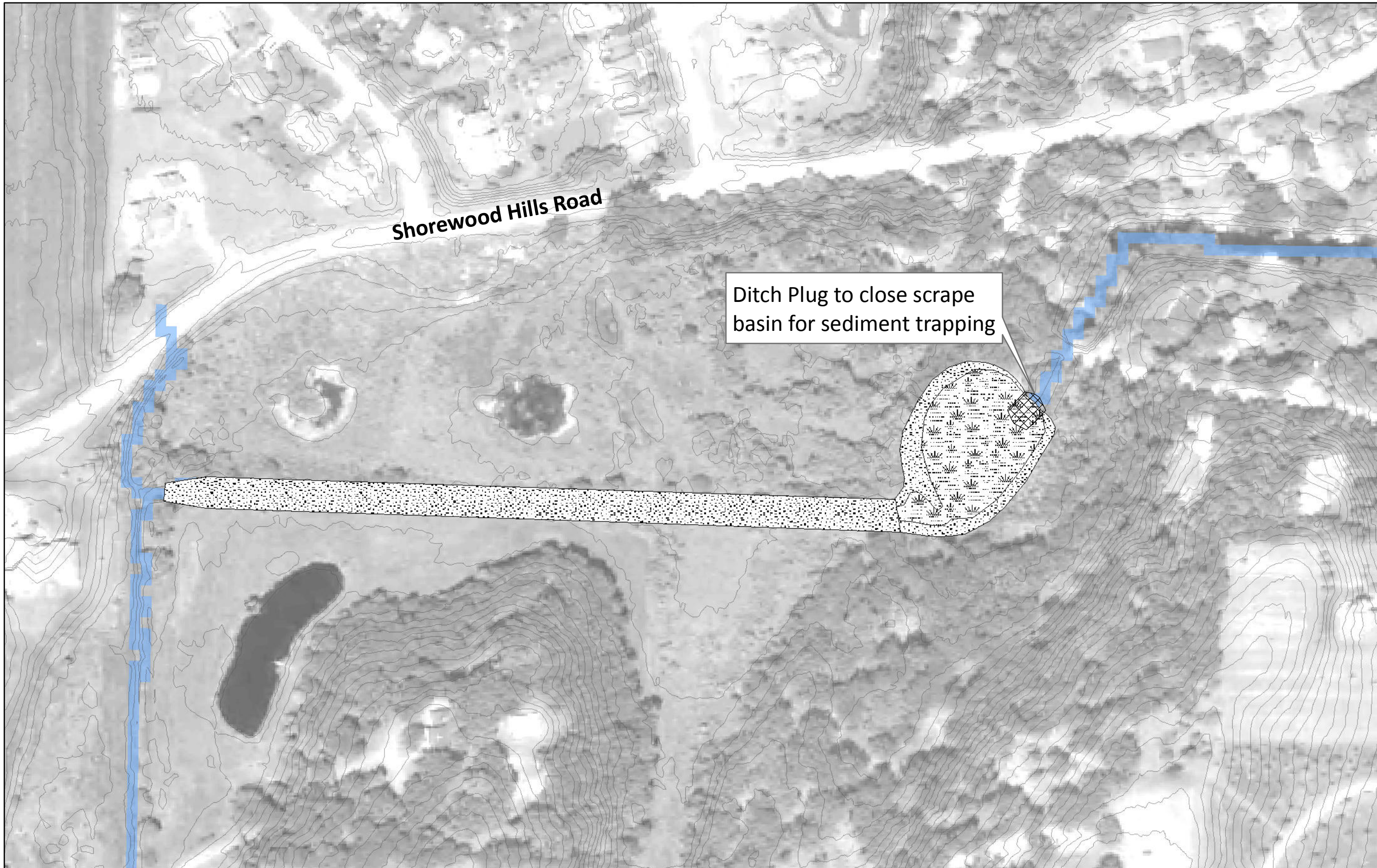
MONTGOMERY ASSOCIATES: RESOURCE SOLUTIONS, LLC
119 South Main Street | Cottage Grove, WI 53527
(608) 839-4422 | www.ma-rs.org

DETAILS
Rock Lake Improvement Assoc.
Proposed Ditch Stabilization & Marsh Restoration

SCALE: Not to scale

PROJECT NO.: 1511a
DATE: Apr. 18, 2014

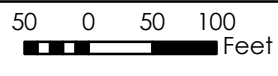
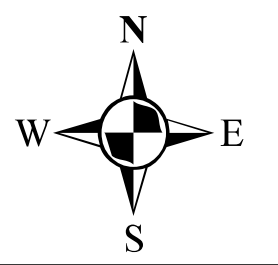
Figure C4



DRAWN BY SJG	CHECKED BY
-----------------	------------

MONTGOMERY ASSOCIATES:
RESOURCE SOLUTIONS, LLC
 119 South Main Street | Cottage Grove, WI 53527
 (608) 839-4422 | www.ma-rs.org

EROSION CONTROL & RESTORATION PLAN
Rock Lake Improvement Assoc.
Proposed Ditch Stabilization & Marsh Restoration



SCALE
 1 inch = 150 feet

PROJECT NO. 1511a	DATE Apr. 14, 2014
----------------------	-----------------------

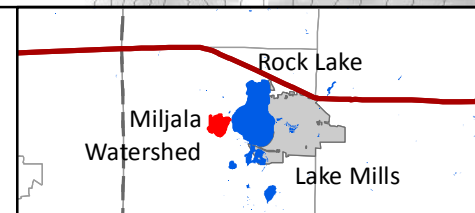


Figure C5

Main Map Projection: UTM Zone 16N | Locator Map Not to Scale