

Region NER County Brown Report Date 4/1978 Classification LAL  
 Water Body: Birch Creek  
 Discharger: Wrightstown WWTP SD #2

**If stream is classified as Limited Forage Fish (LFF) or Limited Aquatic Life (LAL), check any of the following Use Attainability Analysis factors that are identified in the classification report:**

- Naturally occurring pollutant concentrations prevent the attainment of use
- Natural, ephemeral, intermittent or low flow conditions or water levels prevent the attainment of the use, unless these conditions may be compensated for by the discharge of sufficient volume of effluent discharges without violating State water conservation requirements to enable uses to be met
- Human caused conditions or sources of pollution prevent the attainment of the use and cannot be remedied or would cause more environmental damage to correct than to leave in place
- Dams, diversions or other types of hydrologic modifications preclude the attainment of the use, and it is not feasible to restore the water body to its original condition or operate such modification in a way that would result in the attainment of the use
- Physical conditions related to the natural features of the water body, such as the lack of a proper substrate, cover, flow, depth, pools, riffles, and the like, unrelated to water quality, preclude attainment of aquatic life protection uses → habitat
- Controls more stringent than those required by sections 301(b) and 306 of the Act would result in substantial and widespread economic and social impact

**Supporting Evidence in the report (include comments on how complete/thorough data is)**

- Biological Data (fish/invert)
- Chemical Data (temp, D.O., etc.)
- Physical Data (flow, depth, etc.)
- Habitat Description
- Site Description/Map
- Other: PHOTOS

**Historical Reports in file:**

- 4/18/78 - Dennis Weisensef
- ? - Dan Uhl / Dennis Weisensef

**Additional Comments/How to improve report:**

- LAL b/c of non-point source impacts -- also lack of habitat to support a fishery - low flow
- updated & more detailed information would be useful. Need to ID primary reason for LAL class'n.

## CORRESPONDENCE/MEMORANDUM

STATE OF WISCONSIN

Date: April 18, 1978

File Ref: 3200

To: Central Office - Madison

Duane Schuettpelz

From: Dennis C. Weisensel - LMD

*Dennis C. Weisensel*

DNR

APR 20 1978

Subject: Stream Classification - Wrightstown S. D. #2 - Greenleaf -  
Brown County - Birch Creek

Birch Creek has a minimal continual spring feed flow above Norgaard's Pond. It is believed the spring feed flow is consumed through evaporation and infiltration of the pond and summer flows cease at the pond. From Norgaard's pond down to the St. Paul and Pacific R.R. tracks, the stream is noncontinuous with a marginal variance. The stream is very small and the lack of year round water inhibits the stream for use by desirable fish populations. The periods of dry conditions also prevent the establishment of any substantial macro-invertebrate population. The stream picks up non-point agricultural effects which contribute to a marginal variance.

At and below the railroad tracks, the stream appears to flow continuously although the flow is minimal. Habitat is insufficient to provide any type of fishery. The stream is influenced by agricultural runoff, which prevents the establishment of any substantial macro-invertebrate population. The creek from the railroad tracks down to the confluence with the East River was classified as marginal use.

The East River at the location has a continuous flow. The stream provides adequate pool areas for sustaining a fish and foraging minnow population. Adequate riffle and pool areas provide sufficient conditions for an acceptable macro-invertebrate population. Agricultural runoff has an effect on the river although the impact is unknown. The East River was classified as continuous--fish and aquatic classification.

Should you have any questions contact me by April 28, 1978.

DCW:ct

cc: Dan Uhl

NOTED:

Date \_\_\_\_\_

Wrightstown S.D. #2

Greenleaf, Wisconsin

Due to low influent flows, the Wrightstown S. D. #2 stabilization pond has not had a discharge for the past several years. If a discharge should occur, the effluent from the pond would enter Birch Creek about 2 miles upstream from its confluence with the East River. Birch Creek is spring fed and has flow year round above Norgaard's Pond. However, the Creek is dry most of the year below the pond and up to near Highway 57.

Recommendations

Birch Creek below Norgaard's Pond should be classified as non-continuous/marginal up to the St. Paul and Pacific Railroad tracks. From the tracks to the East River the Creek should be classified as continuous/marginal. The East River should be classified as continuous/fish and aquatic life.



Dan Uhl  
District Engineer

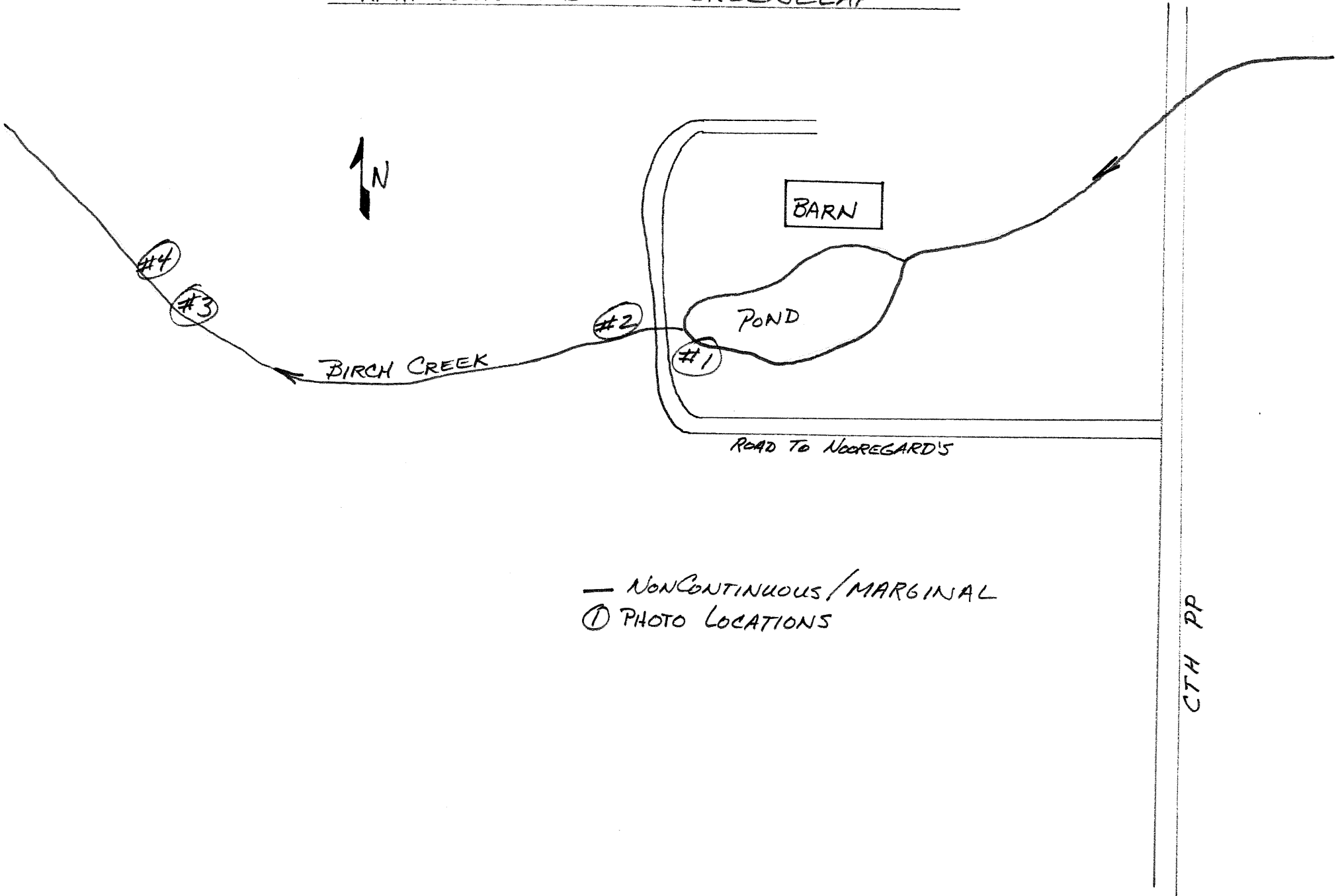


Dennis Weisensel  
District Biologist

DU:DW:sh



WRIGHTSTOWN S.D. #2 - GREENLEAF



— NonCONTINUOUS/MARGINAL  
① PHOTO LOCATIONS

CTH PP

11 11 20 21



#1 Wrightstown S.D. #2  
Above outfall,  
looking upstream

#2 Wrightstown S.D. #2  
Above outfall  
looking downstream



#3 Wrightstown S.D. #2  
25 Feet above outfall  
looking upstream



#4 Wrightstown S.D. #2  
25 feet below  
outfall looking  
downstream

#5 Wrightstown S.D. #2  
~ 1 mile below  
outfall looking  
upstream



#6 Wrightstown S.D. #2  
~ 1 mile below  
outfall looking  
downstream