

CORRESPONDENCE/MEMORANDUM

Date: May 11, 1984

File Ref: 3200

To: Jim Schmidt - WRM/2

From: Tim Doelger *Doelger*

MAY 15 1984

Subject: Golden Guernsey - Hillside

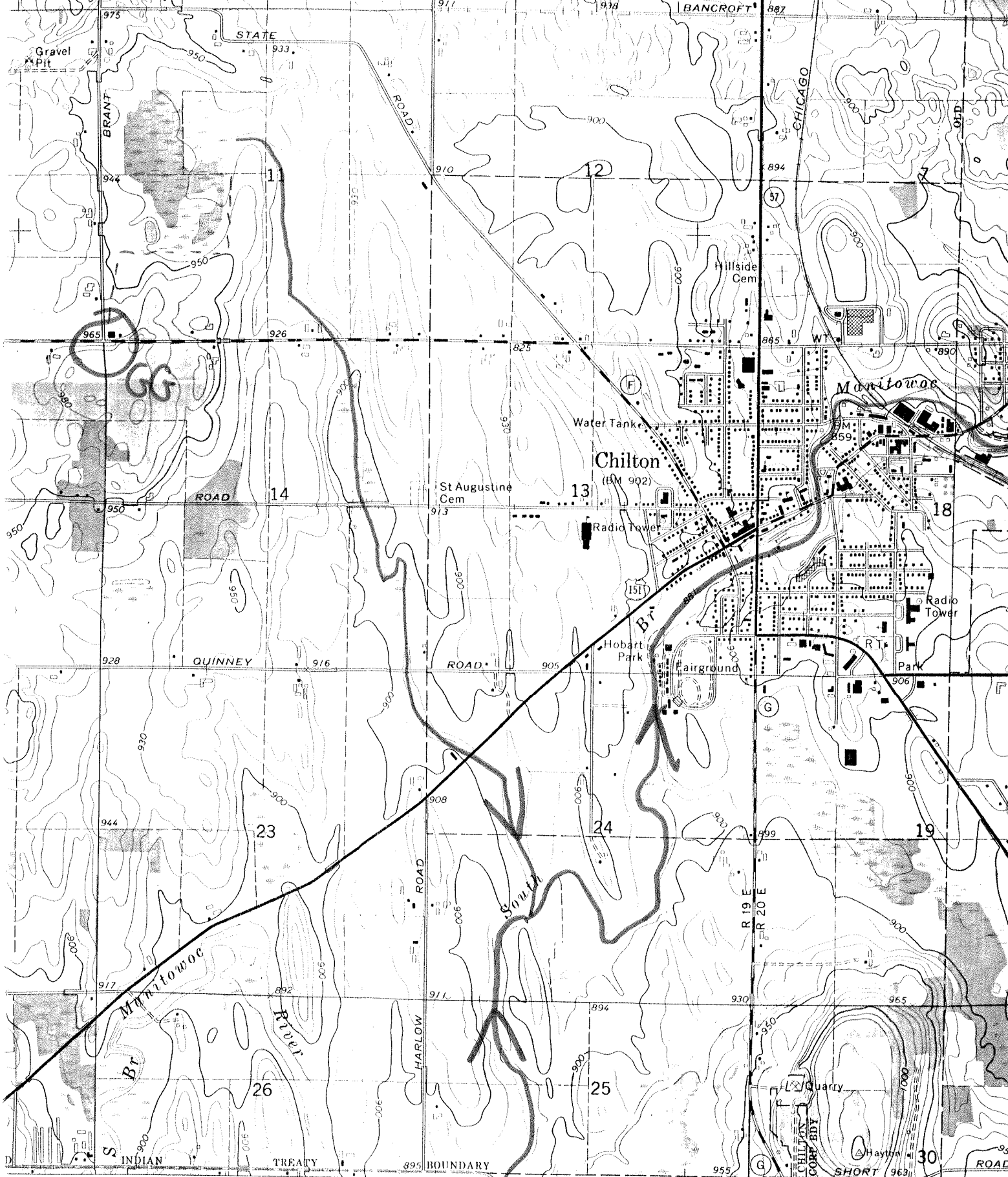
Per your request on May 9, Dan Helf and I surveyed the area around Golden Guernsey. The discharge will be from a R-0 unit capable of producing effluent with a BOD<sub>5</sub> of 10 and be directed to a roadside (CTH BB) ditch. From the outfall it will flow north for approximately 1/4 mile and then enter an agricultural drainage ditch. The Ag ditch flows north and east before entering the tributary to the south branch of the Manitowoc approximately 1/4 to 1/2 mile above CTH F.

Above CTH F the tributary is channelized and is essentially a drainage ditch, but immediately south of the highway it exhibits characteristics common to natural streams with a rock and gravel bottom, numerous meanders, and overhanging grasses for shade and cover. Since I have never seen this stream during summer I can only make assumptions as to its flow characteristics which I would judge to be low due to a lack of macroinvertebrates. Due to the distance from the outfall to this area and the capabilities of the R-0 unit marginal limits appear to be satisfactory since in effect they will be for the approximately two miles of drainage ditch and not for a stretch of stream that might be considered Intermediate or even Full Fish and Aquatic.

TD:cs

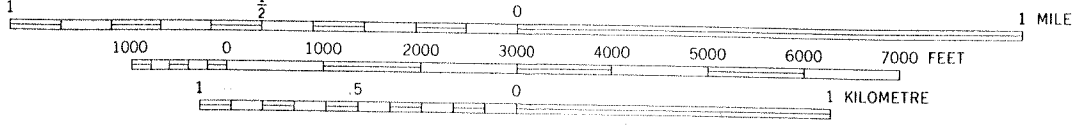
cc: Dan Helf  
Linda Vogen

*Epic - ariensis*  
*Golden Guernsey*  
*Davis*  
*Trib to*  
*So. Branch*  
*Manitowoc*  
*LAL River*  
*1984 - Prel. report*



(MARYTOWN)  
3371 1 NW

SCALE 1:24 000



CONTOUR INTERVAL 10 FEET

NATIONAL GEODETIC VERTICAL DATUM OF 1929

Primary h  
hard surfa  
Secondary  
hard surfa

CHILTON

CALUMET COUNTY

Both Chilton Canning Company and the Chilton STP discharge to the South Branch of the Manitowoc River - which has a  $7Q_{10}$  of 0.21 CFS.

RECOMMENDATIONS

The Manitowoc River should be classified as a continuous stream in the fish and aquatic life category.



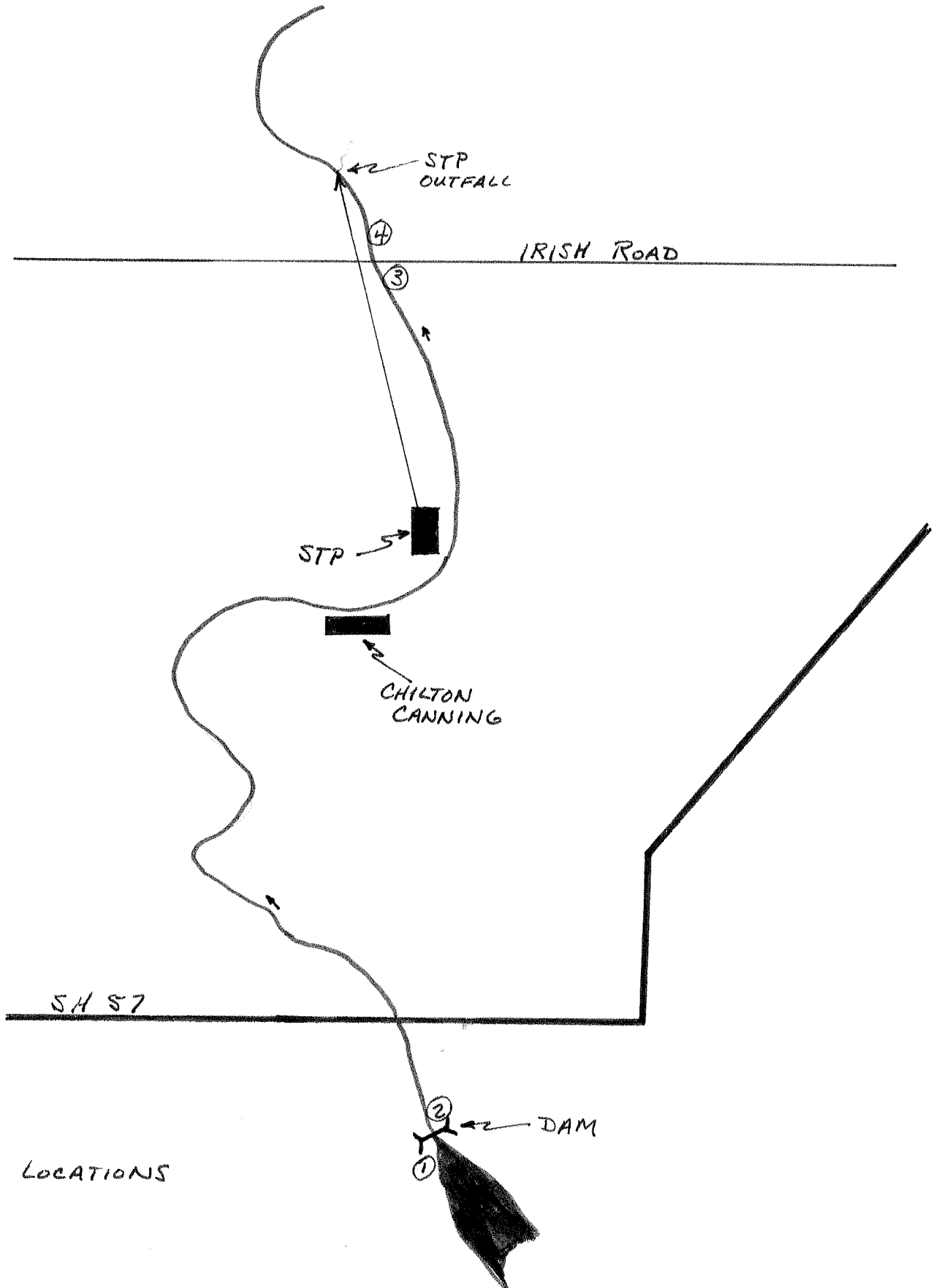
Dan Uhl  
District Engineer

DU:sh



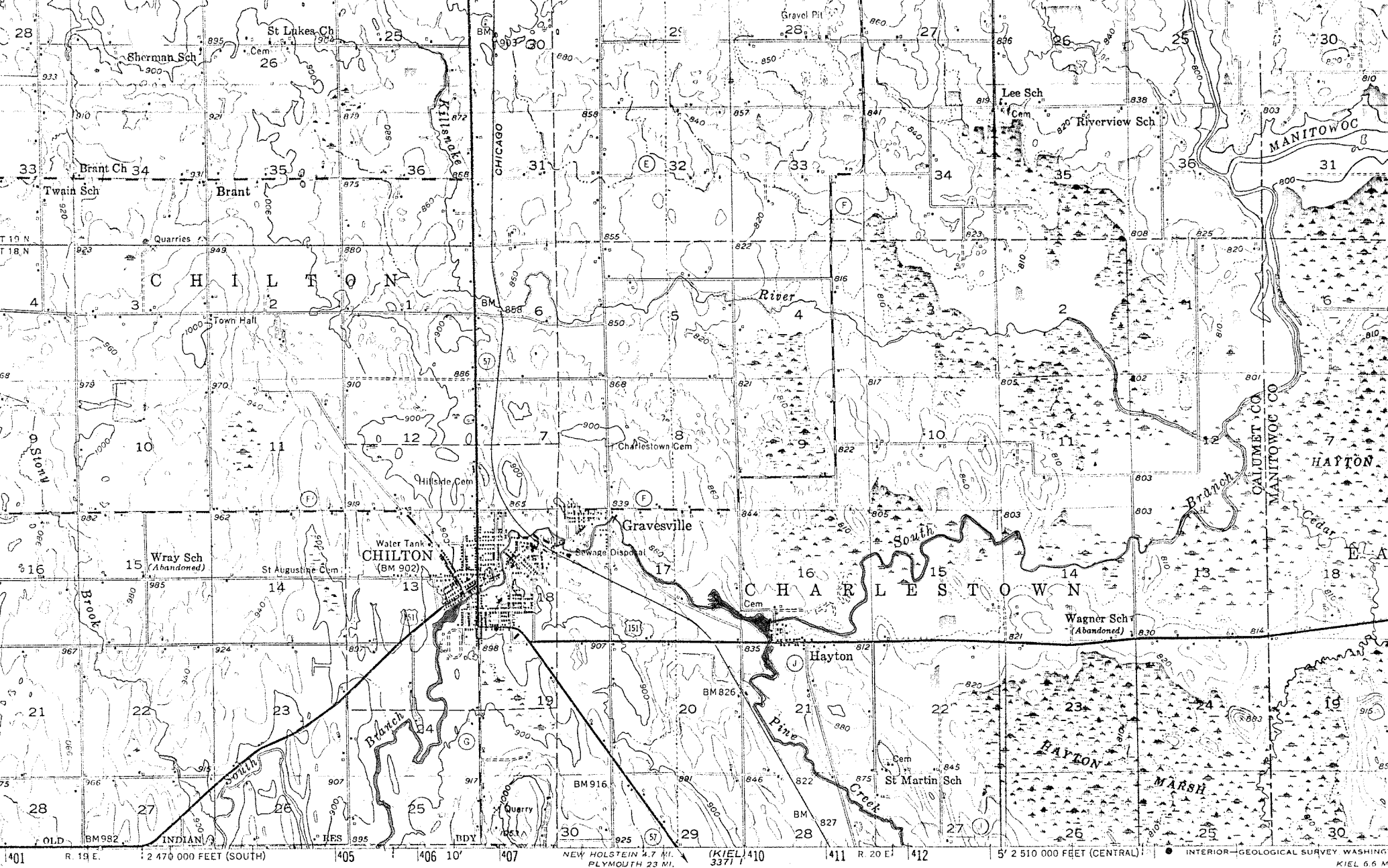
Dennis C. Weisensel  
District Biologist

CHILTON 8-13-75

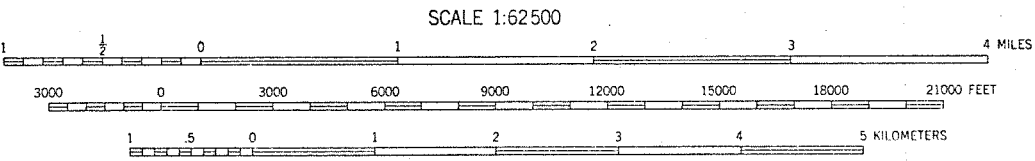
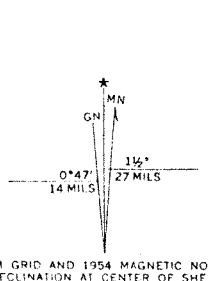


① PHOTO LOCATIONS

all  
8-28-75

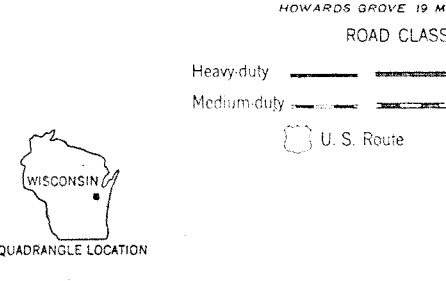


and published by the Geological Survey  
 and USC&GS  
 Aerial photographs by Kelsh plotter  
 surveys 1954. Aerial photographs taken 1951  
 n. 1927 North American datum  
 based on Wisconsin coordinate system,  
 zones  
 nsurveyed in T. 18 N.—R. 19 E.  
 9 E.  
 rsal Transverse Mercator grid ticks,  
 blue



CONTOUR INTERVAL 20 FEET  
 DASHED LINES REPRESENT HALF-INTERVAL CONTOURS  
 DATUM IS MEAN SEA LEVEL

THIS MAP COMPLIES WITH NATIONAL MAP ACCURACY STANDARDS  
 FOR SALE BY U. S. GEOLOGICAL SURVEY, DENVER, COLORADO 80225 OR WASHINGTON, D. C. 20242,



ROUGH DRAFT NO. 1

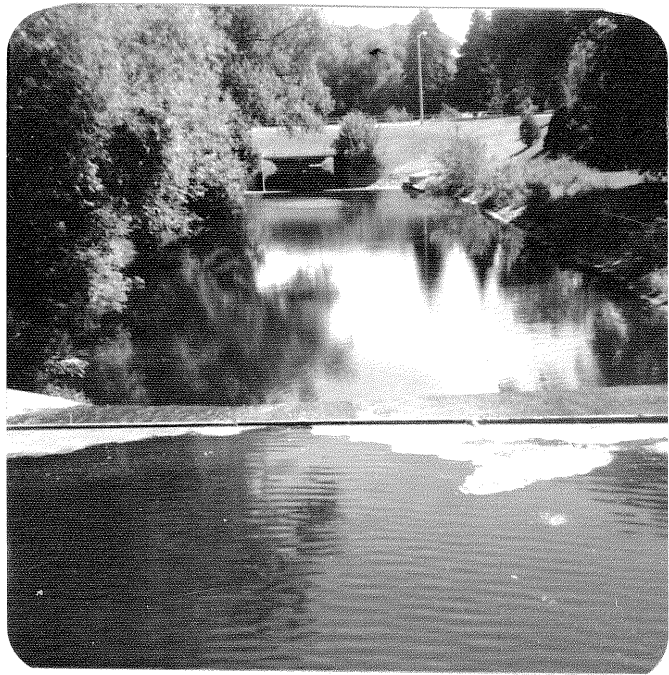
DW:jq

7-18-75

134-421

Chilton Canning Company, Chilton, Calumet County

The Chilton Canning Company discharges into the south branch of the Manitowoc River which has a  $7Q_{10}$  of 0.21 cfs about  $\frac{1}{2}$  mile below the canning company. Most of the south branch of the Manitowoc River is in an intensively formed region. Silt and sand are the major bottom types with the streambank vegetation consisting of marsh, meadow pasture, and hardwoods. Fish species include northern pike, pumpkinseed, bullhead, sucker, redhorse, and carp. Waterfowl use adjacent wetlands during spring and fall migration. The Chilton Canning Company discharges to a continuously moving stream in the fish and aquatic life category.



CHILTON AUG. 13, 1975

LOOKING UPSTREAM

ABOVE CHILTON CANNING Co  
AND STP

# 1

CHILTON AUG. 13, 1975

LOOKING DOWNSTREAM

ABOVE CHILTON CANNING Co.  
AND STP

# 2

CHILTON AUG 13, 1975

LOOKING UPSTREAM

BELOW CHILTON CANNING Co  
AND ABOVE STP

# 3

CHILTON AUG 13, 1975

LOOKING DOWNSTREAM

BELOW CHILTON CANNING Co

STP OUTFALL IS LOCATED  
JUST BEHIND THE ROCKS

IN THE FOREGROUND

# 4