

Legend

- City Limits
- Streambank Erosion Assessment Limits
- Existing City Outfalls



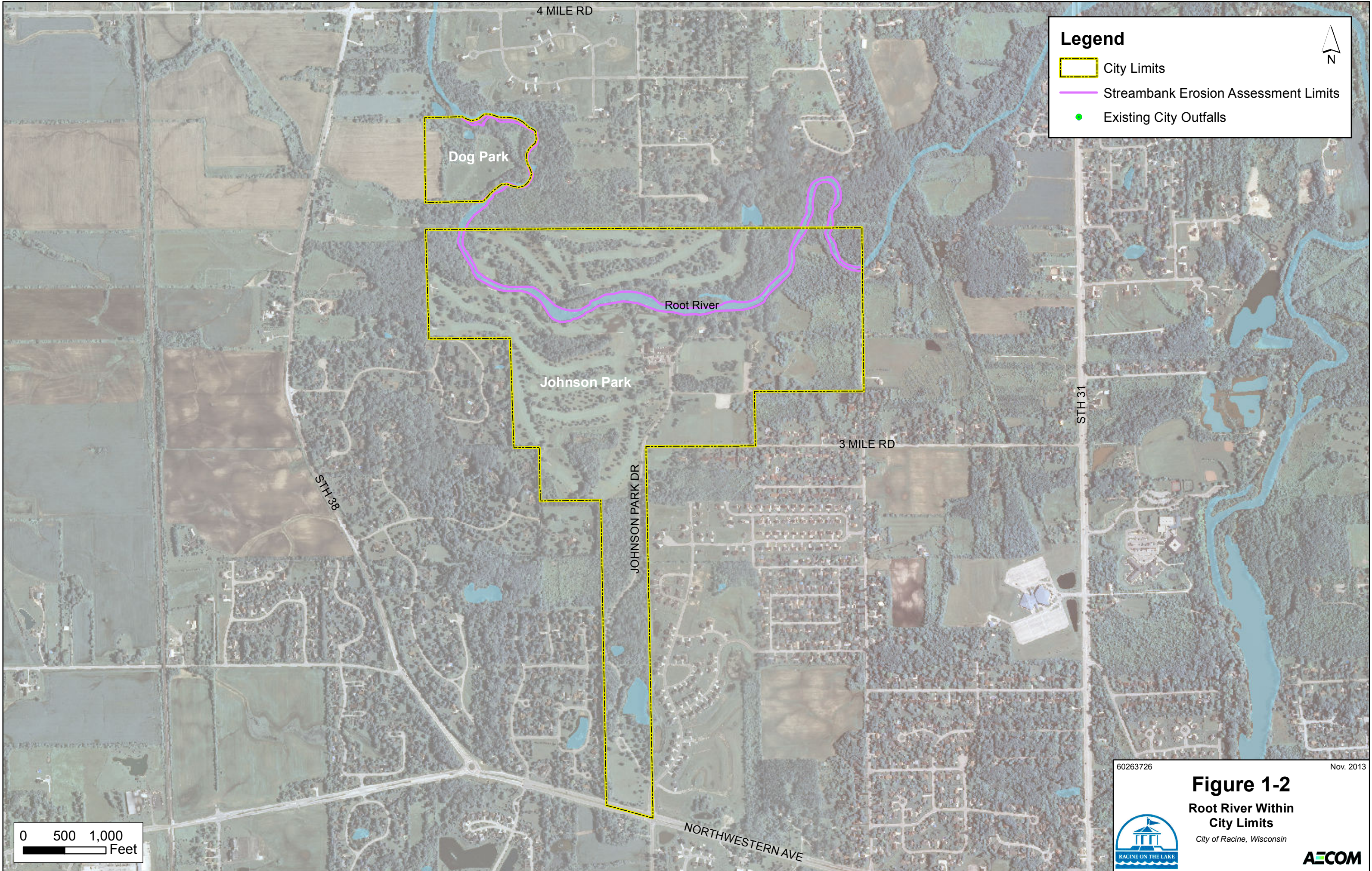
0 600 1,200
Feet

60263726 Nov. 2013



Figure 1-1
Root River Within
City Limits
City of Racine, Wisconsin





Legend

- City Limits
- Streambank Erosion Assessment Limits
- Existing City Outfalls



0 500 1,000 Feet

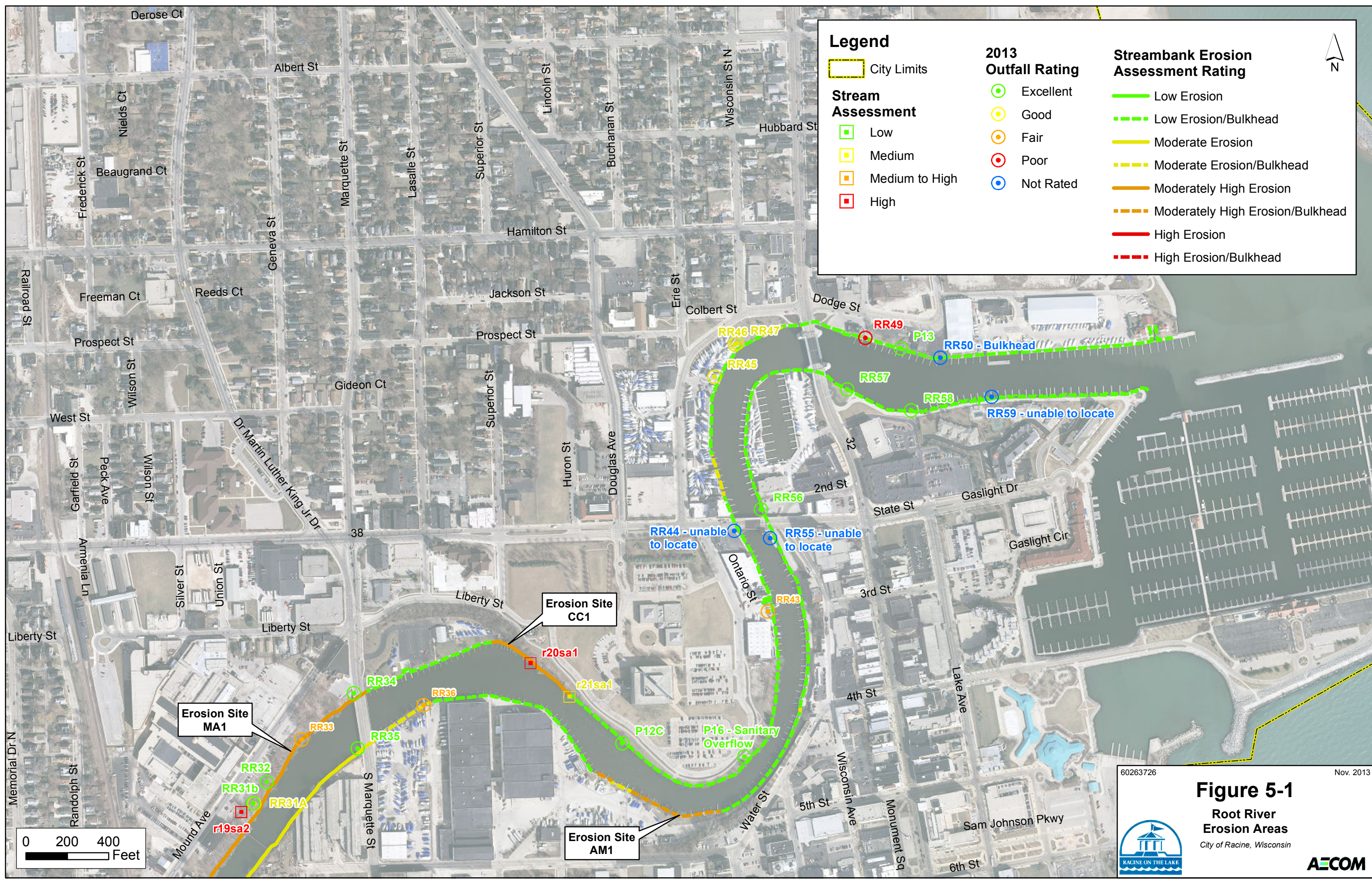
60263726

Nov. 2013

Figure 1-2
Root River Within
City Limits

City of Racine, Wisconsin

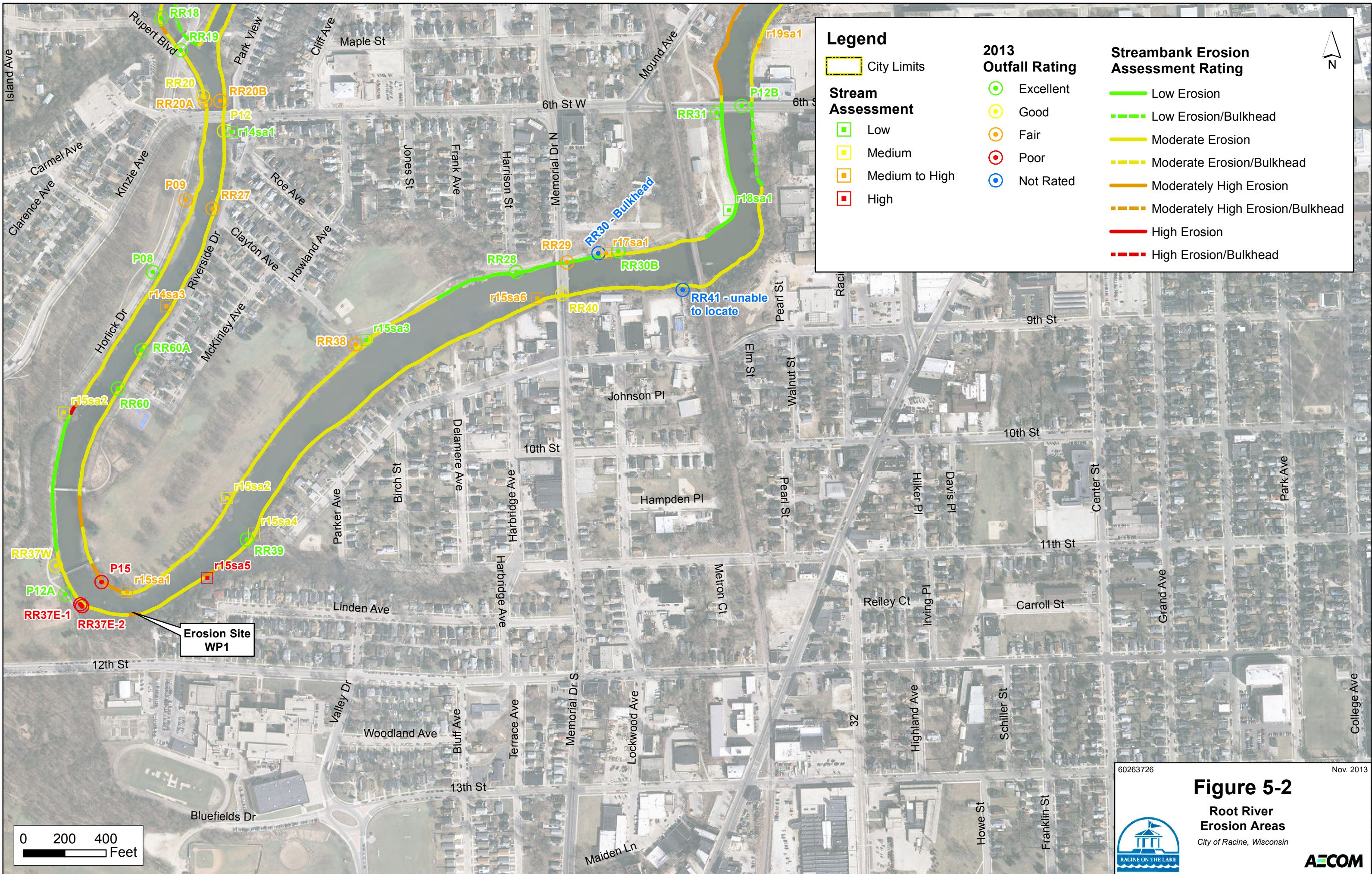




Legend



City Limits	Excellent	Low Erosion
Stream Assessment	Good	Low Erosion/Bulkhead
Low	Fair	Moderate Erosion
Medium	Poor	Moderate Erosion/Bulkhead
Medium to High	Not Rated	Moderately High Erosion
High		Moderately High Erosion/Bulkhead
		High Erosion
		High Erosion/Bulkhead

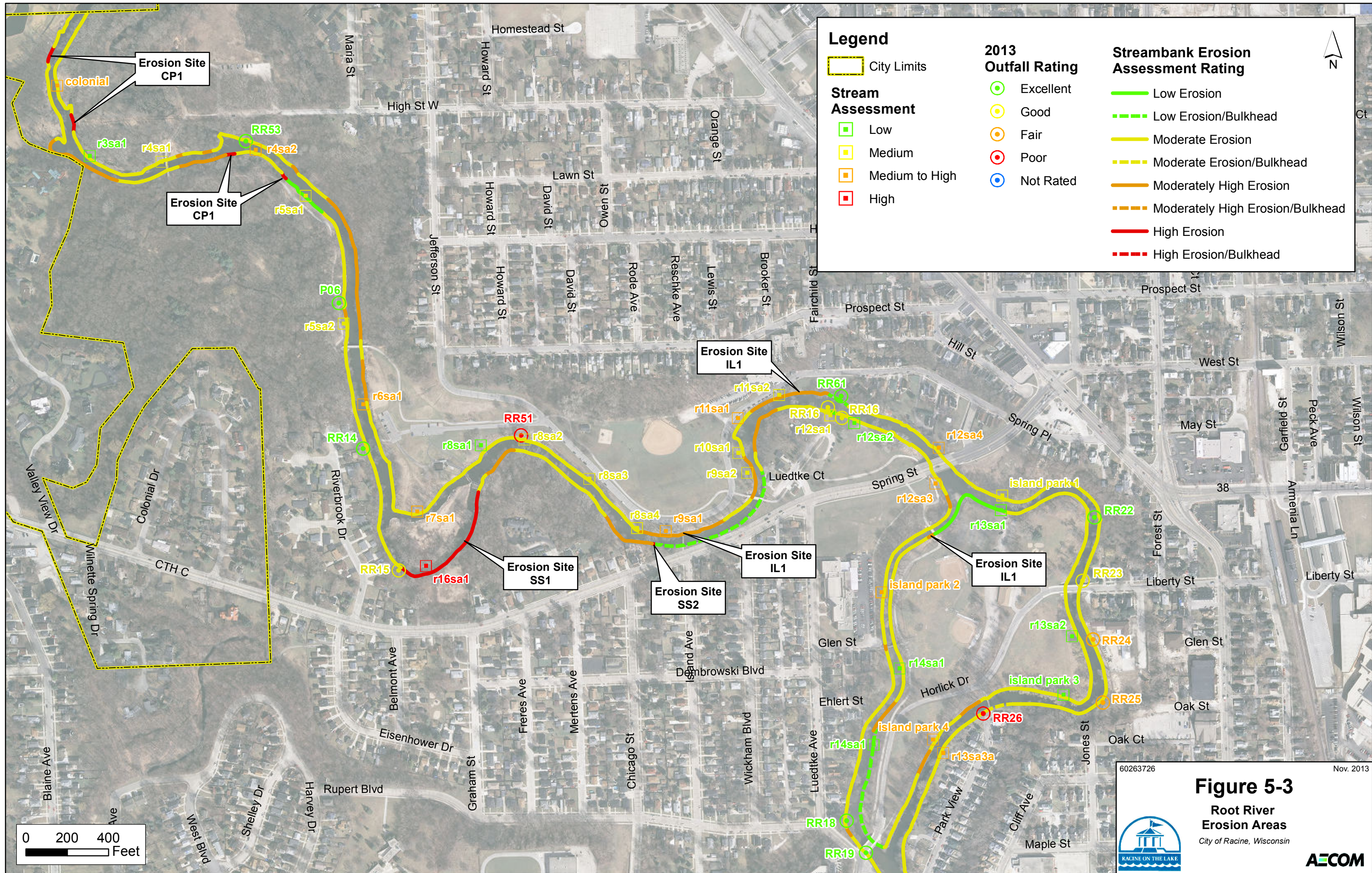
0 200 400 Feet



60263726 Nov. 2013



Figure 5-2
Root River
Erosion Areas
 City of Racine, Wisconsin



60263726 Nov. 2013

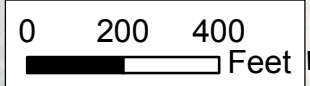
Figure 5-3
Root River Erosion Areas
 City of Racine, Wisconsin



Legend

City Limits	2013 Outfall Rating	Streambank Erosion Assessment Rating
Stream Assessment	Excellent	Low Erosion
Low	Good	Low Erosion/Bulkhead
Medium	Fair	Moderate Erosion
Medium to High	Poor	Moderate Erosion/Bulkhead
High	Not Rated	Moderately High Erosion
		Moderately High Erosion/Bulkhead
		High Erosion
		High Erosion/Bulkhead



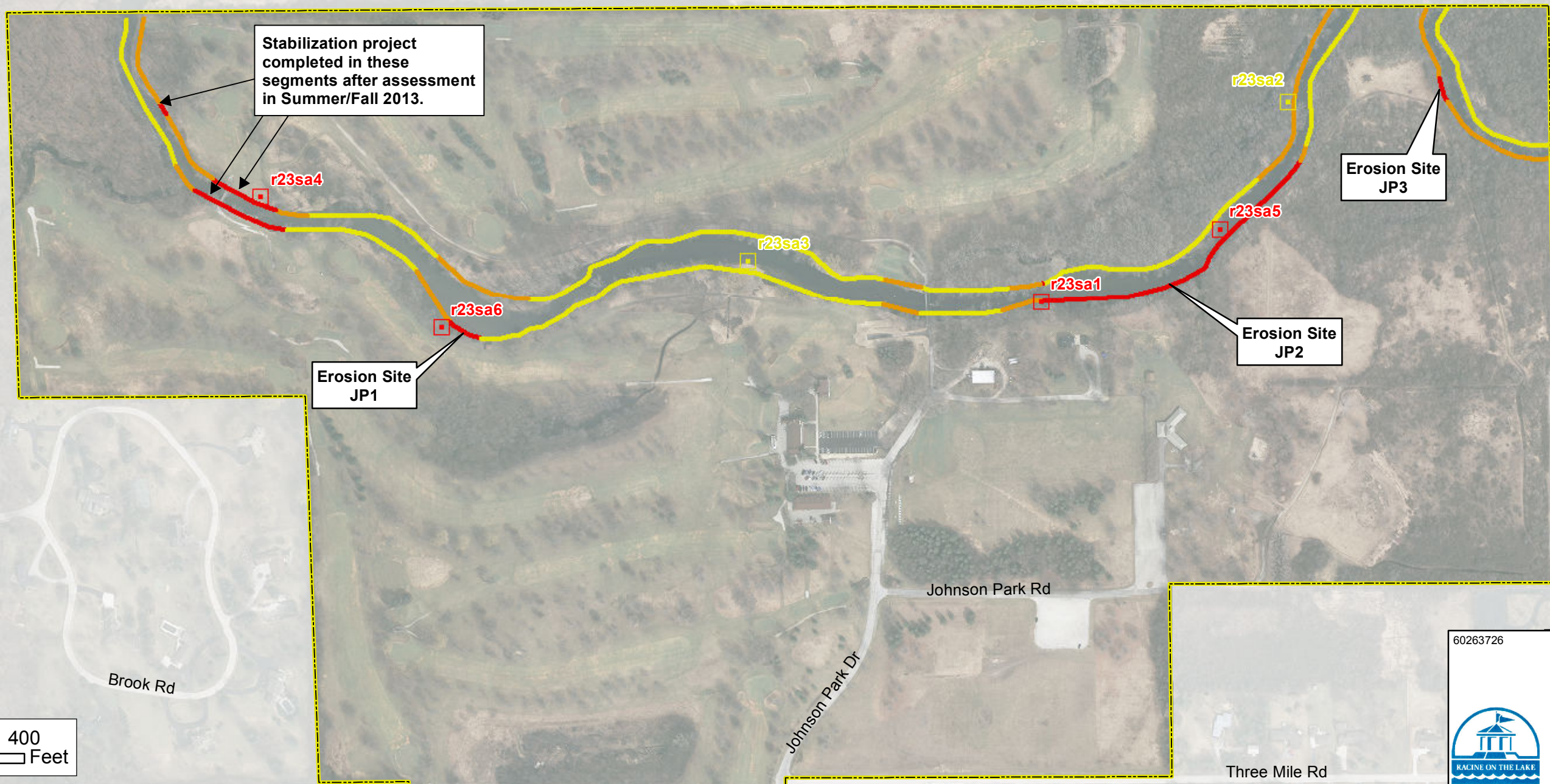
60263726 Nov. 2013

Figure 5-4
Root River
Erosion Areas
 City of Racine, Wisconsin

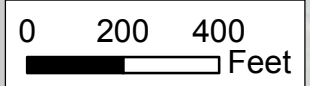


Legend

City Limits	2013 Outfall Rating	Streambank Erosion Assessment Rating
Stream Assessment	Excellent	Low Erosion
Low	Good	Low Erosion/Bulkhead
Medium	Fair	Moderate Erosion
Medium to High	Poor	Moderate Erosion/Bulkhead
High	Not Rated	Moderately High Erosion
		Moderately High Erosion/Bulkhead
		High Erosion
		High Erosion/Bulkhead



Stabilization project completed in these segments after assessment in Summer/Fall 2013.



60263726 Nov. 2013

Figure 5-5
Root River Erosion Areas
 City of Racine, Wisconsin