

Vilas County  
Aquatic Invasive Species  
Strategic Planning

Lake Protection Grant  
ALPL-001-05

Final Report



Prepared for:

The Vilas County Land & Water Conservation Committee / Department  
and the Wisconsin Department of Natural Resources

December, 2007

Prepared by:

Ted Ritter – Vilas County Land & Water Conservation Department  
Aquatic Invasive Species Project Coordinator

# Grantee

Vilas County Land & Water Conservation Committee / Department

# Project Title

Vilas County Aquatic Invasive Species Strategic Planning

# Project Number

ALPL-001-05

# Vilas County Land & Water Conservation Committee

## 2005 members:

Charles Ahlborn, Chairperson  
Kathleen Rushlow, Vice-chairperson  
Leon Kukanich  
Maynard Bedish  
Jay Verhulst  
Dave Allman  
Gene Ciszek

## 2007 members:

Charles Ahlborn, Chairperson  
Gene Ciszek, Vice-chairperson  
Leon Kukanich  
Jay Verhulst  
Jim Spring  
John Annin  
Craig Weberg

# Vilas County Land & Water Conservation Department Staff

Patrick Goggin – County Conservationist  
Carolyn Scholl – Lake Conservation Specialist  
Ted Ritter – Aquatic Invasive Species Project Coordinator

# Table of Contents

Project background .....	4
Project budget & objectives .....	4
Project accomplishments:	
At end of year #1 .....	6
At mid-point .....	15
At project conclusion .....	19
Project overall summary .....	22
Project budget vs. actual expenses .....	26
WDNR Final Grant Payment Request .....	27
WDNR Expense Worksheet .....	28
Project expense detail .....	28
Project in-kind detail .....	37
Appendix A: Project coordinator's comments .....	38

## Compact Disc contents:

- Newspaper articles
- Project Coordinator monthly reports to LWCC
- Long term plan
- Volunteer hours and mileage spreadsheet
- Non-Coordinator staff hours and mileage spreadsheet
- Project final report

**Project background:** The spread of aquatic invasive species (AIS) across Wisconsin began impacting lakes in and around Vilas County as early as 1990, but significantly more so in approximately 2001. Eurasian water-milfoil (*Myriophyllum spicatum*) and Curly-leaf pondweed (*Potamogeton crispus*), two non-native invasive plants capable of seriously degrading the quality of lakes, began spreading primarily into the eastern end of the County. Their advance corresponded with the general south to north state wide disbursement of AIS during the previous decade. Eurasian water-milfoil had become well established by 2004 in lakes in the Deerskin River and Eagle River watersheds, which include the lower portion of the popular Eagle River Chain of Lakes. Scattered infestations had also been confirmed further west in the County. Expensive, but often only marginally effective management efforts were being attempted by lake organizations on some of the infested lakes.

Zebra mussels (*Dreissena polymorpha*), an animal on the list of extremely harmful aquatic invasive species, had not yet reached Vilas County, but were well established in Lake Metonga near Crandon in Forest County, only 30 miles from the Vilas County border. Yet another animal species known as Spiny-water fleas (*Bythotrephes cederstroemi*) had invaded the Gile Flowage north of Mercer in adjacent Iron County.

As public awareness of these invaders began to increase, the concern for the impact they would have on local lakes prompted growing demands on the limited staff of the Vilas County Land and Water Conservation Department and the Rhinelander office of the Wisconsin Department of Natural Resources. With over 1,300 lakes in Vilas County, an organized approach was obviously needed to stop the spread of AIS.

The Vilas County Board of Supervisors authorized the Land and Water Conservation Committee to pursue a WDNR cost share grant for the purpose of creating a temporary (three year) employee position to coordinate AIS activities throughout Vilas County. Funding for the project was awarded in the fall of 2004 and the position was filled effective December 1.

**Project budget & objectives:** The concept of the project was to build a county-wide partnership of concerned individuals representing a wide range of interests and resources and to develop a long term AIS prevention/management strategic plan. Project duration was to be three years. The project would be overseen by the Land and Water Conservation Committee/Department, with day to day activities to be organized by a project coordinator.

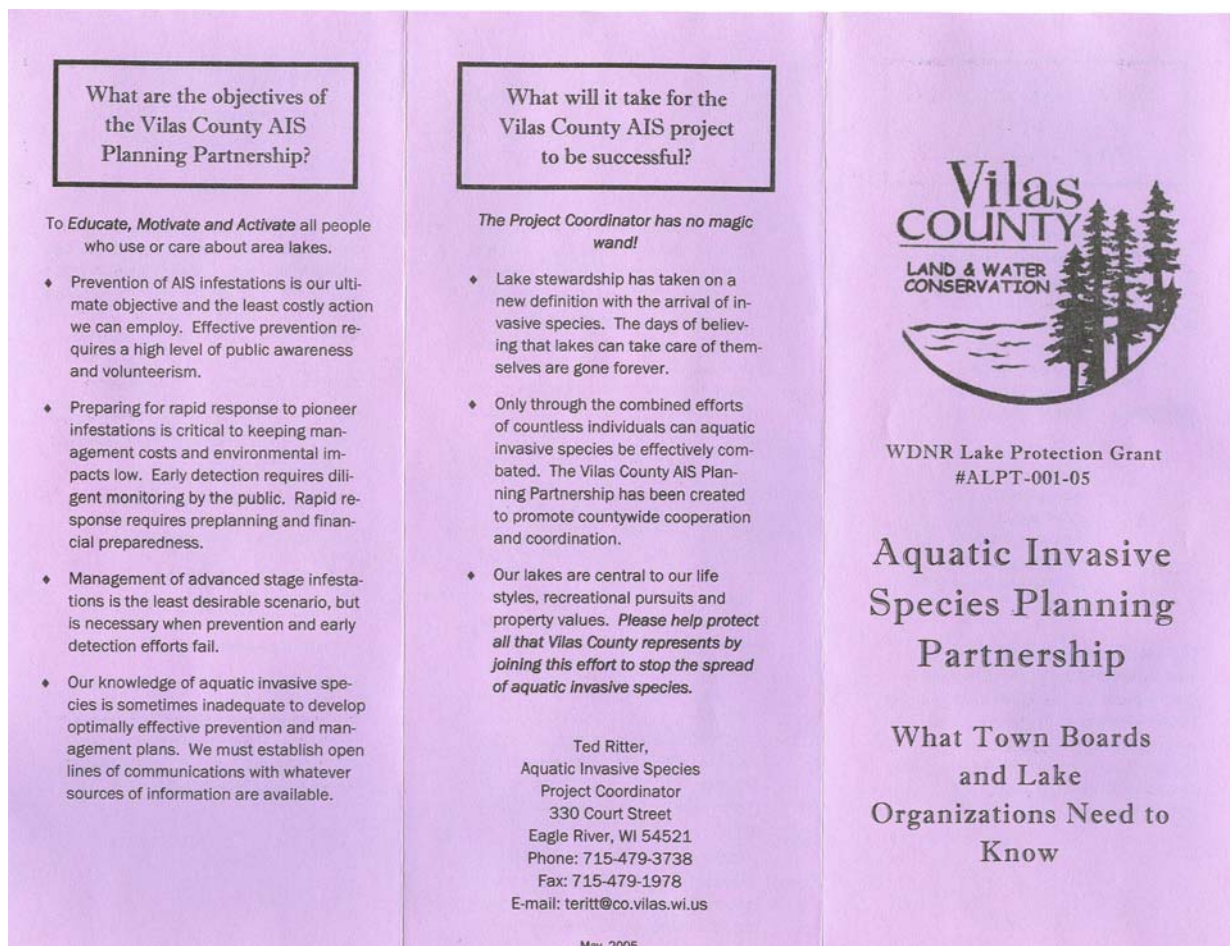
The following table contains the budget of projected expenses. Vilas County would pay these expenses over the course of the three year project, but could earn reimbursement based on the extent of in-kind volunteer time and professional services accounted for. The financial objective of the project was to qualify for full reimbursement of expenses so that Vilas County taxpayers would have a net cost of zero at conclusion of the project.

## PROJECT BUDGET




	State	County	Total
<b>Project Totals:</b>			
State Grant Funding	<b>\$158,588</b>		
Vilas County In-kind Funding		<b>\$158,588</b>	
Total Project Funding			<b>\$317,176</b>
<b>Project Expenses Detail:</b>			
Coordinator (Salary + Benefits) (FT, 3 yrs, \$14.75/hr + increases)	\$147,537		
Coordinator Training (conference travel & fees, 3 yrs)	\$ 2,316		
Coordinator In-County Travel (@ federal .375/mi, 3 yrs)	\$ 3,100		
Educational Materials			
Literature/Brochures	\$ 300		
AIS Workshop Packets	\$ 400		
Miscellaneous Materials (plan production – 50 copies, mtg supplies, volunteer supplies)	\$ 3,560		
Mailings – Reports & Information (paper, envelopes, postage)	\$ 1,375		
<b>Project In-kind Detail:</b>			
County Staff Time (Sal + Benefits): (CC & LS Ave \$27/hr, 3350hr; 3 yrs)		\$ 90,450	
Partnership Volunteers (200hr/person/3yr; \$8/hr, 32 persons) (\$1600/person/3 yrs.)		\$ 51,200	
LWCD Staff In-County Travel (70 trips, 70mi @ fed .375/mi, 3 yrs)		\$ 1,838	
Volunteer Travel (20 trips, 60mi @ fed .375/mi, 32 persons, over 3 yrs)		\$ 14,400	
Educational Materials		\$ 700	

**Year #1 project accomplishments:** The first priority of the Project Coordinator upon taking the position was to contact the 14 town boards within Vilas County to introduce the AIS project and encourage consideration of creating Town Lakes Committees. The concept of such committees was to enable representatives of local lake organizations to come together and function under the umbrella of town government. Doing so would enable participating organizations to pool resources and to accomplish objectives for the good of all local lakes that would not likely be achieved by individual lake organizations working independently. Response to the Town Lakes Committee idea was generally positive, but each town proceeded at its own pace and with unique approaches specific to its needs.

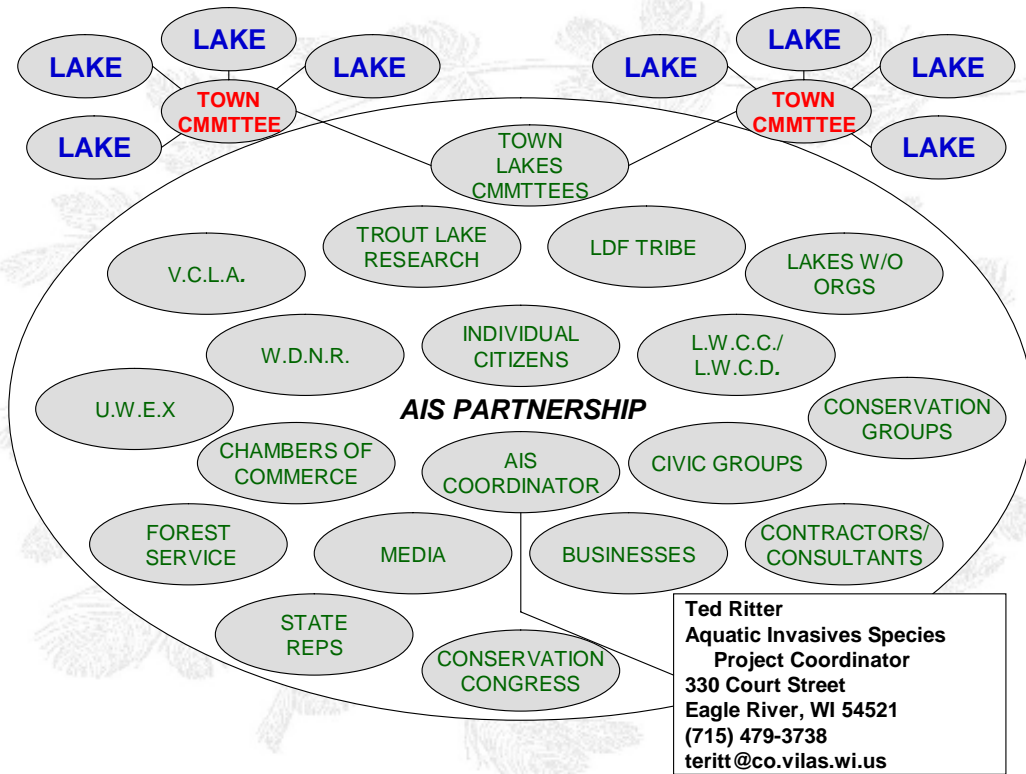
A brochure entitled **Vilas County Aquatic Invasive Species Planning Partnership – What Town Boards and Lake Organizations Need to Know** was produced and distributed throughout the county to inform people of the project and attract participation in it.





<b>Aquatic Invasive Species (AIS)</b> <b>What's the big deal?</b>	<b>Why should town boards play a role in AIS prevention and management?</b>	<b>What does the AIS Planning Partnership do?</b>
 <p>Plants such as Eurasian water-milfoil and curly-leaf pondweed develop heavy mats on the surface of lakes which interfere with recreational activities and lead to degradation of water quality and deterioration of fish habitat.</p>  <p>Animals such as zebra mussels, spiny water fleas, rusty crayfish, rainbow smelt and others can accumulate in high density colonies and severely upset the natural balance of lakes.</p>  <p>The Vilas County Board of Supervisors authorized its Land and Water Conservation Committee to pursue WDNR funding during 2004 that enabled creation of a three year temporary position (at no expense to County taxpayers) to coordinate the development and implementation of plans to manage the spread of aquatic invasive species.</p>	<ul style="list-style-type: none"> <li>◆ Town Lakes Committees, as standing units of town government, are one way of enabling local lake organizations to join efforts to address shared problems.</li> <li>◆ Grant funding for AIS projects that involve multiple lakes is easier to obtain than for individual lakes. Town board sponsorship of lakes committee grants for town wide projects not only yields better results in the awarding of funds, but such projects will likely be highly efficient and effective.</li> <li>◆ Proactive projects such as aquatic plant surveys, development of plant management plans and implementation of watercraft inspection programs at public boat landings are examples of projects that can be undertaken by town lakes committees.</li> <li>◆ 70% or more of the tax base in most Vilas County towns consists of shoreline properties. Town boards need to include lake management issues on their agendas, especially those issues that have the potential of reducing property values, such as invasive aquatic species.</li> <li>◆ The days of lakes taking care of themselves are past. Town lakes committees can keep town boards up to date on local lake management activities and needs.</li> </ul>	<p>The Planning Partnership consists of volunteers representing a wide range of interests including lake organizations, town boards, businesses, civic groups, resource agencies and other concerned individuals. Anyone with an interest in maintaining our Northwoods quality of life and protecting lake ecosystems is welcome to participate.</p> <p>The Planning Partnership is divided into action teams that concentrate their efforts on AIS activities such as:</p> <ul style="list-style-type: none"> <li>◆ Public education and awareness</li> <li>◆ Prevention &amp; early detection</li> <li>◆ Infestation management</li> <li>◆ Research (information gathering)</li> <li>◆ Ordinance development</li> <li>◆ Other activities</li> </ul> <p>These groups meet at times and places of their choosing and identify and prioritize action items that support the overall objectives of the County AIS initiative.</p>

In the meantime, meetings were scheduled to attract the public to the project and to begin building the partnership beyond Town Lakes Committees. The following organization chart was created to depict the concept of a broad based partnership representing a wide range of interests and resources:



Volunteers to the Partnership were invited to participate in a variety of ways, including serving on one or more of the following county level “Action Teams”:

1. Education and awareness
2. Prevention and early detection
3. Infestation management
4. Research
5. Ordinance development
6. Economic impact
7. Legislative
8. Strategic planning

While these action teams provided for some organizational structure during the Partnership’s infancy, none survived long term. Some of the teams accomplished their objectives, such as the planning team completing a long term strategic plan, while others gradually dissolved and disappeared.

The following report was prepared subsequent to the Partnership’s end of year #1 annual meeting and captures the primary accomplishments of the first year:





**VILAS COUNTY LAND & WATER  
CONSERVATION DEPARTMENT**

**AQUATIC INVASIVE SPECIES (AIS)  
PLANNING PARTNERSHIP**

330 Court Street  
Eagle River, WI 54521  
(715) 479-3738

**YEAR ONE IN REVIEW  
DECEMBER 6, 2005**



The Partnership celebrated the beginning of year two by looking back on the accomplishments of the first year at a day long meeting in Manitowish Waters on December 6, 2005. The following summarizes the many presentations made throughout the day by people from every corner of the County and beyond.

**LAC DU FLAMBEAU TRIBE OF LAKE SUPERIOR CHIPPEWA:** Water Resource Specialist, Gretchen Watkins, introduced a draft version of the 15 minute AIS educational video that she had coordinated creation of after obtaining grant funding for the video. Ted Ritter had provided limited assistance to the project on behalf of the Vilas Partnership and is featured in the video. **The final version will be available on DVD. Information on its availability will be shared at a later date.**

**THREE LAKES** (Oneida County): Tom Harris of the Three Lakes Waterfront Owners Association shared the results of the 2005 watercraft inspection project that had been conducted on the upper lakes of the Eagle River Chain in Oneida County. The Three Lakes project had been conceived approximately the same time that the Vilas AIS Partnership was being formed and was the first large scale volunteer based inspection program in the area. It is serving as a model for the Lac du Flambeau and Manitowish Waters large scale projects for which grant funding will be sought in the upcoming grant cycle. **Tom emphasized the importance of using a paid coordinator to organize and oversee the volunteer teams and of soliciting public assistance in monitoring lakes for new invasive plant infestations.** Plans are in place to repeat the project again in 2006.

**SAINT GERMAIN:** Chuck Thier explained the activities of the Saint Germain Town Lakes Committee since its creation in mid-2003. A cost share grant was obtained to fund a plant survey on eight town lakes. All the lakes were found to be in excellent condition with good plant diversity and desirable plant densities. No exotic invasive plants were found other than the two already known to exist in Little Saint Germain Lake. A management plan is in place for those infestations. **Plant management plans are being developed for all lakes in the project to ensure that the present healthy status of the lakes will be maintained.** A town wide watercraft inspection program was activated for the 2005 boating season and will be repeated in 2006. The Town Lakes Committee has emphasized AIS education in the Town Lakes Fairs it has conducted. Several AIS public awareness actions were employed during the past year including placing AIS labels on bait containers and fishing licenses sold at local retailers having an AIS message printed on local plastic grocery bags. More educational outreach ideas are being considered for 2006.

**LAC DU FLAMBEAU:** Guy David reported that Lac du Flambeau was the first community to establish a Town Lakes Committee since initiation of the Vilas AIS Partnership. The committee has concentrated its initial efforts on education, establishing a credible working relationship with the Town Board and the Tribe, and developing the details of a large scale watercraft inspection program to be implemented in 2006 pending approval of grant funding. The committee has been acknowledged by the Lac du Flambeau Town Board for its aggressive efforts to keep invasive species out of area lakes and **the Board has agreed to provide at least temporary funding for**

**the local cost share of grant funded projects until such time that full grant reimbursement is achieved.**

**WASHINGTON:** Jim Spring, Town Board Chairman and co-chair of the committee of town lakes, reported that this group was **successful in soliciting financial commitments from the towns of Lincoln and Cloverland and the City of Eagle River to partner in the local cost share of conducting plant surveys and developing plant management plans on the Deerskin River, the lakes of the lower Eagle River Chain and some Cloverland lakes.** A 75% WDNR cost share grant has been awarded for that project. Work will commence in 2006. In the meantime, another project is being considered to survey plants and develop management plans for Washington lakes not part of the Eagle River chain. A limited number of Forest County lakes in the same watershed are being considered for inclusion in that possible project. **The committee is also considering establishing a watercraft inspection program during 2006 with the emphasis being on containing the Eurasian water-milfoil infestations on the Eagle River chain to keep them from spreading to other area lakes.**

**MANITOWISH WATERS:** Town Chairman John Hanson remains an active participant on the committee established by the Town Board. He was successful in his role as Chairman of the Vilas unit of WI Towns Association in advancing a resolution drafted by the Vilas unit to the association's annual convention. The resolution called for legislative action to dedicate \$5 million in additional funding to AIS programs. **As a result of John's efforts, a WI Towns Association lobbyist spoke in favor of Assembly Bill 757 at a recent public hearing.** The town committee is also preparing a grant application to support expenses associated with a large scale watercraft inspection and public awareness project to be conducted in 2006. This project is similar in scope to those in Lac du Flambeau and Three Lakes.

**CLOVERLAND:** Town Supervisor Marty Ketterer reported that Cloverland is partnering with Washington, Lincoln and the City of Eagle River to cover the local cost share portion of a plant survey and plant management plan for lakes in the lower Eagle River chain watershed including Boot Lake in Cloverland which has an unmanaged Eurasian water-milfoil infestation. **The Lakes Committee is also preparing a grant application for funding to support a watercraft inspection program during 2006 on the primary Cloverland lakes.**

**PRESQUE ISLE:** Linda Rennhack reported that getting organized at the town level has been challenging due to the large number of town lakes. However, the committee is now functioning as an extension of town government. Its first project will be to seek grant funding to conduct plant management surveys and develop plant management plans on 15 lakes during 2006. **The Town Board is considering covering the 25% local cost share of the project.**

**PLUM LAKE:** Chris Wise reported that the **Town Board recently demonstrated its support of the Town Lakes Committee by committing funds to help the group get started on public awareness efforts.** Project details are being developed.

**WINCHESTER:** Jan Scalpone thanked John Hanson of Manitowish Waters for helping the Winchester Town Board create a Town Lakes Committee. However, the Committee was established so recently that no projects have yet been identified. **Jan shared the idea that town lakes committees could become involved in more lake management issues than just invasive species.**

**LINCOLN:** There was no one in attendance to represent the town of Lincoln. Ted Ritter commended the Lincoln Town Board for partnering with Washington, Cloverland and the City of Eagle River in committing to the local cost share for conducting plant surveys and developing plant management plans for the lower Eagle River chain watershed. Ted also encouraged the Town of Lincoln to participate in the watercraft inspection program planning that is currently underway by the Town of Washington. Ted highlighted the public boat landing in Lincoln, just south of the Eurasian water-milfoil infestation on Watersmeet Lake, as an example of a landing

that should be monitored (or closed) during the times of summer and fall when the risk is greatest for spreading the existing infestation from the Eagle River Chain to un-infested water bodies. **Washington Town Chairman, Jim Spring, responded on behalf of the Lincoln Town Board confirming that the two towns are working together to confine the milfoil infestation on the Eagle River chain of lakes.**

**PHELPS:** Jerry Parker explained that the Phelps Town Board has chosen not to establish a Town Lakes Committee as part of local government, but rather to support the activities of a local association of lakes. Thus the Phelps Area Lakes Partnership (PALP) was recently created. **The Phelps Town Board has demonstrated its commitment to the AIS initiative by allocating funding to temporarily cover the local cost share portion of grant funded projects until such time that full grant reimbursement is obtained.** Grant funding will be sought to conduct plant surveys and develop plant management plans on Long and Big Sand Lakes and the thoroughfare between those lakes. Long and Big Sand are the headwaters of the Deerskin River watershed. Plant surveying and plant management planning will be accomplished for the balance of water bodies in the watershed under a separate grant already awarded.

**LAND O' LAKES:** The Land O' Lakes town board has shown resistance to creating a Town Lakes Committee according to John Annin. **Efforts are underway to create a Land O' Lakes area lakes association similar to what has been formed in Phelps,** but progress is not yet far enough along for the group to have undertaken any projects.

**ARBOR VITAE:** The Arbor Vitae Town Board has not yet formed a Town Lakes Committee according to Ted Ritter. **Ted expressed concern for the Eurasian water-milfoil infestation that was confirmed in Arrowhead Lake in Arbor Vitae this summer. Prevention and control measures need to become established in Arbor Vitae.**

**BOULDER JUNCTION:** The Boulder Junction Town Board has not yet formed a Town Lakes Committee according to Ted Ritter. **Ted expressed concern for the Eurasian water-milfoil infestation in Upper Gresham Lake. Prevention and control measures need to become established in Boulder Junction.**

**CONOVER:** Ted Ritter reported that he had been informed that some recent effort had been made in Conover to establish a Town Lakes Committee, but that **he was not aware of any progress and had not been able to find anyone in Conover to confirm any activities there.**

**EDUCATION & PUBLIC AWARENESS ACTION TEAM:** Ted Ritter explained that much has been accomplished in this area in spite of this action team not having been formed. Education of the public has become an inherent aspect of town committees and individual lake organizations. Vilas County Land and Water Conservation Department employees have attended numerous meetings of town committees, lake organizations, civic groups and others for the purpose of sharing AIS information. Other significant methods of public awareness have also been employed. The Vilas County Advertising Department has assisted by asking towns throughout the county to allocate space for AIS messages in their vacation guides. **Ted displayed a page from the Manitowish Waters guide that has ¼ of the page dedicated to informing potential area visitors of the importance of properly cleaning boats and fishing equipment before coming to Vilas County. It is believed that most other Vilas County towns will be including such messages in their 2006 booklets.** Also, the back panel of the recently printed Vilas / Oneida "Explore Wisconsin's Northwoods Lake Country" map now contains a prominent message about stopping aquatic hitchhikers. In spite of these notable accomplishments, there is still a need to address specific target groups such as fishing guides and fishing tournament organizers.

**PREVENTION & EARLY DETECTION ACTION TEAM:** This is another group that has not formally developed; however, town lakes committees and individual lake organizations are

implementing meaningful AIS prevention programs. There is now need for guidelines regarding effective lake monitoring for early detection. Ted Ritter has been assured by Laura Felda-Marquardt, Clean Boats, Clean Waters Coordinator that **a protocol is being developed for AIS lake monitoring and will be available for distribution before next spring.** Lake monitoring activities are a natural extension to watercraft inspection programs and/or plant management planning.

**INFESTATION MANAGEMENT ACTION TEAM:** Dan Anderson, team leader, reported that this committee has attempted to identify and quantify each known AIS infestation in Vilas County. Surveys have been conducted through town boards and **the information collected will be retained in a data base to be designed and implemented by the Vilas Land & Water Conservation Department** this winter. This team will actively participate in development of a Vilas County AIS strategic plan.

**RESEARCH ACTION TEAM:** Rollie Alger is coordinating the activities of the Research team. Informational files for invasive species are being assembled and will be centrally maintained in the Vilas Land & Water Conservation Department. Efforts are underway to better coordinate AIS research among the Universities of Wisconsin and Notre Dame and the WDNR. **Public presentations in Vilas County are being considered for next year to share what is being learned by researchers about individual species.** Rollie also conducted research of his own this summer and fall to determine how effectively the Deerskin River is serving as a conduit for the spread of Eurasian water-milfoil from the Phelps headwaters lakes to the lower Eagle River chain of lakes. His field study revealed near non-existence of Eurasian water-milfoil anywhere in the Deerskin River. **His findings also strongly suggest that no plant fragments survive more than a few hundred feet of the approximate 14 mile voyage from Long Lake to Scattering Rice Lake.**

**ORDINANCE DEVELOPMENT ACTION TEAM:** Carol Hendricks reported that the ordinance team has been evaluating AIS laws in states such as Maine and Minnesota and doing follow up on the effectiveness of those laws. **A draft version of proposed comprehensive ordinances for WI has been assembled by the team and is now being evaluated.** It will be distributed to appropriate contacts throughout the State by mid-winter for further evaluation.

**ECONOMIC IMPACT ACTION TEAM:** Ted Ritter introduced Gary Appel as the most recent county level volunteer team leader. Gary, who has an impressive background in economic studies and education, **has offered his talents in developing a statement on the economic impact of aquatic invasive species.** Gary presented his outline for what appears to be an incredibly complex study and then revealed an optimistic completion time of late winter or early spring, 2006! Several people in attendance expressed interest in participating in the project.

**LEGISLATIVE ACTIVITY:** Ted Ritter commented briefly on Assembly Bill 757 introduced in part by 34<sup>th</sup> District Assemblyman Dan Meyer of Eagle River. The bill as drafted is not perfect, but its authors have agreed to amendments before the bill leaves the House Natural Resources Committee on its potentially perilous journey to the Governor's desk. **A public hearing recently held in Madison prompted State organizations such as the Towns Association, the Counties Association, the Land & Water Conservation Association and the River Alliance to speak in support of dedicating \$5 million dollars annually to AIS control programs. A representative of the Lac du Flambeau Band of Lake Superior Chippewa spoke in favor of using Indian gaming revenues as the funding source.** A sample town resolution of support for the bill, which had been prepared by John Hanson of Manitowish Waters, was shared with attendees. Town Lakes Committees were urged to request similar resolutions of support from their respective town boards.


**AIS STRATEGIC PLANNING:** Time did not allow for discussion of the pending Vilas County AIS strategic plan at this meeting, but in his opening remarks that morning, Ted Ritter had urged all attendees to **consider what the long term objectives of Partnership should be** as they

listened to speakers highlight the accomplishments of the past year. A meeting will be scheduled for some time in January, 2006 for the sole purpose of developing a long term strategic plan outline.

**CONCLUDING REMARKS:** Ted Ritter expressed admiration for the strong public support to year one of the AIS Partnership. **Thanks are in order to the supportive town boards and the countless individuals who have become part of the steadily growing army of volunteers now involved in the grass roots initiative to stop the spread of AIS.** The awareness level in and around Vilas County has soared during the past year. However, Ted expressed concern for potential loss of enthusiasm if substantial funding fails to develop for control of existing infestations that will surely spread if allowed to thrive. **We must all find ways of supporting legislative action to generate the desperately needed monetary aid.** More meetings of the general Partnership will be scheduled when appropriate as this project continues to evolve.

Special thanks are in order to County Conservationist and Chef Extraordinaire, Patrick Goggin, for his low budget gourmet food offerings and to County Lakes Specialist, Carolyn Scholl, for assisting Patrick with kitchen duties and for taking pictures throughout the day.

In addition to the three progress updates included in this report, the Land and Water Conservation Committee (LWCC) was provided with monthly details of the Project Coordinator's activities at its regular meetings. A sample report follows. All reports are included in the compact disc accompanying this report. Time was also allocated at each meeting for a review of project activities and for feedback, direction and suggestions from the supervisors.



Monthly Report  
Submitted by: Ted Ritter  
A.I.S. Project Coordinator  
May 31 – June 27, 2006

- Meetings attended this reporting period:
  - Governor's Council on Invasive Species
  - Phelps Area Lakes Partnership June mtg.
  - Lac du Flambeau Town Lakes Committee June mtg.
  - Plum Lake Town Lakes Committee June mtg.
  - North & South Twin Lakes Association annual mtg.
  - Little Saint Germain Lake P&R District special mtg.
- AIS presentations this reporting period:
  - Clean Boats, Clean Waters training session – June 6
  - Trees For Tomorrow summer education series – June 13
  - Public training for AIS lake monitoring – June 15
  - Forest County Lakes & Rivers Association – June 17
  - Polk County Lakes & Rivers Association – June 21
  - Clean Boats, Clean Waters training session – June 22
  - Oneida Lakes & Rivers Association – June 24
- Other activities this reporting period:
  - Lakeland Times interviews for upcoming AIS edition
  - AIS Partnership "Invader Crusader" award picnic
  - Rusty Crayfish removal project consideration with University of Wisconsin, Trout Lake Station and University of Notre Dame
- Upcoming activities:
  - 06/30 NW Wisconsin Lakes Conference – Cable, WI
  - 07/01 Spectacle Lake P & R District annual meeting
  - 07/05 Natural Lakes AIS campfire discussion
  - 07/06 Crystal Lake Nature Center AIS presentation
  - 07/09 Pickerel Lake Association (Oneida Co.) annual meeting
  - 07/11 Public training for AIS lake monitoring
  - 07/13 Phelps Area Lakes Partnership July meeting
  - 07/15 Big Sand Lake Association annual meeting
  - 07/19 Lac du Flambeau Town Lakes Committee meeting
  - 07/20a.m. Clean Boats, Clean Waters training - Minocqua
  - 07/20p.m. Evening with AIS researchers – LUHS
  - 07/21 Northwoods Lakes Workshop
  - 07/25 AIS Information Exchange Workshop – Park Falls
  - Other town and lake association meetings not yet scheduled
- Upcoming out of county travel:
  - 06/30 NW Wisconsin Lakes Conference, Cable, WI (*no travel expense to Vilas Co.*)
  - 07/20a.m. Clean Boats, Clean Waters training - Minocqua
  - 07/20p.m. Evening with AIS researchers – Minocqua
  - 07/21 Northwoods Lakes Workshop – Minocqua
  - 07/25 AIS Information Exchange Workshop – Park Falls



Many Vilas County towns promote community business through their local chambers of commerce and most chambers produce an annual “Visitors Guide”. Hundreds of thousands of these guides are distributed annually at trade shows and through mailings from the chambers to prospective out of area visitors. Local businesses advertise in the guides, the revenue from which pays for production and distribution of the guides. Page space is therefore competitive and expensive. Chambers of commerce throughout Vilas County followed the lead of the Vilas County Advertising Department in 2005 (the department also generates a county visitors guide) by donating advertising space to an AIS prevention message. This was a very significant demonstration from the local business community that they have a role to play in reminding prospective visitors of the importance of cleaning their boats, trailers and related equipment before traveling to Vilas County. Samples of those messages follow:

**ARE YOU BOATING IN LAND O' LAKES?**

Your boat might be carrying non-native invasive species such as Zebra Mussels, Rusty Crayfish, or Eurasian Milfoil.

Take responsibility for protecting these beautiful waters we all enjoy. Clean and disinfect your boat, trailer and fishing gear before you leave home!

**CLEAN BOATS = CLEAN WATERS**

REMOVE debris from your boat & trailer  
 FLUSH your motor's cooling system  
 DISINFECT ropes, anchor and interior  
 WASH & RINSE fishing tackle and bait buckets

Photo: Michigan Sea Grant Archives — www.seagrant.umich.edu

Diagram labels: hitch, live well, transom well, rollers, axle, lower unit - propeller

**ARE YOU BRINGING A BOAT TO THE MANITOWISH WATERS AREA?**

Your boat may have been exposed to non-native invasive life forms that are not welcome in Vilas County. Animals such as Zebra Mussels or Rusty Crayfish and plants such as Eurasian Water-milfoil can easily be transported unintentionally from a contaminated lake to one that is not. Be a responsible boater. Properly clean and disinfect your boat, trailer and fishing equipment before leaving home.

HELP KEEP OUR AREA FREE OF AQUATIC NON-NATIVE INVASIVE LIFE FORMS. OUR PRISTINE LAKES ARE A HERITAGE WORTH PRESERVING!

**CLEAN BOATS = CLEAN WATERS**  
 PLEASE CLEAN YOUR BOAT, TRAILER AND FISHING GEAR BEFORE COMING TO VILAS COUNTY!

Diagram labels: hitch, live well, transom well, rollers, axle, lower unit/propeller

**ARE YOU BRINGING A BOAT TO THE LAC DU FLAMBEAU AREA?**

Your boat may have been exposed to non-native invasive life forms that are not welcome in Vilas County. Animals such as Zebra Mussels or Rusty Crayfish and plants such as Eurasian Water-milfoil can easily be transported unintentionally from a contaminated lake to one that is not. Be a responsible boater. Properly clean and disinfect your boat, trailer and fishing equipment before leaving home.

HELP KEEP OUR AREA FREE OF AQUATIC NON-NATIVE INVASIVE LIFE FORMS. OUR PRISTINE LAKES ARE A HERITAGE WORTH PRESERVING!

**CLEAN BOATS = CLEAN WATERS**  
 PLEASE CLEAN YOUR BOAT, TRAILER AND FISHING GEAR BEFORE COMING TO VILAS COUNTY!

Diagram labels: hitch, live well, transom well, rollers, axle, lower unit/propeller

**Are You Bringing A Boat to Vilas County?**

Your boat may have been exposed to non-native invasive life forms that are not welcome in Vilas County. Animals such as Zebra Mussels or Spiny Water Fleas and plants such as Eurasian Water-Milfoil can easily be transported unintentionally from a contaminated lake to one that is not. Be a responsible boater. Properly clean and disinfect your boat, trailer and fishing equipment before leaving home and before moving from lake to lake.

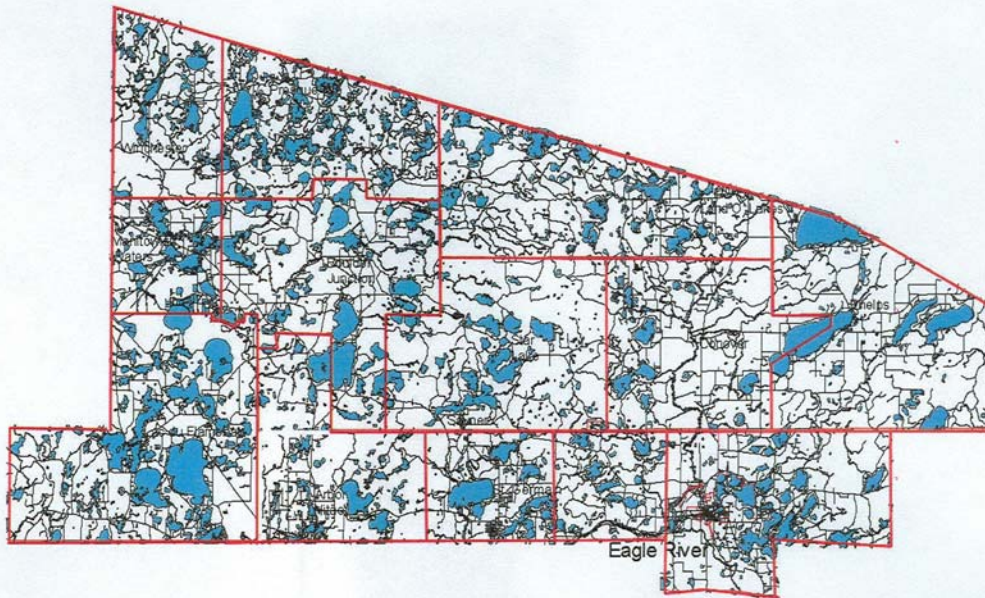
Help Keep Vilas County Free of Aquatic Non-native Invasive Life Forms

**CLEAN BOATS = CLEAN WATERS**



**Mid-point project accomplishments:** Completion and approval of the Partnership Strategic Plan, a primary goal of the project, was completed in July, 2006. Following several meetings of partners with the Project Coordinator, a plan was crafted and presented to the Vilas County Land and Water Conservation Committee (LWCC) for consideration. Adjustments were made following LWCC input and the final plan was approved by the committee on July 26. The complete plan is included on the compact disc accompanying this report.

**VILAS COUNTY, WI  
LAND & WATER CONSERVATION DEPARTMENT  
AQUATIC INVASIVE SPECIES  
PARTNERSHIP PLAN  
WNDR Grant ALPT-001-05**



**PREPARED BY  
VILAS COUNTY AQUATIC INVASIVE  
SPECIES PARTNERSHIP  
Ted Ritter, AIS Project Coordinator**

Approved by Vilas County Land & Water  
Conservation Committee, July 26, 2006

The primary expansion of volunteer efforts as the project entered year #2 was in the direction of lake monitoring for early detection of invasive species. Prevention and public awareness efforts at public landings via participation in the “Clean Boats, Clean Waters” initiative were well under way in many areas of the county, yet inadequate attention was being given to lake monitoring. Public workshops were scheduled during the summer of 2006 to introduce lake monitoring volunteers to the tools and methodology for effectively monitoring lakes.

In the meantime, some of the action teams created during year #1 were still functioning. The “Infestation Management” team was winding down its efforts to identify and quantify all known AIS infestations throughout the county. The “Research” team had scheduled public informational forums for presentations by people involved with managing or researching the management of several AIS forms known to be in or near Vilas County. The “Economic Impact” group was still hoping to get a handle on its objectives.

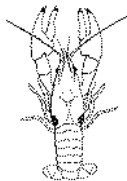
An 18 month project progress report was prepared to highlight the primary accomplishments of the project. The report follows:



**VILAS COUNTY LAND & WATER  
CONSERVATION DEPARTMENT**

**AQUATIC INVASIVE SPECIES (AIS)  
PLANNING PARTNERSHIP**

330 Court Street  
Eagle River, WI 54521  
(715) 479-3738



**MID-TERM UPDATE**

May 12, 2006

The Vilas County AIS Partnership is at the mid-point of its three year grant funded term. This seems an appropriate time to highlight where the project is at and where we hope to go during the second half of the project.

- **THE STATUS OF INFESTATIONS IN VILAS COUNTY** remains about the same as when the project started, to the best of our knowledge. Eurasian water-milfoil (EWM) is well established in the lower lakes of the Eagle River chain and the Phelps lakes of Big Sand, Long and North & South Twin. Infestations of lesser extent can be found in Upper Gresham Lake in Boulder Junction, Arrowhead Lake in Arbor Vitae, Silver Lake in the City of Eagle River, Boot Lake in Cloverland and Little Saint Germain Lake in Saint Germain. Only Little Saint Germain Lake has a long range management plan in place to cope with the infestation. The cost is substantial, but the EWM is under control to the extent possible. Forest Lake, in the town of Land O' Lakes, remains on the list of EWM infested waters, however no EWM plants have been found for the past several years following what seems to have been an unusually successful herbicide application.

All Vilas County advanced stage EWM infestations will likely have plant management plans ready to implement by the spring of 2007, thanks to the actions of concerned lake associations, supportive municipal governments and the WDNR, all of whom are assisting in completing whole lake plant surveys and aquatic plant management plans. Funding for the control measures remains illusive, but management plans will be ready to implement.

While Rusty Crayfish still prowl approximately 60 area lakes, it is hoped that the developing relationship with the University of Notre Dame Environmental Research Center in northern Vilas County will some day provide a solution for managing these destructive critters. In the meantime, Zebra mussels remain as nearby as Lake Metonga in Crandon and Spiny water fleas as close as the Gile Flowage in Iron County between Mercer and Hurley. Neither has yet been found in Vilas County waters, but both species pose substantial risks.

- **PREVENTION EFFORTS REMAIN A HIGH PRIORITY** with over 90% of Vilas County lakes still free of invasive species. Most Vilas County towns now have some version of a Town Lakes Committee. Five such committees (Manitowish Waters, Lac du Flambeau, Saint Germain, Cloverland and Washington) were successful in obtaining a total of \$60,000 in WDNR grant awards to implement large scale public awareness and prevention/early detection programs this summer.

Watercraft inspection programs will be common this summer throughout the county. The Clean Boats, Clean Waters initiative is widely recognized as an effective means of both increasing public awareness and stopping the spread of hitchhiking invasive species. The volunteer based program will be in place at perhaps half of the public landings this summer with varying degrees of intensity.

Lake monitoring for early detection of infestations is about to take a step forward thanks to the efforts of Laura Herman and Laura Felda-Marquardt of the UWEX Lakes Partnership. They have produced user friendly guidelines highlighting why, when, where and how to monitor for invasive species and what to do if a suspicious plant or critter is found.

Public training sessions in Vilas County are now being planned and will soon be announced.

The Three Lakes Property Owners Association and the Three Lakes Town Board, our near neighbors in Oneida County, have been awarded a second consecutive WDNR grant for watercraft inspection and lake monitoring activities on the upper Eagle River Chain of Lakes. No EWM infestations have yet been confirmed in those lakes in spite of daily boat traffic to and from the downstream lower chain of lakes. This Vilas County Partnership enjoys a close and mutually beneficial working relationship with the Three Lakes program.

- **PARTNERSHIP ACTION TEAMS** have contributed significantly to the Vilas County AIS Partnership:
  - The **Infestation Management Team** has surveyed Vilas County towns and cataloged all know AIS infestations. A data base will be built in the coming months that will provide detailed information about the infestations including the ongoing status of each.
  - The **Research Team** has been reaching out to university, state and federal research programs to learn more about the characteristics of various invasive species. Public forums are being planned to share the findings of research efforts. The first of these will be Thursday evening, July 20 at Lakeland Union

High School in Minocqua in advance of the Friday Northern Lakes Conference. Details of these events will be broadcast in the near future.

- The **Ordinance Team** has reviewed AIS laws in other States and has drafted a comprehensive law that it hopes will be considered for adoption by the Wisconsin Legislature. The draft is very preliminary at this point. It will be evaluated by the Vilas County Land & Water Conservation Committee before any effort is undertaken to build a state wide coalition of support to move the proposal forward.
  - The **Planning Team** has drafted a long range road map to sustain the Vilas County AIS Partnership beyond the initial three year project. It, too, will be evaluated by the Land & Water Conservation Committee before being distributed to lake associations, town boards and the county board for support and implementation.
  - The **Economic Impact Team**, the smallest of the volunteer action efforts, is finishing a study and preparing a detailed comprehensive report on the actual and potential economic impact of exotic invasive life forms in Vilas County water bodies.
- **CONGRATULATIONS ARE IN ORDER TO THE VILAS COUNTY LAKES ASSOCIATION (VCLA) AND THE VILAS COUNTY AIS PARTNERSHIP** for being named co-recipients of the 2006 "Invader Crusader" award sponsored by the Wisconsin Governor's Council on Invasive Species. The award highlights the cooperative grassroots efforts of the two organizations in stopping the spread of AIS in Vilas County and throughout Wisconsin. VCLA played a significant role in obtaining the funding enabling creation of the Vilas County Partnership and VCLA members and directors have been active participants in the Partnership. The list of names of all the people and organizations now involved in this effort is lengthy. This award is assurance that everyone's participation is noted and valued. Good job everybody!
- **WHAT'S NEXT?** In spite of our collective accomplishments during the first half of the three year project, our work has just begun. We cannot consider the project truly successful until we have:
- Instilled in all lake users a heightened sense of lake stewardship responsibility. We need to outgrow the need for boat landing watercraft inspections by achieving a level of public understanding that prompts people to routinely be aware of which invasive species exist in which water bodies and to automatically employ techniques to prevent hitchhikers from snagging rides from one water body to another.
  - Convinced all lake users to be vigilant in monitoring for new infestations and to know what to do when suspicious life forms are detected.
  - Convinced our Legislature to adopt meaningful laws to stop the spread of invasive species and to dedicate sufficient funds to manage infestations as effectively and efficiently as possible.
  - Prompted more research to achieve a better understanding of invasive species and how to prevent and manage them, and have improved communications between researchers, regulatory agencies, local units of government, lake organizations and individuals so that we are all functioning from a common knowledge level reflecting the latest research findings.
  - Caused local governments to be more actively involved in lake management issues. The 1,260 towns in Wisconsin contain more than 95% of the State's inland lakes. Shoreline property values in those towns are estimated to be in excess of \$50,000,000,000 (50 billion)! Yet, 70% of the State's population resides in villages and cities. If town governments don't take an active roll in managing lakes and protecting their tax bases, who will?

Yes, there is still much to do. But, I have no doubt that the momentum we have achieved during the first 18 months of our efforts will be sustained and expanded and will carry us forward to achieve these objectives and more.

I extend my personal thanks to the Vilas County Board, the Land & Water Conservation Committee, the Land & Water Conservation Department where I am temporarily employed and benefit from the daily support of Patrick Goggin and Carolyn Scholl, the Town Lakes Committees and the Town Boards that have supported their efforts, lake organizations, the directors and members of VCLA with whom this partnership shares Governor Doyle's 2006 Invader Crusader award, local and Madison WDNR staff, the Stevens Point based Lakes Partnership - UWEX team, area chambers of commerce, local businesses, local media, contractors and others. The growing army of volunteers who show up at meetings and/or donate their time to monitor lakes and inspect boats at public landings is *fantastic*. This has been an exhilarating 18 months for me and I am proud to be affiliated with all of you. You have become a challenge for me to keep up with! I look forward to more of the same during the second half of our project.

Ted Ritter  
Vilas County Aquatic Invasive Species  
Project Coordinator

**Project accomplishments at three year conclusion:** The most notable achievements of the second 18 months was having plant management plans and implementation funding approved by the DNR for 13 county lakes with Eurasian watermilfoil. Only one of 17 EWM infested lakes at the initiation of the project had approved plans supported by State funding. At the conclusion of the project the statistic had risen to 14 of 20 lakes. Plan implementation on the 13 additional lakes will commence in the spring of 2008.

Town lakes committees were at various stages of proficiency during the second half of the project with some being extremely effective while a few were still struggling to achieve a sense of accomplishment. The overall success of the town committees is reflected in the Vilas County grants awarded during 2006 and 2007. Nearly all of the grant funded projects were sponsored by town boards rather than individual lake organizations. A summary of grant awards follows:



**WDNR GRANT AWARDS IN VILAS COUNTY DURING  
THREE YEAR AIS PARTNERSHIP PROJECT**

<b>FALL 2005 LAKE PLANNING GRANTS</b>			
LPL-1077-06	Town of Washington	Catfish Lake Aquatic Plant Survey and APM Plan	\$3,681
LPL-1078-06	Town of Washington	Cranberry Lake Aquatic Plant Survey and APM Plan	\$3,681
LPL-1079-06	Town of Washington	Voyageur Lake Aquatic Plant Survey and APM Plan	\$3,681
LPL-1080-06	Town of Washington	Eagle Lake Aquatic Plant Survey and APM Plan	\$3,681
LPL-1081-06	Town of Washington	Scattering Rice Lake Aquatic Plant Survey and APM Plan	\$3,681
LPL-1082-06	Town of Washington	Otter Lake Aquatic Plant Survey and APM Plan	\$3,681
LPL-1083-06	Town of Washington	Lynx Lake Aquatic Plant Survey and APM Plan	\$3,681
LPL-1084-06	Town of Washington	Duck Lake Aquatic Plant Survey and APM Plan	\$3,681
LPL-1085-06	Town of Washington	Watersmeet Lake Aquatic Plant Survey and APM Plan	\$3,681
			<b>\$33,129</b>
<b>FALL 2006 LAKE PLANNING GRANTS</b>			
LPL-1131-07	Town of Presque Isle	Big Lake Limnological Baseline Study & APM plan	\$5,929
LPL-1132-07	Town of Washington	Butternut and Franklin Lakes Limnological Baseline Study & APM plan	\$7,976
LPL-1135-07	Town of Presque Isle	Crab Lake Limnological Baseline Study & APM plan	\$6,043
LPL-1136-07	Town of Presque Isle	Oxbow Lake Limnological Baseline Study & APM plan	\$6,128
LPL-1137-07	Town of Washington	Anvil, Boot and Deerskin Lakes Limnological Baseline Study & APM plan	\$8,413
LPL-1138-07	Town of Washington	Kentuck, Silver and Tambling Lakes Limnological Baseline Study & APM plan	\$9,477
LPL-1139-07	Town of Washington	Upper and Lower Ninemile Lake Limnological Baseline Study & APM plan	\$9,288
LPL-1144-07	Town of Presque Isle	Wildcat and Averill Lake Limnological Baseline Study & APM plan	\$6,596
LPL-1145-07	Town of Presque Isle	Presque Isle and Little Horsehead Lake Limnological Baseline Study & APM plan	\$8,936
			<b>\$68,786</b>
<b>SPRING 2006 AIS EDUCATION &amp; TRAINING</b>			
AEPP-034-06	Town of Man. Waters	Manitowish Waters AIS Education, Prevention & Planning Project	\$25,936
AEPP-037-06	Town of Lac du Flambeau	AIS Boat Inspection, Education, & Lake Monitoring Project	\$14,153
AEPP-041-06	Town of St. Germain	2006 Watercraft Inspection/AIS Public Awareness/AIS Lake Monitoring	\$15,195
AEPP-043-06	Town of Washington	Clean Boats/Clean Waters Training	\$1,150
AEPP-048-06	Town of Cloverland	Cloverland Boat Landing Inspections for AIS	\$4,987
AEPP-057-07	Long Lake Association	Long and Big Sand APM Plans	\$3,950
			<b>\$65,371</b>
<b>SPRING 2007 LAKE PLANNING GRANTS</b>			
LPL-1156-07	Town of Boulder Junction	Gresham Lakes Mgmt Planning Project - Phase 1 Stakeholder Participation	\$5,766
LPL-1157-07	Town of Boulder Junction	Gresham Lakes Mgmt Planning Project - Phase 2 Upper Gresham Lake	\$9,663
LPL-1158-07	Town of Boulder Junction	Gresham Lakes Mgmt Planning Project - Phase 3 Middle Gresham Lake	\$7,635
LPL-1159-07	Town of Boulder Junction	Gresham Lakes Mgmt Planning Project - Phase 4 Lower Gresham Lake	\$9,920
			<b>\$32,984</b>
<b>SPRING 2007 AIS EDUCATION &amp; TRAINING</b>			
AEPP-077-07	Town of St. Germain	AIS Awareness, Prevention and Early Detection	\$8,775
AEPP-078-07	Town of Man. Waters	AIS Education, Planning and Prevention Project	\$16,816
AEPP-081-07	Town of Winchester	AIS Community Awareness	\$3,800
AEPP-083-07	Town of Lac du Flambeau	AIS Watercraft Inspection, Education and Lake Monitoring Project	\$20,393
AEPP-088-07	Town of Washington	Eagle Lake AIS	\$3,976
			<b>\$53,760</b>
<b>FALL 2007 AIS INFESTATION MANAGEMENT</b>			
ACEI-028-08	Lower Eagle River Chain	Eagle River Chain of Lakes AIS Project	\$75,000
ACEI-029-08	Town of Phelps	North and South Twin Lakes AIS Control and Prevention Project	\$70,248
ACEI-031-08	Long Lake District	Long Lake AIS 5 Year Control Plan	\$70,900
			<b>\$216,148</b>
		<b>TOTAL PARTNERSHIP GRANTS</b>	<b>\$470,178</b>



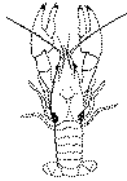
A broad review of the project accomplishments was presented to the public by the project coordinator in late October, 2007. An outline of the presentation follows:



**VILAS COUNTY LAND & WATER  
CONSERVATION DEPARTMENT**

**AQUATIC INVASIVE SPECIES (AIS)  
PLANNING PARTNERSHIP**

330 Court Street  
Eagle River, WI 54521  
(715) 479-3738



**ACCOMPLISHMENTS OF THE VILAS COUNTY AIS PARTNERSHIP  
AT CONCLUSION OF THREE YEAR GRANT FUNDED PROJECT**

1. WDNR grant awards (many written and administered with direct assistance of AIS Coordinator)
  - o Lake Planning grants: \$134,899
  - o AIS Education & Awareness grants \$119,131
  - o AIS Infestation Management grants \$216,148
  - \$470,178
  
2. Town boards engaged in AIS prevention/management support:
  - o At start of project 1 of 14
  - o At conclusion of three year project 12 of 14
  
3. Eurasian watermilfoil infested Vilas County lakes with WDNR approved plant management plans supported by State funding:
  - o At start of project 1 of 17
  - o At conclusion of three year project 14 of 20
  
4. Volunteer hours: 6,400 needed to qualify for State reimbursement of project expenses
  - o 10,500+ accounted for to date
  - o 14,400+ accounted for in support of additional grant funded projects throughout the county
  - o 25,000+ total hours by many hundreds of volunteers
  
5. Functioning Vilas County AIS Partnership website  
([www.vilaslandandwater.org](http://www.vilaslandandwater.org))

6. [Vilas County AIS Partnership Long Range Plan](#) in place (see above website)
7. Co-recipient of 2006 “Invader Crusader” award of the [WI Governor’s Council on Invasive Species](#)

Summary:

- Public awareness is high.
- Prevention efforts are high.
- Infestation management programs are being initiated with State funding assistance.
- Vilas County is widely recognized for its leadership in AIS initiatives.
- Objectives of the three year project have been met and exceeded.

Specific services provided by Coordinator:

- Served as a catalyst for local (and to some degree state-wide) momentum building
- Traveled 8,208 in-county miles attending and/or presenting at 149 meetings of town lakes committees, lake organizations, civic groups, etc. Approximately half of these meetings occurred during evening hours, on weekends or on holidays.
- Assisted in the development of town lakes committees, some of which need continuing support in achieving self sustainability.
- Provided coordination of Partnership activities with WDNR regional and state offices.

**Project overall summary:** The challenge of soliciting and coordinating county wide volunteers to become engaged in AIS public awareness, education, prevention and management activities seemed daunting at the beginning of the project. The Vilas County Board of Supervisors had agreed to front over \$158,000 in expenses with the understanding that the project would be successful enough to earn reimbursement of those costs, thus resulting in no financial burden to county taxpayers. The project coordinator was ultimately responsible for achieving that singular definition of project success.

Lake rich, but sparsely populated counties in northern WI are perhaps unique from other areas of the state. Approximately 70% of Vilas County’s tax base is waterfront property. Only 40% of waterfront property owners are full time local residents. Therefore, the majority of the potential volunteer base for this project is away from the area for much of each year. Virtually all lake organization annual meetings occur during the summer months and usually within a few days of the major holidays of Memorial Day, Independence Day and Labor Day. Most of the project activities needed to be planned in accordance with availability of volunteers.

The decision to pursue the creation of town lakes committees and to use them as building blocks for the Partnership proved wise. Town boards meet monthly year round. The handful of lake organization officers available during winter

months was sufficient in many towns to enable the committee structures to be established with options for growth when the “snowbirds” returned in the spring.

Regionalizing the project around towns also resulted in manageable sized groups of people with common lake interests or concerns. For instance, Eurasian watermilfoil infestations are more concentrated in the eastern portions of Vilas County. Town lakes committees in those areas are more concerned with infestation management. Prevention activities were understandably more appealing to town committees in areas where infestations had not yet developed.

It is inaccurate to imply that the concept of town lakes committees was eagerly embraced by all town boards when first suggested to them. Some acted quickly and positively while others came on board more gradually and sometimes with uncertainty. Even at the end of the three year project there are two towns that have not yet become engaged in supporting the Partnership. Twelve of the 14 town boards are active to varying degrees, but most are fully supportive of the town lakes committee concept, even to the extent of providing substantial financial assistance.

The successes of town lakes committees in obtaining Lake Planning and AIS Control grants was heralded with each grant cycle. Local media (newspapers, radio and television) eagerly assisted in making the public aware of the accomplishments of town committees. The atmosphere created by positive reporting helped fuel volunteerism and growth of the Partnership. Public meetings were conducted at the end of each year during which Partnership accomplishments were highlighted and strategies for future activities were considered. The meetings were well attended and the media was always present.

It is unfortunately more difficult to document radio and television involvement than it is to build an electronic inventory of newspaper support. The compact disc accompanying this report includes over 200 scanned copies of printed articles, meeting notices, editorial comments and more as evidence of commitment by the Vilas County News Review, the Lakeland Times and even F Y I Northwoods, a small weekly paper circulated in the northern region of Vilas County, to supporting the Partnership. The following two achievements summarize the significance of newspaper contributions:

1. The Lakeland Times produced a special summer, 2006, 12 page edition entitled **“A LOOK AT INVASIVE SPECIES – It’s up to you to preserve our lakes”**. The edition was free of advertising and was produced entirely at the expense of the Lakeland Times as a public service.
2. The Vilas County News Review was awarded first place among all weekly newspapers in Wisconsin in the “environmental reporting” category of the 2006 “Better Newspaper” contest of the Wisconsin Newspaper Association. The sole subject of the multiple-story contest entry was coverage of the Vilas County AIS Partnership initiative.

The collective value of media support to the Partnership cannot be overstated, but without strong positive public response to the project in its infancy and throughout the three years, there would have been nothing for the media to follow. Waterfront property owners in Vilas County, whether full or part time residents, demonstrated a passion to protecting area lakes and property values from the perceived ravages of AIS. It is these volunteers who are especially deserving of recognition for whatever successes the Partnership achieved.

Attendance at public meetings was strong from the beginning. People were eager to learn more about invasive species and to join their neighbors in the growing Partnership. In addition to individual property owners acting without affiliation to any organization, people came forth representing lake organizations, town boards, the Lac du Flambeau Indian tribe, local businesses and chambers of commerce, civic organizations, professional lake management firms, and various State and Federal agencies.

Town Lakes Committees proved an effective venue for organizing public awareness and prevention campaigns. Many creative ideas emerged from these groups including:

- Hundreds of thousands of Grocery bags with a printed AIS prevention message and the Clean Boats, Clean Waters logo
- Thousands of educational paper placemats distributed to area restaurants
- AIS message labels applied to tens of thousands of disposable bait containers
- Book marks with AIS messages distributed through local libraries
- Placement of AIS signage at private boat landings
- AIS education displays at local events including craft fairs, flea markets, fire department town picnics and other gatherings of large numbers of people
- “Shoreline Sweeps” designed to engage the public in identifying plant and animal species in area lakes
- Providing the “Lady Yakkers”, a group of women who met weekly during the summers to kayak on area waters, with training that enabled them to look for and report potential findings of invasive species
- New kiosks to more effectively display boat landing signage with eye catching AIS prevention messages being the focal point
- AIS awareness presentations by town lakes committee members to local lake organizations
- Public forums providing attendees an opportunity for “hands on” learning about invasive species of local concern

Some of these town committee campaigns were supported by AIS awareness and prevention grants with offsetting in-kind contributions for out of pocket expenses coming primarily from volunteer CBCW watercraft inspection activities and in lake monitoring for early detection of new infestations. Payment of project expenses was typically fronted by sponsoring town boards in advance of successful completion of the projects and WDNR reimbursements. The temporary financial support of the town boards was critical to the functioning of the projects.

Considerable interest in the Vilas County Partnership was shown from outside the county. The Project Coordinator was requested on several occasions to either travel outside Vilas County to present information to various groups or be interviewed by outside county organizations. The following table summarizes those events:

DATE	EVENT	LOCATION
10/11/05	Milwaukee Public Radio Interview	Milwaukee
10/15/05	Bayfield Co. Lakes Assoc.	Iron River
10/19/05	GLIFWC Upper Great Lakes regional conf.	Lac du Flambeau
10/26/05	Institute for Learning in Retirement	Rhineland
04/21/06	WAL Annual Conference	Green Bay
04/22/06	WAL Annual Conference	Green Bay
05/25/06	Florence County LWCC/Lakes Association mtg.	Florence
06/10/06	Discover WI – Maintaining WI Resources, AIS	Midwest U.S.
06/17/06	Forest Co. Lakes & Streams Association	Crandon
06/21/06	Polk Co. Lakes & Rivers Association mtg.	Balsam Lake
06/24/06	Oneida Co. Lakes & Rivers Association	Lake Tomahawk
06/30/06	NW WI Lakes Conference	Cable
10/10/06	Western UP CWMA annual mtg.	Watersmeet, MI
11/09/06	N.E. WI AIS grant workshop	Green Bay
05/23/07	4 Co. LWCC mtg.	Three Lakes
09/08/07	MI Lakes & Streams Assoc. annual mtg.	Iron River, MI
10/09/07	Western UP CWMA annual mtg.	Watersmeet, MI

Overall, the project was successful from the perspective of accomplishing its objectives, yet in the view of the Project Coordinator, it fell short of achieving the ultimate target of eliminating new introductions of invasive species in Vilas County lakes. Reasons for this are beyond the control of the local partnership. Personal commentary by the Project Coordinator on how the State's overall AIS program might be improved is offered as an appendix at the end of this report.

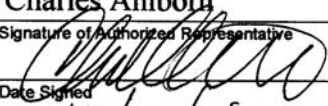
**Project budget vs. actual expenses:**

	State	State	County	County	Total	Total
	Projected	Actual	Projected	Actual	Projected	Actual
<b>Project Totals:</b>						
State Grant Funding	\$158,588	\$166,402				
Vilas County In-kind Funding			*\$158,588	*\$179,056		
Total Project Funding					\$317,176	\$ 345,458
	State	State	County	County		
	Projected	Actual	Projected	Actual		
<b>Project Expenses Detail:</b>						
Coordinator (Salary + Benefits) (FT, 3 yrs, \$14.75/hr + increases)	\$147,537	\$154,361				
Coordinator Training (conference travel & fees, 3 yrs)	\$ 2,316	\$1,011				
Coordinator Travel (@ federal .375/mi, 3 yrs)	\$ 3,100	\$ 4,268				
Educational Materials						
Literature/Brochures	\$ 300	\$ 0				
AIS Workshop Packets	\$ 400	\$ 0				
Miscellaneous Materials (plan production – 50 copies, mtg supplies, volunteer supplies)	\$ 3,560	\$ 1,718				
Miscellaneous Materials (other)	\$ 0	\$ 4,841				
Mailings – Reports & Information (paper, envelopes, postage)	\$ 1,375	\$ 203				
<b>Project In-kind Detail:</b>						
County Staff Time (Sal + Benefits): (CC & LS Ave \$27/hr, 3350 hrs; 3 yrs)			*\$ 90,450	*\$ 65,335		
Partnership Volunteers (200hr/person/3yr; \$8/hr, 32 persons) (\$1,600/person/3 yrs)			*\$ 51,200	*\$ 87,603		
LWCD Staff In-County Travel (70 trips, 70 mi @ fed .375/mi, 3 yrs)			*\$1,838	*\$2,285		
Volunteer Travel (20 trips, 60 mi @ fed .375/mi, 32 persons, 3 yrs)			*\$ 14,400	*\$ 16,431		
Educational Materials			*\$ 700	*\$ 0		

\*Actual in-kind contributions exceed projections by \$20,468 although county staff contributions of time fell short by \$25,115. This is because public participation was stronger than anticipated which allowed county staff to dedicate less time to the project.



**DNR Final Grant Payment Request:** (data supporting the figures contained herein are provided on detailed spreadsheets on the enclosed compact disc):

State of Wisconsin Department of Natural Resources Box 7921 Madison, WI 53707-7921	<div style="border: 1px solid black; padding: 2px; display: inline-block;">Reset</div>	<b>Grant Payment Request</b> Form 8700-001 (R 8/03) Page 1 of 2
<p><small>Notice: Project Sponsors are required to provide information requested on this form when applying for payment of a grant funded by the Department. See Reporting Requirements on reverse. The Department will not process your payment request unless you provide all information requested. This information will be used to determine the amount of your payment and issue your check. Personally identifiable information collected will be used for program administration and may be made available to requesters as required under Wisconsin's Open Records law [ss. 19.31-19.39, Wis. Stats.].</small></p> <p><small>Submit one copy of this request form, your completed Grant Payment Worksheet (Form 8700-002), and required documentation, listed on reverse, to your DNR Grant Specialist. See the DNR web site for additional information: <a href="http://www.dnr.state.wi.us/org/caer/cfa">http://www.dnr.state.wi.us/org/caer/cfa</a></small></p>		
<b>Project Sponsor Information</b>		
Project Sponsor / Management Unit Name <b>Vilas County Land &amp; Water Conservation Committee</b>		Grant Number <b>ALPT-001-05</b>
Project Name <b>Vilas County Aquatic Invasive Species Strategic Planning</b>		County <b>Vilas</b>
The DNR will mail the check to the name identified on the application as "Check Recipient." Questions? Contact DNR Grant Specialist.		Type of Request: <input type="checkbox"/> Partial <input checked="" type="checkbox"/> Final <input type="checkbox"/> Supplemental (Snowmobile Only)
<b>Payment Information (see reverse for instructions)</b>		
<b>A. Payment Record to Date</b>		
	Amount	This Column for DNR Use Only
1. Amount of Grant (from original or amended Grant Agreement)	158,588.00	
2.a. Advance Payment Received, if any	0.00	
2.b. Total Payments Received after Advance Payment, if any	42,976.15	
2.c. Total Payments Received to Date (Lines 2.a. + 2.b.)	42,976.15	
3. Funds Remaining (Line 1 minus Line 2.c.)	115,611.85	
<b>B. Cost Share Amount</b>		
4. Total Eligible Project Costs this Period. Transfer data from "Total Project Costs" field on Worksheet (Form 8700-002)	\$ 115,611.85	
5. Your Share of Costs. See Line 5 instructions on reverse.	\$ 0.00	
6. State Share of Costs (Line 4 minus Line 5) NOTE: This line cannot exceed the amount in Line 1.	\$ 115,611.85	
<b>C. This Payment Request and Grant Balance Remaining</b>		
7. Amount of Advance Payment Received (from Line 2a) (if no advance payment received or already accounted for, enter \$0)	\$ 0.00	
8. Amount Eligible this Claim (Line 6 minus Line 7) NOTE: This line cannot exceed the amount in Line 3.	\$ 115,611.85	Amount approved this claim →
9. Grant Balance Remaining (Line 3 minus Line 8)	\$ 0.00	
Lake & River Grants Only: Does project include State Lab of Hygiene Sample Analysis? <input type="checkbox"/> Yes <input checked="" type="checkbox"/> No		
<b>Certification</b>		
I certify that, to the best of my knowledge and belief, the eligible costs requested are in accordance with the terms of the grant agreement and that all expenditures are based on actual payments of record. This reimbursement represents the grant share due that has not been previously requested.		
Name of Authorized Representative - type or print <b>Charles Ahlborn</b>		(Area Code) Telephone Number <b>(715) 479-3747</b>
Signature of Authorized Representative 		(Area Code) FAX Number <b>(715) 479-1978</b>
Date Signed <b>12/06/07</b>		E-mail Address
<b>Space Below this Line for DNR Use Only</b>		
Grant Specialist Signature		Reimbursement Approval Date

**DNR Expense Worksheet:** Expenses herein have corresponding county vouchers to support them. All other project expenses are internal to the county and have no vouchers:

State of Wisconsin  
Department of Natural Resources  
Community Financial Assistance

**Grant Payment Worksheet**  
Form 8700-002 (R 8/03) Page 1 of 1

**Notice:** Information requested on this form is required by the Department when applying for a reimbursement of eligible expenses. The Department will not consider your payment request unless you complete and submit this form.

**Instructions:** Itemize all project expenses, including donated labor, and attach photocopies of proof of expenses and payments for each item listed. See reverse for instructions. Use additional worksheets as necessary, numbering each. Submit with Grant Payment Request, Form 8700-001, or specific grant reimbursement form, to your DNR Grant Specialist.

Does this grant project include State Lab of Hygiene sample analysis costs?  Yes  No

					<b>Project Sponsor / Management Unit Name</b> Vilas County	
					<b>Grant Number</b> ALPL-001-05	
Date Expense Incurred	Invoice #	Proof of Payment #	Payee	Eligible Project Cost Description (Check Grant Agreement)	Amount Paid	Amount Donated
04/28-30/05	None	Co. Voucher	Ted Ritter reimbursement	Coordinator training - WAL Conference registration	150.00	0.00
04/28-30/05	None	Co. Voucher	Ted Ritter reimbursement	Coordinator training - WAL Conference lodging	190.00	0.00
06/29/05	34081	Co. Voucher	Hahn Printing	Miscellaneous educational material	473.00	0.00
08/26/05	None	Co. Voucher	Big Sand Lake Club	Miscellaneous workshop expense	957.41	0.00
04/20-22/06	None	Co. Voucher	Ted Ritter reimbursement	Coordinator training - WAL Conference lodging & registration	225.00	0.00
10/22/06	None	Co. Voucher	Patrick Goggin reimbursement	Miscellaneous workshop expense	337.26	0.00
04/26-28/07	None	Co. Voucher	Ted Ritter reimbursement	Coordinator training - WAL Conference registration	155.00	0.00
04/27/07	None	Co. Voucher	Ted Ritter reimbursement	Coordinator training - WAL Conference lodging	291.00	0.00
10/25/07	None	Co. Voucher	Ted Ritter reimbursement	Miscellaneous workshop expense	98.71	0.00
<b>Grant Begin Date</b> 07/01/2004	<b>Grant End Date</b> 12/31/2007				<b>Paid Subtotal</b> 2,877.38	<b>Donated Subtotal</b> 0.00
<b>Total Project Costs: Please sum all pages manually.</b> (Sum of Paid Subtotal and Donated Subtotal for all pages)					<b>\$</b>	<b>2,877.38</b>

**Project expense detail:**

Project Coordinator Wages + Benefits					
Pay Period	Reg Hrs	Wages Earned	Benefits	Wage + Benefit	Grant Total
					\$ 147,537.00
11/28/04-12/04/04	38.75	\$ 571.56	\$ 724.74	\$ 1,296.30	\$ 146,240.70
12/05/04-12/18/04	75	\$ 1,106.25	\$ 837.56	\$ 1,943.81	\$ 144,296.89
12/19/04-12/25/04	22.5	\$ 331.88	\$ 70.02	\$ 401.90	\$ 143,894.99
12-26-04-12-31-04	0	\$ -	\$ -	\$ -	\$ 143,894.99
01/01/05-01/08/05	37.5	\$ 553.12	\$ 721.07	\$ 1,274.19	\$ 142,620.80
01/09/05-01/15/05	37.5	\$ 553.12	\$ 721.07	\$ 1,274.19	\$ 141,346.61
01/16/05-01/29/05	75	\$ 1,106.25	\$ 838.01	\$ 1,944.26	\$ 139,402.35
01/30/05-02/12/05	75	\$ 1,106.25	\$ 838.01	\$ 1,944.26	\$ 137,458.09
02/13/05-02/26/05	75	\$ 1,106.25	\$ 838.01	\$ 1,944.26	\$ 135,513.83
02/27/05-03/12/05	75	\$ 1,106.25	\$ 838.01	\$ 1,944.26	\$ 133,569.57

03/13/05-03/26/05	67.5	\$ 995.63	\$ 814.62	\$ 1,810.25	\$ 131,759.33
03/27/05-04/09/05	75	\$ 1,106.25	\$ 838.01	\$ 1,944.26	\$ 129,815.07
04/11/05-04/22/05	75	\$ 1,106.25	\$ 838.01	\$ 1,944.26	\$ 127,870.81
04/25/05-05/06/05	75	\$ 1,106.25	\$ 838.01	\$ 1,944.26	\$ 125,926.55
05/09/05-05/20/05	75	\$ 1,106.25	\$ 838.01	\$ 1,944.26	\$ 123,982.29
05/23/05-06/03/05	67.5	\$ 995.63	\$ 814.62	\$ 1,810.25	\$ 122,172.04
06/06/05-06/18/05	75	\$ 1,106.25	\$ 838.01	\$ 1,944.26	\$ 120,227.78
06/20/05-07/01/05	75	\$ 1,106.25	\$ 838.01	\$ 1,944.26	\$ 118,283.52
07/04/05-07/16/05	63.5	\$ 929.25	\$ 800.57	\$ 1,729.82	\$ 116,553.70
07/18/05-07/30/05	75	\$ 1,106.25	\$ 838.01	\$ 1,944.26	\$ 114,609.44
08/01/05-08/12/05	75	\$ 1,106.25	\$ 838.01	\$ 1,944.26	\$ 112,665.18
08/15/05-08/26/05	75	\$ 1,106.25	\$ 838.01	\$ 1,944.26	\$ 110,720.92
08/29/05-09/09/05	67.5	\$ 995.63	\$ 814.69	\$ 1,810.32	\$ 108,910.60
09/12/05-09/23/05	75	\$ 1,106.25	\$ 233.87	\$ 1,340.12	\$ 107,570.48
09/26/05-10/07/05	75	\$ 1,106.25	\$ 838.01	\$ 1,944.26	\$ 105,626.22
10/10/05-10/21/05	75	\$ 1,106.25	\$ 838.01	\$ 1,944.26	\$ 103,681.96
10/24/05-11/04/05	75	\$ 1,106.25	\$ 838.01	\$ 1,944.26	\$ 101,737.70
11/07/05-11/18/05	75	\$ 1,106.25	\$ 838.01	\$ 1,944.26	\$ 99,793.44
11/19/05-12/03/05	60	\$ 900.00	\$ 798.24	\$ 1,698.24	\$ 98,095.20
12/04/05-12/17/05	75	\$ 1,143.75	\$ 849.77	\$ 1,993.52	\$ 96,101.68
12/19/05-12/31/05	60	\$ 915.00	\$ 804.71	\$ 1,719.71	\$ 94,381.97
01/01/06-01/14/06	67.5	\$ 1,029.38	\$ 829.30	\$ 1,858.68	\$ 92,523.29
01/15/06-01/28/06	75	\$ 1,143.75	\$ 853.89	\$ 1,997.64	\$ 90,525.65
01/29/06-02/11/06	75	\$ 1,143.75	\$ 853.89	\$ 1,997.64	\$ 88,528.01
02/12/06-02/25/06	75	\$ 1,143.75	\$ 853.89	\$ 1,997.64	\$ 86,530.37
02/26/06-03/11/06	75	\$ 1,143.75	\$ 853.89	\$ 1,997.64	\$ 84,532.73
03/12/06-03/25/06	37.5	\$ 571.88	\$ 122.94	\$ 694.82	\$ 83,837.91
03/26/06-04/08/06	75	\$ 1,143.75	\$ 853.89	\$ 1,997.64	\$ 81,840.27
04/09/06-04/22/06	75	\$ 1,143.75	\$ 853.89	\$ 1,997.64	\$ 79,842.63
04/23/06-05/05/06	75	\$ 1,143.75	\$ 853.89	\$ 1,997.64	\$ 77,844.99
05/06/06-05/19/06	75	\$ 1,143.75	\$ 853.89	\$ 1,997.64	\$ 75,847.35
05/22/06-06/02/06	67.5	\$ 1,029.38	\$ 829.30	\$ 1,858.68	\$ 73,988.67
06/05/06-06/16/06	75	\$ 1,143.75	\$ 853.89	\$ 1,997.64	\$ 71,991.03
06/18/06-07/07/06	67.5	\$ 1,029.38	\$ 829.29	\$ 1,858.67	\$ 70,132.36
07/09/06-07/15/06	75	\$ 1,143.75	\$ 853.89	\$ 1,997.64	\$ 68,134.72
07/17/06-07/28/06	75	\$ 1,143.75	\$ 853.89	\$ 1,997.64	\$ 66,137.08
07/31/06-08/11/06	75	\$ 1,143.75	\$ 853.89	\$ 1,997.64	\$ 64,139.44
08/13/06-08/26/06	75	\$ 1,143.75	\$ 853.89	\$ 1,997.64	\$ 62,141.80
08/27/06-09/09/06	67.5	\$ 1,029.38	\$ 829.29	\$ 1,858.67	\$ 60,283.13
09/10/06-09/23/06	75	\$ 1,143.75	\$ 245.91	\$ 1,389.66	\$ 58,893.47
09/24/06-10/07/06	75	\$ 1,143.75	\$ 853.89	\$ 1,997.64	\$ 56,895.83
10/08/06-10/21/06	75	\$ 1,143.75	\$ 853.89	\$ 1,997.64	\$ 54,898.19
10/22/06-11/03/06	75	\$ 1,143.75	\$ 853.89	\$ 1,997.64	\$ 52,900.55
11/04/06-11/18/06	75	\$ 1,143.75	\$ 853.89	\$ 1,997.64	\$ 50,902.91
11/19/06-12/02/06	60	\$ 926.25	\$ 1,062.77	\$ 1,989.02	\$ 48,913.89
12/03/06-12/16/06	75	\$ 1,181.25	\$ 1,118.91	\$ 2,300.16	\$ 46,613.73
12/17/06-12/31/06	60	\$ 945.00	\$ 1,068.75	\$ 2,013.75	\$ 44,599.98

01/01/07-01/13/07	67.5	\$ 1,063.12	\$ 1,095.01	\$ 2,158.13	\$ 42,441.85
01/14/07-01/27/07	75	\$ 1,181.25	\$ 1,080.55	\$ 2,261.80	\$ 40,180.05
01/28/07-02/10/07	75	\$ 1,181.25	\$ 262.59	\$ 1,443.84	\$ 38,736.21
02/11/07-02/23/07	75	\$ 1,181.25	\$ 971.37	\$ 2,152.62	\$ 36,583.59
02/26/07-03/09/07	75	\$ 1,181.25	\$ 971.37	\$ 2,152.62	\$ 34,430.97
03/12/07-03/23/07	75	\$ 1,181.25	\$ 262.59	\$ 1,443.84	\$ 32,987.13
03/25/07-04/07/07	67.5	\$ 1,063.12	\$ 945.11	\$ 2,008.23	\$ 30,978.90
04/08/07-04/21/07	62	\$ 976.50	\$ 925.85	\$ 1,902.35	\$ 29,076.55
04/22/07-05/04/07	52.5	\$ 826.88	\$ 892.60	\$ 1,719.48	\$ 27,357.07
05/05/07-05/19/07	75	\$ 1,181.25	\$ 971.37	\$ 2,152.62	\$ 25,204.45
05/20/07-06/02/07	67.5	\$ 1,064.19	\$ 945.34	\$ 2,009.53	\$ 23,194.92
06/03/07-06/16/07	75	\$ 1,181.25	\$ 971.37	\$ 2,152.62	\$ 21,042.30
06/17/07-06/30/07	75	\$ 1,181.25	\$ 971.37	\$ 2,152.62	\$ 18,889.68
07/01/07-07/14/07	67.5	\$ 1,063.12	\$ 945.11	\$ 2,008.23	\$ 16,881.45
07/15/07-07/28/07	75	\$ 1,181.25	\$ 971.37	\$ 2,152.62	\$ 14,728.83
07/29/07-08/11/07	75	\$ 1,181.25	\$ 971.37	\$ 2,152.62	\$ 12,576.21
08/12/07-08/25/07	75	\$ 1,181.25	\$ 262.59	\$ 1,443.84	\$ 11,132.37
08/26/07-09/08/07	67.5	\$ 1,063.13	\$ 945.11	\$ 2,008.24	\$ 9,124.13
09/09/07-09/22/07	60	\$ 945.00	\$ 918.85	\$ 1,863.85	\$ 7,260.28
09/23/07-10/06/07	75	\$ 1,181.25	\$ 971.37	\$ 2,152.62	\$ 5,107.66
10/07/07-10/20/07	75	\$ 1,181.25	\$ 971.37	\$ 2,152.62	\$ 2,955.04
10/21/07-11/03/07	75	\$ 1,181.25	\$ 971.37	\$ 2,152.62	\$ 802.42
11/04/07-11/17/07	75	\$ 1,181.25	\$ 971.37	\$ 2,152.62	\$ (1,350.20)
11/18/07-12/01/07	60	\$ 945.00	\$ 997.95	\$ 1,942.95	\$ (3,293.15)
12/02/07-12/15/07	75	\$ 1,181.25	\$ 1,050.47	\$ 2,231.72	\$ (5,524.87)
12/16/07-12/31/07	67.5	\$ 1,063.13	\$ 236.33	\$ 1,299.46	\$ (6,824.33)
	5714.25		TOTAL	\$154,361.33	

PROJECT COORDINATOR TRAINING					
Date	Register Fee	Lodging	Total \$	Grant Total	Reason for travel
				\$ 2,316.00	
04/28/2005-04/30/2005	\$ 150.00	\$ 190.00	\$ 340.00	\$ 1,976.00	2005 WAL Lakes Conference
04/20/2006-04/22/2006	\$ 35.00	\$ 190.00	\$ 225.00	\$ 1,751.00	2006 WAL Lakes Conference
04/26/2007-04/28/2007	\$ 155.00	\$ 291.00	\$ 446.00	\$ 1,305.00	2007 WAL Lakes Conference
		TOTAL.	\$ 1,011.00		

PROJECT COORDINATOR TRAVEL					
Date	Miles	\$ per mile	Total	Grant Total	Reason for travel
				\$ 3,100.00	
12/01/04	46	\$ 0.375	\$ 17.25	\$ 3,082.75	AIS Grant Workshop - Rhineland
01/03/05	30	\$ 0.405	\$ 12.15	\$ 3,070.60	Washington town board mtg
01/06/05	60	\$ 0.405	\$ 24.30	\$ 3,046.30	Conover town bd mtg & LdF Tribal mtg

01/14/05	48	\$ 0.405	\$ 19.44	\$ 3,026.86	Taught Conserve School Class
02/17/05	52	\$ 0.405	\$ 21.06	\$ 3,005.80	Vilas Unit, WI Towns Assoc. - Bld. Jnct.
02/25/05	52	\$ 0.405	\$ 21.06	\$ 2,984.74	AIS Research Mtg. - Bld. Jnct.
03/03/05	80	\$ 0.405	\$ 32.40	\$ 2,952.34	Presque Isle Town Board Mtg.
03/09/05	70	\$ 0.405	\$ 28.35	\$ 2,923.99	LDF Town Lakes Committee Mtg.
03/10/05	48	\$ 0.405	\$ 19.44	\$ 2,904.55	Minocqua Rotary Club Presentation
03/15/05	52	\$ 0.405	\$ 21.06	\$ 2,883.49	AIS Edu. & Pub. Aware Mtg. - Bld. Jnct.
04/02/05	24	\$ 0.405	\$ 9.72	\$ 2,873.77	Pickerel Lake Assoc. Mtg. - Sayner
04/02/05	24	\$ 0.405	\$ 9.72	\$ 2,864.05	Pickerel Lake Assoc. Mtg. - Sayner
04/07/05	216	\$ 0.405	\$ 87.48	\$ 2,776.57	AIS Conference , Cable, WI
04/14/05	20	\$ 0.405	\$ 8.10	\$ 2,768.47	4 Cnty LWCD mtg, Three Lakes
04/20/05	48	\$ 0.405	\$ 19.44	\$ 2,749.03	Lac du Flambeau Town Lakes Comm.
05/18/05	48	\$ 0.405	\$ 19.44	\$ 2,729.59	Lac du Flambeau Lakes Committee mtg.
05/19/05	28	\$ 0.405	\$ 11.34	\$ 2,718.25	AIS Partnership Public Mtg - Arvor Vitae
05/23/05	30	\$ 0.405	\$ 12.15	\$ 2,706.10	Washington Lakes Committee mtg.
05/25/05	65	\$ 0.405	\$ 26.33	\$ 2,679.78	Notre Dame Rsrch Cntr - Musky Tourny
05/28/05	70	\$ 0.405	\$ 28.35	\$ 2,651.43	Papoose Lake AIS Presentation
05/29/05	14	\$ 0.405	\$ 5.67	\$ 2,645.76	Lost Lake AIS Presentation
06/02/05	33	\$ 0.405	\$ 13.37	\$ 2,632.39	Gov. Musky Opener - Indian Shores
06/15/05	138	\$ 0.405	\$ 55.89	\$ 2,576.50	Town meetings, DNR flyover planning
06/20/05	52	\$ 0.405	\$ 21.06	\$ 2,555.44	AIS video planning
06/21/05	100	\$ 0.405	\$ 40.50	\$ 2,514.94	Aerial EWM video/Bldr Jnct twn bd mtg
06/25/05	20	\$ 0.405	\$ 8.10	\$ 2,506.84	Little Arbor Vitae Lk. Dist. Ann'l mtg.
06/26/05	52	\$ 0.405	\$ 21.06	\$ 2,485.78	N & S Twin Lakes Assoc. Ann'l mtg.
07/01/05	34	\$ 0.405	\$ 13.77	\$ 2,472.01	Long Lake Board Mtg
07/16/05	80	\$ 0.405	\$ 32.40	\$ 2,439.61	Big Sand Lake Ann'l Assoc. Mtg
07/19/05	32	\$ 0.405	\$ 12.96	\$ 2,426.65	LDF AIS video preparation
07/30/05	24	\$ 0.405	\$ 9.72	\$ 2,416.93	Plum/Ballard/Irving/White Birch mtgs
08/01/05	38	\$ 0.405	\$ 15.39	\$ 2,401.54	UNDERC/Papoose Lake Mtg
08/02/05	46	\$ 0.405	\$ 18.63	\$ 2,382.91	AIS grant meeting
08/03/05	48	\$ 0.405	\$ 19.44	\$ 2,363.47	Prep for Legislative Field Day
08/09/05	26	\$ 0.405	\$ 10.53	\$ 2,352.94	County Chamber of Commerce mtg.
08/13/05	84	\$ 0.405	\$ 34.02	\$ 2,318.92	Harris Lake Assoc. meeting
08/14/05	38	\$ 0.405	\$ 15.39	\$ 2,303.53	Shishebogema/Gunlock Lakes meeting
08/16/05	100	\$ 0.405	\$ 40.50	\$ 2,263.03	Boat survey of Eagle River Chain
08/17/05	52	\$ 0.405	\$ 21.06	\$ 2,241.97	Town Lakes Committee meeting
08/23/05	45	\$ 0.405	\$ 18.23	\$ 2,223.75	Boat visit to Big Sand Lake
08/25/05	38	\$ 0.405	\$ 15.39	\$ 2,208.36	Set up for Legislative Field Day
08/26/05	38	\$ 0.405	\$ 15.39	\$ 2,192.97	Legislative Field Day
08/27/05	34	\$ 0.405	\$ 13.77	\$ 2,179.20	AIS Presentation
08/29/05	66	\$ 0.405	\$ 26.73	\$ 2,152.47	Town Lakes Committee Mtg
08/31/05	75	\$ 0.405	\$ 30.38	\$ 2,122.09	AIS grant prep mtg, boat visit to EWM lakes
09/01/05	62	\$ 0.485	\$ 30.07	\$ 2,092.02	Area Lakes Assoc. mtg
09/03/05	80	\$ 0.485	\$ 38.80	\$ 2,053.22	Wildcat Lake Assoc. mtg
09/09/05	66	\$ 0.485	\$ 32.01	\$ 2,021.21	Musky tourney AIS presentaion
09/10/05	40	\$ 0.485	\$ 19.40	\$ 2,001.81	Sea plane fly-in AIS presentation
09/12/05	52	\$ 0.485	\$ 25.22	\$ 1,976.59	AIS grant prep mtg
09/21/05	52	\$ 0.485	\$ 25.22	\$ 1,951.37	Town Lakes Committee Mtg

10/04/05	28	\$ 0.485	\$ 13.58	\$ 1,937.79	Town Bd. AIS funding request
10/05/05	45	\$ 0.485	\$ 21.83	\$ 1,915.97	AIS Grant Commttees & Town Board Mtgs.
10/12/05	76	\$ 0.485	\$ 36.86	\$ 1,879.11	Town Lakes Committee initial mtg
10/13/05	28	\$ 0.485	\$ 13.58	\$ 1,865.53	Plum Lake Lakes Comm initial mtg
10/19/05	52	\$ 0.485	\$ 25.22	\$ 1,840.31	GLIFWC AIS Confernece
10/20/05	52	\$ 0.485	\$ 25.22	\$ 1,815.09	GLIFWC AIS Confernece
12/01/05	66	\$ 0.485	\$ 32.01	\$ 1,783.08	AIS Partnership Meeting Planning
12/06/05	66	\$ 0.485	\$ 32.01	\$ 1,751.07	AIS Partnership Meeting
12/13/05	76	\$ 0.485	\$ 36.86	\$ 1,714.21	Town Lakes Committee Mtg
12/19/05	28	\$ 0.485	\$ 13.58	\$ 1,700.63	Town Lakes Committee Mtg
01/05/06	28	\$ 0.445	\$ 12.46	\$ 1,688.17	Butternut/Franklin Lake Assoc Mtg
01/09/06	42	\$ 0.445	\$ 18.69	\$ 1,669.48	DNR / Nrthrn. Env. Grant funding mtg.
01/17/06	58	\$ 0.445	\$ 25.81	\$ 1,643.67	Town Lakes Committee mtg
03/21/06	76	\$ 0.445	\$ 33.82	\$ 1,609.85	Town Lakes Committee Mtg
03/22/06	54	\$ 0.445	\$ 24.03	\$ 1,585.82	AIS Presentation & Town Board mtg
04/19/06	52	\$ 0.445	\$ 23.14	\$ 1,562.68	Town Lakes Committee Mtg
05/03/06	34	\$ 0.445	\$ 15.13	\$ 1,547.55	Phelps Area Lakes Prnrshp Mtg
05/11/06	95	\$ 0.445	\$ 42.28	\$ 1,505.27	Town Lakes Committee Mtg
05/16/06	80	\$ 0.445	\$ 35.60	\$ 1,469.67	Town Lakes Committee Mtg
05/17/06	68	\$ 0.445	\$ 30.26	\$ 1,439.41	Telecommunicators AIS Awareness
05/18/06	24	\$ 0.445	\$ 10.68	\$ 1,428.73	Town Lakes Committee Mtg
05/23/06	66	\$ 0.445	\$ 29.37	\$ 1,399.36	Town Lakes Committee Mtg
06/01/06	230	\$ 0.445	\$ 102.35	\$ 1,297.01	Invasive Spec. Council Mtg & award
06/02/06	230	\$ 0.445	\$ 102.35	\$ 1,194.66	Invasive Spec. Council Mtg & award
06/08/06	34	\$ 0.445	\$ 15.13	\$ 1,179.53	Phelps Area Lakes Prnrshp mtg
06/15/06	48	\$ 0.445	\$ 21.36	\$ 1,158.17	Lake monitoring training session
06/22/06	30	\$ 0.445	\$ 13.35	\$ 1,144.82	CBCW Training
06/22/06	24	\$ 0.445	\$ 10.68	\$ 1,134.14	Plum Lake Twn Lakes Comm mtg
06/25/06	48	\$ 0.445	\$ 21.36	\$ 1,112.78	N&S Twin Lakes Annl mtg
06/28/06	50	\$ 0.445	\$ 22.25	\$ 1,090.53	Rusty Crayfish research mtg, Trout Lake
07/05/06	230	\$ 0.445	\$ 102.35	\$ 988.18	Natural Lakes Association AIS presentation
07/13/06	230	\$ 0.445	\$ 102.35	\$ 885.83	EWM boat survey
07/15/06	34	\$ 0.445	\$ 15.13	\$ 870.70	Big Sand Lake Assn. annl mtg & AIS update
07/19/06	48	\$ 0.445	\$ 21.36	\$ 849.34	Town Lakes Committee mtg
07/20/06	30	\$ 0.445	\$ 13.35	\$ 835.99	Evening with AIS researchers
07/20/06	24	\$ 0.445	\$ 10.68	\$ 825.31	Trout Lake mtg, Rusty Crayfish removal
07/21/06	48	\$ 0.445	\$ 21.36	\$ 803.95	Northwoods Lakes Conference
08/03/06	66	\$ 0.445	\$ 29.37	\$ 774.58	AIS grant status review & adjustment
08/05/06	24	\$ 0.445	\$ 10.68	\$ 763.90	Watersmeet Lake & River Assoc mtg
08/05/06	56	\$ 0.445	\$ 24.92	\$ 738.98	Gresham Lakes Assoc. annual mtg
08/15/06	82	\$ 0.445	\$ 36.49	\$ 702.49	Natural Resources Board AIS presentation
08/16/06	52	\$ 0.445	\$ 23.14	\$ 679.35	Town Lakes Committee mtg
08/16/06	70	\$ 0.445	\$ 31.15	\$ 648.20	Cooperative Weed Mgmt Area mtg
08/17/06	95	\$ 0.445	\$ 42.28	\$ 605.93	Town Lakes Committee mtg
09/06/06	58	\$ 0.445	\$ 25.81	\$ 580.12	Gresham Lakes Assoc. Board, EWM mtg.
09/09/06	24	\$ 0.445	\$ 10.68	\$ 569.44	Town Lakes Committee formation mtg.
09/20/06	52	\$ 0.445	\$ 23.14	\$ 546.30	Town Lakes Committee mtg.
09/25/06	24	\$ 0.445	\$ 10.68	\$ 535.62	Town Lakes Committee formation mtg.



09/26/06	70	\$ 0.445	\$ 31.15	\$ 504.47	Town Lakes Committee mtg.
09/28/06	90	\$ 0.445	\$ 40.05	\$ 464.42	Town Lakes Committee mtg.
09/29/06	42	\$ 0.445	\$ 18.69	\$ 445.73	Boat landing signage photos
10/03/06	58	\$ 0.445	\$ 25.81	\$ 419.92	Gresham Lakes Assoc. Board, EWM mtg.
10/10/06	54	\$ 0.445	\$ 24.03	\$ 395.89	Western U.P. CWMA mtg.
10/17/06	40	\$ 0.445	\$ 17.80	\$ 378.09	DNR, Gresham Lakes EWM planning mtg
10/18/06	52	\$ 0.445	\$ 23.14	\$ 354.95	Town Lakes Committee mtg.
10/26/06	104	\$ 0.445	\$ 46.28	\$ 308.67	Winchester Town Lakes Committee mtg.
11/09/06	310	\$ 0.445	\$ 137.95	\$ 170.72	NE WI AIS Grant Workshop Presentation
11/15/06	65	\$ 0.445	\$ 28.93	\$ 141.79	Town Lakes Committees mtgs
11/16/06	115	\$ 0.445	\$ 51.18	\$ 90.62	Win Twn Lks Comm, Gresham Lks EWM mtg
12/12/06	70	\$ 0.445	\$ 31.15	\$ 59.47	Town Lakes Committee mtg.
02/23/07	68	\$ 0.485	\$ 32.98	\$ 26.49	Discovery Center AIS mtg
04/18/07	52	\$ 0.485	\$ 25.22	\$ 1.27	Town Lakes Committee mtg.
04/19/07	95	\$ 0.485	\$ 46.08	\$ (44.81)	Town Lakes Committee mtg.
05/16/07	52	\$ 0.485	\$ 25.22	\$ (70.03)	Town Lakes Committee mtg.
05/23/07	28	\$ 0.485	\$ 13.58	\$ (83.61)	4 County LWCC mtg.
05/24/07	24	\$ 0.485	\$ 11.64	\$ (95.25)	Town Lakes Committee mtg.
05/29/07	70	\$ 0.485	\$ 33.95	\$ (129.20)	Town Lakes Committee mtg.
05/31/07	95	\$ 0.485	\$ 46.08	\$ (175.27)	Town Lakes Committee mtg.
06/02/07	80	\$ 0.485	\$ 38.80	\$ (214.07)	CBCW Wrkshp, Nrth LkInd Disc Cntr
06/11/07	36	\$ 0.485	\$ 17.46	\$ (231.53)	Town Board Meeting
06/12/07	70	\$ 0.485	\$ 33.95	\$ (265.48)	Town Lakes Committee mtg.
06/13/07	48	\$ 0.485	\$ 23.28	\$ (288.76)	WXPR Radio Show
06/20/07	82	\$ 0.485	\$ 39.77	\$ (328.53)	Town Lakes Committee mtgs & public forum
06/23/07	52	\$ 0.485	\$ 25.22	\$ (353.75)	Lakes Fest - LWCD booth
06/26/07	70	\$ 0.485	\$ 33.95	\$ (387.70)	Town Lakes Committee mtg.
06/30/07	95	\$ 0.485	\$ 46.08	\$ (433.78)	Turtle Lakes Assoc. annl. mtg. AIS presentation
07/07/07	48	\$ 0.485	\$ 23.28	\$ (457.06)	High/Fish Trap/Rush ann. Mtg. AIS presentation
07/13/07	80	\$ 0.485	\$ 38.80	\$ (495.86)	N. LkInd. Disc. Cntr. AIS presentation mat'ls
07/14/07	95	\$ 0.485	\$ 46.08	\$ (541.93)	Conduct 2 workshops
07/18/07	52	\$ 0.485	\$ 25.22	\$ (567.15)	Town Lakes Committee mtg
07/21/07	46	\$ 0.485	\$ 22.31	\$ (589.46)	Diamond Lake Assn. ann'l meeting/AIS update
07/25/07	32	\$ 0.485	\$ 15.52	\$ (604.98)	Crystal Lake Campgrounds AIS presentation
07/26/07	30	\$ 0.485	\$ 14.55	\$ (619.53)	Town Lakes Committee mtg.
07/31/07	36	\$ 0.485	\$ 17.46	\$ (636.99)	Smoky Lake Assn. lake monitoring wrkshop
08/04/07	52	\$ 0.485	\$ 25.22	\$ (662.21)	Gresham Lakes Assoc. annl mtg & ewm mgmnt
08/05/07	32	\$ 0.485	\$ 15.52	\$ (677.73)	Shoreline Sweep support
08/15/07	52	\$ 0.485	\$ 25.22	\$ (702.95)	Town Lakes Committee mtg.
08/18/07	52	\$ 0.485	\$ 25.22	\$ (728.17)	Shoreline Sweep support
08/27/07	54	\$ 0.485	\$ 26.19	\$ (754.36)	U. S. Army Corps EWM mgmnt update
08/30/07	72	\$ 0.485	\$ 34.92	\$ (789.28)	Lake monitoring workshop - Rest Lake landing
09/13/07	19	\$ 0.485	\$ 9.22	\$ (798.50)	Green Thumbs Gardening Club AIS presentation
09/20/07	24	\$ 0.485	\$ 11.64	\$ (810.14)	Town Lakes Committee mtg
09/26/07	95	\$ 0.485	\$ 46.08	\$ (856.21)	Town Lakes Committee mtg
10/01/07	210	\$ 0.485	\$ 101.85	\$ (958.06)	AIS Coordinators mtg
10/09/07	48	\$ 0.485	\$ 23.28	\$ (981.34)	W. U.P. CWMA fall meeting.
10/17/07	52	\$ 0.485	\$ 25.22	\$ (1,006.57)	Town Lakes Committee mtg

10/25/07	52	\$ 0.485	\$ 25.22	\$ (1,031.79)	AIS Partnership mtg
10/25/07	34	\$ 0.485	\$ 16.49	\$ (1,048.28)	Town Lakes Committee mtg
11/02/07	44	\$ 0.485	\$ 21.34	\$ (1,069.62)	Gresham Lakes Assoc. Grants meeting
11/12/07	73	\$ 0.485	\$ 35.41	\$ (1,105.02)	Cisco Chain Bndry Wtrs AIS mgmnt strategy mtg
11/28/07	48	\$ 0.485	\$ 23.28	\$ (1,128.30)	Gresham Lakes Ass'n/DNR EWM review meeting
11/29/07	28	\$ 0.485	\$ 13.58	\$ (1,141.88)	Phelps Town Lakes Committee meeting
12/12/07	54	\$ 0.485	\$ 26.19	\$ (1,168.07)	Cong. Kagen staff mtg.
	<b>9506</b>		\$4,268.07		

PROJECT COORDINATOR COPIES	
Year/Mo.	Copies
2005/Jan	\$ 39.58
2005/Feb	\$ 29.54
2005/Mar	\$ 47.01
2005/Apr	\$ 61.81
2005/May	\$ 140.60
2005/Jun	\$ 140.28
2005/Jul	\$ 49.74
2005/Aug	\$ 357.91
2005/Sep	\$ 34.41
2005/Oct	\$ 47.78
2005/Nov	\$ 22.82
2005/Dec	\$ 47.25
2006/Jan	\$ 46.76
2006/Feb	\$ 25.38
2006/Mar	\$ 9.14
2006/Apr	\$ -
2006/May	\$ -
2006/Jun	\$ 95.41
2006/Jul	\$ 39.66
2006/Aug	\$ 12.22
2006/Sep	\$ 3.64
2006/Oct	\$ 190.75
2006/Nov	\$ 8.12
2006/Dec	\$ 2.87
2007/Jan	\$ 22.72
2007/Feb	\$ 8.61
2007/Mar	\$ 1.44
2007/Apr	\$ 0.88
2007/May	\$ 1.61
2007/Jun	\$ 86.70
2007/Jul	\$ 55.97
2007/Aug	\$ 4.38
2007/Sep	\$ 27.76
2007/Oct	\$ 51.73
2007/Nov	\$ 3.89

2007/Dec	
<b>TOTAL</b>	<b>\$ 1,718.37</b>

PROJECT POSTAGE			
Date	Postage	Grant Total	Reason
		\$ 1,375.00	
7-Dec-04	\$ 2.22	\$ 1,372.78	Postage for memo mailed to 6 LWCC members
14-Dec-04	\$ 6.29	\$ 1,366.49	Postage for letter of introduction mailed to 17 strategic plan partners
15-Dec-04	\$ 18.13	\$ 1,348.36	Postage for letter of introduction mailed to 49 municipality contacts
16-Dec-04	\$ 26.64	\$ 1,321.72	Postage for letter of introduction mailed to 72 lake organizations
17-Dec-04	\$ 4.07	\$ 1,317.65	Postage for letter of introduction mailed to 11 chambers of commerce
3-Jan-05	\$ 9.62	\$ 1,308.03	Postage for AIS Planning Partnership Meeting Notice (26)
14-Jan-05	\$ 15.00	\$ 1,293.03	10 Conserve School Packets
26-Jan-05	\$ 12.21	\$ 1,280.82	Postage for memo to partners without e-mail & all town chairmen
21-Feb-05	\$ 4.81	\$ 1,276.01	Postage for work group follow-up letter to 13 AIS Planning Partners
28-Feb-05	\$ 4.81	\$ 1,271.20	Postage for February progress report to 13 AIS Planning Partners
21-Mar-05	\$ 5.55	\$ 1,265.65	Ltr to marinas soliciting boat/motor/trailer
23-Mar-05	\$ 6.29	\$ 1,259.36	May Planning Partnership meeting notice
31-Mar-05	\$ 59.94	\$ 1,199.42	Guides & Bait dealers awareness session notice
5-May-05	\$ 5.55	\$ 1,193.87	May Planning Partnership meeting notice
12-Jun-05	\$ 11.10	\$ 1,182.77	Postage for July AIS project update
13-Jun-05	\$ 11.10	\$ 1,171.67	Postage for July AIS project update addendum
<b>TOTAL</b>	<b>\$ 203.33</b>		

Non-Coordinator miscellaneous expenses			
Date	Item	Cost	Purpose
07/07/04	AIS folders/handouts	\$ 75.00	Headwaters Chapter of Musky Incorporated - AIS folder packets with copied brochures, fact sheets, watchcards, key contacts, infestation database for Vilas County, etc.
07/15/04	Copies	\$ 5.00	Copies of AIS overview and planning partnership PowerPoint handouts-8 pages each/25 participants
08/02/04	Copies	\$ 2.50	Vilas County Land and Water Conservation Committee (LWCC) meeting/position description and job application packet examples for attendees
08/14/04	Copies	\$ 5.00	Van Vliet Lake Association annual meeting-AIS overview & planning partnership presentation PowerPoint handout/AIS informational handouts
08/18/04	Copies	\$ 2.50	AIS project coordinator position description and job announcement materials 2nd draft review at Land and Water Conservation Committee meeting-copies of items for review
08/27/04	Copies	\$ 10.00	North Central Land and Water Conservation Committee Summer Tour / Soil and Water Conservation Association of

			Wisconsin joint meeting & field day-AIS overview and planning partnership presentation Powerpoint handout/AIS handouts
08/31/04	Copies	\$ 2.50	AIS project coordinator position description and job announcement materials for review at Personnel Committee meeting-copies of items for review
09/05/04	Copies	\$ 18.75	AIS overview and planning partnership Powerpoint handouts/AIS handouts to Butternut-Franklin Lakes Association annual meeting participants at Eagle Waters Resort, Eagle River
09/08/04	Classified ad	\$ 117.60	Classified ad-job announcement for AIS project coordinator in Vilas County News-Review-week 1
09/10/04	Classified ad	\$ 103.50	Classified ad-job announcement for AIS project coordinator in Lakeland Times - Week 1
09/15/04	Classified ad	\$ 117.60	Classified ad-job announcement for AIS project coordinator in Vilas County News-Review-week 2
09/17/04	Classified ad	\$ 103.50	Classified ad-job announcement for AIS project coordinator in Lakeland Times - Week 2
09/22/04	Classified ad	\$ 117.60	Classified ad-job announcement for AIS project coordinator in Vilas County News-Review-week 3
09/22/04	Copies	\$ 22.50	Land and Water Conservation Committee review of initial candidate application packages for the AIS project coordinator position during Land and Water Conservation Committee meeting--multiple copies of each candidate's application package (5 candidates to date)
09/24/04	Classified ad	\$ 103.50	Classified ad-job announcement for AIS project coordinator in Lakeland Times - Week 3
10/12/04	Copies	\$ 63.00	Finished organizing, reviewing, and making copies of AIS project coordinator candidates' resumes / application packages for upcoming review by LWCC--copies of 17 candidate application packages
11/01/04	Copies	\$ 5.00	AIS project coordinator interviews held by the Land and Water Conservation Committee/scoring forms and benefits information copies for each candidate
11/16/04	Copies	\$ 10.00	AIS overview and planning partnership talk to Master Gardeners group at evening session--27 students; AIS planning partnership PowerPoint handout/AIS handouts
12/02/04	Copies	\$ 15.00	AIS overview and planning partnership talk for the Wisconsin Land and Water Conservation Association (WLWCA ) conference session/AIS planning partnership PowerPoint handout & AIS materials
04/18/05	470 Letters mailed	\$ 235.00	ERCLA letter to resident property owners
05/10/05	Labels printed	\$ 60.90	Labels
06/09/05	UPS Charges	\$ 7.87	AIS materials to Town of Manitowish Waters
06/09/05	UPS Charges	\$ 8.59	Vilas AIS brochures to Jue Duller, Arbor Vitae
06/29/05	Copies	\$ 1.75	Copies furnished to AIS infestation mngt team mtg
06/29/05	Project brochures	\$ 473.00	AIS Partnership brochures
08/26/05	Packets	\$ 500.00	Folders for Legislative Field Day Event
08/26/05	Food - Big Sand Club	\$ 957.41	Meals at Big Sand Club Leg. Field Day
08/26/05	Food - Picnic	\$ 251.95	Food for informal cookout Leg. Field Day
09/12/05	50 Letters mailed	\$ 18.50	
06/10/06	CDs & Cases	\$ 75.00	Hand out mat'ls for AIS Lake Monitoring trng.
07/26/06	Lakeland Times printing	\$ 915.00	Printing cost for 12 page AIS special edition
10/22/06	Groceries	\$ 265.83	Food for AIS partnership annual mtg.
10/22/06	Groceries	\$ 41.75	Food for AIS partnership annual mtg.
10/22/06	Paper goods	\$29.68	Paper goods for AIS partnership mtg. meal
10/25/07	Groceries	\$98.71	AIS planning partnership annual meeting refreshments
		<b>\$4,840.99</b>	

All of the above Project expenses are totaled in the following table:

PROJECT TOTAL EXPENSES	
Wages + benefits	\$ 154,361.33
Travel	\$ 4,241.88
Training	\$ 1,011.00
Copies	\$ 1,718.37
Postage	\$ 203.33
Miscellaneous	\$ 5,481.00
<b>TOTAL</b>	<b>\$ 167,016.91</b>

**Project in-kind detail:**

In-kind contributions of time and mileage were accumulated over the course of the project for:

1. Public partners (non-Vilas County staff)
2. Vilas County staff (other than Project Coordinator)

Spreadsheets containing the detail of these contributions are too lengthy to appear on the pages of this report. The detail is therefore provided on the compact disc that accompanies this report.

End of report

## Appendix:

**Project Coordinator's editorial comments:** The following comments are exclusively those of the Vilas County AIS Project Coordinator and do not necessarily have the support of the Vilas County Land & Water Conservation Department/Committee or the Vilas County AIS Partnership. Individual participants came into the Partnership with widely varying attitudes and levels of knowledge concerning AIS. Some people knew little to nothing other than that lakes were at risk. Others had pre-conceived ideas about how invasive species traveled and whose fault it was they were arriving in "their" lakes. Opinions and philosophies, particularly regarding the DNR and its role in allowing, preventing and managing AIS, were initially very diverse.

At conclusion of the project, the majority of participants have arrived at a common level of knowledge and understanding. A plateau has been reached which has quieted some of the non-productive debate and has enabled more consistent thinking and efficient forward movement. However, there is also a sense of common frustration regarding the state of AIS prevention and infestation management in Wisconsin. It is a frustration beyond the ability of local partnerships to overcome.

Public perception is that the State has failed to demonstrate an adequate commitment to; (1) Preventing the spread of; (2) Understanding; and (3) Providing for effective management of AIS. The accuracy of that statement can be debated, but not the fact that people generally believe it to be true.

1. **Prevention** efforts in Vilas County reached a level beyond what had been targeted at the initiation of this project. Most of the 25,000 hours of volunteer time logged by Partnership volunteers have been associated with prevention efforts. Still, invasive species are spreading. Three additional Vilas County lakes were found to harbor early stage EWM infestations during the course of this project and another has become home to Spiny water fleas. More new arrivals are probably likely in spite of high public awareness and impressive prevention efforts. Current programs are inadequate to achieve optimal levels of preventing the spread of AIS.

The Clean Boats, Clean Waters (CBCW) program is excellent, but limited in effectiveness. It provides a mechanism for prompting changes in boater behavior through public education, but it does little to contain infestations because its efforts are typically concentrated at the wrong places. It is an unrealistic expectation of the CBCW program to prevent the spread of AIS by placing volunteers at boat landings of the 95% of water bodies that are presently uninfected while doing little to nothing to contain infestations within the 5% that are.

Effective containment requires two critical commitments from the State, both of which are presently missing:

- A. **Containment laws** that prohibit movement of watercraft and related equipment away from infected waters without first complying with reasonably effective cleaning procedures

appropriate for the invasive species known to be in the water body.

B. **Enforcement** of the containment laws.

Placing enforcement personnel at landings of infected water bodies and providing them with laws designed to promote containment would do much more to prevent the spread of AIS than relying on the present CBCW program.

Furthermore, the CBCW program is not sustainable long term. While volunteerism can be strong initially, it typically fades quickly, especially in the northern region of WI. Very few (if any) boat landings in Vilas County have predictable periods of traffic heavy enough to warrant strong CBCW volunteerism. People are not inclined to spend time sitting at landings where even a busy day produces no more than a handful of boats coming and going from sunup to sunset.

2. **Understanding** not only how individual species spread and which water bodies are susceptible to them, but also how best to manage infestations are topics not well understood. Considering how long some of these species have been in Wisconsin, many people are frustrated that more isn't known about water body vulnerability and species management. It isn't necessarily clear who should be doing more research, but public opinion is that more research is needed and that the State should be sponsoring it. Again, the accuracy of this perception may be debatable, but not the fact that the opinion is commonly held by the public.

The present approach of assuming all waters are susceptible to all species loses credibility with time. For instance, Vilas County lakes have no doubt been repeatedly exposed to Zebra mussels. This species is found to the north, south, east and west of Vilas County in water bodies well within 100 miles, yet no local infestations have been detected. A respected University of Wisconsin researcher believes that water chemistry in many lakes in and around Vilas County is not suitable for Zebra mussels survival, yet no information has been shared that might help the public assess vulnerability of individual water bodies. Therefore, in the interest of hopefully preventing the infestation of a species for which there is no known management, the public has no choice but to assume all area lakes are at risk and to dedicate time to education and prevention efforts that may not be necessary locally.

Eurasian watermilfoil is an even better example. The uncertainty of how best to manage EWM, the potential disastrous results of not managing it or of managing it incorrectly, and the high cost of chemical control prompt public panic at the first sighting of EWM. Yet, it is apparent that not all lakes are vulnerable to the same degree, but no scientific based information is available to the public regarding how to assess water body susceptibility.

The Spiny waterflea was recently found in Stormy Lake in Vilas County, only the second inland lake in Wisconsin known to harbor this species. Little seems to be known about how this creature spreads, what types of water bodies are most vulnerable to it or what impact it might have. It seems that Stormy Lake could present a research opportunity to find answers to some of these questions, yet no announcement has been made that such research is being considered. Again, accurate or not, public perception is that the opportunity for research on Stormy Lake is being ignored.

More information could be shared regarding ongoing research. The public is hungry for information that could calm hysteria and improve the effectiveness and efficiency of volunteer dependent prevention programs.

3. **Providing for effective management** means not only research and development of appropriate management practices, but also significant increases in State funding to lift the financial burden of management from the shoulders of local property owners. Increases in the AIS grant program from \$.5 million in 2004 to over \$7 million in 2009 and boosting the State cost share of grant funded projects from 50% to 75% have been positive changes, but beefing up the grant program is not enough on its own.

The current policy of the State is that nothing is done to manage infestations unless action is initiated voluntarily at the local level. If local efforts are not initiated, the State does nothing to manage infestations and little to prevent the outward spread from infected water bodies. This reflects lack of meaningful State commitment to slowing the spread of AIS.

An ongoing example of this situation is Boot Lake in Vilas County. DNR point intercept plant studies confirm that EWM is well established in the lake. While much has been done with DNR support to implement management programs on most other area lakes known to contain EWM, Boot Lake remains the exception because it lacks an effective lake organization and no local governmental unit has stepped up to assume responsibility for a management program. Boot Lake is popular with transient musky anglers. It is regarded by many, especially by property owners on nearby lakes not yet infected with EWM, to be a likely source of ongoing future new infestations.

Two changes in Wisconsin's AIS prevention/management philosophy are suggested:

- A. **Containment:** Section 30.175 of Wisconsin Statutes presently states that, *"No person may place or use a boat or boating equipment or place a boat trailer in navigable water if the person has reason to believe that the boat, boat trailer, or boating equipment has any aquatic plants attached."* No provision of the current law prohibits the movement of invasive species out of



contaminated water bodies other than the VHS emergency rule presently in effect.

Laws, and enforcement of them, are needed that require all users of State water bodies to clean all equipment in accordance with reasonably effective, species specific sanitizing procedures before leaving the water bodies. The 2007-09 State budget enables the DNR to hire seasonal “Boat Ambassadors” and to empower them with authority to enforce AIS laws. The Boat Ambassador program would be far more effective if enforcement personnel were:

1. Armed with laws designed to promote containment
2. Concentrated at boat landings of waters known to contain invasive species.

Past DNR Secretary Hassett forwarded proposed AIS legislation to the Natural Resources Board in December, 2006. The board endorsed the proposed laws and sent them on for Legislative drafting. It seems no further development of the legislation has occurred. While some of the provisions proposed by Secretary Hassett likely need some modification, they provide a good foundation from which much needed laws could emerge. Further action on the proposed legislation should be prioritized.

When those new laws become a reality, State funding needs to be allocated to support a meaningful enforcement program. Until these things happen, the State will not have adopted a containment philosophy nor made an appropriate commitment to confining invasive species to infected waters.

- B. **Mandatory infestation management:** Not all infestations of AIS need be, or can be managed. Some species do not necessarily present risks worthy of management efforts, (such as minor Rusty crayfish populations), for others, no methods of management have been found (such as Zebra mussel infestations). Other species, specifically plants, can but needn't always be managed. This variability of when and how to initiate management programs results in confusion and sometimes inappropriate response by the public, especially to new findings of infestations.

Species specific criteria could be established to acknowledge under what circumstances infestations must be managed (such as the aforementioned EWM infestation in Boot Lake). It should then be the responsibility of the State to see that appropriate management plans are implemented when infestations qualify as “must manage”.

This approach needn't place the management burden solely on the State. Incentives should be established that encourage local

lake organizations and/or local governmental bodies to play primary roles in infestation management. This approach would, however, eliminate water bodies with “highly contagious” infestations from being left totally unmanaged and becoming sources for new infestations.

**Closing remarks:** The DNR is generally looked upon by the public as having sole responsibility for State adherence to the principle of the Public Trust Doctrine, yet the DNR is not the State, but merely an agency of it with limitations in authority. The public often overlooks its role in helping fulfill responsibilities of the State.

The Vilas County AIS initiative was a pilot program to assess the effectiveness of local grassroots partnerships with county level coordination services. Perhaps the most significant benefit of such partnerships is yet to be realized. The first ever gathering of state-wide county, tribal and state AIS personnel this past October (arranged for by DNR staff) provided a hint of what local partnerships coming together at the state level might be able to accomplish. This budding coalition could become influential in prompting some version of the above recommendations for meaningful changes in State commitment to a stronger AIS program.

On behalf of the volunteers who have supported this initiative, especially those whose names and faces remain unknown, it has been a pleasure to have participated in this project.