

Local Watershed Restoration

Outline

Why Focus on Local Efforts in a Large Basin?

Current Initiatives

Funding and Technical Assistance

Local Makes Sense!



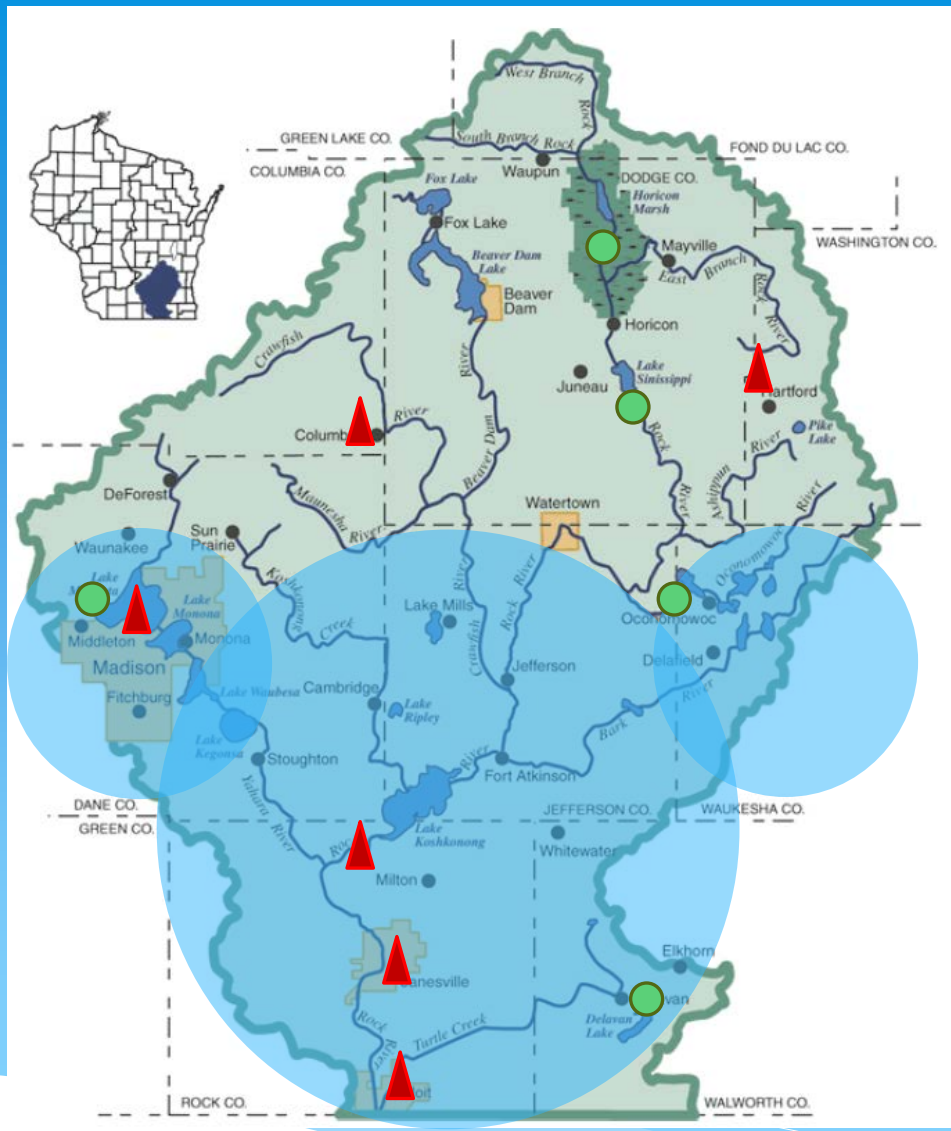


Local is (often) better

- Forming social networks (partnerships)
- Lower overhead costs (volunteers)
- Getting media attention (smaller markets)
- Identifying and monitor impairments
- Documenting improvement



- Horicon Marsh
- Lake Sinissippi
- Yahara Pride
- Mason Creek
- Delavan Lake WIN
- Waukesha County Stormwater Group
- MAMSwP
- Rock River Stormwater Group



- △ Yahara WINS
- △ Edgerton
- △ Janesville
- △ Hartford
- △ Columbus
- △ Beloit

Other local efforts:

Companion Website

<http://fyi.uwex.edu/watershedplanning/>

A Citizen's Guide to Watershed Planning

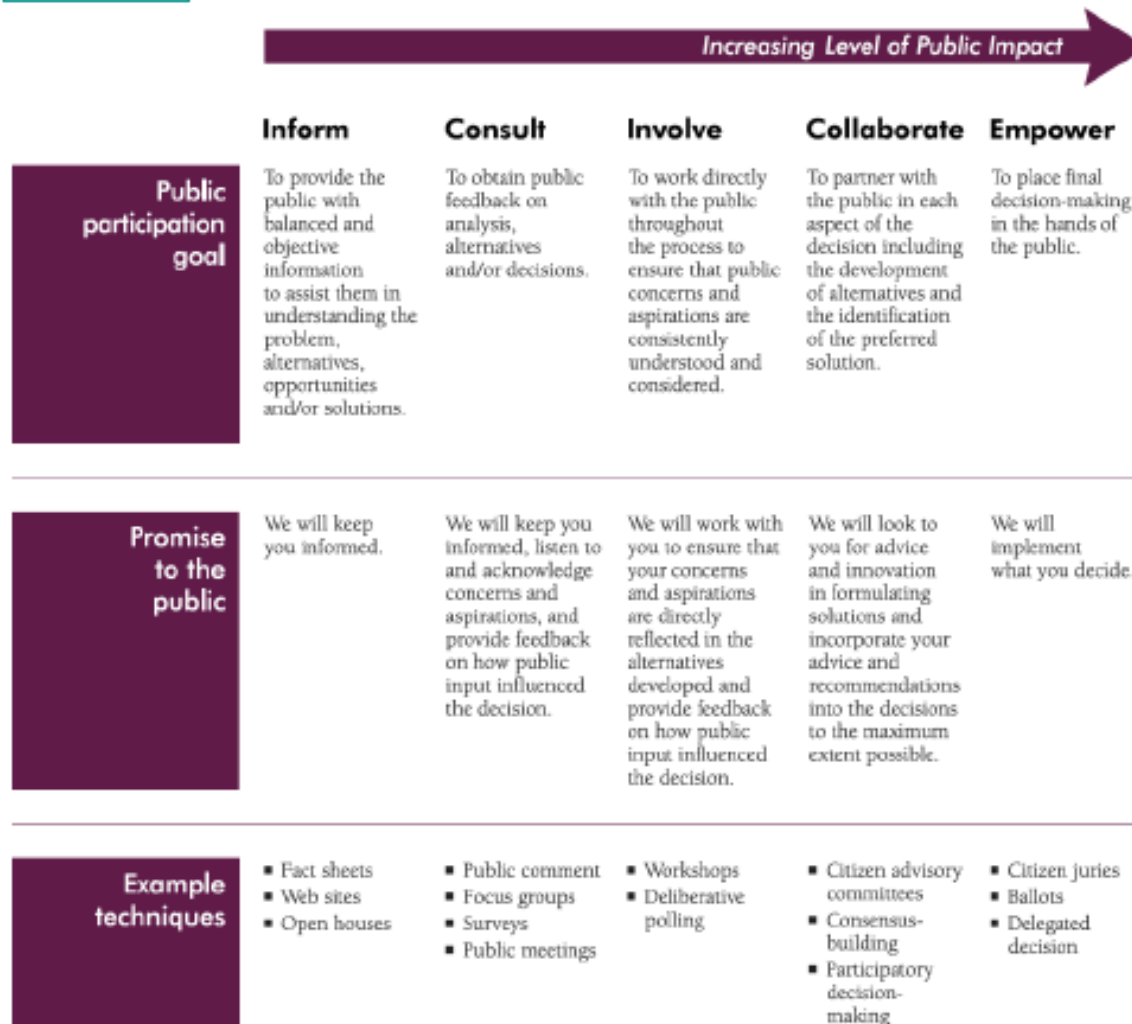
in WISCONSIN

A photograph of a stream flowing through a forest. The water is clear and flows over mossy rocks. The surrounding trees are green and dense, creating a lush environment.

The Framework for Protecting or Restoring Local Water Resources

FIGURE 3.1

Spectrum of public participation.



*Basic steps to a
citizen-driven
watershed planning
process:*



EPA's Nine Key Elements

1. *Identification of causes of impairment and pollutant sources to achieve needed pollutant load reductions, and any other goals identified in the watershed plan.*
2. **An estimate of the pollutant load reductions expected from any recommended management measures.**
3. *Description of management measures needed to achieve load reductions, and a description of the critical geographical areas where those measures are needed.*
4. **Estimates of technical and financial assistance needed, costs, and/or the sources and authorities that will be relied upon to implement the plan.**
5. *Information and education component.*
6. **Schedule for implementing the nonpoint source management measures identified in the plan.**
7. *Description of the interim measurable milestones.*
8. **A set of criteria that can be used to determine whether pollutant load reductions are being achieved over time, and how the plan will be reevaluated.**
9. *A monitoring component to evaluate the effectiveness of the implementation efforts over time.*