






Onterra LLC
 Lake Management Planning
 815 Prosper Road
 De Pere, WI 54115
 920.338.8860
 www.onterra-eco.com

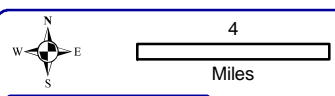
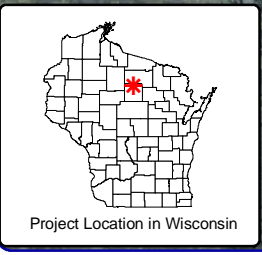
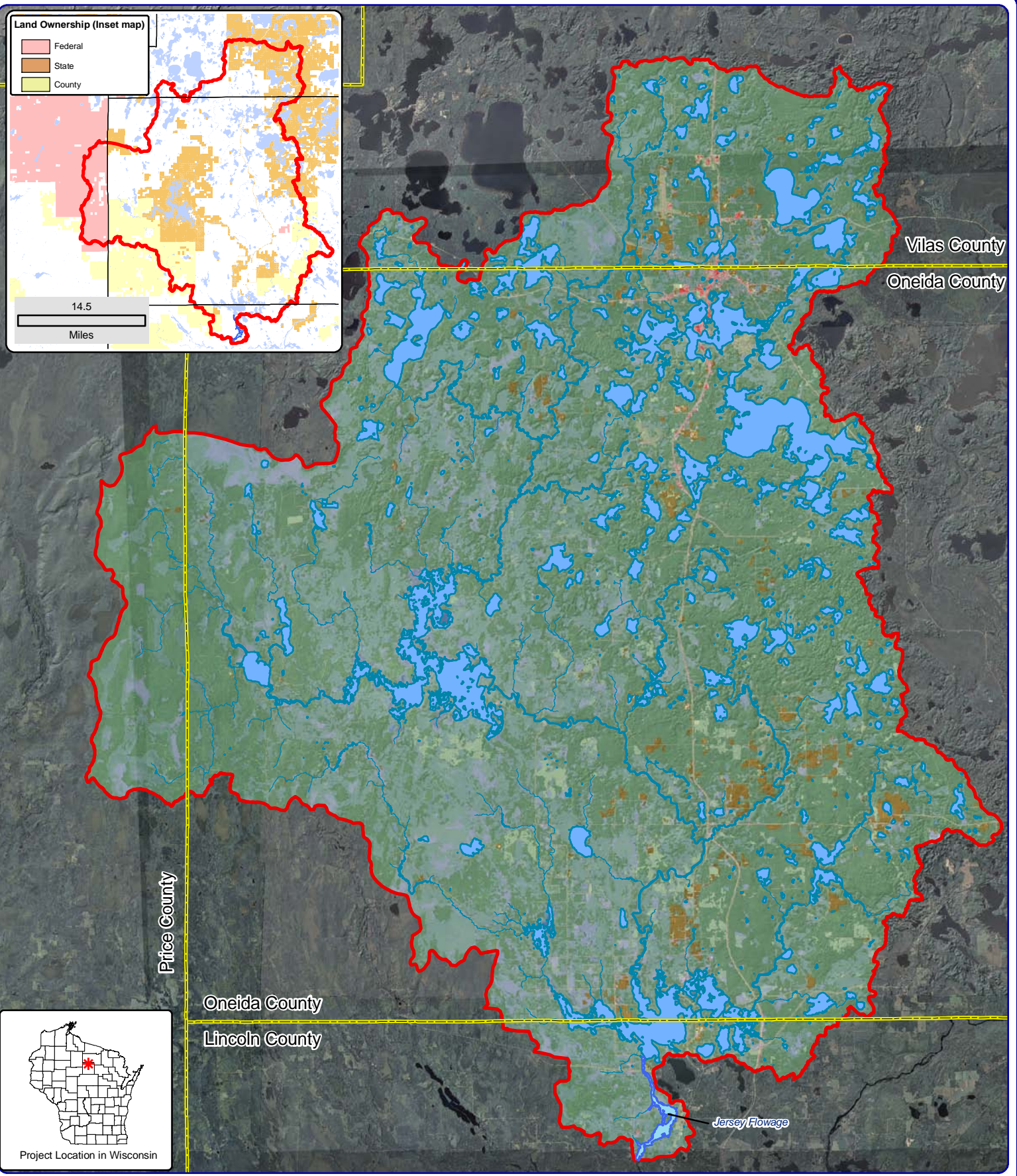
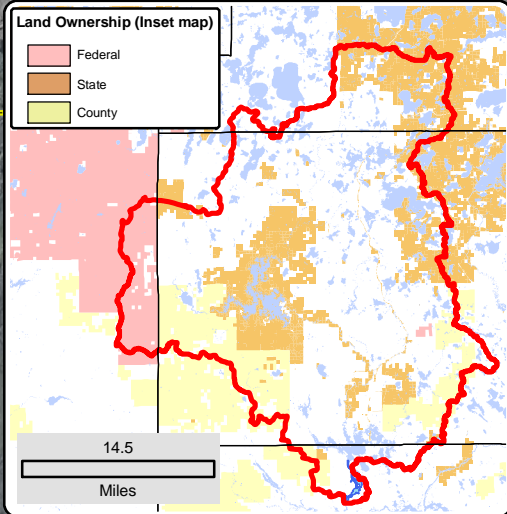
Sources:
 Roads and Hydro: WDNR
 Bathymetry: WDNR, 1971 - Digitized by Onterra
 Map Date: May 20, 2013
 Filename: Map1_JerseyFlowage_Location.mxd



Project Location in Wisconsin

- Legend**
-  Jersey Flowage ~433 acres
WDNR Definition
 -  Point-Intercept Survey Location
53-meter spacing, 615 total points
 -  Public Access
 -  Water Quality Sampling Location
 -  Dam Location

Map 1
 Jersey Flowage
 Lincoln County, Wisconsin
**Project Location &
 Lake Boundaries**

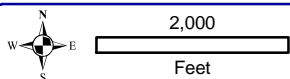
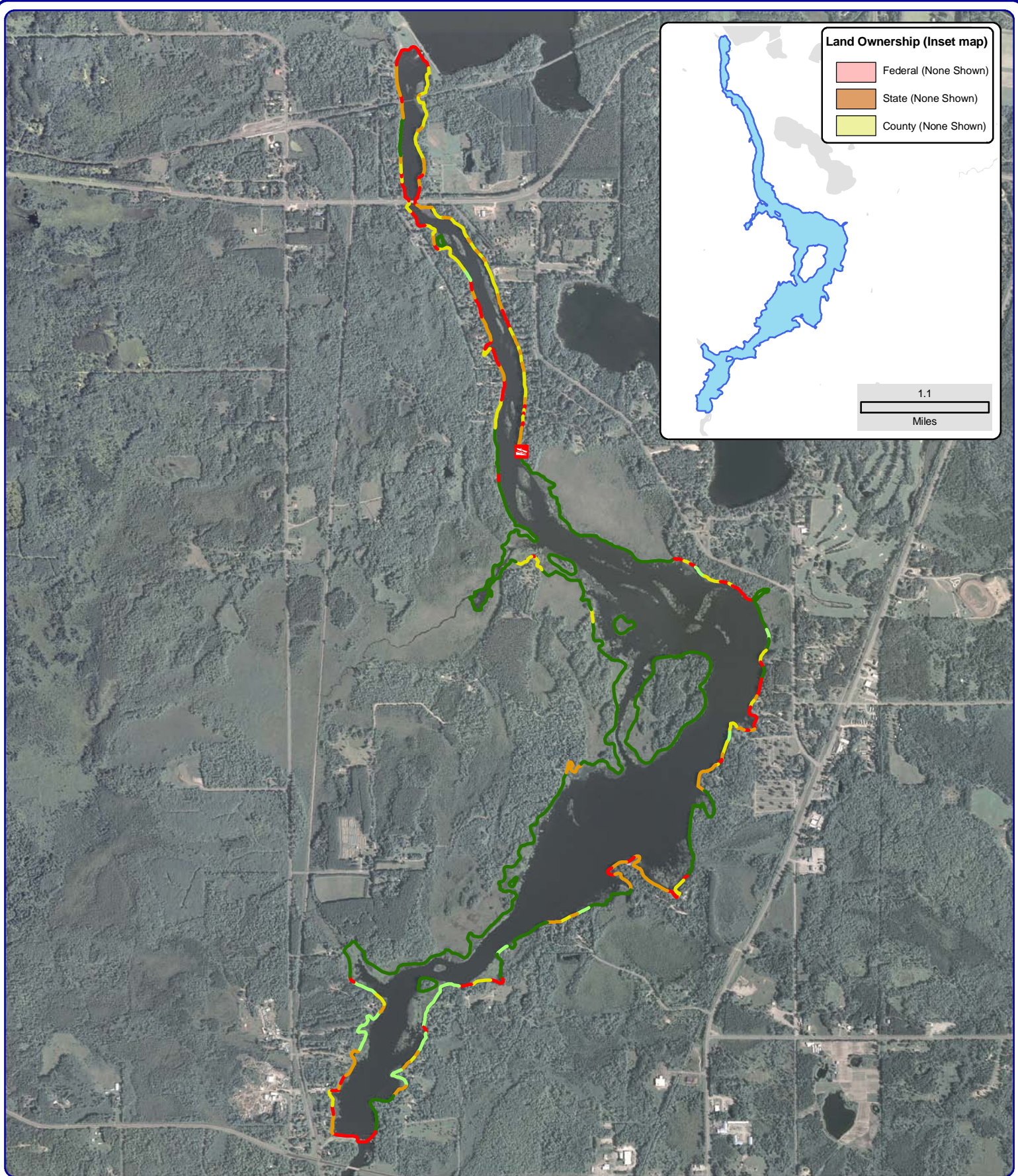


Onterra LLC
Lake Management Planning
815 Prosper Road
De Pere, WI 54115
920.338.8860
www.onterra-eco.com

Source:
Watershed: WDNR & Onterra
Landcover: NLCD 2006
Hydro: WDNR
Orthophotography: NAIP, 2010
Map Date: March 19, 2013
File Name: JerseyFlowage_watershed_map.mxd

- Legend**
- Forest
 - Forested Wetlands
 - Open Water
 - Pasture/Grass
 - Row Crops
 - Rural Open Space
 - Rural Residential
 - Urban - High Density
 - Urban - Medium Density
 - Wetland
 - Watershed Boundary

Map 2
Jersey Flowage
Lincoln County, Wisconsin
**Watershed and
Land Cover Types**



Onterra LLC
 Lake Management Planning
 815 Prosper Road
 De Pere, WI 54115
 920.338.8860
 www.onterra-eco.com

Sources:
 Orthophotography: NAIP, 2010
 Shoreland Survey: Onterra, 2012
 Map Date: May 20, 2013
 Filename: Map3_JerseyFlowage_ShorelandCondition.mxd

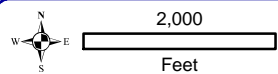
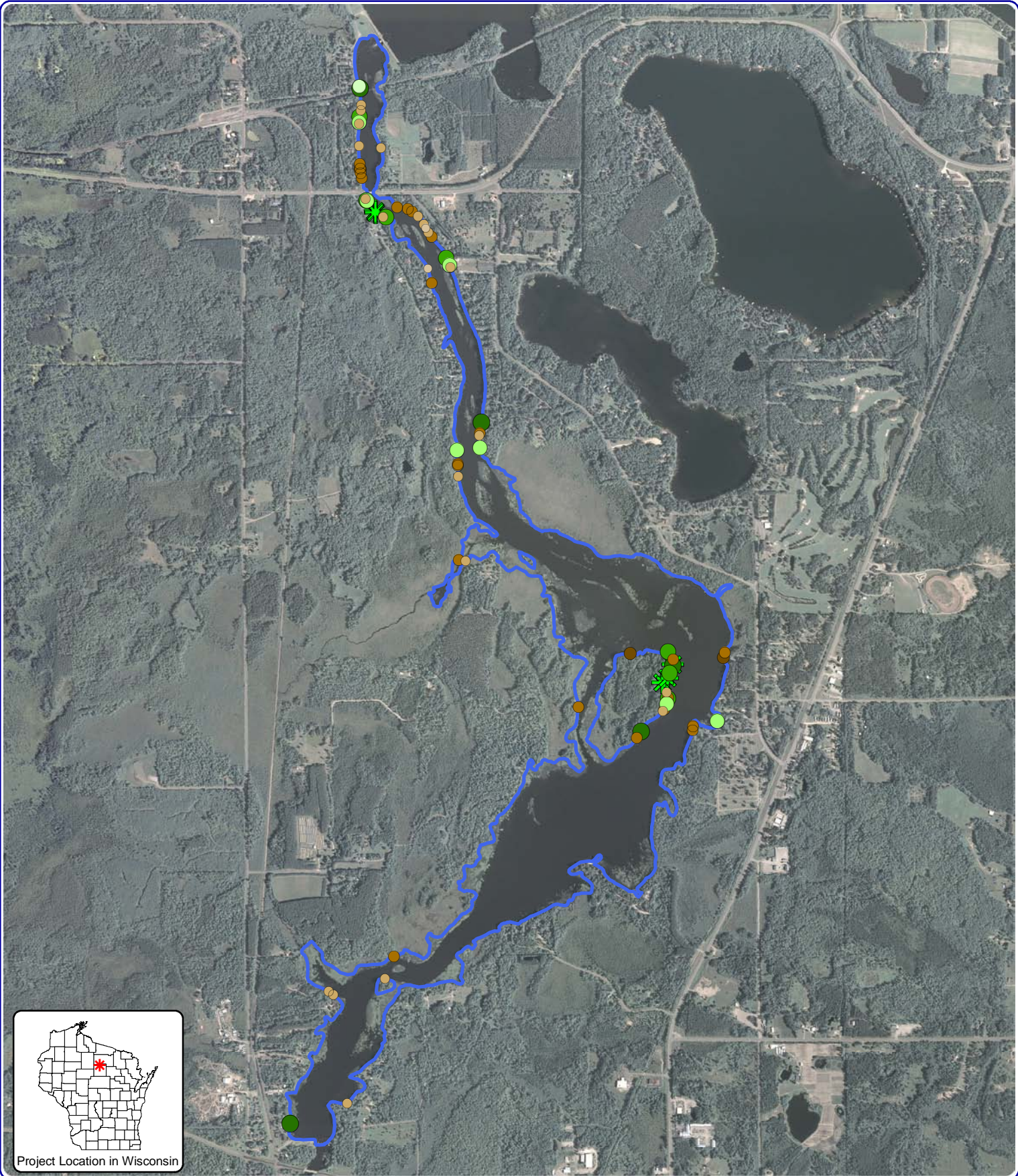


Project Location in Wisconsin

Legend

- Natural/Undeveloped
- Developed-Natural
- Developed-Semi-Natural
- Developed-Unnatural
- Urbanized

Map 3
Jersey Flowage
 Lincoln County, Wisconsin
Shoreland Condition



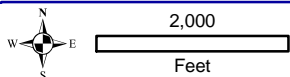
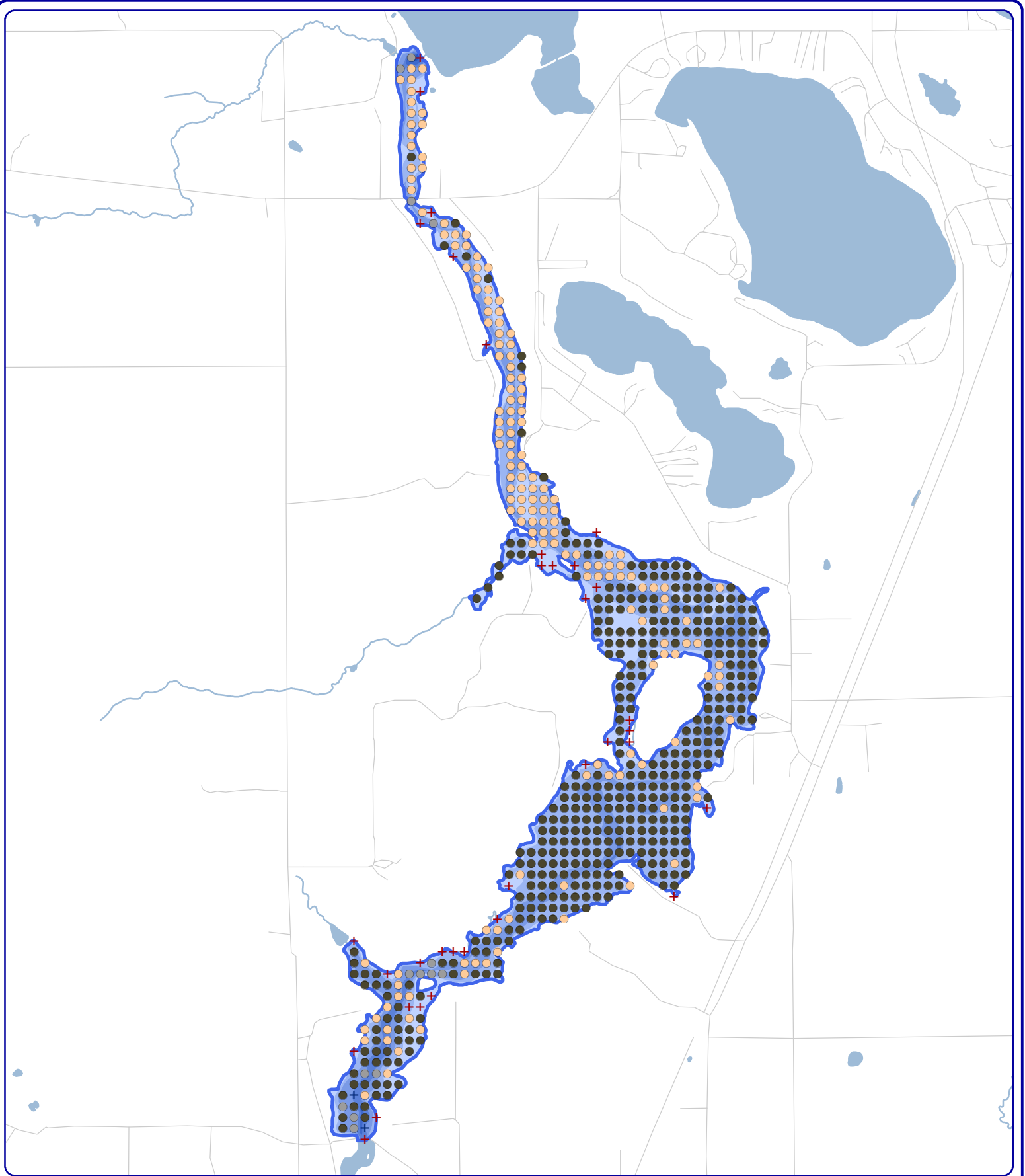
Onterra LLC
 Lake Management Planning
 815 Prosper Rd
 De Pere, WI 54115
 920.338.8860
 www.onterra-eco.com

Sources:
 Orthophotography: NAIP, 2010
 CWH Survey: Onterra, 2012
 Map date: January 8, 2013
 Filename: JerseyFlowage_CWH_2012.mxd

Legend

- 2-8 Inches, No Branches
- 2-8 Inches, Minimal Branches
- 2-8 Inches, Moderate Branches
- 2-8 Inches, Full Canopy
- >8 Inches, No Branches
- >8 Inches, Minimal Branches
- >8 Inches, Moderate Branches
- >8 Inches, Full Canopy
- ★ Cluster

Map 4
Jersey Flowage
 Lincoln County, Wisconsin
Coarse Woody
Habitat



Onterra LLC
 Lake Management Planning
 815 Prosper Road
 De Pere, WI 54115
 920.338.8860
 www.onterra-eco.com

Sources:
 Roads and Hydro: WDNR
 Bathymetry: WDNR, 1971 - Digitized by Onterra
 PI Survey: Onterra, 2012
 Map Date: May 20, 2013
 Filename: Map5_JerseyFlowage_SedimentPI.mxd



Project Location in Wisconsin

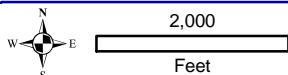
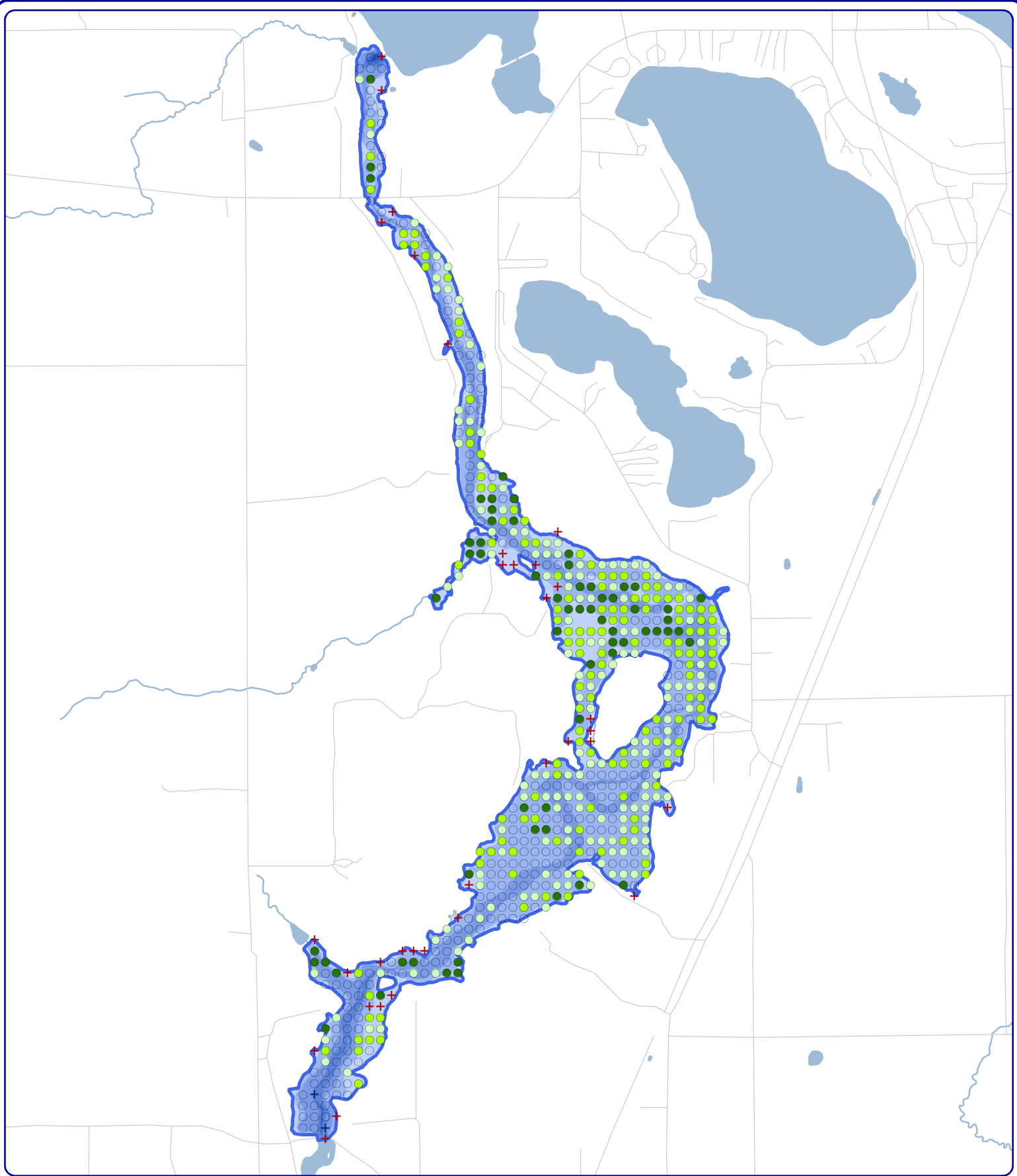
Legend

- Soft Sediments
- Rock
- Sand
- + Too Deep - No Data
- + Non-navigable

Map 5

Jersey Flowage
 Lincoln County, Wisconsin

**2012 PI Survey:
 Substrate Types**



Onterra LLC
 Lake Management Planning
 815 Prosper Road
 De Pere, WI 54115
 920.338.8860
 www.onterra-eco.com

Sources:
 Roads and Hydro: WDNR
 Bathymetry: WDNR, 1971 - Digitized by Onterra
 PI Survey: Onterra, 2012
 Map Date: May 20, 2013
 Filename: Map5_JerseyFlowage_SedimentPI.mxd



Project Location in Wisconsin

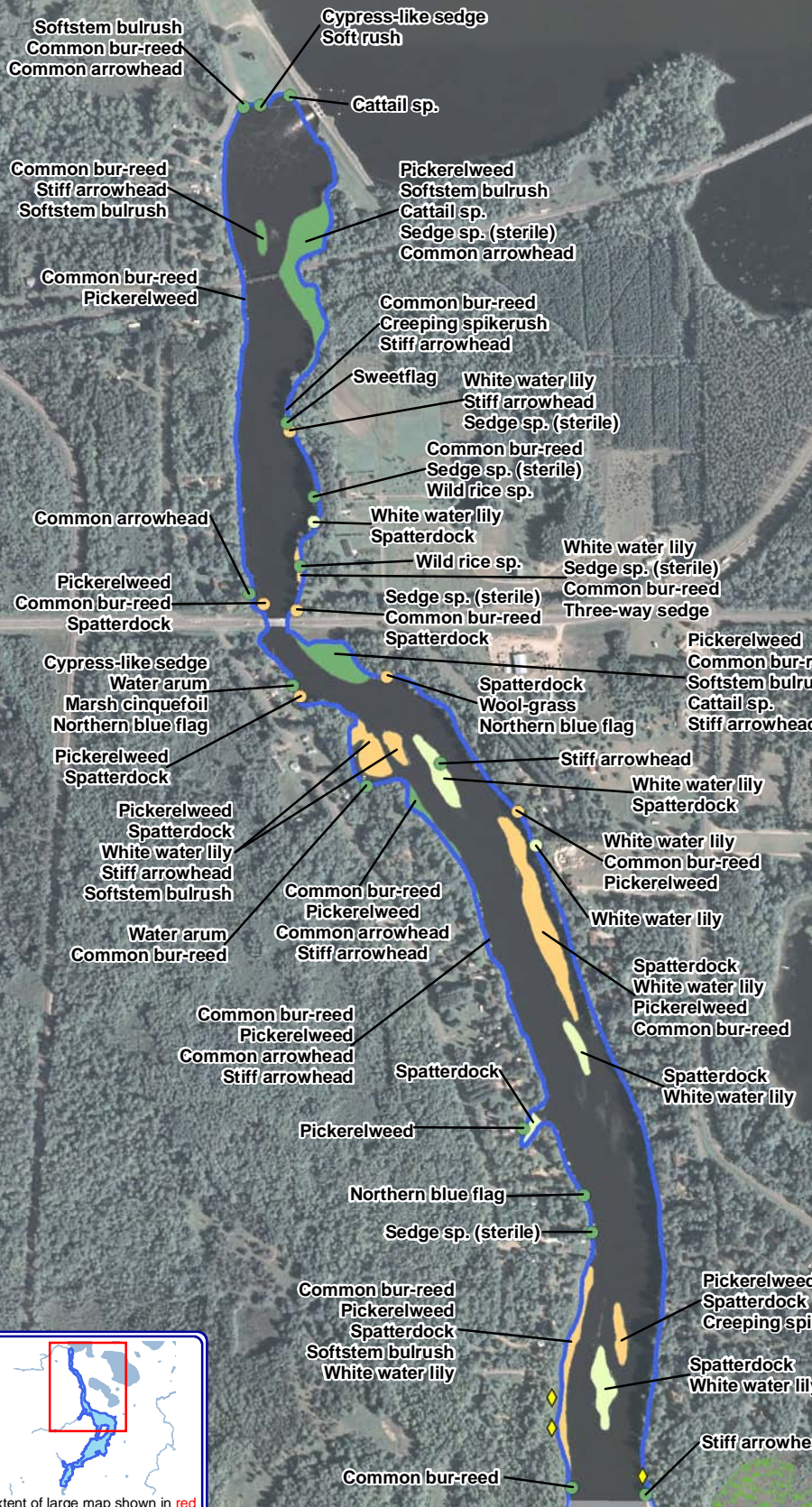
Legend

- Total Rake Fullness = 0
- Total Rake Fullness = 1
- Total Rake Fullness = 2
- Total Rake Fullness = 3
- + Too Deep - No Data
- + Non-navigable

Map 6

Jersey Flowage
 Lincoln County, Wisconsin

**2012 PI Survey:
 Total Rake Fullness**



Softstem bulrush
Common bur-reed
Common arrowhead

Cypress-like sedge
Soft rush

Cattail sp.

Common bur-reed
Stiff arrowhead
Softstem bulrush

Pickerelweed
Softstem bulrush
Cattail sp.
Sedge sp. (sterile)
Common arrowhead

Common bur-reed
Pickerelweed

Common bur-reed
Creeping spikerush
Stiff arrowhead

Sweetflag
White water lily
Stiff arrowhead
Sedge sp. (sterile)

Common bur-reed
Sedge sp. (sterile)
Wild rice sp.

Common arrowhead

White water lily
Spatterdock

White water lily
Sedge sp. (sterile)
Common bur-reed
Three-way sedge

Pickerelweed
Common bur-reed
Spatterdock

Sedge sp. (sterile)
Common bur-reed
Spatterdock

Pickerelweed
Common bur-reed
Softstem bulrush
Cattail sp.
Stiff arrowhead

Cypress-like sedge
Water arum
Marsh cinquefoil
Northern blue flag

Spatterdock
Wool-grass
Northern blue flag

Pickerelweed
Spatterdock

Stiff arrowhead

Pickerelweed
Spatterdock
White water lily
Stiff arrowhead
Softstem bulrush

White water lily
Spatterdock

Water arum
Common bur-reed

Common bur-reed
Pickerelweed
Common arrowhead
Stiff arrowhead

White water lily
Common bur-reed
Pickerelweed

Common bur-reed
Pickerelweed
Common arrowhead
Stiff arrowhead

Spatterdock
White water lily
Pickerelweed
Common bur-reed

Pickerelweed

Spatterdock
White water lily

Northern blue flag

Sedge sp. (sterile)

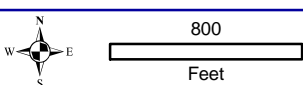
Common bur-reed
Pickerelweed
Spatterdock
Softstem bulrush
White water lily

Pickerelweed
Spatterdock
Creeping spikerush

Spatterdock
White water lily

Common bur-reed

Stiff arrowhead



Small Plant Communities

- Emergent
- Floating-leaf
- Mixed Floating-leaf & Emergent

Exotic Plant Communities

- ◆ Pale Yellow Iris
- ◆ Purple Loosestrife

Large Plant Communities

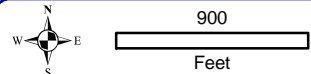
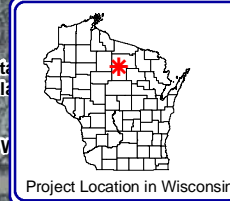
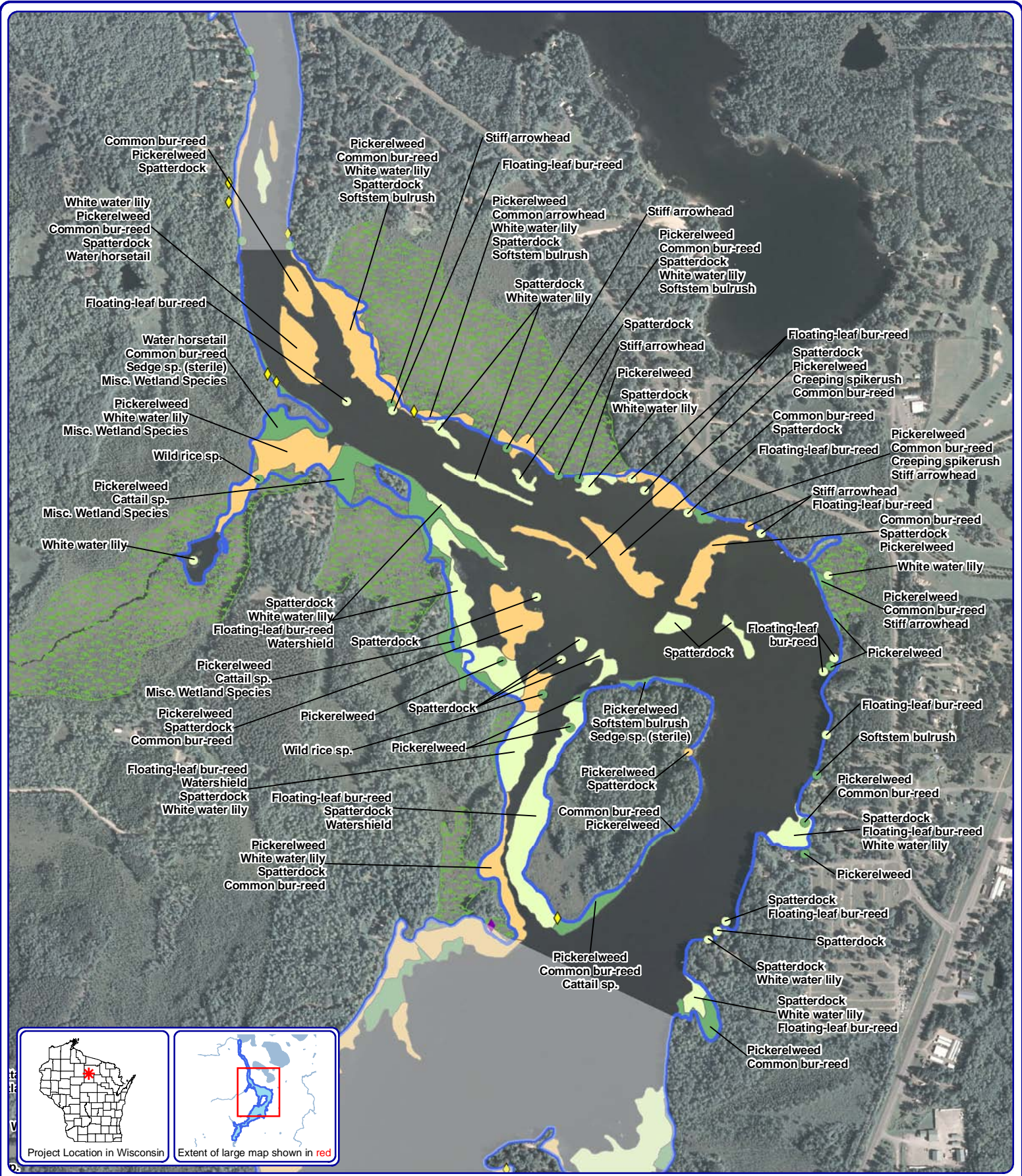
- Emergent
- Floating-leaf

- Mixed Floating-leaf & Emergent
- Adjacent Wetland Habitat

Onterra LLC
Lake Management Planning
815 Prosper Road
De Pere, WI 54115
920.338.8860
www.onterra-eco.com

Sources:
Hydro: WDNR
Aquatic Plants: Onterra, 2012
Orthophotography: NAIP, 2010
Map date: November 28, 2012
Filename: Map7_JerseyFlowage_Comm_North.mxd

Map 7
Jersey Flowage - North
Lincoln County, Wisconsin
**Floating-leaf & Emergent
Plant Communities**



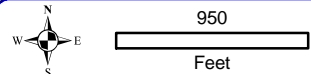
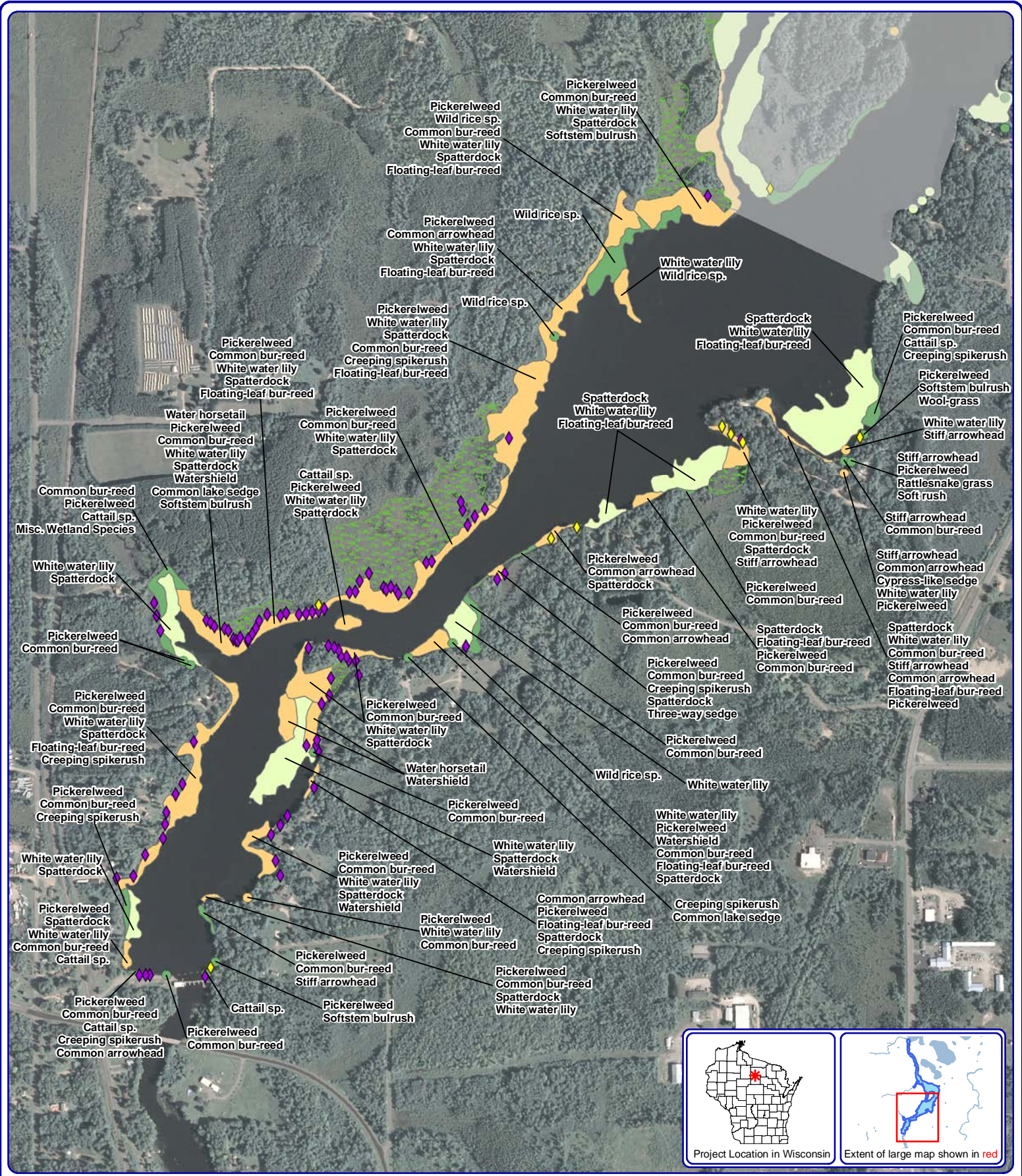
Onterra LLC
 Lake Management Planning
 815 Prosper Road
 De Pere, WI 54115
 920.338.8860
 www.onterra-eco.com

Sources:
 Hydro: WDNR
 Aquatic Plants: Onterra, 2012
 Orthophotography: NAIP, 2010
 Map date: November 28, 2012
 Filename: Map8_JerseyFlowage_Centr.mxd

- Small Plant Communities**
- Emergent
 - Floating-leaf
 - Mixed Floating-leaf & Emergent
 - Adjacent Wetland Habitat
- Exotic Plant Communities**
- ◆ Pale Yellow Iris
 - ◆ Purple Loosestrife

- Large Plant Communities**
- Emergent
 - Floating-leaf
 - Mixed Floating-leaf & Emergent
 - Adjacent Wetland Habitat

Map 8
Jersey Flowage - Central
 Lincoln County, Wisconsin
Floating-leaf & Emergent
Plant Communities



Onterra LLC
 Lake Management Planning
 815 Prosper Road
 De Pere, WI 54115
 920.338.8860
 www.onterra-eco.com

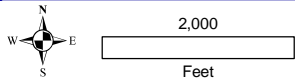
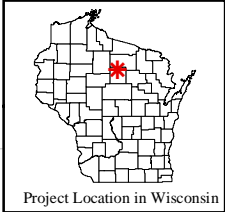
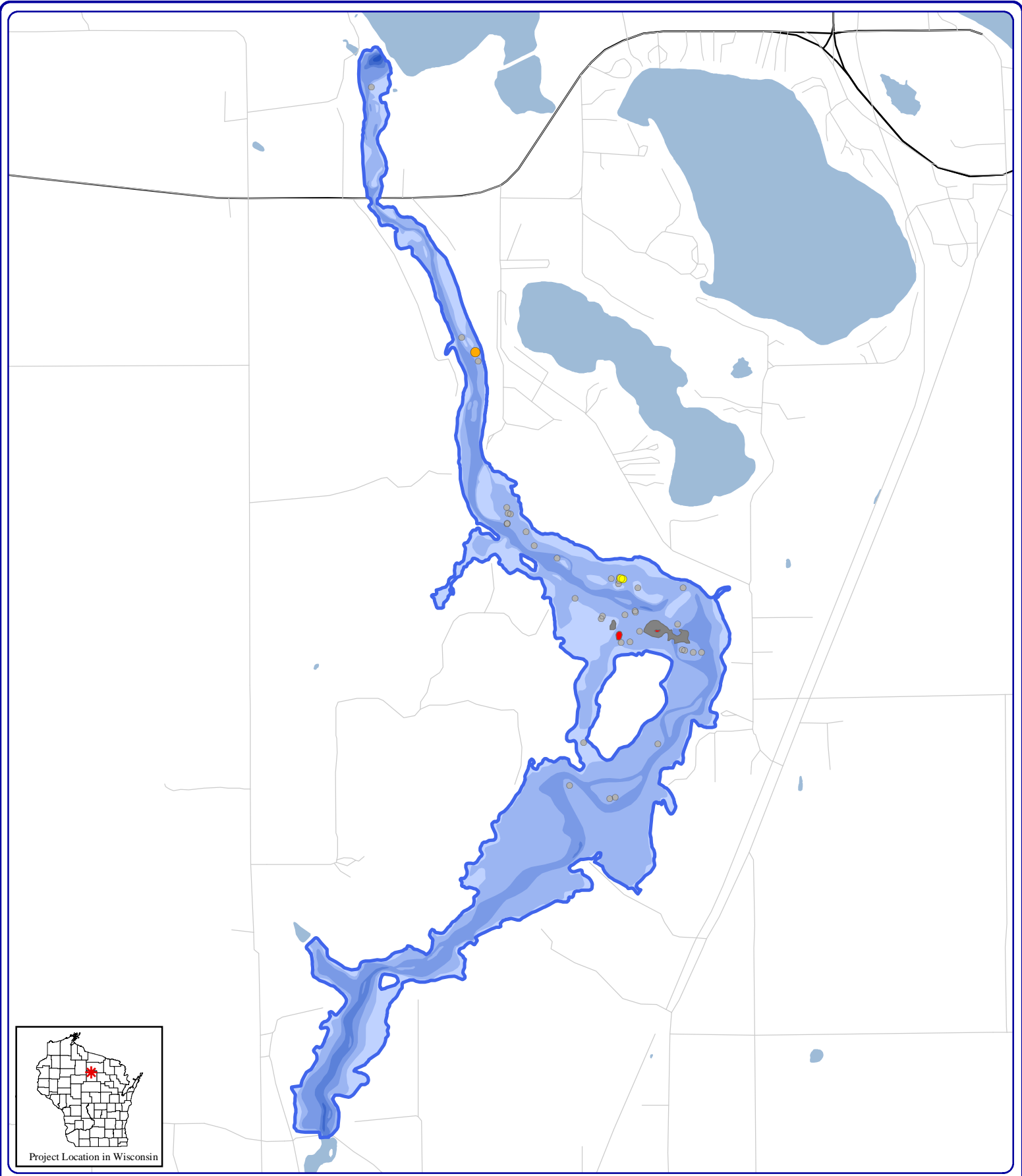
Sources:
 Hydro: WDNR
 Aquatic Plants: Onterra, 2012
 Orthophotography: NAIP, 2010
 Map date: November 28, 2012
 Filename: Map9_JerseyFlowage_Comm_South.mxd

- Small Plant Communities**
- Emergent
 - Floating-leaf
 - Mixed Floating-leaf & Emergent
 - Exotic Plant Communities
 - ◆ Pale Yellow Iris
 - ◆ Purple Loosestrife

- Large Plant Communities**
- Emergent
 - Floating-leaf

- Mixed Floating-leaf & Emergent
- Adjacent Wetland Habitat

Map 9
Jersey Flowage - South
 Lincoln County, Wisconsin
Floating-leaf & Emergent Plant Communities



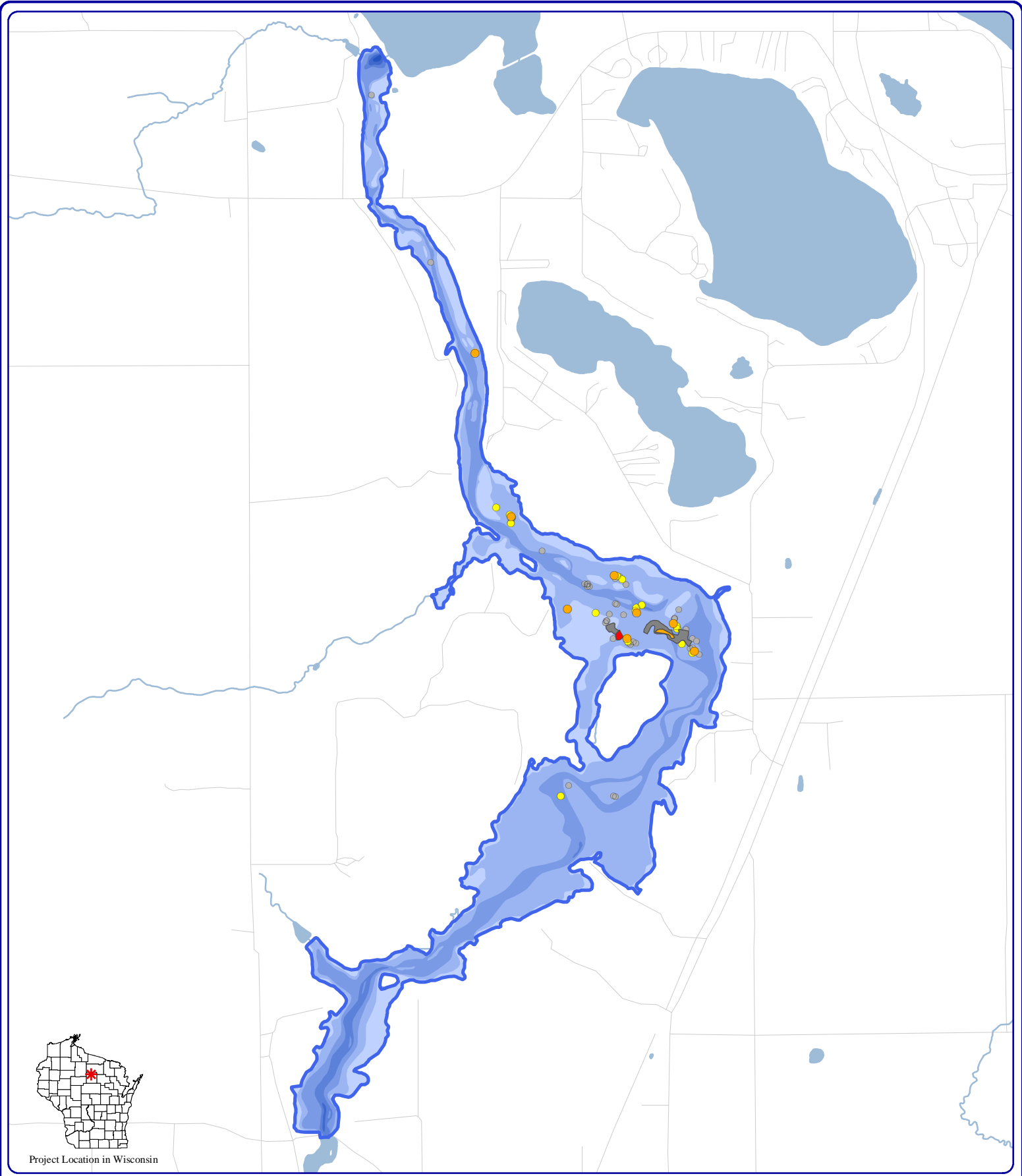
Onterra LLC
 Lake Management Planning
 135 South Broadway Suite C
 De Pere, WI 54115
 920.338.8860
 www.onterra-eco.com

Sources:
 Roads & Hydro: WDNR
 Aquatic Plants: Onterra 2011
Map date: December 6, 2011
 File Name: Map13_JerseyFlowage_CLP_PB_June11.mxd

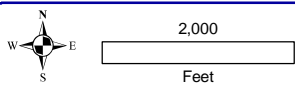
CLP Survey Results (June 2011)

- | | |
|------------------|--------------------------|
| Highly Scattered | Single or Few Plants |
| Scattered | Many or Clumps of Plants |
| Dominant | Small Plant Colony |
| Highly Dominant | |
| Surface Matting | |

Map 10
Jersey Flowage
 Lincoln County, Wisconsin
2011 Curly-leaf
pondweed Locations



Project Location in Wisconsin



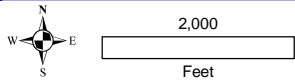
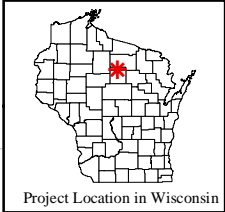
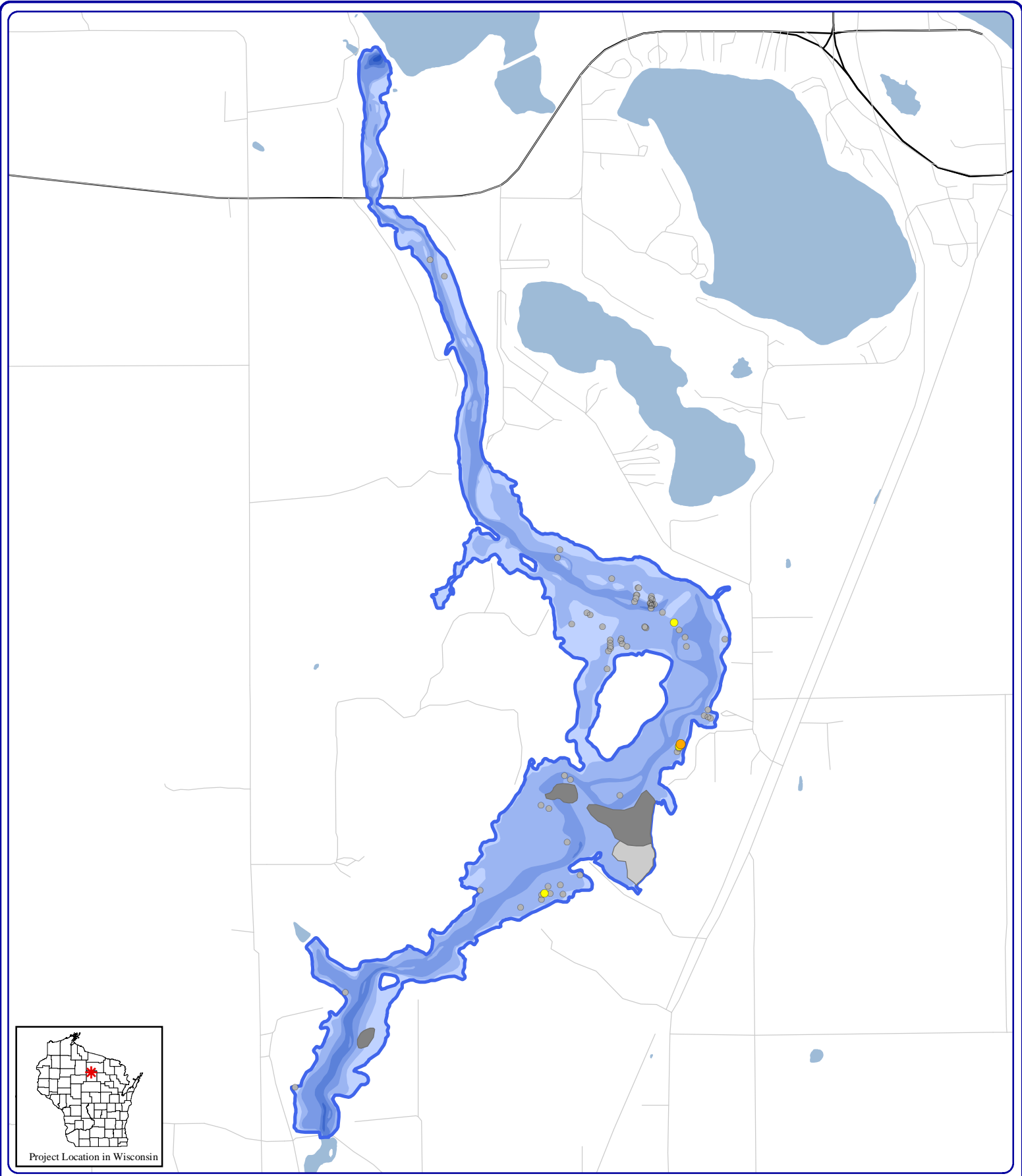
Onterra LLC
 Lake Management Planning
 815 Prosper Rd.
 De Pere, WI 54115
 920.338.8860
 www.onterra-eco.com

Sources:
 Roads & Hydro: WDNR
 Aquatic Plants: Onterra 2012
Map date: June 18, 2012
 File Name: Map14_JerseyFlowage_CLP_PB_June12.mxd

CLP Survey Results (June 2012)

- Highly Scattered
- Scattered
- Dominant
- Highly Dominant
- Surface Matting
- Single or Few Plants
- Many or Clumps of Plants
- Small Plant Colony

Map 11
Jersey Flowage
 Lincoln County, Wisconsin
2012 Curly-leaf
pondweed Locations



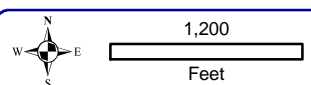
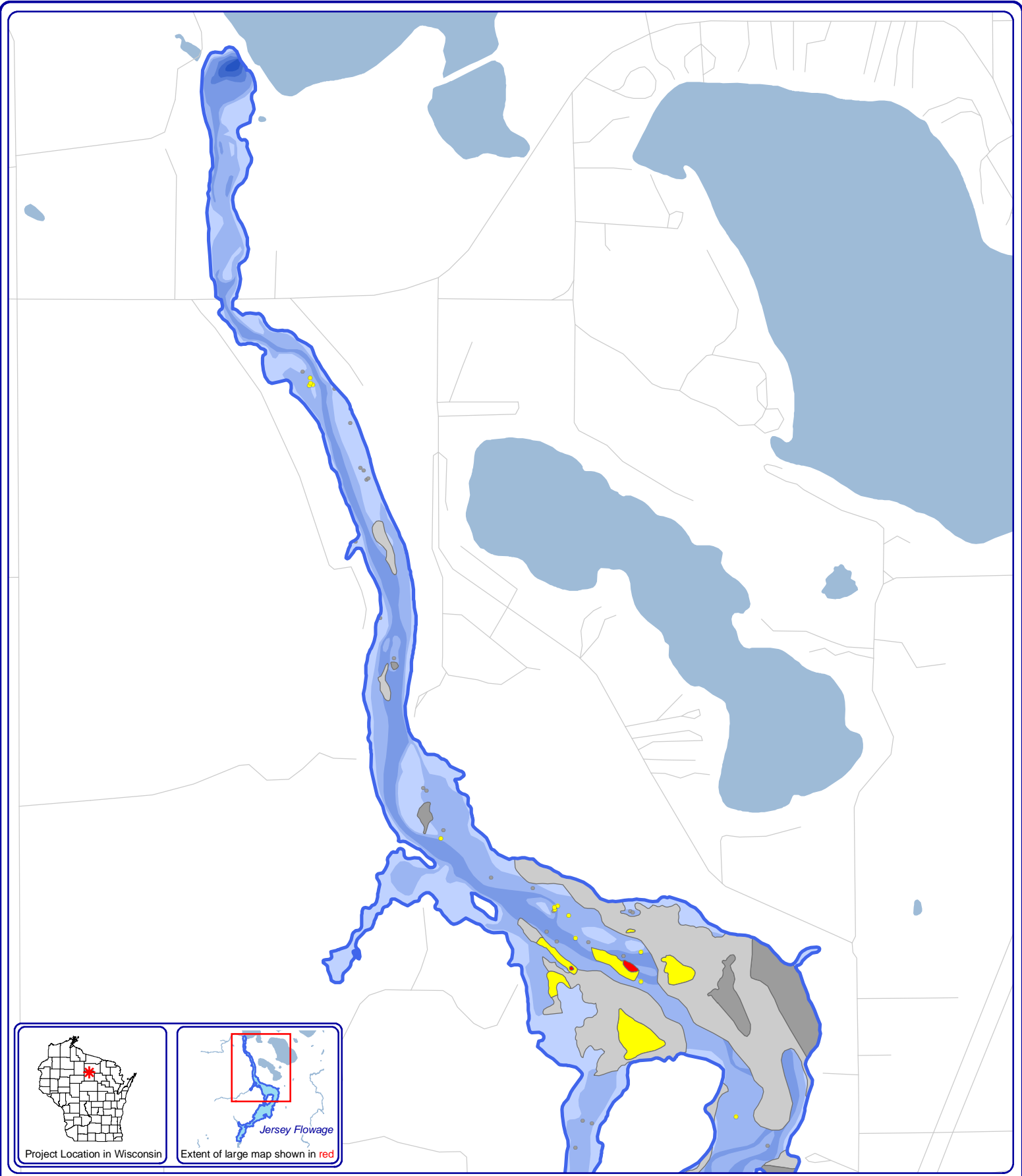
Onterra LLC
 Lake Management Planning
 135 South Broadway Suite C
 De Pere, WI 54115
 920.338.8860
 www.onterra-eco.com

Sources:
 Roads & Hydro: WDNR
 Aquatic Plants: Onterra 2011
Map date: December 6, 2011
 File Name: Map10_JerseyFlowage_EWM_PB_June11.mxd

EWM Survey Results (June 2011)

- | | |
|------------------|--------------------------|
| Highly Scattered | Single or Few Plants |
| Scattered | Many or Clumps of Plants |
| Dominant | Small Plant Colony |
| Highly Dominant | |
| Surface Matting | |

Map 12
Jersey Flowage
 Lincoln County, Wisconsin
**2011 Eurasian water
 milfoil Locations**



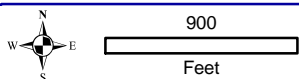
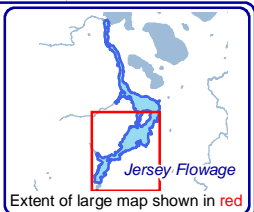
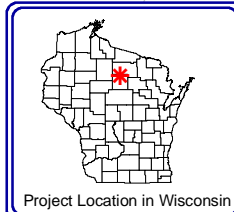
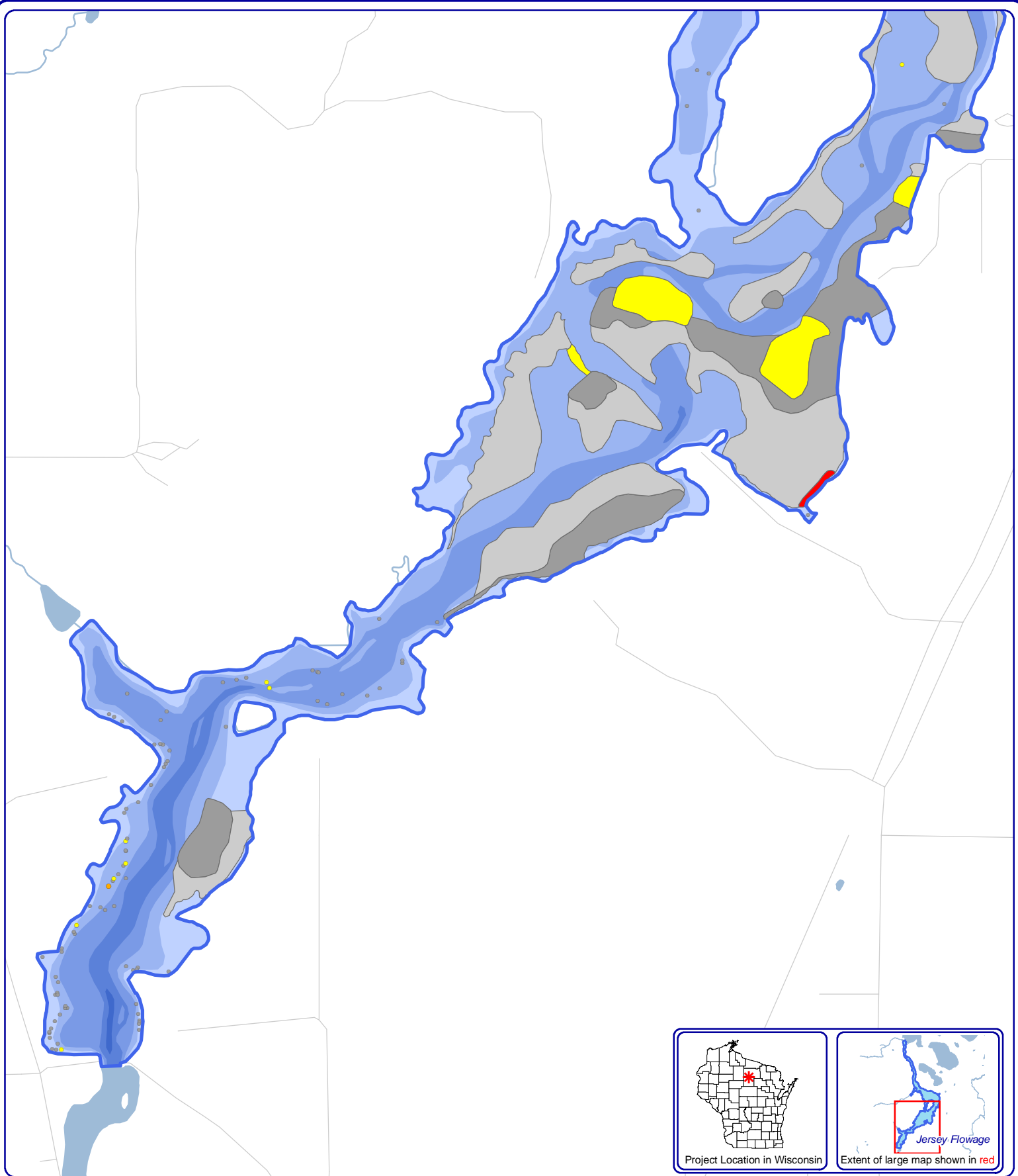
Onterra LLC
 Lake Management Planning
 815 Prosper Road
 De Pere, WI 54115
 920.338.8860
 www.onterra-eco.com

Sources:
 Data: Roads and Hydro: WDNR
 Aquatic Plant Survey: Onterra, 2012
 Map Date: September 21, 2012
 Filename: Map10_JerseyFlowage_EWMPB_Sep12_Nothing.mxd

Eurasian water milfoil (September 2012)

- Highly Scattered
- Scattered
- Dominant
- Highly Dominant (None)
- Surface Matting
- Single or Few Plants
- Clumps of Plants
- Small Plant Colony

Map 13
Jersey Flowage - North
 Lincoln County, Wisconsin
**2012 Eurasian water
 milfoil Locations**



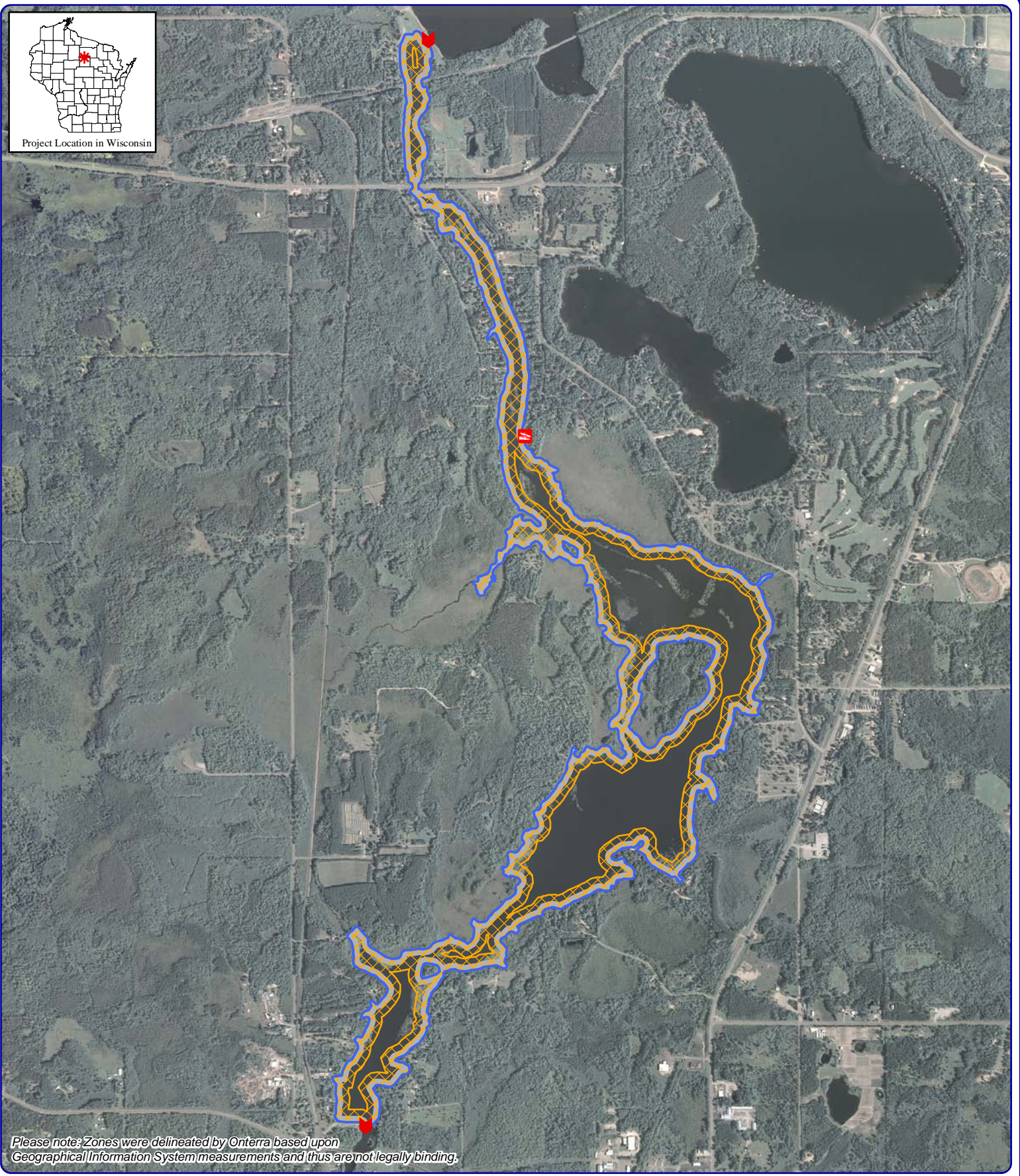
Onterra LLC
 Lake Management Planning
 815 Prosper Road
 De Pere, WI 54115
 920.338.8860
 www.onterra-eco.com

Sources:
 Data: Roads and Hydro: WDNR
 Aquatic Plant Survey: Onterra, 2012
 Map Date: September 21, 2012
 Filename: Map11_JerseyFlowage_EWMPB_Sept12_South.mxd

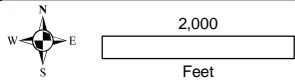
Eurasian water milfoil (September 2012)

- Highly Scattered
- Scattered
- Dominant
- Highly Dominant (None)
- Surface Matting
- Single or Few Plants
- Clumps of Plants
- Small Plant Colony

Map 14
Jersey Flowage - South
 Lincoln County, Wisconsin
2012 Eurasian water milfoil Locations








Please note: Zones were delineated by Onterra based upon Geographical Information System measurements and thus are not legally binding.



Onterra LLC
 Lake Management Planning
 815 Prosper Road
 De Pere, WI 54115
 920.338.8860
 www.onterra-eco.com

Sources:
 Roads & Hydro: WDNR
 Aquatic Plants: Onterra GIS
 Map date: August 27, 2013
 File Name: Draft_JerseyFlowage_Act31.mxd

Legend

-  Jersey Flowage
WDNR Lake Outline
-  Public Access Location
-  Dam Location
-  Motorized Boat
Slow-No-Wake Area (100 ft)*
-  Personal Watercraft
Slow-No-Wake Area (200 ft)*

* 100 and 200 foot measurements from shoreline at ordinary high water mark (OHWM).

Map 15
Jersey Flowage
 Lincoln County, Wisconsin
Wisconsin Act 31
Slow-No-Wake Zones