
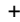




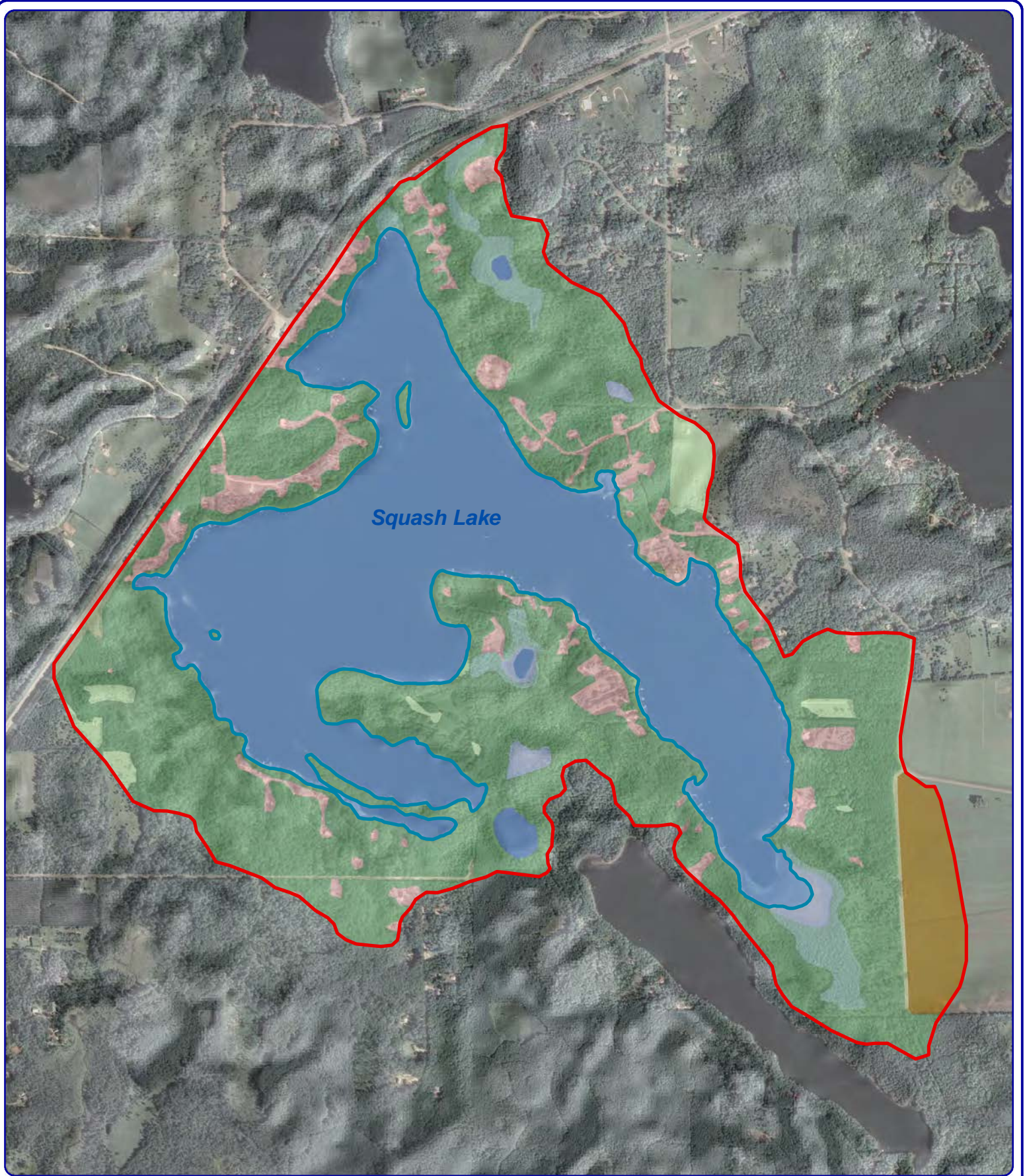
**Onterra LLC**  
 Lake Management Planning  
 815 Prosper Road  
 De Pere, WI 54115  
 920.338.8860  
 www.onterra-eco.com

Sources:  
 Roads and Hydro: WDNR  
 Bathymetry: WDNR 1975; digitized by Onterra  
 Map Date: August 21, 2013  
 Filename: Map1\_Squash\_Location.mxd

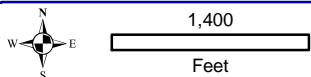
**Legend**

-  Squash Lake ~396 acres  
WDNR Definition
-  Point-Intercept Survey Location  
33-meter spacing, 1,478 total points
-  Water Quality Sampling Location
-  Public Access

Map 1  
 Squash Lake  
 Oneida County, Wisconsin  
**Project Location &  
 Lake Boundaries**



Squash Lake



**Onterra LLC**  
 Lake Management Planning  
 815 Prosper Road  
 De Pere, WI 54115  
 920.338.8860  
 www.onterra-eco.com

Sources:  
 Land Cover: NLCD, 2006  
 Orthophotography: NAIP, 2010  
 Hydro: WDNR  
 Map Date: August 21, 2013  
 Filename: Map2\_Squash\_WS.mxd



Project Location in Wisconsin

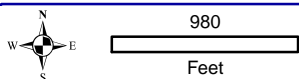
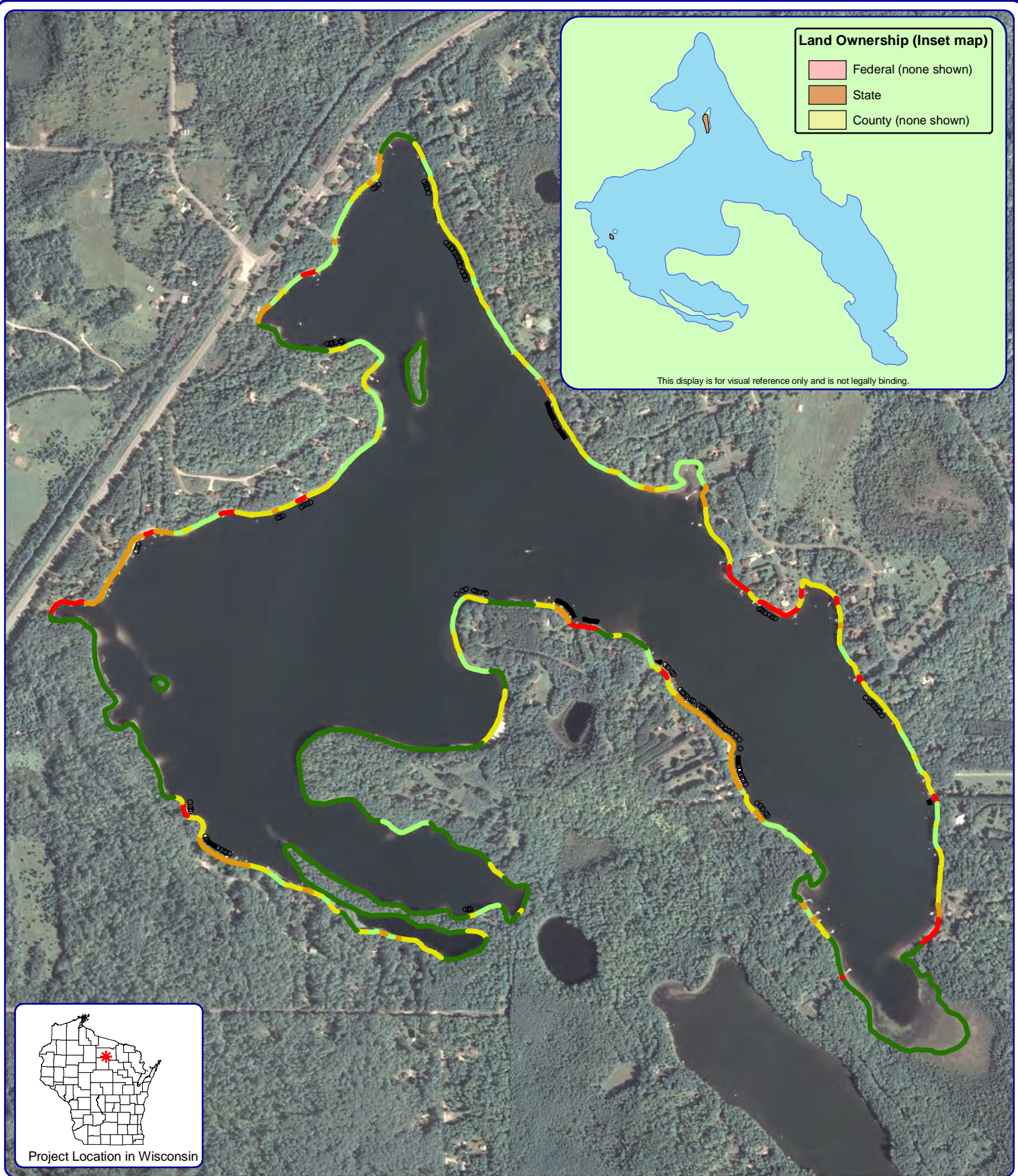
**Legend**

Squash Lake Watershed Boundary

**Land Cover Types**

- Forest
- Forested Wetlands
- Wetlands
- Open Water
- Rural Open Space
- Pasture/Grass
- Row Crops
- Rural Residential

**Map 2**  
**Squash Lake**  
 Oneida County, Wisconsin  
**Watershed &**  
**Land Cover Types**



**Onterra LLC**  
 Lake Management Planning  
 815 Prosper Road  
 De Pere, WI 54115  
 920.338.8860  
 www.onterra-eco.com

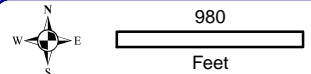
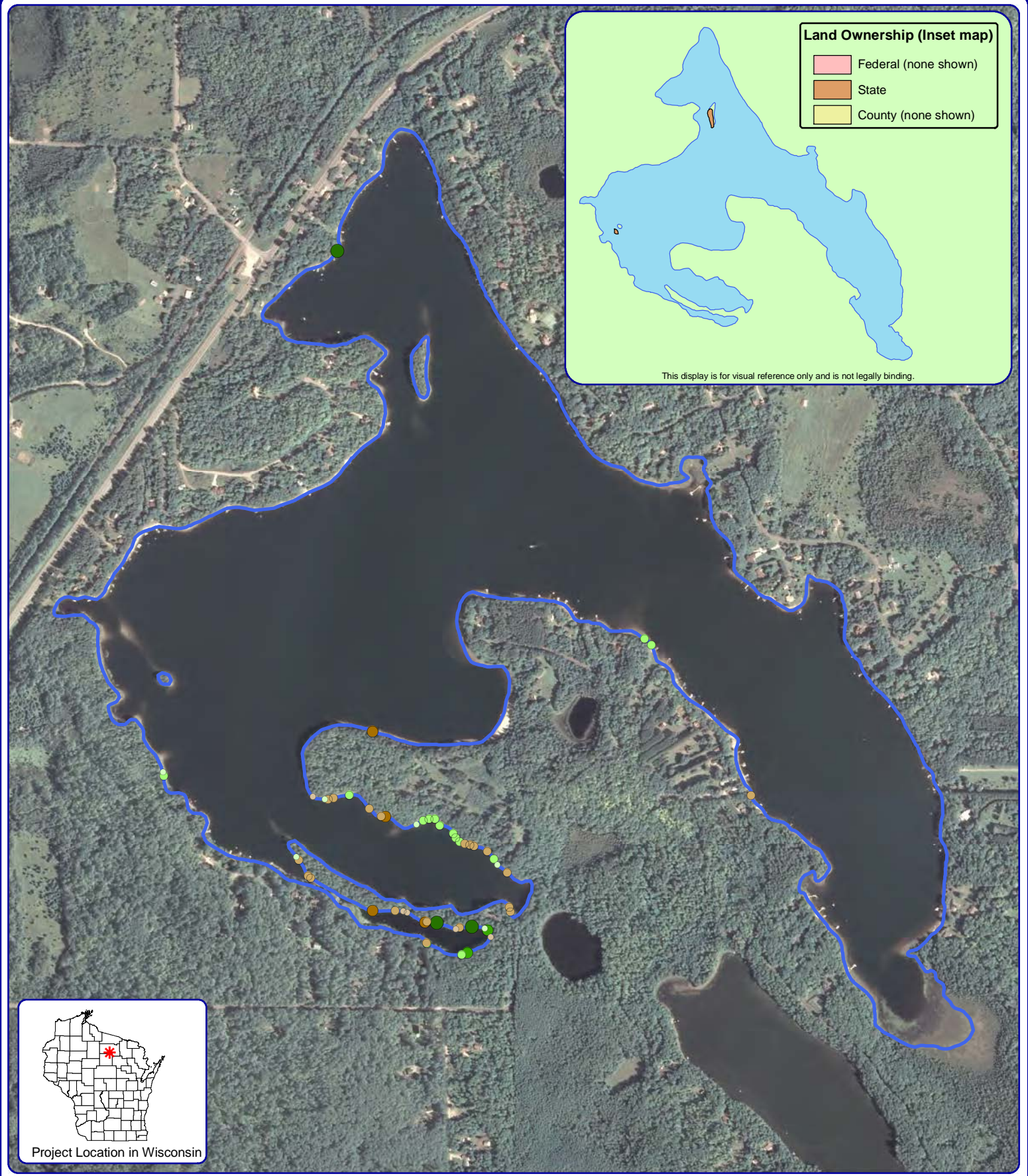
Sources:  
 Land Cover: NLCD, 2006  
 Orthophotography: NAIP, 2010  
 Hydro: WDNR  
 Shoreline Survey: Onterra, 2012  
 Map Date: August 21, 2013  
 Filename: Map3\_Squash\_SC.mxd

**Legend**

- Natural/Undeveloped
- Developed-Natural
- Developed-Semi-Natural
- Developed-Unnatural
- Urbanized

- Seawall
- Masonary/Wood
- Rip-Rap

Map 3  
 Squash Lake  
 Oneida County, Wisconsin  
**Shoreline Condition**

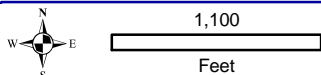
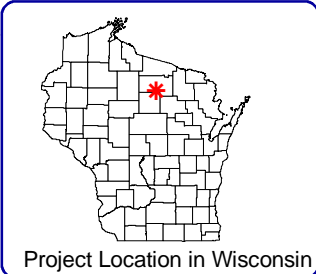
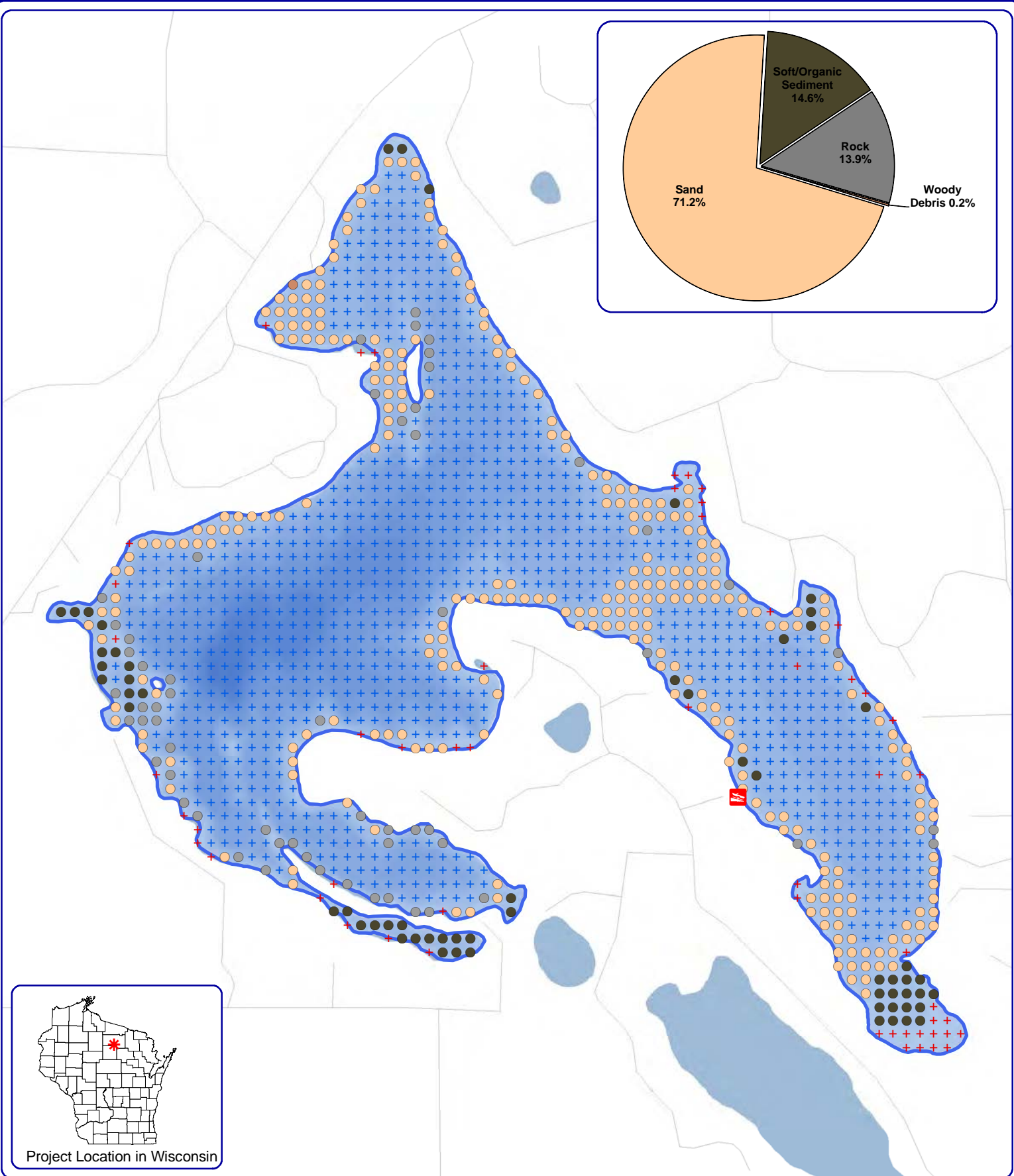
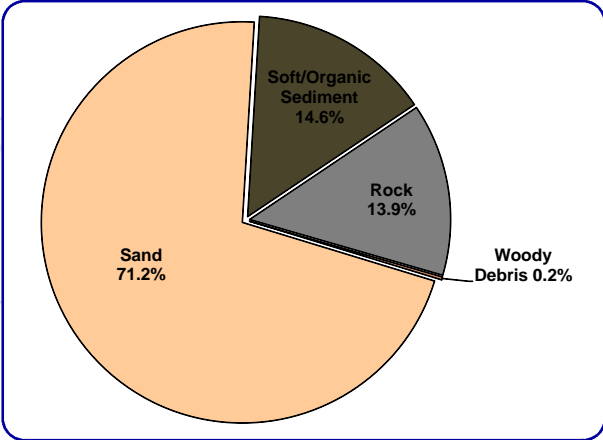


**Onterra LLC**  
 Lake Management Planning  
 815 Prosper Road  
 De Pere, WI 54115  
 920.338.8860  
 www.onterra-eco.com

Sources:  
 Land Cover: NLCD, 2006  
 Orthophotography: NAIP, 2010  
 Hydro: WDNR  
 CWH Survey: Onterra, 2012  
 Map Date: August 21, 2013  
 Filename: Map3\_Squash\_CWH.mxd

- Legend**
- 2-8 Inches, No Branches
  - 2-8 Inches, Minimal Branches
  - 2-8 Inches, Moderate Branches
  - 2-8 Inches, Full Canopy
  - >8 Inches, No Branches
  - >8 Inches, Minimal Branches
  - >8 Inches, Moderate Branches
  - >8 Inches, Full Canopy
  - ✱ Cluster

**Map 4**  
**Squash Lake**  
 Oneida County, Wisconsin  
**Course Woody**  
**Habitat**



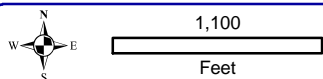
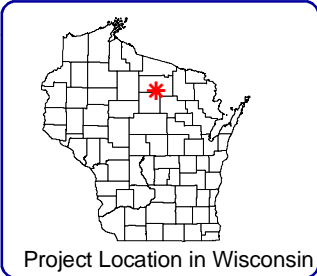
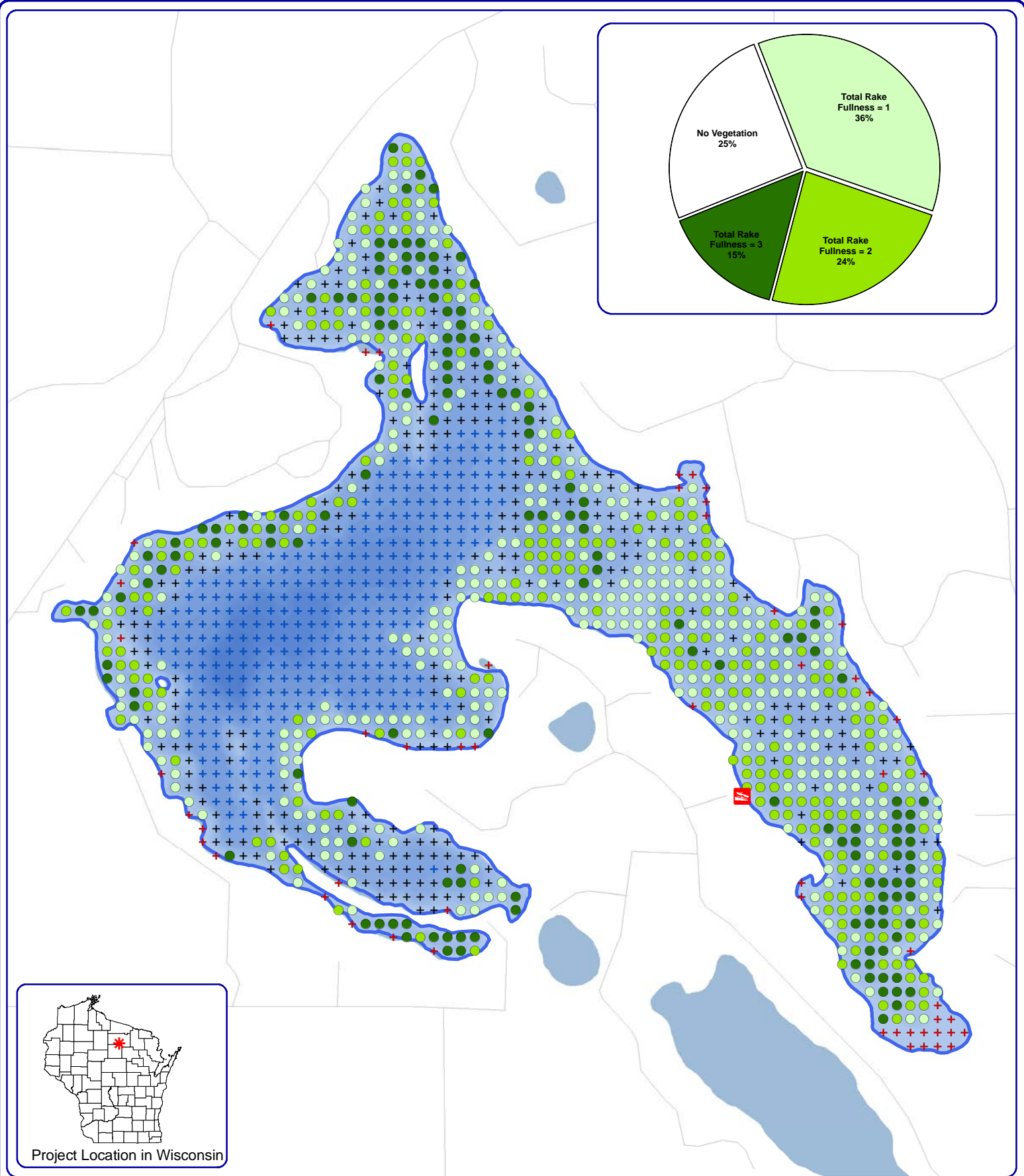
**Onterra LLC**  
 Lake Management Planning  
 815 Prosper Road  
 De Pere, WI 54115  
 920.338.8860  
 www.onterra-eco.com

Sources:  
 Roads and Hydro: WDNR  
 Bathymetry: WDNR 1975; digitized by Onterra  
 Map Date: August 21, 2013  
 Filename: Map5\_Squash\_SedimentPI.mxd

**Legend**  
 2012 Substrate Types

- Soft/Organic Sediments
- Rock
- Sand
- Woody Debris
- + Too Deep - No Data
- + Non-navigable/Temporary Obstacle

**Map 5**  
 Squash Lake  
 Oneida County, Wisconsin  
**2012 PI Survey:**  
**Substrate Types**



**Onterra LLC**  
 Lake Management Planning  
 815 Prosper Road  
 De Pere, WI 54115  
 920.338.8860  
 www.onterra-eco.com

Sources:  
 Roads and Hydro: WDNR  
 Bathymetry: WDNR 1975; digitized by Onterra  
 PI Survey: Onterra, 2012  
 Map Date: August 21, 2013  
 Filename: Map6\_Squash\_2012TRFPI.mxd

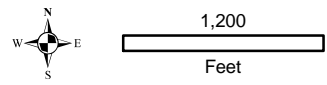
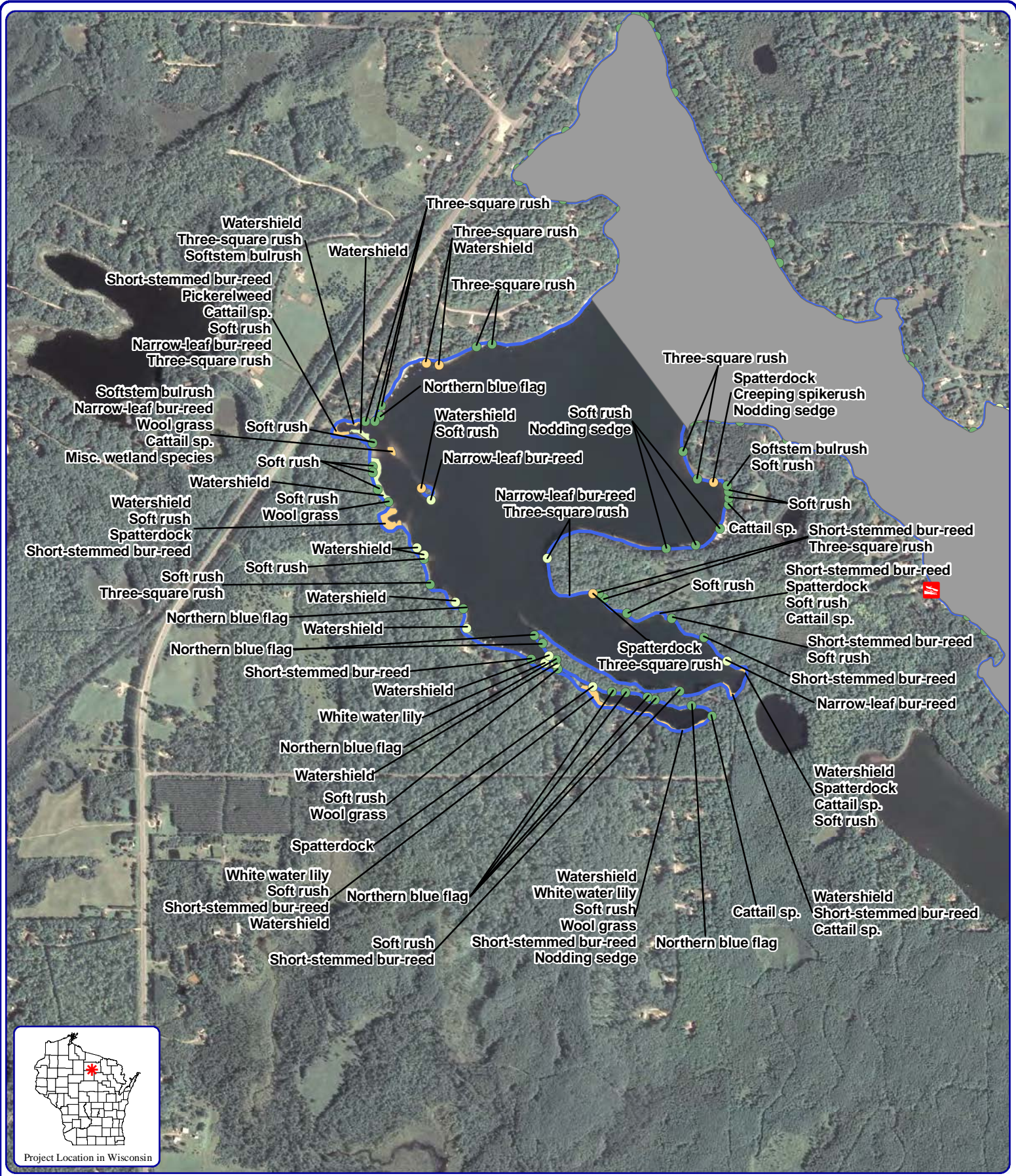
**Legend**

**2012 Total Rake Fullness**

- + No Vegetation
- Total Rake Fullness = 1
- Total Rake Fullness = 2
- Total Rake Fullness = 3
- + Too Deep
- + Non-navigable/Temporary Obstacle

**Map 6**  
**Squash Lake**  
 Oneida County, Wisconsin  
**2012 PI Survey:**  
**Aquatic Vegetation**  
**Distribution**





**Onterra LLC**  
 Lake Management Planning  
 815 Prosper Road  
 De Pere, WI 54115  
 920.338.8860  
 www.onterra-eco.com

Sources:  
 Orthophotography: NAIP, 2010  
 Aquatic Plants: Onterra, 2012  
 Map Date: August 21, 2013  
 Filename: Map8\_Squash\_Comm\_West.mxd

**Legend**

**Small Plant Communities**

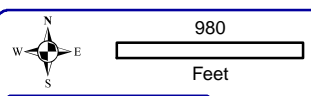
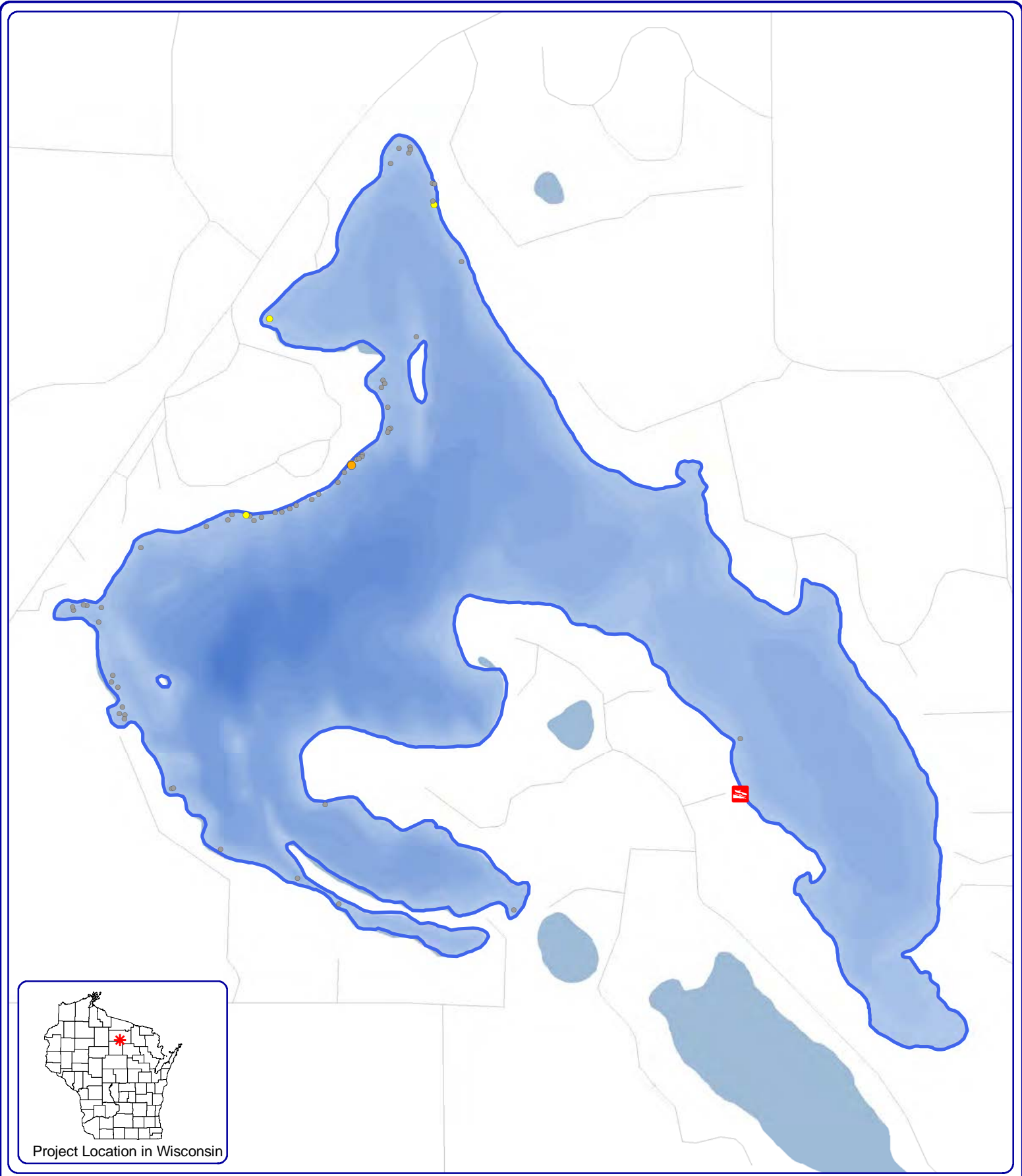
- Emergent
- Floating-leaf
- Mixed Emergent & Floating-leaf

**Large Plant Communities**

- ◊ Emergent
- ◊ Floating-leaf
- ◊ Mixed Emergent & Floating-leaf

**Map 8**  
**Squash Lake - West**  
 Oneida County, Wisconsin  
**Emergent & Floating-leaf Aquatic Plant Communities**



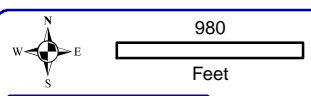
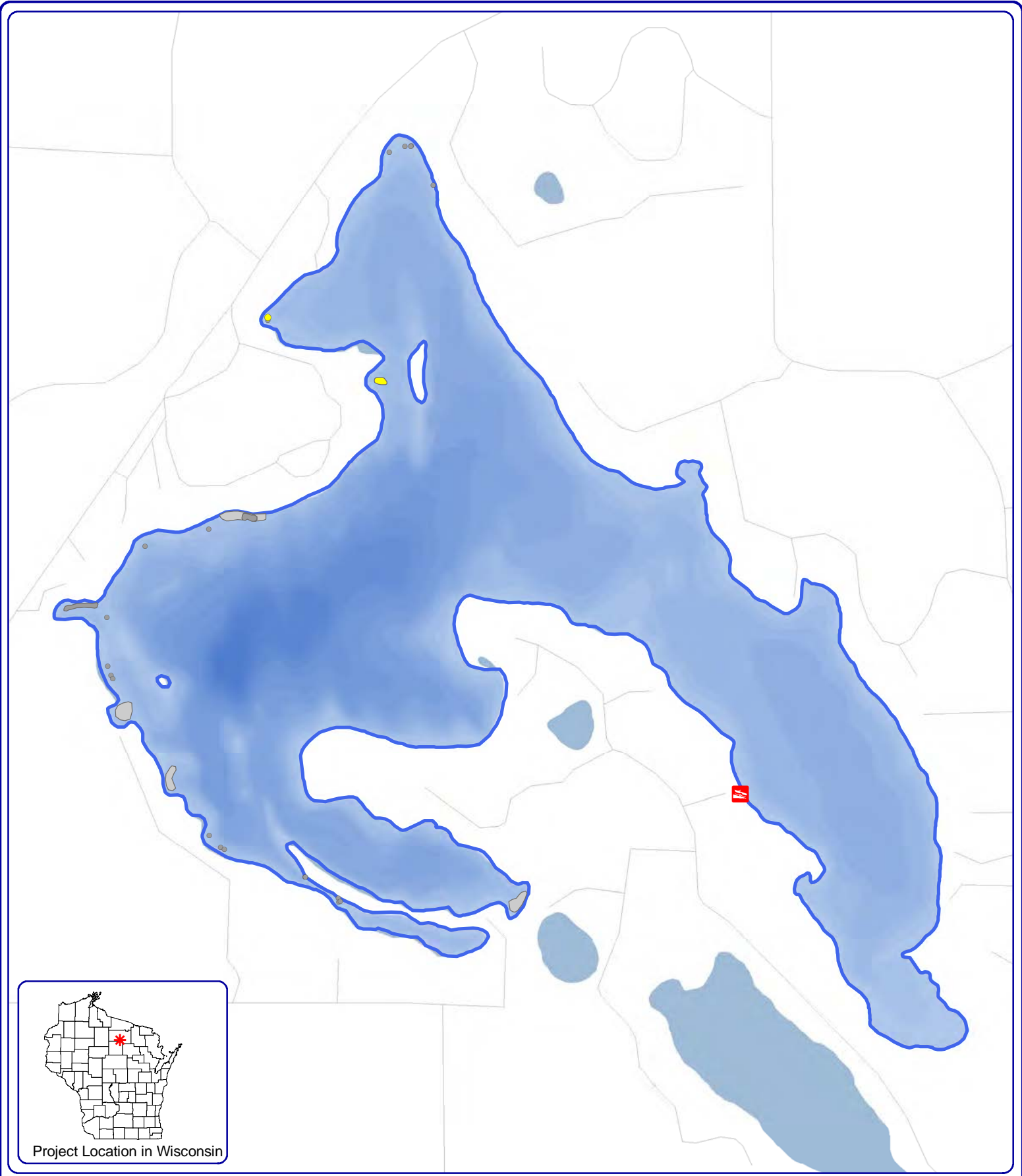


**Onterra LLC**  
 Lake Management Planning  
 815 Prosper Road  
 De Pere, WI 54115  
 920.338.8860  
 www.onterra-eco.com

**Sources:**  
 Roads and Hydro: WDNR  
 Bathymetry: WDNR 1975; digitized by Onterra  
 Aquatic Plants: Onterra, 2009  
**Map Date:** August 21, 2013  
 Filename: Map9\_Squash\_EWM\_Sep09.mxd

- Legend**
- |                            |                            |
|----------------------------|----------------------------|
| <b>Large EWM Community</b> | <b>Small EWM Community</b> |
| Highly Scattered           | Single or Few              |
| Scattered                  | Clumps of Plants           |
| Dominant                   | Small Plant Colony         |
| Highly Dominant            |                            |
| Surface Matting            |                            |

Map 9  
 Squash Lake  
 Oneida County, Wisconsin  
**2009 Eurasian  
 Watermilfoil Locations**

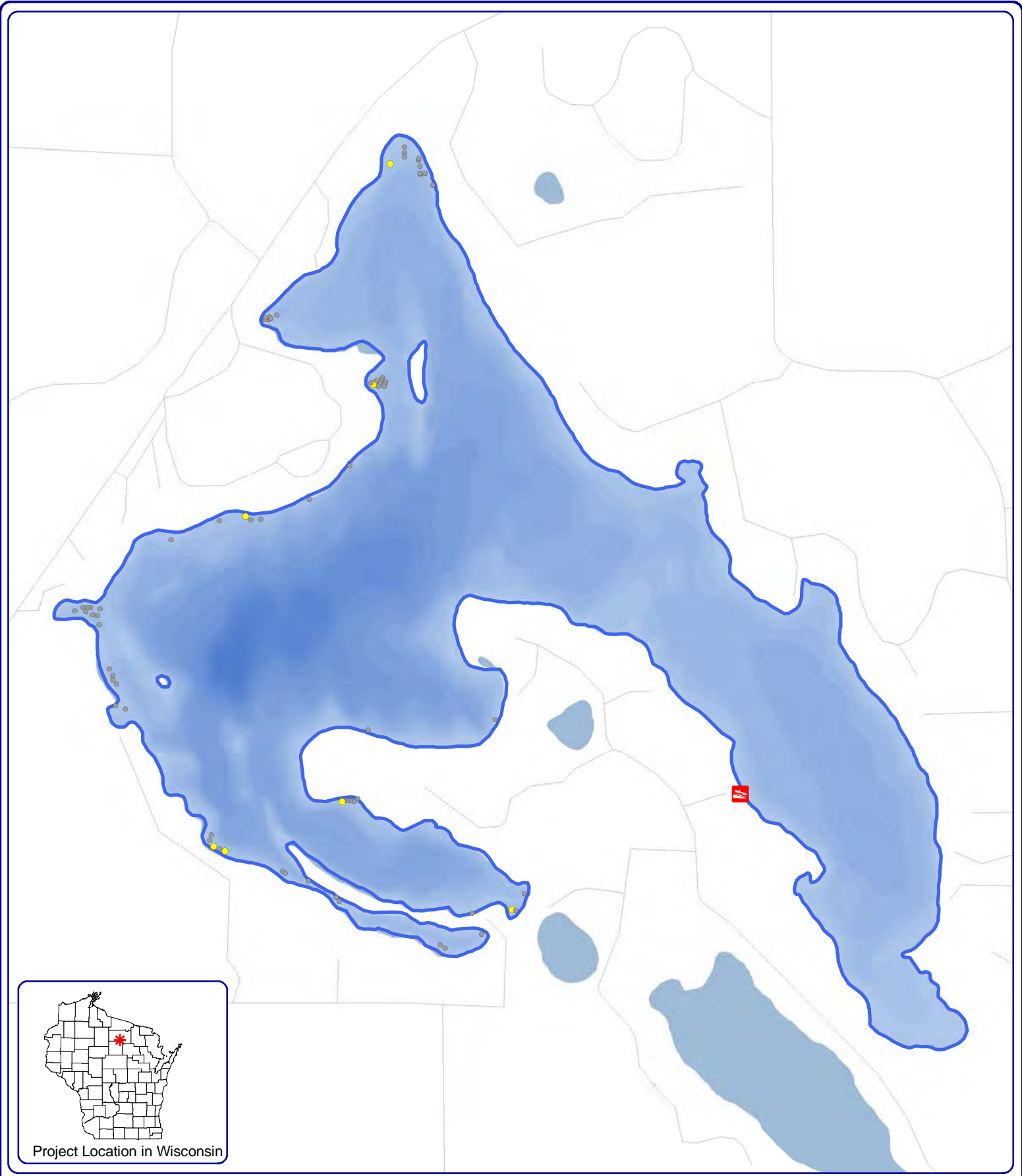


**Onterra LLC**  
 Lake Management Planning  
 815 Prosper Road  
 De Pere, WI 54115  
 920.338.8860  
 www.onterra-eco.com

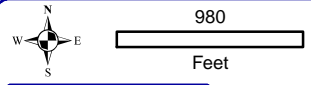
Sources:  
 Roads and Hydro: WDNR  
 Bathymetry: WDNR 1975; digitized by Onterra  
 Aquatic Plants: Onterra, 2010  
 Map Date: August 21, 2013  
 Filename: Map10\_Squash\_EWM\_Sept10.mxd

- Legend**
- |                            |                            |
|----------------------------|----------------------------|
| <b>Large EWM Community</b> | <b>Small EWM Community</b> |
| Highly Scattered           | Single or Few              |
| Scattered                  | Clumps of Plants           |
| Dominant                   | Small Plant Colony         |
| Highly Dominant            |                            |
| Surface Matting            |                            |

Map 10  
 Squash Lake  
 Oneida County, Wisconsin  
**2010 Eurasian  
 Watermilfoil Locations**



Project Location in Wisconsin



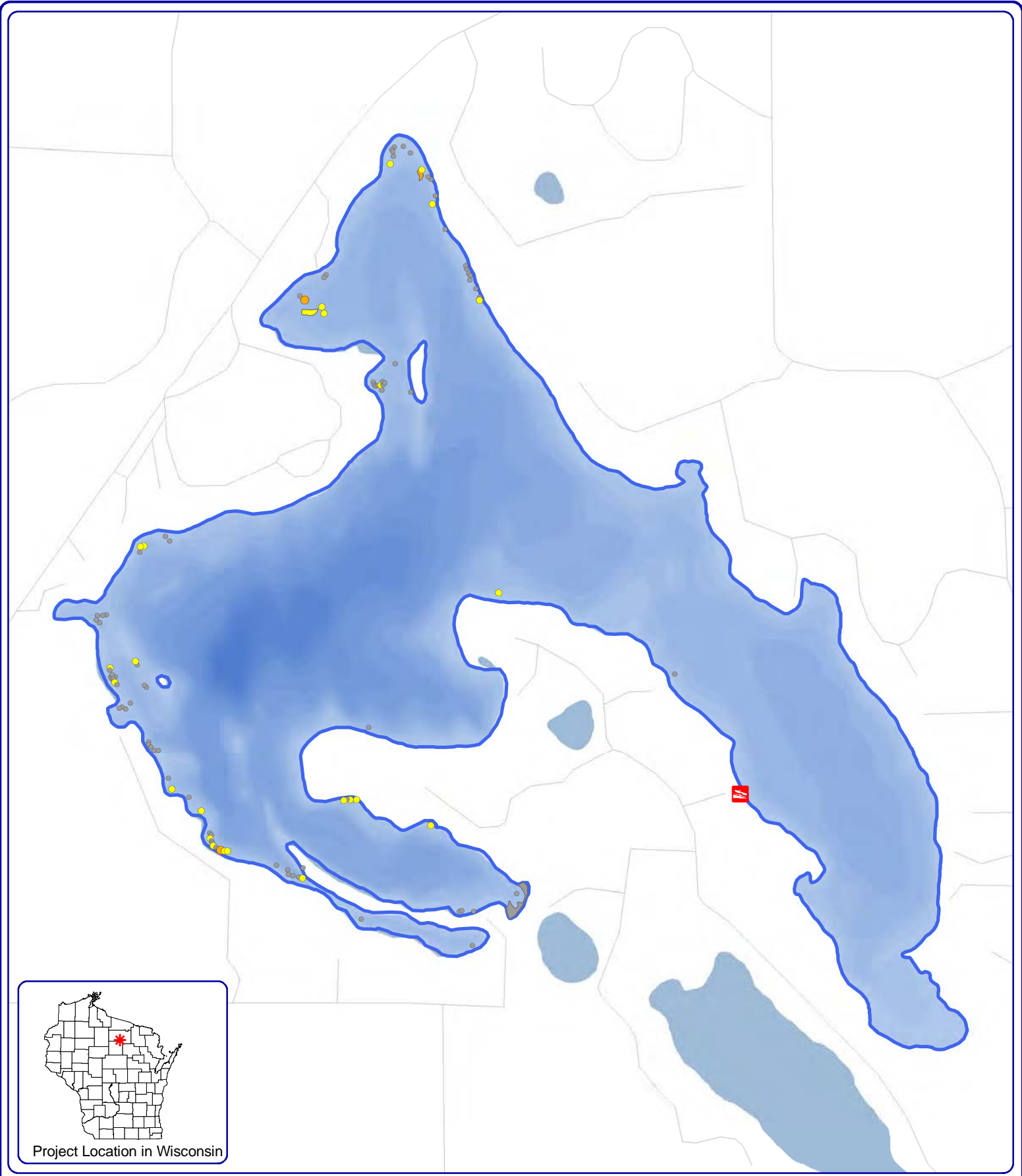
**Onterra LLC**  
 Lake Management Planning  
 815 Prosper Road  
 De Pere, WI 54115  
 920.338.8860  
 www.onterra-eco.com

Sources:  
 Roads and Hydro: WDNR  
 Bathymetry: WDNR 1975; digitized by Onterra  
 Aquatic Plants: Onterra, 2011  
 Map Date: August 21, 2013  
 Filename: Map11\_Squash\_EWM\_Sept11.mxd

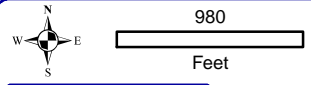
**Legend**

- |                            |                            |
|----------------------------|----------------------------|
| <b>Large EWM Community</b> | <b>Small EWM Community</b> |
| ● Highly Scattered         | ● Single or Few            |
| ● Scattered                | ● Clumps of Plants         |
| ● Dominant                 | ● Small Plant Colony       |
| ● Highly Dominant          |                            |
| ● Surface Matting          |                            |

Map 11  
 Squash Lake  
 Oneida County, Wisconsin  
**2011 Eurasian  
 Watermilfoil Locations**



Project Location in Wisconsin



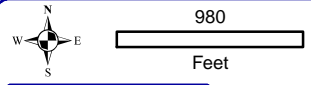
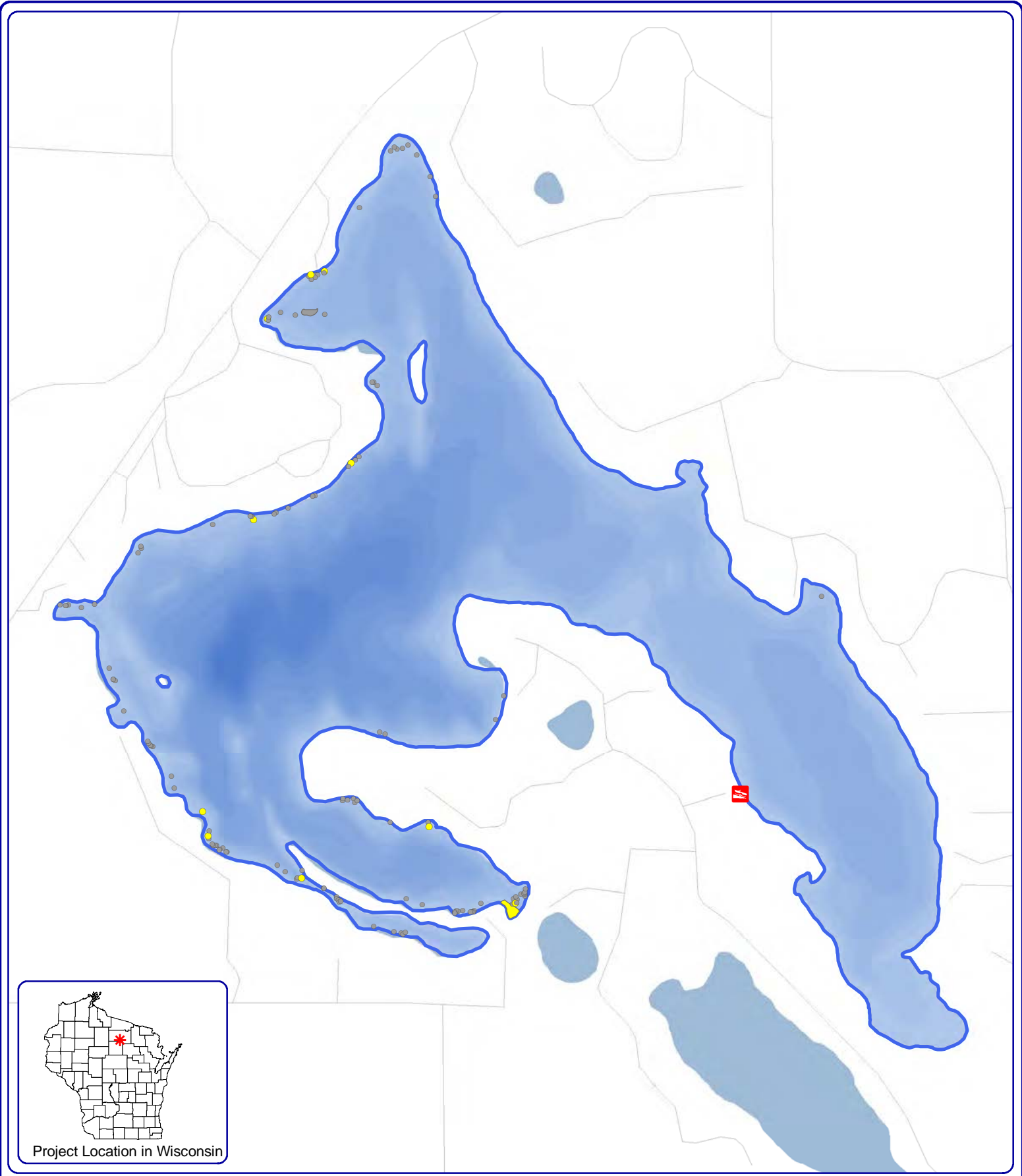
**Onterra LLC**  
 Lake Management Planning  
 815 Prosper Road  
 De Pere, WI 54115  
 920.338.8860  
 www.onterra-eco.com

**Sources:**  
 Roads and Hydro: WDNR  
 Bathymetry: WDNR 1975; digitized by Onterra  
 Aquatic Plants: Onterra, 2012  
**Map Date:** August 21, 2013  
 Filename: Map12\_Squash\_EWM\_June12.mxd

**Legend**

- |                            |                            |
|----------------------------|----------------------------|
| <b>Large EWM Community</b> | <b>Small EWM Community</b> |
| ● Highly Scattered         | ● Single or Few            |
| ● Scattered                | ● Clumps of Plants         |
| ● Dominant                 | ● Small Plant Colony       |
| ● Highly Dominant          |                            |
| ● Surface Matting          |                            |

Map 12  
 Squash Lake  
 Oneida County, Wisconsin  
**June 2012 Eurasian  
 Watermilfoil Locations**



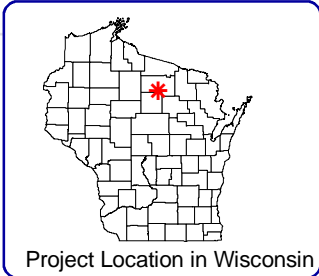
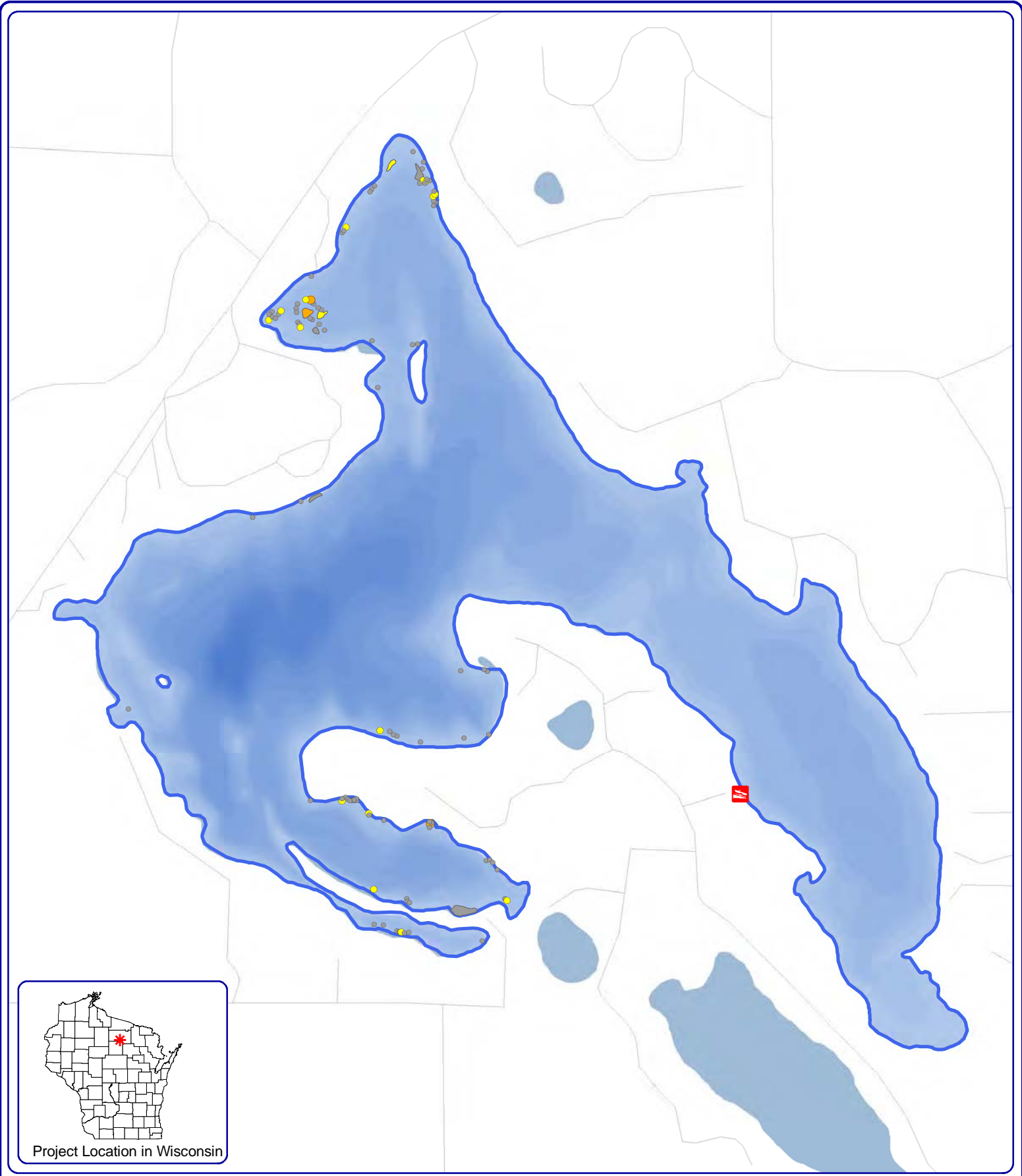
**Onterra LLC**  
 Lake Management Planning  
 815 Prosper Road  
 De Pere, WI 54115  
 920.338.8860  
 www.onterra-eco.com

Sources:  
 Roads and Hydro: WDNR  
 Bathymetry: WDNR 1975; digitized by Onterra  
 Aquatic Plants: Onterra, 2012  
 Map Date: August 21, 2013  
 Filename: Map13\_Squash\_EWM\_Sept12.mxd

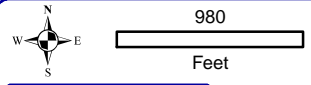
**Legend**

- |                            |                            |
|----------------------------|----------------------------|
| <b>Large EWM Community</b> | <b>Small EWM Community</b> |
| ● Highly Scattered         | ● Single or Few            |
| ● Scattered                | ● Clumps of Plants         |
| ● Dominant                 | ● Small Plant Colony       |
| ● Highly Dominant          |                            |
| ● Surface Matting          |                            |

Map 13  
 Squash Lake  
 Oneida County, Wisconsin  
**Sept. 2012 Eurasian  
 Watermilfoil Locations**



Project Location in Wisconsin



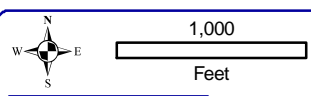
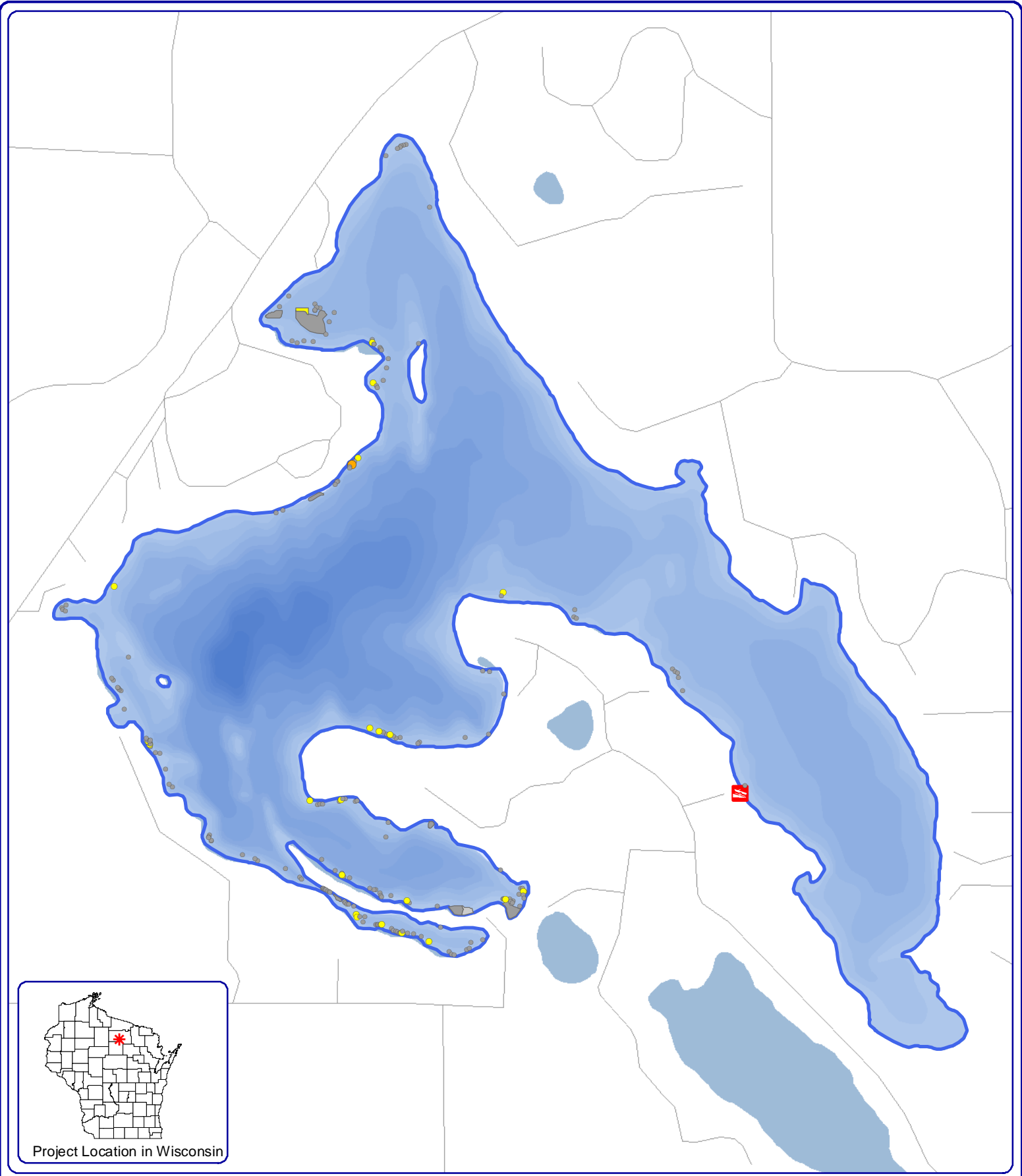
**Onterra LLC**  
 Lake Management Planning  
 815 Prosper Road  
 De Pere, WI 54115  
 920.338.8860  
 www.onterra-eco.com

Sources:  
 Roads and Hydro: WDNR  
 Bathymetry: WDNR 1975; digitized by Onterra  
 Aquatic Plants: Onterra, 2013  
 Map Date: August 21, 2013  
 Filename: Map14\_Squash\_EWM\_July13.mxd

**Legend**

- |                            |                            |
|----------------------------|----------------------------|
| <b>Large EWM Community</b> | <b>Small EWM Community</b> |
| Highly Scattered           | Single or Few              |
| Scattered                  | Clumps of Plants           |
| Dominant                   | Small Plant Colony         |
| Highly Dominant            |                            |
| Surface Matting            |                            |

Map 14  
 Squash Lake  
 Oneida County, Wisconsin  
**July 2013 Eurasian  
 Watermilfoil Locations**



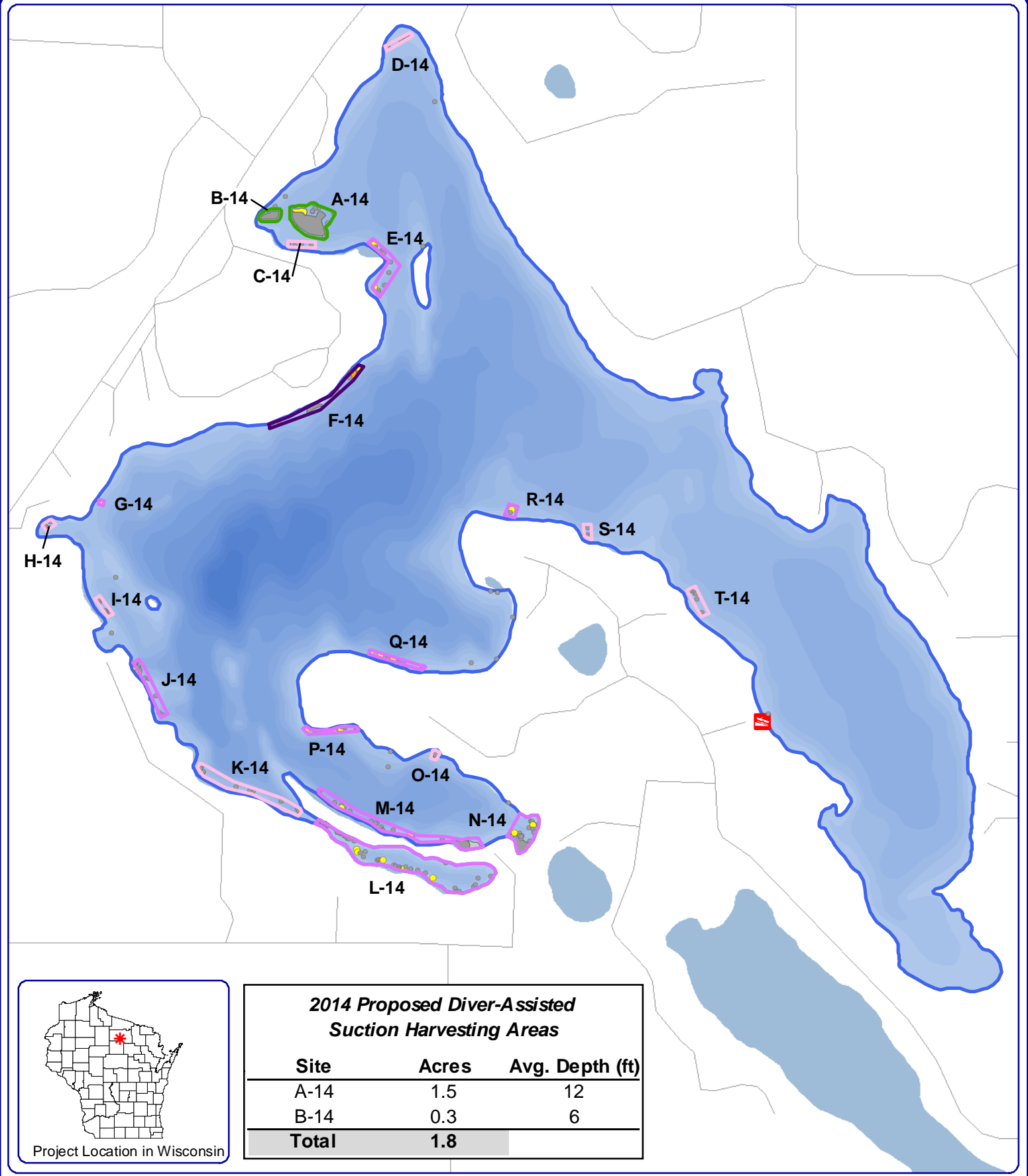
**Onterra LLC**  
 Lake Management Planning  
 815 Prosper Road  
 De Pere, WI 54115  
 920.338.8860  
 www.onterra-eco.com

Sources:  
 Roads and Hydro: WDNR  
 Bathymetry: WDNR 1975; digitized by Onterra  
 Aquatic Plants: Onterra, 2013  
 Map Date: October 11, 2013  
 Filename: Map15\_Squash\_EWM\_Sept13.mxd

**Legend**

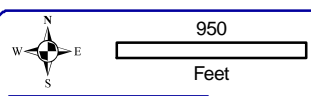
- |  |  |
|--|--|
| <b>Large EWM Community</b>   | <b>Small EWM Community</b>   |
| <ul style="list-style-type: none"> <li> Highly Scattered</li> <li> Scattered</li> <li> Dominant</li> <li> Highly Dominant</li> <li> Surface Matting</li> </ul> | <ul style="list-style-type: none"> <li> Single or Few</li> <li> Clumps of Plants</li> <li> Small Plant Colony</li> </ul> |

Map 15  
 Squash Lake  
 Oneida County, Wisconsin  
**September 2013 Eurasian  
 Watermilfoil Locations**



**2014 Proposed Diver-Assisted Suction Harvesting Areas**

Site	Acres	Avg. Depth (ft)
A-14	1.5	12
B-14	0.3	6
<b>Total</b>	<b>1.8</b>	



**Onterra LLC**  
 Lake Management Planning  
 815 Prosper Road  
 De Pere, WI 54115  
 920.338.8860  
 www.onterra-eco.com

Sources:  
 Roads and Hydro: WDNR  
 Bathymetry: WDNR 1975; digitized by Onterra  
 Aquatic Plants: Onterra, 2013  
 Map Date: October 11, 2013  
 Filename: Map15\_Squash\_EWM\_Sep13.mxd

- Legend**
- |                            |                            |   |
|----------------------------|----------------------------|---|
| <b>Large EWM Community</b> | <b>Small EWM Community</b> | <b>Diver-Assisted Suction Harvest Area</b>    |
| Highly Scattered           | Single or Few              | SLA Diver Hand-Removal Area - Primary Focus   |
| Scattered                  | Clumps of Plants           | SLA Diver Hand-Removal Area - Secondary Focus |
| Dominant                   | Small Plant Colony         | SLA Diver Hand-Removal Area - Tertiary Focus  |
| Highly Dominant            |                            |   |
| Surface Matting            |                            |   |

**Map 16**  
**Squash Lake**  
 Oneida County, Wisconsin  
**2014 Proposed**  
**Hand-removal Areas**