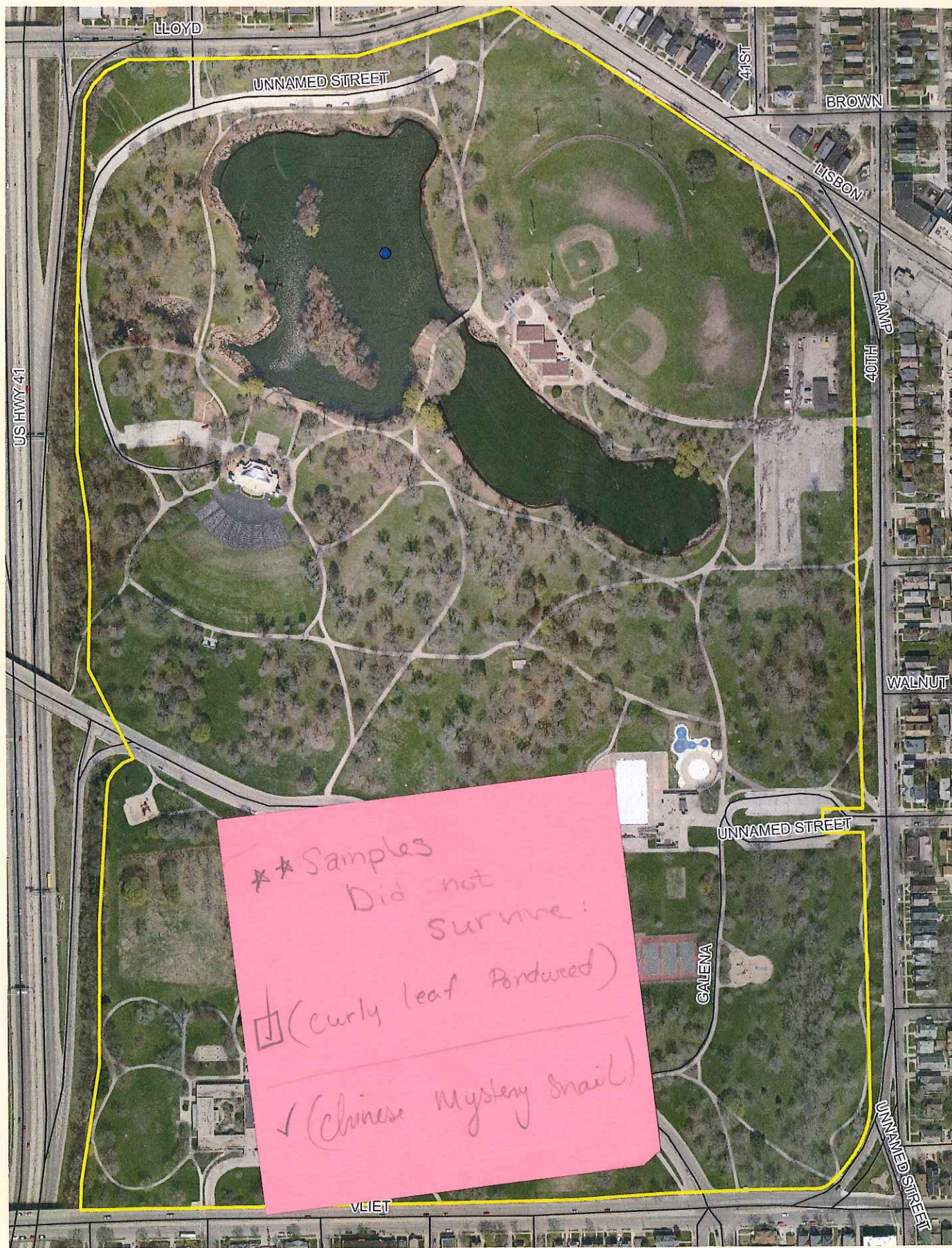


# Washington Park



\*\* Samples  
 Did not  
 survive:  
 □ (curly leaf Pondweed)  
 ✓ (Chinese Mystery snail)

SOUTH: 4 rings  
 28 clear / 84 med / 140 Poor

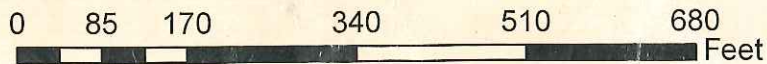
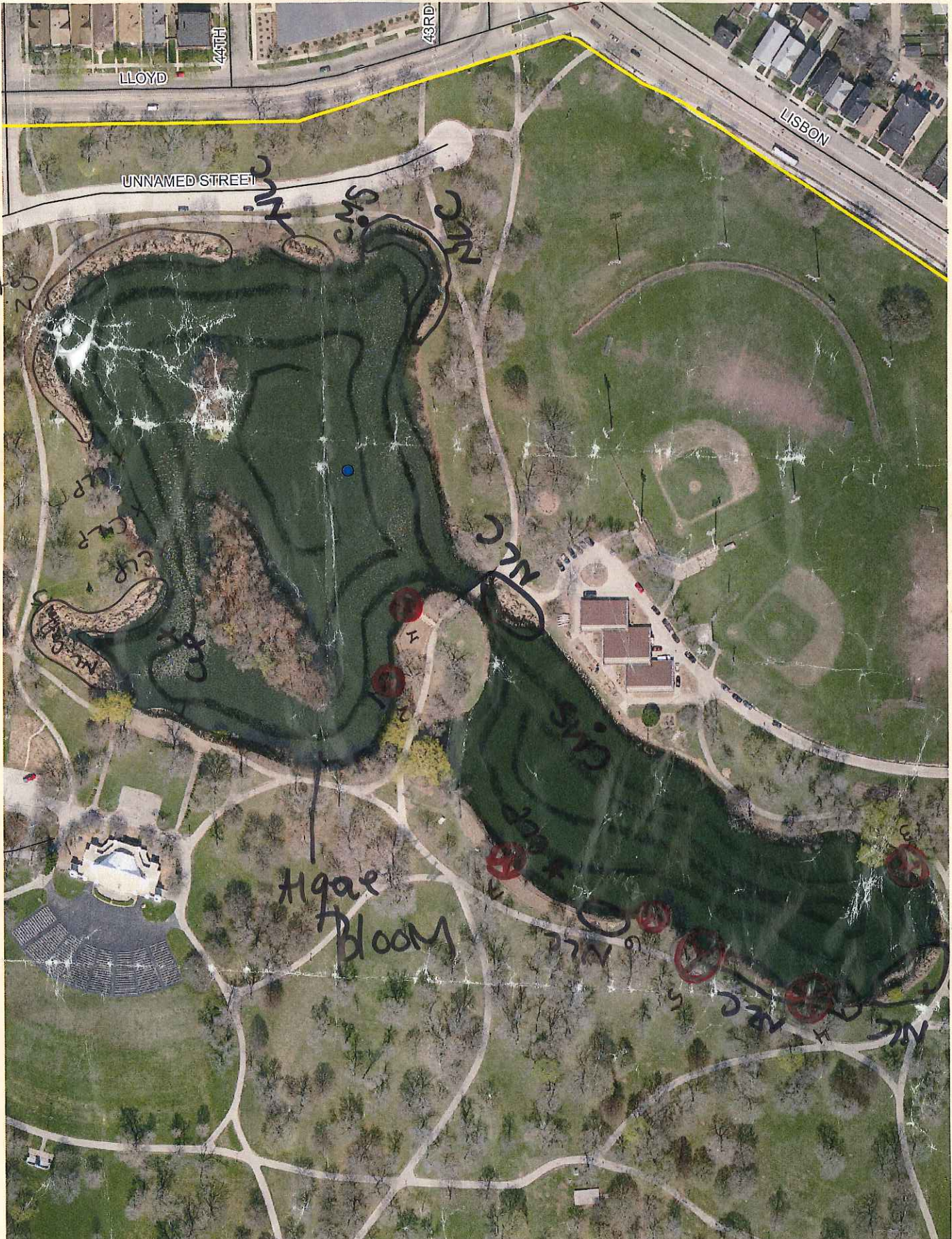
0 150 300 600 900 1,200 Feet

NORTH: 6 rings

19 clear / 56 med / 93 Poor



# Washington Park Pond















Ring	Density	Ring	Density	Ring	Density	Ring	Density	Ring	Density	Ring	Density	Ring	Density	Total # of rings	Mean density

**Crayfish Monitoring**

Date traps initially set \_\_\_\_\_  
 For each date the trap is checked write the number of Rusty Cray Fish (RC)  
 and the number of Red Swamp Crayfish (RSC) found in each trap

Total RC
Total RSC

Dates checked	RC	RSC	RC	RSC	RC	RSC	RC	RSC	RC	RSC	RC	RSC	RC	RSC
Trap 1														
Trap 2														
Trap 3														
Trap 4														
Trap 5														
Trap 6														
Trap 7														
Trap 8														
Trap 9														
Trap 10														

Data entered into SWIMS on \_\_\_\_\_  
 by \_\_\_\_\_

**Density Ratings**

- 1 - A few plants or invertebrates
- 2 - One or a few plant beds or colonies of invertebrates
- 3 - Many small beds or scattered plants or colonies of invertebrates
- 4 - Dense plant, snail or mussel growth in a whole bay or portion of the lake
- 5 - Dense plant, snail or mussel growth covering most shallow areas

Comments
<p>WILDLIFE          Mallard (3, Deas 9)          Bullhead (Swimable)          Grebe          RW Blackbird          Brook Trout (Dead)          Turtle (poised)          Barn Swallows          Wood Duck</p>
<p>PLANTS          N/L Cattail (or hybrid)          Green Teal          Black willow          Smartweed          Green smartweed          Norway maple          Sage pondweed          Duckweed          Mulberry (Dead)          Brook (Dead)</p>